

TRAFFIC FLOW MAP 2022

OREGON STATE HIGHWAY SYSTEM

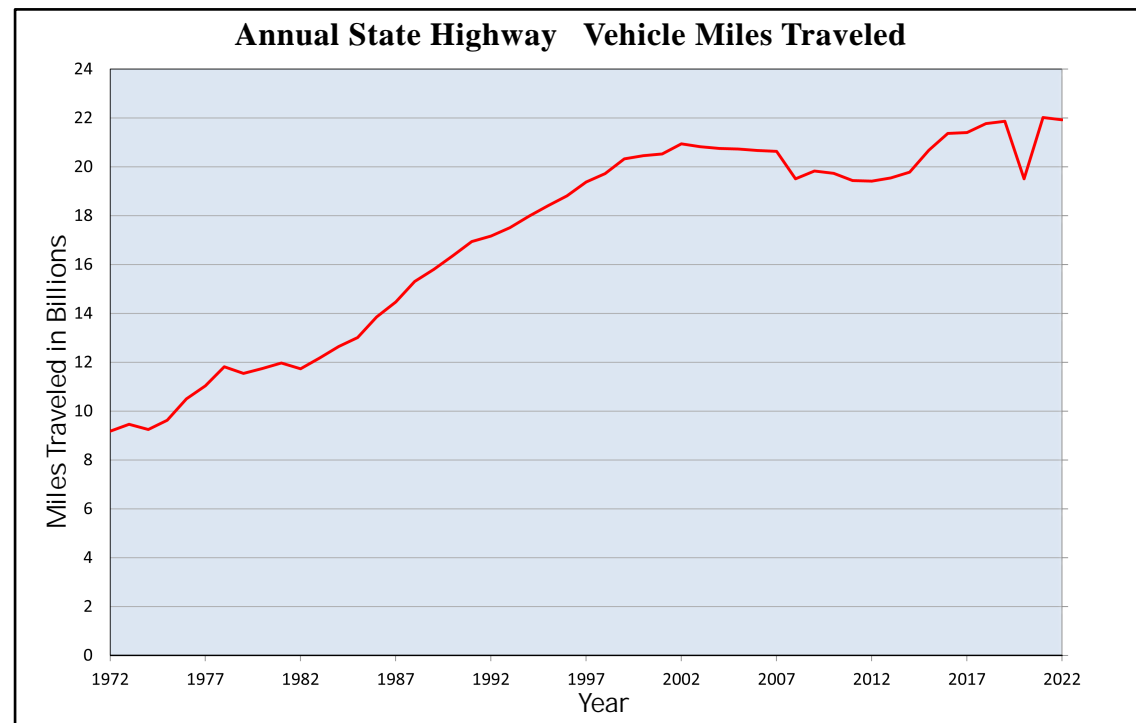
VOLUMES SHOWN ARE ALL VEHICLE ANNUAL AVERAGE DAILY TRAFFIC

- 6900 AADT Volume
- Automatic Traffic Recorder Station
- 24-016 Station Number

Traffic Flow Segments

- AADT
- 0 - 1000
- 1001 - 2500
- 2501 - 5000
- 5001 - 10000
- 10001 - 15000
- 15001 - 20000
- 20001 - 30000
- 30001 - 50000
- 50001 - 75000
- 75001 +

- Interstate - US Route - OR Route
- 84
- 20
- 34

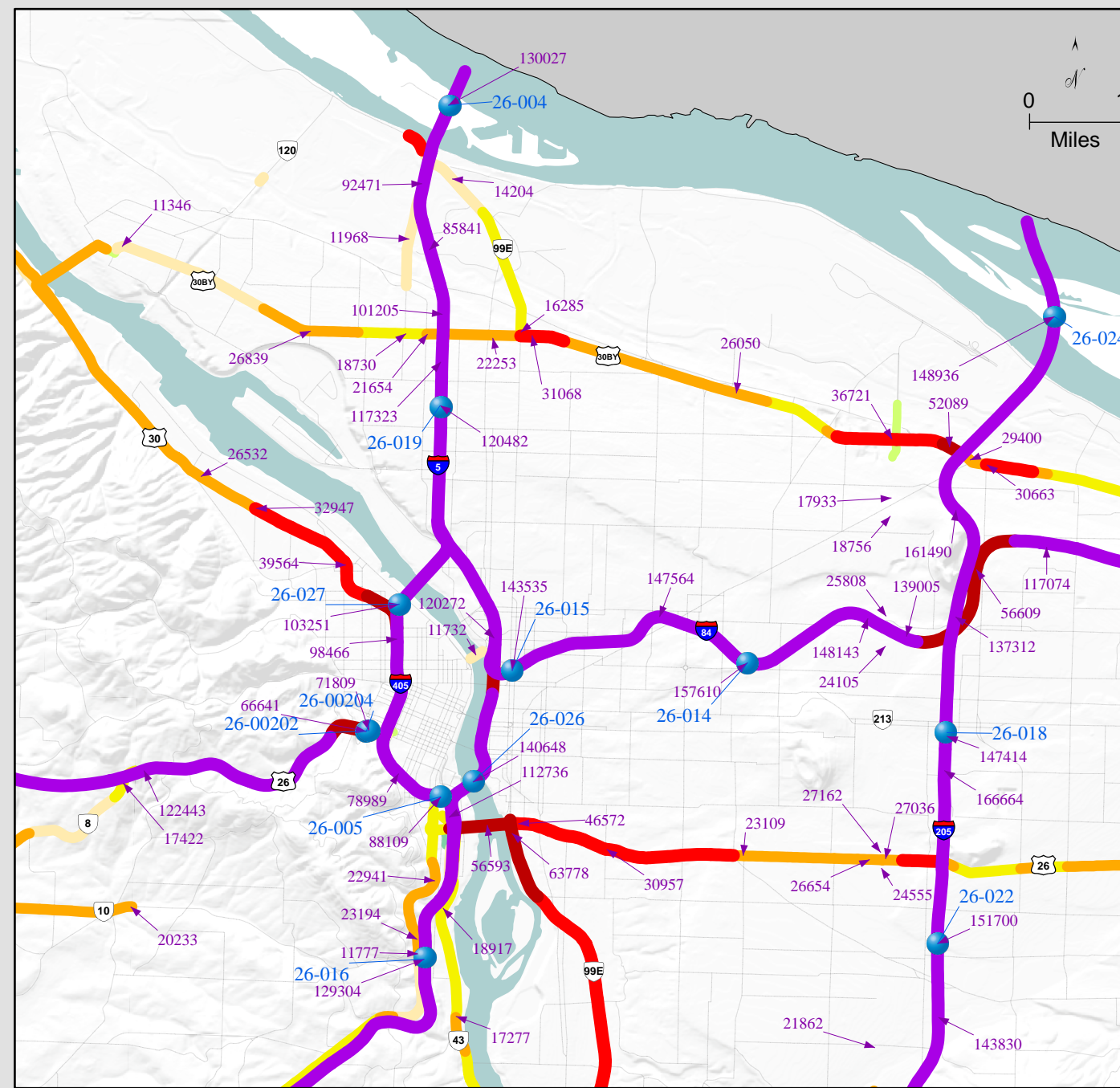


2022 MILEAGE AND VMT SUMMARY
 State Highways 7,591 (9.6%) road miles = 21.9 (59.9%) Billion AVMT
 Other Roads (County, City, Tribal, Etc.) 71,556 (90.4%) road miles = 14.7 (40.1%) Billion AVMT
 Oregon Total 79,147 road miles = 36.6 Billion AVMT

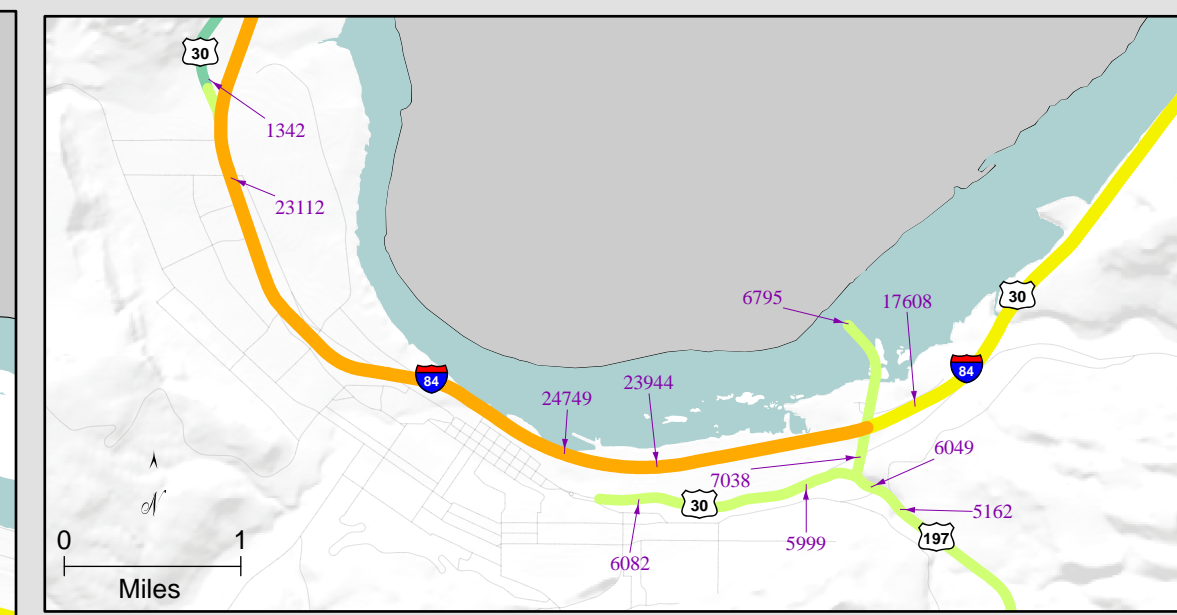
DISCLAIMER: This product is for informational purposes only and may not have been prepared for or be suitable for legal, engineering or surveying purposes. Users of this information should review or consult the primary data and information sources to assess the quality of the information.



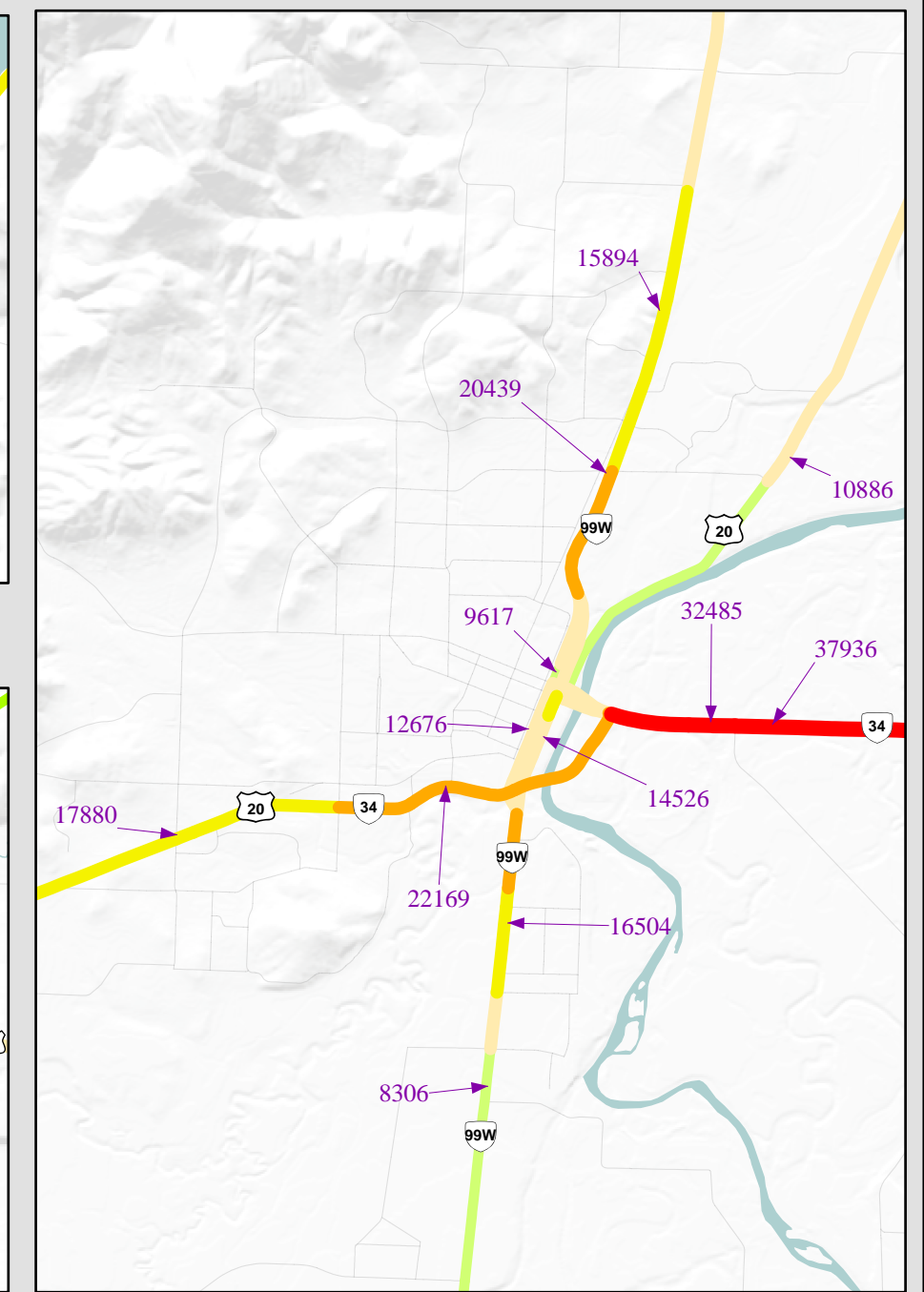
PORTLAND



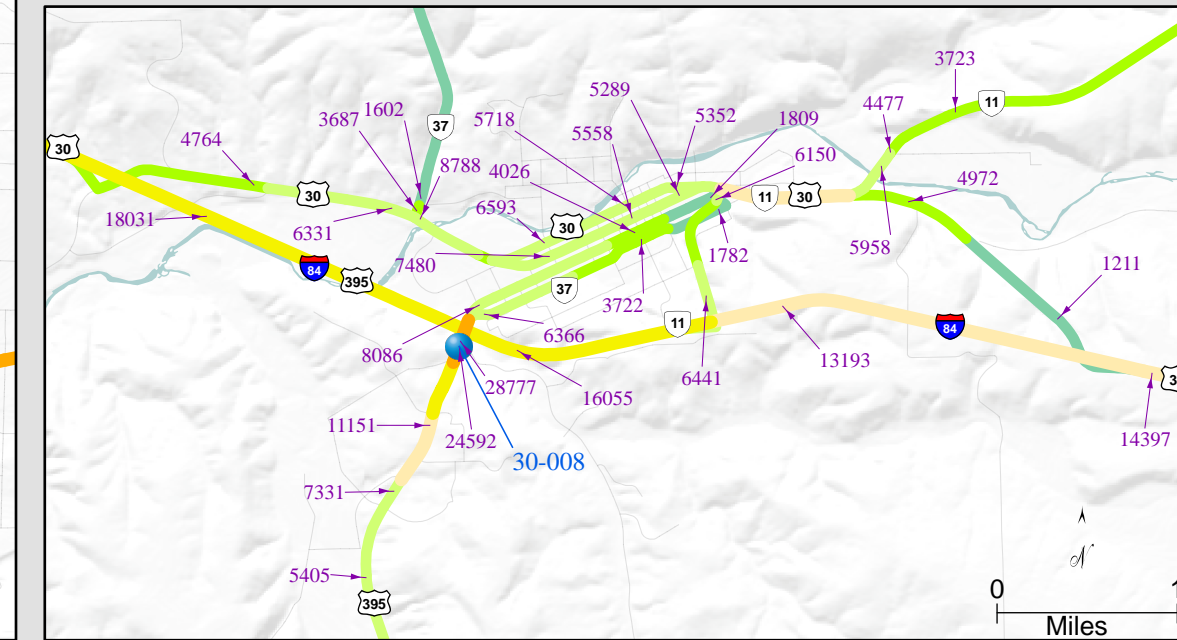
THE DALLES



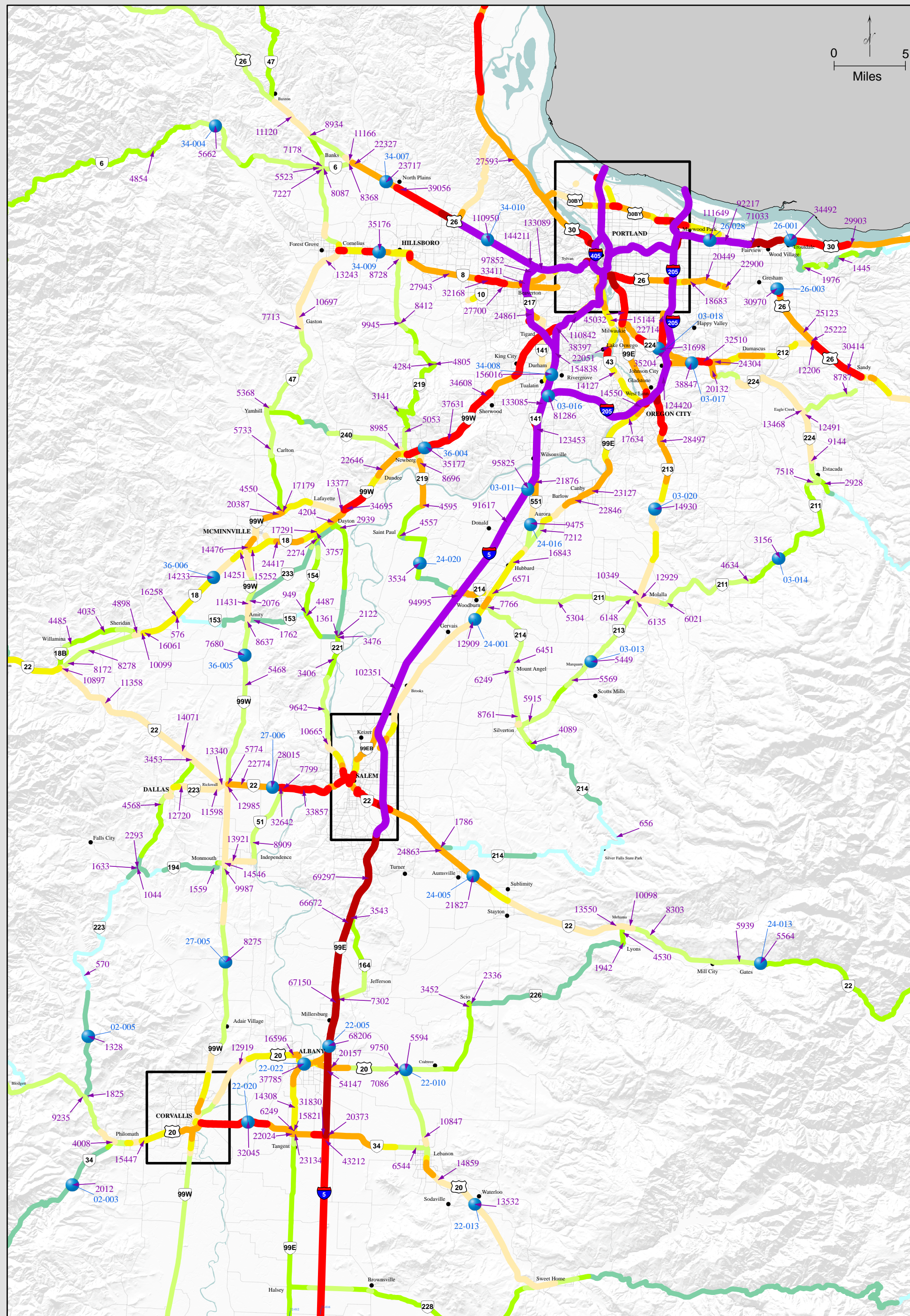
CORVALLIS



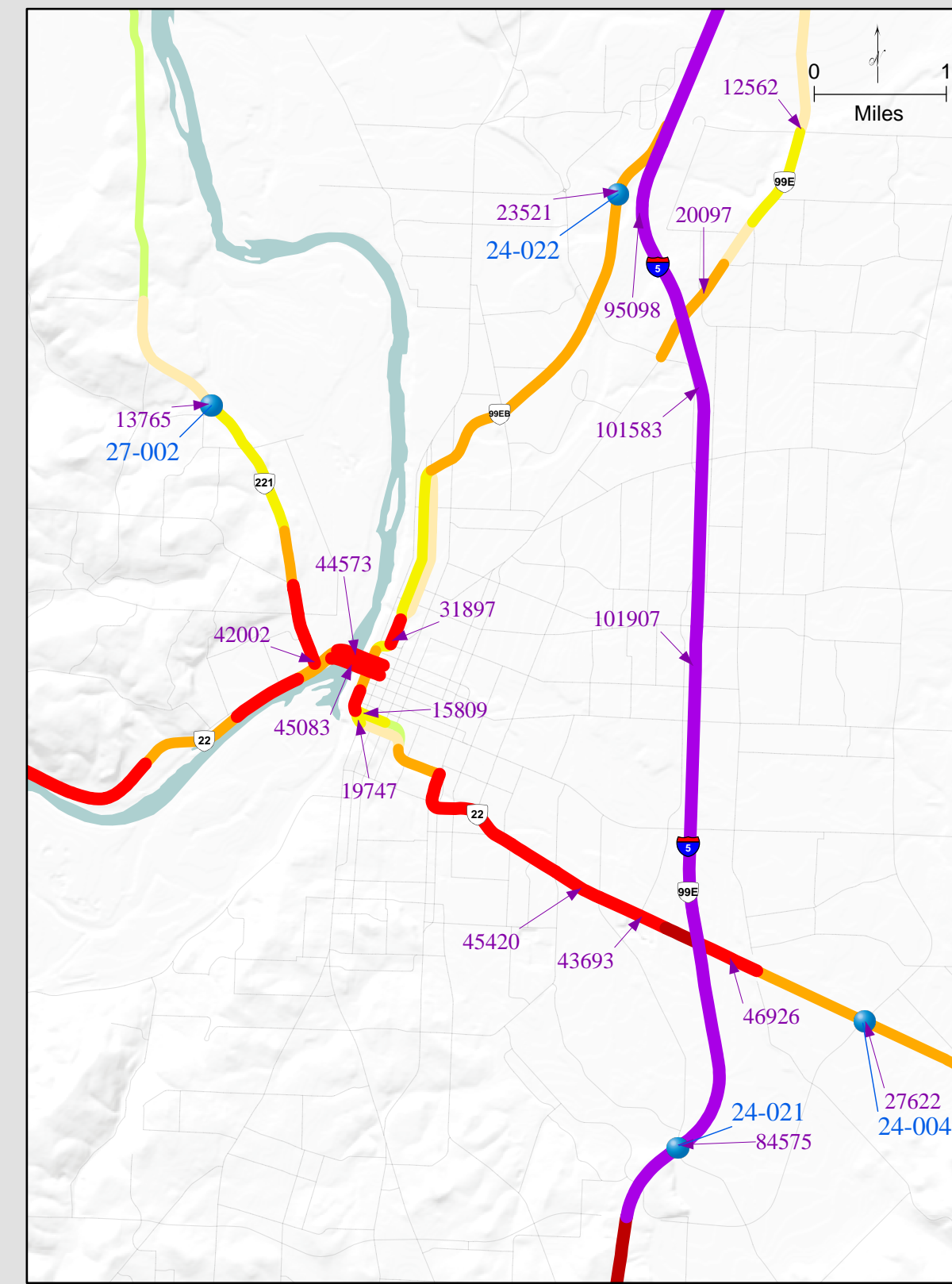
PENDLETON



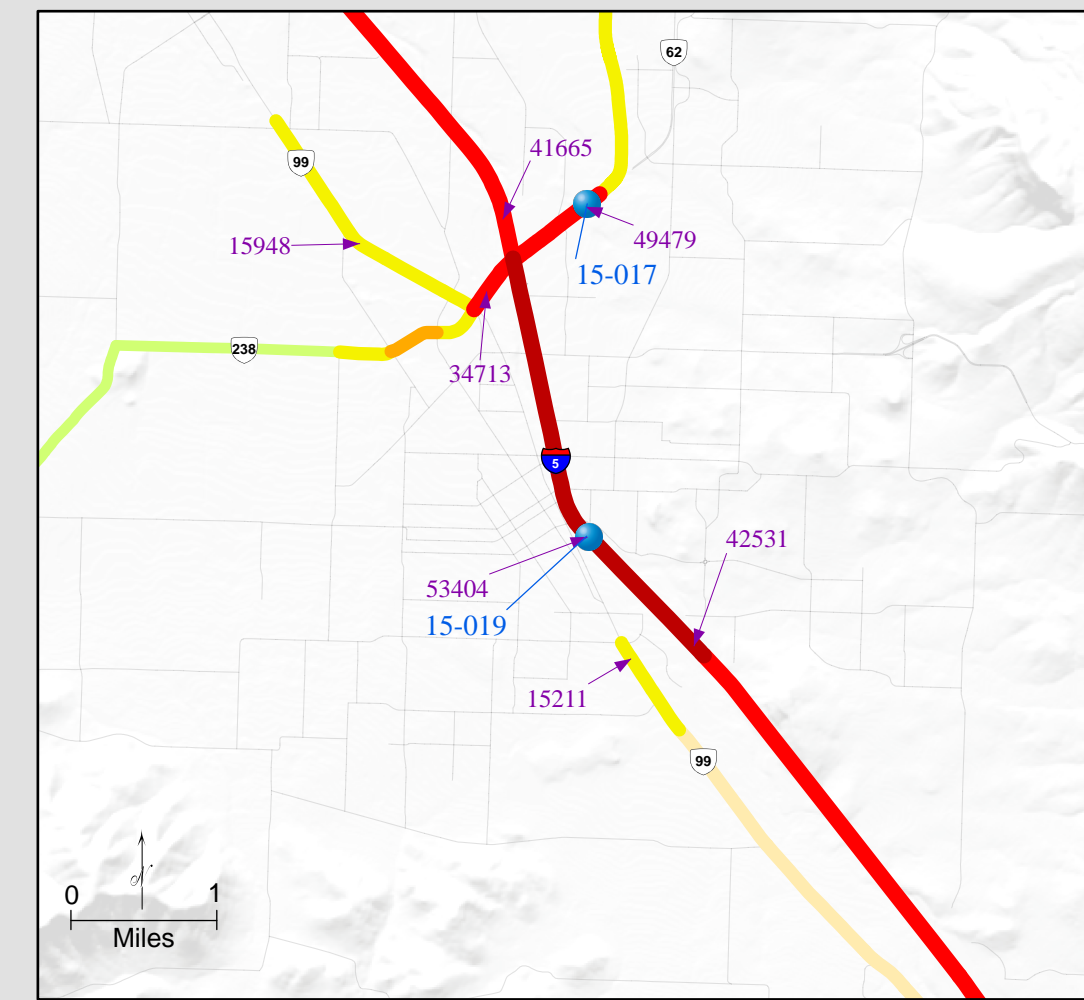
WILLAMETTE VALLEY



SALEM



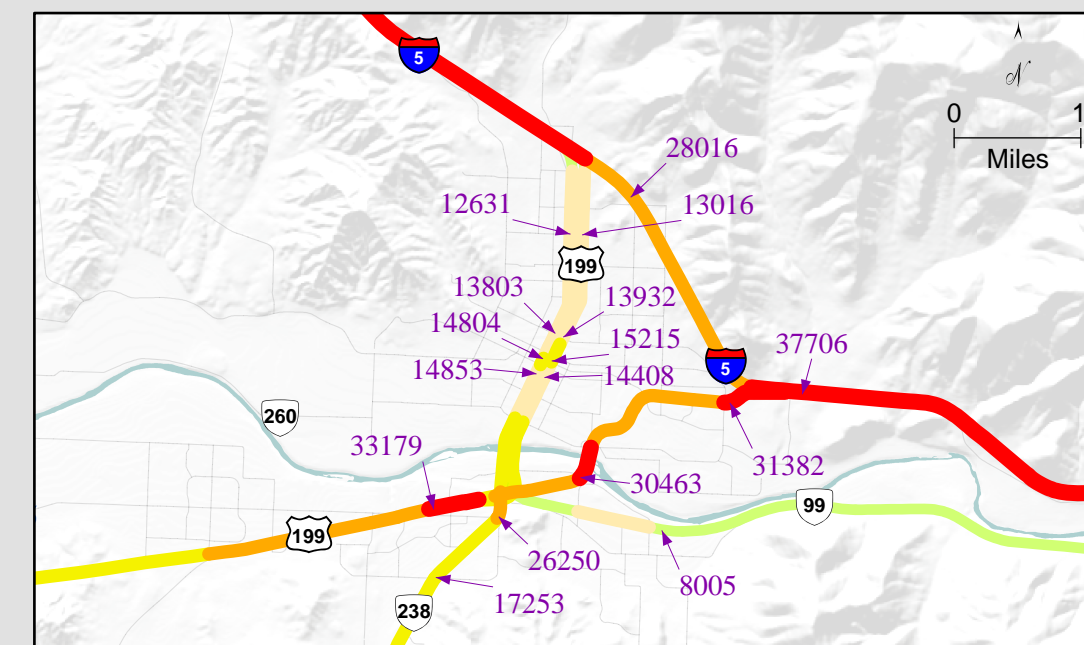
MEDFORD



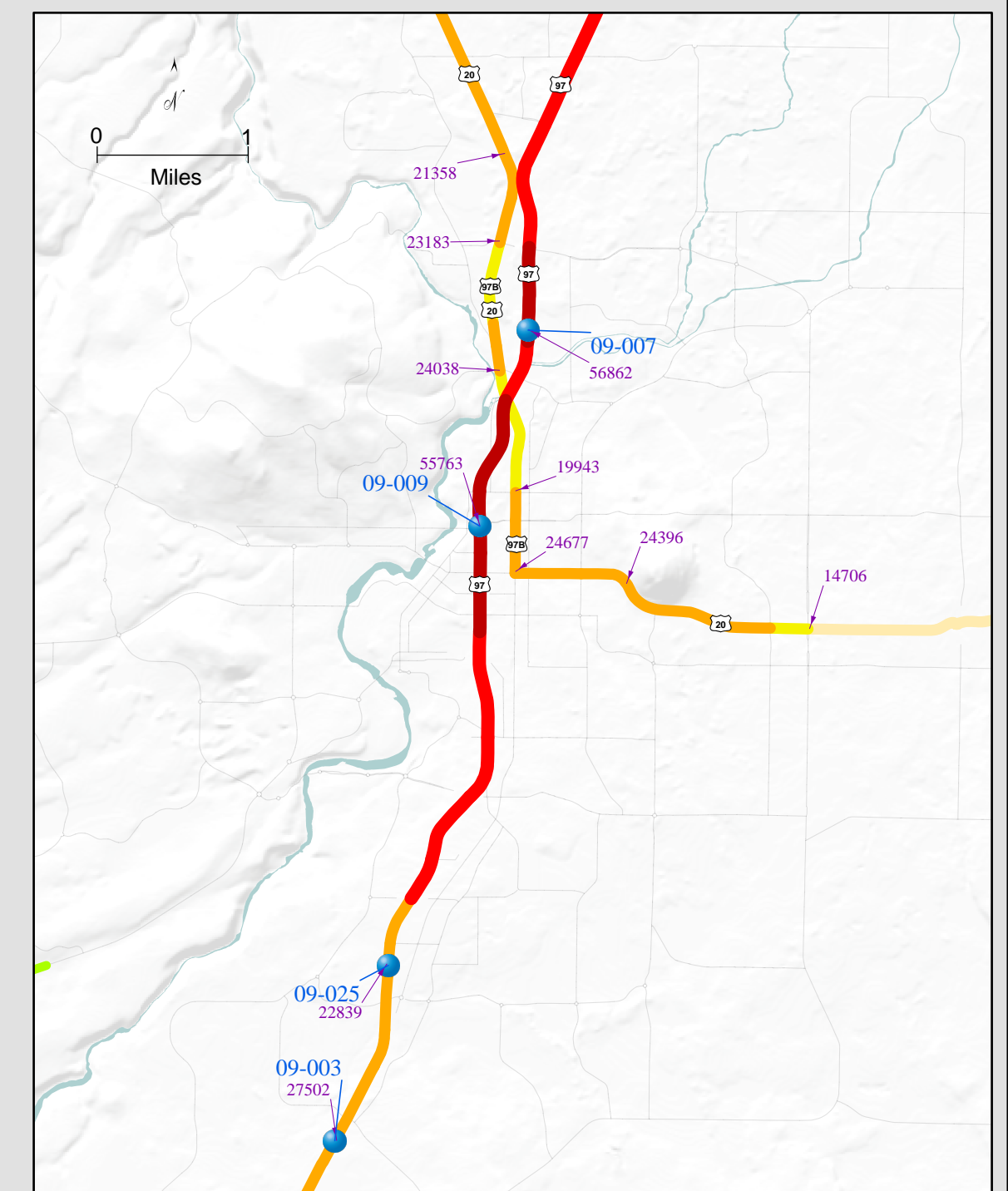
KLAMATH FALLS



GRANTS PASS



BEND



EUGENE

