

**Monthly Forecast Variance Report**  
April 2025

Monthly Forecast Variance Reports show the difference between the forecasted revenues and the actual revenues for highway fees. The Total Highway Fees include: Motor Fuels, Commerce and Compliance Fees, Driver and Motor Vehicle Highway Fees, as well as Vehicle Use Tax and Other Highway Revenues.

**Summary**

<b>Total Highway Fees</b>				
Month	Actual *	October 2024		
		Current Forecast	Over/Under Forecast	%
Aug-24	\$155,095,712	\$165,653,312	-\$10,557,600	-6.4%
Sep-24	\$141,344,592	\$145,281,248	-\$3,936,656	-2.7%
Oct-24	\$147,205,936	\$152,694,912	-\$5,488,976	-3.6%
Nov-24	\$145,656,592	\$151,257,616	-\$5,601,024	-3.7%
Dec-24	\$151,414,032	\$152,794,768	-\$1,380,736	-0.9%
Jan-25	\$156,046,784	\$137,755,392	\$18,291,392	13.3%
Feb-25	\$132,575,504	\$134,418,432	-\$1,842,928	-1.4%
Mar-25	-	\$144,889,680	-	-
Apr-25	-	\$148,079,760	-	-
<b>Cumulative Over/Under Forecast</b>			<b>-\$10,516,528</b>	<b>-1.0%</b>

<b>Total Motor Fuels Fees</b>				
Month	Actual	October 2024		
		Forecast	Over/Under Forecast	%
Aug-24	\$63,436,316	\$64,712,324	-\$1,276,008	-2.0%
Sep-24	\$59,843,243	\$60,290,288	-\$447,045	-0.7%
Oct-24	\$51,984,320	\$60,320,016	-\$8,335,696	-13.8%
Nov-24	\$62,312,146	\$55,772,064	\$6,540,082	11.7%
Dec-24	\$54,261,739	\$54,556,044	-\$294,305	-0.5%
Jan-25	\$53,573,569	\$50,878,740	\$2,694,829	5.3%
Feb-25	\$47,386,208	\$49,259,404	-\$1,873,196	-3.8%
Mar-25	-	\$56,180,524	-	-
Apr-25	-	\$57,094,516	-	-
<b>Cumulative Over/Under Forecast</b>			<b>-\$2,991,338</b>	<b>-0.8%</b>

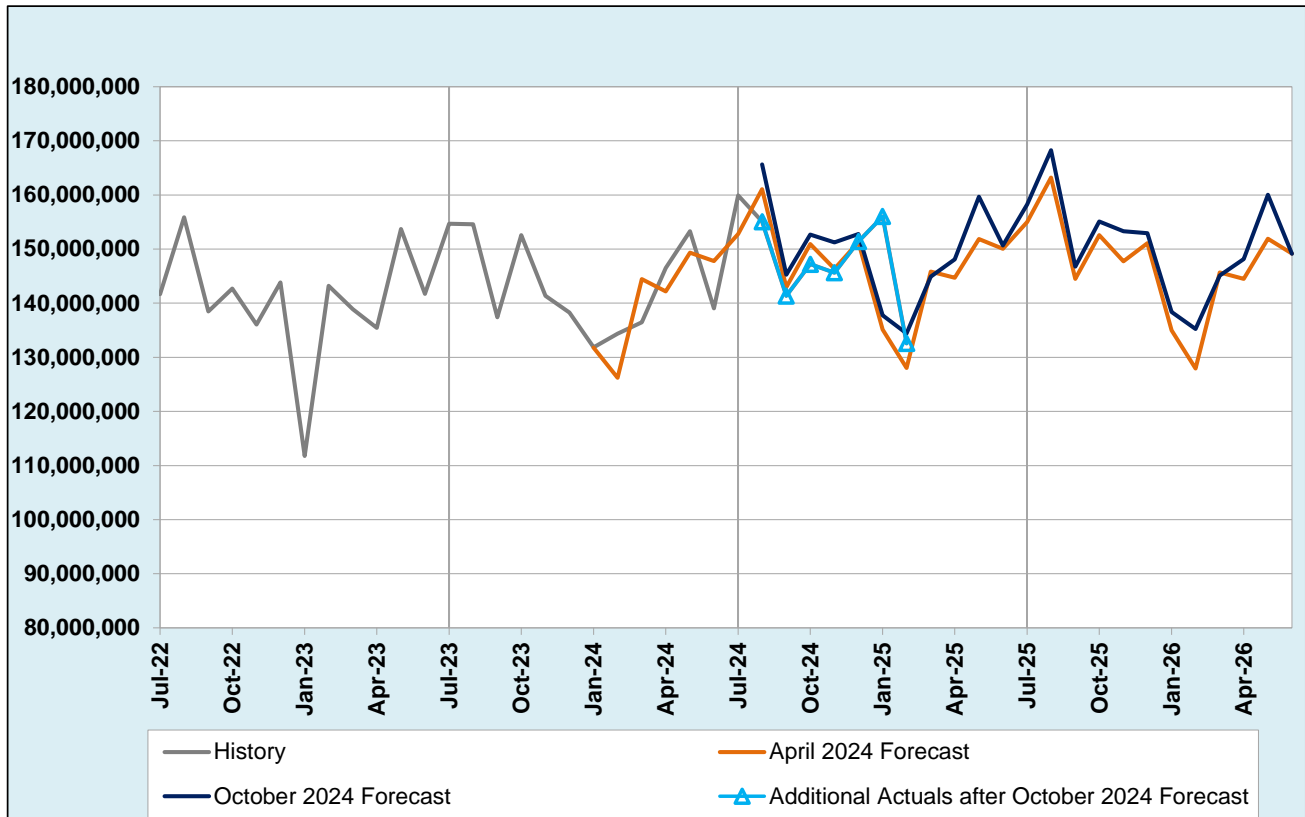
<b>Total Commerce and Compliance (CCD) Fees</b>				
Month	Actual	October 2024		
		Forecast	Over/Under Forecast	%
Aug-24	\$42,541,752	\$49,814,072	-\$7,272,320	-14.6%
Sep-24	\$36,962,620	\$39,421,616	-\$2,458,996	-6.2%
Oct-24	\$50,523,832	\$46,571,012	\$3,952,820	8.5%
Nov-24	\$44,943,168	\$53,612,784	-\$8,669,616	-16.2%
Dec-24	\$54,891,416	\$52,414,536	\$2,476,880	4.7%
Jan-25	\$51,976,924	\$43,264,028	\$8,712,896	20.1%
Feb-25	\$42,730,960	\$40,515,940	\$2,215,020	5.5%
Mar-25	\$35,307,456	\$38,509,132	-\$3,201,676	-8.3%
Apr-25	-	\$45,191,060	-	-
<b>Cumulative Over/Under Forecast</b>			<b>-\$4,244,992</b>	<b>-1.2%</b>

<b>Total Driver and Motor Vehicle (DMV) Highway Fees</b>				
Month	Actual	October 2024		
		Forecast	Over/Under Forecast	%
Aug-24	\$44,710,144	-	-	-
Sep-24	\$40,609,560	\$41,360,948	-\$751,388	-1.8%
Oct-24	\$41,269,800	\$42,375,712	-\$1,105,912	-2.6%
Nov-24	\$32,684,740	\$36,581,328	-\$3,896,588	-10.7%
Dec-24	\$37,184,932	\$40,748,232	-\$3,563,300	-8.7%
Jan-25	\$46,144,556	\$39,260,888	\$6,883,668	17.5%
Feb-25	\$35,940,788	\$38,285,408	-\$2,344,620	-6.1%
Mar-25	\$44,346,408	\$46,248,192	-\$1,901,784	-4.1%
Apr-25	-	\$42,166,224	-	-
<b>Cumulative Over/Under Forecast</b>			<b>-\$6,679,924</b>	<b>-2.4%</b>

\* Total highway actuals are not final because of lags in getting the actuals in certain program areas. In the cases when actuals are lagging the forecasted revenues are used instead, for that reason historic actuals will be adjusted each month as data matures.

## Total Highway Fees

Total Highway Fees include: Motor Fuels, Commerce and Compliance Fees, Driver and Motor Vehicle Highway Fees, as well as Vehicle Use Tax and Other Highway Revenues.



Month	Actual *	October 2024 Current	Over/Under Forecast (October 2024)		April 2024 Previous Forecast	Over/Under Forecast (April 2024)	
Jan-24	\$131,818,792	-	-	-	\$131,801,248	\$17,544	0.0%
Feb-24	\$134,359,216	-	-	-	\$126,218,048	\$8,141,168	6.5%
Mar-24	\$136,475,680	-	-	-	\$144,431,648	-\$7,955,968	-5.5%
Apr-24	\$146,500,608	-	-	-	\$142,164,032	\$4,336,576	3.1%
May-24	\$153,289,504	-	-	-	\$149,318,928	\$3,970,576	2.7%
Jun-24	\$139,030,768	-	-	-	\$147,795,536	-\$8,764,768	-5.9%
Jul-24	\$159,918,192	-	-	-	\$152,772,544	\$7,145,648	4.7%
Aug-24	<b>\$155,095,712</b>	\$165,653,312	-\$10,557,600	-6.4%	\$161,063,664	-\$5,967,952	-3.7%
Sep-24	<b>\$141,344,592</b>	\$145,281,248	-\$3,936,656	-2.7%	\$142,979,168	-\$1,634,576	-1.1%
Oct-24	<b>\$147,205,936</b>	\$152,694,912	-\$5,488,976	-3.6%	\$150,919,904	-\$3,713,968	-2.5%
Nov-24	<b>\$145,656,592</b>	\$151,257,616	-\$5,601,024	-3.7%	\$146,366,144	-\$709,552	-0.5%
Dec-24	<b>\$151,414,032</b>	\$152,794,768	-\$1,380,736	-0.9%	\$151,300,752	\$113,280	0.1%
Jan-25	<b>\$156,046,784</b>	\$137,755,392	\$18,291,392	13.3%	\$135,110,864	\$20,935,920	15.5%
Feb-25	<b>\$132,575,504</b>	\$134,418,432	-\$1,842,928	-1.4%	\$128,012,704	\$4,562,800	3.6%
Mar-25	-	\$144,889,680	-	-	\$145,859,920	-	-
Apr-25	-	\$148,079,760	-	-	\$144,694,448	-	-
<b>Cumulative Over/Under Forecast</b>			<b>-\$10,516,528</b>	<b>-1.0%</b>		<b>\$20,476,728</b>	<b>1.0%</b>

\* Total highway actuals are not final because of lags in getting the actuals in certain program areas. In the cases when actuals are lagging the forecasted revenues are used instead, for that reason historic actuals will be adjusted each month as data

## Total Highway Fees

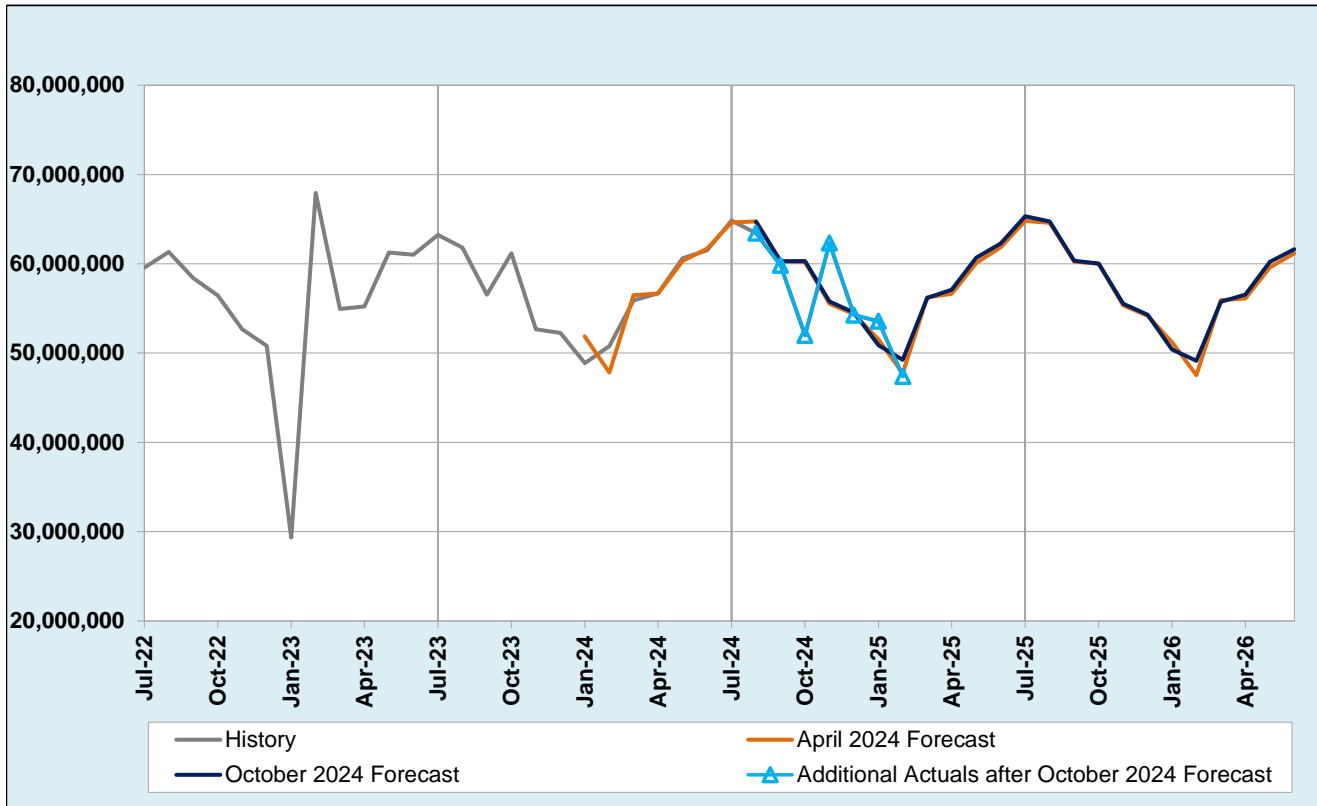
Total Highway Fees include: Motor Fuels, Commerce and Compliance Fees, Driver and Motor Vehicle Highway Fees, as well as Vehicle Use Tax and Other Highway Revenues.

Month	Actual *	October 2024 Current	Over/Under Forecast (October 2024)		April 2024 Budget Forecast	Over/Under Forecast (April 2024)	
Aug-22	\$155,866,784	-	-	-	-	-	-
Sep-22	\$138,484,032	-	-	-	-	-	-
Oct-22	\$142,689,120	-	-	-	-	-	-
Nov-22	\$136,062,992	-	-	-	-	-	-
Dec-22	\$143,845,616	-	-	-	-	-	-
Jan-23	\$111,769,944	-	-	-	-	-	-
Feb-23	\$143,193,072	-	-	-	-	-	-
Mar-23	\$138,901,920	-	-	-	-	-	-
Apr-23	\$135,464,000	-	-	-	-	-	-
May-23	\$153,702,960	-	-	-	-	-	-
Jun-23	\$141,717,504	-	-	-	-	-	-
Jul-23	\$154,667,776	-	-	-	-	-	-
Aug-23	\$154,575,104	-	-	-	-	-	-
Sep-23	\$137,405,312	-	-	-	-	-	-
Oct-23	\$152,601,312	-	-	-	-	-	-
Nov-23	\$141,344,704	-	-	-	-	-	-
Dec-23	\$138,276,720	-	-	-	-	-	-
Jan-24	\$131,818,792	-	-	-	\$131,801,248	\$17,544	0.0%
Feb-24	\$134,359,216	-	-	-	\$126,218,048	\$8,141,168	6.5%
Mar-24	\$136,475,680	-	-	-	\$144,431,648	-\$7,955,968	-5.5%
Apr-24	\$146,500,608	-	-	-	\$142,164,032	\$4,336,576	3.1%
May-24	\$153,289,504	-	-	-	\$149,318,928	\$3,970,576	2.7%
Jun-24	\$139,030,768	-	-	-	\$147,795,536	-\$8,764,768	-5.9%
Jul-24	\$159,918,192	-	-	-	\$152,772,544	\$7,145,648	4.7%
Aug-24	<b>\$155,095,712</b>	\$165,653,312	-\$10,557,600	-6.4%	\$161,063,664	-\$5,967,952	-3.7%
Sep-24	<b>\$141,344,592</b>	\$145,281,248	-\$3,936,656	-2.7%	\$142,979,168	-\$1,634,576	-1.1%
Oct-24	<b>\$147,205,936</b>	\$152,694,912	-\$5,488,976	-3.6%	\$150,919,904	-\$3,713,968	-2.5%
Nov-24	<b>\$145,656,592</b>	\$151,257,616	-\$5,601,024	-3.7%	\$146,366,144	-\$709,552	-0.5%
Dec-24	<b>\$151,414,032</b>	\$152,794,768	-\$1,380,736	-0.9%	\$151,300,752	\$113,280	0.1%
Jan-25	<b>\$156,046,784</b>	\$137,755,392	\$18,291,392	13.3%	\$135,110,864	\$20,935,920	15.5%
Feb-25	<b>\$132,575,504</b>	\$134,418,432	-\$1,842,928	-1.4%	\$128,012,704	\$4,562,800	3.6%
Mar-25	-	\$144,889,680	-	-	\$145,859,920	-	-
Apr-25	-	\$148,079,760	-	-	\$144,694,448	-	-
<b>Cumulative Over/Under Forecast</b>			<b>-\$10,516,528</b>	<b>-1.0%</b>		<b>\$20,476,728</b>	<b>1.0%</b>

\* Total highway actuals are not final because of lags in getting the actuals in certain program areas. In the cases when actuals are lagging the forecasted revenues are used instead, for that reason historic actuals will be adjusted each month as data

### Total Motor Fuels Fees

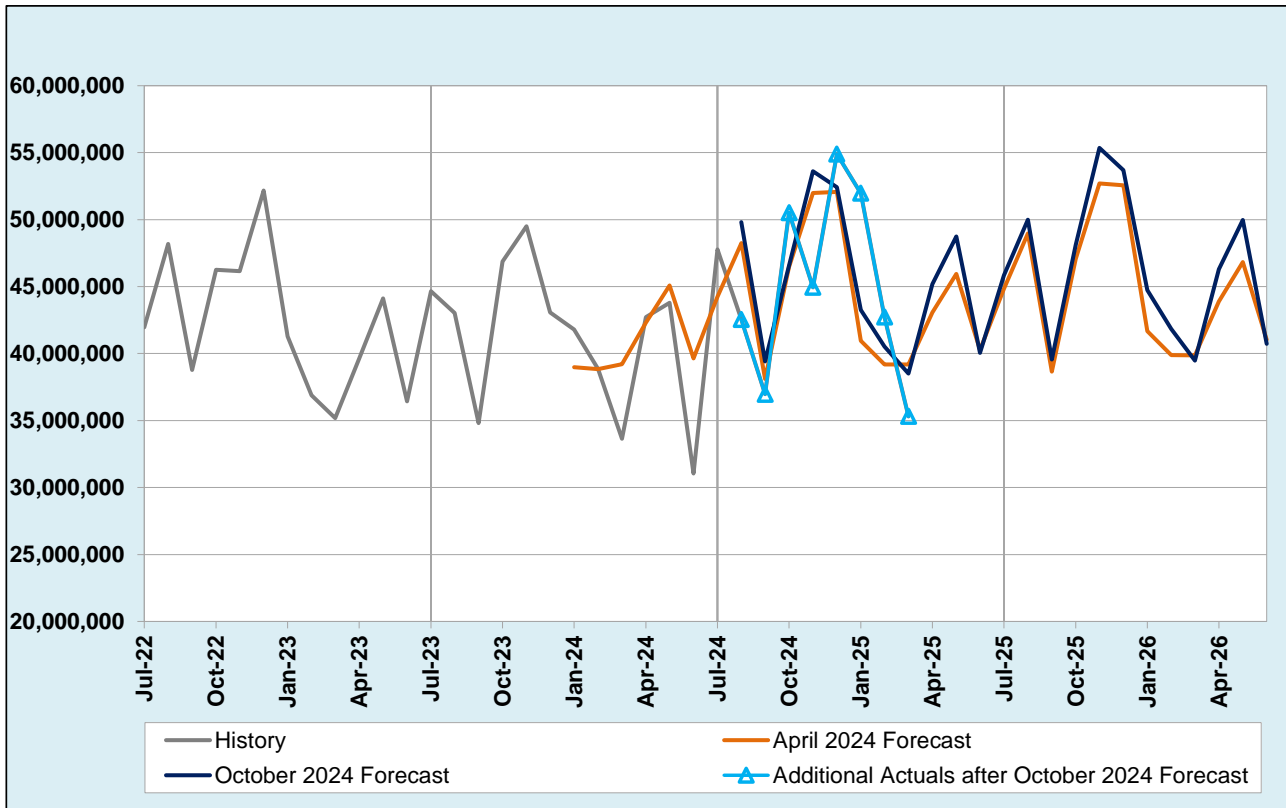
Motor Fuels includes revenues collected on taxable fuel sells including gasoline and diesel. Current rate is \$0.40 per gallon.



Month	Actual	October 2024 Forecast	Over/Under Forecast (October 2024)		April 2024 Forecast	Over/Under Forecast (April 2024)	
Jan-24	\$48,876,822	-	-	-	\$51,877,284	-\$3,000,462	-5.8%
Feb-24	\$50,783,497	-	-	-	\$47,828,432	\$2,955,065	6.2%
Mar-24	\$55,915,838	-	-	-	\$56,479,236	-\$563,398	-1.0%
Apr-24	\$56,717,014	-	-	-	\$56,684,216	\$32,798	0.1%
May-24	\$60,612,983	-	-	-	\$60,308,128	\$304,855	0.5%
Jun-24	\$61,525,446	-	-	-	\$61,680,228	-\$154,782	-0.3%
Jul-24	\$64,831,173	-	-	-	\$64,629,296	\$201,877	0.3%
Aug-24	<b>\$63,436,316</b>	\$64,712,324	-\$1,276,008	-2.0%	\$64,731,836	-\$1,295,520	-2.0%
Sep-24	<b>\$59,843,243</b>	\$60,290,288	-\$447,045	-0.7%	\$60,349,572	-\$506,329	-0.8%
Oct-24	<b>\$51,984,320</b>	\$60,320,016	-\$8,335,696	-13.8%	\$60,200,560	-\$8,216,240	-13.6%
Nov-24	<b>\$62,312,146</b>	\$55,772,064	\$6,540,082	11.7%	\$55,519,768	\$6,792,378	12.2%
Dec-24	<b>\$54,261,739</b>	\$54,556,044	-\$294,305	-0.5%	\$54,373,768	-\$112,029	-0.2%
Jan-25	<b>\$53,573,569</b>	\$50,878,740	\$2,694,829	5.3%	\$51,538,864	\$2,034,705	3.9%
Feb-25	<b>\$47,386,208</b>	\$49,259,404	-\$1,873,196	-3.8%	\$47,730,896	-\$344,688	-0.7%
Mar-25	-	\$56,180,524	-	-	\$56,231,916	-	-
Apr-25	-	\$57,094,516	-	-	\$56,640,892	-	-
<b>Cumulative Over/Under Forecast</b>			<b>-\$2,991,338</b>	<b>-0.8%</b>		<b>-\$1,871,769</b>	<b>-0.2%</b>

### Total Commerce and Compliance (CCD) Fees

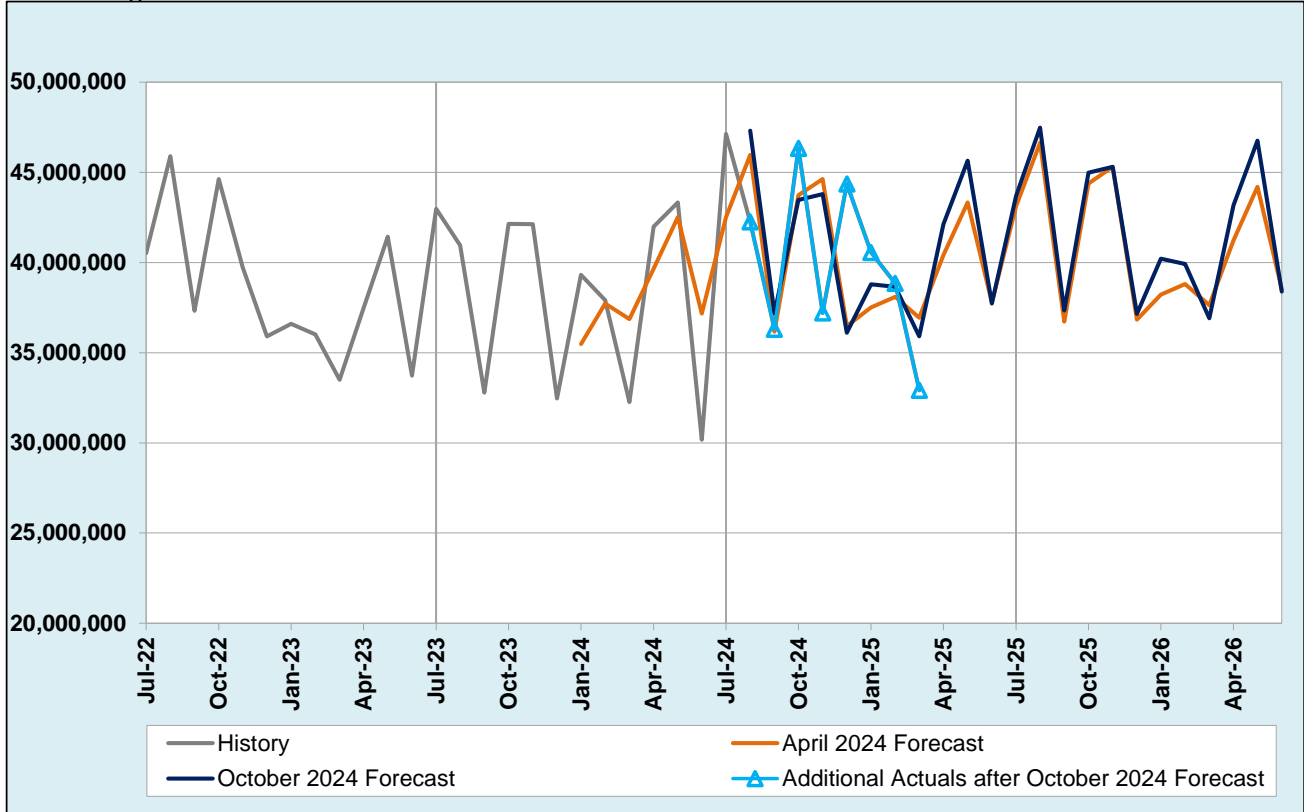
Commerce and Compliance fees include weight-mile revenues and registration fees for heavy-duty commercial vehicles.



Month	Actual	October 2024 Forecast	Over/Under Forecast (October 2024)		April 2024 Forecast	Over/Under Forecast (April 2024)	
Jan-24	\$41,788,744	-	-	-	\$38,976,832	\$2,811,912	7.2%
Feb-24	\$38,855,788	-	-	-	\$38,832,800	\$22,988	0.1%
Mar-24	\$33,644,004	-	-	-	\$39,202,896	-\$5,558,892	-14.2%
Apr-24	\$42,717,436	-	-	-	\$42,316,516	\$400,920	0.9%
May-24	\$43,783,092	-	-	-	\$45,081,244	-\$1,298,152	-2.9%
Jun-24	\$31,048,604	-	-	-	\$39,640,820	-\$8,592,216	-21.7%
Jul-24	\$47,774,136	-	-	-	\$44,234,856	\$3,539,280	8.0%
Aug-24	<b>\$42,541,752</b>	\$49,814,072	-\$7,272,320	-14.6%	\$48,256,808	-\$5,715,056	-11.8%
Sep-24	<b>\$36,962,620</b>	\$39,421,616	-\$2,458,996	-6.2%	\$38,105,708	-\$1,143,088	-3.0%
Oct-24	<b>\$50,523,832</b>	\$46,571,012	\$3,952,820	8.5%	\$46,455,624	\$4,068,208	8.8%
Nov-24	<b>\$44,943,168</b>	\$53,612,784	-\$8,669,616	-16.2%	\$51,986,680	-\$7,043,512	-13.5%
Dec-24	<b>\$54,891,416</b>	\$52,414,536	\$2,476,880	4.7%	\$52,063,836	\$2,827,580	5.4%
Jan-25	<b>\$51,976,924</b>	\$43,264,028	\$8,712,896	20.1%	\$40,956,956	\$11,019,968	26.9%
Feb-25	<b>\$42,730,960</b>	\$40,515,940	\$2,215,020	5.5%	\$39,182,700	\$3,548,260	9.1%
Mar-25	<b>\$35,307,456</b>	\$38,509,132	-\$3,201,676	-8.3%	\$39,184,172	-\$3,876,716	-9.9%
Apr-25	-	\$45,191,060	-	-	\$43,070,520	-	-
<b>Cumulative Over/Under Forecast</b>			<b>-\$4,244,992</b>	<b>-1.2%</b>		<b>-\$4,988,516</b>	<b>-0.8%</b>

### CCD Weight Mile Tax Revenue (Highway Use)

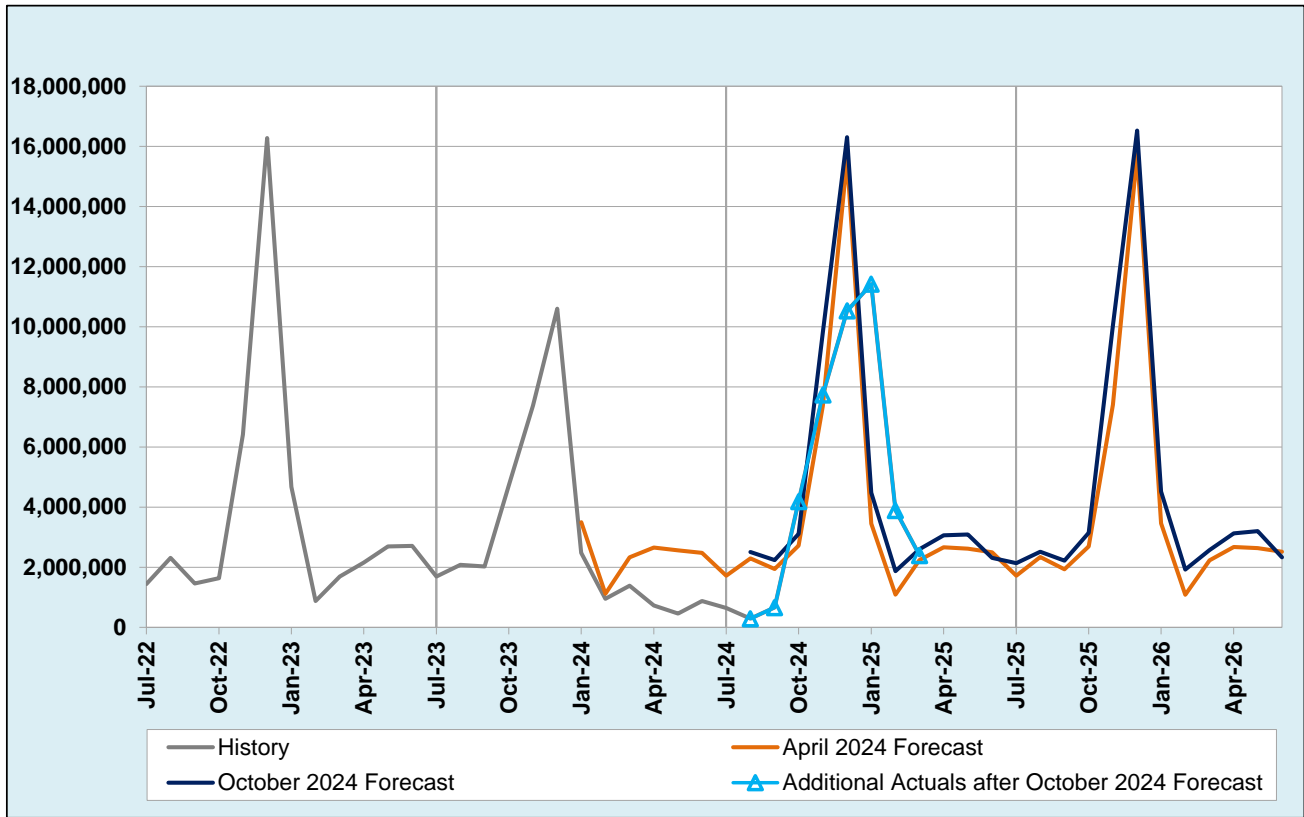
The weight-mile tax is the largest source of trucking-related revenue at just under 90 percent of total revenue collected by CCD. This highway use tax applies to trucks with a gross weight over 26,000 pounds. The tax paid by a motor carrier varies with the weight of the vehicle, the number of miles traveled, and the axle configuration.



Month	Actual	October 2024 Forecast	Over/Under Forecast (October 2024)		April 2024 Forecast	Over/Under Forecast (April 2024)	
Jan-24	\$39,311,078	-	-	-	\$35,482,172	\$3,828,906	10.8%
Feb-24	\$37,906,211	-	-	-	\$37,719,588	\$186,623	0.5%
Mar-24	\$32,261,818	-	-	-	\$36,869,076	-\$4,607,258	-12.5%
Apr-24	\$41,992,587	-	-	-	\$39,662,524	\$2,330,063	5.9%
May-24	\$43,325,917	-	-	-	\$42,517,228	\$808,689	1.9%
Jun-24	\$30,173,026	-	-	-	\$37,163,972	-\$6,990,946	-18.8%
Jul-24	\$47,130,502	-	-	-	\$42,516,716	\$4,613,786	10.9%
Aug-24	<b>\$42,251,765</b>	\$47,307,008	-\$5,055,243	-10.7%	\$45,961,476	-\$3,709,711	-8.1%
Sep-24	<b>\$36,300,609</b>	\$37,179,560	-\$878,951	-2.4%	\$36,167,496	\$133,113	0.4%
Oct-24	<b>\$46,333,012</b>	\$43,465,096	\$2,867,916	6.6%	\$43,734,008	\$2,599,004	5.9%
Nov-24	<b>\$37,206,269</b>	\$43,796,576	-\$6,590,307	-15.0%	\$44,621,944	-\$7,415,675	-16.6%
Dec-24	<b>\$44,362,006</b>	\$36,111,352	\$8,250,654	22.8%	\$36,476,740	\$7,885,266	21.6%
Jan-25	<b>\$40,561,092</b>	\$38,788,176	\$1,772,916	4.6%	\$37,505,012	\$3,056,080	8.1%
Feb-25	<b>\$38,840,159</b>	\$38,646,944	\$193,215	0.5%	\$38,097,148	\$743,011	2.0%
Mar-25	<b>\$32,913,415</b>	\$35,910,952	-\$2,997,537	-8.3%	\$36,944,440	-\$4,031,025	-10.9%
Apr-25	-	\$42,130,744	-	-	\$40,409,472	-	-
<b>Cumulative Over/Under Forecast</b>			<b>-\$2,437,337</b>	<b>-0.8%</b>		<b>-\$570,074</b>	<b>-0.1%</b>

## CCD Registration Fee

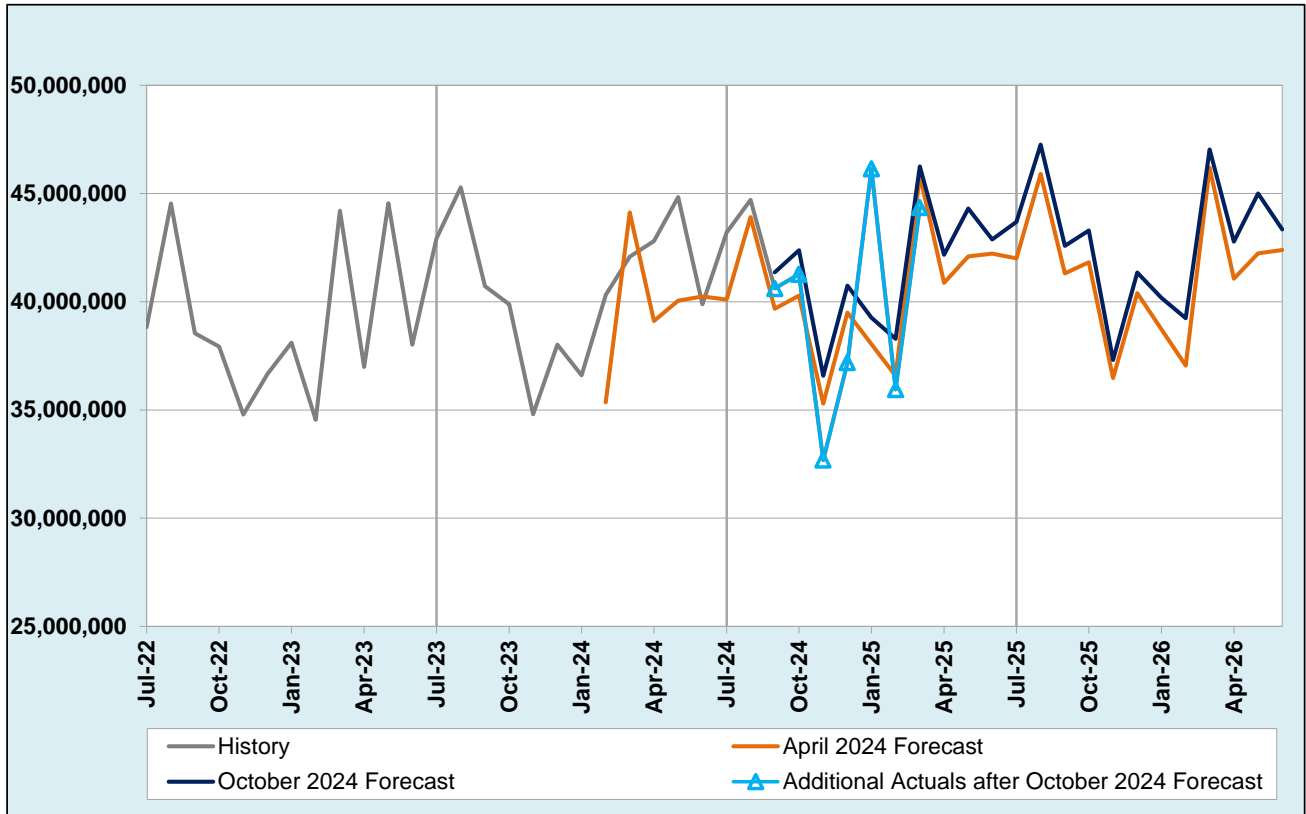
Heavy trucks pay annual registration fees and other trip based fees that are included here.



Month	Actual	October 2024 Forecast	Over/Under Forecast (October 2024)		April 2024 Forecast	Over/Under Forecast (April 2024)	
Jan-24	\$2,477,667	-	-	-	\$3,494,660	-\$1,016,993	-29.1%
Feb-24	\$949,575	-	-	-	\$1,113,213	-\$163,638	-14.7%
Mar-24	\$1,382,188	-	-	-	\$2,333,819	-\$951,631	-40.8%
Apr-24	\$724,848	-	-	-	\$2,653,993	-\$1,929,145	-72.7%
May-24	\$457,175	-	-	-	\$2,564,015	-\$2,106,839	-82.2%
Jun-24	\$875,579	-	-	-	\$2,476,848	-\$1,601,269	-64.6%
Jul-24	\$643,635	-	-	-	\$1,718,141	-\$1,074,506	-62.5%
Aug-24	\$289,986	\$2,507,063	-\$2,217,076	-88.4%	\$2,295,332	-\$2,005,346	-87.4%
Sep-24	\$662,010	\$2,242,054	-\$1,580,044	-70.5%	\$1,938,213	-\$1,276,203	-65.8%
Oct-24	\$4,190,820	\$3,105,917	\$1,084,902	34.9%	\$2,721,616	\$1,469,203	54.0%
Nov-24	\$7,736,899	\$9,816,209	-\$2,079,310	-21.2%	\$7,364,734	\$372,165	5.1%
Dec-24	\$10,529,411	\$16,303,186	-\$5,773,776	-35.4%	\$15,587,096	-\$5,057,686	-32.4%
Jan-25	\$11,415,832	\$4,475,853	\$6,939,979	155.1%	\$3,451,943	\$7,963,889	230.7%
Feb-25	\$3,890,802	\$1,868,995	\$2,021,808	108.2%	\$1,085,552	\$2,805,251	258.4%
Mar-25	\$2,394,042	\$2,598,181	-\$204,139	-7.9%	\$2,239,732	\$154,309	6.9%
Apr-25	-	\$3,060,315	-	-	\$2,661,049	-	-
<b>Cumulative Over/Under Forecast</b>			<b>-\$1,807,656</b>	<b>-4.4%</b>		<b>-\$4,418,438</b>	<b>-9.1%</b>

## Total Driver and Motor Vehicle (DMV) Highway Fees

The Vehicle program area contains the transactions related to legal ownership and operation of a vehicle, including titling, plates, registrations, and permits. The Driver program contains the transactions related to the legal right to operate a vehicle, including permits, licenses, endorsements, and the associated tests to obtain these rights to drive.

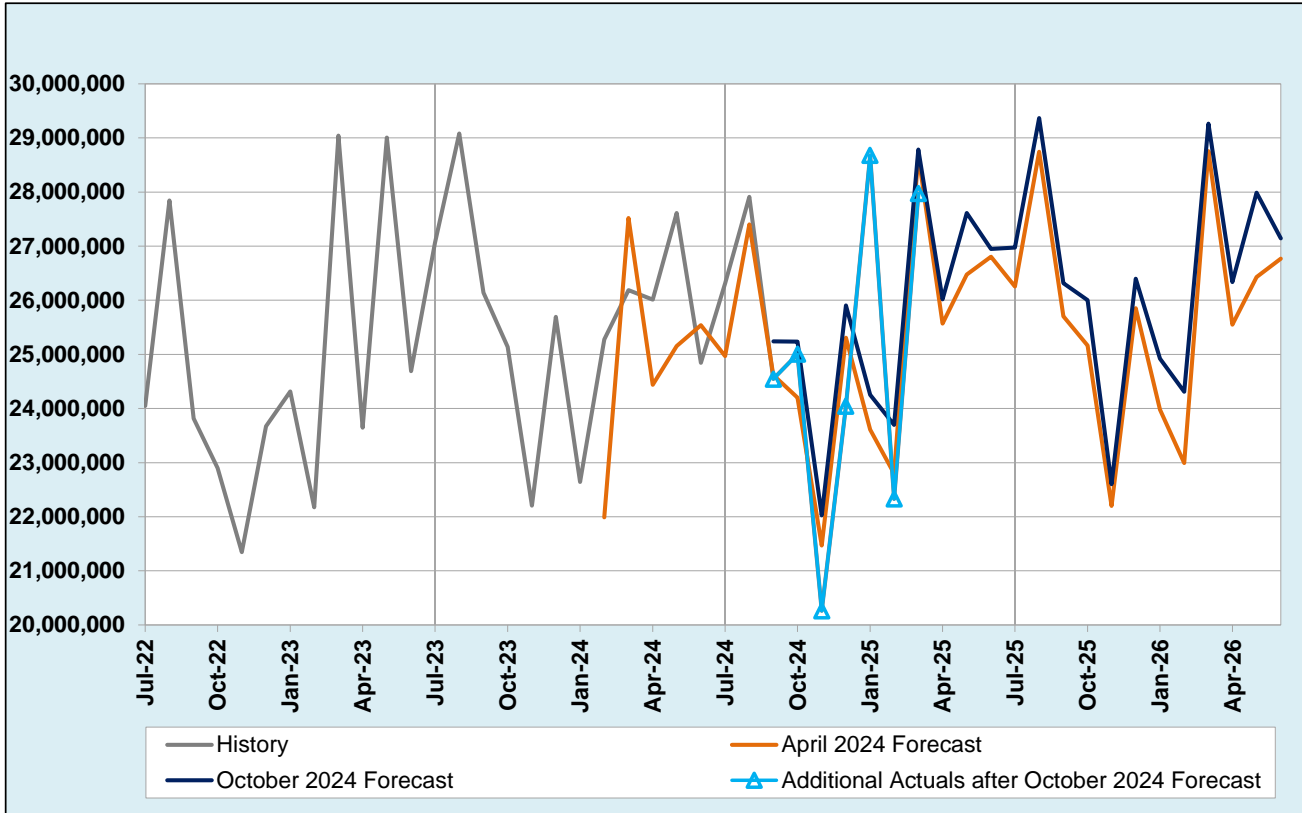


Month	Actual	October 2024 Forecast	Over/Under Forecast (October 2024)		April 2024 Forecast	Over/Under Forecast (April 2024)	
Feb-24	\$40,313,668	-	-	-	\$35,358,292	\$4,955,376	14.0%
Mar-24	\$42,087,280	-	-	-	\$44,126,656	-\$2,039,376	-4.6%
Apr-24	\$42,799,868	-	-	-	\$39,106,344	\$3,693,524	9.4%
May-24	\$44,829,728	-	-	-	\$40,051,544	\$4,778,184	11.9%
Jun-24	\$39,877,372	-	-	-	\$40,242,596	-\$365,224	-0.9%
Jul-24	\$43,200,732	-	-	-	\$40,099,084	\$3,101,648	7.7%
Aug-24	\$44,710,144	-	-	-	\$43,902,940	\$807,204	1.8%
Sep-24	<b>\$40,609,560</b>	\$41,360,948	-\$751,388	-1.8%	\$39,679,004	\$930,556	2.3%
Oct-24	<b>\$41,269,800</b>	\$42,375,712	-\$1,105,912	-2.6%	\$40,285,184	\$984,616	2.4%
Nov-24	<b>\$32,684,740</b>	\$36,581,328	-\$3,896,588	-10.7%	\$35,294,560	-\$2,609,820	-7.4%
Dec-24	<b>\$37,184,932</b>	\$40,748,232	-\$3,563,300	-8.7%	\$39,499,268	-\$2,314,336	-5.9%
Jan-25	<b>\$46,144,556</b>	\$39,260,888	\$6,883,668	17.5%	\$38,045,228	\$8,099,328	21.3%
Feb-25	<b>\$35,940,788</b>	\$38,285,408	-\$2,344,620	-6.1%	\$36,570,924	-\$630,136	-1.7%
Mar-25	<b>\$44,346,408</b>	\$46,248,192	-\$1,901,784	-4.1%	\$45,832,544	-\$1,486,136	-3.2%
Apr-25	-	\$42,166,224	-	-	\$40,869,252	-	-
May-25	-	\$44,309,776	-	-	\$42,095,820	-	-
<b>Cumulative Over/Under Forecast</b>			<b>-\$6,679,924</b>	<b>-2.4%</b>		<b>\$17,905,408</b>	<b>3.1%</b>



## DMV - Vehicle Registration Fees

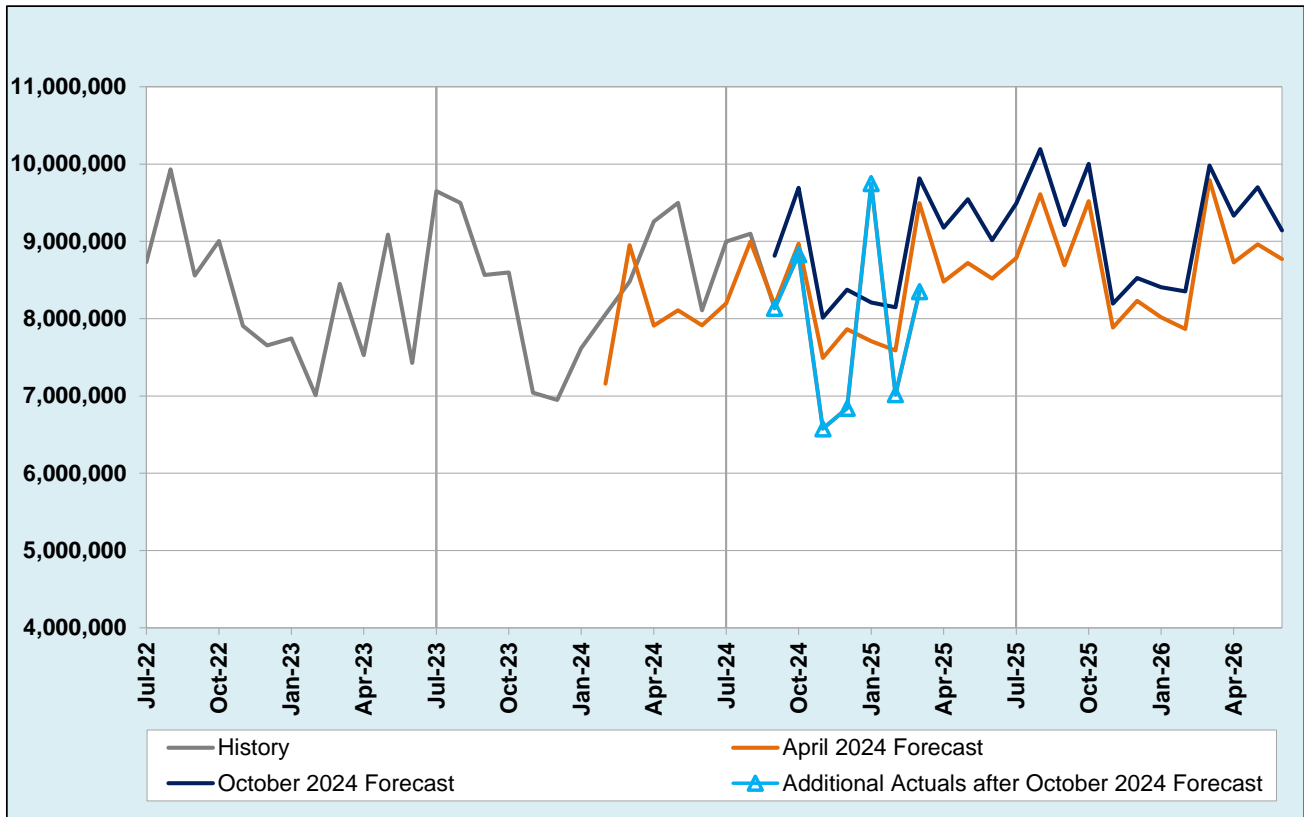
This includes: light duty vehicle registrations such as passenger vehicles and motorcycles/mopeds as well as medium-heavy duty vehicle registrations that are not subject to weight-mile taxation (farm trucks, buses, motor homes, trailers, campers, etc.)



Month	Actual	October 2024 Forecast	Over/Under Forecast (October 2024)		April 2024 Forecast	Over/Under Forecast (April 2024)	
Feb-24	\$25,276,849	-	-	-	\$21,990,340	\$3,286,509	14.9%
Mar-24	\$26,189,960	-	-	-	\$27,518,330	-\$1,328,370	-4.8%
Apr-24	\$26,014,791	-	-	-	\$24,440,278	\$1,574,513	6.4%
May-24	\$27,612,120	-	-	-	\$25,151,234	\$2,460,886	9.8%
Jun-24	\$24,843,176	-	-	-	\$25,536,760	-\$693,584	-2.7%
Jul-24	\$26,309,211	-	-	-	\$24,967,768	\$1,341,443	5.4%
Aug-24	\$27,909,048	-	-	-	\$27,399,920	\$509,128	1.9%
Sep-24	<b>\$24,543,983</b>	\$25,241,206	-\$697,223	-2.8%	\$24,618,974	-\$74,991	-0.3%
Oct-24	<b>\$25,006,407</b>	\$25,235,796	-\$229,389	-0.9%	\$24,200,808	\$805,599	3.3%
Nov-24	<b>\$20,261,814</b>	\$22,025,556	-\$1,763,743	-8.0%	\$21,468,102	-\$1,206,289	-5.6%
Dec-24	<b>\$24,044,611</b>	\$25,903,872	-\$1,859,261	-7.2%	\$25,306,616	-\$1,262,005	-5.0%
Jan-25	<b>\$28,679,047</b>	\$24,251,060	\$4,427,987	18.3%	\$23,607,492	\$5,071,555	21.5%
Feb-25	<b>\$22,328,865</b>	\$23,698,826	-\$1,369,961	-5.8%	\$22,796,190	-\$467,325	-2.1%
Mar-25	<b>\$27,975,015</b>	\$28,783,364	-\$808,350	-2.8%	\$28,680,898	-\$705,884	-2.5%
Apr-25	-	\$26,019,338	-	-	\$25,569,436	-	-
May-25	-	\$27,614,952	-	-	\$26,476,940	-	-
<b>Cumulative Over/Under Forecast</b>			<b>-\$2,299,939</b>	<b>-1.3%</b>		<b>\$9,311,185</b>	<b>2.6%</b>

### DMV - Vehicle Title Fees

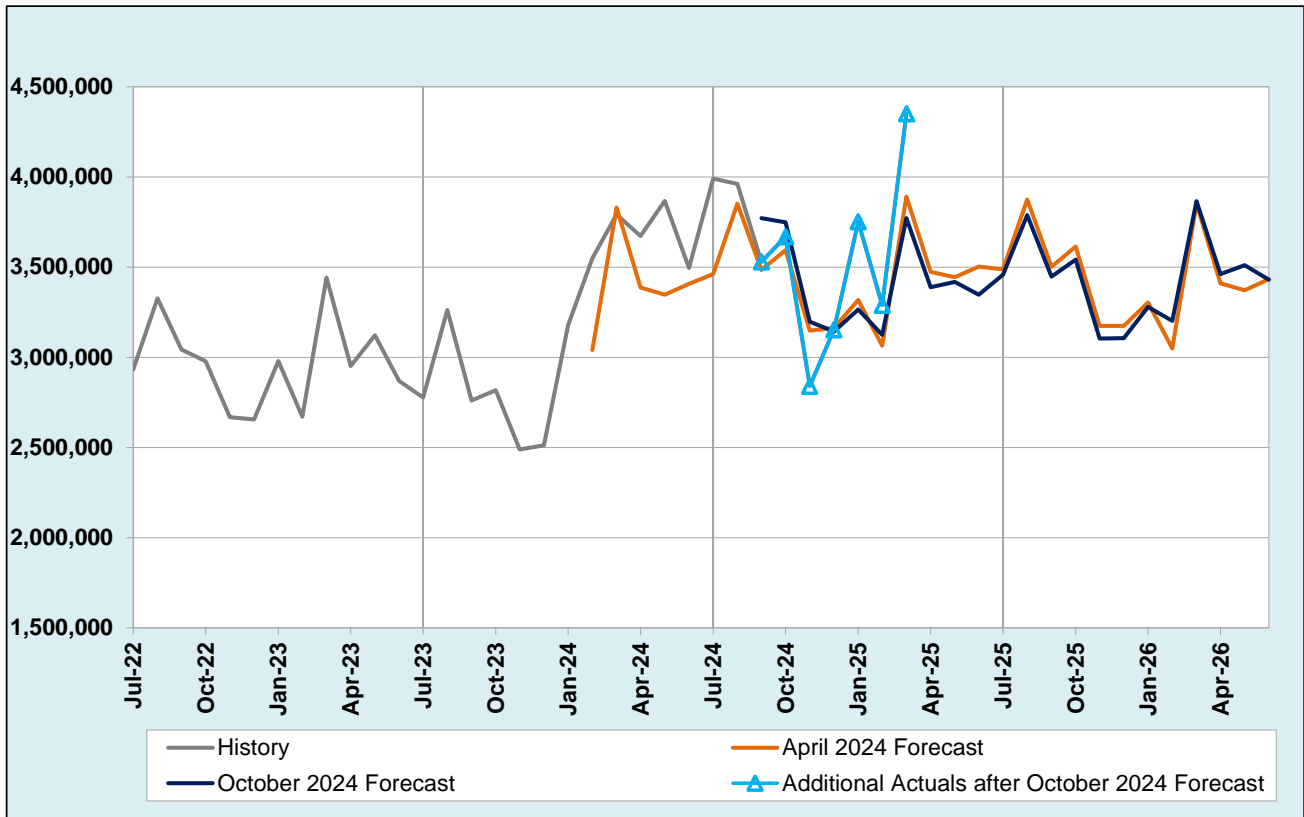
This includes: standard title, heavy vehicle title, salvage title, and ATV title. Snowmobile title is not included because the funds go to sno-parks.



Month	Actual	October 2024 Forecast	Over/Under Forecast (October 2024)		April 2024 Forecast	Over/Under Forecast (April 2024)	
Feb-24	\$8,054,694	-	-	-	\$7,158,954	\$895,740	12.5%
Mar-24	\$8,477,463	-	-	-	\$8,950,639	-\$473,176	-5.3%
Apr-24	\$9,258,136	-	-	-	\$7,910,344	\$1,347,793	17.0%
May-24	\$9,499,060	-	-	-	\$8,106,208	\$1,392,853	17.2%
Jun-24	\$8,106,525	-	-	-	\$7,914,933	\$191,592	2.4%
Jul-24	\$8,996,369	-	-	-	\$8,198,371	\$797,998	9.7%
Aug-24	\$9,098,031	-	-	-	\$8,996,527	\$101,504	1.1%
Sep-24	<b>\$8,134,170</b>	\$8,812,207	-\$678,037	-7.7%	\$8,177,506	-\$43,336	-0.5%
Oct-24	<b>\$8,828,665</b>	\$9,692,252	-\$863,587	-8.9%	\$8,969,915	-\$141,250	-1.6%
Nov-24	<b>\$6,576,644</b>	\$8,012,889	-\$1,436,245	-17.9%	\$7,491,082	-\$914,438	-12.2%
Dec-24	<b>\$6,840,846</b>	\$8,375,863	-\$1,535,017	-18.3%	\$7,864,843	-\$1,023,997	-13.0%
Jan-25	<b>\$9,747,062</b>	\$8,207,695	\$1,539,367	18.8%	\$7,709,988	\$2,037,074	26.4%
Feb-25	<b>\$7,017,277</b>	\$8,148,258	-\$1,130,981	-13.9%	\$7,589,239	-\$571,962	-7.5%
Mar-25	<b>\$8,351,445</b>	\$9,814,242	-\$1,462,797	-14.9%	\$9,495,290	-\$1,143,845	-12.0%
Apr-25	-	\$9,177,178	-	-	\$8,478,554	-	-
May-25	-	\$9,543,609	-	-	\$8,718,704	-	-
<b>Cumulative Over/Under Forecast</b>			<b>-\$5,567,296</b>	<b>-10.0%</b>		<b>\$2,452,551</b>	<b>2.1%</b>

### DMV - Driver Fees (Highway Fund)

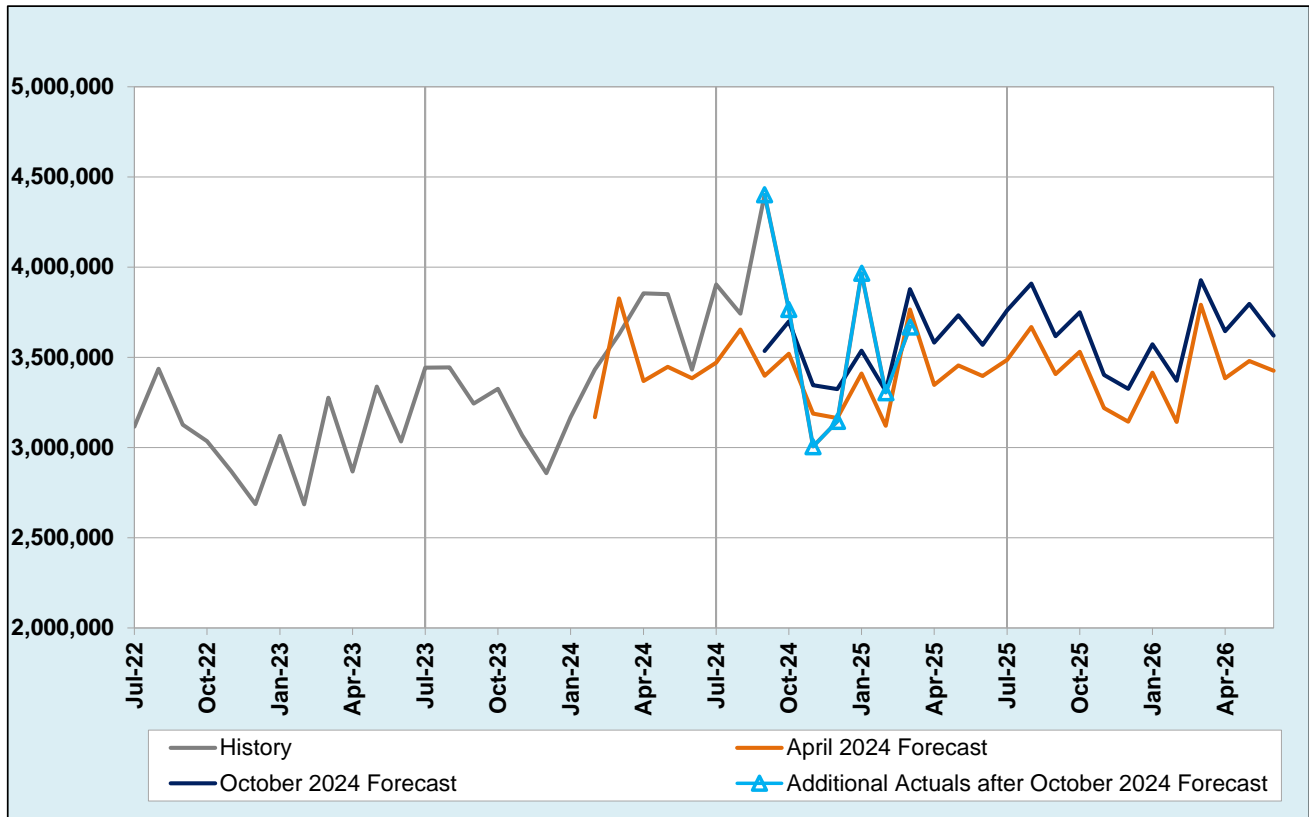
This includes: commercial and non-commercial driver licenses, commercial and non-commercial knowledge and skill tests, and driver endorsements.



Month	Actual	October 2024 Forecast	Over/Under Forecast (October 2024)		April 2024 Forecast	Over/Under Forecast (April 2024)	
Feb-24	\$3,549,688	-	-	-	\$3,040,518	\$509,170	16.7%
Mar-24	\$3,791,835	-	-	-	\$3,830,859	-\$39,024	-1.0%
Apr-24	\$3,671,991	-	-	-	\$3,386,630	\$285,361	8.4%
May-24	\$3,867,658	-	-	-	\$3,346,367	\$521,291	15.6%
Jun-24	\$3,495,728	-	-	-	\$3,407,105	\$88,623	2.6%
Jul-24	\$3,991,119	-	-	-	\$3,461,897	\$529,222	15.3%
Aug-24	\$3,961,361	-	-	-	\$3,851,749	\$109,612	2.8%
Sep-24	<b>\$3,529,727</b>	\$3,771,964	-\$242,237	-6.4%	\$3,483,800	\$45,927	1.3%
Oct-24	<b>\$3,669,279</b>	\$3,748,426	-\$79,147	-2.1%	\$3,594,617	\$74,663	2.1%
Nov-24	<b>\$2,840,490</b>	\$3,197,541	-\$357,051	-11.2%	\$3,147,278	-\$306,788	-9.7%
Dec-24	<b>\$3,153,985</b>	\$3,143,842	\$10,143	0.3%	\$3,163,646	-\$9,661	-0.3%
Jan-25	<b>\$3,751,970</b>	\$3,265,619	\$486,352	14.9%	\$3,317,656	\$434,314	13.1%
Feb-25	<b>\$3,289,406</b>	\$3,124,902	\$164,504	5.3%	\$3,064,686	\$224,720	7.3%
Mar-25	<b>\$4,350,768</b>	\$3,771,962	\$578,806	15.3%	\$3,890,822	\$459,946	11.8%
Apr-25	-	\$3,388,457	-	-	\$3,473,353	-	-
May-25	-	\$3,418,027	-	-	\$3,444,333	-	-
<b>Cumulative Over/Under Forecast</b>			<b>\$561,371</b>	<b>2.3%</b>		<b>\$2,927,376</b>	<b>5.7%</b>

### Other DMV (Highway Fund)

This includes highway fees collected from: business regulations (highway fund only), trip permit fees, plate fees, record sales, and miscellaneous vehicle transactions (VIN inspection, surcharges, and penalties).



Month	Actual	October 2024 Forecast	Over/Under Forecast (October 2024)		April 2024 Forecast	Over/Under Forecast (April 2024)	
Feb-24	\$3,432,439	-	-	-	\$3,168,479	\$263,961	8.3%
Mar-24	\$3,628,020	-	-	-	\$3,826,826	-\$198,806	-5.2%
Apr-24	\$3,854,952	-	-	-	\$3,369,091	\$485,861	14.4%
May-24	\$3,850,892	-	-	-	\$3,447,734	\$403,158	11.7%
Jun-24	\$3,431,943	-	-	-	\$3,383,796	\$48,146	1.4%
Jul-24	\$3,904,033	-	-	-	\$3,471,048	\$432,986	12.5%
Aug-24	\$3,741,702	-	-	-	\$3,654,746	\$86,956	2.4%
Sep-24	<b>\$4,401,680</b>	\$3,535,572	\$866,107	24.5%	\$3,398,726	\$1,002,954	29.5%
Oct-24	<b>\$3,765,448</b>	\$3,699,238	\$66,209	1.8%	\$3,519,843	\$245,605	7.0%
Nov-24	<b>\$3,005,793</b>	\$3,345,345	-\$339,552	-10.1%	\$3,188,097	-\$182,305	-5.7%
Dec-24	<b>\$3,145,491</b>	\$3,324,655	-\$179,165	-5.4%	\$3,164,163	-\$18,673	-0.6%
Jan-25	<b>\$3,966,476</b>	\$3,536,514	\$429,961	12.2%	\$3,410,089	\$556,386	16.3%
Feb-25	<b>\$3,305,240</b>	\$3,313,423	-\$8,183	-0.2%	\$3,120,808	\$184,432	5.9%
Mar-25	<b>\$3,669,181</b>	\$3,878,625	-\$209,443	-5.4%	\$3,765,534	-\$96,352	-2.6%
Apr-25	-	\$3,581,252	-	-	\$3,347,911	-	-
May-25	-	\$3,733,188	-	-	\$3,455,843	-	-
<b>Cumulative Over/Under Forecast</b>			<b>\$625,935</b>	<b>2.5%</b>		<b>\$3,214,308</b>	<b>6.3%</b>