

Align DGN Data for OpenSite Designer Editing

This document is for Surveyors and Hydraulic Designers who have created DGN civil data using OpenRoads Designer. DGN civil data that was created or was last edited with OpenRoads Designer, must be aligned to OpenSite Designer before it may be edited with OpenSite Designer.

Table of Contents Links

[Recommendations for When and How to Align Data](#)

[Instructions for Aligning ProjectWise DGN Data to OpenSite Designer](#)

[Instructions for Aligning Crew Share DGN Data to OpenSite Designer](#)

[Background Information](#)

[Important Facts](#)

[Troubleshooting "Incompatible Civil Data" Message](#)

[Troubleshooting "Civil File Upgrade" Message](#)

Recommendations for When and How to Align Data

When: Immediately after receiving OpenSite Designer, align all your DGN data in active ProjectWise projects.

Aligning data, before trying to edit it with OpenSite Designer, will prevent you from receiving "Incompatible Civil Data" messages.

How: Use ProjectWise to export DGN files (*Export – Locks file*) to a specific folder on your C: drive. Then use the Engineering\V10\Civil File Manager OpenSite Designer shortcut to run the Civil File Manager, open the folder and align all the DGNs in the folder. The last step is to use ProjectWise to import the aligned DGNs.

It is easiest to align a folder, even if you are only aligning one file. DGNs may be exported from different ProjectWise folders to one folder on your computer, streamlining the process to align multiple DGNs.

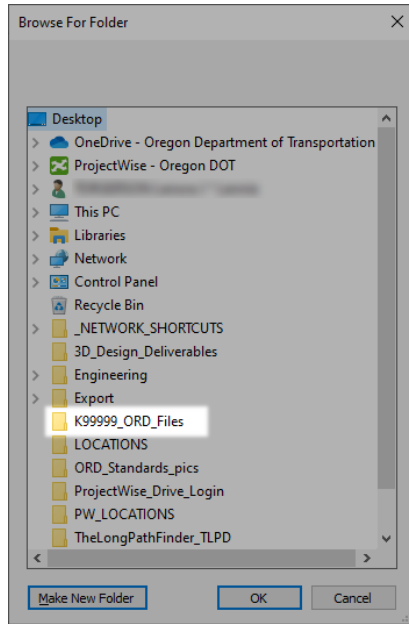
Instructions for Aligning ProjectWise DGN Data to OpenSite Designer

Aligning DGN data to OpenSite Designer can only be performed after the OpenSite Designer software is installed on your computer. A fresh log on after the software is installed will place the necessary shortcuts in your Engineering desktop folder.

The following instructions will explain the process with the fewest steps to align DGN data stored in several different folders in ProjectWise. Use these steps when aligning a single file or when aligning multiple files. Aligning DGNs creates backups of the original data. At the end of this process are instructions for creating a ZIP file for retaining a backup of the ORD files in a server share archive.

1. Prepare the Export Folder: Create a project folder on your computer's desktop to store the exported files. Name the folder **K#####_ORD_Files**.
2. Export the files:
 - a. Open the ProjectWise Explorer and navigate to your active project.
 - b. Use **Export...>Export – Locks File** on "S_" or "H_" DGN files in the 6_Civil_Data folder and on DGN files in the Survey or Hydraulics folder.
 - c. Choose the folder **K#####_ORD_Files** as the Export Folder.
 - d. Choose **[Yes to All]** if prompted to Overwrite. (*This will lock a file that was previously copied out so that you can import the changes.*)
3. Align the DGNs to OpenSite Designer:
 - a. Open File Explorer and navigate to your desktop Engineering\V10 folder.
 - b. Double-click on the **Civil File Manager OpenSite Designer** shortcut.
 - c. Select **File>Open>Folder** on the Civil File Manager dialog.
 - d. **[Cancel]** the ProjectWise Log in dialog and **[Cancel]** the "Select Project" dialog (these are both ProjectWise and the data is on your computer).

- e. In the “Browse For Folder” dialog (which should default to your Desktop), select the **K#####_ORD_Files** folder and click [OK].



- f. Wait for the Civil File Manager to display the Export Folder on the left side list, then select **Action>Align All**.
- g. After the Output tab displays “Product Alignment Complete”, exit the Civil File Manager.
4. Import the aligned files into ProjectWise using the Local Document Organizer:
 - a. Open the ProjectWise Explorer and expand the PW_ODOT_PROD datasource.
 - b. Open the **Local Document Organizer** from the **Tools** menu.
 - c. On the Local Document Organizer dialog, select **View>Exports** to see a list of all the files that you have exported.
 - d. Select one document and type **<Ctrl> + A** to select all the documents in the dialog.
 - e. Select **Action>Import**.
 - f. Enter a Comment, such as, Aligned to OSD – this comment will be placed in the audit trail of every file that is imported in this action.

The DGNs are now aligned to OpenSite Designer which can now be used to open and edit them.

Option - Retain the backup ORD files: All that is left in the K#####_ORD_Files folder after the ProjectWise import, are the *.bak files which are backups of the original ORD-aligned civil data.

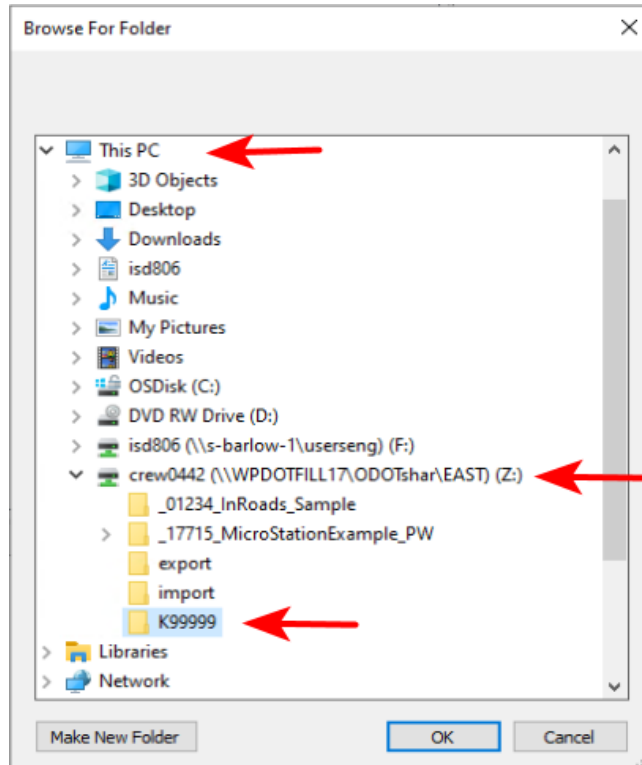
1. Using File Explorer navigate to the Desktop.
2. Right-click on K#####_ORD_Files and choose **Send To> Compressed (zipped) folder**.
3. Copy K#####_ORD_Files.zip to your crew server share for archiving and delete the Export Folder and ZIP file still on your desktop.

Instructions for Aligning Crew Share DGN Data to OpenSite Designer

The following instructions will explain the process with the fewest steps to align DGN data stored in folders in a crew server share. A mapped drive to your crew share is necessary for this process. The example steps below use the Z: drive.

1. Align the DGNs to OpenSite Designer:
 - a. Open File Explorer and navigate to your desktop Engineering\V10 folder.
 - b. Double-click on the **Civil File Manager OpenSite Designer** shortcut.
 - c. Select **File>Open>Folder** on the Civil File Manager dialog.
 - d. [**Cancel**] the ProjectWise Log in dialog and [**Cancel**] the “Select Project” dialog (both dialogs are from ProjectWise and the data is in a crew server share).

- e. In the “Browse For Folder” dialog (which should default to your Desktop), navigate through “This PC” to the mapped drive to your crew share, select a project folder and click [OK].



- f. Wait for the Civil File Manager to display the Folder on the left side list, then select **Action>Align All**.
- g. After the Output tab displays “Product Alignment Complete”, exit the Civil File Manager.

The DGNs in the folder are now aligned to OpenSite Designer which can now be used to open and edit them.

Option - Retain the backup ORD files: The *.bak files in the folder are backups of the original ORD-aligned civil data. You may move the *.bak files to a different folder to keep them separate from your OSD aligned DGN data.

Background Information

OpenSite Designer and OpenRoads Designer use different civil schemas in DGN files. A DGN file that has been edited with OpenRoads Designer cannot be opened for editing with OpenSite Designer without being aligned to OpenSite Designer first, and vice versa. **Files edited with one product may be attached as references to another product and the civil data contained within the DGN is accessible through the reference.** For example, the action "Set as Active Terrain Model", may be performed on a read-only reference attachment. Editing the data and opening the DGN file for editing must be done using the product whose schema matches the schema of the DGN file. The Bentley civil products have a tool that allows the user to align the DGN file schema to each civil product.

When your computer receives the installation of OpenSite Designer, you will be required to align DGN files that you had previously edited using OpenRoads Designer, before those DGNs may be opened for editing with OpenSite Designer. You may align all your civil DGNs in active projects at one sitting, or you may align civil DGNs on an as-needed basis - after you receive an "Incompatible Civil Data" message.

Both OpenRoads Designer and OpenSite Designer are delivered with a Civil File Manager tool that is used to align civil data to each product. A shortcut named "Civil File Manager OpenSite Designer" may be found on each engineering computer with OpenSite Designer installed, in the Engineering\V10

desktop folder. If you find it necessary to align a DGN back to OpenRoads Designer, please request assistance from the Engineering Applications Support Team at odot.east@odot.oregon.gov.

Important Facts

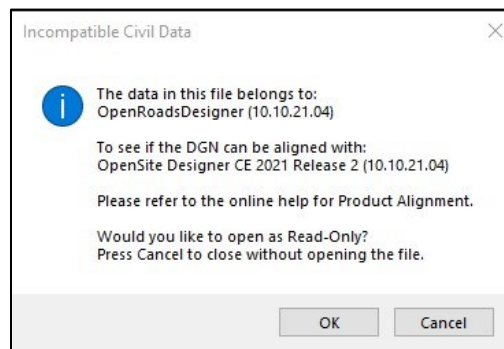
- An attempt to open an ORD-aligned DGN in ProjectWise with OSD, will check out the DGN. **The DGN will be left checked out** after canceling the "Incompatible Civil Data" message. The DGN file should be freed using the ProjectWise Explorer.
- When a folder has been opened in the Civil File Manager - selecting an individual file from the left-side list on the Civil File Manager does **not** limit the action to the one selected file!
- The Civil File Manager ignores DGNs that don't contain civil schema data. You don't need to cherry-pick files when exporting from ProjectWise; export all the files from the Survey folder, for example, you will import an unchanged file if it contained no civil data.
- View>Contents in the Civil File Manager persistently produces a Problem Notification and an abrupt exit - don't use it.
- When files are exported managed (*Export – Locks file*) from ProjectWise, then aligned locally, and finally imported - the *.bak files are retained in the local folder and are not written to the ProjectWise datasource. This allows you to zip the .bak files up and retain the DGNs with their original ORD schema in a crew server share. The *.bak files don't belong in ProjectWise.

Troubleshooting "Incompatible Civil Data" Message

Sometimes things just don't work out the way you expect them to. Below you will find some scenarios that that may happen and see some suggestions.

Scenario 1

I'm using OpenSite Designer and when I try to open a Survey terrain file to edit it, a dialog opens that states, "Incompatible Civil Data". My choices are to click [OK] to open it Read-Only or to press [Cancel] to close.



Suggestion for file owner: Click [Cancel]. The owner of the file should follow the [Instructions for Aligning ProjectWise DGN Data to OpenSite Designer](#) above. After the file has been aligned to OpenSite Designer, you may edit the file.

Suggestion for person who does not own the file: Click [OK] to open the file Read-Only, or click [Cancel] and attach the file as a reference to a file that you own.

Scenario 2

I'm using OpenRoads Designer and when I try to open my Roadway geometry file to edit it, a dialog opens that states, "Incompatible Civil Data". My choices are to click [OK] to open it Read-Only or to press [Cancel] to close.

Suggestion for file owner: Click [Cancel]. If your file has been aligned to a product different than what you use to edit the file, you have a couple of choices: request a restore of the file or align the civil data in the file to OpenRoads Designer. Contact the Engineering Applications Support Team (odot.east@odot.oregon.gov) for assistance in running the Civil File Manager for *OpenRoads Designer*.

Troubleshooting “Civil File Upgrade” Message

It's possible that you may pull some older data off the shelf and align it to OSD. If the data was created with ORD v10.08, you will get a "Civil File Upgrade" information dialog when you open the file for editing using OpenSite Designer v10.10. We upgraded to v10.10 in April 2022.

Go ahead and click [Yes] to upgrade the file to version 10.10 and open it.

