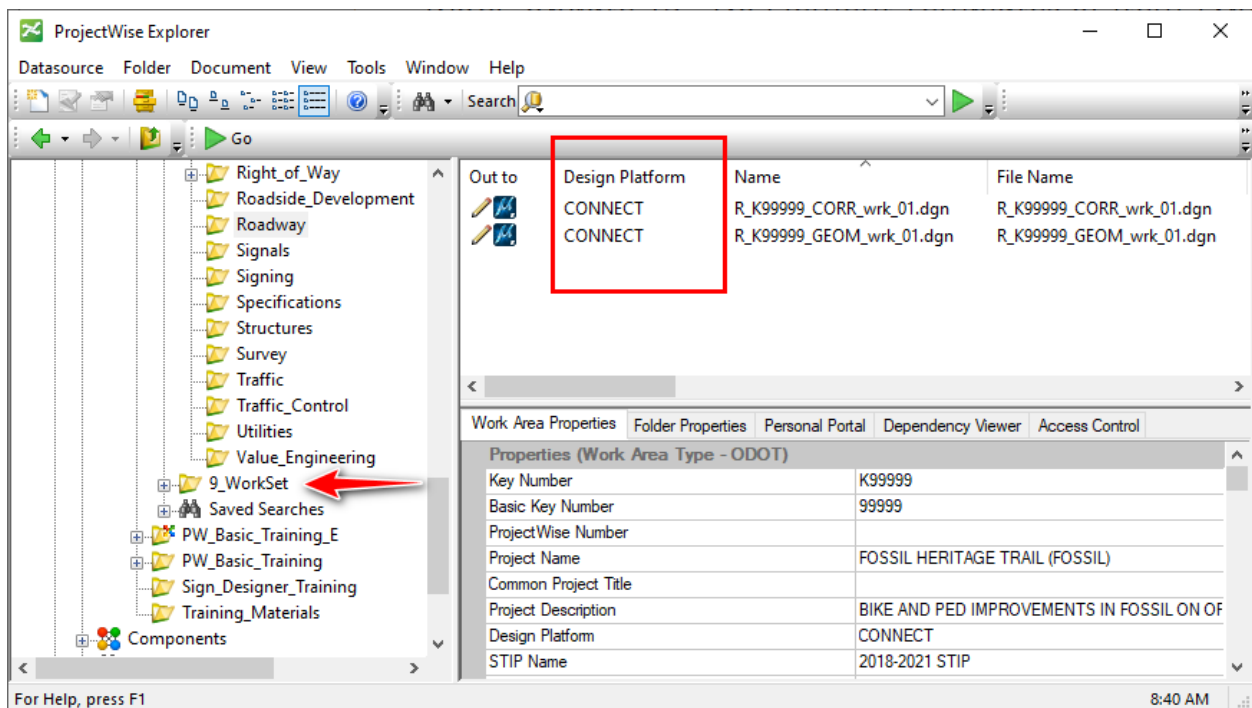


## How to Open DGNs in ProjectWise with MicroStation (OpenRoads Designer is similar)

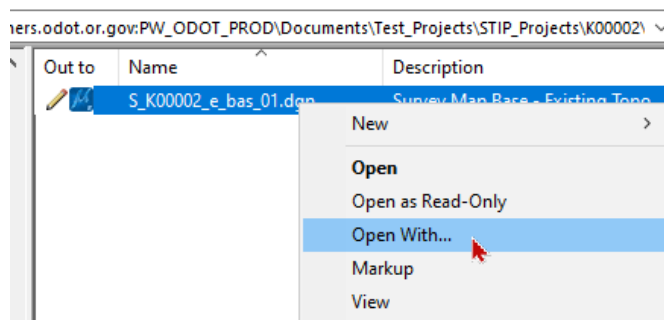
Ensure that the project in ProjectWise is a CONNECT Design Platform and has a 9\_WorkSet folder, or if not, you need to launch in a way that allows you to select the ODOT WorkSet from your C: drive. This document will cover both situations.

### For DGNs in ProjectWise with the Design Platform Attribute of CONNECT

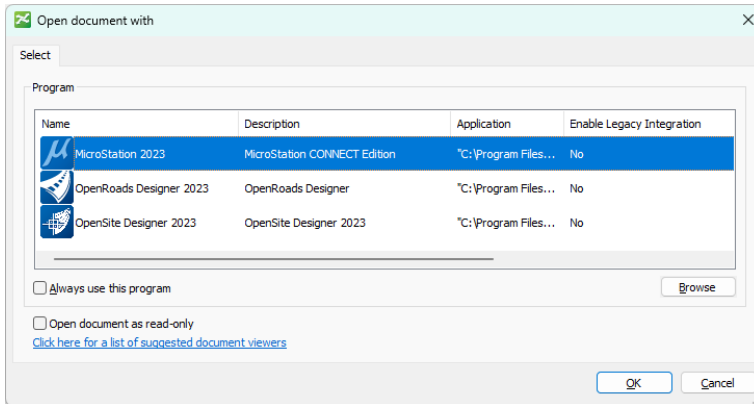
There are two methods for opening DGN files in a CONNECT Design Platform project in ProjectWise. The way to identify a CONNECT project is that the documents will have the Design Platform attribute set to CONNECT and the key number project folder will contain a 9\_WorkSet folder.



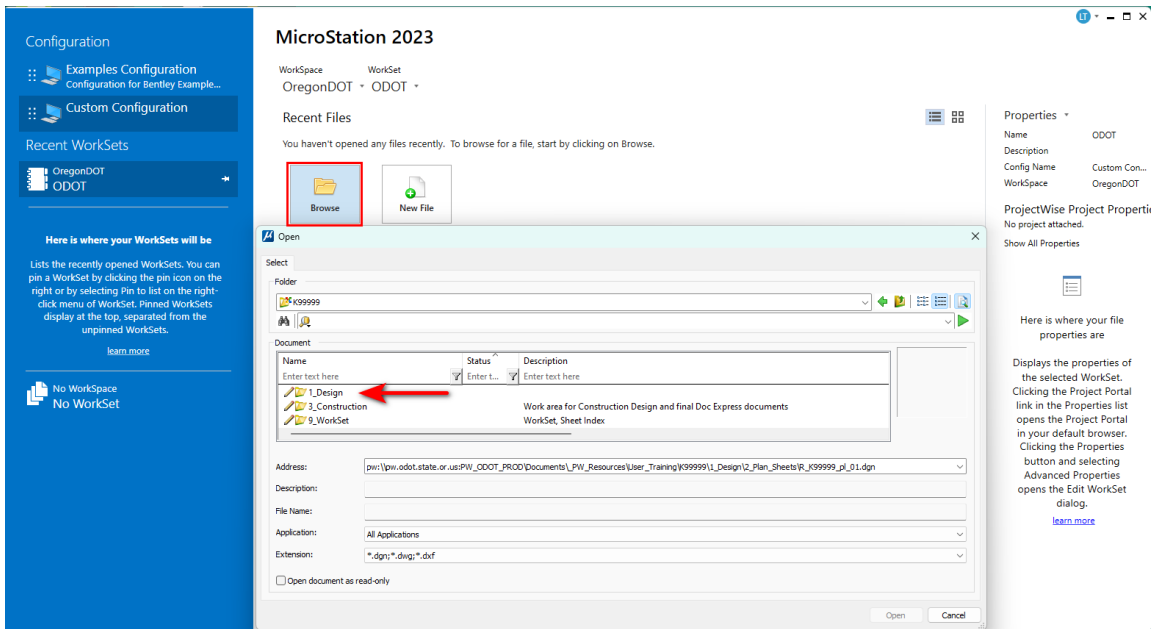
**The preferred method** for opening DGN files with MicroStation or OpenRoads Designer is to first locate the file in the ProjectWise Explorer. Then, right-click on the file and select "Open With..." from the pop up menu.



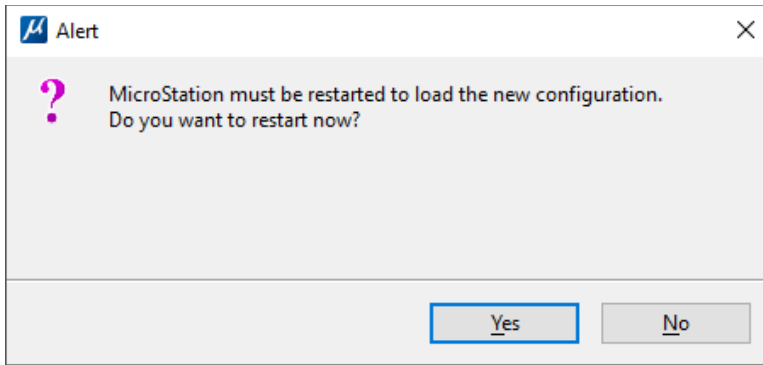
On the **Open document with** dialog, select the appropriate CAD application, then click [OK].



**Another method** to open a DGN file in a CONNECT design platform project in ProjectWise is to use the desktop shortcut for your CAD application, and Login to the ProjectWise datasource.



Then [Browse] to a project that has a 9\_WorkSet folder. Navigate into the 1\_Design folder to locate the DGN data.

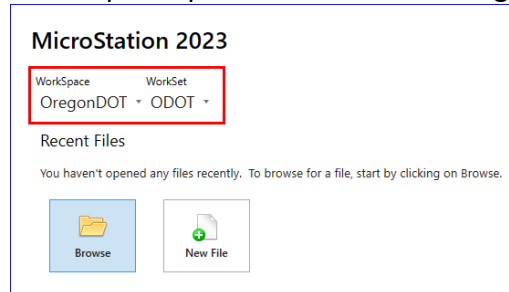


After selecting a DGN file to open, click [Yes] on the Alert box to restart MicroStation or OpenRoads Designer in order to load the WorkSet and WorkSpace from ProjectWise.

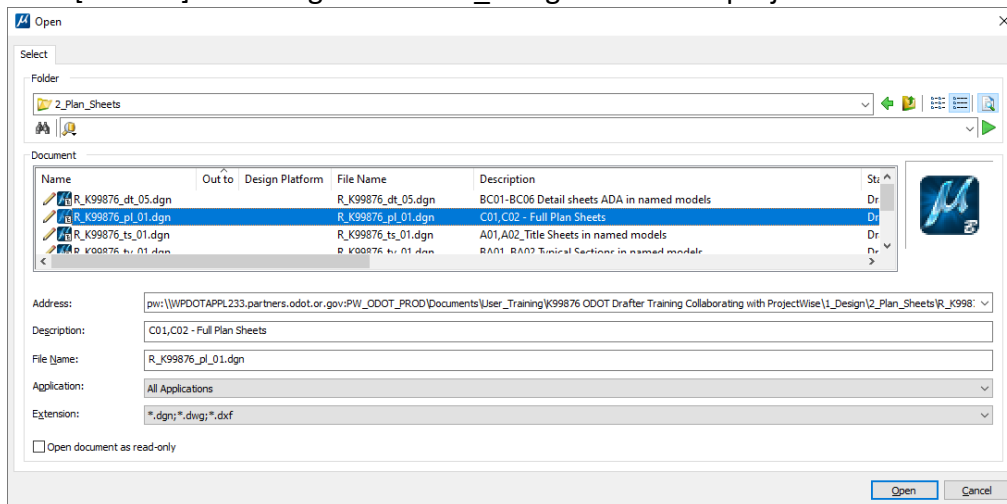
## For DGNs in a non-CONNECT ProjectWise Project (Without the 9\_WorkSet Folder)

When there is no 9\_WorkSet folder in the ProjectWise project, you can still use CAD applications to open DGNs. You will need to tell the software which Workspace and WorkSet to use, though, so you will need to launch from a desktop shortcut. Follow the steps below.

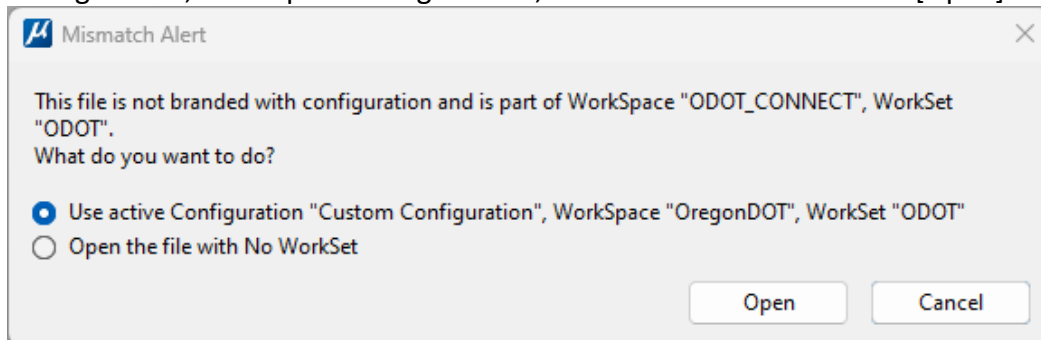
1. Double-click on a desktop shortcut for MicroStation or OpenRoads Designer and select OregonDOT from the WorkSpaces pick list on the Work Page. Select the ODOT WorkSet.



2. Click [Browse] and navigate to the 1\_Design folder of a project to locate the DGN data.



3. [Open] the file.
4. If a Mismatch Alert dialog appears, select "Use active Configuration "Custom Configuration", Workspace "OregonDOT", WorkSet "ODOT"" and click [Open].



*Note: a file opened with No WorkSet will not display ODOT linestyles and will not have access to ODOT cell libraries or design libraries for element templates and levels.*