

Workflow to Migrate MicroStation V8i DGN Graphics to a MicroStation CONNECT DGN

ODOT has upgraded versions of MicroStation from V8i to CONNECT. If you are planning on continuing to work with data that was originally created with V8i, it is recommended that you migrate the graphics to a new file that is created with MicroStation CONNECT.

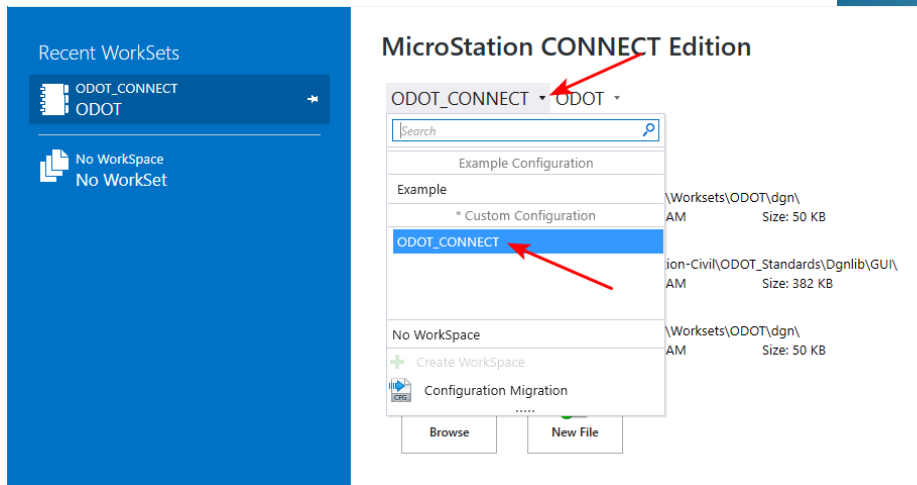
A quick note about Shared Cells – these have always caused issues in the ODOT workspace and are usually placed by accident. Shared cells should not be propagated from V8i DGN data into a CONNECT DGN. If you see shared cells in your data, request assistance from the Engineering Applications Support Team.

To migrate graphics from a DGN file created with V8i to a DGN created with CONNECT:

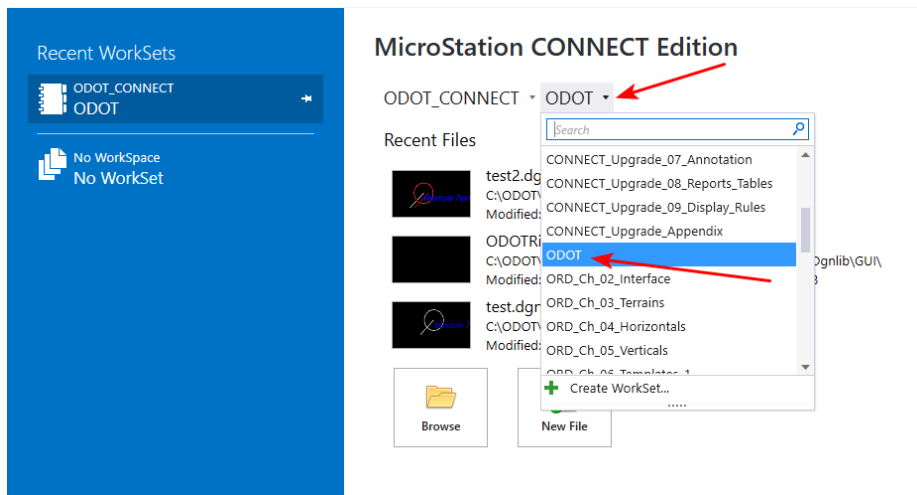
Launch MicroStation CONNECT from your desktop icon.



Select the **ODOT_CONNECT** WorkSpace.



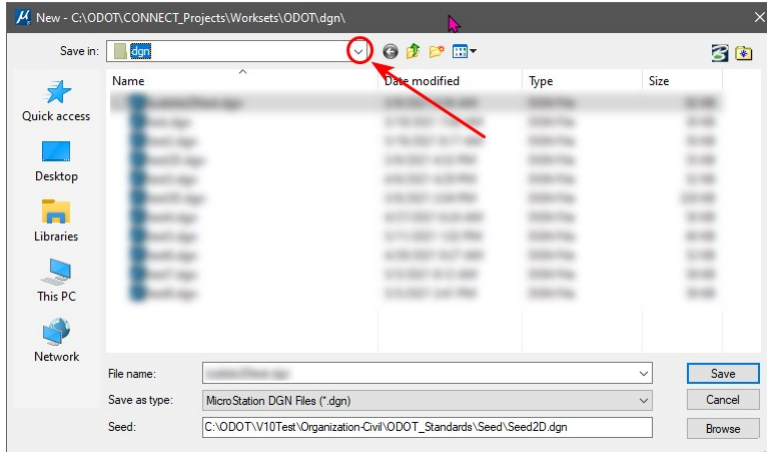
Select the **ODOT** WorkSet.



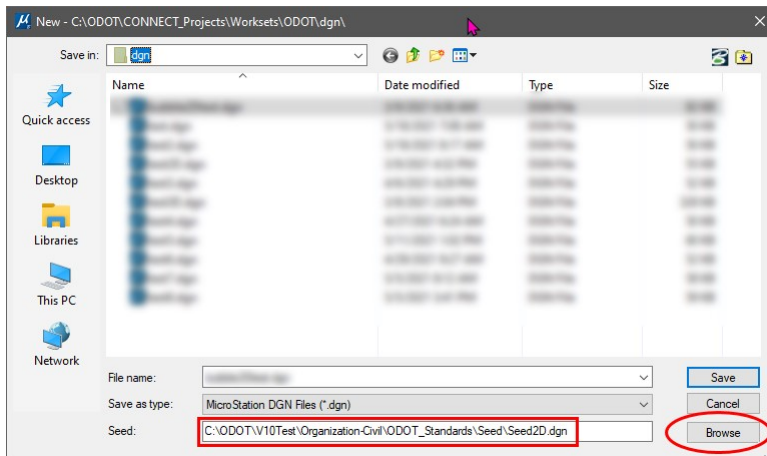
Click on the **[New File]** button.



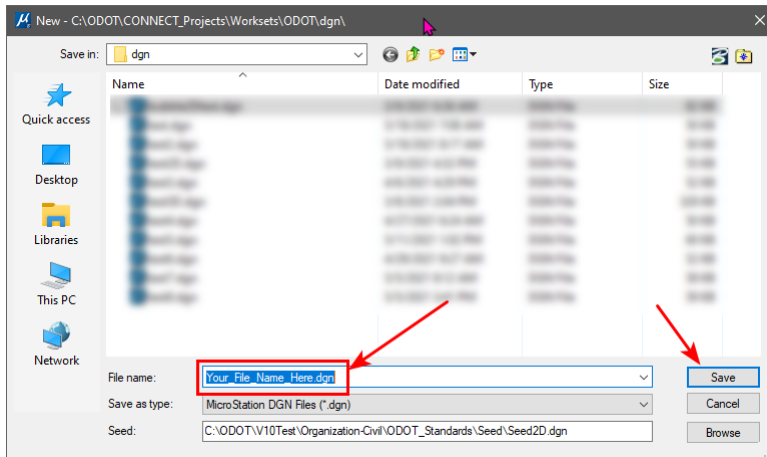
By default, MicroStation will save your new file to the dgn folder in the workset that you selected. You may navigate to any location you wish to store your files, by selecting the drop down to the right of the **Save in:** field and navigating to your preferred location.



The default seed file will be shown in the bottom most field. You will most likely be using Seed2D.dgn. If you need a different seed file, click the **[Browse]** button.

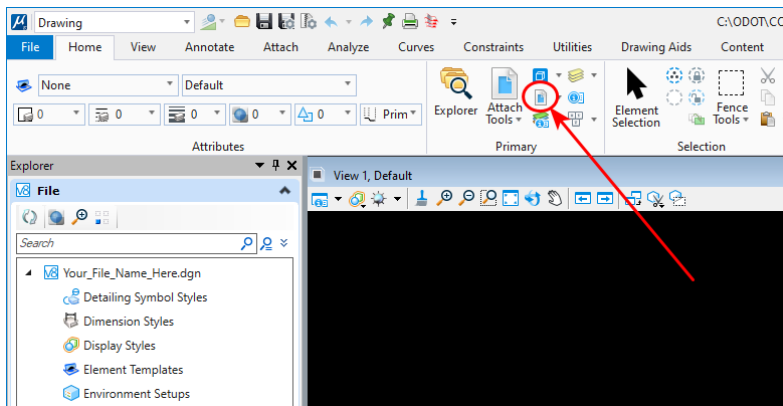


Type the name of your new file into the **File name:** field and select **[Save]**.



Your new file will open in MicroStation CONNECT.

Using the **Drawing** ribbon workflow, and the **Home** ribbon tab, select **Reference** from the **Primary** group.

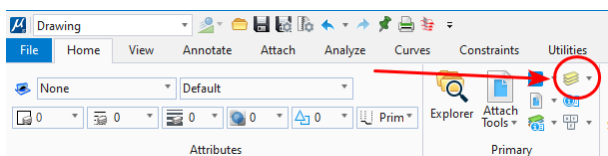


In the **References** dialog, select **Tools>Attach**.

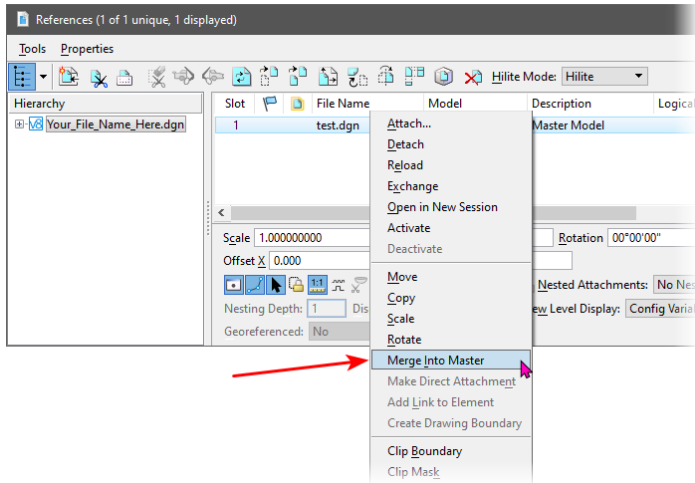
In the **Attach Reference** dialog, navigate to your old V8i file that is to be migrated to CONNECT, and select it. Click **[Open]**. Make sure you select the correct model, then select **[OK]**.

Fit your view so that you can see your reference file in the view window. If your data contains shared cells, request assistance from EAST.

Turn on all the levels using **Level Display** located in the **Primary** group of the **Home** ribbon tab in the **Drawing** ribbon workflow.

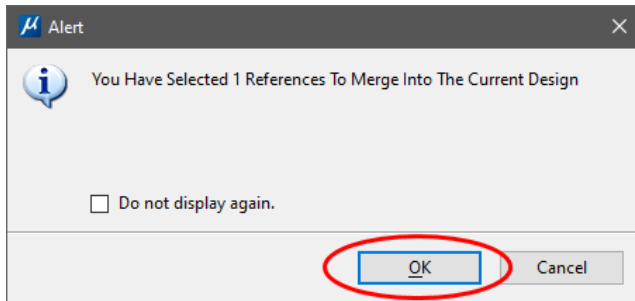


In the **References** dialog you should see one reference file attached. Select the reference with a right click and choose **Merge Into Master**.



In the lower left corner of the application window, you are prompted to select the view window for the merge. Left click in View 1.

You will get a pop up alert that says you have 1 reference selected for the merge. Click **[OK]**.



The **References** dialog will now show no attached references. All the elements that were in the file created with V8i have been copied into the active DGN file that was created with CONNECT.