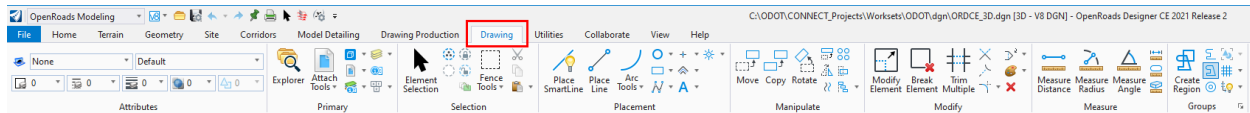


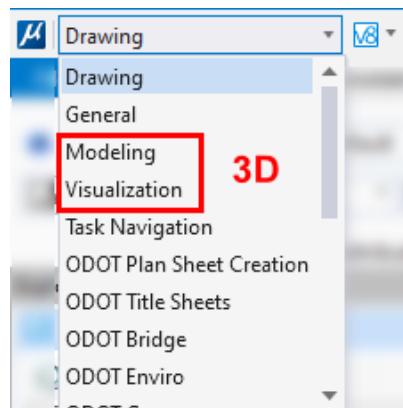
## ODOT Ribbon Workflows in CONNECT

The Bentley ribbon tabs in MicroStation and OpenX software (OpenRoads Designer, OpenSite Designer, OpenBridge Modeler) are styled after Microsoft's ribbon in the Office 365 apps. There are ribbon tabs and on those tabs are ribbon groups that contain buttons that perform functions.

MicroStation is the platform software for all the OpenX CAD products. When using the OpenX software, you will find most of the MicroStation commands on a Drawing tab, so there is little need to change from the Modeling ribbon workflow to execute a MicroStation command.

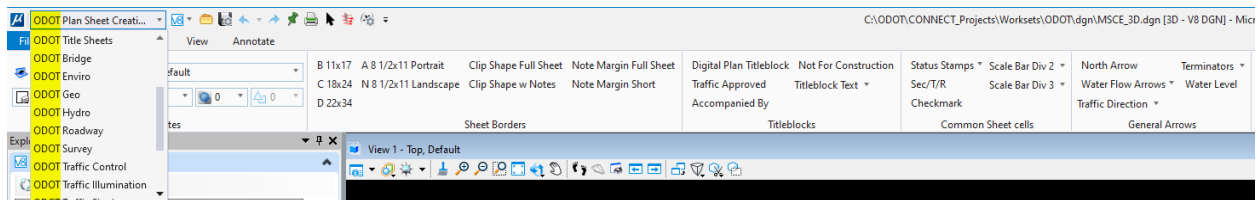


The application and dimensionality of the active model, determine the Ribbon Workflows that are available to be selected from the upper-left pull down list in MicroStation and OpenX CAD software. **Modeling** and **Visualization** only appear when the active model is 3D.



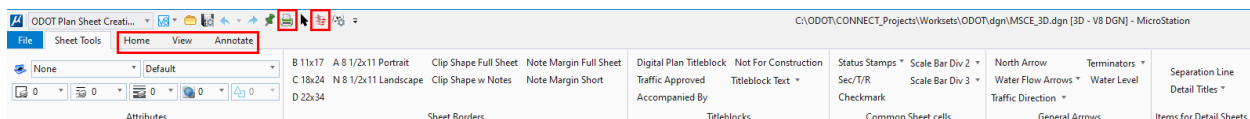
## ODOT Discipline Ribbon Workflows

When you launch MicroStation or OpenX products using the ODOT\_CONNECT WorkSpace and the ODOT WorkSet (or any K##### WorkSet in ProjectWise) there will be **ODOT Discipline** ribbon workflows available for you to access the ODOT standards for cells, custom line styles, element templates, text and dimension styles, and level names.

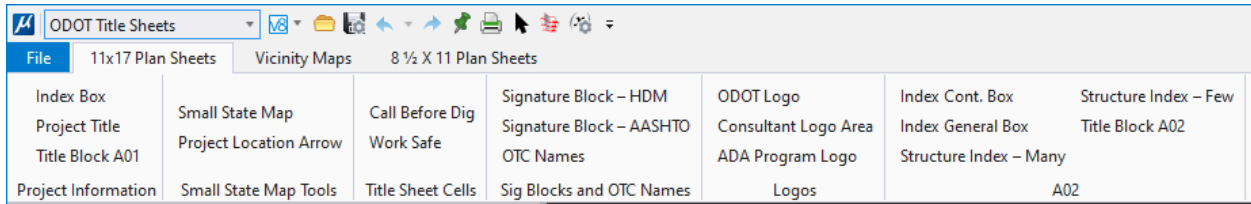


Many of the tools for annotating plan sheets are on the **ODOT Plan Sheet Creation** and **ODOT Title Sheets** ribbon workflows.

The picture below shows the ribbon workflow named **ODOT Plan Sheet Creation** and the tab named "Sheet Tools". The MicroStation Home, View, and Annotate tabs (outlined by a red rectangle) are also displayed in ODOT Plan Sheet Creation to reduce the need for changing the ribbon workflow. The Quick Access Toolbar at the top has printing icons that are outlined with red squares.

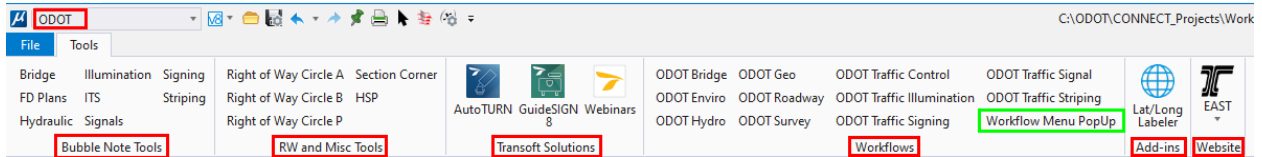


The picture below shows the ribbon workflow named **ODOT Title Sheets** with tabs named “**11x17 Plan Sheets**”, “**Vicinity Maps**” and “**8½ X 11 Plan Sheets**”, containing tools for creating plan set title sheets.



## The ODOT ribbon workflow

The **ODOT** ribbon workflow provides all the discipline bubble note tools in one place, as well as custom ODOT Tools, software add-ins, shortcuts to discipline Ribbon Workflows, and Website links to the Engineering Applications Support Team.



The [**Workflow Menu PopUp**] button in the Workflows group (green rectangle above), allows for a larger and more centralized target for selecting any ribbon workflow. This is a button/tool that different disciplines may adopt to place on the ODOT discipline ribbon workflows for easier navigation. Left-clicking on [**Workflow Menu PopUp**] causes a contextual menu to appear which shows the entire list of ribbon workflows.

