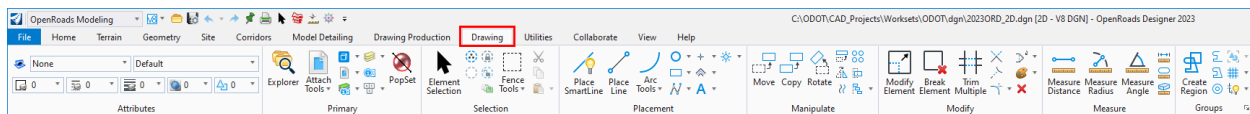


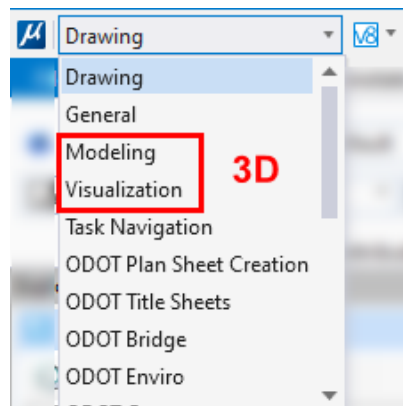
ODOT Ribbon Workflows

The Bentley ribbon tabs in MicroStation and OpenX software (OpenRoads Designer, OpenSite Designer, OpenBridge Modeler) are styled after Microsoft's ribbon in the Office 365 apps. There are ribbon tabs, and on those tabs are ribbon groups that contain buttons that perform functions.

MicroStation is the platform software for all the OpenX CAD products. When using the OpenX software, you will find most of the MicroStation commands on a Drawing tab, so there is little need to change from the Modeling ribbon workflow to execute a MicroStation command.

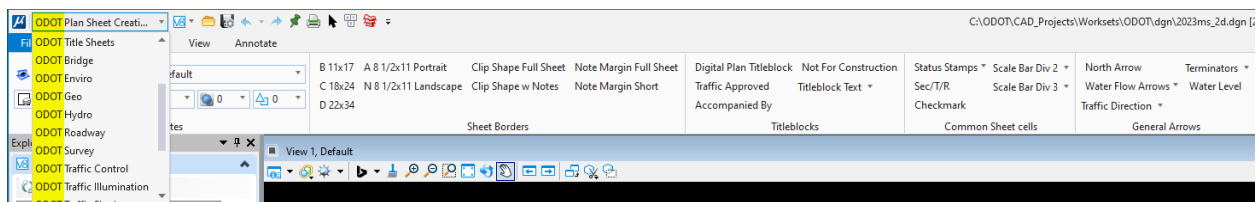


The application and dimensionality of the active model determine the Ribbon Workflows that are available to be selected from the upper-left pull-down list in MicroStation and OpenX CAD software. **Modeling** and **Visualization** only appear when the active model is 3D.



ODOT Discipline Ribbon Workflows

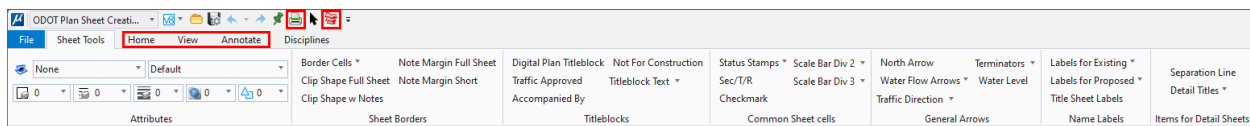
When you launch MicroStation or OpenX products using the OregonDOT Workspace and the ODOT WorkSet (or any K##### WorkSet in ProjectWise) there will be **ODOT Discipline** ribbon workflows available for you to access the ODOT standards for cells, custom line styles, element templates, text and dimension styles, and level names.



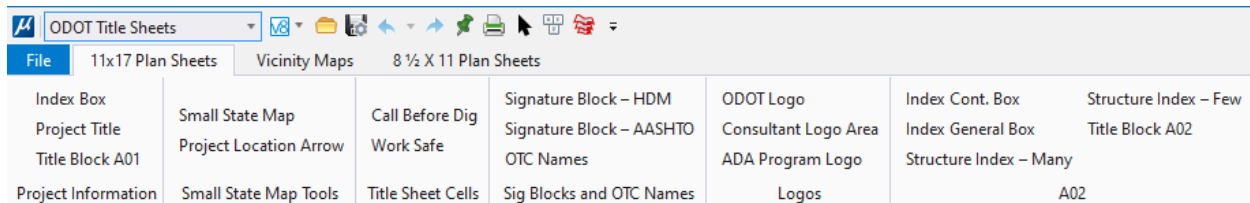
Many of the tools for annotating plan sheets are on the **ODOT Plan Sheet Creation** and **ODOT Title Sheets** ribbon workflows.

The picture below shows the ribbon workflow named **ODOT Plan Sheet Creation** and the tab named **"Sheet Tools"**. The MicroStation Home, View, and Annotate tabs (outlined by a red rectangle) are also displayed on almost all ODOT discipline ribbon workflows to reduce the need for changing the ribbon workflow. The Quick Access Toolbar at the top has printing icons that are outlined with red squares.

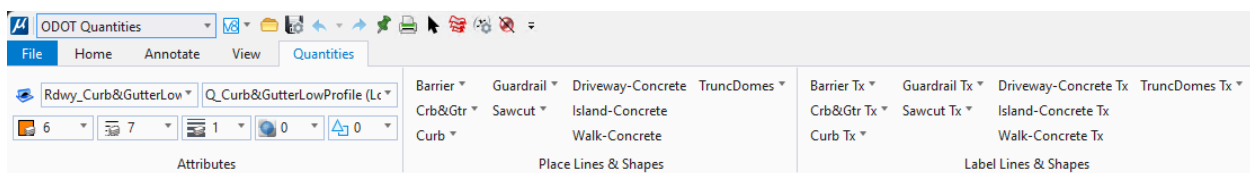
A **Disciplines** tab also appears on **ODOT Plan Sheet Creation**. It contains shortcuts to every ODOT discipline ribbon workflow.



The picture below shows the ribbon workflow named **ODOT Title Sheets** with tabs named “**11x17 Plan Sheets**”, “**Vicinity Maps**” and “**8½ X 11 Plan Sheets**”, containing tools for creating plan set title sheets.

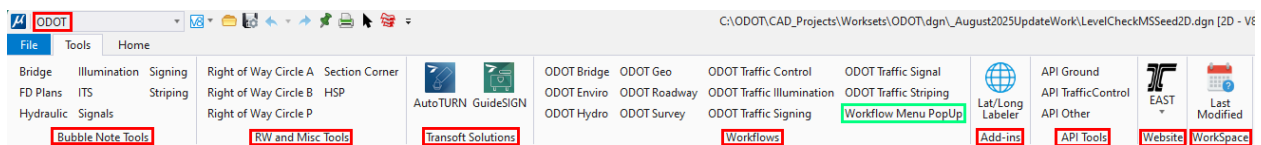


The **ODOT Quantities** ribbon workflow, shown below, provides commands on a **Quantities** tab for placing lines and shapes using the “Q_” levels, as well as a group for labeling the length or area using text favorites.



The ODOT Ribbon Workflow

The **ODOT** ribbon workflow provides all the discipline bubble note tools in one place, as well as custom ODOT Tools, software add-ins, shortcuts to discipline Ribbon Workflows, Website links to the Engineering Applications Support Team, and a tool to display in the status bar when your local Workspace was last modified.



The [**Workflow Menu PopUp**] button in the Workflows group (green rectangle above), allows for a larger and more centralized target for selecting any ribbon workflow. This is a button/tool that different disciplines may adopt to place on the ODOT discipline ribbon workflows for easier navigation. Left clicking on [**Workflow Menu PopUp**] causes a contextual menu to appear which shows the entire list of ribbon workflows.

ODOT Bridge

ODOT Enviro

ODOT Hydro

ODOT Geo

ODOT Roadway

ODOT Survey

ODOT Traffic Control


ODOT Traffic Illumination

ODOT Traffic Signing

ODOT Traffic Signal

ODOT Traffic Striping

Workflow Menu PopUp




Lat/Long
Labeler

API Grc

API Tral

API Oth

Workflows



1 Geospatial Context

2 Drawing

3 General

4 Task Navigation

5 ODOT Plan Sheet Creation

6 ODOT Title Sheets

7 ODOT Bridge

8 ODOT Enviro

9 ODOT Geo

0 ODOT Hydro

Q ODOT Survey

W ODOT Roadway

E ODOT Traffic Control

R ODOT Traffic Illumination

T ODOT Traffic Signing

Y ODOT Traffic Striping

U ODOT Traffic Signal

I ODOT Welding Symbols

O ODOT