

PROJECTWISE AND CAD TIPS



TOPICS

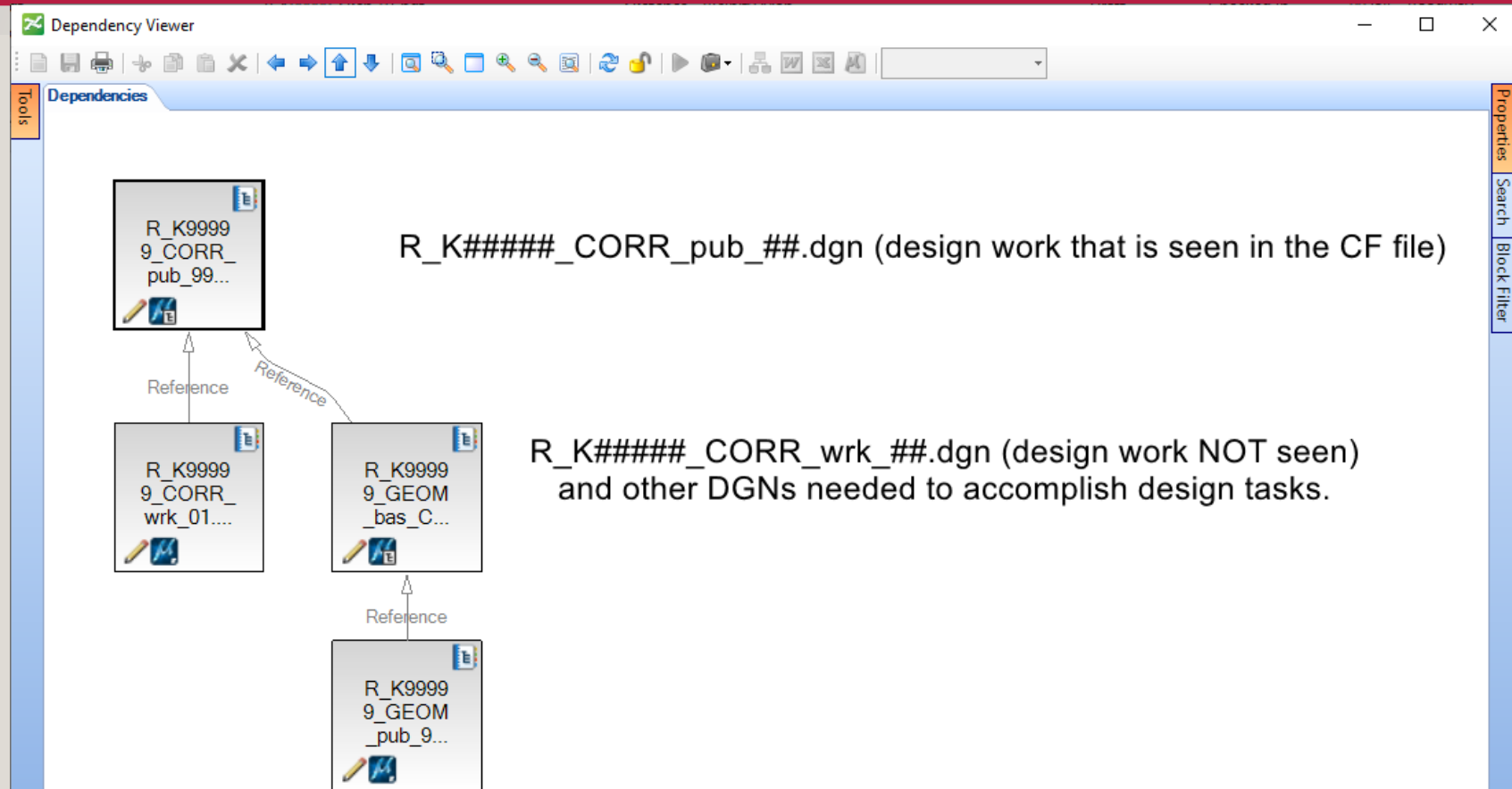
- **Working with Civil DGN data in ProjectWise**
- **Configure the Advanced Wizard**
- **Creating New Files and the Name Lock**
- **The 9_WorkSet Folder**
- **Gray Shading Existing Elements in PDFs**

WORKING WITH CIVIL DGN DATA IN PROJECTWISE

- ODOT is using Container Files – reference attachments to published civil data stored in discipline folders
- ORD Container Files & ORD Design Deliverables require the use of Live Nesting – the OpenRoads Designer training used these concepts – refer to your manual.
- Copying, Replacing or Moving DGN files that contain civil data can break the data – this is the reason that the published files concept was adopted.
- Using Container Files allows others to have a window to see the data as it is dynamically being worked on by survey or design.

New Survey names for published files were added in October 2022. New Roadway names for published files were added in November 2022.

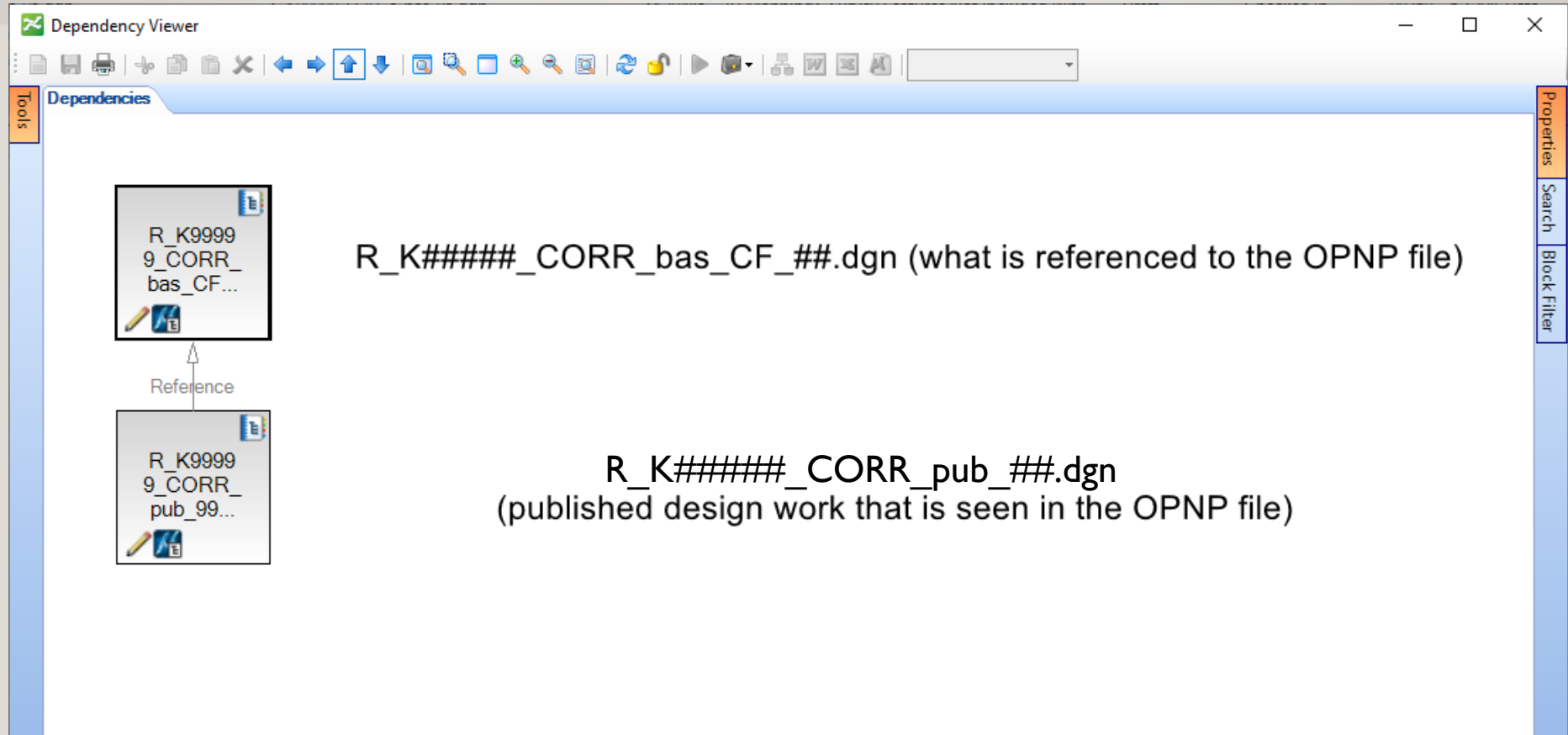
Container File Reference Hierarchy ROADWAY Folder



The container file reference hierarchy allows the designer to attach other files as references to their "published" design that is not seen by downstream users.

Container File Reference Hierarchy

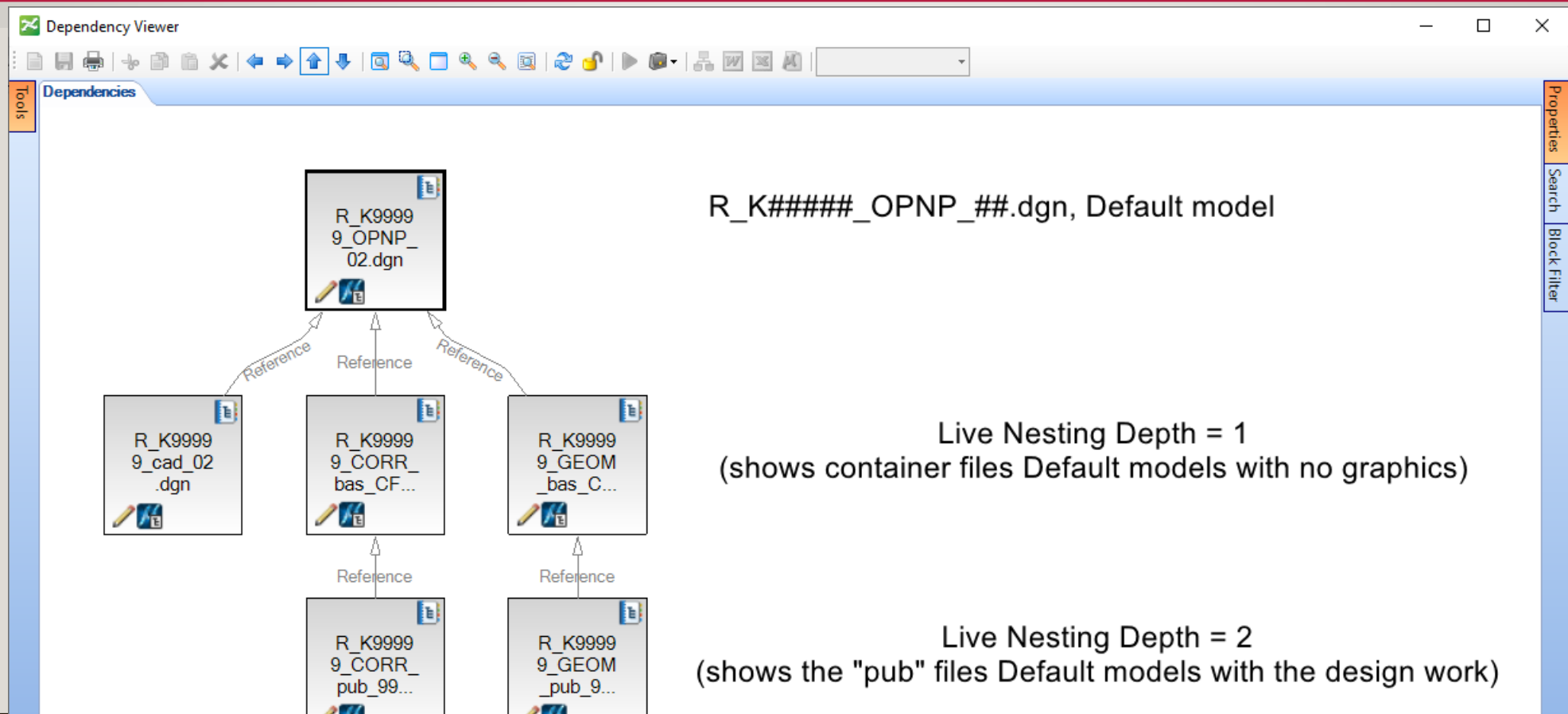
6_Civil_Data Folder



When downstream users attach a Container File as a reference - they should use Live Nesting, depth = 1 (designers in other disciplines, creators of design deliverables like the OPNP and XSEC_bas)

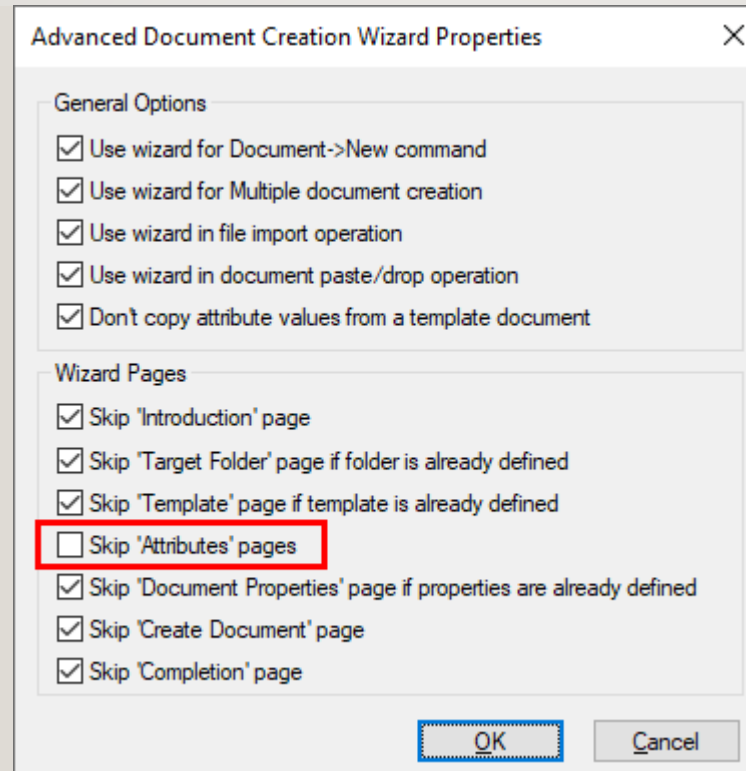
Container File Reference Hierarchy

2_Plan_Sheets Folder



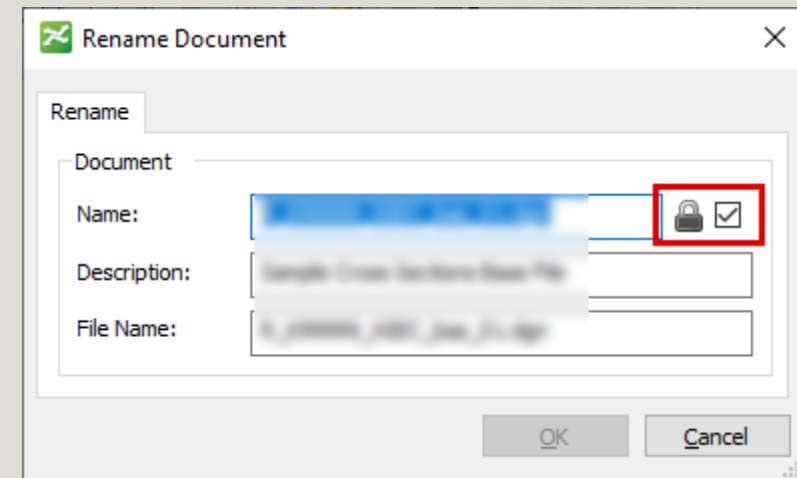
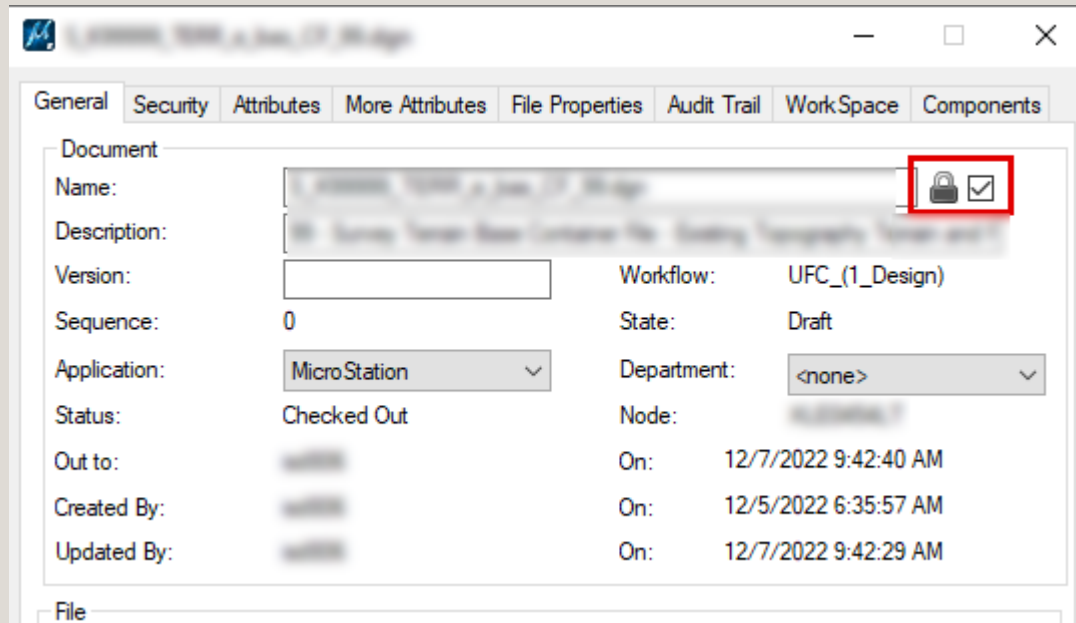
When CAD Technicians attach the default model of the OPNP file as a reference - they should use Live Nesting, depth = 2 to see the published design work. If the nesting depth is too deep - they may see things that mess up their work.

Configure the Advanced Wizard for Speed



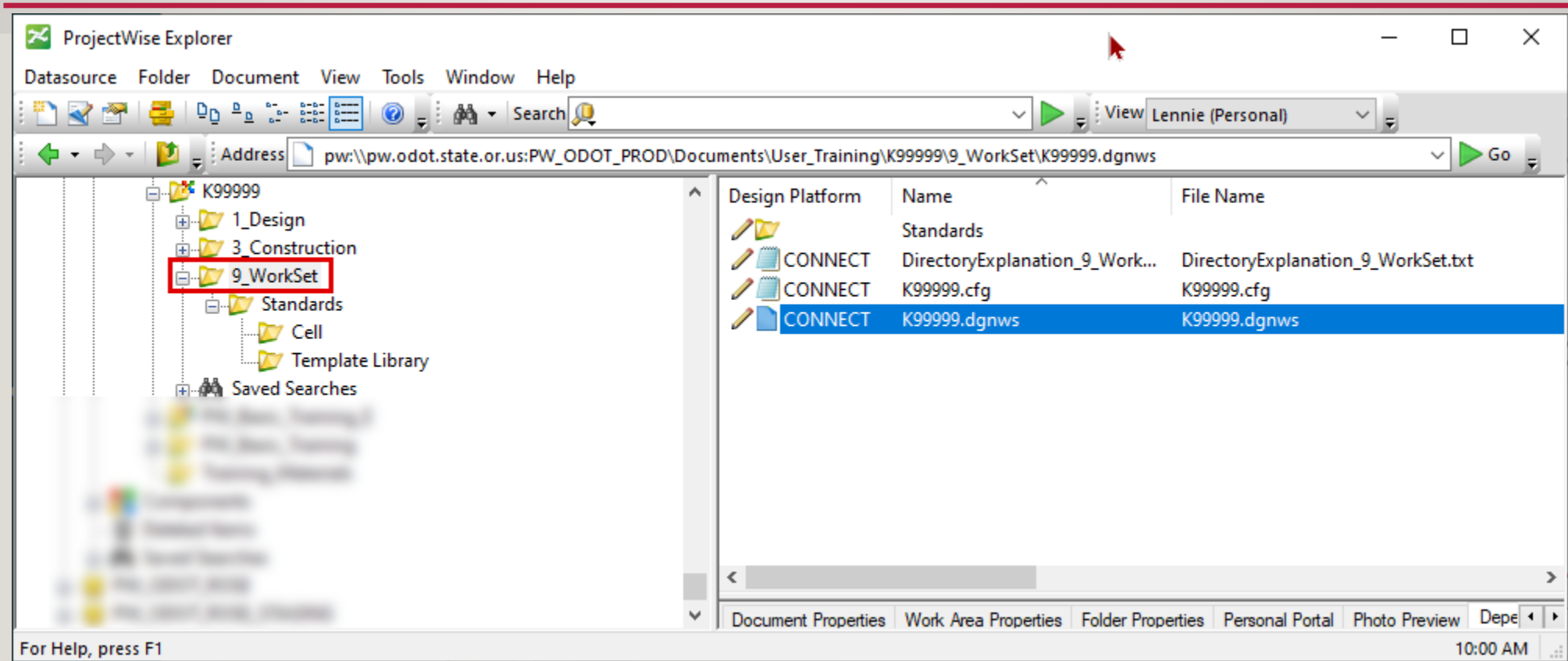
Tools>Wizard Manager... Advanced Wizard | Properties - check all "Skip" Wizard Pages EXCEPT FOR 'Attributes' pages

ProjectWise Name Lock



The Name Lock appears in two places: Properties | General and Rename Document. It's the same lock and should always be checked on.

9_WorkSet Folder



9_WorkSet provides the ODOT WorkSet to projects in ProjectWise. The CAD products create a K#####.dgnws (workset and sheet index) file automatically and access it automatically. ODOT is not using the Sheet Index and you should check this file in when prompted.

Gray Shading Existing Elements in Plan Sheets

References (3 of 4 unique, 2 displayed)

Tools Properties

Hierarchy

Slot	File Name	Model	Description	Logical	Orientatio
1	PW_WORKDIR:dms99264\S_K99999_TERR_e_pub_99.dgn	Default	Master Model	Existing	Coincider
2	✓ S_K99999_TERR_e_bas_CF_99.dgn	Default-3D		Ref	Coincider

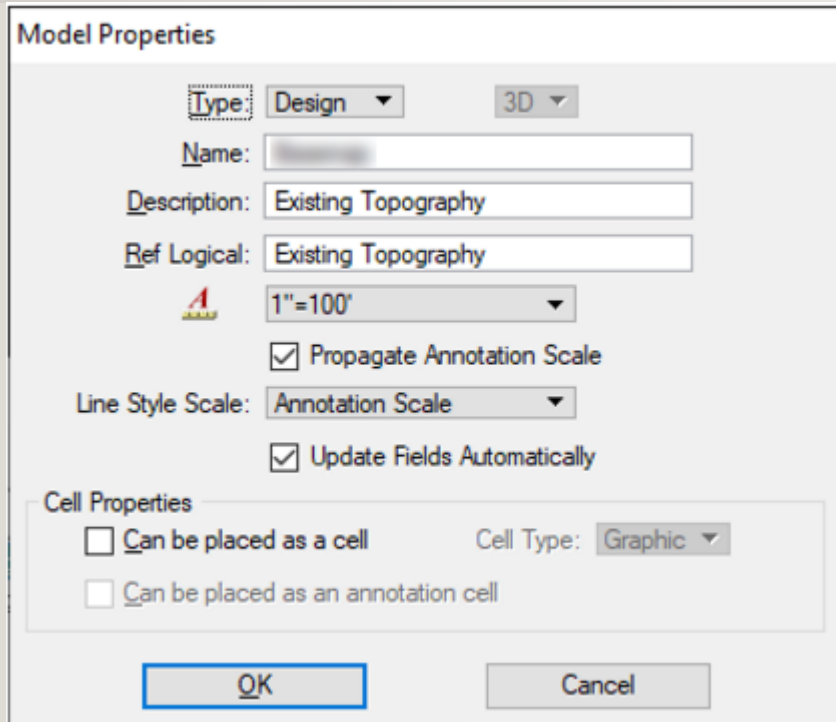
Scale 1.000000000 : 1.000000000 Rotation 00°00'00" Offset X 0.000 Y 0.000

Nested Attachments: No Nesting Nesting Depth: 1 Display Overrides: Alwa

New Level Display: Config Variable Georeferenced: No

The logical name must be set on the reference attachment to the model that contains the existing topography. Typically, this will be set by the Surveyor in their TERR_e_bas Container File.

Gray Shading Existing Elements in Plan Sheets




Model Properties

Type: Design 3D

Name:

Description: Existing Topography

Ref Logical: Existing Topography

 1"=100'

Propagate Annotation Scale

Line Style Scale: Annotation Scale

Update Fields Automatically

Cell Properties

Can be placed as a cell Cell Type: Graphic

Can be placed as an annotation cell

OK Cancel

- Elements to be screened should be attached to the sheet as a reference that uses a logical name that includes the word exist.
- This could be elements in a different file, a different model, or could be a self-reference with specific levels turn on/off.
- Setup can be made easier by placing a logical name seed in the model containing the basemap graphics.

Elements are screened during printing by print styles that use either the plans.tbl or plans_CurbRampDetails.tbl pen table.

DEMO

- Configure Advanced Wizard for speed
- Create a DGN, Roadway Notes Spreadsheet, and a complete project PSET
- Show 9_WorkSet and .dgnws file and how it is created
- Gray shade existing elements in a plan sheet