

Working with Google Earth (.KMZ) Files in ProjectWise

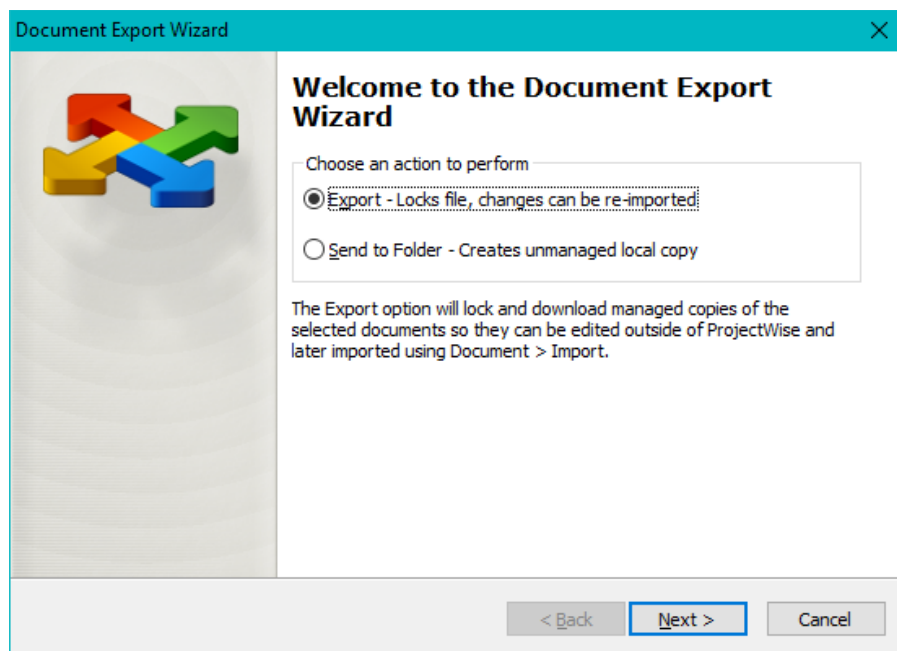
While the Google Earth application is recognized by ProjectWise, the Google Earth application is not truly integrated with ProjectWise. In addition, the way that Google Earth makes a temporary cache of your "Temporary Places", can interfere with the ability to launch Google Earth and open .KMZ files stored in ProjectWise.

You may open a .KMZ document stored in ProjectWise and find that it is not checked out. If you make changes to your "Temporary Places" and wish to update your .KMZ file - you will have trouble with that, because of the way that Google Earth operates. The workaround has two major steps - the first to get around ProjectWise non-integration, and the second to use Google Earth to edit the .KMZ and overwrite the original.

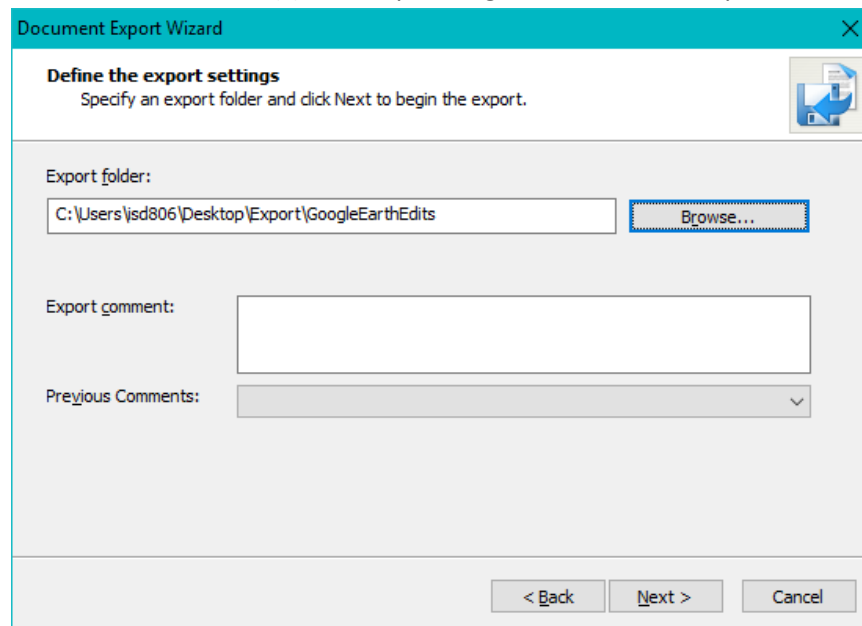
Note - saving to "My Places" does not write to a .KMZ file. Saving "My Places" writes to a .KML file that is stored in your profile on your computer.

How to open and edit .KMZ files stored in ProjectWise

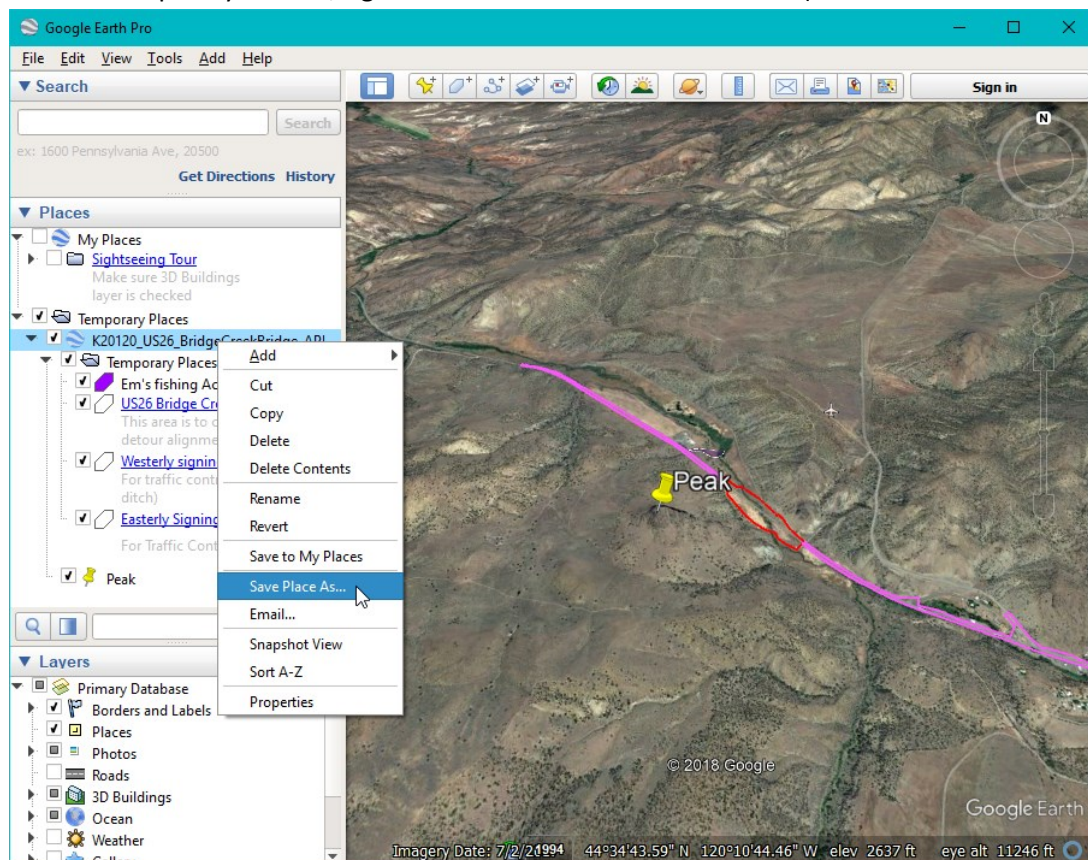
1. In **ProjectWise** - use right-click **Export...** and choose "**Export - Locks file, changes can be re-imported**".



2. Create a folder to hold the .KMZ file(s) and step through the Document Export Wizard.

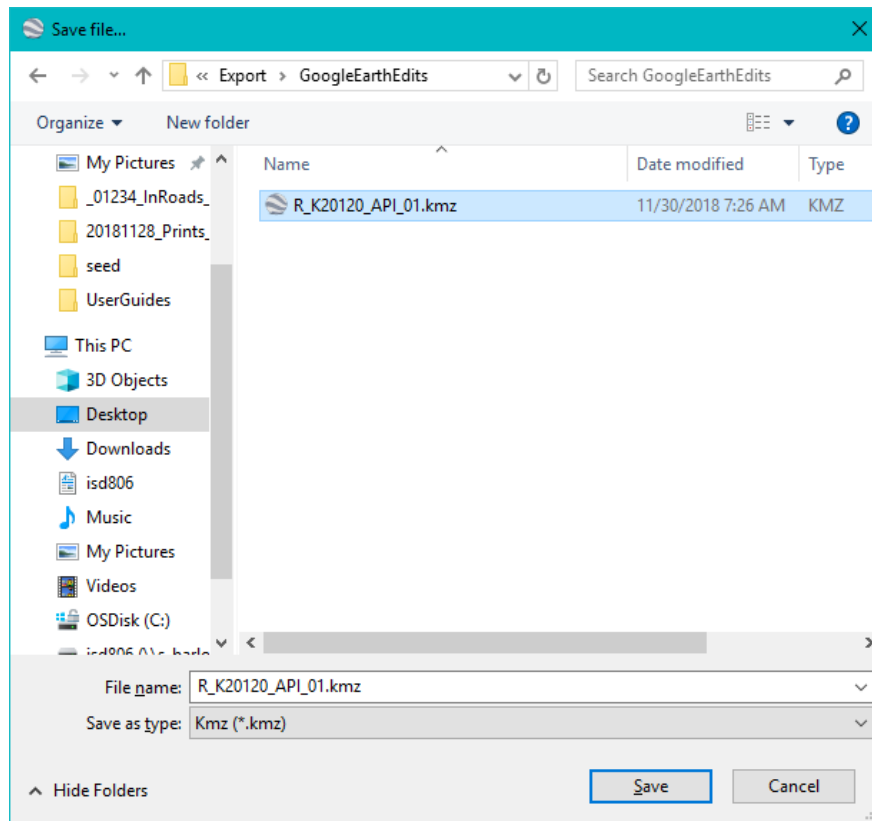


3. Open the exported .KMZ in **Google Earth** and make your edits. When finished, select the top-most level of the "Temporary Places", right-click and choose **Save Place As...** (File>Save>Save Place As...).

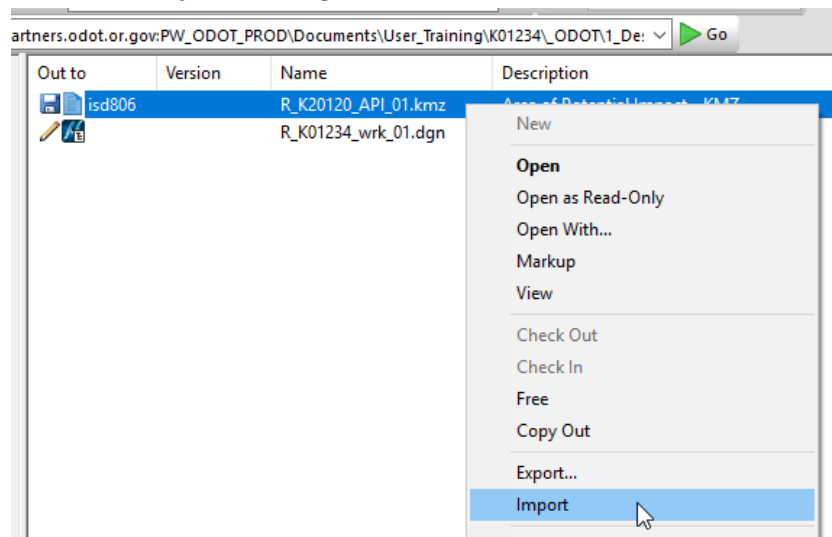


In the picture above I have added a placemark named Peak - you can see it in the hierarchy on the left side beneath the loaded .KMZ.

4. In the **Save file...** dialog - navigate to the folder you created for your Google Earth edits and **OVERWRITE** the .KMZ file that you loaded. Answer [Yes] to the "Confirm Save As" dialog.



5. Now you can go back into **ProjectWise**, right-click on the .KMZ document and choose **Import....**



6. During Check In - enter a comment about the changes that you made; comments are visible in the audit trail.
