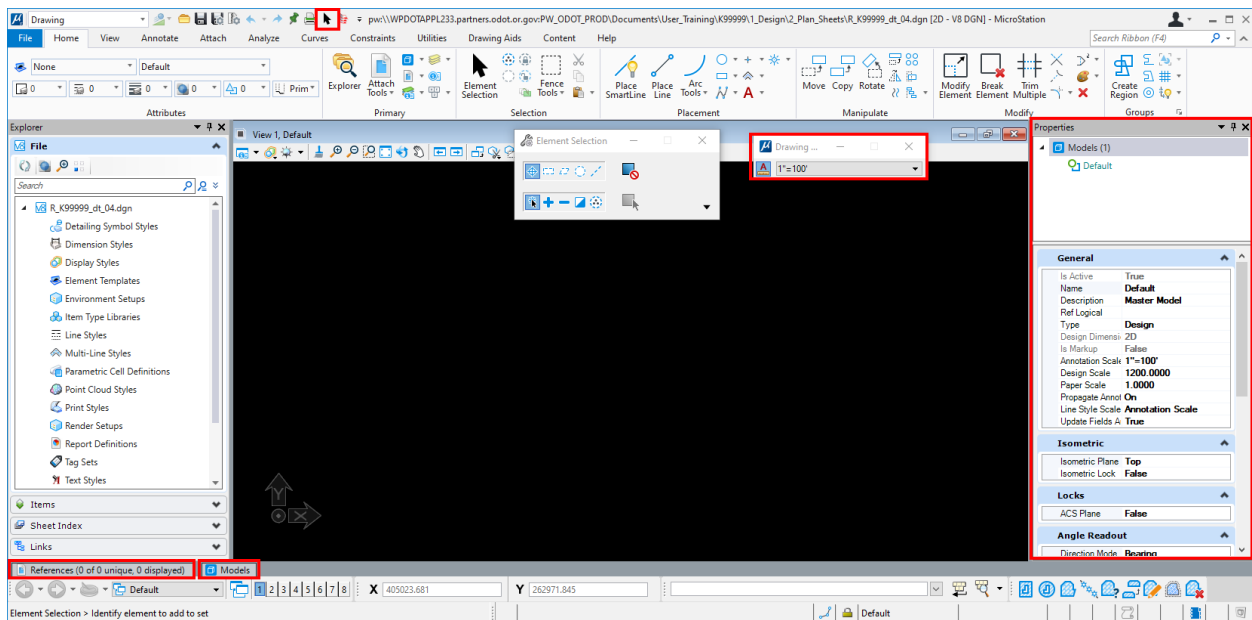


Tips for CONNECT Tools

These tips were assembled because some tools that you may wish to use frequently might require you to change ribbon workflows to access. A couple of the tips involve tools that cannot be found using the CONNECT search box and it may save you time to display the tools as a toolbox.

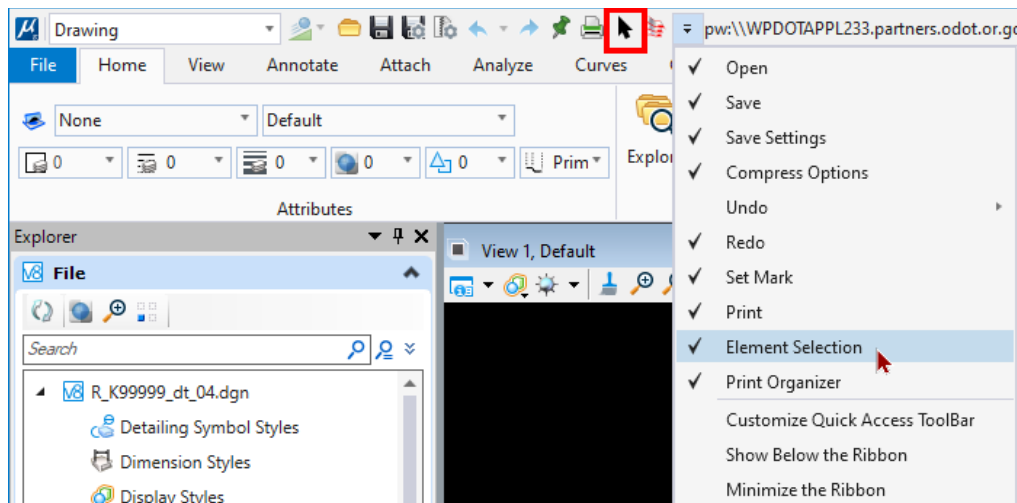
In the picture below, red rectangles outline five additional tools displayed:

- Element Selection on the Quick Access toolbar,
- open Properties dialog at the right,
- open, floating Drawing Scale dialog at the top of the view window,
- open, docked at the bottom and unpinned References dialog at the bottom,
- open, docked at the bottom and unpinned Models dialog also at the bottom.



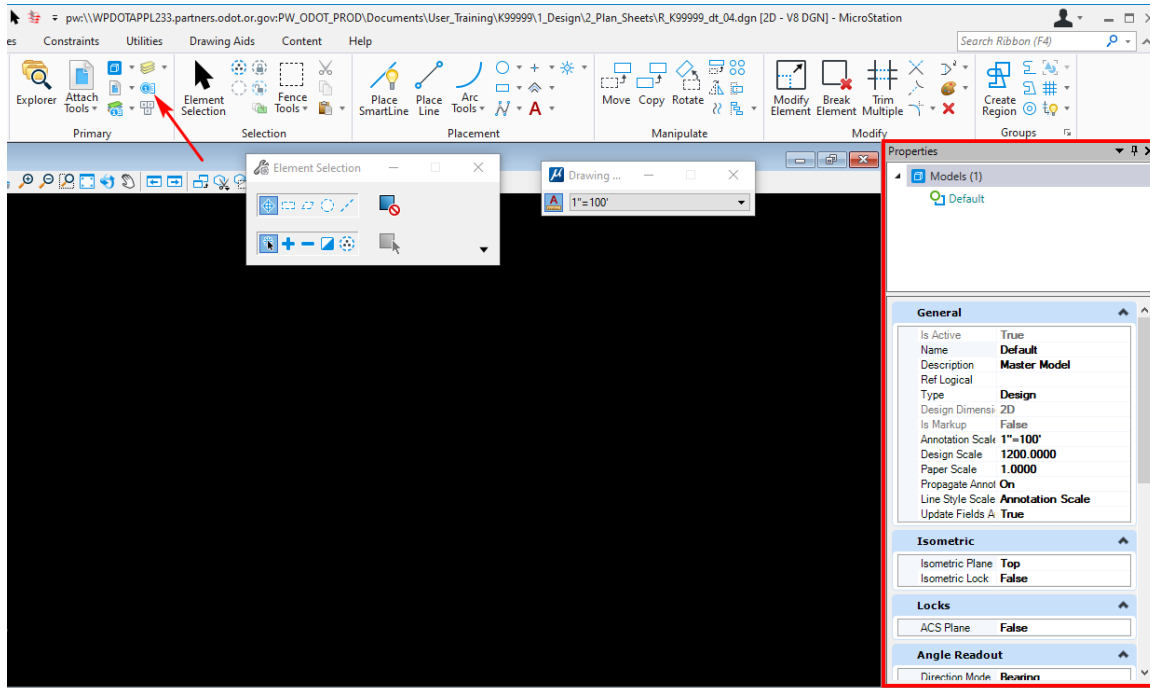
Element Selection tool on the Quick Access Toolbar

Add the **Element Selection** tool to the Quick Access Toolbar by selecting the “Customize Quick Access Toolbar” icon and selecting “Element Selection” on the pop down menu.



Properties Dialog

The **Properties** dialog will open in its default docked and pinned position at the right, when the Properties icon is selected from the Primary group on the Home ribbon tab of the Drawing ribbon workflow. It is handy to have the Properties dialog open to display the properties of whatever is selected: a graphical element, a model, a reference attachment ...

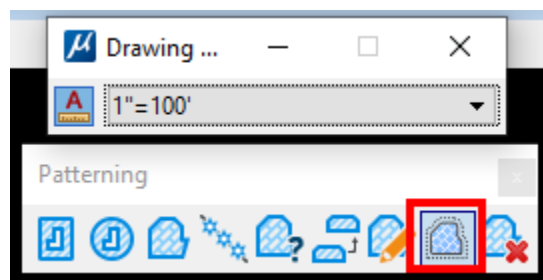


Drawing Scale toolbox and Patterning toolbox

One benefit of displaying the Drawing Scale as a toolbox is that the Drawing Scale tool will appear in the application, no matter what data is open and no matter which ribbon workflow is active. The primary reason for opening the Patterning toolbox is because the command for “Drop Associative Pattern” is not found anywhere else!

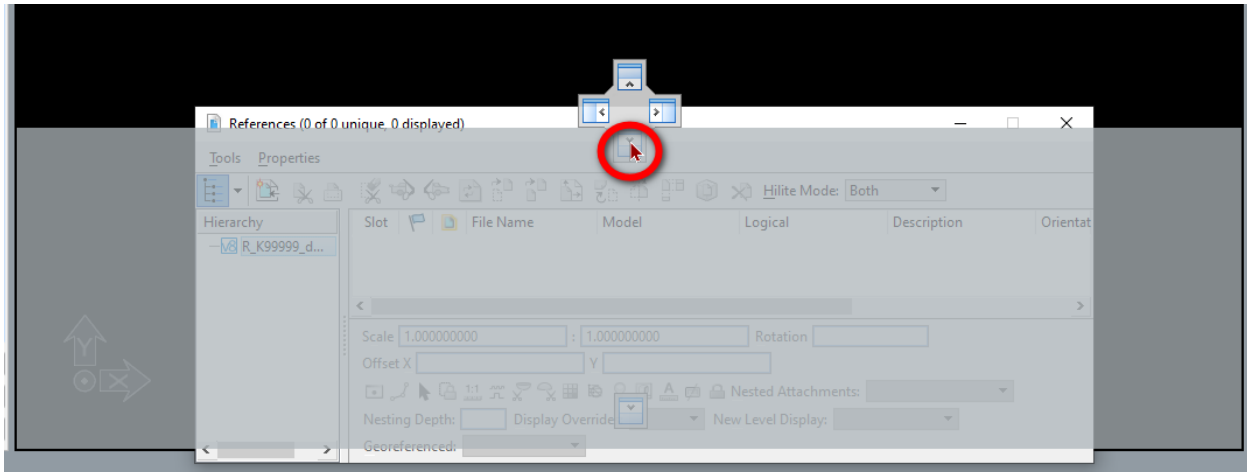
Use the Back stage under the **File** menu, and navigate to Settings>User>Toolboxes. Scroll down and place a check mark next to “Drawing Scale” and “Patterning”.

Warning! The “Drawing Scale” toolbox is difficult to move in its default medium size. Right-click anywhere in the gray area (not the white title bar), even right-click on a button – and select **Dialog Size>Large** – now you can move the “Drawing Scale” dialog box by dragging the title bar. Take the time to right-click several more times and uncheck all tools except “Drawing Scale”.

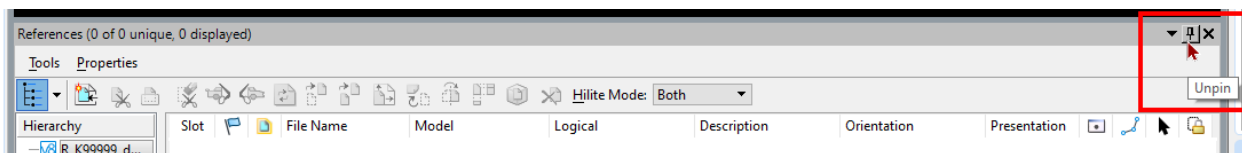


Reference and Models dialogs

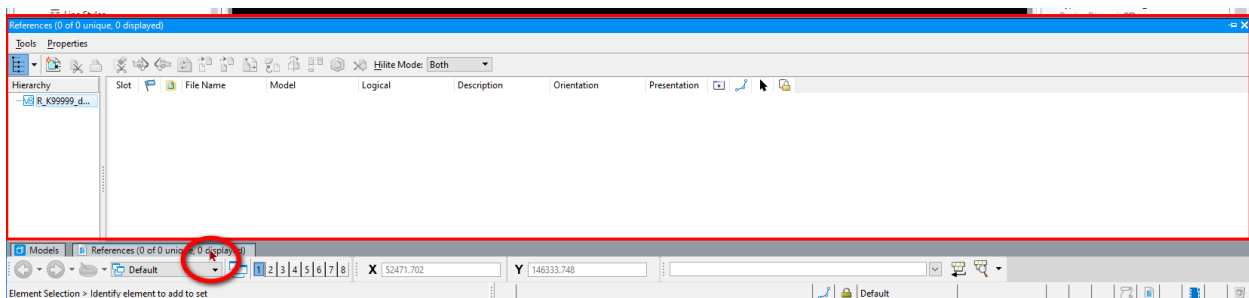
After opening the dialogs, move them and use the bottom docking icon from the group at the center of the screen.



Once the dialog is docked – select the pushpin icon in the upper right corner to unpin the dialog.



The docked and unpinned dialogs appear as tabs along the bottom of the MicroStation application and they will pop open when your mouse hovers over a tab.



When multiple dialogs are docked in the same location and unpinned, you see a tab for each docked and unpinned dialog.