



## Right of Way Engineering Updates

- We have found a couple of issues with the A and B map cells.
- We have noticed a lot of maps with no revision notes?
- Workflow update for “True Type” font.
- Project Wise discussion.

**Mike Fallert, PLS**  
Rotation/Development Right of Way Surveyor  
Engineering Automation Section  
Geometronics Unit

**March, 2017**



# Oregon Department of Transportation

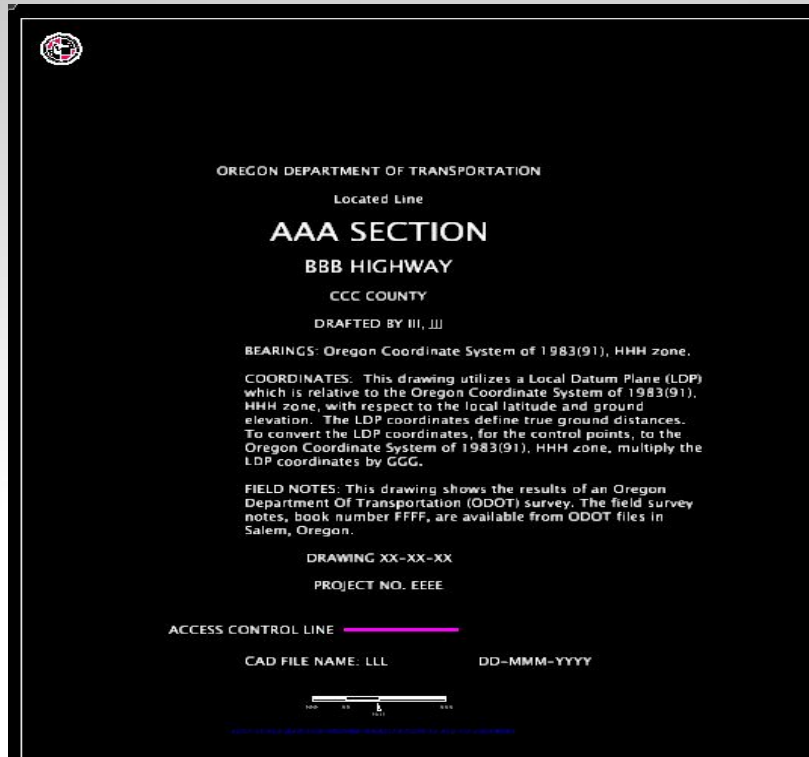


RW  
Engineering

We have found that we did not get the “CAD File Name LLL” the old “Find and replace,” replaced with the “This File Name Location ##” Auto file populate data field in the new seed cells. This helps us locate the dgn that the PDF map was made from and the date that it was made. We have updated the seed file and it will be available when the next workspace update happens. Until then and also on any older dgn’s you are working on can you replace the text with the following? Exactly!

THIS IS THE FILE NAME LOCATION #####  
DD-MMM-YYYY

I will include a word document with the Email that you can cut and paste.





# Oregon Department of Transportation



RW  
Engineering

## Example:



OREGON DEPARTMENT OF TRANSPORTATION

Located Line

### AAA SECTION

BBB HIGHWAY

CCC COUNTY

DRAFTED BY III, Date?

BEARINGS: Oregon Coordinate System of 1983(91), HHH zone.

COORDINATES: This drawing utilizes a Local Datum Plane (LDP) which is relative to the Oregon Coordinate System of 1983(91), HHH zone, with respect to the local latitude and ground elevation. The LDP coordinates define true ground distances. To convert the LDP coordinates, for the control points, to the Oregon Coordinate System of 1983(91), HHH zone, multiply the LDP coordinates by GGG.

FIELD NOTES: This drawing shows the results of an Oregon Department Of Transportation (ODOT) survey. The field survey notes, book number FFFF, are available from ODOT files in Salem, Oregon.

DRAWING <MAP NAME>

PROJECT NO. EEEE

ACCESS CONTROL LINE \_\_\_\_\_

THIS IS THE FILE NAME LOCATION \*\*\*\*\*

DD-MMM-YYYY



EDIT SCALE BAR FOR PROPER ANNOTATION SCALE OF DRAWINGS

REVISION HISTORY		
DATE	NAME	DESCRIPTION
MM/DD/YYYY	PLACE NAME HERE	DESCRIPTION OF REVISION

PLACE STATUS STAMP HERE

SEE COUNTY SURVEY ### FOR HORIZONTAL CONTROL AND RECOVERY SURVEY

INSERT	BASE OF BEARING	NO SCALE
BASE BEARING N. 0°00'00" E.		



# Oregon Department of Transportation



**RW**  
**Engineering**

OREGON DEPARTMENT OF TRANSPORTATION

Located Line

**AAA SECTION**

**BBB HIGHWAY**

CCC COUNTY

DRAFTED BY III, Date?

BEARINGS: Oregon Coordinate System of 1983(91), HHH zone.

COORDINATES: This drawing utilizes a Local Datum Plane (LDP) which is relative to the Oregon Coordinate System of 1983(91), HHH zone, with respect to the local latitude and ground elevation. The LDP coordinates define true ground distances. To convert the LDP coordinates, for the control points, to the Oregon Coordinate System of 1983(91), HHH zone, multiply the LDP coordinates by GGG.

FIELD NOTES: This drawing shows the results of an Oregon Department Of Transportation (ODOT) survey. The field survey notes, book number FFFF, are available from ODOT files in Salem, Oregon.

DRAWING <MAP NAME>

PROJECT NO. EEEE

ACCESS CONTROL LINE — — — — —

pw:\WPDOTAPPL127.partners.odot.or.gov\PW\_ODOT\_PROD\Documents\STIP\_Projects\19110\_Pilot\Right of Way\19110\_Surv\_RW.dgn :: RW\_Design

3/16/2017



EDIT SCALE BAR FOR PROPER ANNOTATION SCALE OF DRAWINGS

REVISION HISTORY		
DATE	NAME	DESCRIPTION
MM/DD/YYYY	PLACE NAME HERE	DESCRIPTION OF REVISION

PLACE STATUS STAMP HERE

**The path will still work with Project Wise and currently it gives the whole server path.**

Cad Standards has decided to truncate this by removing the servers path.

Until the “Pen Tables” are updated we moved the auto date below so as to not have them override each other.



## Right of Way Map Updates/Revisions:

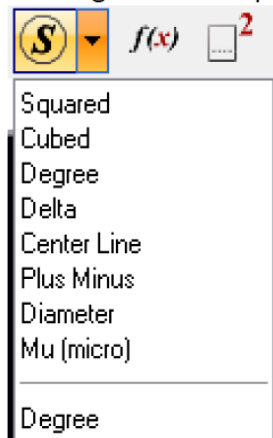
- Please fill in the revision notes whenever you update/change anything in the drawing like deed recordings, file changes, cancelations etc. this lets people down the line know what has been done. also update the pdf and let “Maps and Plans” know of the update.
- The available map should match any documents in circulation.



## Working with Lucida Sans Unicode “True Type” fonts in RW Engineering.

- No more secret codes needed to get special characters!
- East Team Document:  
<http://www.oregon.gov/ODOT/CS/east/Documents/Special%20Characters%20and%20Fractions%20in%20TrueType%20Fonts%20for%20MicroStation%20V8i.pdf>

**Symbols or special characters** can be placed in the Text Editor – Word Processor, at the insertion point (cursor), by clicking on the drop-down menu to the right of the Insert Symbol icon.



Items above the horizontal line are ODOT favorites; items below the line are recently used.



## Example:

The screenshot displays a software interface for road design. On the left, a 'Survey' panel shows a tree view with 'Proposed R/W' selected. Below it are dropdown menus for 'Temp Easement', 'Perm Easement', 'Fee Take', 'Access Control', and 'Sale'. A 'Misc' section lists various text types, with 'Parcel Area Text' highlighted. The main window, titled 'View 1, RW Design', shows a 'Place Text' dialog box with the following settings: Method: By Origin, Text Style: ODOT RW Slant, Active Angle: 0.0000°, Height: 0.0083, Width: 0.0083, and an unchecked 'Apply changes to all text' option. Below the dialog is a 'Text Editor - Word Processor' window with a toolbar and the text '12,000 ft<sup>2</sup>±' displayed in a pink, slanted font.





## Some discussion on Project Wise Workflow

- A discussion was brought up as to why we were directed to only put our line work and minimal text(Easements and PLSS info)into the “Base” dgn!
- All of our other work does not apply to the contract plans drafting and gets in the drafters and designers way. We go to all the work to draft our products that then they only turn off and have to redisplay anyway.
- We provide the “Alg” file for them to display in there dgn with the style, level etc. for their needs.
- Also we don't want to just rename the “Working” dgn; you still have to copy and update every time you make a change and it is easier to forget to update the “Base” dgn; and now you have two dgn's that are different.
- As long as you are not changing line location etc. then there is no need to update the “Base” with this method.
- We don't want anyone referencing into the “Survey” domain and our “Working” dgn the intent is to only share the finished product needed to design and draft.
- **If there is other comments or discussion out there please feel free to share. We all know this is different and a “Work in Progress.” Though change is hard let's all strive to make it work!**





Any Questions, Comments or Concerns Please Contact RW  
Engineering Section at:

**Scott Morrison, PLS**

Lead Right of Way Surveyor  
Oregon Department of Transportation  
Geometronics Unit  
4040 Fairview Industrial Drive S.E., MS-4  
Salem, OR 97302-1142  
(503)986-3672

[Scott.R.MORRISON@odot.state.or.us](mailto:Scott.R.MORRISON@odot.state.or.us)

**Paul J. Morin, PLS**

Right of Way Surveyor  
Oregon Department of Transportation  
Geometronics Unit  
4040 Fairview Industrial Drive SE, MS-4  
Salem, OR 97302-1142  
(503) 986-3034

[paul.j.morin@odot.state.or.us](mailto:paul.j.morin@odot.state.or.us)

**Michael R. Fallert P.L.S.**

Rotational Development Right of Way Surveyor  
Oregon Department of Transportation  
Geometronics Unit  
4040 Fairview Industrial Drive S.E., MS-4  
Salem, OR 97302-1142  
(503)986-7143

[Michael.Fallert@odot.state.or.us](mailto:Michael.Fallert@odot.state.or.us)