

NOTE: STREAM PROFILES ARE ON LEVEL 43
OVERHEAD LINES ARE ON LEVEL 42

PROJECT NAME: OR202, LYON'S FORD, & BATTLE CREEK (NEHALEM HWY) BRIDGES
(LYONS CREEK BR & FORD CREEK BR SECTION)

COUNTY: COLUMBIA

E.A. NUMBER: PE000530-000-J12

KEY NUMBER: 11950

HORIZONTAL DATUM: NAD 83

VERTICAL DATUM: NGVD 1929

COMPUTER FILES: /USR/PROJECT/11950 (ON NE1810B)

PROJECT MANAGER:

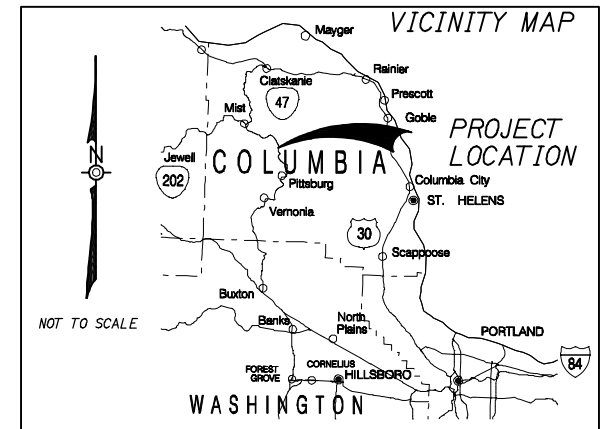
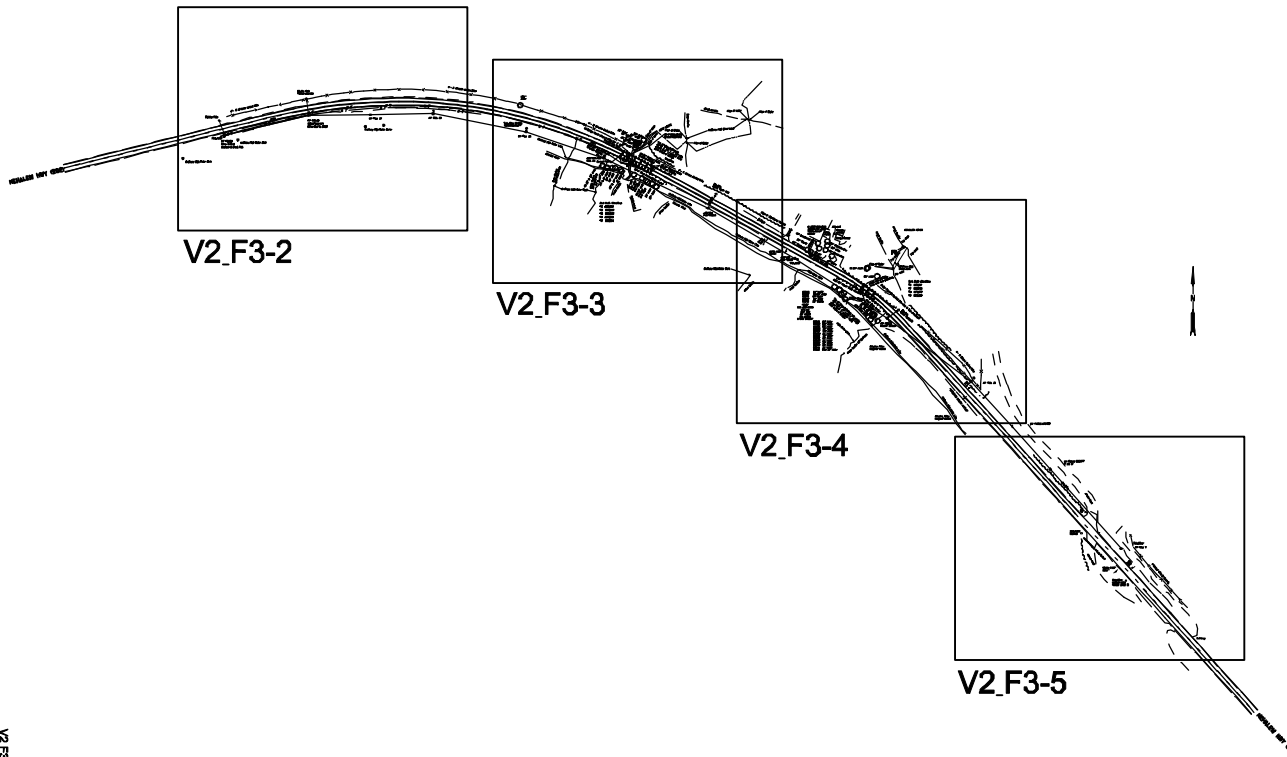
PROJECT SURVEYOR:

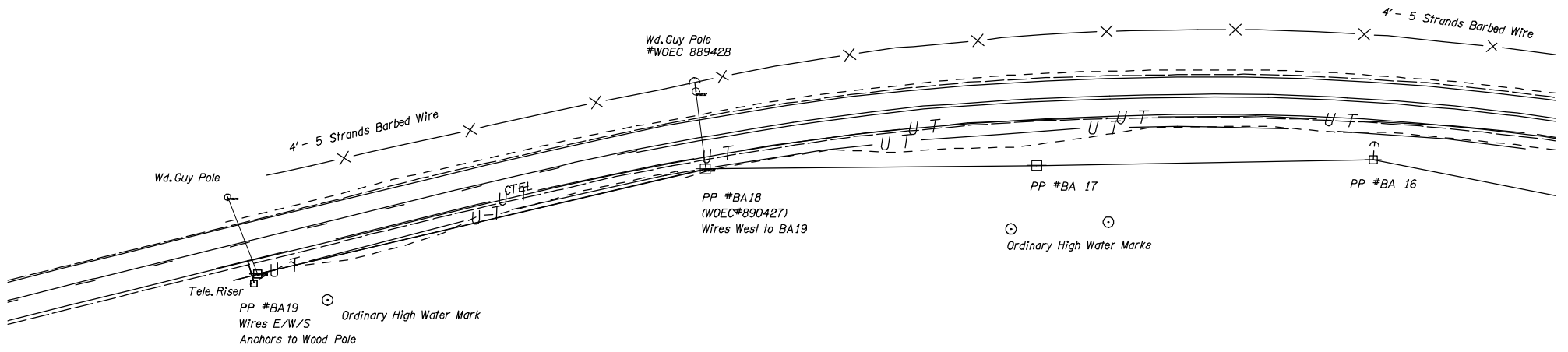
CONTACT PERSON:

TELEPHONE:

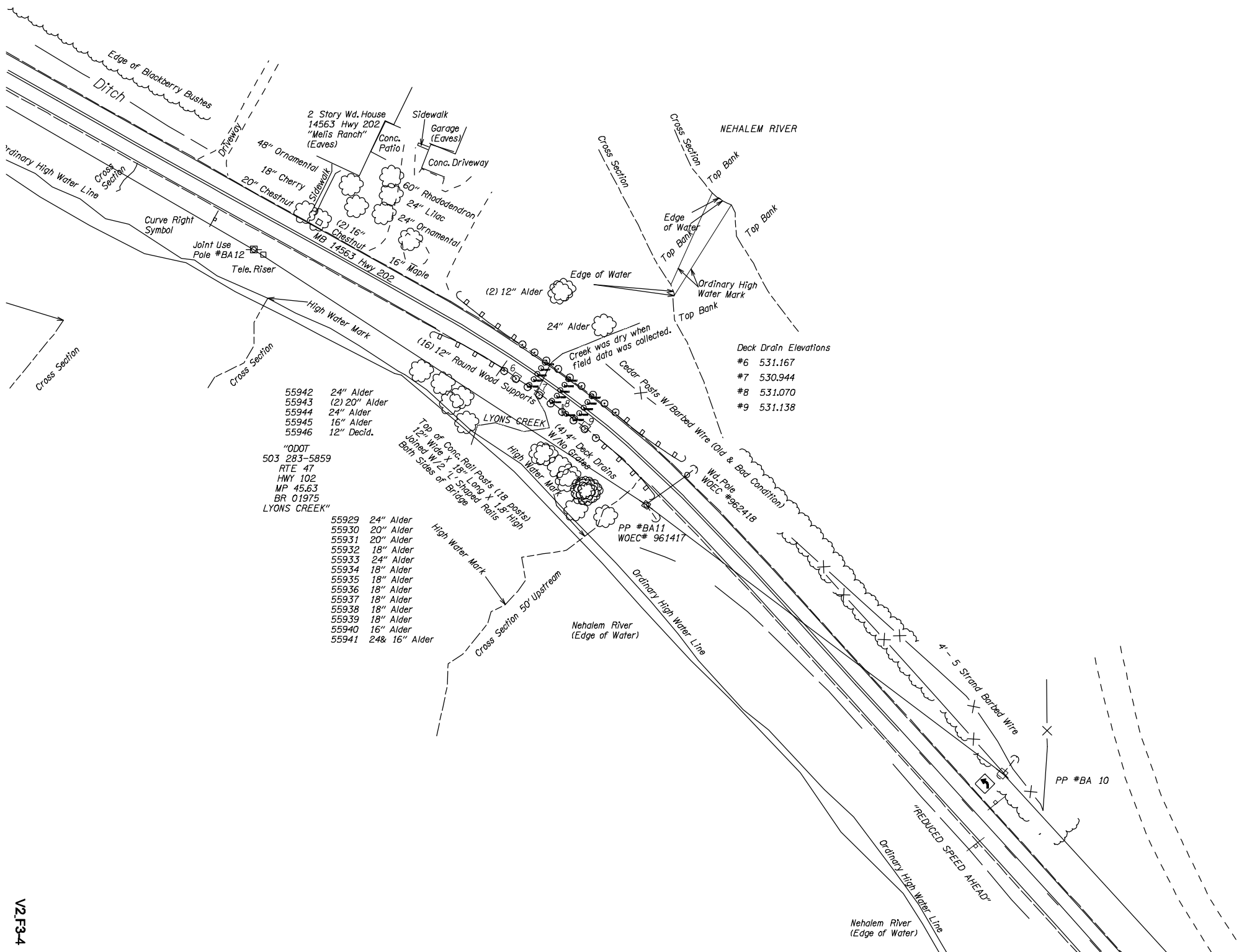
DATE: SEPTEMBER 2003 (11950le2_Lyons_Ford.dgn)

REVISED: 10-21-2003





○
 Ordinary High Water Mark



2 Story Wd. House
14563 Hwy 202
"Melis Ranch"
(Eaves)

Sidewalk
Garage (Eaves)
Conc. Driveway

48" Ornamental
18" Cherry
20" Chestnut
60" Rhododendron
24" Lilac
24" Ornamental
(2) 16" Chestnut
16" Maple

Deck Drain Elevations
#6 531.167
#7 530.944
#8 531.070
#9 531.138

55942 24" Alder
55943 (2) 20" Alder
55944 24" Alder
55945 16" Alder
55946 12" Decid.

"ODOT
503 283-5859
RTE 47
HWY 102
MP 45.63
BR 01975
LYONS CREEK"

55929 24" Alder
55930 20" Alder
55931 20" Alder
55932 18" Alder
55933 24" Alder
55934 18" Alder
55935 18" Alder
55936 18" Alder
55937 18" Alder
55938 18" Alder
55939 18" Alder
55940 16" Alder
55941 24", 16" Alder

PP #WOEC 981403
BA 9

Brushpile

Access Road

Tele. Riser
(Buried)

Conc. Culvert

Access Road

"DYNA-TEST
SITE"

Tele. Riser
(Buried Cable
#0605 1482 5)

Tele. Riser
PP #BA 7

4' Barbed Wire W/ Electric

Driveway