

R/W Map No.
BRIDGE DETAILS CHECKED

Provide Right Of Way Map Number On The First Sheet Only.
If No R/W Map Is Available, Modify Text To Read "No R/W Map". (Available From The Cache)

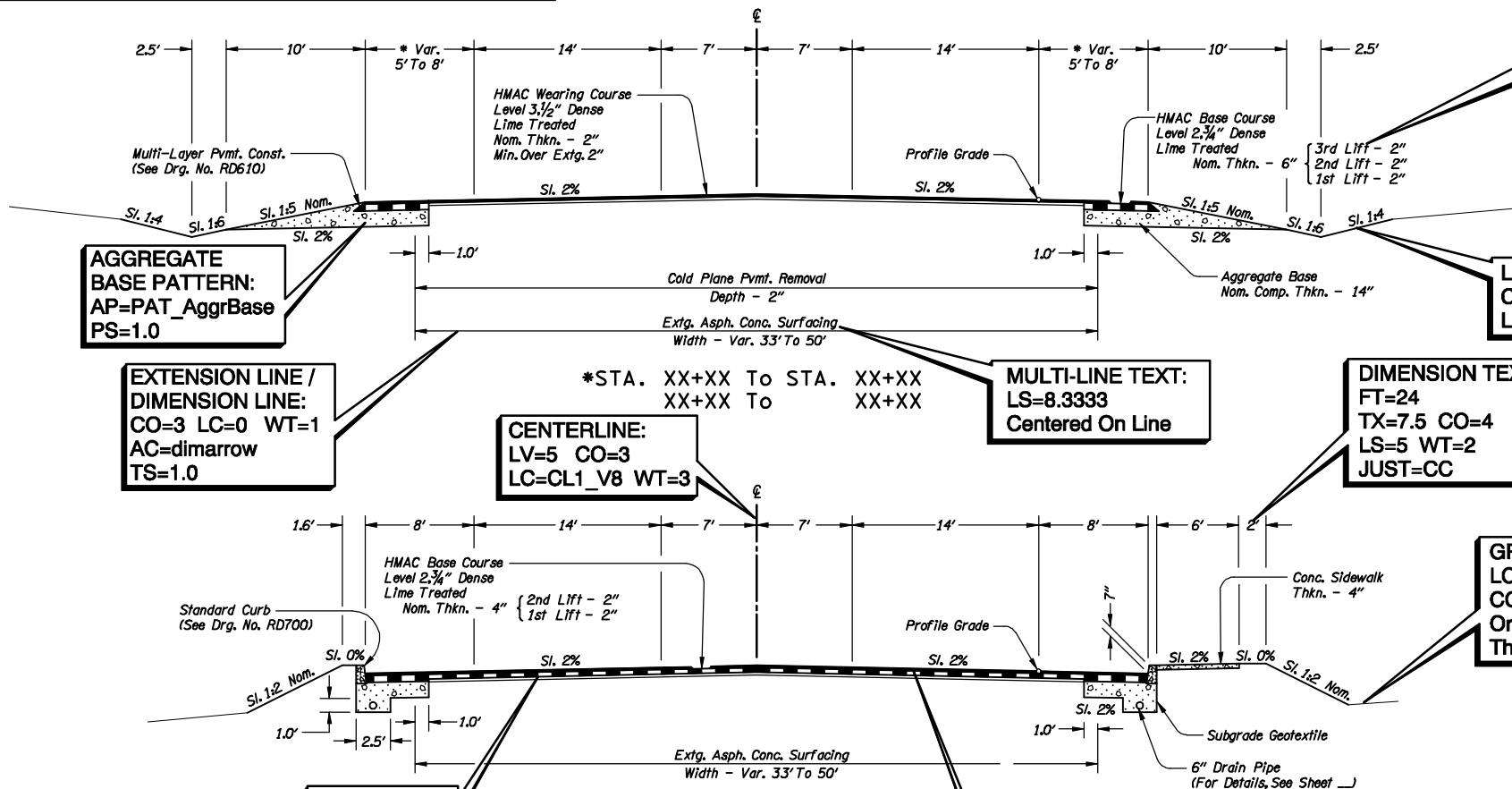
KEY ELEMENT NOTATION:
FT=24
TX=7.5 CO=4
LS=5 WT=2
JUST=LT
Obtain Brackets From The Cache

LINWORK:
CO=3
LC=0 WT=2

DIMENSION TEXT:
FT=24
TX=7.5 CO=4
LS=5 WT=2
JUST=CC

GROUND LINE:
LC=3
CO=2 WT=1
Or Obtain From The Cache

TITLE TEXT:
Obtain Text From KEYNUF.NAM



AGGREGATE BASE PATTERN:
AP=PAT_AggrBase
PS=1.0

EXTENSION LINE / DIMENSION LINE:
CO=3 LC=0 WT=1
AC=dimarrow
TS=1.0

CENTERLINE:
LV=5 CO=3
LC=CL1_V8 WT=3

MULTI-LINE TEXT:
LS=8.3333
Centered On Line

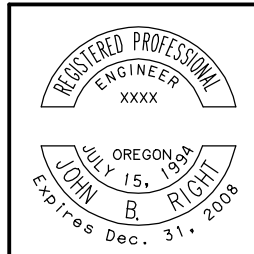
Obtain Base Course From The Cache

Obtain Wearing Course Pattern From The Cache

Place All Elements On Level name P_RDWY_PLAN_Detail

STATIONING TEXT:
FT=4
TX=12.5 CO=3
LS=8.3333 WT=3
JUST=LT

Consultant Logo May Be Placed Here

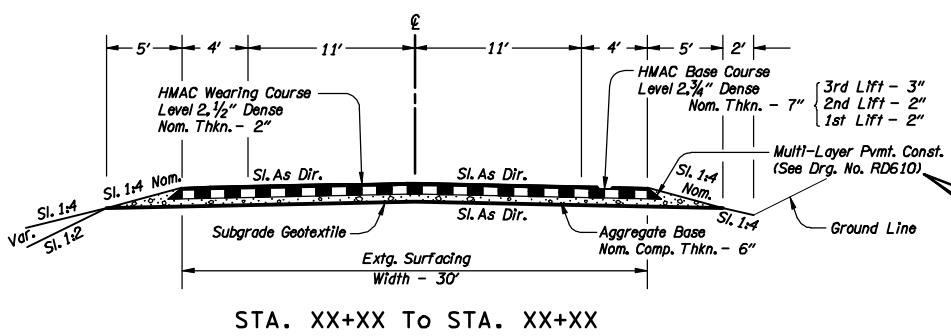


OREGON DEPARTMENT OF TRANSPORTATION
ROADWAY ENGINEERING SECTION

TYPICAL SECTIONS

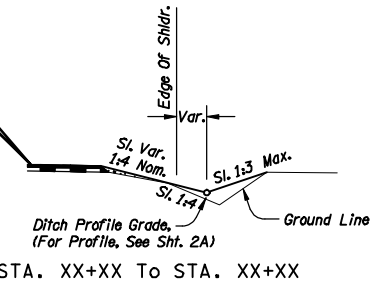
SHEET NO.

BRIDGE DETAILS CHECKED

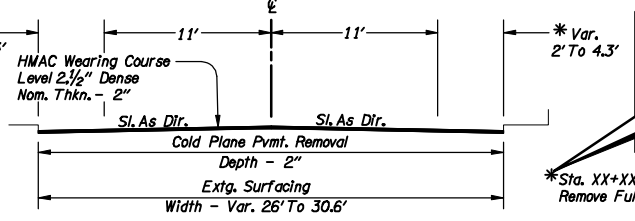


Partial Section
"Stacked" Above
Its Relative
Section

Std. Drawing Numbers Are Shown
The First Time An Item Appears
On Project Typical Sections

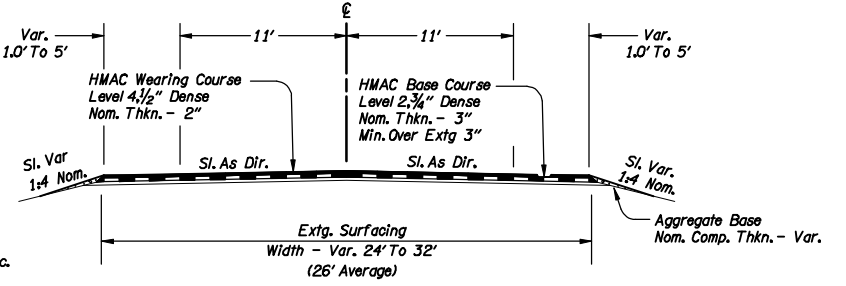


Roadway Sheets That
Contain Bridge Items
Need The Structural
Designer's Initials On
Every Sheet Dealing
With Structures.
(Available From
ROAD.GEL,
AC=ESDC) Must Be
Wet Signed



REFERENCE
SYMBOL:
Asterisk
For Extra
Notation

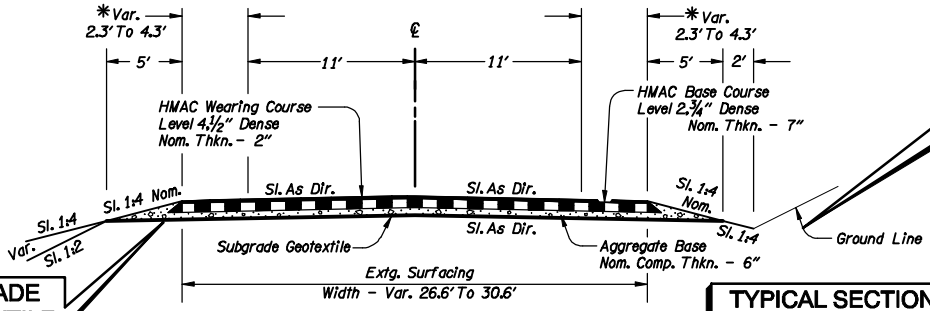
STA. XX+XX To STA. XX+XX (Structure)
XX+XX To XX+XX (Structure)
* XX+XX To XX+XX (Structure)



STA. XX+XX To STA. XX+XX
XX+XX To XX+XX
XX+XX To XX+XX

All Lines
To Be
One Text
Node

SUBGRADE
GEOTEXTILE:
CO=5
WT=5



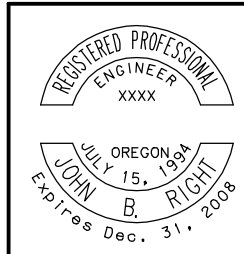
BENT LEADER:
CO=3 WT=1
AC=dimarrow
TS=1
Or Use ODOT Menu/
General/Arrows

Place All Elements
On Level name
P_RDWY_PLAN_Detail

Signature Block

STA. XX+XX To STA. XX+XX
XX+XX To XX+XX
* XX+XX To XX+XX
XX+XX To XX+XX
XX+XX To XX+XX
XX+XX To XX+XX

TYPICAL SECTION SEQUENCE:
1. Main Roadway (Begin At Top
Of Sheet With Stationing
Increasing Down The Sheet)
2. Minor Road
3. Details (Place Typicals Top
To Bottom, Left To Right, Or
Centered Within The Sheet)

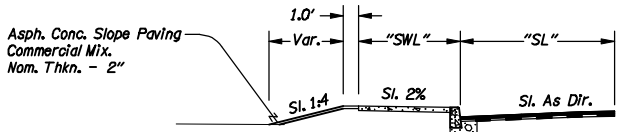


OREGON DEPARTMENT OF TRANSPORTATION
ROADWAY ENGINEERING SECTION

TYPICAL SECTIONS

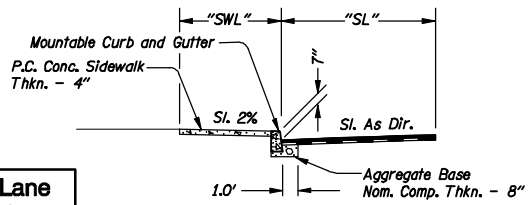
SHEET NO.

??V-??

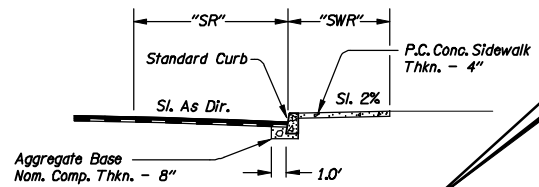


STA. XX+XX To STA. XX+XX
 XX+XX To XX+XX
 XX+XX To XX+XX
 XX+XX To XX+XX

"V Number" Is Stored
 In The Reference File
 KEYNUF.NAM
 FT=2 TX=12.5
 CO=3 JUST=CC
 WT=3 (Available in
 the Cache)



STA. XX+XX To STA. XX+XX
 XX+XX To XX+XX



STA. XX+XX To STA. XX+XX

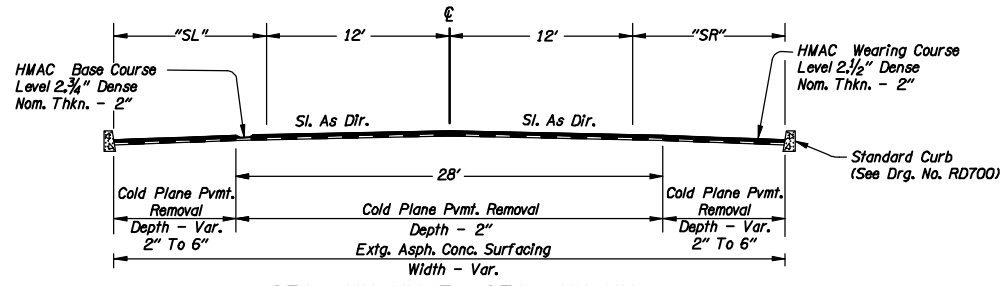
"STACKED" SECTION
 STATIONING TEXT:
 FT=4 TX=9.4
 CO=3 LS=8.2
 WT=2 JUST=LT

Table For Lane
 And Shoulder
 Tapering

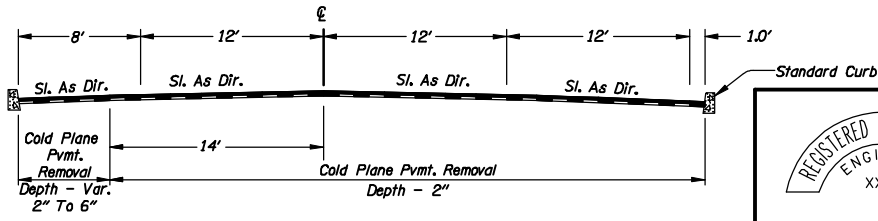
| STA. To | STA. | "SL" (feet) | "SR" (feet) |
|-----------|-----------|-------------|-------------|
| 331+33 | 333+00 | 10 | 6 |
| 333+00 | 339+89 | 10 | 1.0 |
| 339+89 | 340+78 | 1.0 | 1.0 |
| 340+78 | 341+70 | 1.0 | 1.0 |
| 341+70 | 342+68 | 1.0 To 6 | 8 |
| 342+68 | 343+66 | 6 | 8 |
| 343+66 | 344+58 | 8 | 8 |
| 344+58 | 346+62 | 8 | 8 To 10 |
| 346+62 | 349+90 | 8 | 10 To 12 |
| 352+36 | 356+29 | 8.3 To 12.7 | 16 To 10 |
| 356+29 | 358+43 | 12.7 | 8 To 6.7 |
| 358+43 | 359+58 | 10 | 6 To 4 |
| 359+58 | 363+51 | 10 | 4 |
| 363+51 | 364+76 | 4 | 4 To 8 |
| 364+76 | 366+47 | 4 | 8 |
| "C"121+36 | "C"124+67 | 12 | 13 |

Table For
 Sidewalk
 Tapering

| STA. To | STA. | "SWL" (feet) | "SWR" (feet) |
|-----------|-----------|--------------|--------------|
| 339+89 | 331+03 | 6.5 | 0 |
| 340+81 | 339+89 | 6.5 | 6 |
| 341+04 | 340+81 | 0 | 6 |
| 343+34 | 341+70 | 6.5 | 0 |
| 348+55 | 344+58 | 0 | 5 |
| 352+42 | 348+55 | 0 | 0 |
| 356+03 | 352+42 | 0 | 8 |
| 356+49 | 356+36 | 6.5 | 0 |
| 357+44 | 356+49 | 6.5 | 6.5 |
| 358+26 | 357+44 | 0 | 6.5 |
| 358+56 | 358+39 | 6 | 0 |
| 361+61 | 358+56 | 6 | 5 |
| 363+45 | 361+61 | 6 | 0 |
| 366+37 | 363+61 | 5 | 6 |
| 366+63 | 366+37 | 0 | 6 |
| "C"122+80 | "C"121+36 | 6.5 | 0 |



STA. XX+XX To STA. XX+XX
 XX+XX To XX+XX
 XX+XX To XX+XX
 XX+XX To XX+XX



(For Surfacing Details Not Shown, See Section Above)
 STA. XX+XX To STA. XX+XX

Place All Elements
 On Level name
 P_RDWY_PLAN_Detail



OREGON DEPARTMENT OF TRANSPORTATION
 ROADWAY ENGINEERING SECTION

TYPICAL SECTIONS

SHEET NO.

BRIDGE DETAILS CHECKED

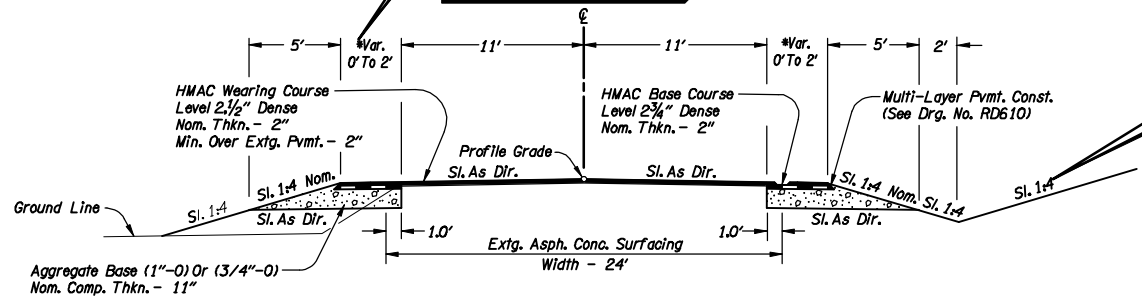
3-5

PRELIMINARY COPY
INFORMATION ONLY
DATE 08/11/08

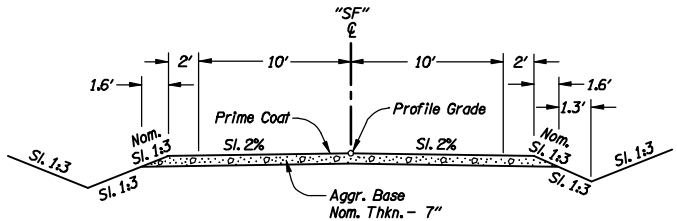
"Preliminary Copy" Block
(AC=PRELIM) Stored
In The Reference File
KEYNUF.NAM. Use
ODOT.CEL Cell Library.

Reference To
Variable Dimension
Stationing

FILL SLOPE LABEL:
FT=24 TX=7.5
CO=4 JUST=LB
WT=2 Slopes And
Labels Available
From The Cache



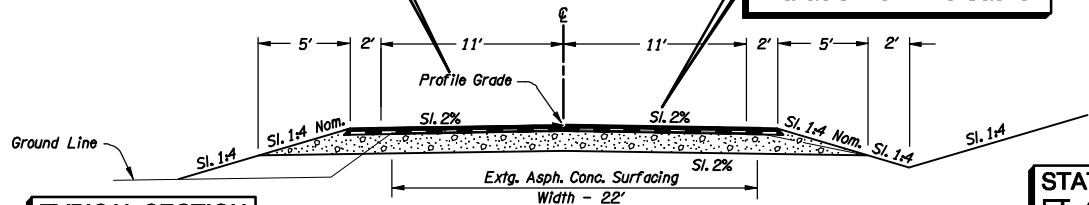
*STA. XX+XX.X To STA. XX+XX.X (Taper Section)
XX+XX.X To XX+XX.X
* XX+XX.X To XX+XX.X (Taper Section)



STA. "SF" XX+XX To STA. "SF" XX+XX
DIVERSION - SOUTH FORK BRIDGE

PROFILE GRADE LABEL:
FT=24 TX=7.5
CO=4 JUST=LT WT=2
Available From The Cache

SLOPE LABEL:
FT=24 TX=7.5 CO=4
JUST=BC WT=2
Slopes And Labels
Available From The Cache



(For Surfacing Details Not Shown, See Section Above)

STA. XX+XX.X To STA. XX+XX.X
XX+XX.X To XX+XX.X
XX+XX.X To XX+XX.X (Structure)
XX+XX.X To XX+XX.X
XX+XX.X Thru [EQUA. XX+XX.X Bk. = To STA. XX+XX.X
XX+XX.X Ah.]

STATION EQUATION:
FT=4 TX=8.2 CO=3
LS=5.44 WT=2
JUST=LT
Available From
The Cache

TYPICAL SECTION
STATIONING:
FT=4 TX=12.5
CO=3 LS=8.3333
WT=3 JUST=LT
Available From
The Cache

Place All Elements
On Level name
P_RDWY_PLAN_Detail



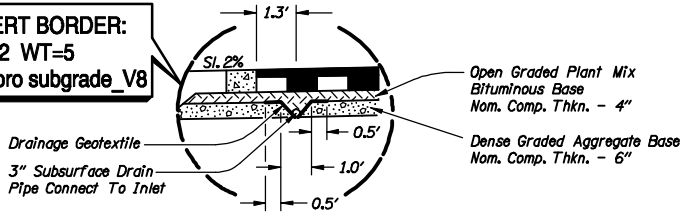
OREGON DEPARTMENT OF TRANSPORTATION
ROADWAY ENGINEERING SECTION

TYPICAL SECTIONS
SHEET NO.

BRIDGE DETAILS CHECKED

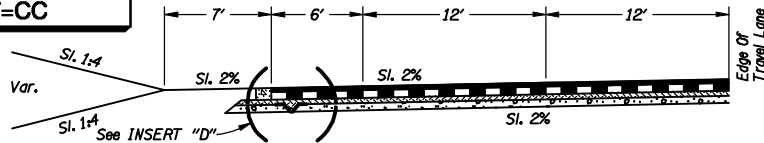
5-4

INSERT BORDER:
CO=2 WT=5
LC=pro subgrade_V8

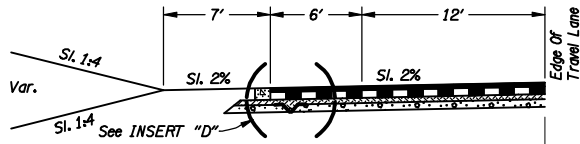


INSERT TITLE:
FT=4 TX=9.4
CO=3 WT=2
JUST=CC

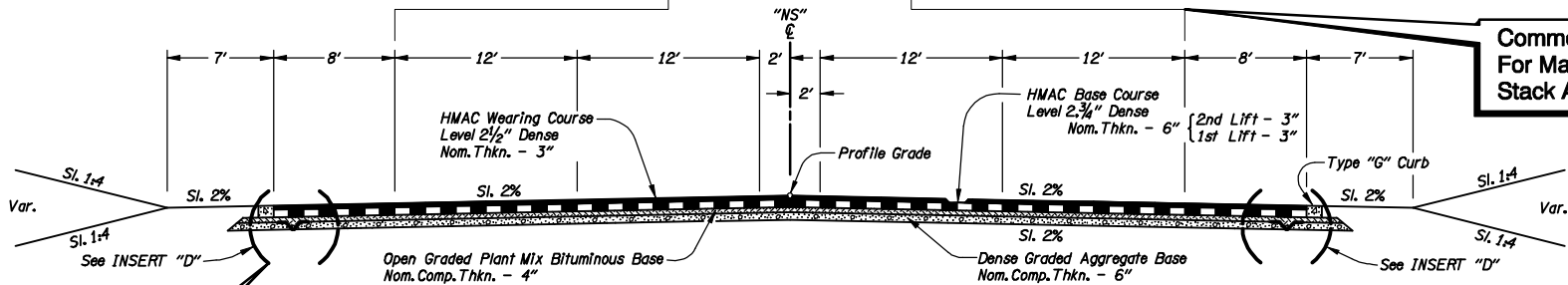
INSERT "D"



STA. "NS" XX+XX.X To STA. "NS" XX+XX.X



STA. "NS" XX+XX.X To STA. "NS" XX+XX.X
"NS" XX+XX.X To "NS" XX+XX.X



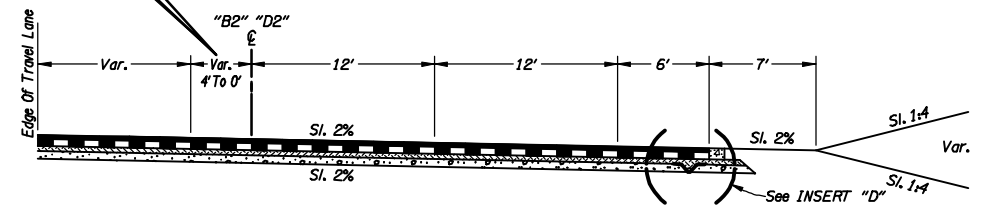
Blow-Up For Greater Detail

STA. "NS" XX+XX.X To STA. "NS" XX+XX.X
"NS" XX+XX.X To "NS" XX+XX.X (Taper)
"NS" XX+XX.X To "NS" XX+XX.X

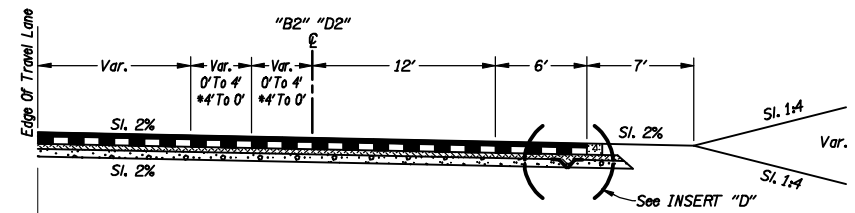
Text Is Narrowed To Fit

Advance Copy Block Stored In The Reference File KEYNUF.NAM.
AC=Advance AS=1
Use ODOT.CEL Cell Library

ADVANCE COPY
SUBJECT TO CHANGE
WITHOUT NOTICE



STA. "NS" XX+XX.X To STA. "NS" XX+XX.X

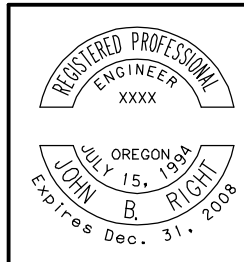


*STA. "NS" XX+XX.X To STA. "NS" XX+XX.X
"NS" XX+XX.X To "NS" XX+XX.X

Common Method For Matching Stack Alignment

Place All Elements On Level name P_RDWY_PLAN_Detail

Plan Sheet Border From ODOT.CEL

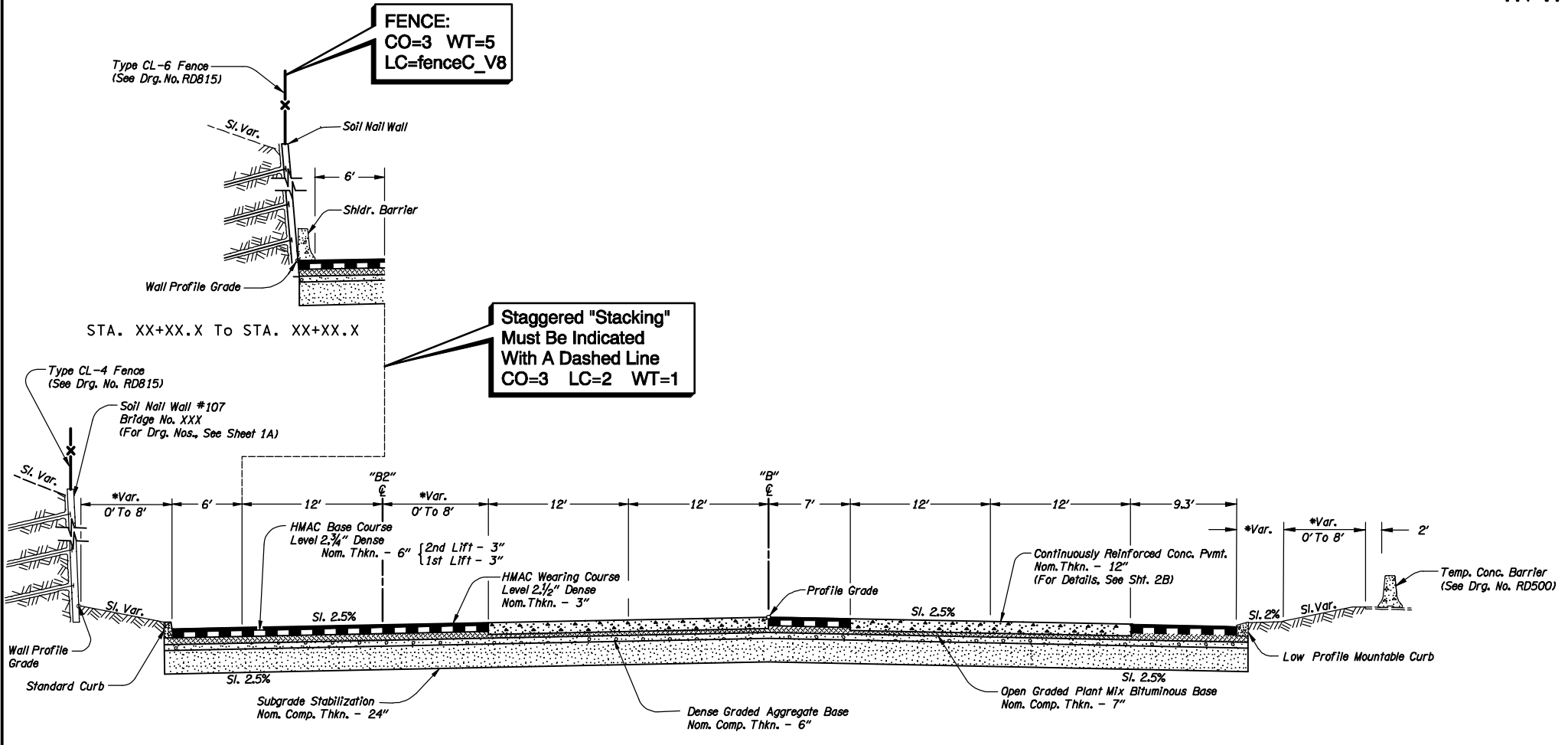


OREGON DEPARTMENT OF TRANSPORTATION
ROADWAY ENGINEERING SECTION

TYPICAL SECTIONS

SHEET NO.

BRIDGE DETAILS CHECKED



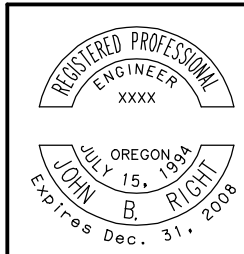
FENCE:
 CO=3 WT=5
 LC=fenceC_V8

Staggered "Stacking"
 Must Be Indicated
 With A Dashed Line
 CO=3 LC=2 WT=1

STA. XX+XX.X To STA. XX+XX.X

STA. XX+XX To STA. XX+XX
 * XX+XX To XX+XX (Taper)

Place All Elements
 On Level name
 P_RDWY_PLAN_Detail



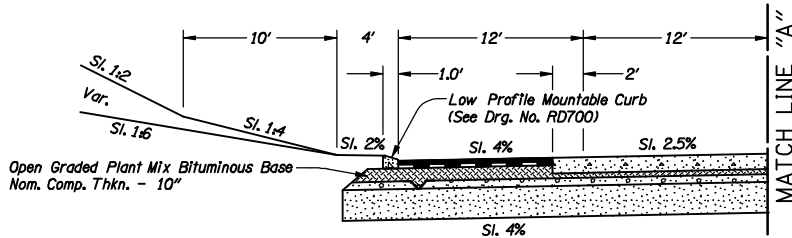
OREGON DEPARTMENT OF TRANSPORTATION
 ROADWAY ENGINEERING SECTION

TYPICAL SECTIONS

SHEET NO.

9-5

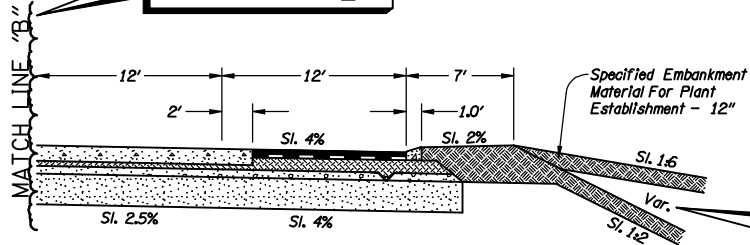
BRIDGE DETAILS CHECKED



MATCH LINE TEXT:
 FT=2 TX=12.5
 CO=3 WT=3
 JUST=CT

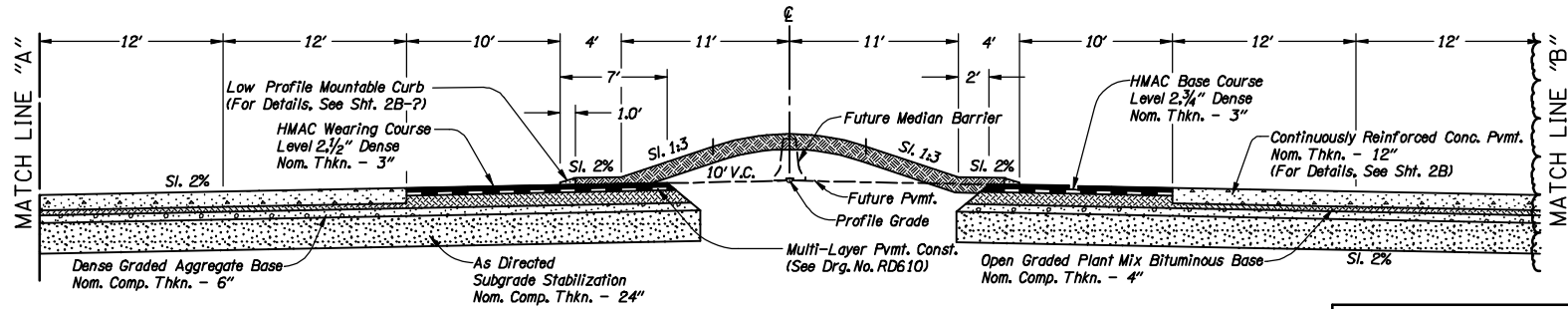
MATCH LINE:
 CO=3 WT=5
 LC=pro subgrade_v8

**Method Of
 Breaking Typical
 Section When It
 Is Too Long**



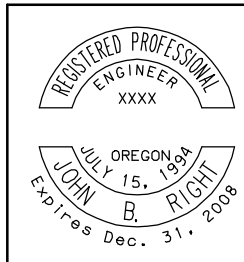
**VARIABLE SLOPE
 TEXT:**
 FT=24 TX=7.5
 CO=4 WT=2
 JUST=LB

**Obtain Patterns
 From ODOT.CEL**



STA. XX+XX To STA. XX+XX
 XX+XX To XX+XX (Structure)
 XX+XX To XX+XX

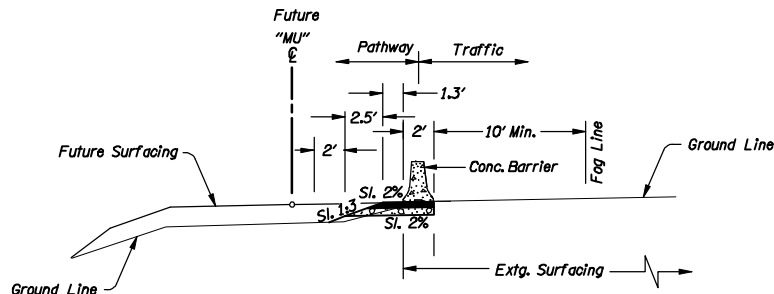
**Place All Elements
 On Level name
 P_RDWY_PLAN_Detail**



**OREGON DEPARTMENT OF TRANSPORTATION
 ROADWAY ENGINEERING SECTION**

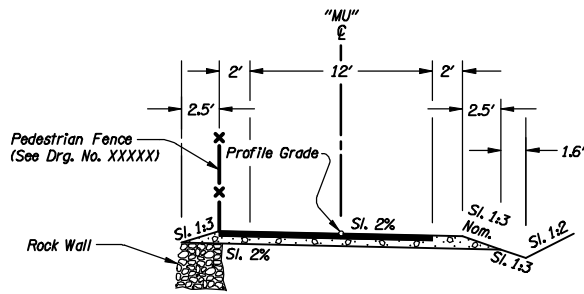
TYPICAL SECTIONS

SHEET NO.



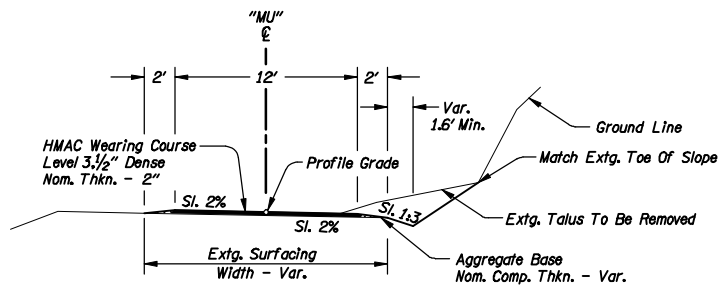
(For Surfacing Details Not Shown, See Section Right)

STA. "MU" XX+XX To STA. "MU" XX+XX
"MU" XX+XX To "MU" XX+XX

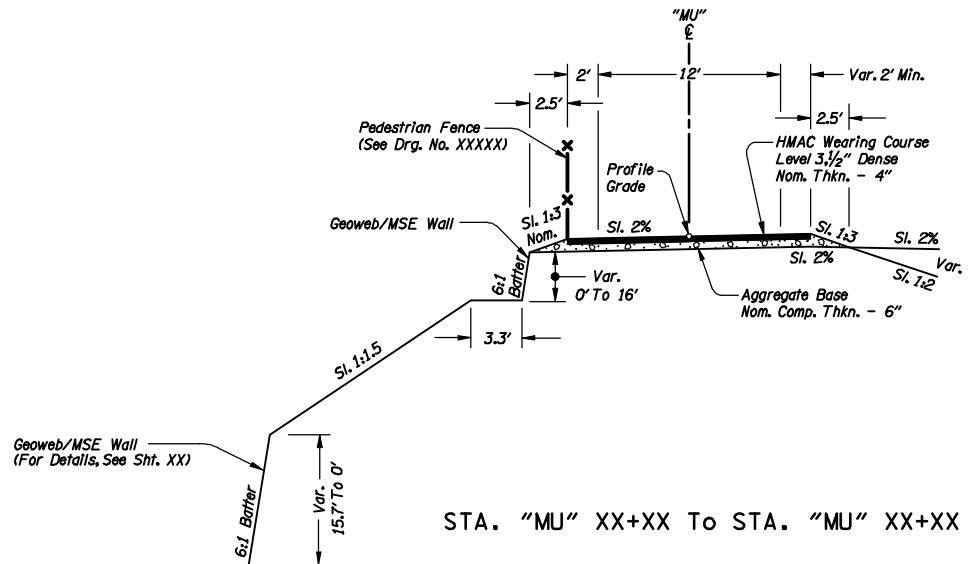


(For Surfacing Details Not Shown, See Section Top Right)

STA. "MU" XX+XX To STA. "MU" XX+XX
"MU" XX+XX To "MU" XX+XX

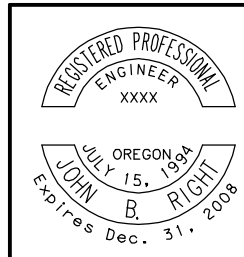


STA. "MU" XX+XX To STA. "MU" XX+XX
"MU" XX+XX To "MU" XX+XX
"MU" XX+XX To "MU" XX+XX
"MU" XX+XX To "MU" XX+XX



STA. "MU" XX+XX To STA. "MU" XX+XX

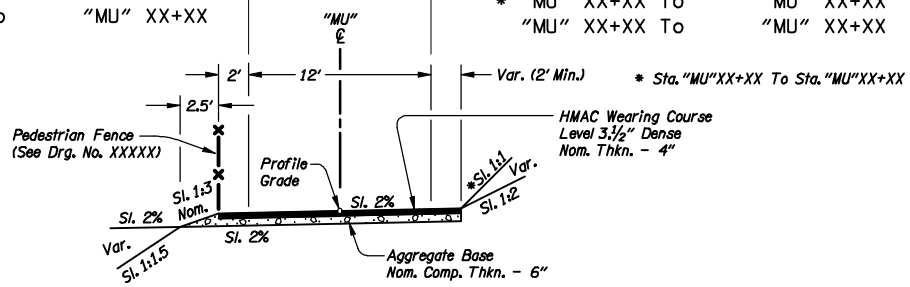
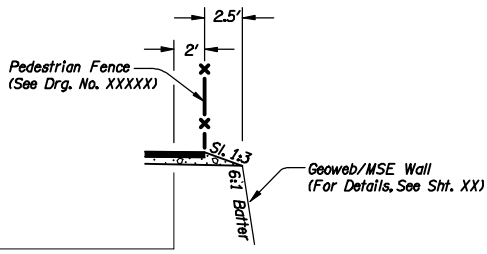
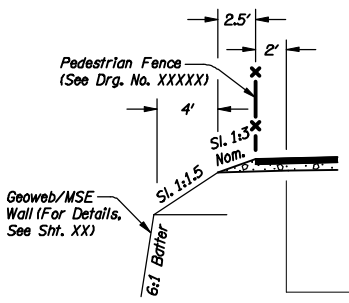
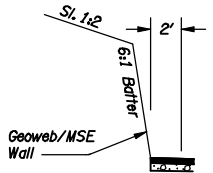
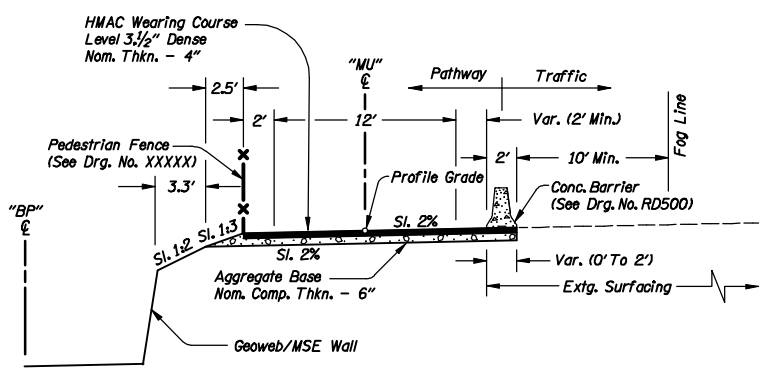
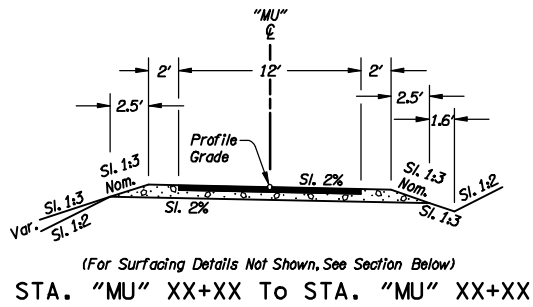
Place All Elements
On Level name
P_RDWY_PLAN_Detail



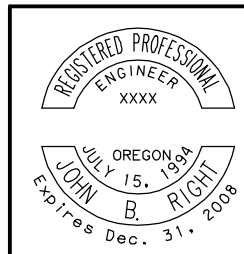
OREGON DEPARTMENT OF TRANSPORTATION
ROADWAY ENGINEERING SECTION

TYPICAL SECTIONS

SHEET NO.



Place All Elements
 On Level name
 P_RDWY_PLAN_Detail

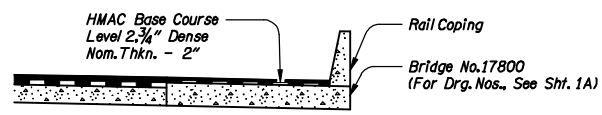


OREGON DEPARTMENT OF TRANSPORTATION
 ROADWAY ENGINEERING SECTION

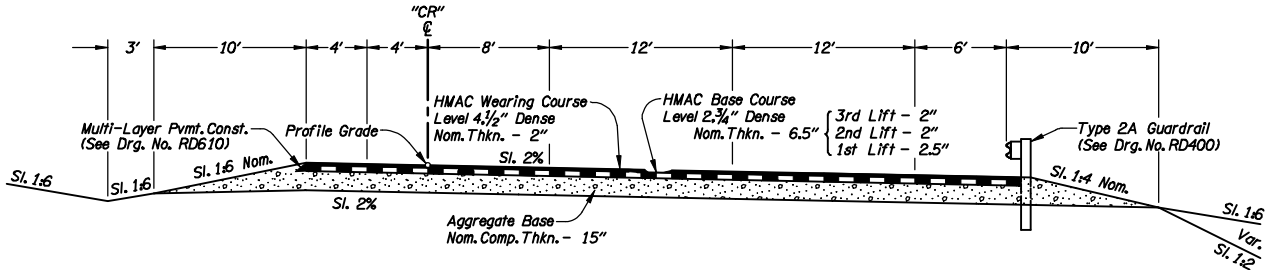
TYPICAL SECTIONS

SHEET NO.

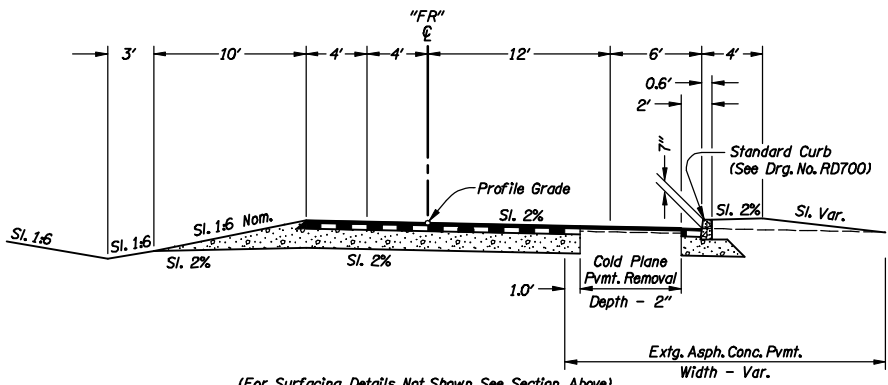
BRIDGE DETAILS CHECKED



STA. "CR" XX+XX To STA. "CR" XX+XX



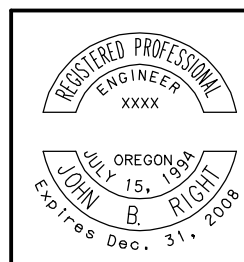
STA. "CR" XX+XX To STA. "CR" XX+XX (Taper Section)
"CR" XX+XX To "CR" XX+XX



(For Surfacing Details Not Shown, See Section Above)

STA. "FR" XX+XX To STA. "FR" XX+XX

Place All Elements
On Level name
P_RDWY_PLAN_Detail



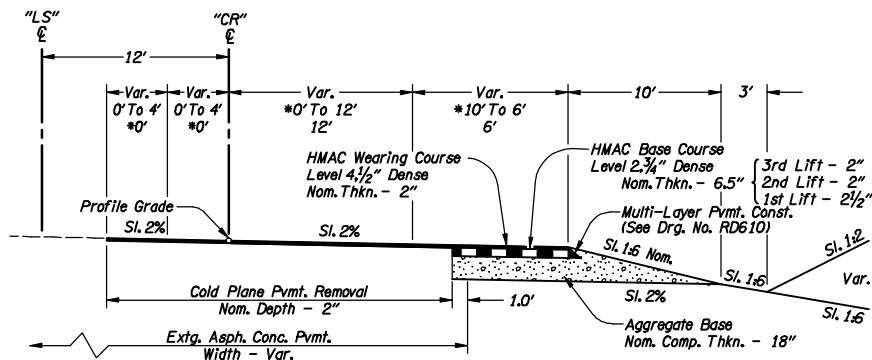
OREGON DEPARTMENT OF TRANSPORTATION
ROADWAY ENGINEERING SECTION

TYPICAL SECTIONS

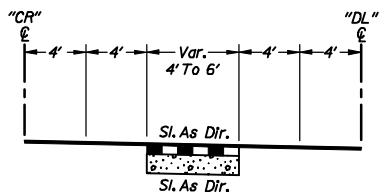
SHEET NO.

01-5

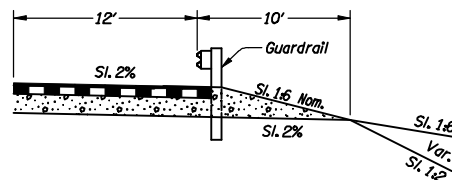
BRIDGE DETAILS CHECKED



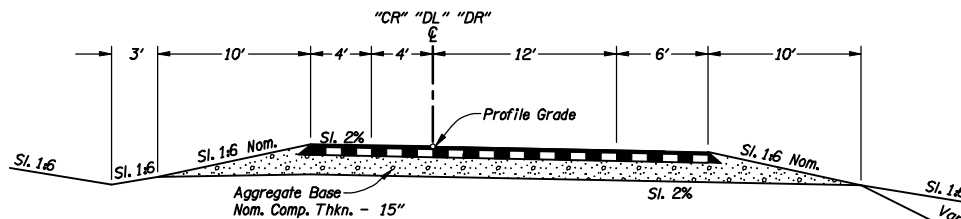
*STA. "LS" XX+XX To STA. "LS" XX+XX (Taper Section)
 "CR" XX+XX To "CR" XX+XX



STA. "DL" XX+XX To STA. "DL" XX+XX

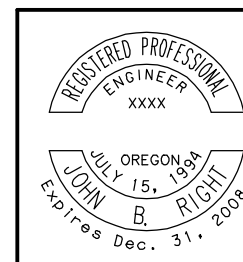


STA. "DL" XX+XX To STA. "DL" XX+XX
 "DL" XX+XX To "DL" XX+XX



(For Surfacing Details Not Shown, See Section Above)
 STA. "CR" XX+XX To STA. "CR" XX+XX
 "DL" XX+XX To "DL" XX+XX
 "DR" XX+XX To "DR" XX+XX

Place All Elements
 On Level name
 P_RDWY_PLAN_Detail



OREGON DEPARTMENT OF TRANSPORTATION
 ROADWAY ENGINEERING SECTION

TYPICAL SECTIONS

SHEET NO.

5-11