



Oregon State
University



Portland
State
UNIVERSITY

SAFETY INVESTIGATION MANUAL

Online Training

Presented by:

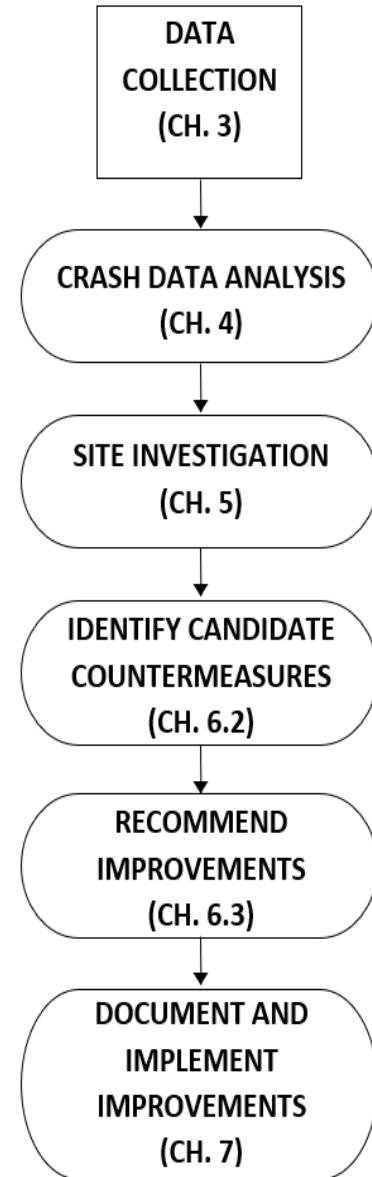
David Hurwitz, PhD

Professor of Transportation Engineering

Oregon State University

Manual Overview and Purpose (Ch. 1)

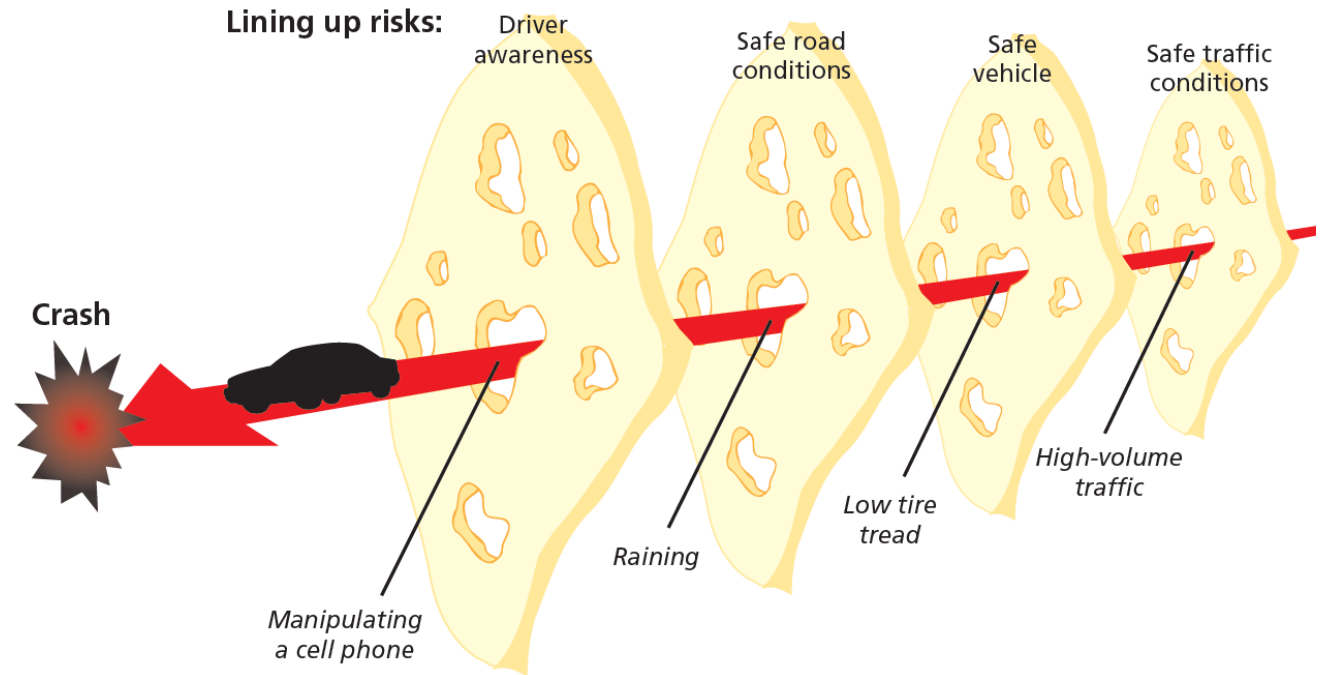
- Outline the steps for Safety Investigations
 - Six step process
- Provide a resource for ODOT safety investigators
 - Screening, Evaluation, Documentation



Safety Investigations (Ch. 2)

- Data driven approach to selecting countermeasures
- Two approaches:
 - Hotspot
 - Systemic
- Two principles:
 - Crashes are rare events
 - Humans make errors

Swiss Cheese Model of Crash Causation



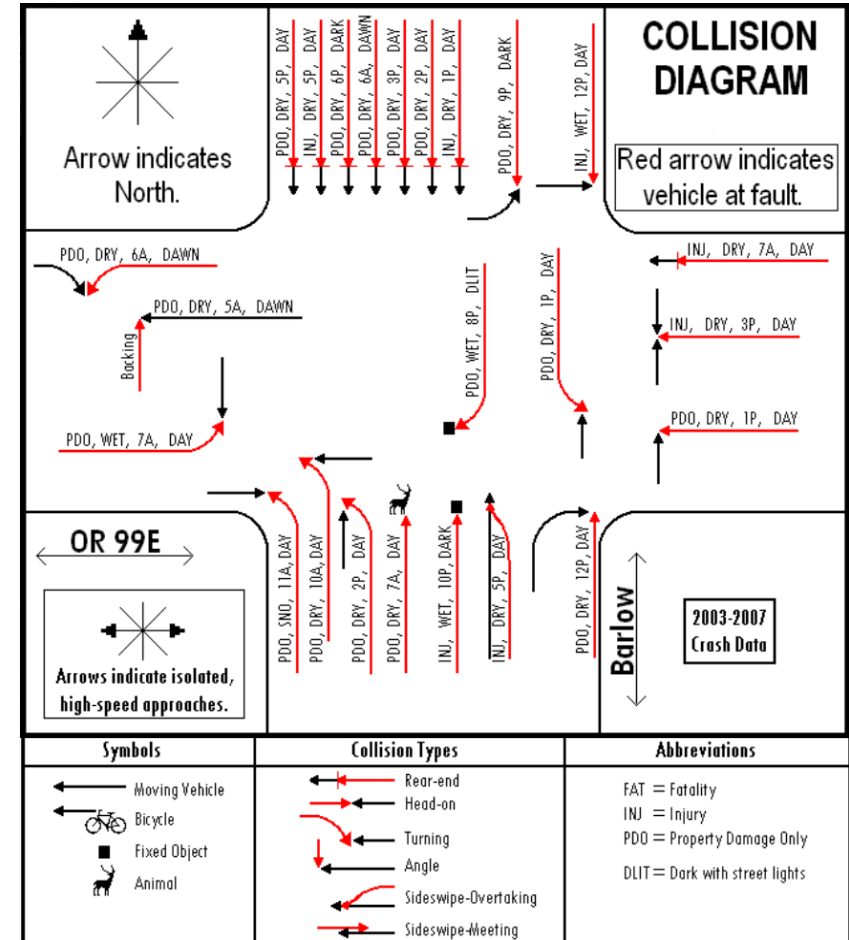
SOURCES: Adapted from Seppa (2013) and Reason (2000).
RAND RR2333-1.3

Data Types and Sources (Ch. 3)

- A variety of types and sources of data is helpful in safety investigations
- Basic information:
 - Crash data – location, severity, causes
 - Route numbers, functional class, roadway characteristics
- Several sources for data:
 - Crash Data System
 - Digital Video Log
 - TransGIS
 - Virtual Highway Corridor (VHC) tool
 - Site Investigation (Ch. 5)

Crash Pattern Identification (Ch. 4)

- Crash Pattern Worksheet
 - Tests individual parameters
 - Highlights unusual patterns
- Additional training material for Workbook available



Collision Diagram showing five years of crash data. Include severity, pavement conditions, time of day, and light conditions. Indicate vehicle at fault with red arrow. Include description of symbols/abbreviations.

Countermeasure Selection (Ch. 5 and 6)

- Several tables available (Ch. 5)
 - Intersection and Mid-block crashes
 - Provides crash pattern, probable cause, what to document, and general countermeasures
- Cost, availability, feasibility, and effectiveness considered in selection process
- Other sources include:
 - FHWA Safety Emphasis Area websites
 - FHWA CMF Clearinghouse

Site Investigation

Crash Data
Analysis

Review Digital Video
Log and Highway
Inventory Reports

Complete the top portion
of the Site Investigation
Form

Conduct field investigation and document
effort with the completed Site Investigation
Form, a completed Roadway Inventory
Checklist, and supplemental worksheets as
needed

Identify Candidate
Countermeasures

Documentation (Ch. 7)

- Final step in safety investigation process
- Documenting evaluation and project recommendations
- SIM Workbook contains *SIM Report* tab
- **It is important to check if solutions have delegated authority processes**

Additional Content (Appendix)

- Site Distance Evaluation
 - Intersection site distance (with examples)
 - Stopping site distance
 - Decision site distance
 - Passing site distance
 - Sign legibility/message comprehension distance
- SIM Worksheet Instructions

