



# Review of Interstate Truck Speeds

Preliminary Data and Process

Doug Bish, Traffic Services Engineer

March 2017



## Agenda

- Why?
- OARs
- Investigations
- Preliminary Data
- Schedule

# Why now?

Proposed  
Legislative bill  
to raise truck  
speeds

ODOT  
concerned  
about  
legislating  
without data

ODOT  
proposed to  
study truck  
speeds





## History

2003 ODOT  
Investigates  
Interstate  
Speeds and  
Raises Some

2015  
Legislature  
Raises  
Speeds in  
Eastern  
Oregon

2017 ODOT  
investigates  
Truck Speeds



# Oregon Administrative Rules Speed Limits on Interstates

Investigations

Impacts and  
Issues

Public  
Comments



# Oregon Administrative Rules Engineering Investigations

Speeds



Average  
and 85<sup>th</sup>  
percentile

Crash



Number  
and rates

Roadway



Curves  
lanes and  
shoulders

Traffic



ADT  
Congestion  
and  
% Trucks

Weather



Type and  
Frequency



# Speed Zone Review Panel



## Recommendation to OTC

Reasonable and Safe  
Given Existing Conditions  
As Indicated by Data  
Issues Report  
And Public Comment



# Investigations



I-5: South of Portland  
I-84: Troutdale to The Dalles  
I-205: Jct. of I-5 to West Linn



Anywhere the speed is currently 65 mph for cars and 55 mph for trucks





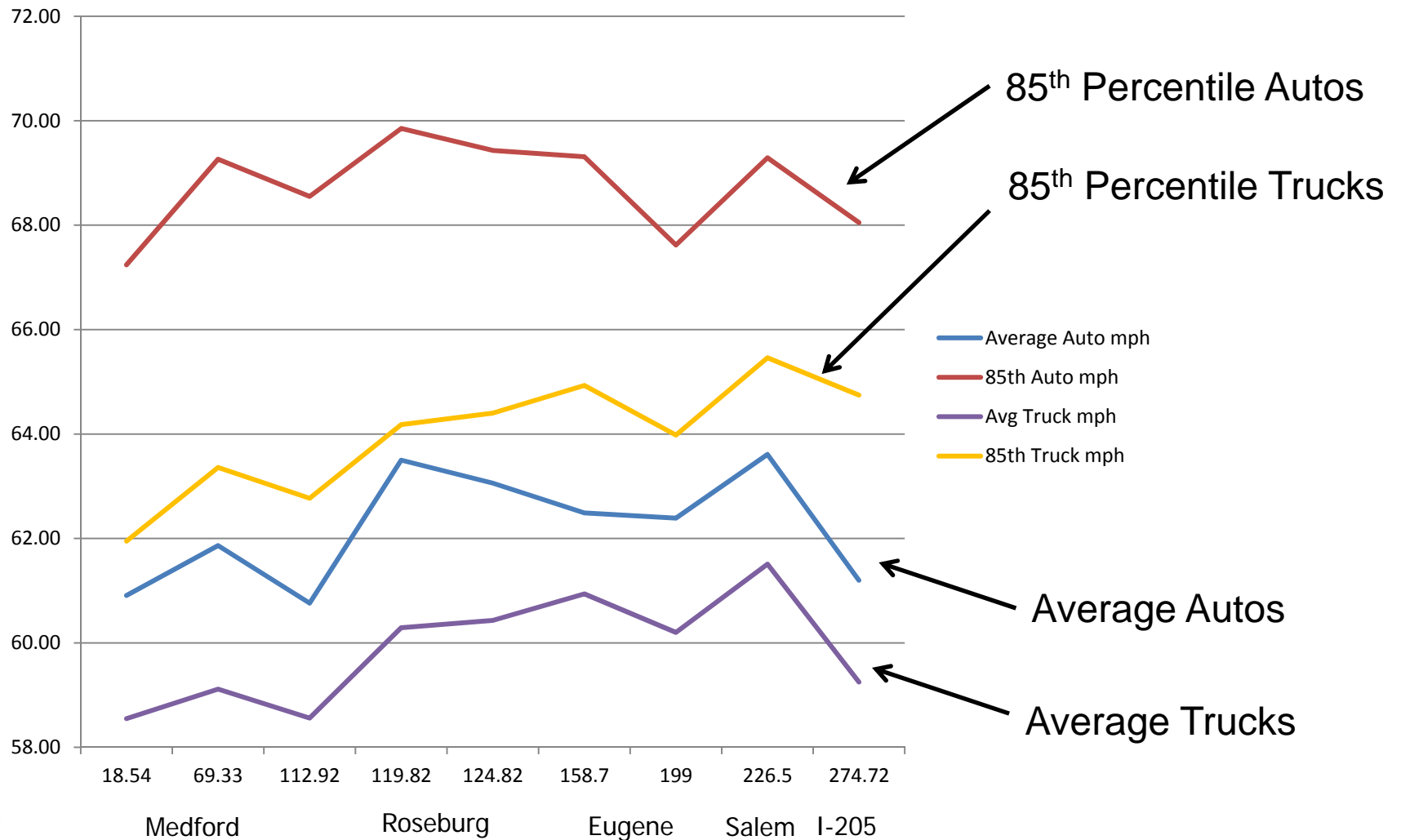


**Process**  
ODOT Investigations  
PSU Issues Report  
Public Meetings  
SZRP Recommendation  
Commission Public Meeting on the Rule



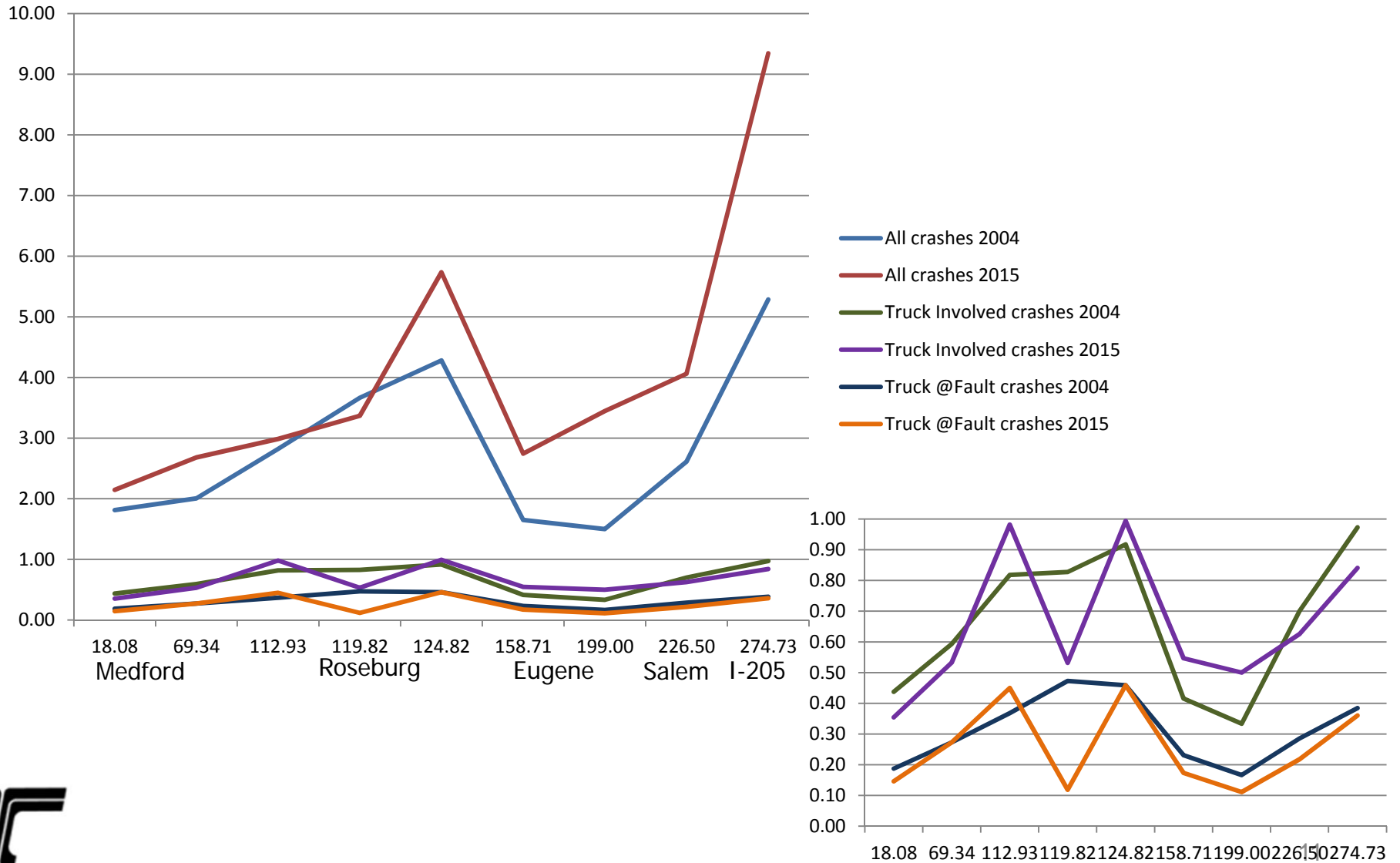
# Vehicle Speeds on I-5 (Preliminary data)

Average and 85<sup>th</sup> Percentile in 65/55 mph Sections



# Truck Crashes on I-5

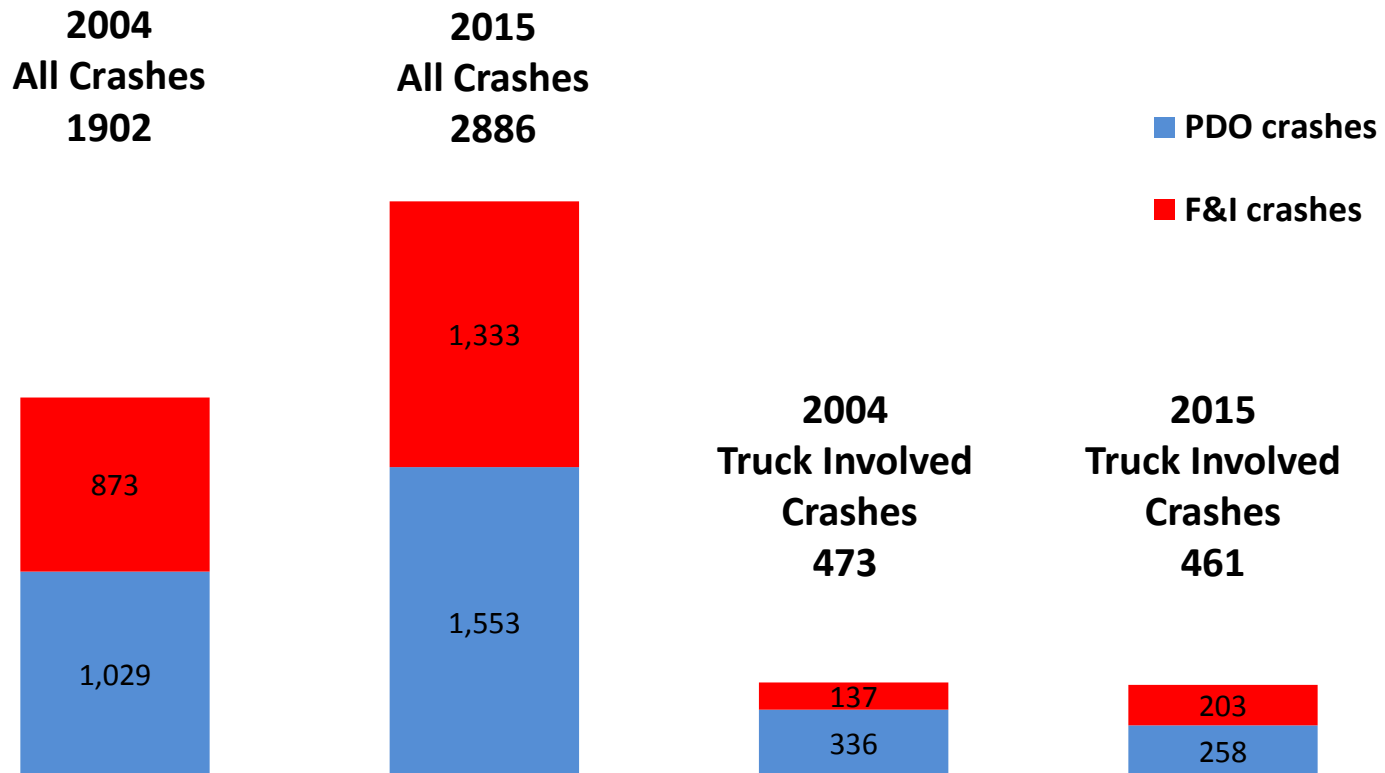
## Crashes per mile per year



# Traffic Crashes on I-5

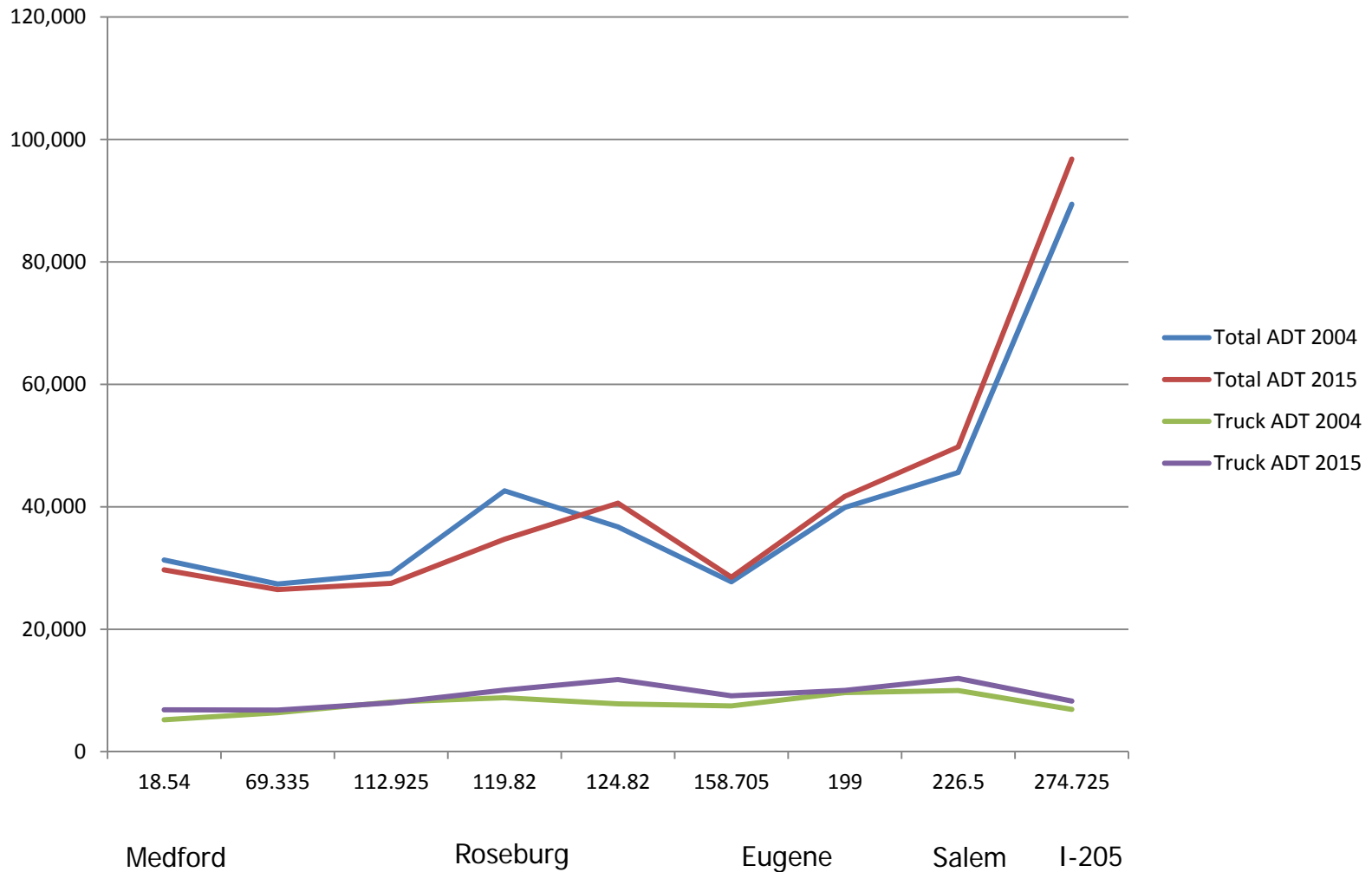
3 years of crashes for investigated segments

**Truck at Fault**  
2004 46%  
2015 40%



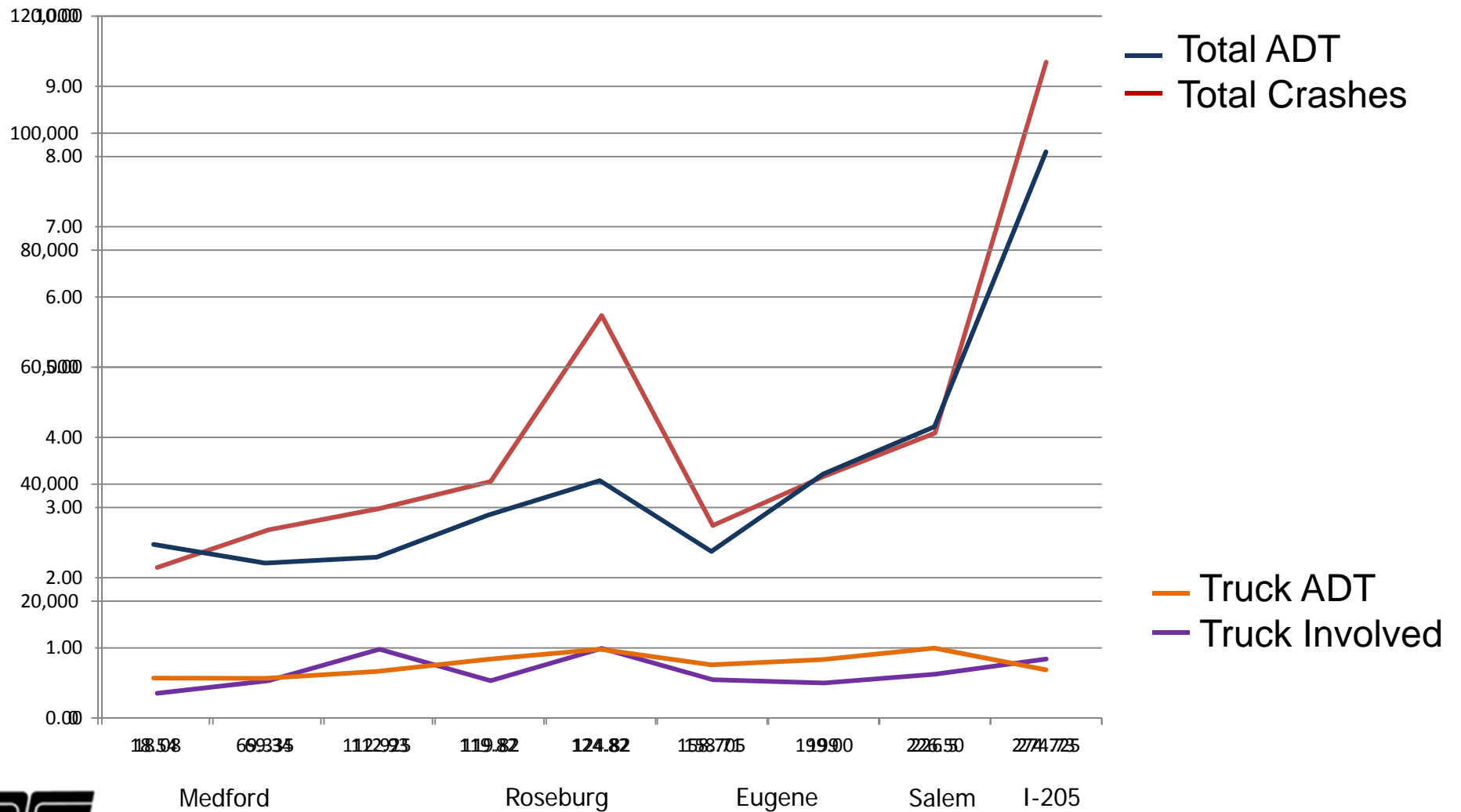
# Traffic Volumes on I-5

## Average Vehicles per Day



# Truck Crashes overlaid with Volumes

Crashes per mile per year



# Schedule



**Nov 2016 – ODOT began investigations**  
**Feb 2017 - PSU began an issues report.**  
**March 2017 – Public Meetings**



**June 2017 - SZRP make recommendations to Commission**  
**Aug 2017 - Commission make a final decision.**



Thank You!





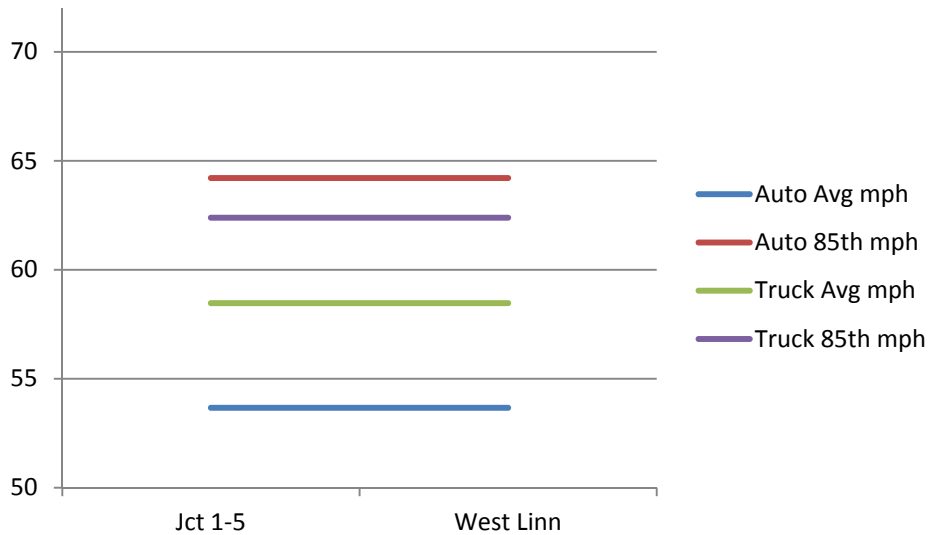
# Supplementary Slides



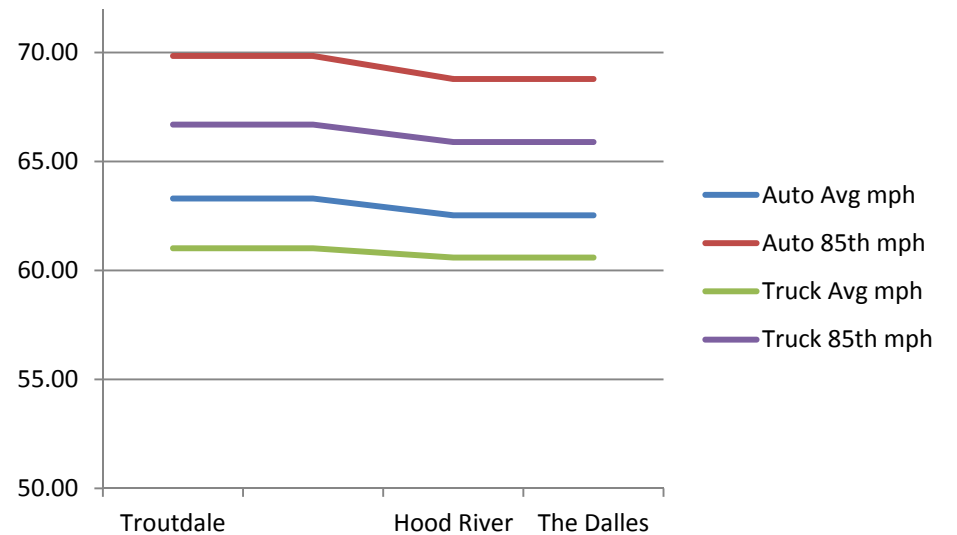
# Vehicle Speeds on I-205 and I-84

Average and 85<sup>th</sup> Percentile (preliminary data)

### I-205



### I-84



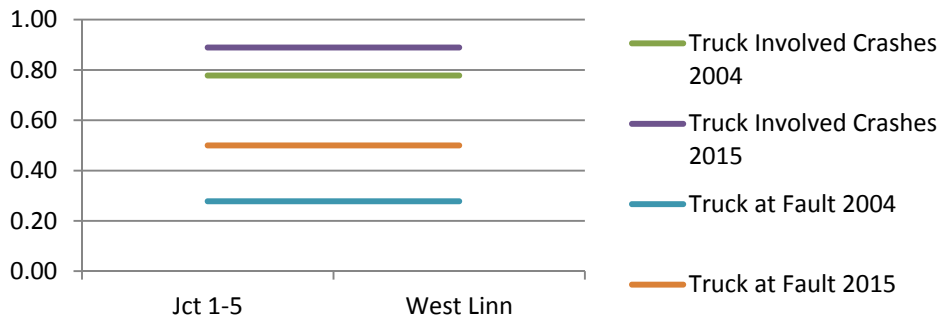
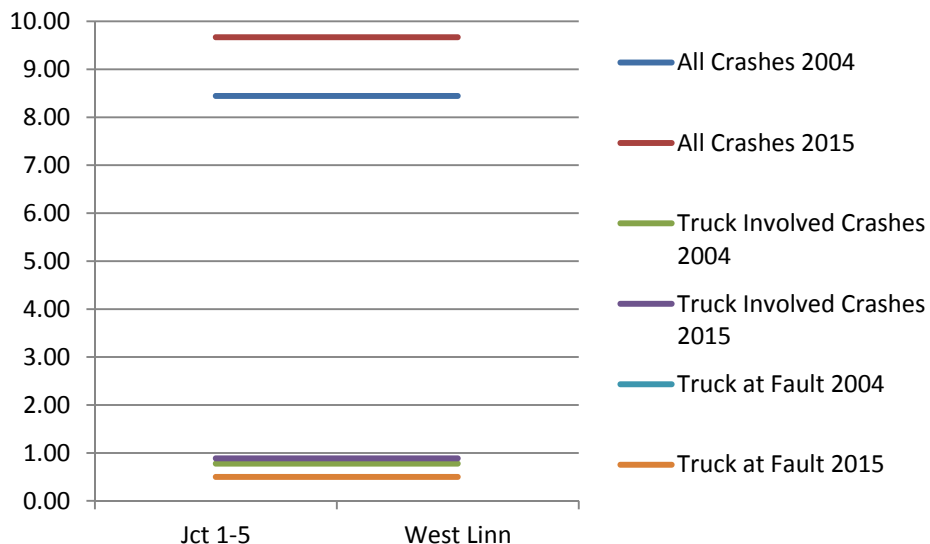
## 65/55 Posted Sections



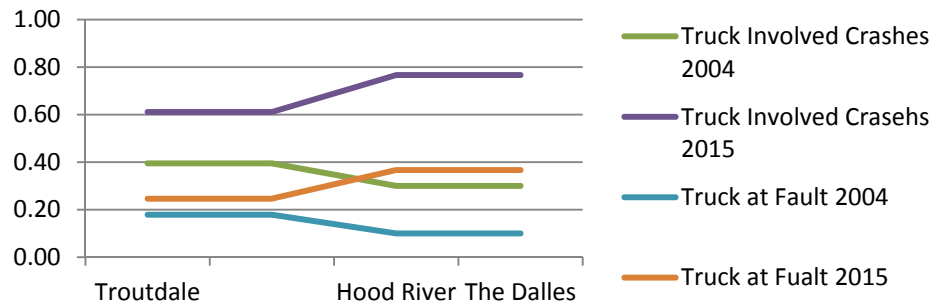
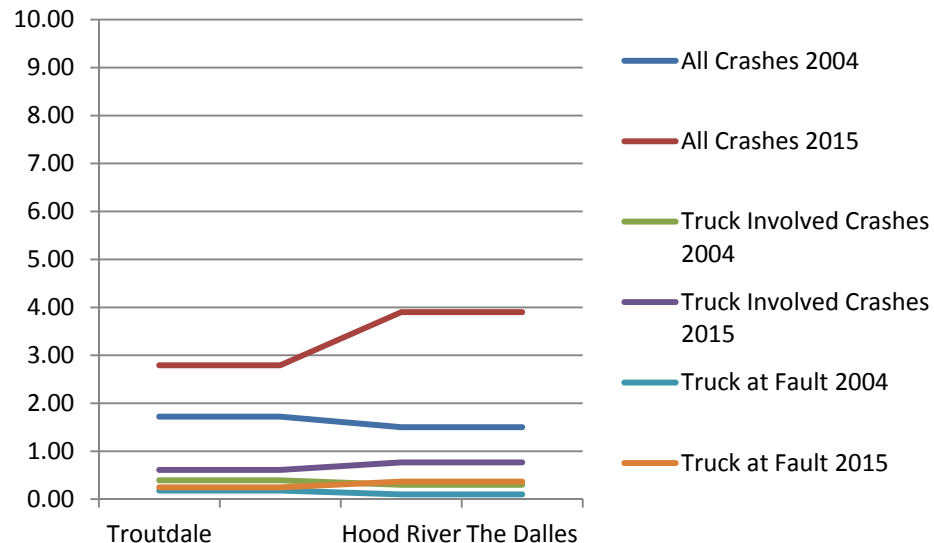
# Truck Crashes on I-205 and I-84

Crashes per mile per year

## I-205



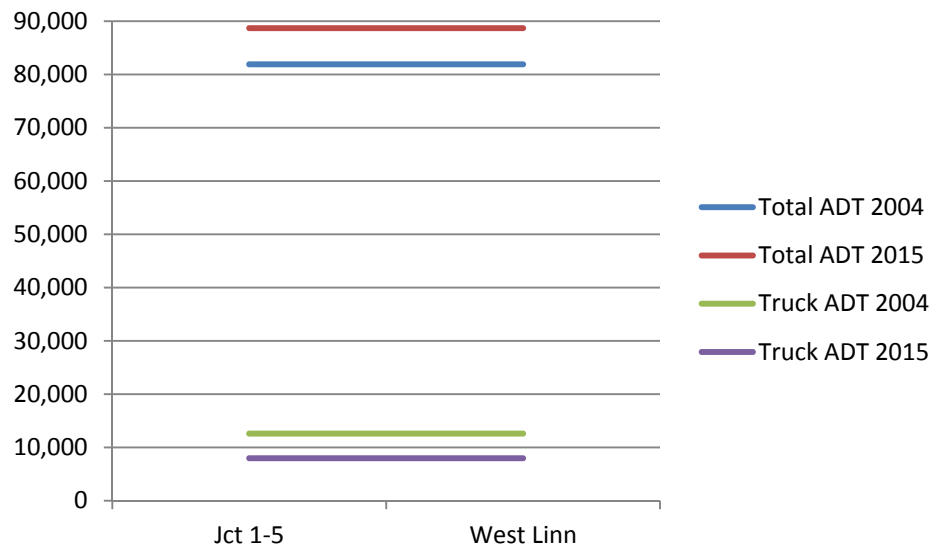
## I-84



# Traffic Volumes on I-205 and I-84

## Average Vehicles per Day

### I-205



### I-84

