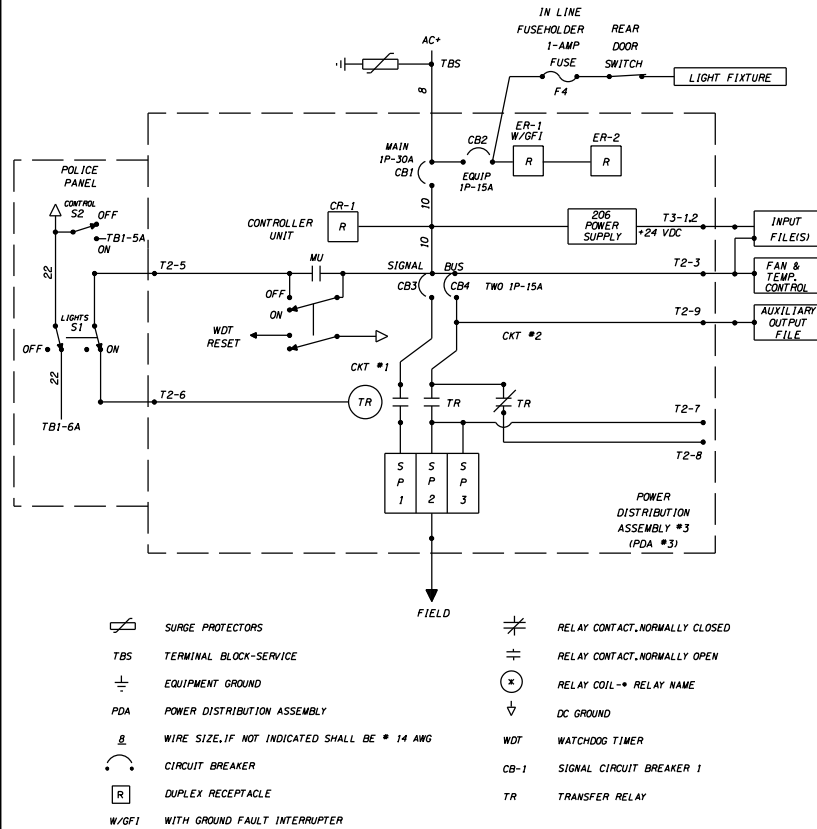
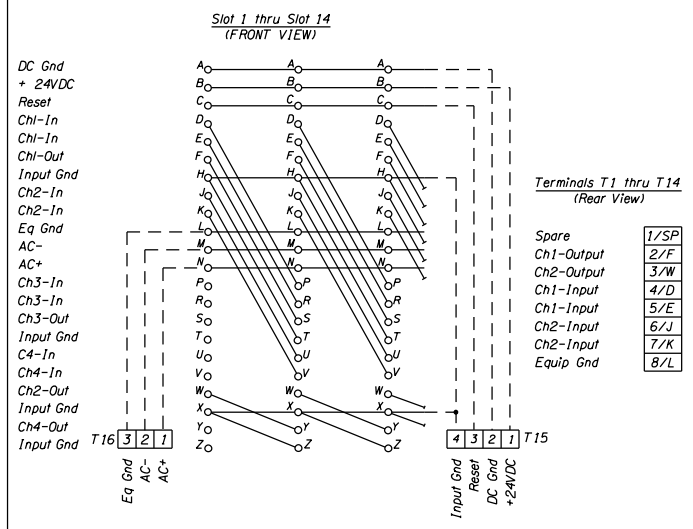


**ONE LINE DIAGRAM**  
Power Distribution Assembly #3

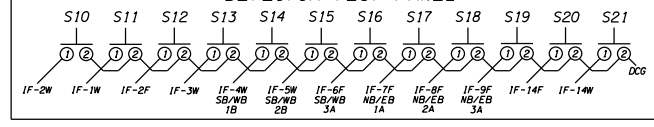


- SURGE PROTECTORS
- TERMINAL BLOCK-SERVICE
- EQUIPMENT GROUND
- PDA POWER DISTRIBUTION ASSEMBLY
- WIRE SIZE, IF NOT INDICATED SHALL BE #14 AWG
- CIRCUIT BREAKER
- DUPLEX RECEPTACLE
- WITH GROUND FAULT INTERRUPTER
- RELAY CONTACT, NORMALLY CLOSED
- RELAY CONTACT, NORMALLY OPEN
- RELAY COIL - RELAY NAME
- DC GROUND
- WDT WATCHDOG TIMER
- CB-1 SIGNAL CIRCUIT BREAKER 1
- TR TRANSFER RELAY

**INPUT FILE - TYPICAL WIRING DETAILS**



**DETECTOR TEST PANEL**



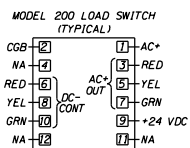
**PROGRAM NUMBER W41KS**

Program Assigned Functions	C1 Connector Pin	Termination	C6 Connector Pin	Switch Pack In Position	Field Term. Out
DC Gnd	1	DC Gnd Bus	-	-	-
-	2	CB-1	1	1-R	3 T4-7
-	3	CB-2	2	1-G	7 T4-9
-	4	CB-3	3	2-R	3 T4-4
-	5	CB-4	4	2-Y	5 T4-5
-	6	CB-5	5	2-G	7 T4-6
-	7	CB-6	6	3-R	3 T4-1
-	8	CB-7	7	3-Y	5 T4-2
-	9	CB-8	8	3-G	7 T4-3
-	10	-	-	-	-
DC Gnd	14	T15-4	-	-	-
-	15	-	-	-	-
-	37	CB-9	9	1-Y	5 T4-8
-	38	-	-	-	-

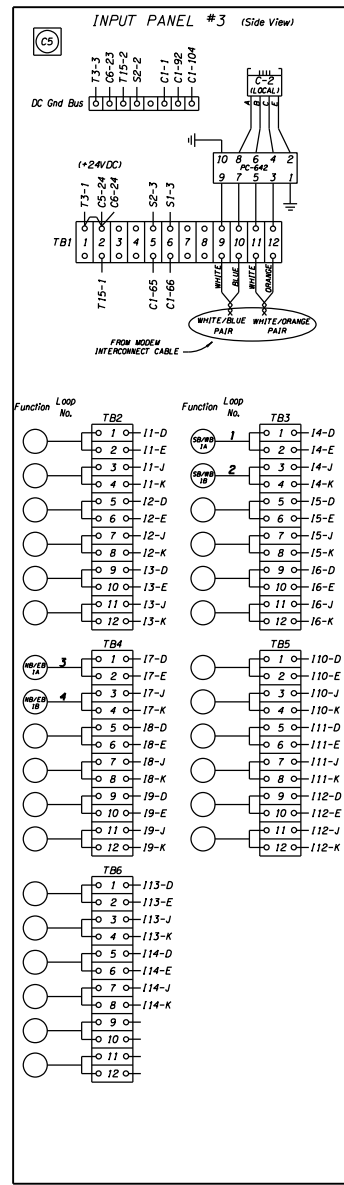
Program Assigned Functions	C1 Connector Pin	Termination	Input File Out	Field Terminals In	Field Terminals
-	39	IF-1W	W J & K	TB2-3B4	-
-	40	IF-12W	W J & K	TB5-11B12	-
-	41	IF-12F	F D & E	TB5-9B10	-
-	42	IF-13W	W J & K	TB5-3B4	-
-	43	IF-13F	F D & E	TB5-1B2	-
-	44	IF-14W	W J & K	TB6-7B8	-
-	45	IF-14F	F D & E	TB6-5B6	-
-	46	IF-1F	F D & E	TB2-1B2	-
-	47	IF-2W	W J & K	TB2-7B8	-
-	48	IF-3W	W J & K	TB2-11B12	-
-	49	IF-3F	F D & E	TB2-9B10	-
-	50	IF-2F	F D & E	TB2-5B6	-
SB/WB 2A	51	IF-5F	F D & E	TB3-5B6	-
SB/WB 2B	52	IF-5W	W J & K	TB3-7B8	-
-	53	IF-11F	F D & E	TB5-5B6	-
-	54	IF-11W	W J & K	TB5-7B8	-
SB/WB 1A	55	IF-4F	F D & E	TB3-1B2	-
SB/WB 1B	56	IF-4W	W J & K	TB3-3B4	-
SB/WB 3A	57	IF-6F	F D & E	TB3-9B10	-
SB/WB 3B	58	IF-6W	W J & K	TB3-11B12	-
NB/EB 1A	59	IF-7F	F D & E	TB4-1B2	-
NB/EB 1B	60	IF-7W	W J & K	TB4-3B4	-
NB/EB 2A	61	IF-8F	F D & E	TB4-5B6	-
NB/EB 2B	62	IF-8W	W J & K	TB4-7B8	-
-	63	IF-13SP	-	-	-
-	64	IF-2SP	-	-	-
-	65	TB1-5B	-	-	-
-	66	TB1-6B	-	-	-
-	67	IF-3SP	-	-	-
-	68	IF-4SP	-	-	-
-	69	IF-5SP	-	-	-
-	70	IF-6SP	-	-	-
-	71	IF-7SP	-	-	-
-	72	IF-8SP	-	-	-
-	73	IF-9SP	-	-	-
-	74	IF-10SP	-	-	-
-	75	IF-11SP	-	-	-
-	76	IF-12SP	-	-	-
-	77	IF-13SP	-	-	-
-	78	IF-14SP	-	-	-
-	79	IF-10F	F D & E	TB5-1B2	-
NB/EB 3A	80	IF-9W	W J & K	TB4-11B12	-
NB/EB 3B	81	IF-9F	F D & E	TB4-9B10	-
-	82	IF-10W	W J & K	TB5-3B4	-

Program Assigned Functions	C1 Connector Pin	Termination	C5 Connector Pin	Switch Pack In Position	Field Term. Out
-	83	CS-1	1	6 A6-DW	3 A104
-	84	CS-2	2	10 A6-W	7 A106
-	85	CS-3	3	6 A5-R	3 A101
-	86	CS-4	4	8 A5-Y	5 A102
-	87	CS-5	5	10 A5-G	7 A103
-	88	CS-6	6	6 A4-R	3 A114
-	89	CS-7	7	8 A4-Y	5 A115
-	90	CS-8	8	10 A4-G	7 A116
-	91	CS-9	9	6 A3-DW	3 A111
DC Gnd	92	DC Gnd Bus	-	-	-
-	93	CS-10	10	10 A3-W	7 A113
-	94	CS-11	11	6 A2-R	3 A124
-	95	CS-12	12	8 A2-Y	5 A125
-	96	CS-13	13	10 A2-G	7 A126
-	97	CS-14	14	6 A1-R	3 A121
-	98	CS-15	15	8 A1-Y	5 A122
-	99	CS-16	16	10 A1-G	7 A123
-	100	CS-17	17	8 A6-Y	5 A105
-	101	CS-18	18	8 A3-Y	5 A112

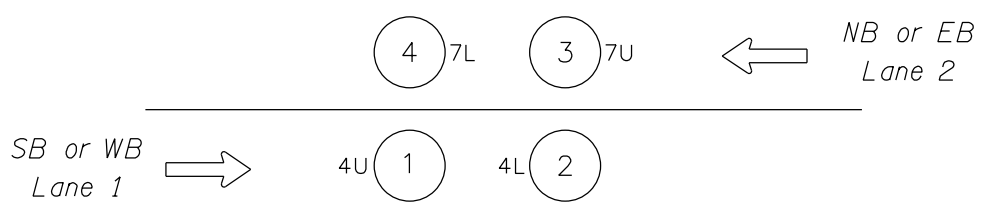
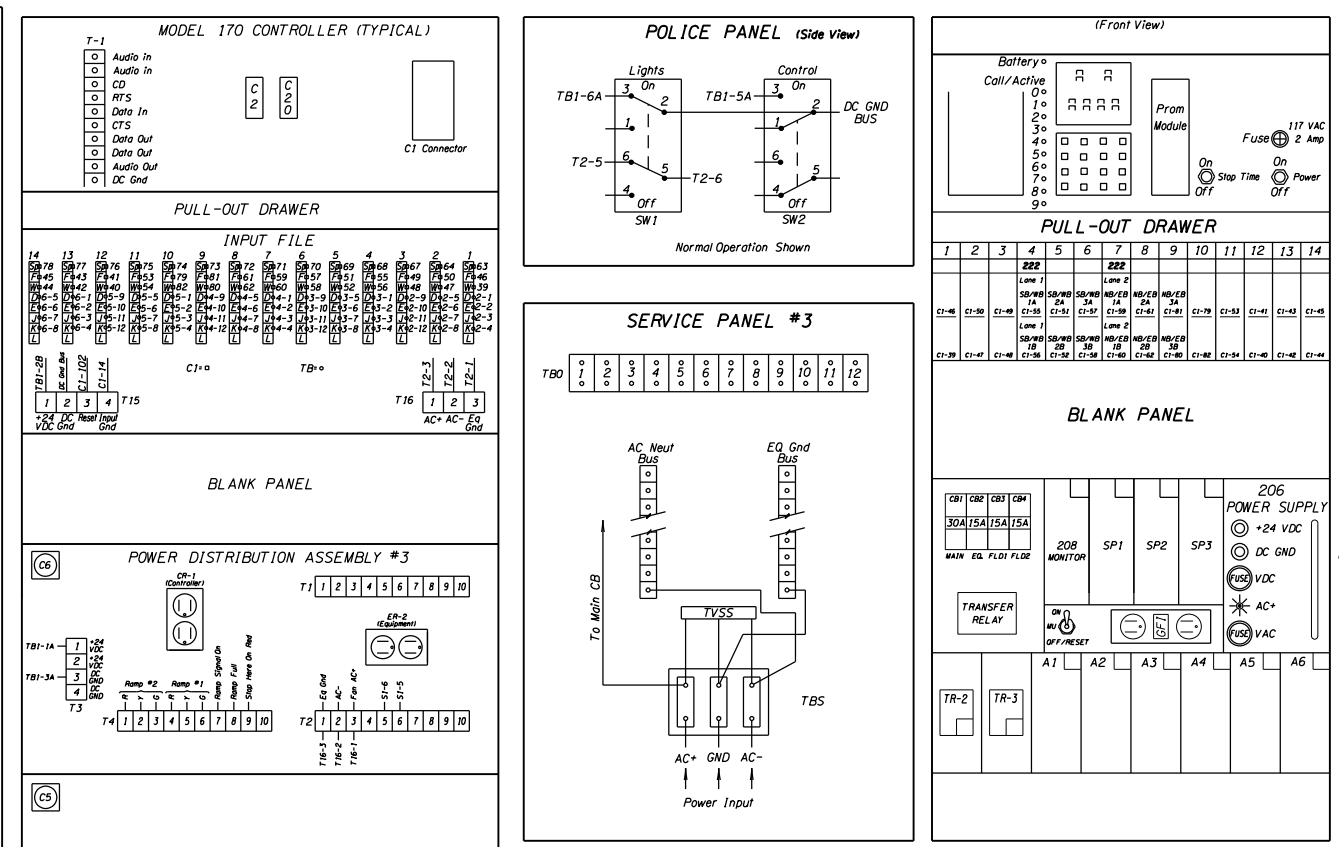
-	102	T15-3	-	-	-
Watchdog	103	CS-10	20B Monitor-Pin 5	-	-
DC Gnd	104	DC Gnd Bus	-	-	-



**GENERAL**



**CABINET LAYOUT**



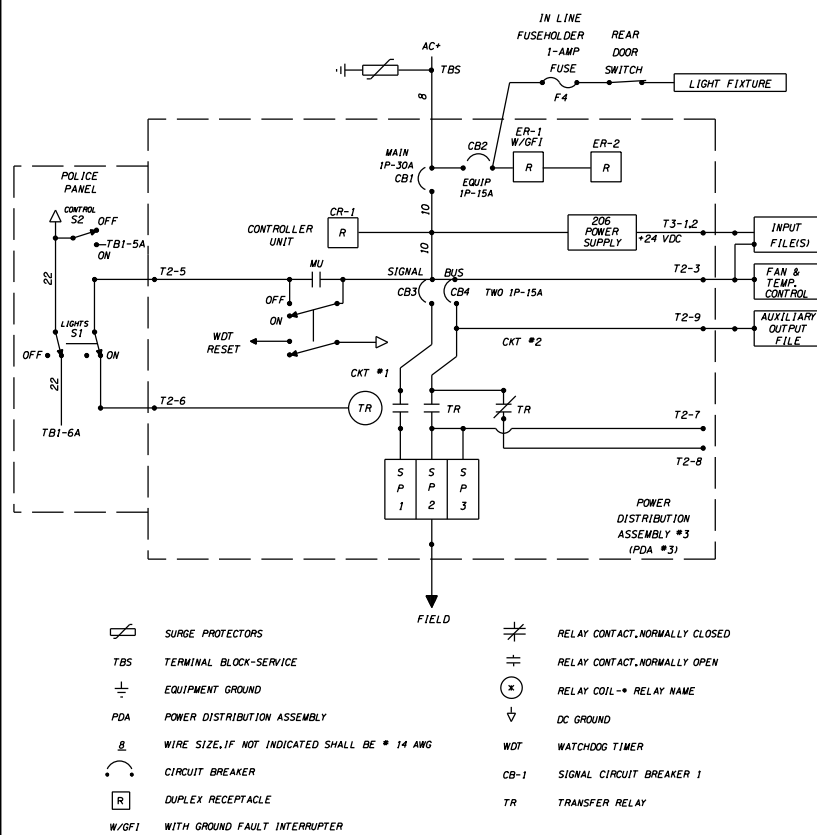
- General Notes:**
- Lane 1 always starts WB or SB
  - Lane numbering starts at outside lane WB or SB continuing in sequence to outside lane in other direction
  - Leading loops are odd numbers and trailing loops are even numbers

RETURN CORRECTED PRINT TO TRAFFIC MANAGEMENT SECTION SIGNAL DESIGN

FIELD REVIEWED BY: \_\_\_\_\_

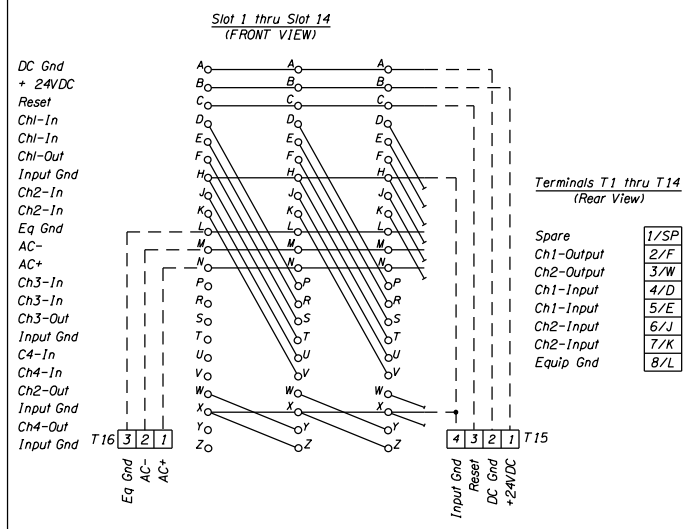
OREGON DEPARTMENT OF TRANSPORTATION  
 TRAFFIC ENGINEERING AND OPERATIONS SECTION  
 334 ATR CABINET WIRING DIAGRAM  
 REV. 2/2/08  
 INTERSECTION: \_\_\_\_\_  
 DRAWING: \_\_\_\_\_  
 REV. NO. DATE INITIAL

**ONE LINE DIAGRAM**  
Power Distribution Assembly #3

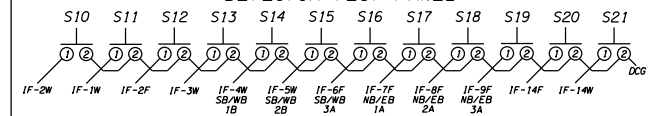


- SURGE PROTECTORS
- TERMINAL BLOCK-SERVICE
- EQUIPMENT GROUND
- PDA POWER DISTRIBUTION ASSEMBLY
- WIRE SIZE, IF NOT INDICATED SHALL BE #14 AWG
- CIRCUIT BREAKER
- DUPLEX RECEPTACLE
- WITH GROUND FAULT INTERRUPTER
- RELAY CONTACT, NORMALLY CLOSED
- RELAY CONTACT, NORMALLY OPEN
- RELAY COIL - RELAY NAME
- DC GROUND
- WATCHDOG TIMER
- SIGNAL CIRCUIT BREAKER 1
- TRANSFER RELAY

**INPUT FILE - TYPICAL WIRING DETAILS**



**DETECTOR TEST PANEL**



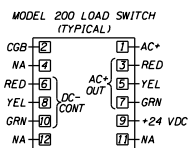
**PROGRAM NUMBER WAIKS**

Program Assigned Functions	C1 Connector Pin	Termination	C6 Connector Pin	Switch Pack In Position	Field Term. Out
DC Gnd	1	DC Gnd Bus	-	-	-
-	2	CB-1	1	1-R	3 T4-7
-	3	CB-2	2	1-G	7 T4-9
-	4	CB-3	3	2-R	3 T4-4
-	5	CB-4	4	2-Y	5 T4-5
-	6	CB-5	5	2-G	7 T4-6
-	7	CB-6	6	3-R	3 T4-1
-	8	CB-7	7	3-Y	5 T4-2
-	9	CB-8	8	3-G	7 T4-3
-	10	-	-	-	-
DC Gnd	14	T15-4	-	-	-
-	15	-	-	-	-
-	37	CB-9	9	1-Y	5 T4-8
-	38	-	-	-	-

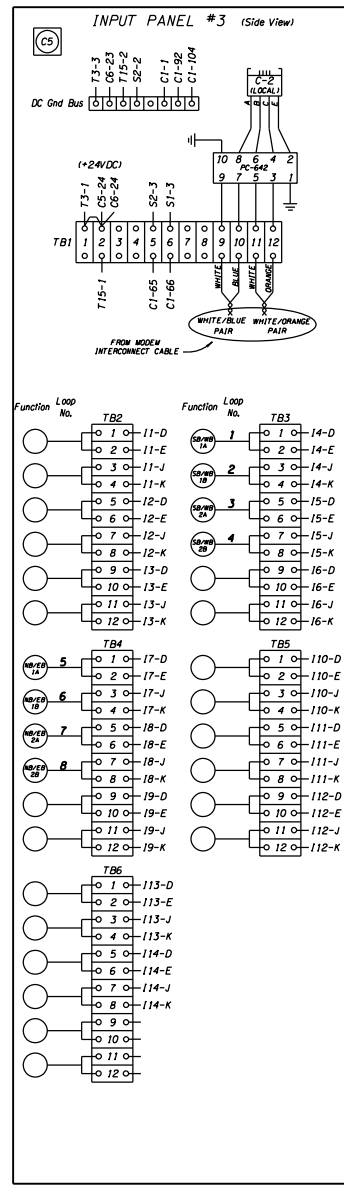
Program Assigned Functions	C1 Connector Pin	Termination	Input File Out	Field Terminals
-	39	IF-1W	W J & K	TB2-3B4
-	40	IF-12W	W J & K	TB5-11B12
-	41	IF-12F	F D & E	TB5-9B10
-	42	IF-13W	W J & K	TB6-3B4
-	43	IF-13F	F D & E	TB6-1B2
-	44	IF-14W	W J & K	TB6-7B8
-	45	IF-14F	F D & E	TB6-5B6
-	46	IF-1F	F D & E	TB2-1B2
-	47	IF-2W	W J & K	TB2-7B8
-	48	IF-3W	W J & K	TB2-11B12
-	49	IF-3F	F D & E	TB2-9B10
-	50	IF-2F	F D & E	TB2-5B6
SB/WB 2A	51	IF-5F	F D & E	TB3-5B6
SB/WB 2B	52	IF-5W	W J & K	TB3-7B8
-	53	IF-11F	F D & E	TB5-5B6
-	54	IF-11W	W J & K	TB5-7B8
SB/WB 1A	55	IF-4F	F D & E	TB3-1B2
SB/WB 1B	56	IF-4W	W J & K	TB3-3B4
SB/WB 3A	57	IF-6F	F D & E	TB3-9B10
SB/WB 3B	58	IF-6W	W J & K	TB3-11B12
NB/EB 1A	59	IF-7F	F D & E	TB4-1B2
NB/EB 1B	60	IF-7W	W J & K	TB4-3B4
NB/EB 2A	61	IF-8F	F D & E	TB4-5B6
NB/EB 2B	62	IF-8W	W J & K	TB4-7B8
-	63	IF-13SP	-	-
-	64	IF-2SP	-	-
-	65	TB1-5B	-	-
-	66	TB1-6B	-	-
-	67	IF-3SP	-	-
-	68	IF-4SP	-	-
-	69	IF-5SP	-	-
-	70	IF-6SP	-	-
-	71	IF-7SP	-	-
-	72	IF-8SP	-	-
-	73	IF-9SP	-	-
-	74	IF-10SP	-	-
-	75	IF-11SP	-	-
-	76	IF-12SP	-	-
-	77	IF-13SP	-	-
-	78	IF-14SP	-	-
-	79	IF-10F	F D & E	TB5-1B2
NB/EB 3A	80	IF-9W	W J & K	TB4-11B12
NB/EB 3B	81	IF-9F	F D & E	TB4-9B10
-	82	IF-10W	W J & K	TB5-3B4

Program Assigned Functions	C1 Connector Pin	Termination	C5 Connector Pin	Switch Pack In Position	Field Term. Out
-	83	C5-1	1	6 A6-DW	3 A104
-	84	C5-2	2	10 A6-W	7 A106
-	85	C5-3	3	6 A5-R	3 A101
-	86	C5-4	4	8 A5-Y	5 A102
-	87	C5-5	5	10 A5-G	7 A103
-	88	C5-6	6	6 A4-R	3 A114
-	89	C5-7	7	8 A4-Y	5 A115
-	90	C5-8	8	10 A4-G	7 A116
-	91	C5-9	9	6 A3-DW	3 A111
DC Gnd	92	DC Gnd Bus	-	-	-
-	93	-	10	10 A3-W	7 A113
-	94	C5-11	11	6 A2-R	3 A124
-	95	C5-12	12	8 A2-Y	5 A125
-	96	C5-13	13	10 A2-G	7 A126
-	97	C5-14	14	6 A1-R	3 A121
-	98	C5-15	15	8 A1-Y	5 A122
-	99	C5-16	16	10 A1-G	7 A123
-	100	C5-17	17	8 A6-Y	5 A105
-	101	C5-18	18	8 A3-Y	5 A112

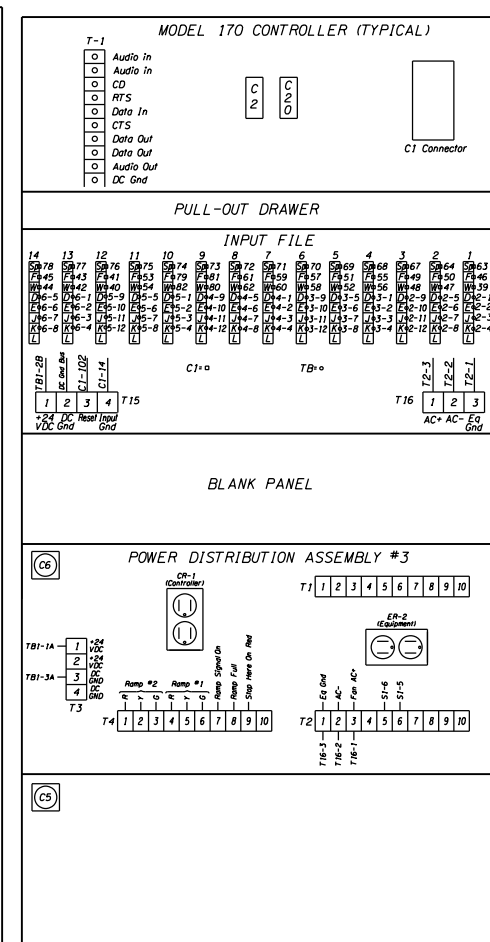
-	102	T15-3	-	-	-
Watchdog	103	C6-10	20B Monitor-Pin 5	-	-
DC Gnd	104	DC Gnd Bus	-	-	-



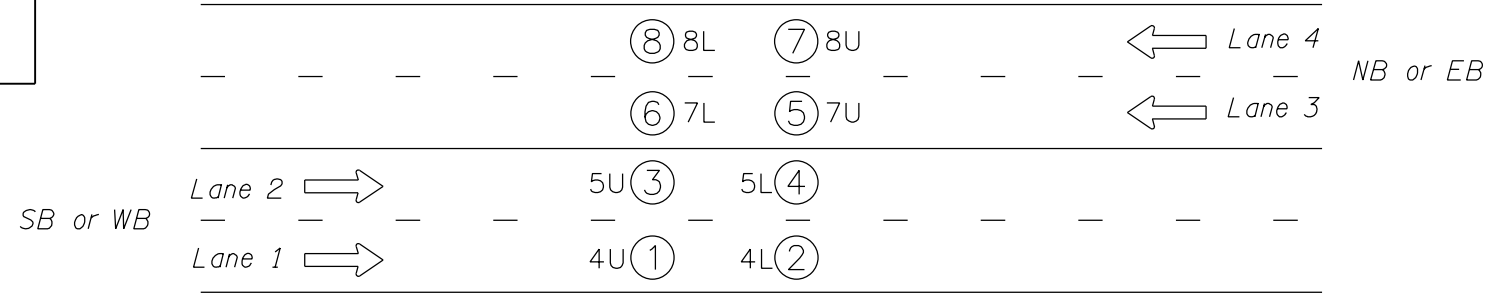
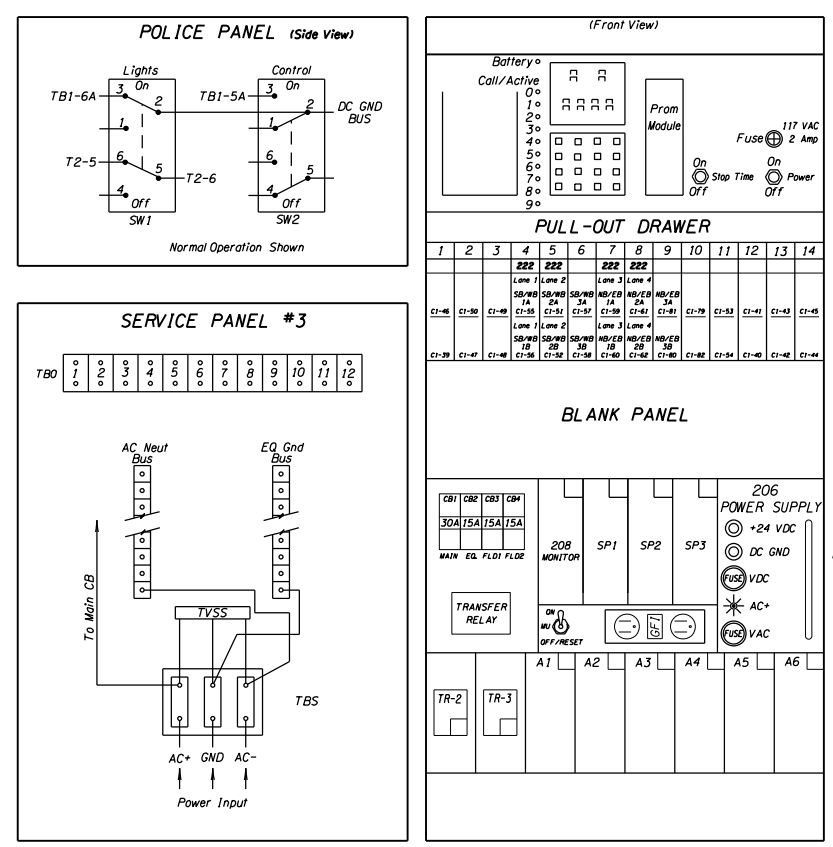
**GENERAL**



**CABINET REAR VIEW (TYPICAL)**



**LAYOUT**

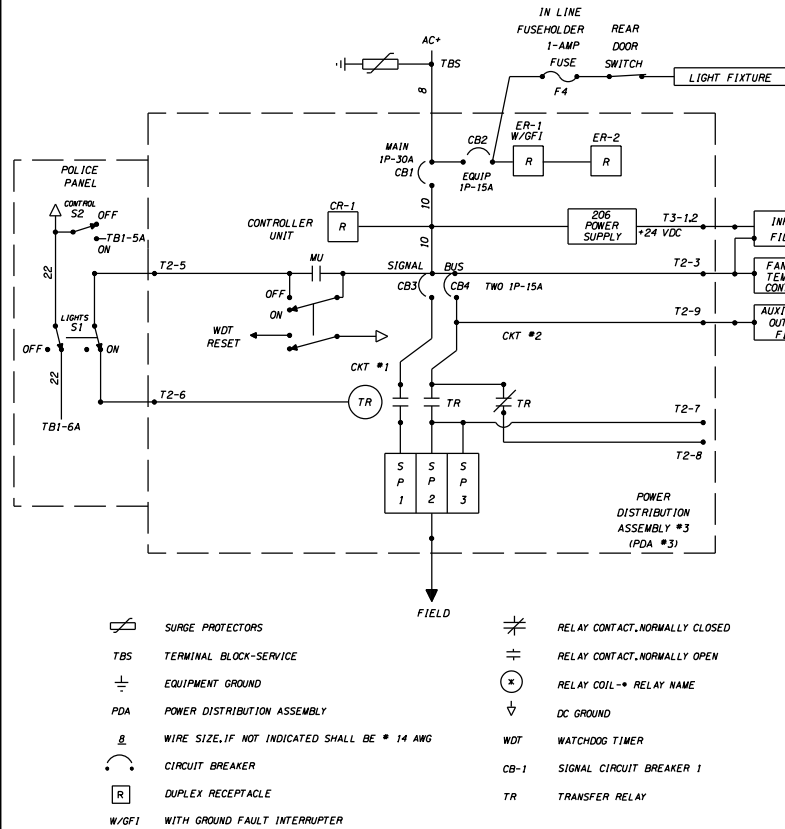


- General Notes:**
- Lane 1 always starts WB or SB
  - Lane numbering starts at outside lane WB or SB continuing in sequence to outside lane in other direction
  - Leading loops are odd numbers and trailing loops are even numbers

RETURN CORRECTED PRINT TO TRAFFIC MANAGEMENT SECTION SIGNAL DESIGN

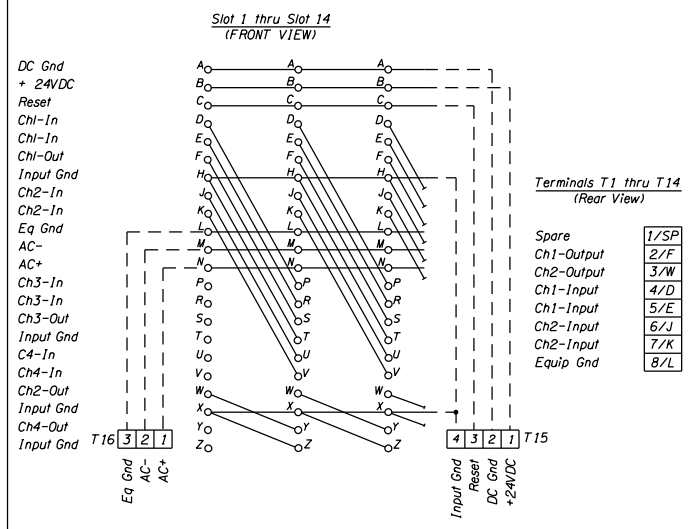
FIELD REVIEWED BY: \_\_\_\_\_

**ONE LINE DIAGRAM**  
Power Distribution Assembly #3

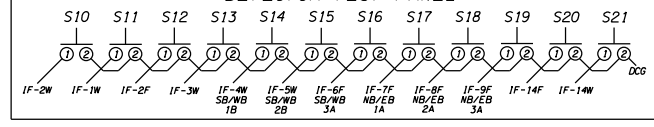


- SURGE PROTECTORS
- TERMINAL BLOCK-SERVICE
- EQUIPMENT GROUND
- PDA
- WIRE SIZE, IF NOT INDICATED SHALL BE #14 AWG
- CIRCUIT BREAKER
- DUPLEX RECEPTACLE
- WITH GROUND FAULT INTERRUPTER
- RELAY CONTACT, NORMALLY CLOSED
- RELAY CONTACT, NORMALLY OPEN
- RELAY COIL - RELAY NAME
- DC GROUND
- WDT WATCHDOG TIMER
- CB-1 SIGNAL CIRCUIT BREAKER 1
- TR TRANSFER RELAY

**INPUT FILE - TYPICAL WIRING DETAILS**



**DETECTOR TEST PANEL**

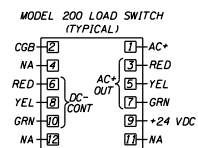


**PROGRAM NUMBER W4IKS**

Program Assigned Functions	C1 Connector Pin	Termination	C6 Connector Pin	Switch Pack In Position	Field Term. Out
DC Gnd	1	DC Gnd Bus	-	-	-
-	2	CE-1	1	1-R	3 T4-7
-	3	CE-2	2	1-G	7 T4-9
-	4	CE-3	3	2-R	3 T4-4
-	5	CE-4	4	2-Y	5 T4-5
-	6	CE-5	5	2-G	7 T4-6
-	7	CE-6	6	3-R	3 T4-1
-	8	CE-7	7	3-Y	5 T4-2
-	9	CE-8	8	3-G	7 T4-3
-	10	-	-	-	-
DC Gnd	14	T15-4	-	-	-
-	15	-	-	-	-
-	37	CE-9	9	1-Y	5 T4-8
-	38	-	-	-	-

Program Assigned Functions	C1 Connector Pin	Termination	Input File Out	Field Terminals
-	39	IF-1W	W J & K	TB2-3B4
-	40	IF-12W	W J & K	TB5-11B12
-	41	IF-12F	F D & E	TB5-9B10
-	42	IF-13W	W J & K	TB6-3B4
-	43	IF-13F	F D & E	TB6-1B2
-	44	IF-14W	W J & K	TB6-7B8
-	45	IF-14F	F D & E	TB6-5B6
-	46	IF-1F	F D & E	TB2-1B2
-	47	IF-2W	W J & K	TB2-7B8
-	48	IF-3W	W J & K	TB2-11B12
-	49	IF-3F	F D & E	TB2-9B10
-	50	IF-2F	F D & E	TB2-5B6
-	51	IF-5F	F D & E	TB3-5B6
SB/WB 2A	52	IF-5W	W J & K	TB3-7B8
-	53	IF-11F	F D & E	TB5-5B6
-	54	IF-11W	W J & K	TB5-7B8
SB/WB 1A	55	IF-4F	F D & E	TB3-1B2
SB/WB 1B	56	IF-4W	W J & K	TB3-3B4
SB/WB 3A	57	IF-6F	F D & E	TB3-9B10
SB/WB 3B	58	IF-6W	W J & K	TB3-11B12
NB/EB 1A	59	IF-7F	F D & E	TB4-1B2
NB/EB 1B	60	IF-7W	W J & K	TB4-3B4
NB/EB 2A	61	IF-8F	F D & E	TB4-5B6
NB/EB 2B	62	IF-8W	W J & K	TB4-7B8
-	63	IF-13SP	-	-
-	64	IF-2SP	-	-
-	65	TB1-5B	-	-
-	66	TB1-6B	-	-
-	67	IF-3SP	-	-
-	68	IF-4SP	-	-
-	69	IF-5SP	-	-
-	70	IF-6SP	-	-
-	71	IF-7SP	-	-
-	72	IF-8SP	-	-
-	73	IF-9SP	-	-
-	74	IF-10SP	-	-
-	75	IF-11SP	-	-
-	76	IF-12SP	-	-
-	77	IF-13SP	-	-
-	78	IF-14SP	-	-
-	79	IF-10F	F D & E	TB5-1B2
NB/EB 3A	80	IF-9W	W J & K	TB4-11B12
NB/EB 3B	81	IF-9F	F D & E	TB4-9B10
-	82	IF-10W	W J & K	TB5-3B4

Program Assigned Functions	C1 Connector Pin	Termination	C5 Connector Pin	Switch Pack In Position	Field Term. Out
-	83	C5-1	1	6 A6-DW	3 A104
-	84	C5-2	2	10 A6-W	7 A106
-	85	C5-3	3	6 A5-R	3 A101
-	86	C5-4	4	8 A5-Y	5 A102
-	87	C5-5	5	10 A5-G	7 A103
-	88	C5-6	6	6 A4-R	3 A114
-	89	C5-7	7	8 A4-Y	5 A115
-	90	C5-8	8	10 A4-G	7 A116
-	91	C5-9	9	6 A3-DW	3 A111
DC Gnd	92	DC Gnd Bus	-	-	-
-	93	C5-10	10	10 A3-W	7 A113
-	94	C5-11	11	6 A2-R	3 A124
-	95	C5-12	12	8 A2-Y	5 A125
-	96	C5-13	13	10 A2-G	7 A126
-	97	C5-14	14	6 A1-R	3 A121
-	98	C5-15	15	8 A1-Y	5 A122
-	99	C5-16	16	10 A1-G	7 A123
-	100	C5-17	17	8 A6-Y	5 A105
-	101	C5-18	18	8 A3-Y	5 A112
-	102	T15-3	-	-	-
Watchdog	103	C6-10	-	-	20B Monitor-Pin 5
DC Gnd	104	DC Gnd Bus	-	-	-



**GENERAL**

