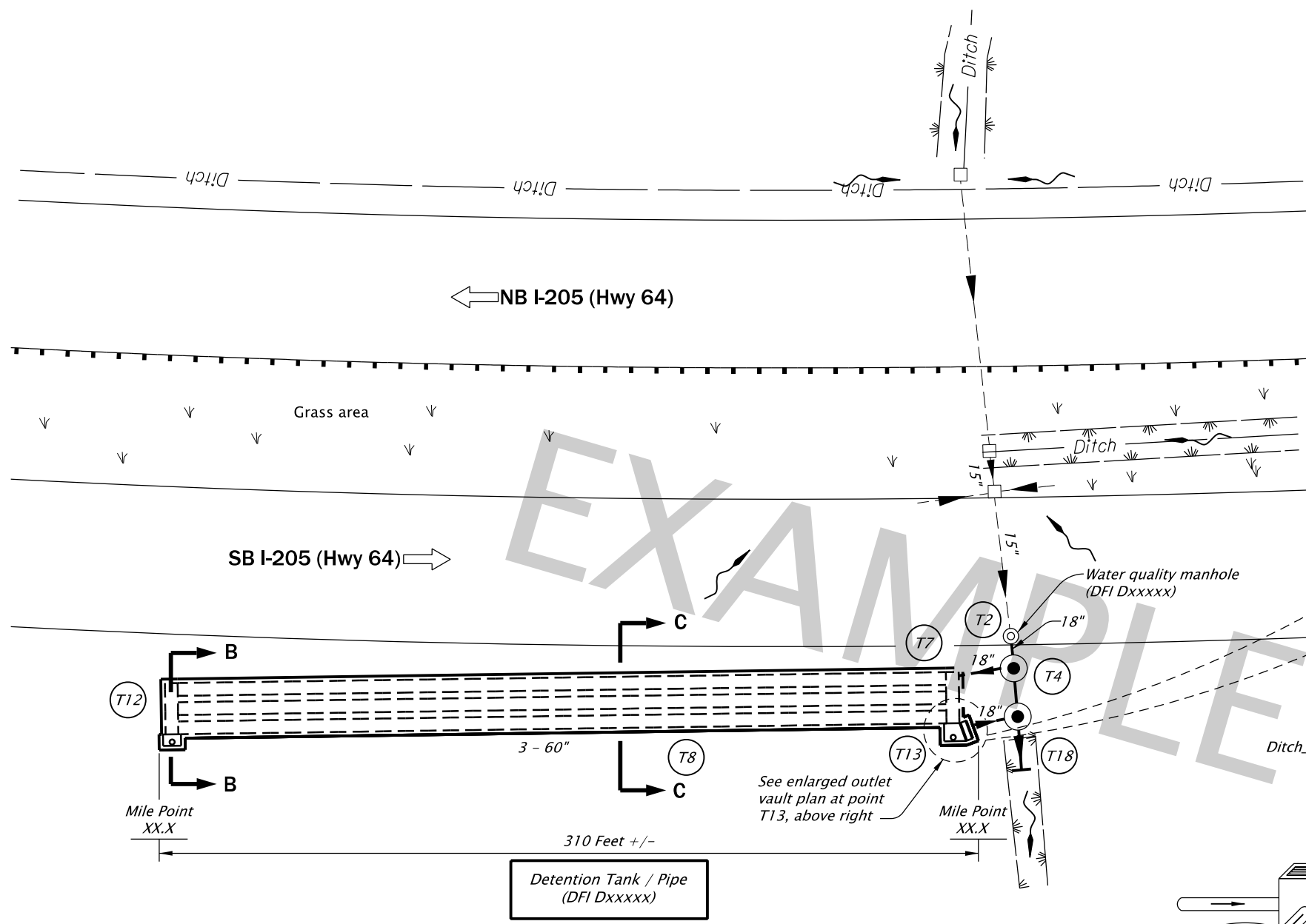
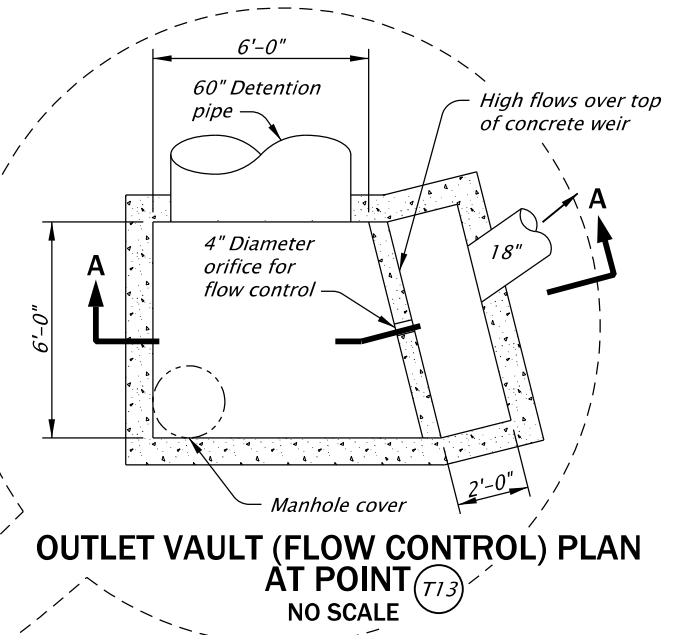


APPENDIX A:

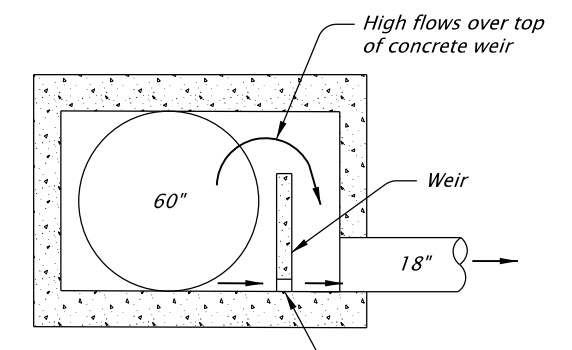
Three example operational plans of the most common *stormwater facility types* are located here in Appendix A. Other examples can be viewed on the [Geo-Environmental Drafting webpage](#).



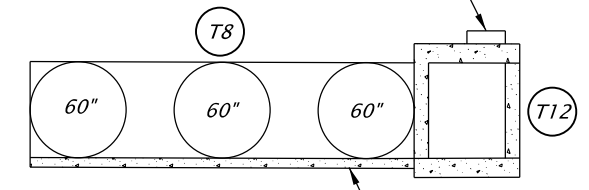
PLAN
NO SCALE



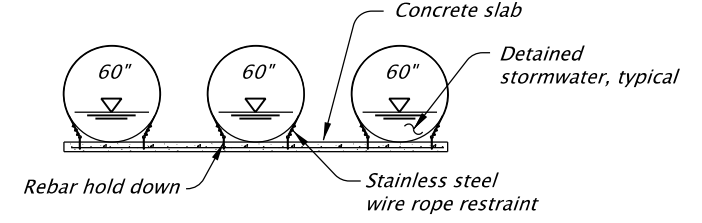
OUTLET VAULT (FLOW CONTROL) PLAN
AT POINT T13
NO SCALE



SECTION A-A
NO SCALE



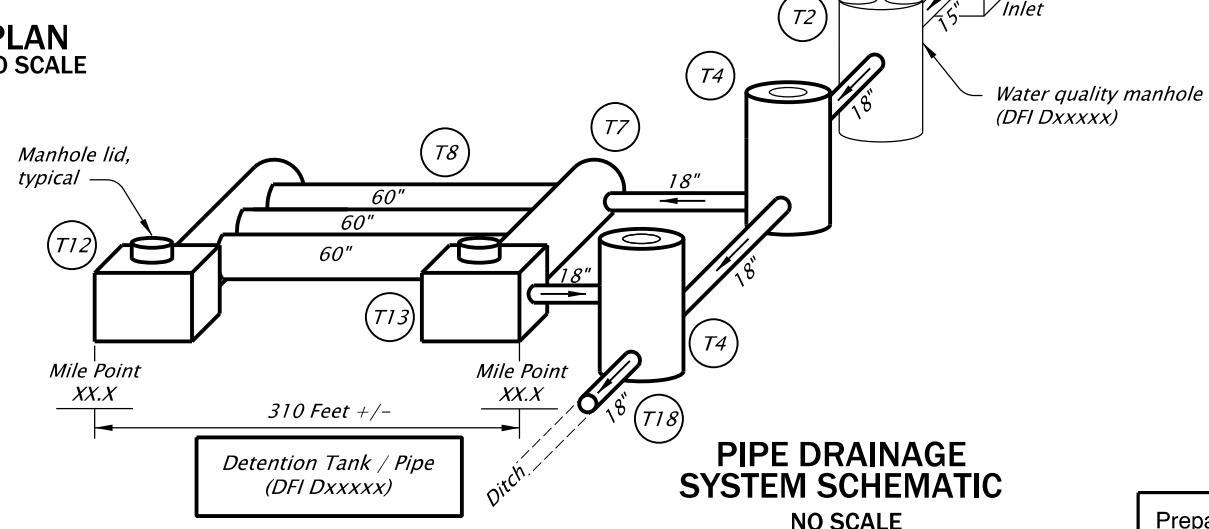
SECTION B-B
NO SCALE



SECTION C-C
NO SCALE

LEGEND:

- and ○ Manhole
- and □ Inlet
- Storm pipe (facility)
- Storm pipe
- ← Conveyance direction
- ~ Pavement / facility flow path
- ← Traffic flow direction
- T2 Water quality manhole
- T4 Flow control manhole
- T7 Inlet to detention pipe
- T8 Detention pipes
- T12 Inlet vault for access
- T13 Outlet vault (flow control)
- T18 Outfall to ditch



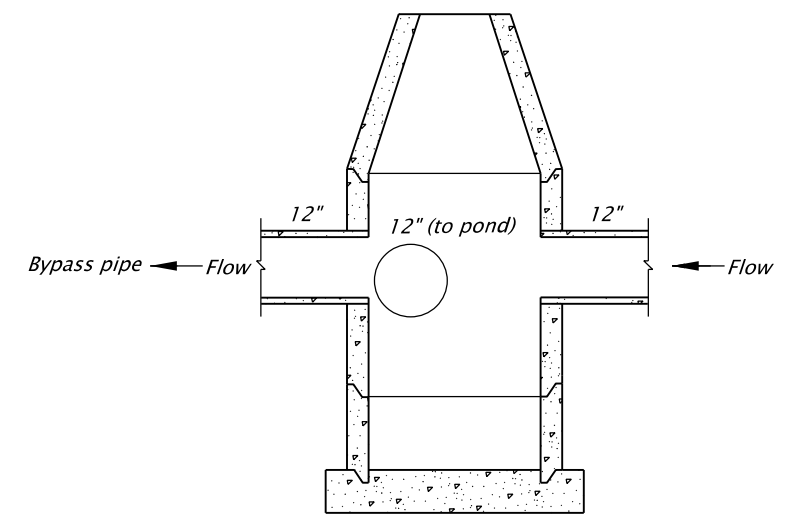
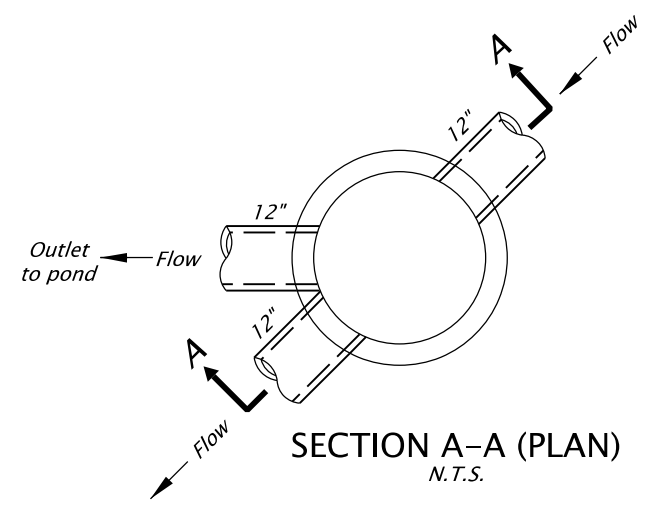
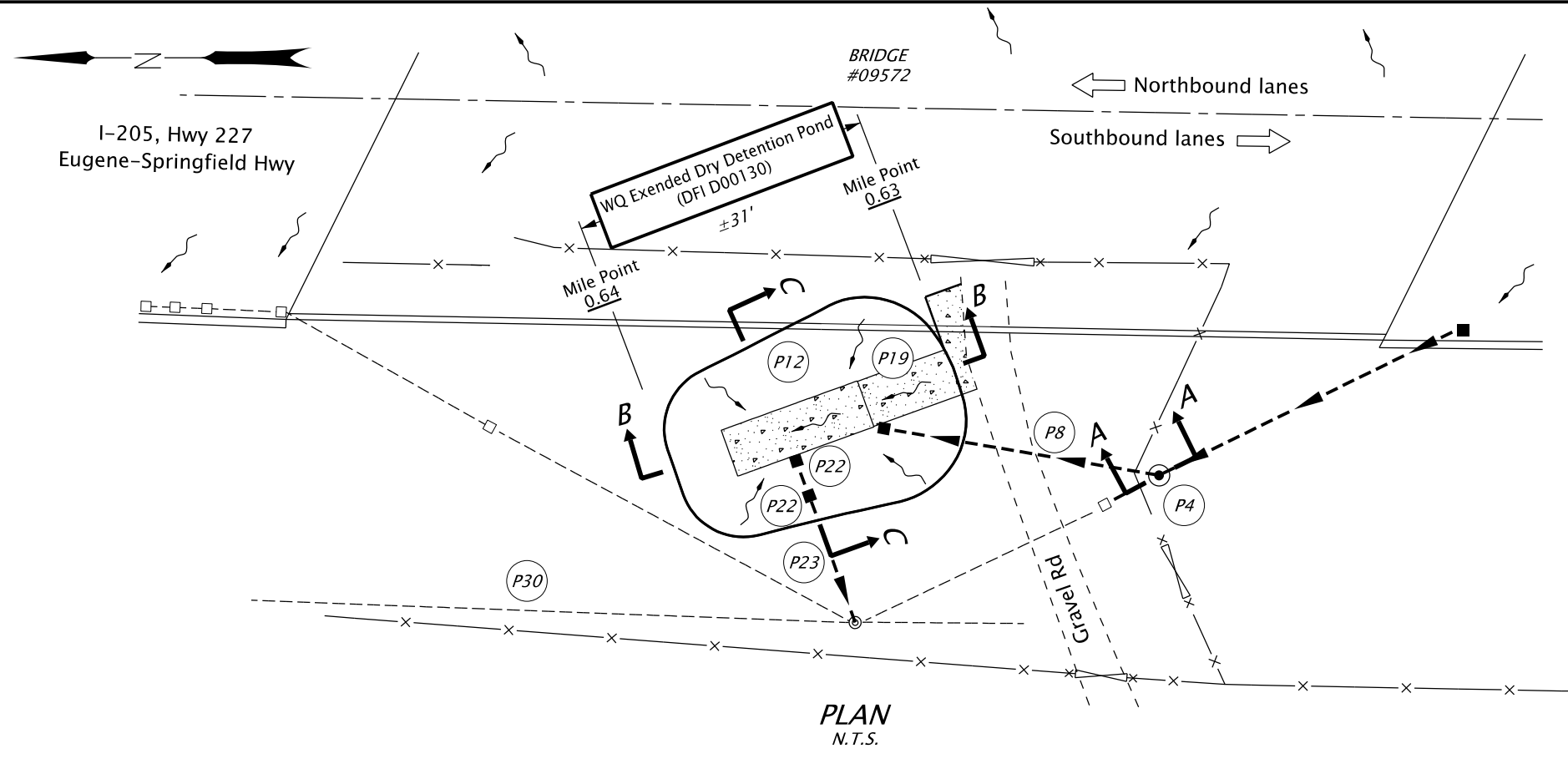
PIPE DRAINAGE SYSTEM SCHEMATIC
NO SCALE

Sht. 1 of 1

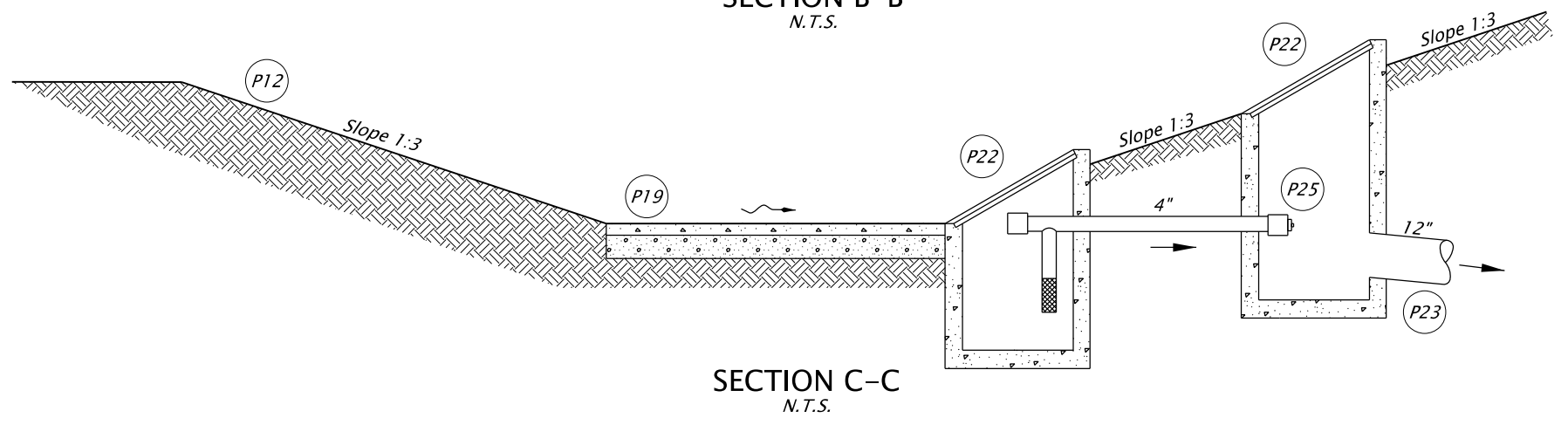
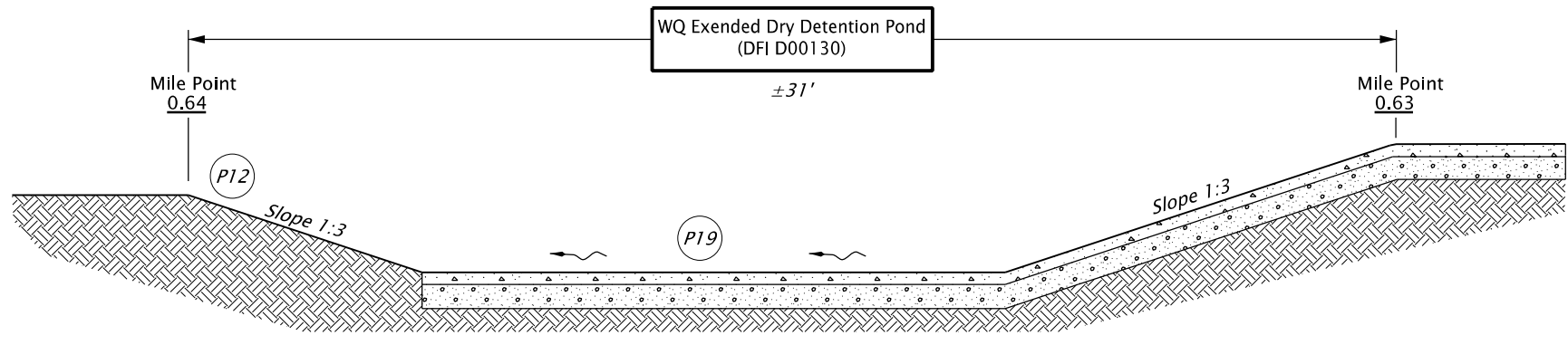
OREGON DEPARTMENT OF TRANSPORTATION

Prepared By: _____
Drafted By: _____

DFI DXXXX
MAINTENANCE DISTRICT XX HWY XXX
DETENTION TANK/PIPE
HIGHWAY NAME MP XXX.XX
COUNTY NAME



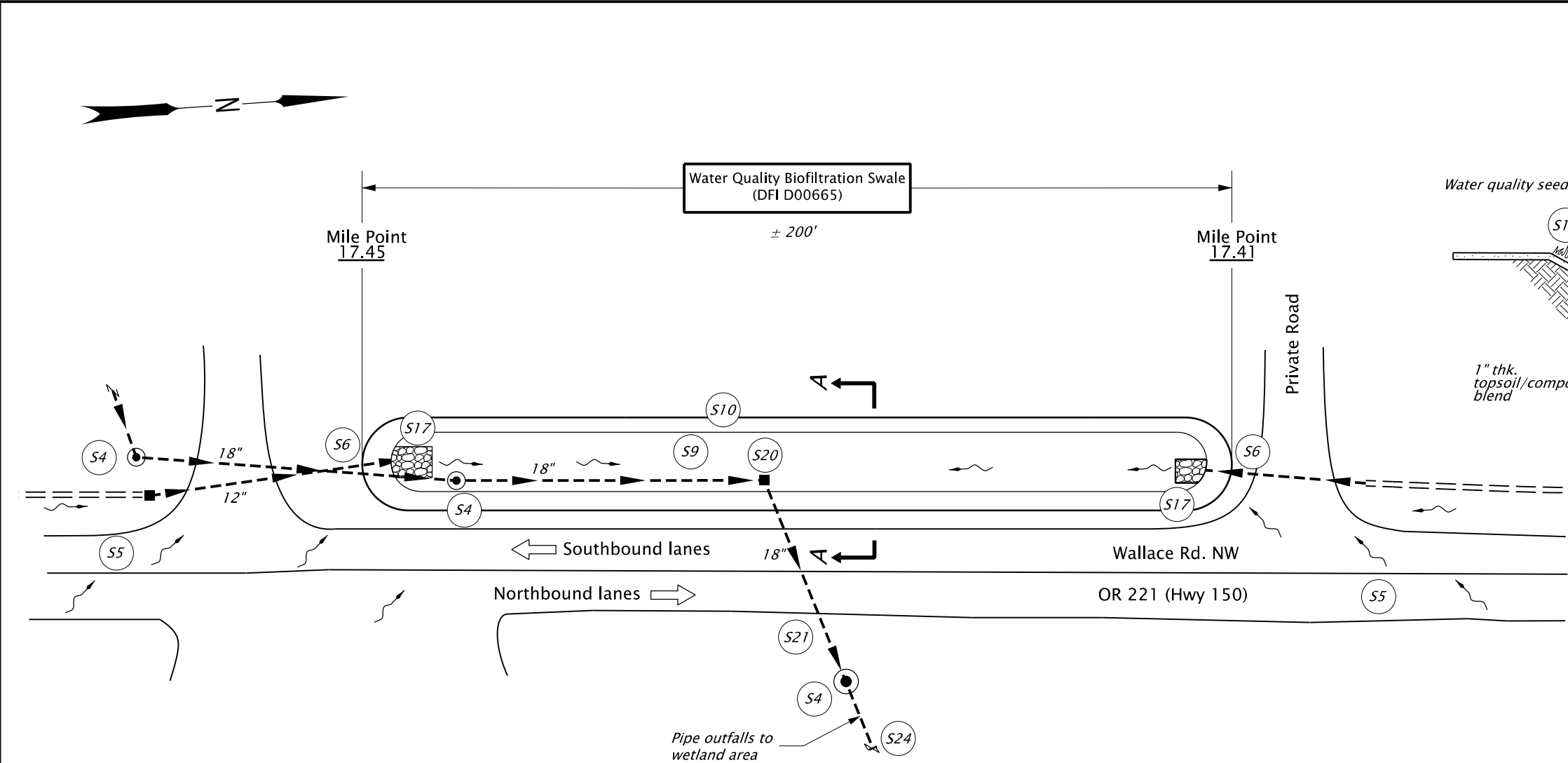
- LEGEND:**
- P# Facility Component (see table 1 in O&M Manual)
 - and ⊙ Manhole
 - and Inlet
 - Storm Pipe (Facility)
 - Storm Pipe
 - Conveyance Direction
 - Pavement / Facility Flow Path
 - Traffic Flow Direction



Prepared By:
Scott Sooter

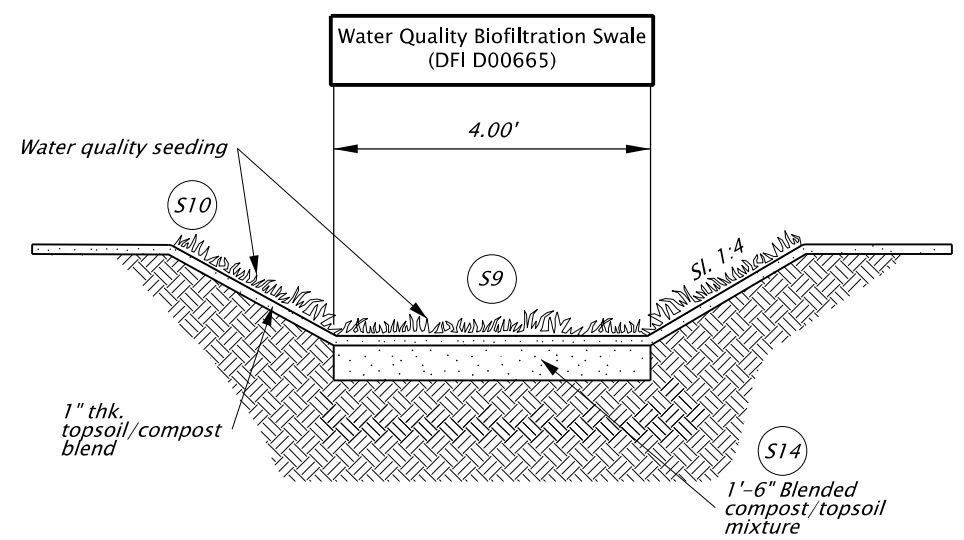
Drafted By:
Ian Kintz-Stormo

DFI D00130
MAINTENANCE DISTRICT 5 HWY 227
WQ EXTENDED DRY DETENTION POND
HIGHWAY MP 0.63-0.64
LANE COUNTY

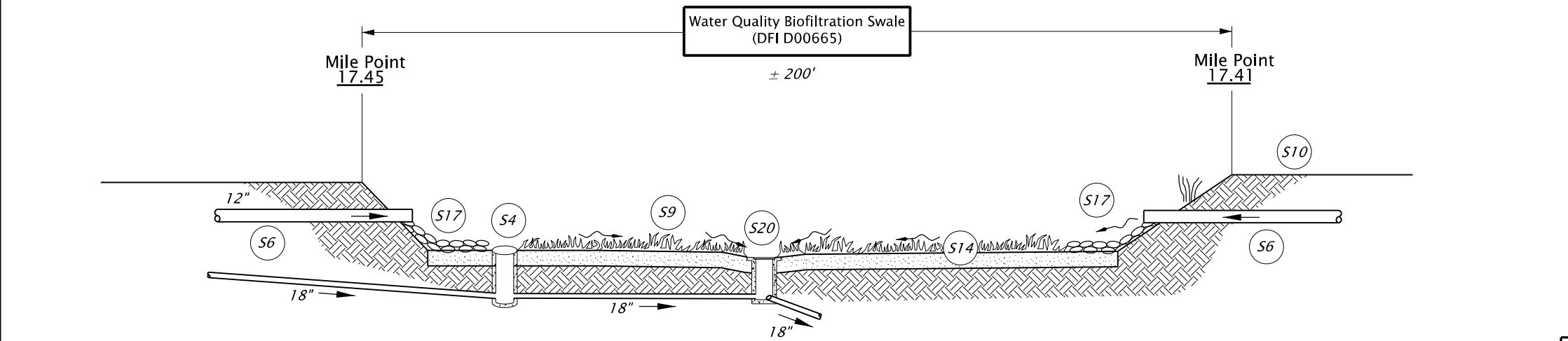


PLAN
N.T.S.

- LEGEND:**
- S# Swale Component (see table 1 in O&M Manual)
 - Manhole
 - Inlet
 - Storm Pipe (Facility)
 - Conveyance Direction
 - Pavement / Facility Flow Path
 - Highway Lane Direction



SECTION A-A
N.T.S.



PROFILE
N.T.S.



DFI D00665
MAINTENANCE DISTRICT 03 HWY 150
WATER QUALITY BIOFILTRATION SWALE
SALEM-DAYTON HIGHWAY MP 17.41-17.45
POLK COUNTY

Prepared By:
Shreya Jain

Drafted By:
Chabell Arreola

APPENDIX B:

ODOT's engineering workspace contains the seed file, for use in developing stormwater operational plans.

Internal users: [seed_OM.dgn](#)

External users: [ODOT Workspace & Updates](#)