

# ACEC | ODOT

## 2025 Partnering

## Conference

Salem

Convention

Center

May 13, 2025



Presented in partnership by





# Welcome

On behalf of the Oregon Department of Transportation and the American Council of Engineering Companies of Oregon, it is our privilege to welcome you to the 2025 ACEC|ODOT Partnering Conference.

We are happy to welcome you to connect with friends both old and new. This year's conference will provide the perfect opportunity to both celebrate what we have already accomplished and consider ways we can further empower the partnership between ODOT and ACEC members.

We will focus on how we can better depend on each other as partners by removing roadblocks, improving communication, leveraging technology, and navigating rapid change. Whether it's during our presentations or through impromptu networking during snack breaks, we expect several opportunities for new or renewed connections to arise.

We are pleased to offer a range of topics and perspectives, including:

- Updates on the state of the industry from Oregon's transportation leaders.
- A variety of relevant and interesting breakout sessions throughout the afternoon with focuses on innovative projects, new tools, and new processes.

You are also encouraged to visit the display tables located in the foyer of the second floor. Our exhibitors are listed on the back cover.

We welcome your perspective, your experience, and your ideas during today's conference (and beyond). Please enjoy the conference and this opportunity to network and learn from each other.

**Thank you for joining  
us this year!**

Welcome

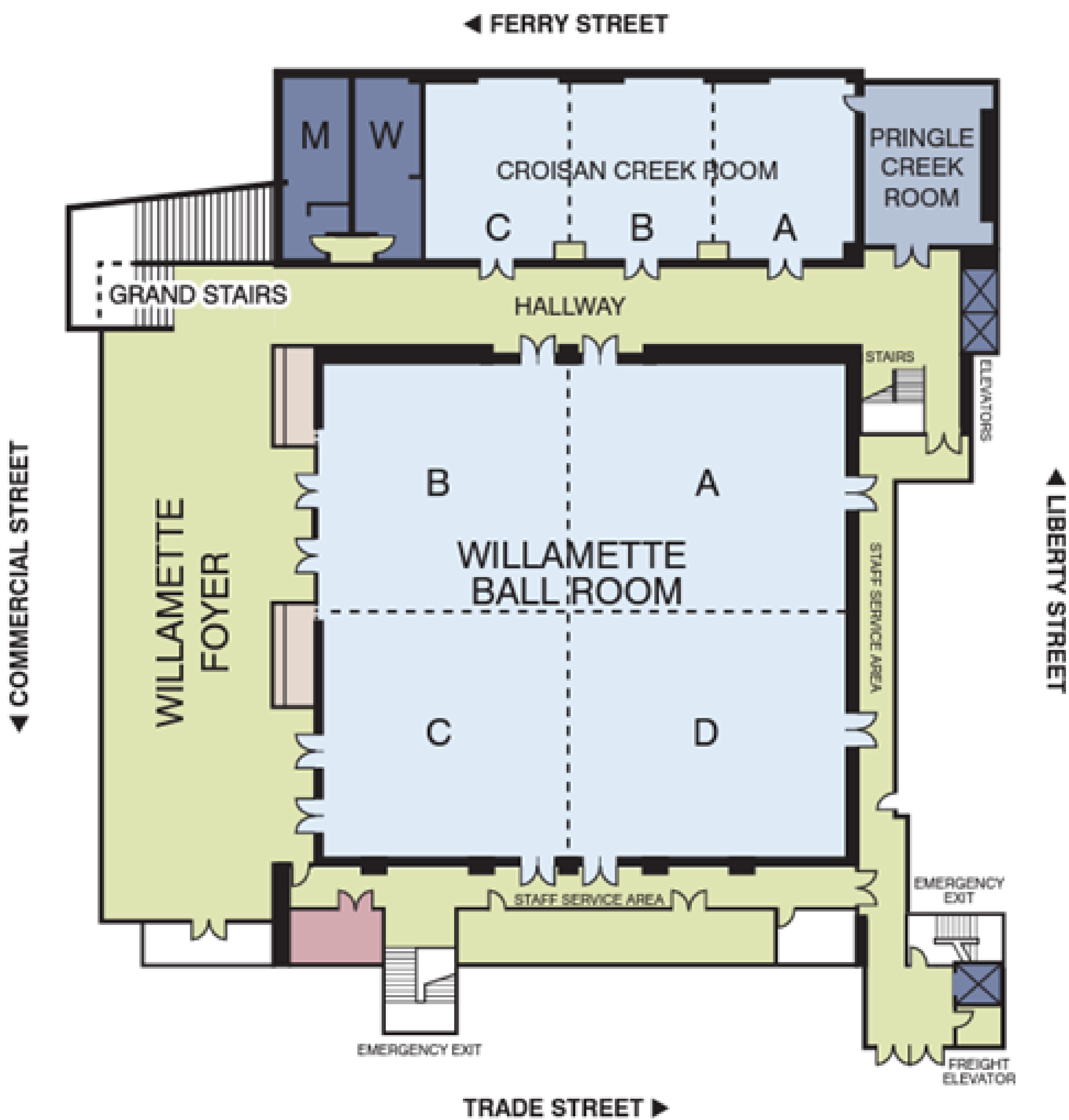


# General Information



**Wi-Fi:** “SCC-complimentary” wireless network – No additional log in required.

## SECOND FLOOR



## Emergency Evacuation Plan

In the event of an emergency evacuation, designated floor monitors will direct guests out of the building through the appropriate exits.

Guests and staff will be directed to the designated waiting area, located at least 50 yards from the SW corner of the building, Commercial Street SE and Trade Street.

If necessary, the waiting area will be moved farther from the building by crossing Trade Street.



# Slido Information

During today’s sessions, your presenter may invite you to use Slido, an audience interaction tool, to collect and answer your questions! Slido allows you to submit your questions as well as upvote the questions of others. Questions with the highest number of votes stand a better chance of being asked during the time allotted for the panel.

## Follow these steps to join:

- Connect to Wi-Fi on your smartphone or tablet.
- Open the web browser.
- Go to [www.slido.com](http://www.slido.com) and enter the event code **#ACECODOT25** or go directly to our Slido by clicking on the Event Link or scanning the QR code below.
- Ask your questions and upvote questions you like!

## Conference Evaluation

*Your feedback allows us to continually improve this conference for future years. Please take some time to fill out this evaluation form to let us know how we did!*

### Slido Event Link



### Slido QR Code



2025 ACEC|ODOT Partnering  
Conference - Attendee  
Evaluation



### Conference Evaluation Link



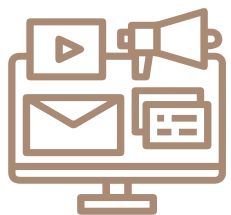


## Morning General Session



### Event Check-in | 7:00-8:00a

*Sign in. Socialize. Grab a snack. Find a seat.*



### Welcome by ACEC and ODOT | 8:00-8:15a

**Katherine Benenati | ODOT — Assistant Communications Manager**

**Tina Adams | ACEC Oregon — President**

**Amy Ramsdell | ODOT — Administrator, Delivery & Operations Division**

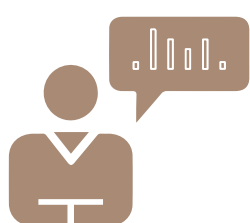
*Conference commencement by our MC, along with welcome addresses by ACEC and ODOT.*



### State of the Agency & Budget | 8:15-8:35a

**Travis Brouwer | ODOT — Assistant Director for the Office of Revenue, Finance, and Compliance**

*An overview of agency goals, direction, and financial stability.*



### Transportation Legislative Update | 8:35-8:55a

**Kelly Scannell Brooks | Office of the Governor — Transportation, Infrastructure and Economic Development Policy Advisor to Governor Kotek**

*Current legislative outcomes and critical transportation focus areas for Gov. Kotek and staff.*



### ACEC Oregon Update | 8:55-9:25a

**Tina Adams | ACEC Oregon — President**

*A look at fostering an environment to thrive and benefit our communities.*



### Break | 9:25-9:50a





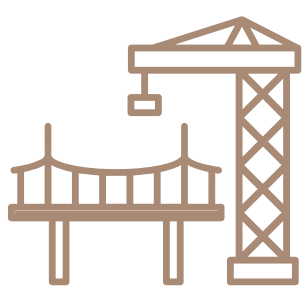
## Morning General Session

*Continued*



### Funding Impacts to Architecture & Engineering and Disadvantaged Business Enterprise | 9:50-10:20a

[Jeff Flowers | ODOT — Statewide Investments  
Management Section Manager](#)



### Interstate Bridge Replacement Update | 10:20-11:05a

[Ray Mabey, PE | ODOT — Assistant Administrator,  
Interstate Bridge Replacement Program](#)

*The Interstate Bridge Replacement Program seeks to replace the aging I-5 bridge over the Columbia River, a critical connection between Portland and Vancouver. This bi-state program is studying the range of potential impacts and benefits of proposed multimodal investments to improve safety, mobility, and earthquake readiness in the area.*



### Break | 11:05-11:20a



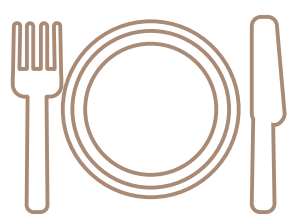
### Consultant Billing Rates for ODOT Architecture & Engineering Contracts | 11:20-12:00p

[Whitney Scovell | ODOT – Billing Rate Oversight Analyst](#)

[Margaret Cole | ODOT – External Audit Manager](#)

[Diana Strassmaier, CPA, CCIFP® | Aldrich CPAs + Advisors – Partner](#)

*Join us for a practical look at billing and overhead rate administration for A&E consultant contracts. We'll walk through key requirements, explore examples, and talk about our review process. Whether you're new to ODOT work or are a seasoned consultant, this session will help you navigate the process with clarity and confidence.*



### Lunch | 12:00-1:30p





## Rooms & Facilitators

Room 1 | Willamette Ballroom

Facilitator – Kris Scott | ODOT – Transportation Projects Program Manager

Room 2 | Croisan A

Facilitator – Karla Keller | ACMS Northwest – Operations Manager

Room 3 | Croisan B

Facilitator – Josh Brooking | Mott MacDonald – Project Manager

Room 4 | Croisan C

Facilitator – Nick Robertson | DOWL – Project Manager





# Breakout

## Session One

### 1:30-2:15p

# 01

## UPRR/Railroad Coordination and Design | Room 1

**Nicole Frankl | ODOT – State Utility and Rail Liaison**

*Join ODOT's state utility and rail coordinator for an in-depth look at the challenges and best practices of coordinating with Union Pacific Railroad on transportation projects. This session will cover key design considerations, regulatory requirements, and strategies for streamlining approvals and collaboration. Attendees will gain insights into the unique constraints of working within railroad right-of-way and learn how to navigate the process effectively to keep projects on track.*

## ADA Ramp Construction: Lessons Learned & Best Practices | Room 2

**Chad Maxwell, P.E. | Consor – Construction Project Manager**

**Bryan Strasser | ODOT – Region 5, Resident Engineer for Consultant Projects**

*Consor's design and construction management teams have been at the forefront of ODOT's work toward curb ramp compliance in Region 5, and key players working with ODOT to meet the schedule and deliver improvements for Oregonians. Chad and Bryan have collaborated on over a thousand ramps in eastern Oregon and this presentation focuses on the lessons learned along the way. We will discuss best practices for ramp construction, lessons learned, and design considerations that help lead to successful ADA projects.*

## Multimodal Inventory for Metropolitan Areas | Room 3

**Theresa Conley | ODOT – Principal Transportation Planner**

**Carl Springer, P.E., PTP | DKS Associates – Principal & Director of AI Strategy**

*ODOT is collaborating with cities, counties and regional agencies throughout Oregon's metropolitan areas to produce a detailed inventory of multimodal transportation infrastructure. This inventory will include roads, bike paths, sidewalks, and other parts of the transportation system to help guide future planning aligned with Transportation Planning Rules requirements. The project team is as robust as the project is ambitious. Project leads will describe the project goals and dig into the complexities of working with data from nearly 50 jurisdictions, using new computer-based methods to build out a statewide dataset, defining a collaborative long-term data management structure. We will highlight the project organization, workflows, and lessons learned from initial results.*

## I-105: Willamette River to Pacific Hwy | A Collaboration of Safety Innovation & Cost Efficiency | Room 4

**Jeff Bernardo | DOWL – Chief Operating Officer & Senior Project Manager**

**Shane Prohaska | ODOT – Region 2, Resident Engineer for Consultant Projects**

*Walk through this dynamic project where innovative ideas and partnership made way for consulting engineers and ODOT to develop a safer alternative for performing highway paving work. Learn how this project team addressed the dangers of live traffic on this urban highway, created enhanced work zone safety, and made way for greater efficiencies by leveraging crossovers.*

**Break | 2:15-2:30p**



# Breakout

## Session Two

### 2:30-3:15p

# 02

#### Navigating Oregon's Changing Small Business Landscape: A New Pathway and Timely Updates | Room 1

[Ailsa Kellam | ODOT – Small Business Development Program Manager](#)

[Diponker Mukherjee | ODOT – DBE Program Manager](#)

[Jeremy Johnson | Business Oregon – Program Analyst](#)

*Discover a new pathway for small businesses in Oregon. This session introduces ODOT's Small Business Development Program and features essential DBE and COBID updates, equipping you with the knowledge required to navigate Oregon's changing small business landscape in 2025.*

#### Design-Build Best Practices: Successful Collaborations from ODOT Projects and Beyond | Room 2

[Miranda Wells, P.E. | ODOT – Resident Engineer for Consultant Projects](#)

[David McCurry, P.E. | Parsons – Senior Program Director](#)

*Join us to learn more about best practices in design-build delivery, using ODOT's U.S. 97 & U.S. 20 Bend North Corridor Design-Build and ADA design-build projects as recent case studies and discussing growth based on standard practices throughout the U.S.*

*The presentation will cover strategies for success – focusing on mitigating risks, fostering collaboration, managing stakeholder expectations, and leveraging lessons learned to improve project outcomes. Insights from similar agencies, the national DBIA, and nationwide projects will provide a comprehensive look at how to achieve success in design-build contracting, including on progressive design build projects.*

#### Multimodal Design Decisions Using Project-specific Performance Measures | Room 3

[John Wolf, P.E. | HDR – Senior Project Manager](#)

[Theresa Rohlfs, P.E. | ODOT – Senior Traffic Engineer](#)

*We've all had projects where operational standards can't be met or conflict with the standards for other modes. To address this challenge, the I-5 Rose Quarter Project team established project-specific Measures of Effectiveness (MOEs) to balance mode priorities.*

*This presentation reviews the process used to create project specific MOEs, outlines the MOEs used for I-5 Rose Quarter, and how you could apply a similar process to your multimodal project. It also includes a discussion of performance measures for highway traffic, local streets, pedestrians, bikes, transit, freight, major events, and community priorities.*

#### Project Evolution Through Agency Collaboration | Room 4

[Dustin Cooley, P.E. | APEX – Senior Transportation Manager](#)

[Robert DeVassie, P.E. | ODOT – Resident Engineer for Consultant Projects](#)

*Challenges associated with implementing a major paving program project through an urban area, and the success of ODOT's partnership with City of Canby to benefit the community with improved safety, accessibility, transit stops, and stormwater facilities.*

#### Break | 3:15-3:30p



# Breakout

## Session Three

### 3:30-4:15p

# 03

#### Digital Delivery – Model as Legal Document (MALD) | Room 1

[Emilie Albert, P.E. | Kittleson & Associates – Senior Engineer](#)

[Andrew Thompson, EIT | Kittleson & Associates – Senior Engineering Associate](#)

[Gary Holeman, P.E. | ODOT – Senior Automation Engineer](#)

*PennDOT is progressing several dozen Model as Legal Document (MALD) pilots as part of the Digital Delivery Directive 2025 which will allow 3D deliverables for the first time.*

*These pilot projects are setting a new standard for PennDOT design processes and deliverables but are not without challenges. Join us to learn about PennDOT's digital delivery program and Kittelson's experience working on a PennDOT pilot project. It will capture lessons learned on project organization, survey needs, 3D deliverables, QAQC, and staff development.*

#### Reducing Embodied Carbon: Strategies for Transportation & Infrastructure Projects | Room 2

[Matt Hoffman, P.E., S.E. | KPFF Consulting Engineers – Project Engineer](#)

[Cameron Gasgow, P.E. | City of Portland – Bridge Engineering Supervisor](#)

[Kevin Shearmire, P.E. | ODOT – Sustainability Engineer](#)

*Embodied carbon from new infrastructure and building projects accounts for approximately 11% of global CO2 emissions. While in recent years the commercial construction industry has made a concerted effort to limit embodied carbon emissions, infrastructure projects are now just beginning to evaluate and adopt sustainability standards. This presentation will discuss current efforts and initiatives on infrastructure sustainability from the local agency, state agency, and consultant perspectives and present goals and strategies to further decarbonize future projects.*

#### Enhancing Safety: How ODOT Utilizes Near-Miss Data at Intersections and Along Corridors | Room 3

[Peter Kurtz | Quality Counts – Chief Operating Officer](#)

[Tiffany Slauter | ODOT – Region 1, Traffic Investigation & Safety Engineer](#)

*Safety is a top priority for transportation engineers, with crash data traditionally serving as the main source for analysis. However, this approach leaves significant gaps, prompting agencies in recent years to begin to incorporate near-miss conflict data as a critical supplement.*

*This session presents valuable insights drawn from projects with the region and other agencies. They will explore how DOTs are leveraging near-miss conflict analysis in key applications, such as addressing corridors with bike and pedestrian safety concerns, securing Highway Safety Improvement Program funding through benefit-cost analysis, and fostering public and stakeholder engagement.*

*This dynamic session will deepen participants' understanding of safety in transportation engineering, demonstrating how the proactive use of near-miss data can inform the development of more effective countermeasures and lead to safer transportation networks.*

#### Project Overview: I-5 Boone Bridge Replacement | Room 4

[Ed Chamberland, P.E. | David Evans and Associates – Vice President & Senior Project Manager](#)

[Stacy Tschuor, P.E. | David Evans and Associates – National Transportation Planning Services Leader](#)

[Angela Rogge | David Evans and Associates – CFEC Task Lead](#)

[Atousa Gorg, P.E. | ODOT – Resident Engineer for Consultant Projects](#)

*Boone Bridge provides a crucial connection across the Willamette River at Wilsonville.*

*After recent studies indicated the need for replacement, ODOT and DEA worked together with agencies, tribes, and community members to move the project forward.*

*This presentation will cover the unique planning work completed during this phase including two firsts in Oregon: Project-level Planning Environmental Linkages (PEL) study completed according to FHWA guidelines, and a Climate Friendly Equitable Communities (CFEC) alternatives analysis completed according to state of Oregon guidelines. The presentation will also provide an overview of project status and next steps.*



# Oregon Department of Transportation

Morning  
Presenters



**Katherine Benenati**

**Master of Ceremonies & Assistant  
Communications Director**

Katherine has served as assistant Communications director at ODOT since July 2019. Previously she served as a public information officer at the Oregon Department of Environmental Quality and as chief of the Public Outreach and Assistance Division at the Arkansas Department of Environmental Quality. Before moving to public affairs, Katherine worked as an editor and reporter at newspapers in Maryland (her native state), California, and Arkansas. She graduated from Towson University with a bachelor's in history and a minor in mass communication

Today, Katherine lives in Salem with her husband Greg and two very energetic dogs, a German shepherd named Holiday and a boxer mix named Parker.





# American Council of Engineering Companies

Morning  
Presenters



Tina Adams, P.E.  
ACEC Oregon President

Tina is the current president of ACEC Oregon, current board representative to the ACEC-ODOT Steering Committee, and has been involved in the ACEC-ODOT Liaison Committee for nearly 20 years. Tina has served as project manager, utility coordinator, designer, specifications writer, and QA/QC reviewer for ODOT and other agency projects located throughout the state.

Tina specializes in multi-discipline transportation infrastructure projects, and her firm, Casso Consulting, Inc. subcontracts to prime consultants that deliver projects within a multi-disciplinary team and multiple-firm framework.





# Oregon Department of Transportation

Morning  
Presenters



**Amy Ramsdell**

**Administrator, Delivery & Operations Division**

Amy was appointed Delivery & Operations Division administrator in August 2024 and was previously the Commerce and Compliance Division administrator for over seven years. She oversees ODOT's capital program as well as the maintenance and operations programs.

Amy has been with ODOT since 1997 and has served in a variety of positions in both divisions, delivering projects, standing up programs and leading a variety of teams. She worked in banking prior to joining the agency. Amy holds a Bachelor of Science in Business Economics from Willamette University.





# Oregon Department of Transportation

Morning  
Presenters



## Travis Brouwer

**Assistant Director for Revenue,  
Finance, and Compliance**

Travis serves as assistant director for Revenue, Finance, and Compliance. In this role, he oversees all ODOT's financial and revenue functions, including the DMV, Commerce and Compliance Division, and Finance and Budget Division. He has responsibility for ensuring sustainable revenue and maintaining the agency's fiscal health.

Brouwer joined ODOT in 2005. Previously, Travis served for more than five years as assistant director for Public Affairs, overseeing all of the agency's externally facing functions. He also served eight years as the agency's Federal Affairs advisor, working with Oregon's congressional delegation and other federal officials on legislation, funding, and policy.

Prior to joining the Oregon Department of Transportation, he worked for Congresswoman Darlene Hooley for over six years, including serving as her district co-director and running her Salem district office.

Travis graduated from Willamette University in 1999 with a degree in politics. He lives in Salem with his wife and three children.





# State of Oregon

Morning  
Presenters



## Kelly Scannell Brooks

**Transportation, Infrastructure  
and Economic Development  
Policy Advisor**

Kelly is the Transportation, Infrastructure and Economic Development policy advisor to Governor Tina Kotek. Prior to joining the administration, Kelly served as the assistant city manager of Milwaukie from 2017 to 2023. While Kelly's job with the governor is new, working closely with ODOT is not. From 2011 to 2017, she worked at ODOT Region 1 in various roles which included serving as the region's Policy and Development manager during HB 2017 development.





# Oregon Department of Transportation

Morning  
Presenters



## Jeff Flowers

**Statewide Investments  
Management Section Manager**

Jeff first joined the Oregon Department of Transportation in 2006 and spent 17 years of his tenure working in the Statewide Transportation Improvement Program. Since 2019, Jeff has led the Statewide Investments Management Section (SIMS). This section is responsible for the administration of the STIP and other state grant programs, including management of the Federal Highway Administration funding portfolio with an annual budget of \$700-\$800 million. As the SIMS manager, Jeff helped generate \$600 million in additional funding from FHWA.

Jeff has been married for 22 years and is a proud parent of two daughters.





# Oregon Department of Transportation

Morning  
General Presenters



**Ray Mabey, PE**

**Assistant Administrator, Interstate  
Bridge Replacement Program**

Ray is the assistant administrator of the Interstate Bridge Replacement Program, a bi-state effort to replace the Interstate Bridge across the Columbia River. He is a professional engineer with a Bachelor of Science in Civil Engineering and graduate studies in structural engineering from Oregon State University. Ray has served at ODOT for 31 years and has over 34 total years of public and private sector experience.





# Oregon Department of Transportation

Morning  
Presenters



**Whitney Scovell**

**Billing Rate Oversight Analyst**

Whitney works on the Procurement Oversight team, supporting personal and professional services consultants by establishing and maintaining billing rates for ODOT's consulting contracts. She oversees the billing rate program for the agency and facilitates process improvements for the program by working to maintain compliance, improve resources and provide education. Whitney has been with the Procurement Office since 2019, though she started with ODOT in 2016 and has supported programs such as alternative delivery and ADA.





# Oregon Department of Transportation

Morning  
Presenters



**Margaret Cole**  
**External Audit Manager**

Margaret is the external audit manager for the Oregon Department of Transportation. She has been with the Audit Services group since 2005. Margaret is a long-time member on the AASHTO Audit Guide Task Force and a past member of the National Compensation Matrix (NCM) Development and Maintenance team. Margaret is a recipient of the AASHTO Dave Campbell Quality Award. She holds a B.A. degree in Accounting from Regis University and she is a Certified Public Accountant.





# Aldrich CPAs + Advisors

Morning  
Presenters



Diana Strassmaier,  
CPA, CCIFP®

Partner

Diana is a partner at Aldrich CPAs + Advisors and a recognized expert in indirect cost rate audits for government contractors, particularly for architects and engineers. With over 20 years of experience, she helps clients navigate overhead rate compliance and maximize compensation. Diana is a frequent speaker at ACEC conferences and is a certified National Highway Institute instructor on the AASHTO Audit Guide. She is widely known across the Pacific Northwest, west coast, and mid-Atlantic for her deep industry knowledge and practical approach to government contracting.





# Breakout Room Presenters

*Speakers below are listed in alphabetical  
order by last name.*



**KITTLESON &  
ASSOCIATES**

## Emilie Albert, P.E. Senior Engineer Kittleson & Associates

Since graduating from the University of Cincinnati with a BS in civil engineering in 2016, Emilie has worked on a range of roadway and highway improvement projects with agencies like PennDOT, DelDOT, MD SHA, the Pennsylvania Turnpike Commission, and the City of Philadelphia Streets Department. With a passion for and strong background in modeling (Civil 3D and ORD), Emilie has been heavily involved in digital delivery and is interested in taking on the new industry challenges that will come with model as a legal document (MALD).



**DOWL**

## Jeff Bernardo Chief Operating Officer & Senior Project Manager, DOWL

Jeff serves as DOWL's chief operating officer and senior project manager. He has nearly 30 years of experience providing a full range of project management and context-sensitive solutions on dozens of federal, state, and local highway, roadway and bridge replacement projects within the state of Oregon. He proactively partners with stakeholders, such as ODOT, counties, municipalities, and other public agencies, to complete projects with diverse challenges, including complex traffic staging. Jeff is an active member of the Oregon





# Breakout Room Presenters

chapter of the American Council of Engineering Companies and currently serves as co-chair of the ODOT/ACEC Steering Committee.



**DAVID EVANS  
AND ASSOCIATES**

## Ed Chamberland, P.E. Vice President & Senior Project Manager David Evans and Associates, Inc.

Ed is a senior project manager and vice president at David Evans and Associates, Inc. During his 30-year career as a civil engineer, he has delivered a variety of transportation projects that serve local communities here in Oregon. Recent notable projects include the I-5 Aurora Donald Interchange, the Highway 22 Safety Project in west Salem, and the I-5 Boone Bridge Replacement Project, of which he was the project manager for the consultant team. During his spare time, he enjoys biking, traveling, volunteer work, and spending time with family and friends.



**ODOT**

## Theresa Conley Principal Transportation Planner ODOT

Theresa is a principal planner with the Oregon Department of Transportation where she leads a team supporting implementation of the transportation planning rules and serves as project manager for the Multimodal Inventory Project. She has over 20 years of experience in planning and community development, working in rural, urban and international settings. Theresa has a Masters of Community Planning from the University of Cincinnati.





# Breakout Room Presenters



**APEX**

## Dustin Cooley, P.E. Senior Transportation Manager APEX

A Portland native, Dustin attended Clackamas High School and graduated from Portland State University in 2000 with a Bachelor of Science in Civil Engineering. Over the last 25 years, he has focused on transportation-related projects across the western United States, including supporting ODOT projects since 2006. Dustin's broad delivery experience includes working with federal, state, and local agencies on design-build, design-bid-build, and planning-level projects.

In 2016, Dustin worked with the ODOT technical services group in Salem to develop ADA curb ramp design best practices guidelines. He also supported the development and presentation of the original ADA Curb Ramp Designer two-day training across the state in 2018. Dustin continues to support the curb ramp replacement program through ODOT project delivery as a consultant at Apex.



**ODOT**

## Robert DeVassie, P.E. Resident Engineer for Consultant Projects ODOT

Robert is a resident engineer for consultant projects (aka project manager) for ODOT. Robert has worked for ODOT for over six years; coming from Alaska DOT&PF where he served for 15 years in a similar role. He holds his bachelor's degree in civil engineering and a graduate certificate in design and construction management.





# Breakout Room Presenters

Robert is a registered professional engineer in Alaska and Oregon, a certified project management professional and a sustainable transportation professional. Robert is an ITE Fellow and achieved ITE Alaska Engineer of the Year. Robert is also a proud father of a daughter and two sons.



**ODOT**

## Nicole Frankl State Utility and Rail Liaison ODOT

Nicole is ODOT’s state utility and rail liaison. Prior this role, Nicole spent time with ODOT as a program development specialist, as a civil engineer with WSP, a director with Nebraska LTAP, various engineering capacities within the South Dakota Department of Transportation, and worked in construction. Nicole holds a bachelor’s degree in civil engineering from South Dakota School of Mines and Technology and a Master of Civil Engineering from North Carolina State University.



**CITY OF  
PORTLAND**

## Cameron Glasgow, P.E. Bridge Engineering Supervisor City of Portland

Cameron is the engineering supervisor for the Portland Bureau of Transportation’s Bridges and Structures Division. He is a licensed professional engineer in Oregon. Cameron has been with PBOT since 2007 and has worked on a variety of rewarding bridge design, construction, and maintenance projects over the years. Prior to joining PBOT, Cameron worked at the Federal Highway Administration in several division offices and with the Eastern Federal Lands Highway Division.





# Breakout Room Presenters

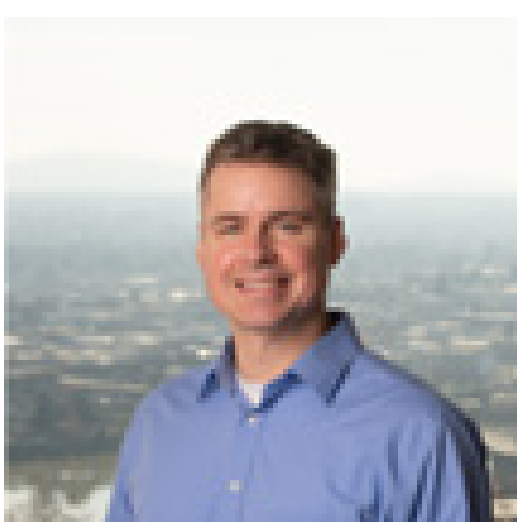


**ODOT**

## Atousa Gorg, P.E. (she/her) Resident Engineer for Consultant Projects ODOT

Atousa is a resident engineer for consultant projects in ODOT's Urban Mobility Office. Atousa has more than a decade experience in project management and design of complex structural and mega transportation engineering projects in the U.S. and overseas.

In her time at ODOT, Atousa's project management portfolio includes the engineering delivery of Interstate Bridge Replacement, I-5 Rose Quarter, I-205 Toll Project and Regional Mobility Pricing Project — ODOT's toll projects, now paused following direction from the governor — as well as the preliminary planning phase for the I-5 Boone Bridge Replacement Project, several Active Traffic Management and ADA projects within the Portland metro area. Atousa has a master's in civil and environmental engineering from Portland State University and is a licensed professional engineer in Oregon.



**KPFF CONSULTING  
ENGINEERS**

## Matt Hoffman, P.E, S.E. Project Engineer KPFF Consulting Engineers

Matt is a licensed structural engineer and project manager at KPFF Consulting Engineers in Portland. He is the Sustainable Design Committee lead for KPFF's Portland office and is one of KPFF's nationwide Embodied Carbon Leaders. Matt has been with KPFF since 2011 and has worked on many transportation and infrastructure projects in Oregon and Washington.





# Breakout Room Presenters



**ODOT**

## Gary Holeman, P.E. Senior Automation Engineer ODOT

Gary received a bachelor's degree in civil engineering from Portland State University in 1993. He became a registered professional engineer in Oregon in 2000. Gary has worked for ODOT since 1997, starting in the Corvallis construction office and moving to the Roadway Section in 2001.

Gary's background includes working as a survey crew member, site designer, roadway designer, and bridge designer. Since 2004, Gary has managed the CAD system as part of his duties as the automation engineer for ODOT. During this time Gary has brought in various new applications, such as ProjectWise and Bluebeam's Review eXtreme. Gary's current focus is preparing ODOT for Digital Delivery.



**BUSINESS  
OREGON**

## Jeremy Johnson Program Analyst Business Oregon

Jeremy is a program analyst for Business Oregon's COBID program and previously worked in finance and compliance. He also worked as a COBID certification specialist, and his primary focus is always helping small businesses.





# Breakout Room Presenters



**ODOT**

## Ailsa Kellam Small Business Development Program Manager ODOT

Ailsa is the program manager for ODOT's new Small Business Development Program. She brings over 25 years of experience in program development, change management, and business consulting. Prior to joining ODOT in 2024, Ailsa held leadership roles in higher education and chambers of commerce. Her educational background includes an MBA in Human Resource Management and a BS in Marketing. She also holds Prosci® Change Practitioner, SHRM-SCP, and ICF-ACC certifications.



**QUALITY  
COUNTS**

## Peter Kurtz Chief Operating Officer Quality Counts

Peter is the chief operating officer at Quality Counts, where he leads national operations with a focus on high-profile, large-scale transportation data projects. With over 20 years of experience in the industry and a background that spans both coasts, Peter has had the opportunity to collaborate with a diverse range of state DOTs, public agencies, and engineering firms.

He holds a Bachelor of Science in Economics and Business Administration from the University of Oregon and is an active member of the Oregon and North Carolina sections of the Institute of Transportation Engineers. Outside of his professional life, Peter enjoys spending time with his wife Lydia, their three children — Emerson, Jack and Halle — and the family dog, Nash.





# Breakout Room Presenters



**CONSOR**

## Chad Maxwell, P.E. Construction Project Manager Conсор

Chad is a construction project manager at Consor with almost 20 years of experience in local, state, and federal transportation infrastructure development projects. As Consor's Construction Management, ODOT ADA Program delivery manager, Chad plays a key role in project quality control, bringing consistency across his team in Oregon for consultant lead ODOT CA/CEI contracts for the ADA program. Chad works closely with other project managers, inspectors, design engineers, ODOT, and contractors to confirm full compliance to deliver successful projects. In Region 5, Chad has delivered multiple ODOT projects, with a combined total of over 1,000 ADA compliant curb ramps and is currently working on several other ODOT ADA projects throughout the state.



**PARSONS**

## David McCurry, P.E. Senior Program Director Parsons

David is a senior program director at Parsons with 25 years of experience specializing in design-build and complex bridge and tunnel projects. He has contributed to over 80 DB projects totaling \$8 billion in construction, particularly with WSDOT. David supported ODOT in relaunching its DB program, serving as a consultant on the \$181M U.S. 97 & U.S. 20 Bend North Corridor project.

David serves on the DBIA National Transportation Markets Committee and brings national expertise, including Portland's Tilikum Crossing DB, LA Metro's \$2.6B Purple Line transit tunnels DB, and current DB procurements for the City of Honolulu.





# Breakout Room Presenters



**ODOT**

## Diponker Mukherjee

### DBE Program Manager ODOT

Diponker serves as the DBE Program manager for ODOT's Office of Equity and Civil Rights. Diponker is involved in DBE goal setting, disparity study, DBE supportive services, DBE Advisory Committee, and other activities related to various FHWA-funded projects. Diponker started in May 2022. Previously, he managed civil rights programs of transit systems in Texas and Oklahoma for over 20 years. His education includes an MA in Geography from Kansas State University and M.Sc. & B.Sc. in Geography from University of Dhaka, Bangladesh.



**ODOT**

## Shane Prohaska

### Resident Engineer for Consultant Projects ODOT

Shane is the ODOT Region 2 - Area 5 (Springfield) resident engineer and holds bachelor's degrees in both Civil Engineering and Forest Engineering from Oregon State University. He has worked for ODOT for over nine years in the transportation field in a variety of construction related positions, starting off as a construction specialist, then transitioning to a project coordinator, assistant resident engineer, and finally a resident engineer. His career in the construction office has provided him experience overseeing the administration of multiple types of paving, bridge and urban development projects with the state. Shane is a registered professional civil engineer in Oregon.





# Breakout Room Presenters



**DAVID EVANS  
AND ASSOCIATES**

## Angela Rogge Project Manager & Climate Friendly Equitable Communities Task Lead David Evans & Associates

Angela is a project manager and transportation engineer with 17 years of experience leading planning and engineering efforts across the Pacific Northwest. She has worked closely with ODOT, local, state, and federal agencies on a wide range of projects, including transportation system plans, corridor studies, and safety analyses. She's helped shape everything from major interstates to quiet neighborhood streets—but she's still dreaming of a commute by raft down the McKenzie River.



**ODOT**

## Theresa Rohlf, P.E. Senior Traffic Engineer ODOT

Theresa is a senior traffic engineer at the Oregon Department of Transportation, focused on the I-5 Rose Quarter Improvement Project. She was drawn to this project for the opportunity to connect her passions for traffic engineering, social equity, and accessibility for all. Prior to joining ODOT, Theresa was a product manager at Cubic|Trafficware, working with software development teams for Synchro Studio and SCOUT (traffic signal controller software). After graduating from the University of Kansas, Theresa started her career at the Missouri Department of Transportation, where she developed an interest in traffic operations, analysis, and signal timing.





# Breakout Room Presenters



**ODOT**

## Kevin Shearmire, P.E. Sustainability Engineer ODOT

Kevin is ODOT's statewide sustainability engineer and holds a bachelor's degree in civil engineering from Oregon State University. Kevin has worked for ODOT for over 10 years, starting in the Bridge Engineering Section, then transitioning into the Structure Services Unit in Construction Section. Kevin is a registered professional civil engineer in Oregon.



**ODOT**

## Tiffany Slauter Traffic Investigation & Safety Engineer ODOT

Tiffany is the ODOT Region 1 traffic investigations and safety engineer. She has been with ODOT for 17 years, working in signal operations and traffic investigations. She coordinates a team that investigates complaints and safety concerns for state highways in the Portland-Metro area. In 2024, she joined the newly formed Vulnerable User Fatal Crash Response Team and has helped develop five safety projects in response to recent pedestrian crashes. Tiffany's hobbies outside of work include board games, books, and crochet.



**DKS ASSOCIATES**

## Carl Springer, P.E., PTP Principal & Director of AI Strategy DKS Associates

Carl serves as a principal at DKS Associates in their Portland, Oregon office and is a planning practice leader for their northwest offices. He also serves as director AI strategy. He graduated from Washington State University





# Breakout Room Presenters

and University of California, Berkeley with engineering degrees, and has led long-range transportation plans in Washington, Oregon, California and Texas. He is the consultant project manager for the ODOT Multimodal System Inventory in Metropolitan Areas contract.



**ODOT**

## Bryan Strasser Resident Engineer for Consultant Projects ODOT

Bryan has worked in construction offices for the Wyoming DOT, North Dakota DOT, HDR Engineering, Inc., and for the last seven years as the Region 5 resident engineer for consultant projects. Bryan has developed many ODOT projects, from design through construction, and was involved in the development of the ADA program, bringing consistency and efficiency to the program and thousands of ADA-compliant curb ramps to eastern Oregon.



**KITTLESON &  
ASSOCIATES**

## Andrew Thompson, EIT Senior Engineering Associate Kittleson & Associates

Based in Kittelson's Philadelphia office, Andrew has experience in traffic operations, roundabouts, and highway design around the US. He has a passion for embracing new technologies and the project manager for one of PennDOT's model as a legal document (MALD) pilot projects.





# Breakout Room Presenters



**DAVID EVANS  
AND ASSOCIATES**

## Stacy Tschuor, P.E. National Transportation Planning Services Leader David Evans and Associates, Inc.

Stacy is the National Transportation Planning Services leader at David Evans and Associates, Inc. She has almost 30 years of experience in traffic engineering with a focus on transportation planning and multimodal operations. She has managed and/or led the planning and traffic analysis tasks for 12 Planning and Environmental Linkages (PEL) studies over the last 15 years, also participating to the successful transition of the alternatives evaluation and project recommendations to streamlined project implementation.



**ODOT**

## Miranda Wells, P.E. Resident Engineer for Consultant Projects ODOT

Miranda is a resident engineer for consultant projects. She holds a bachelor's degree in civil engineering from Oregon State University. Miranda has worked for ODOT for over six years where she led ODOT's first design-build project in more than 10 years. She currently works within the ADA program where she is leading the start of design-build for the program.

Prior to joining ODOT, Miranda worked around the nation consulting on various project delivery methods and stages of project development and delivery. As a consultant, Miranda supported ODOT on major projects with a focus in traffic operations for all modes, technology, and project management. Miranda is a registered professional civil engineer in Oregon and Washington.





# Breakout Room Presenters



HDR

## John Wolf, P.E. Senior Project Manager HDR

John is a senior project manager for HDR with 20 years of transportation experience as a roadway designer for multimodal urban corridors and major freeway projects. As the PM for the I-5 Rose Quarter Project, John has worked to navigate the unique challenges that come with capping an urban interstate through a downtown metropolitan city.





# Shout Outs

*We'd like to take this opportunity to thank everyone who contributed their time and expertise in making this conference become a reality, along with everyone who joined us today.*

*Thank you to our MC, presenters, moderators, exhibitors, volunteers, and our conference planning committee.*

## Conference Planning Committee

Molly Davis, Co-Chair | David Evans & Associates – Project Manager

Bethany Veil, Co-Chair | ODOT – Senior Urban Design Engineer

Abby Black | Northwest Watersheds – Civil/Water Resources Engineer

Joshua Brooking | Mott MacDonald – Project Manager

Rachel Fast, P.E. | Consor Engineering

Matt Hoffman | KPFF – Project Engineer

Karla Keller | ACMS Northwest – Operations Manager

Monica Leal | Global Transportation Engineering – Principal

Tana Libby Hewlett | ODOT – Division Training Coordinator & Communications Project Manager

Nick Robertson | DOWL – Project Manager

Kris Scott | ODOT – Transportation Projects Program Manager

Beth Yutzie Sell | ODOT – Senior Training Coordinator





# Shout Outs

## Special Acknowledgments

Master of Ceremonies – Katherine Benenati | ODOT – Assistant Communications Director

Graphic Designer – Kevin Beckstrom | ODOT – Public Information Representative

## Exhibitors

AKS Engineering & Forestry

Aldrich CPAs + Advisors

Commonstreet Consulting

Conсор

Emerio

GRI

HHPR

Quality Counts

RS&H

Utility Mapping Services, P.C.

ODOT Office of Equity & Civil Rights

Wolf Water Resources



**ACEC|ODOT  
Partnering  
Conference**