

# Echo Multi-use Pedestrian Path

## Umatilla County

### Project Description

Project is funded for design and right of way only. Additional funding will be needed for project construction.

Design and right of way activities for future construction of a pedestrian path to encourage safe rail crossing on a route to school.

### Purpose and Need

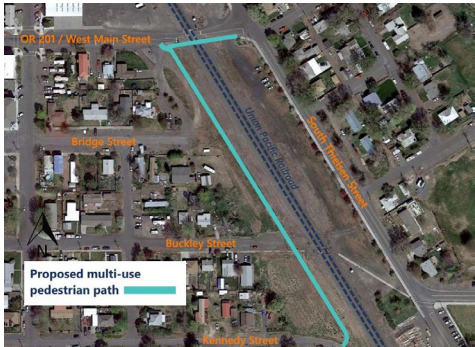
Echo, a small farming community, lies just south of Stanfield. The Union Pacific Railroad dissects the town. Children living on the west side of the railroad have to cross the tracks to reach Echo High School. Trains park for long periods in town and create an unsafe situation by blocking kids' paths.

### Proposed Solutions

- Upgrade multi-use pedestrian path.
- Construct path along south side of railroad track to existing safe railroad crossing.

### Anticipated Benefits

Improve railroad crossing safety for students and other pedestrians.



Map of proposed multi-use pedestrian path

### Estimated Project Cost

Cost for Design and ROW	\$586,000
-------------------------	-----------

