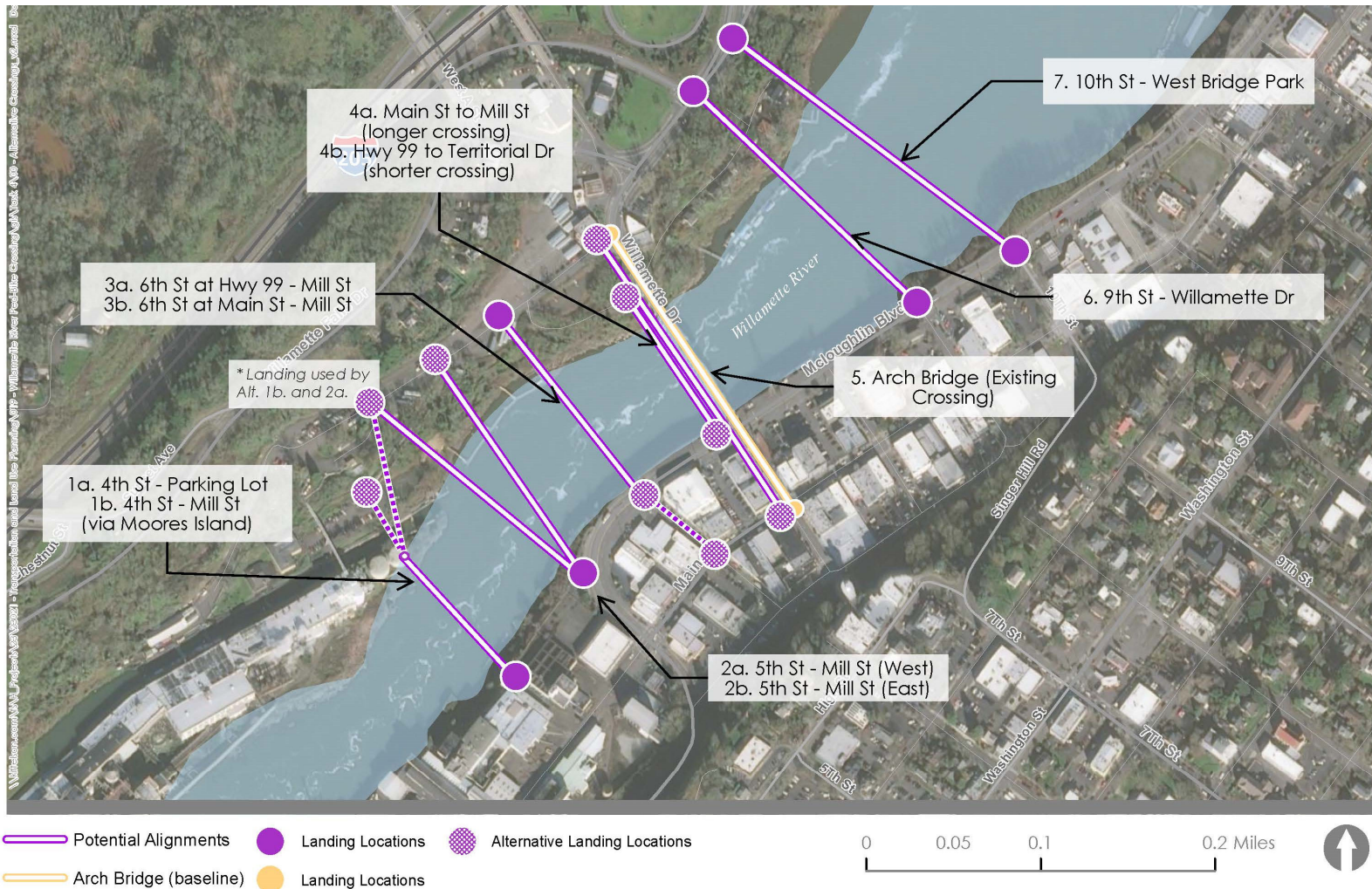


# Oregon City-West Linn Pedestrian and Bicycle Bridge Concept Plan Homework Assignment

Please review the initial crossing alignments figure (Part 1), complete the homework questions (Part 2), and email a Word, PDF or picture of the completed homework sheet to [ngross@kittelson.com](mailto:ngross@kittelson.com) by January 22, 2021.

## Part 1: Initial Crossing Alignments (Figure)

Review the initial potential crossing alignments.



## Part 2: Initial Crossing Alignments Questions & Feedback

Is there another alignment you believe is better than the ones shown or another that should be assessed?

Of the potential alignments shown, which two do you believe are the most promising and why?

What areas within the study area do you believe would not make good locations for a crossing?  
Why not?

Do you see benefits or burdens to having a new pedestrian/bicycle crossing within the study area? If so, please describe.

Additional comments?