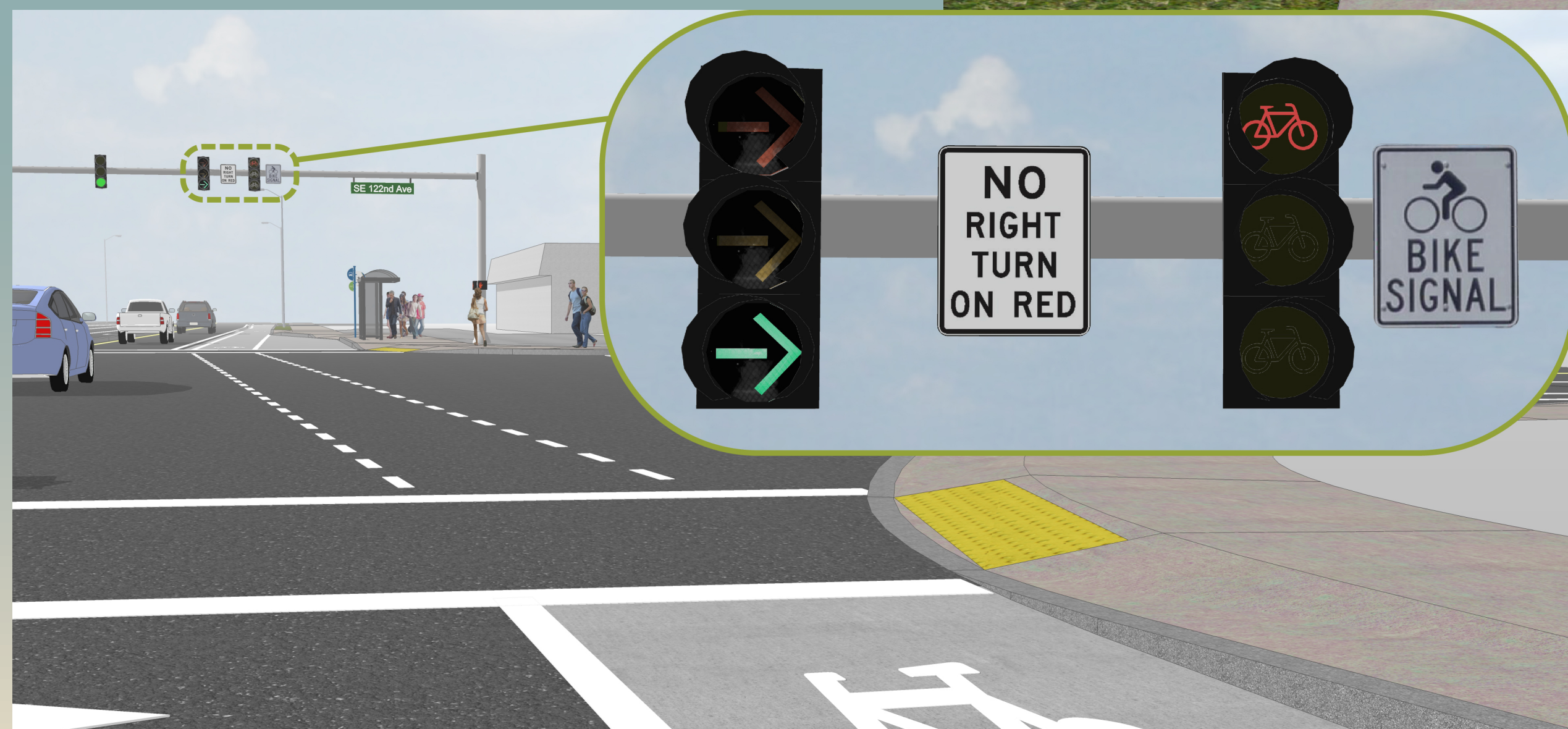


# INTERSECTIONS

## SE 122nd Avenue

- Improved sidewalks
- Westbound and eastbound bus stop pullouts
- Curb separated and buffered bike lanes
- Improved lighting
- Center median curb
- Eastbound and westbound bike signal phase

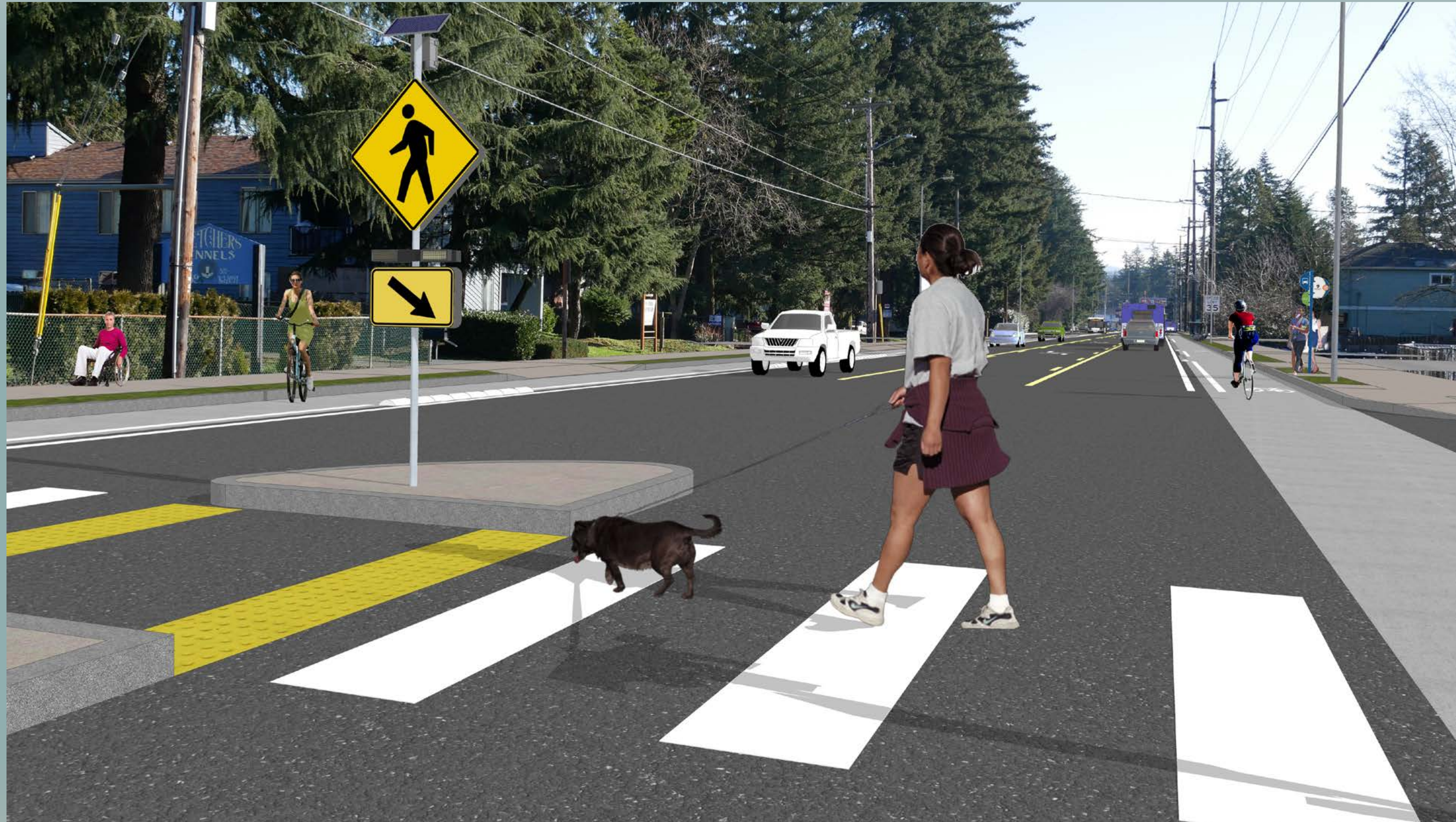
(Looking East)





# INTERSECTIONS

## SE 130th Avenue



### **Rectangular Rapid Flashing Beacon (RRFB)**

There will be improved crossings with flashing beacons along SE Powell Boulevard at approximately SE 125th, SE 130th and between SE 132nd and SE 134th Avenues. Beacons enhance safety by increasing driver awareness that someone is crossing the road.



# INTERSECTIONS

## SE 136th Avenue

(Looking West)

- Improved sidewalks
- Westbound and eastbound bus stop pullout
- Curb separated and buffered bike lanes
- Potential pilot cycle track
- Improved lighting
- Center median curb





# BIKE FACILITIES

## New Curb Separated and Buffered Bike Lanes



Bike lanes will have a curb separator for added separation to cyclists throughout the majority of the corridor. In areas where there is no curb separator due to driveways and intersections, the bike lanes will have a striped buffer to provide space between drivers and cyclists.



# BIKE FACILITIES

## Potential Pilot Cycle Track



ODOT is assessing potential raised cycle track bike treatment from approximately SE 132nd to SE 136th Avenues along the south side of the street.



# BIKE FACILITIES

## Potential Vertical Delineators

Potential Vertical Delineators along SE Powell Blvd  
 (SE 122nd Ave to SE 136th Ave)



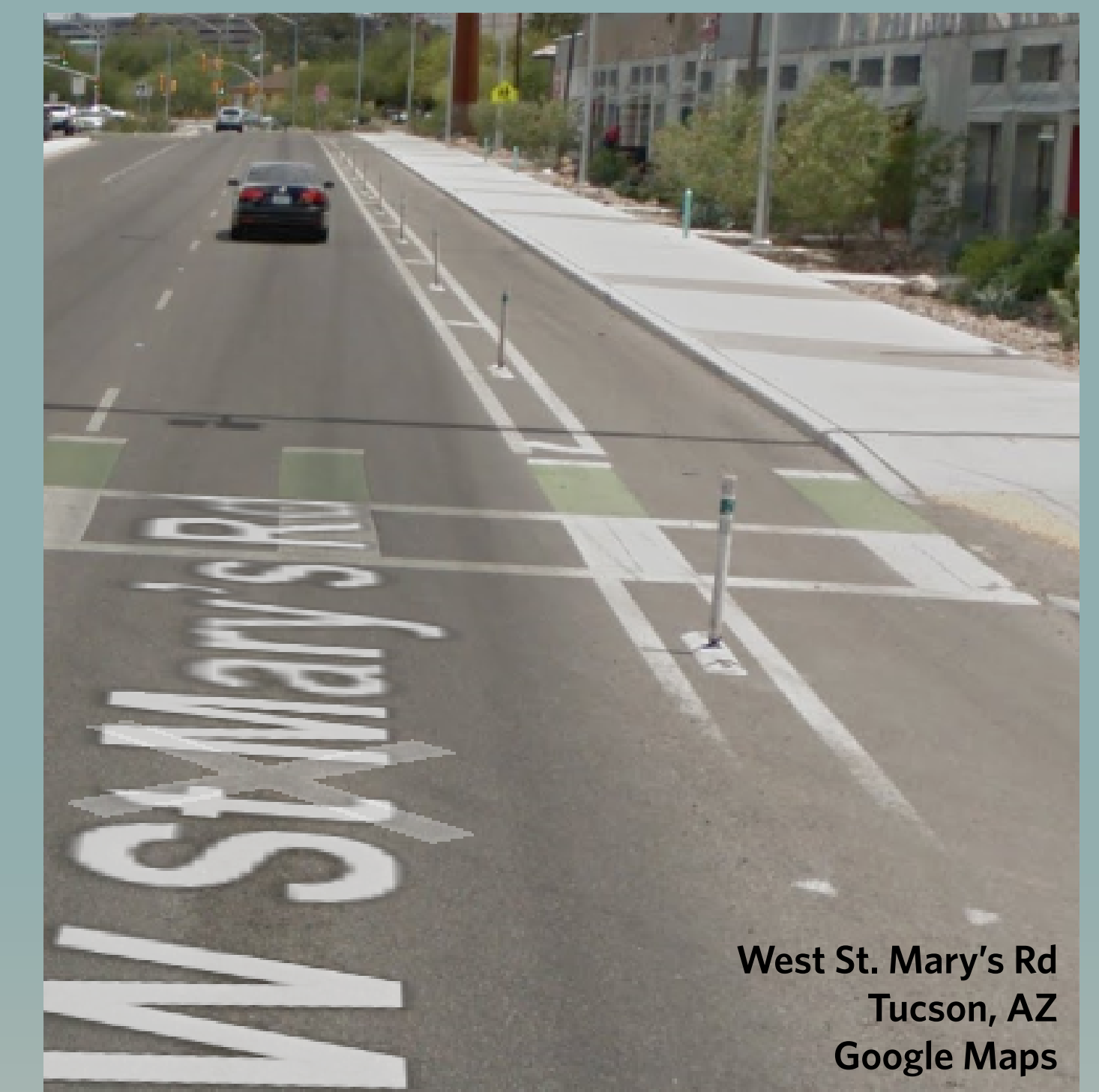
Grand and Morrison  
 Portland, OR  
[bikeportland.org](http://bikeportland.org)



Westcliff Drive  
 Santa Cruz, CA  
 Google Maps



1st St NE  
 Washington, DC  
[peopleforbikes.org](http://peopleforbikes.org)



West St. Mary's Rd  
 Tucson, AZ  
 Google Maps

ODOT is considering vertical delineators to increase visual separation of travel and bike lanes. Vertical delineators can be installed in curb separators or individually in a striped buffer.



# DRIVEWAY ACCESS

In order to provide continuous sidewalks to Outer Powell, ODOT will modify a number of existing driveways. These safety improvements will result in the following:

- Parking along SE Powell Boulevard will not be allowed.
- Center median curbs at signalized intersections may affect how people get left-turn access to driveways, intersections, and entry points.

Before



Before



After

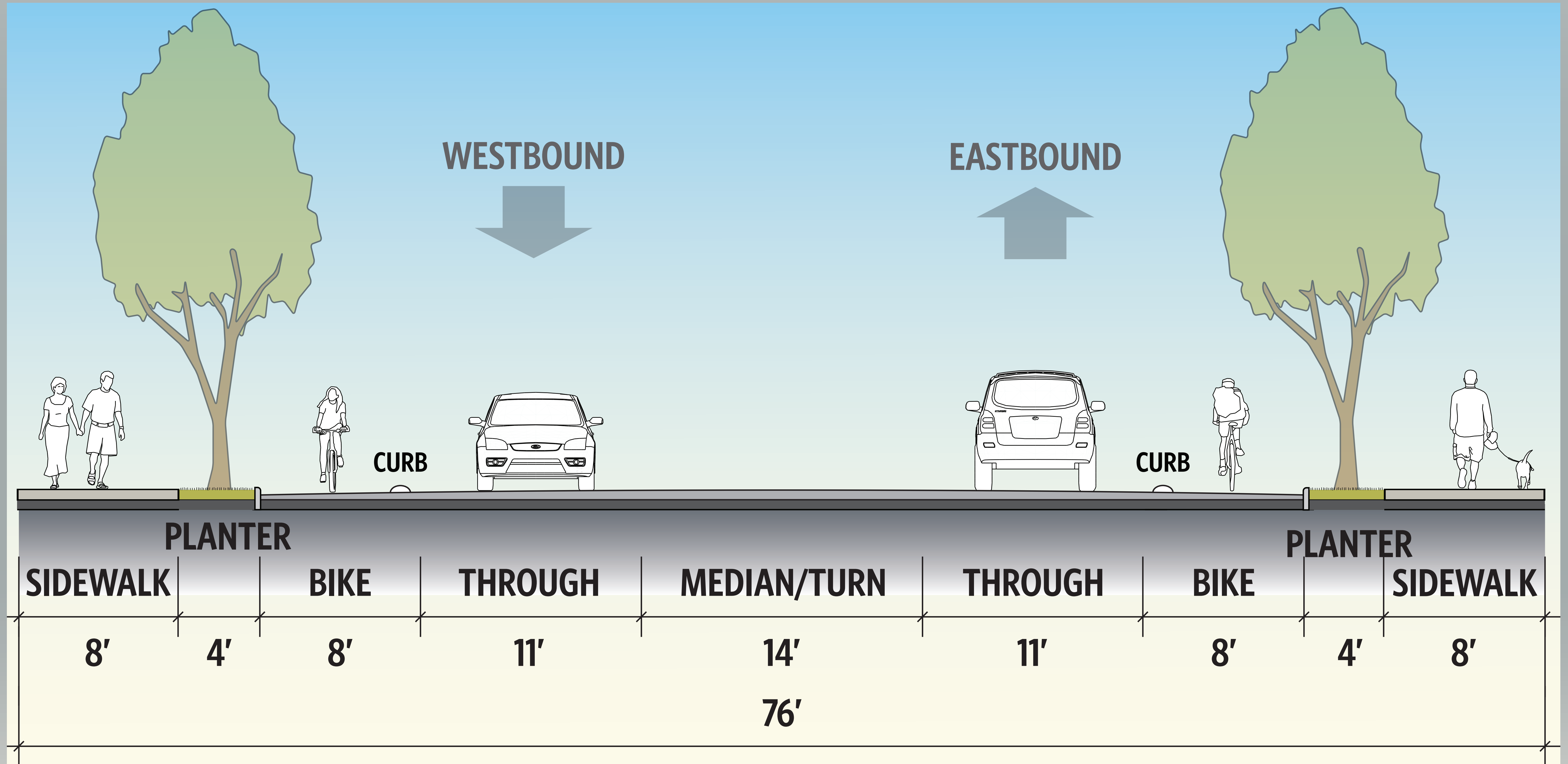


After





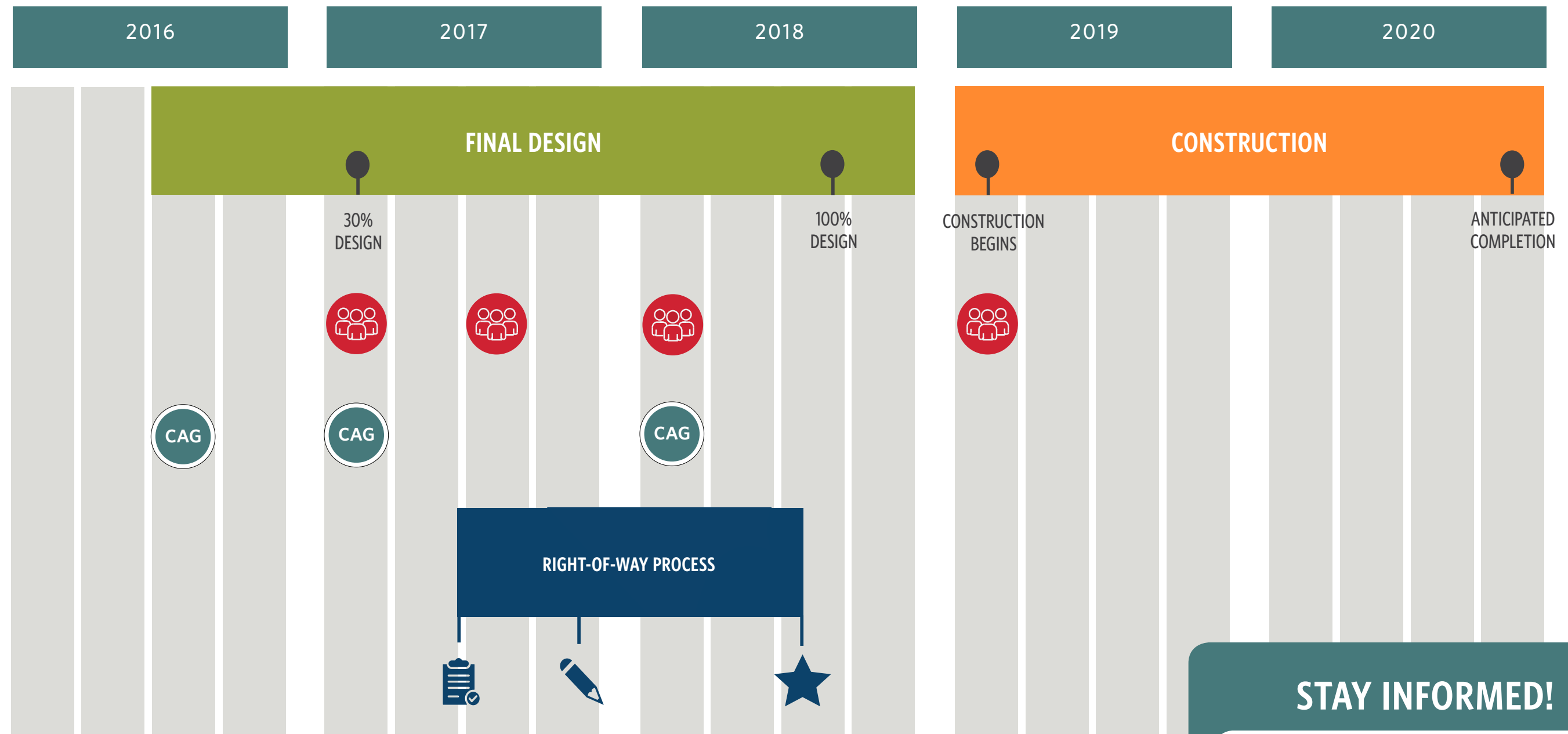
# TYPICAL CROSS SECTION





# PROJECT TIMELINE

US 26: Outer Powell Transportation Safety Project  
 SE Powell Boulevard from SE 122<sup>nd</sup> to SE 136<sup>th</sup> Avenues



## LEGEND



Community Outreach Event



Community Advisory Group (CAG)



Right-of-Way Appraisals



Right-of-Way Offers



Right-of-Way Process Complete

**STAY INFORMED!**

**OUTERPOWELLSAFETY.ORG**

DRAFT