



2026

NORTHWEST OREGON CONSTRUCTION MAP

Use this
map so you
"Know Before
You Go"



 Oregon
Department
of Transportation



SHARING THE ROAD WITH BICYCLISTS

SHARING THE ROAD WITH BICYCLISTS

In Oregon, bicycles are legally considered vehicles, and cyclists have the same rights and duties as motor vehicle drivers. Important things to know about sharing the road with cyclists:

- **Right to use a full lane:** Bicyclists have the right to use a full traffic lane, especially when there is no designated bike lane or shoulder, or when the road is narrow.
- **Passing distances:** Drivers must not overtake or pass a bicycle at a distance of less than three feet between any part of the motor vehicle and any part of the bicycle or its operator.
- **Safe Passage Law:** Drivers must give bicyclists extra room when passing, especially at speeds greater than 35 mph.
- **Turning:** When turning, drivers must check for cyclists in their blind spot and yield to cyclists in a bicycle lane or on a sidewalk.
- **Stop and Yield Law:** In Oregon, cyclists can treat stop signs and flashing red signals as yield signs. Cyclists are allowed to slow to a safe speed, check for cross traffic and if it is safe, proceed without stopping.



STAY ALERT.

- **Bicyclists can be anywhere at any time,** even in places you do not expect to see them.
- **Bicyclists can be very hard to see,** especially in bad weather or at night. Staying alert will help you notice them. If you can't see clearly, slow down.
- **Leave a safe distance** between your car and a bicyclist when passing.
- **Bicyclists are allowed** to “take the lane” if there is not room for you to safely pass.
- **Check the bike lane before turning.** Look and then look again. In city traffic, bicyclists can move as quickly as cars. If you’ve just passed a bicyclist, make sure there is plenty of space before turning across their path.
- **Be especially cautious around schools and in residential neighborhoods.** These are places where you are most likely to find children on bicycles.
- **Look before opening your door** so you don't cause a potential collision for other cars, bikes, or pedestrians.

TIPS FOR DRIVING SAFELY THROUGH WORK ZONES

FOLLOW THESE TIPS:

- **Pay complete attention to your driving**, especially in the transition zone before the work zone. An inattentive driver is the most common cause of work zone crashes.
- **Orange is your clue!** Pay attention when you see orange signs, barrels, cones and barricades.
- **Obey all speed signs.** Speed may be reduced in work zones for your safety and the safety of workers.
- **Double your following distance.** Don't tailgate.
- **Get in the correct lane** well in advance.
- Remember, **work zone traffic lanes are often narrow, without shoulders or emergency lanes.**
- When possible, **move over to give workers more room** between them and your vehicle.
- **Be aware of temporary construction accesses** on either side of the road.



- **Watch for construction vehicles and law enforcement** and don't follow them as they move in and out of the work zone.
- **Expect delays — plan for them** — leave early and drive safely through the work zone.
- **Avoid work zones.** When you can, use an alternate route.
- **Know before you go!** Visit [TripCheck.com](https://www.tripcheck.com) or call 5-1-1 to check routes, work zones and road and weather conditions before you head out.



TIPS FOR PEOPLE WALKING, BIKING AND ROLLING THROUGH WORK ZONES

Work zones always provide accommodations or accessible detour routes for people walking, biking or rolling through a construction zone.



THESE SIMPLE GUIDELINES CAN HELP MAKE THE TRIP SAFER AND LESS STRESSFUL:

1. Plan your trip.
2. Visit [TripCheck.com](https://www.oregon.gov/odot/tripcheck) or dial 5-1-1 to determine if construction is occurring along your route.
3. When possible, use an alternate route to avoid work zones.

WHEN BIKING, WALKING OR ROLLING THROUGH A WORK ZONE:

- **Be alert. Be visible. Be patient.**
- **Follow direction given by flaggers.** Flaggers often provide specific instructions for bicyclists and pedestrians.
- **Look for marked detour routes, signs and devices** that may change your normal route.
- **Follow signs** for motor vehicles if you are a bicyclist sharing the road.
- **Stay out of the work area!** Don't walk or ride behind cones, barricades or barrier, unless directed by a flagger.
- **Ride carefully** over rough, uneven terrain. You may need to walk your bike across gravel or unpaved surfaces. Use caution when riding over pavement markers and reflectors.
- **Watch for steel plates in the road.** They may be slippery, especially if wet.
- **Report unsafe conditions** to a flagger or construction official. Contact AskODOT with any questions or concerns at 1-888-Ask-ODOT or visit [oregon.gov/odot/ts](https://www.oregon.gov/odot/ts).

DISTRACTED DRIVING

Ignore all the Buzz. Park your Phone.

THE BUZZ WILL WAIT

Distracted drivers pose a deadly risk to everyone on the road. Drivers engage in a range of distracting activities from eating, grooming, reading, talking, or

texting on their phones. Hands-free is not risk free. Distracted driving is ANY activity that could divert your attention away from the primary task of driving. *There are four types of distraction:*

- 1. VISUAL** - Looking at something other than the road.
- 2. AUDITORY** - Hearing something not related to driving.
- 3. MANUAL** - Handling something other than the wheel.
- 4. COGNITIVE** - Thinking about something other than driving.

Many of the potential distractions drivers face while behind the wheel involve more than one type of distraction including both a sensory and mental component.

TIPS TO AVOID DISTRACTIONS

- **Turn it off and stow it.** Turn your phone off or switch it to silent mode before you get in the car. Then stow it away so it's out of reach.
- **Use a cell phone app** that automatically notifies callers when you're driving and stops tempting notifications.
- **Pull over.** If you need to make a call, pull over to a safe area away from traffic.
- **Ask a passenger to operate the phone** for you while you're driving.
- **X the Text.** Don't ever text and drive, browse online, or read your email or social media while driving. It's dangerous and against the law in most states. Even voice-to-text isn't risk-free.
- **Prepare your route.** If using a GPS device, enter your destination before you start to drive. If you prefer a map or written directions, review them in advance. Pull over to a safe area away from traffic if you need to review.
- **Mind the kids.** Pull over to a safe place to address situations involving children in the car.
- **Secure your pets.** Unsecured pets can be a big distraction in the car.
- **Focus on driving.** Multi-tasking behind the wheel is dangerous. Refrain from eating, drinking, reading, grooming, smoking, and any other activity that takes your attention off the road.

When you're driving, ignore all the buzz. No message is worth putting the lives around you at risk.

For more information about Distracted Driving visit:

oregon.gov/odot/safety/pages/distracted.aspx



PROJECT HIGHLIGHT

I-205 Improvements: Abernethy Bridge Project

MAKING THE ABERNETHY BRIDGE EARTHQUAKE READY

Major construction continues to upgrade the Abernethy Bridge—a critical link on I-205 connecting West Linn and Oregon City—to withstand a major earthquake. When complete, the Abernethy Bridge will be the first earthquake-ready interstate bridge over the Willamette River in the Portland area.



As of spring 2026, we are approximately 70% complete with construction. Through the summer, people should expect lane and ramp closures on I-205 and local adjacent streets along with occasional overnight closures of OR 99E and OR 43.

We will continue to focus on minimizing traveler delays and impacts and look forward to completing this seismically-resilient lifeline bridge in 2027.

For more information visit the project website: i205corridor.org



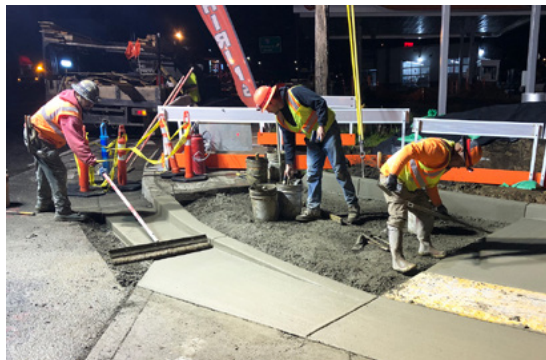
R1 ADA Curb Ramps Improvements Project

EXPECT WIDESPREAD SIDEWALK CURB UPGRADES ALONG STATE HIGHWAYS THIS SUMMER

We are bringing 25,000+ sidewalk curb ramps into compliance with Americans with Disabilities Act (ADA) accessibility standards throughout Oregon. We are committed to new standards for accessible routes through work zones, outreach, and addressing public concerns. People with disabilities and everyone who uses sidewalks along our highways will benefit from these upgrades.

In the Portland-metro area, we have multiple projects in construction this summer addressing over 1,500 sidewalk curb ramps. People will see short-term sidewalk closures with ADA-accessible pedestrian detours across the region.

For more information visit, the project website: R1ADA.org



PROJECT HIGHLIGHT

I-5 Rose Quarter



I-5 SOUTHBOUND THROUGH THE ROSE QUARTER WILL CLOSE FOR REPAIR AND MAINTENANCE THIS FALL

This project will improve safety and mobility at Oregon's top bottleneck on a 1.8 mile stretch where three major interstates converge on I-5 between I-405 and I-84. The project will also strengthen local connections and support long-

term community revitalization in the Albina neighborhood. Construction is currently underway to preserve existing infrastructure like new stormwater facilities and earthquake safety improvements preparing the project area for future construction phases.

This September, I-5 southbound through the Rose Quarter will be completely closed for up to five weeks for overdue safety improvements to replace the rutted, cracked and potholed surface with new concrete.

Plan ahead — expect significant delays and unpredictable travel times. If possible, avoid rush hour, use transit, walk, bike, carpool, or stay home to help the system function better for those who cannot change their trip.

For more information and to sign up for construction alerts, visit the project website: i5rosequarter.org/



KNOW BEFORE YOU GO

We're committed to developing a modern, reliable transportation system that serves all Oregonians.



This map shows major road construction projects planned along Northwest Oregon highways during the summer 2026 construction season and helps you avoid delays.

Use these resources so you "Know Before You Go."
We will help you get there.

Follow us on X:

@OregonDOT

and Instagram:

@OregonDot

Like us on Facebook:

fb.com/OregonDOT



**In-state Travel Information
updated 24/7:**

**Call 5-1-1
or 1-800-977-6368**

TripCheck.com

**ODOT's Website
oregon.gov/ODOT**

INTERSTATE HIGHWAYS
INTERSTATE 5 (Pacific Highway)

1 I-5 Rose Quarter Improvements
I-5 in Portland between I-84 and I-405 – Improves safety and mobility at the state’s top bottleneck, strengthens local connections and supports long-term community revitalization in the Albina neighborhood. Current work focuses on preserving existing I-5 infrastructure and preparing the project area for future construction phases. **Expect intermittent nighttime lane closures, shoulder closures, an overnight closure of I-5 in both directions in summer, and a 24/7 closure of I-5 southbound for up to 5 weeks beginning in September.** Estimated completion of Phase 1 A: end of 2026. i5rosequarter.org

2 I-5 Aurora-Donald Interchange Phase 2
I-5 and Ehlen Road interchange area, Exit 278 – Addresses congestion and makes safety improvements by building an improved interchange and widening I-5 at Exit 278. **Expect nighttime lane closures and delays, shifted traffic. Speed limit reduced to 55 mph in the work zone – use caution.** Estimated completion: 2027. direc.to/jkQW

3 I-5 Portland Metro ITS & VMS Upgrades
Portland Metro Region – Replaces existing RealTime Signs at multiple locations on I-5 to maintain system operations. **Expect directional closures of I-5.** Estimated completion: 2026. Bit.ly/I-5VariableSigns

4 I-5 Boone Bridge Joint Replacement
Wilsonville – Replaces two failing bridge expansion joints in the northbound lanes of I-5 Boone Bridges. **Expect nighttime closures of I-5 NB and the Miley Road ramp.** Estimated completion: 2026. Bit.ly/BBjointrepair

INTERSTATE 84 (Columbia River Highway)

5 I-84 Eastbound McCord Creek Bridge Replacement
West of Cascade Locks – Replaces an aging bridge carrying I-84 east over McCord Creek, eliminating a dip in the road and increasing safety, earthquake resilience and the lifespan of the highway. **Expect I-84 reduced to one lane in each direction and NE Frontage Road on-ramp to eastbound I-84 closed from spring to fall 2026.** Estimated completion: fall 2026. i84GorgeConstruction.org

6 I-84: I-5 to Hood River All Roads Transportation Safety (ARTS)
Between I-5 and Hood River – Installs new safety features at multiple I-84 interchange ramps between downtown Portland and Hood River by upgrading lights, signals, signs and trimming overgrown vegetation. **Expect periodic daytime, nighttime single lane, shoulder, ramp closures.** Estimated completion: 2026. i84GorgeConstruction.org

7 I-84 (Multi-Use Path) Jordan Road Tunnel - Sandy River Delta Troutdale
 – Builds a new multi-use path parallel to Jordan Road from the pedestrian tunnel under I-84 to the Sandy River Delta, increasing safer connections for people who walk, bike or roll. **Expect periodic daytime, nighttime single lane, shoulder, ramp closures. Expect periodic delays on I-84 westbound exit ramp at (Exit 18) with flagger control on Jordan Road.** Estimated completion: 2026. i84GorgeConstruction.org

INTERSTATE 205 (War Veterans Memorial Highway)

8 I-205 Improvements: Abernethy Bridge Project
Willamette River between Oregon City and West Linn – Widens and seismically upgrades the bridge, realigns on- and off-ramps adjacent to the bridge, improves bike/ped connections and built a new roundabout (opened August 2023). **Expect periodic overnight lane and ramp closures and weekend directional closures of I-205 late in the year.** Estimated completion: 2027. i205corridor.org

9 I-205 All Roads Transportation Safety (ARTS)
Portland – Installs safety upgrades at multiple I-205 interchange ramps between the Columbia River and SE 82nd Drive. **Expect lane closures.** Estimated completion: 2026. tinyurl.com/I205ARTS

U.S. HIGHWAYS
U.S. 26 (Mt. Hood Highway)

10 U.S. 26 Outer Powell Transportation Safety Improvements (Phase 2)
Between I-205 and just east of SE 174th Avenue – Constructs improvements to busy outer SE Powell Boulevard that will reduce the frequency and severity of crashes and help vehicles, pedestrians, transit, transit users and bicyclists share the road with fewer conflicts. **Expect lane closures, traffic shifts, shoulder closures, detours and up to 20-minute traffic stops with flagger control, weekdays during the day and at night.** Estimated completion: 2030. OuterPowellSafetyProject.org

U.S. 30 (Lower Columbia River Highway)

11 U.S. 30 Paving
Rainier to Wonderly Road – Repairs and paves this section of highway to give users a smoother drive. **Expect day work, lane and shoulder closures, flaggers directing traffic and ramp closures with detours.** Estimated completion: 2026. direc.to/jkQW

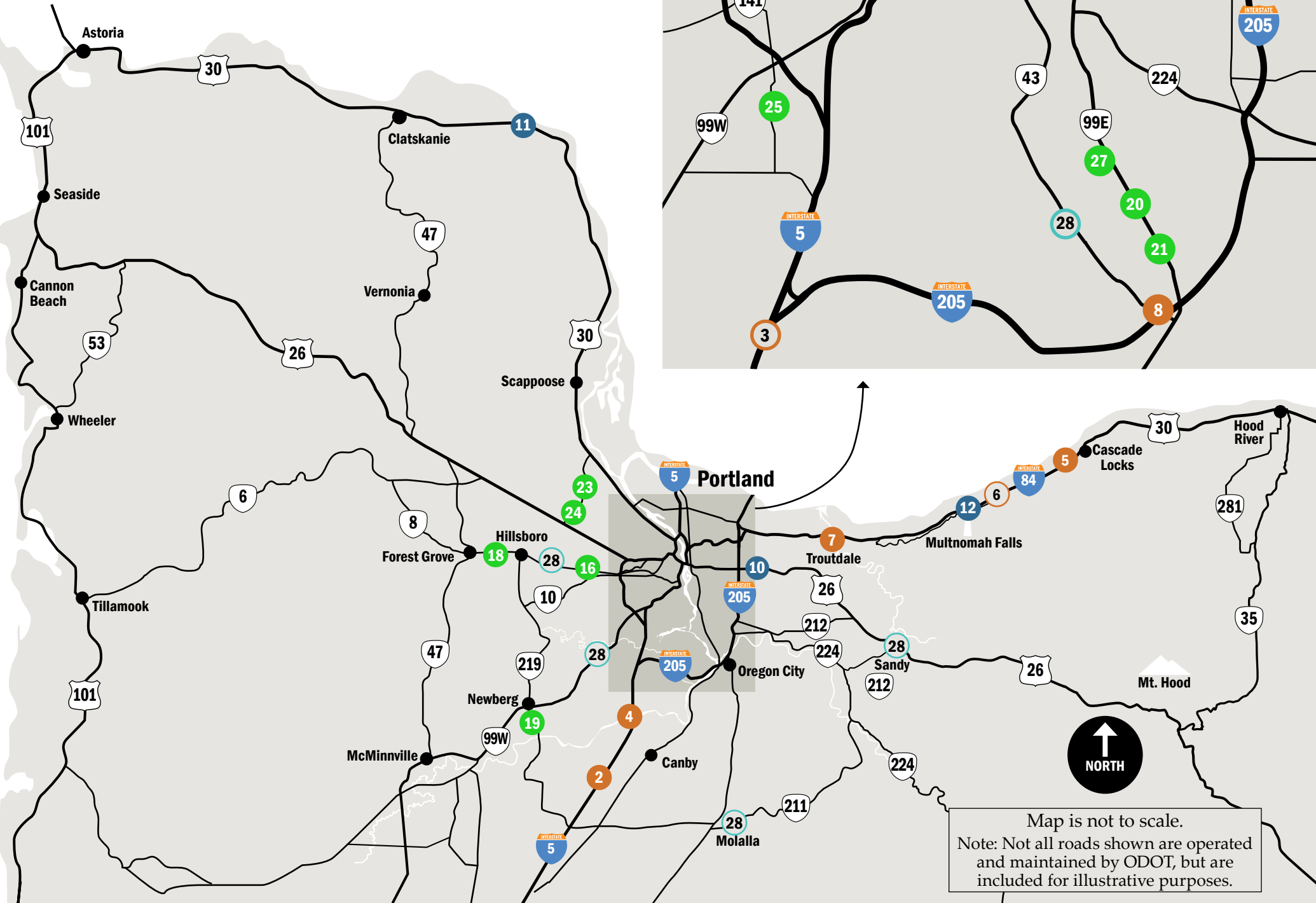
U.S. 30 (Historic Columbia River Highway)

12 Multnomah Falls Viaducts Repair
Historic Columbia River Highway at Multnomah Falls – Repairs and restores the historic elevated roads east and west of the falls (repairs to the west viaduct were completed in May 2025). **Periodic nighttime single lane closures through summer 2026. No impacts to I-84.** Estimated completion: 2026. i84GorgeConstruction.org

2026

CONSTRUCTION PROJECTS Northwest Oregon

For project information visit:
ODOTconstructionPDX.com

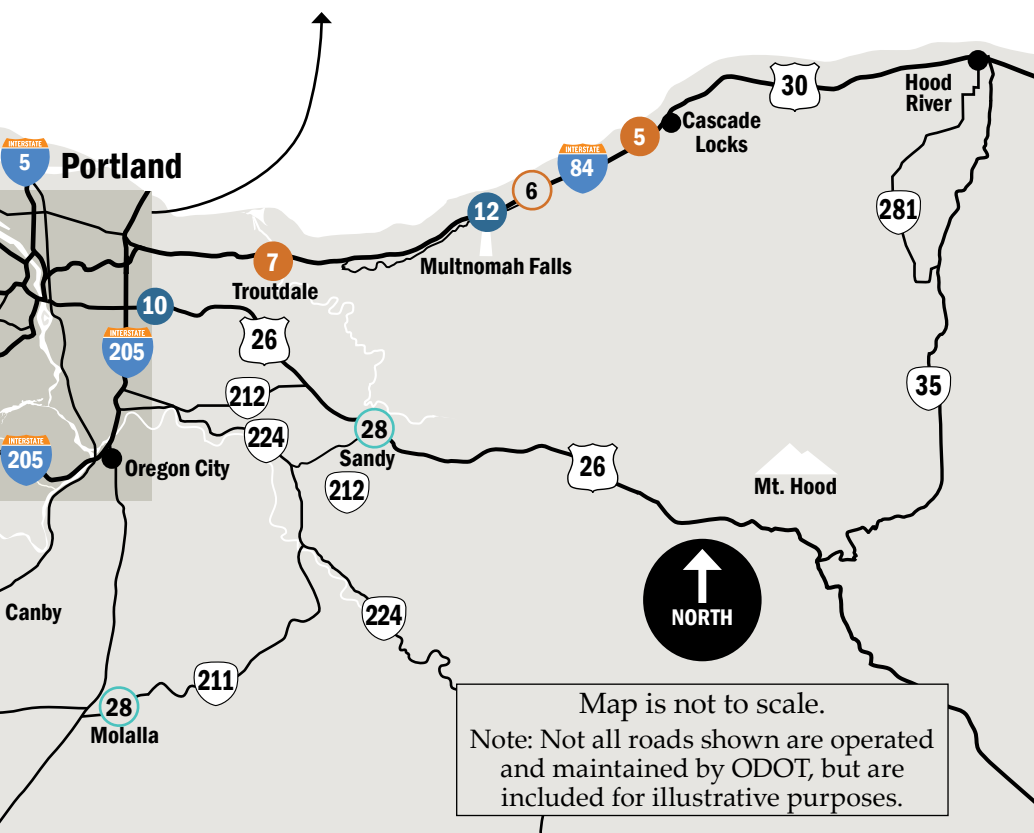
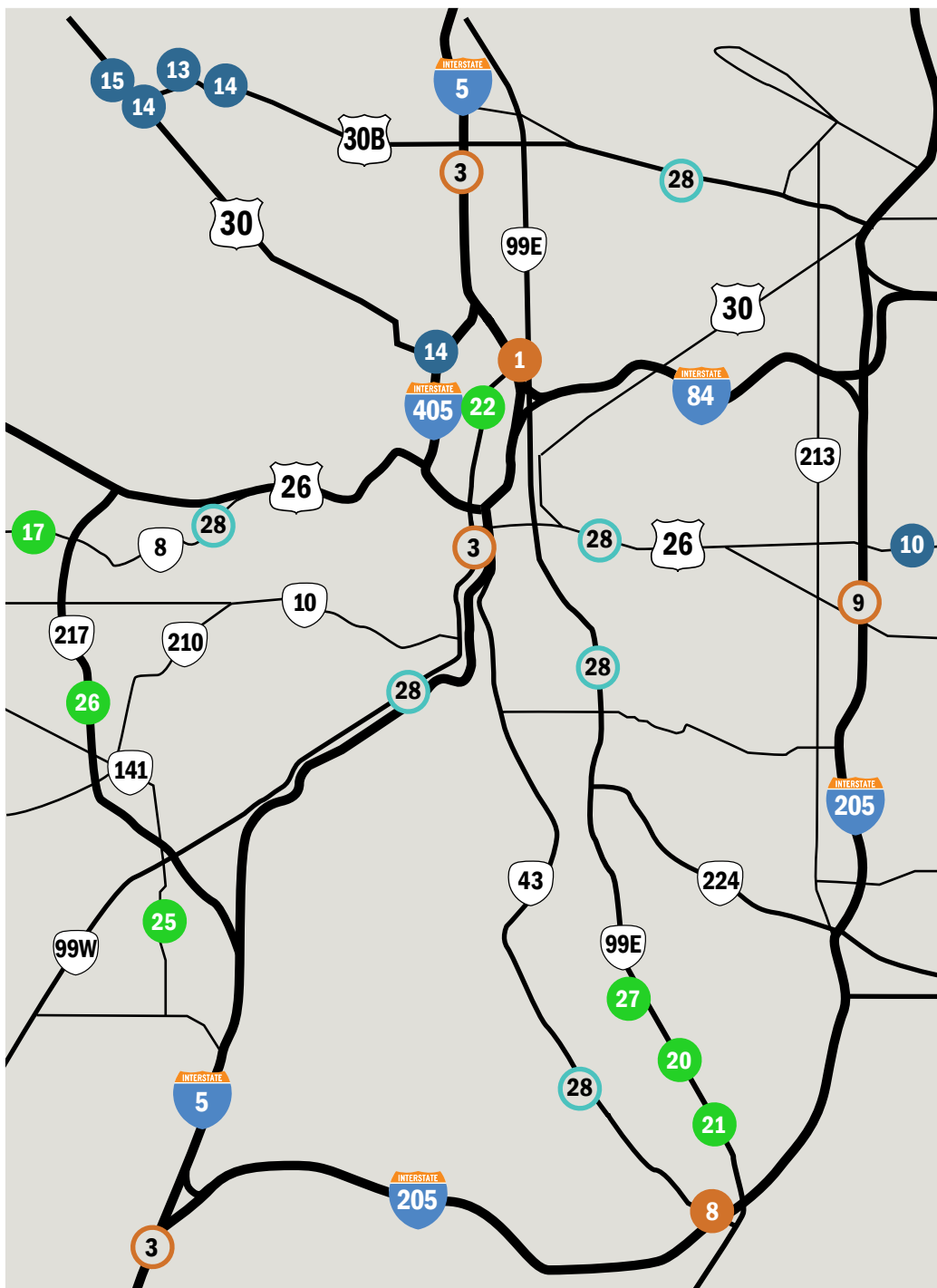


U.S. 30 BYPASS (Lombard Street)

13 St. Johns Bridge Repairs
North Portland, Cathedral Park – Repairs the concrete pier columns and arches under the St. Johns Bridge to protect the bridge’s internal frame and reinforcements from corrosion. **Expect pedestrian and visual impacts and visual impacts at Cathedral Park.** Estimated completion: 2026. bit.ly/stjohnsbridgerepair

14 Willamette River Stormwater Improvement
Northwest Portland, Cathedral Park – Improves our environmental impact by building 15 stormwater treatment facilities to clean stormwater runoff from the Fremont Bridge (I-405), the St. Johns Bridge (U.S. 30 BY) and U.S. 30 in NW Portland. **Expect lane closures and nighttime road closures.** Estimated completion: 2028. tinyurl.com/Willamette-Stormwater-Project

15 U.S. 30 Bypass Bridge over Private Drive
Northwest Portland – Restores the bridge on NW Bridge Avenue northwest of the St. Johns Bridge. **Expect up to nine days and nights of full closure.** Estimated completion: 2026. bit.ly/US30BY-Bridge



STATE HIGHWAYS
OR 8 (Tualatin Valley Highway)

16 OR 8 Fiber Optic Cable Project
198th Avenue to OR 217 (Beaverton and Aloha) – Installs new overhead and underground fiber optic cable where gaps exist along TV Highway (OR 8) in this section. **Expect short-term single lane, shoulder and bike lane closures during the day and night, temporary sidewalk and crosswalk closures.** Estimated completion: 2026. OR8construction.org

17 OR 8 Canyon Road Pedestrian Safety Project
Hall Boulevard to Cedar Hills Boulevard (Beaverton) – Improves pedestrian safety on SW Canyon Road (OR 8) from SW Hall Boulevard to SW Cedar Hills Boulevard in Central Beaverton, including a new enhanced crosswalk at Rose Biggy Avenue. **Expect short-term lane and shoulder closures on Canyon Road and on side streets and temporary sidewalk closures.** Estimated completion: 2026. OR8construction.org

18 OR 8 Traffic and Pedestrian Improvements
Hillsboro and Forest Grove – Improves safety in four locations on OR 8 in Hillsboro and Forest Grove including new sidewalks, an enhanced pedestrian crosswalk, new lighting and upgraded traffic signals. **Expect short-term lane and shoulder closures on OR 8 and on side streets and temporary sidewalk closures.** Estimated completion: 2026. OR8construction.org

OR 18 and OR 219 (Newberg-Dundee Bypass Phase 2A)

19 Newberg-Dundee Bypass Phase 2A
Newberg – Addresses congestion and makes safety improvements by building the new OR 219 and OR 18 interchange. **Expect shoulder and lane closures, flaggers directing traffic as needed, signed detours, pedestrian detours, and delays. Plan for one weekend closure of the ramp to OR 18.** Estimated completion: 2027. direc.to/jkQW

OR 99E (Pacific Highway East)

20 OR 99E Signal Timing
Milwaukie – Improves signal timing in the OR 99E corridor. **Expect lane closures.** Estimated completion: 2026. bit.ly/OR99ESignals

21 OR 99E Crossing at Glenn Echo Road
Gladstone – Installs an enhanced pedestrian crossing on OR 99E south of Glen Echo Avenue in Gladstone to improve safety. **Expect lane closures.** Estimated completion: 2026. bit.ly/GlenEchoCrossing

OR 99W (Pacific Highway West)

22 OR 99W Steel Bridge Ramp Strengthening
Northwest Portland – Strengthens the ramp that connects NW Naito Parkway to the Steel Bridge to meet current standards. **Detour expected at night.** Estimated completion: 2026. bit.ly/SteelBrRamp

OR 127 (Cornelius Pass Highway)

23 OR 127 Cornelius Pass Highway and U.S. 30 ITS Improvements
Northwest Portland – Upgrades lighting, signal equipment, and signage. Installs new traffic cameras, variable message signs, and an activated intersection warning system, bringing it up to the latest Oregon Department of Transportation (ODOT) standards. **Expect lane and shoulder closures at night.** Estimated completion: 2026. Tinyurl.com/CorneliusPassUS30

24 OR 127 Rock Creek Bridge Replacement
Near the Washington County/Multnomah County Line – Replaces the bridge over Rock Creek. **Expect a full closure of Cornelius Pass Road at Rock Creek, with a signed detour from July 15 – Sept. 29.** Estimated completion: 2026. tinyurl.com/CornPassBridge

OR 141 (SW Hall Boulevard)

25 OR 141 SW Fanno Creek Trail and SW Omara Street Pedestrian Safety Improvements
SW Fanno Creek Trail and SW Omara Street (Tigard) – Installs and upgrades two Rectangular Rapid Flashing Beacons, at SW Fanno Creek Trail and SW Omara Street. **Expect lane and shoulder closures on Hall Boulevard and side streets.** Estimated completion: 2026. tinyurl.com/HallatFannoCreekTrailandOmara

OR 217 (Beaverton-Tigard Highway)

26 OR 217 Landscaping Project
Beaverton and Tigard – Installs new landscaping in targeted areas along and near OR 217. **Expect short-term nighttime lane closures on OR 217.** Estimated completion: 2026. hwy217.org

OR 224 (Clackamas Highway)

27 OR 224 SE 17th to Rusk Road Improvement
Milwaukie – Paves and makes safety improvements for pedestrians and people biking at Monroe Street Greenway. **Expect ramp closures and lane closures.** Estimated completion: 2026. tinyurl.com/OR224-17toRusk

VARIOUS REGION 1 HIGHWAYS OR LOCAL ROADS

28 ADA Ramps Improvement Project
Throughout the Portland Metro area, Hood River County – Installs upgraded sidewalk curb ramps that meet accessibility standards in over 1,700 locations throughout the Portland-metro area, benefiting everyone who uses sidewalks. **Expect short-term lane and sidewalk closures with pedestrian detours.** Estimated completion: 2027 (for projects in construction in 2026). r1ADA.org

During construction, pedestrians have access through and around work zones. Pedestrian detours are accessible to people with disabilities.

For ADA (Americans with Disabilities Act) or Civil Rights Title VI accommodations, translation/interpretation services, or more information call 503-731-4128, TTY 800-735-2900 or Oregon Relay Service 7-1-1.

Podemos proveer la información en esta publicación en español. Para recibir la información en español, por favor llámame al 503-731-4128.

Если вы хотите, чтобы информация об этом проекте была переведена на русский язык, пожалуйста, звоните по телефону 503-731-4128.

如果您想瞭解這個項目翻譯成 繁體中文 的相關資訊，請致電 503-731-4128.

이 프로젝트에 관한 한국어로 된 자료 신청방법 전화: 503-731-4128. Nếu quý vị muốn thông tin về dự án này được dịch sang tiếng Việt, xin gọi 503-731-4128