

Granite Construction:
ADA Curb Ramp Schedule:
Week of Nov. 11-18, 2022:

Schedule Subject to Change

**on previous week's schedule*

Next week work is scheduled at:

- North Main at Wimer, SW corner*
- North Main at Van Ness, NE corner*
- North Main at Manzanita, SW corner (possible)
- North Main at Skidmore, SE corner*
- North Main at Plaza entrance front of Mix Bakery*
- North Main at Oak, ramp from Bowmer Theater*
- Lithia Way at 1st Street – SE corner*

- Siskiyou Blvd. at Harmony, SE corner*
- Siskiyou Blvd at Normal, NE corner*
- Siskiyou Blvd. at Clay, SE corner
- Siskiyou Blvd. at Tolman, NW corner*

- Jefferson at Washington, (east Ashland near I-5)*



We're building curb ramps in batches, or stages, so you might see some periods of inactivity.

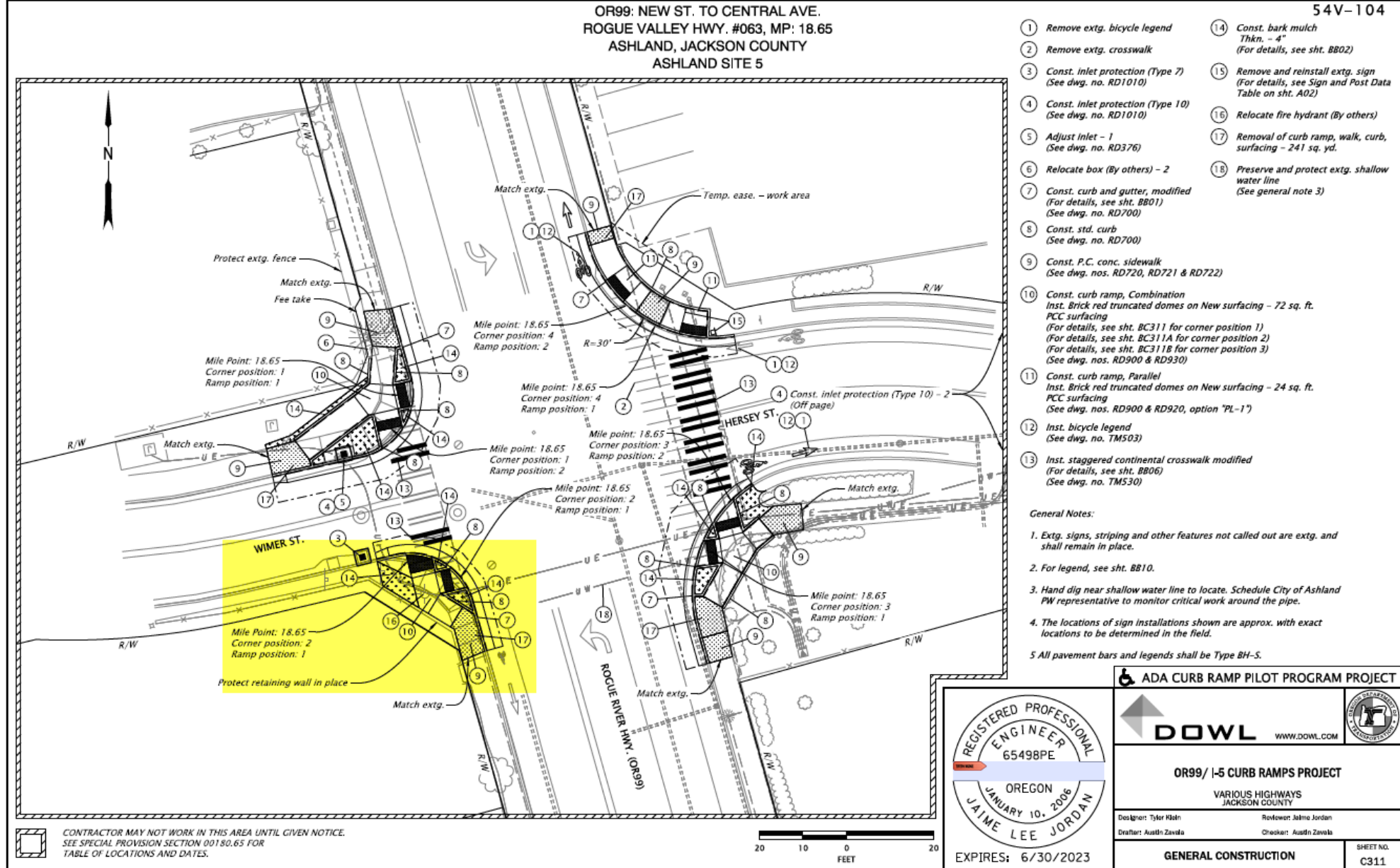
A portion of our work is weather dependent and our schedule may change – visit [TripCheck.com](https://www.tripcheck.com) for the most up to date information on road conditions and traffic.

If you have concerns or would like to request us to look at accessibility issues at specific locations on our transportation system, [please let us know!](#)

North Main at
Wimer, SW
corner



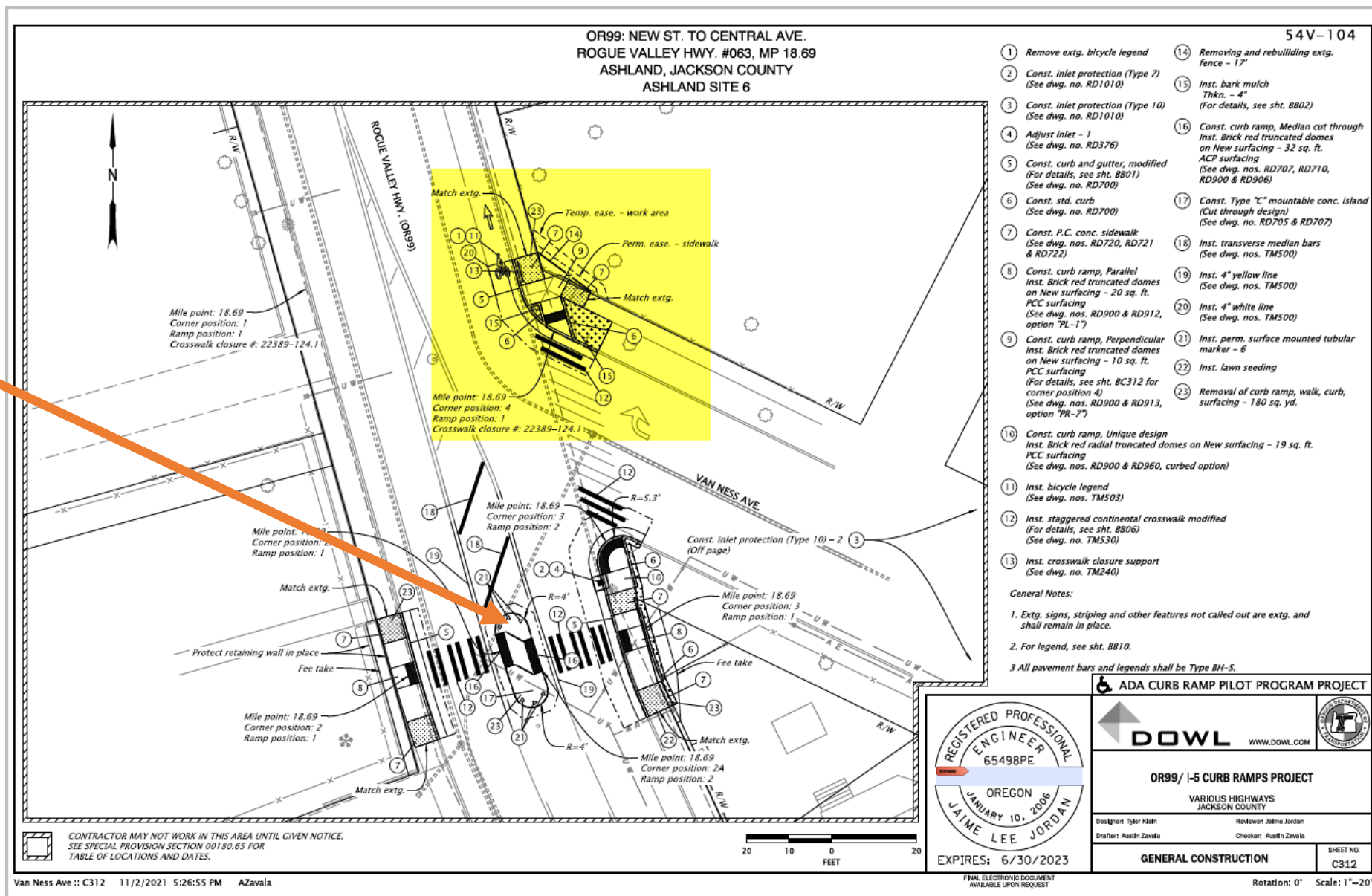
North Main at
Wimer, SW
corner



North Main at Van Ness,
NE corner.



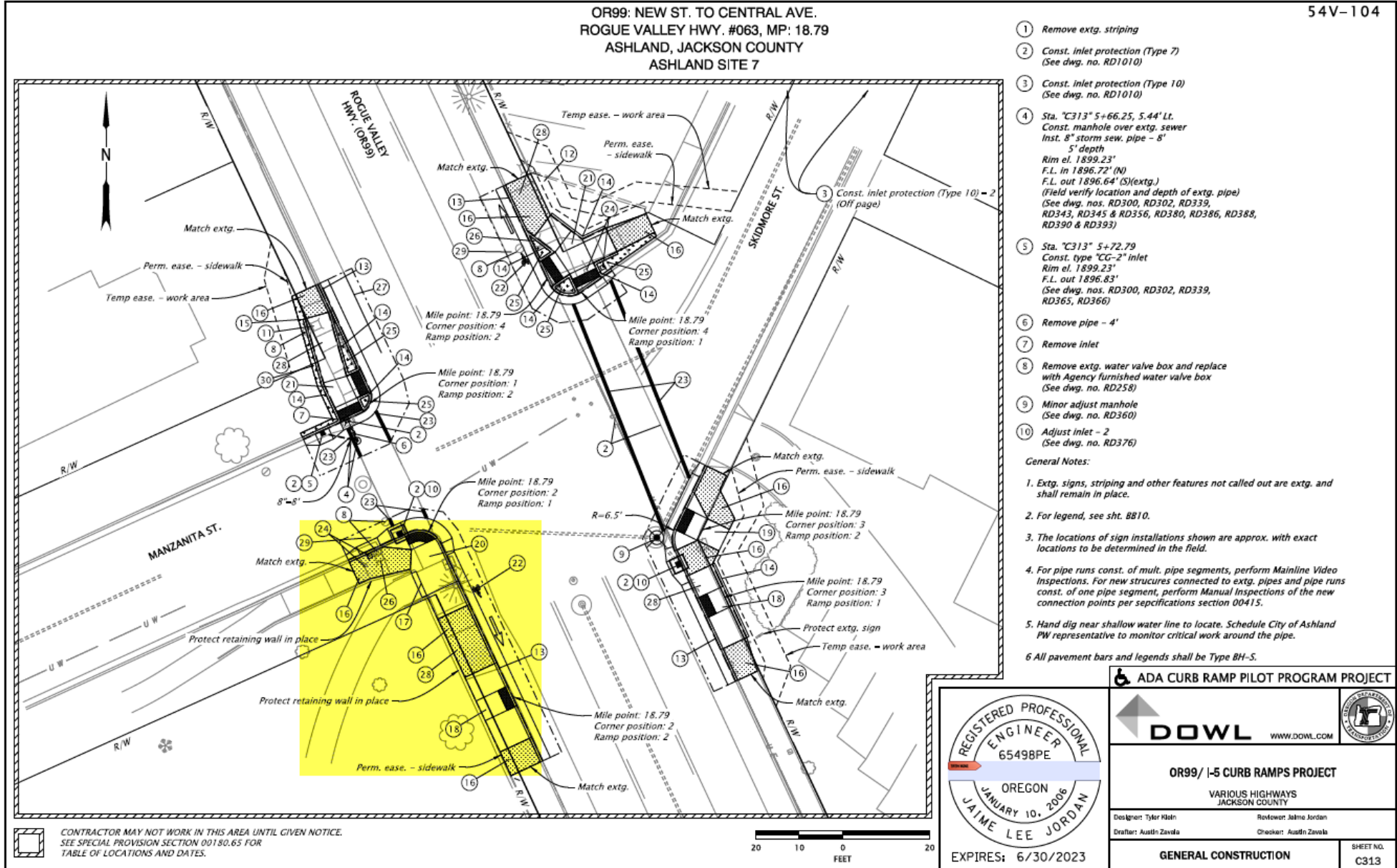
To be constructed nearby
Rapid Flashing Beacon for
pedestrians



North Main and Manzanita,
SW corner – Possible this
week



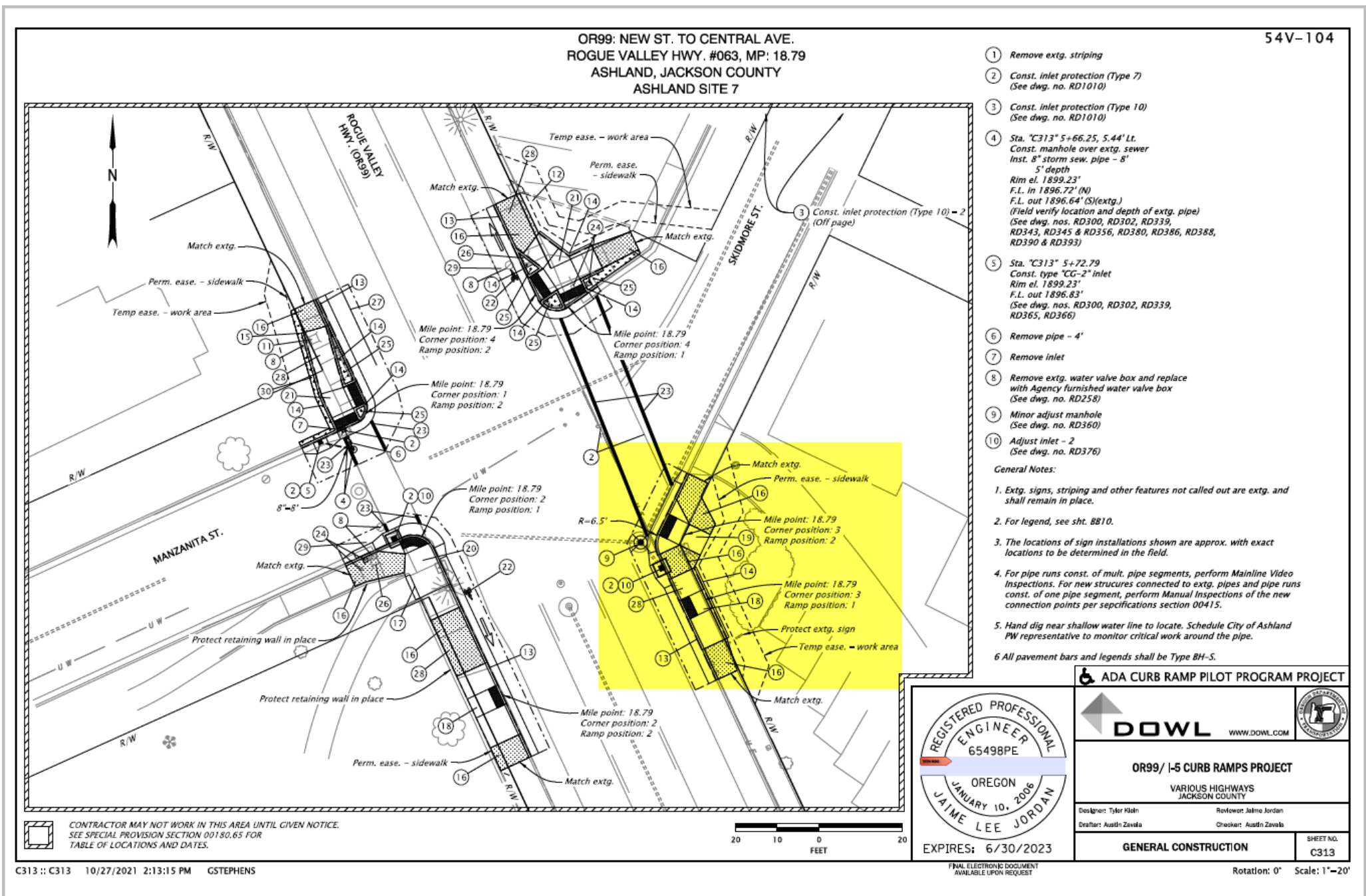
North Main
and
Manzanita, SW
corner –
Possible this
week



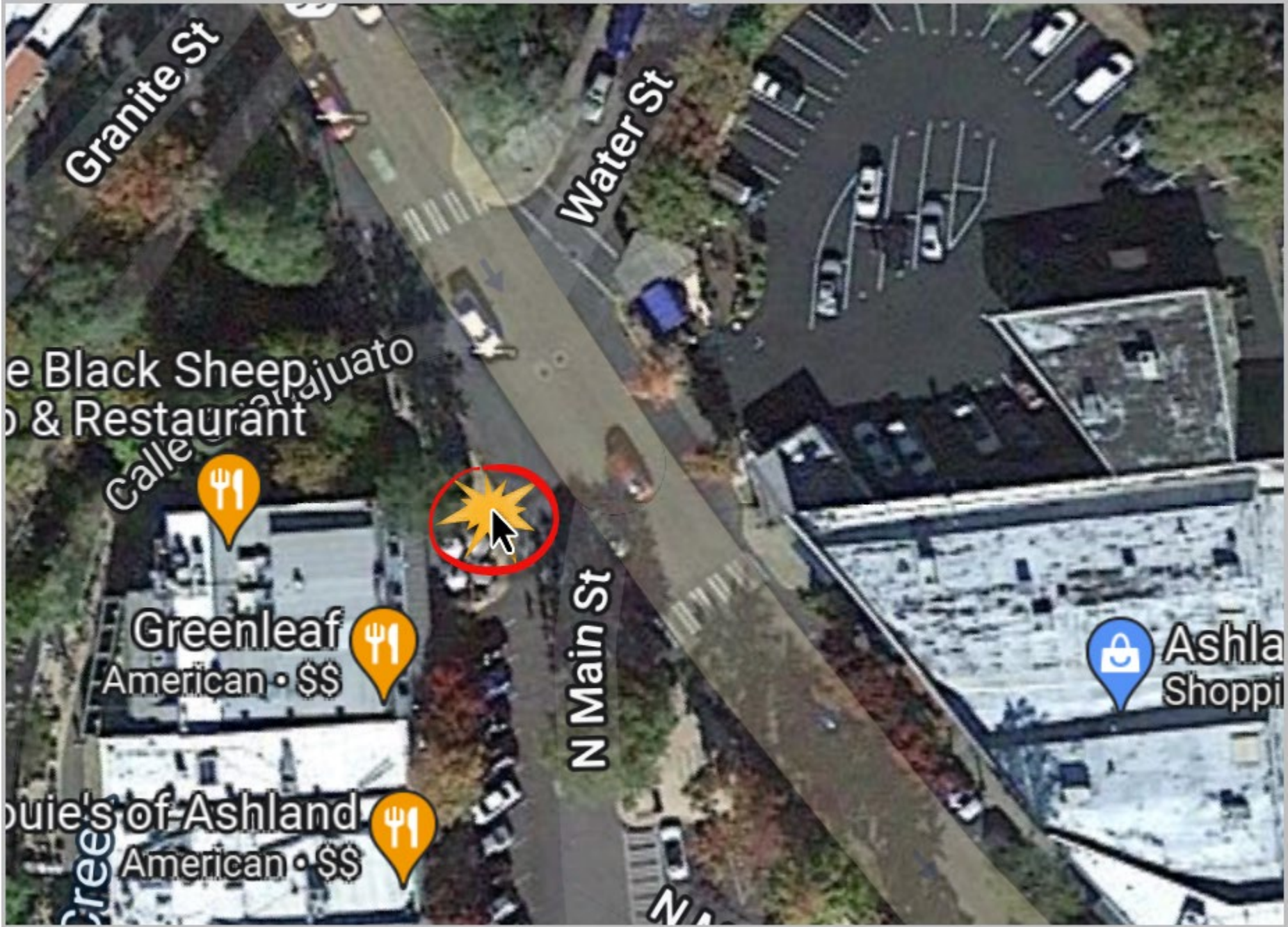
North Main at
Skidmore, SE
corner



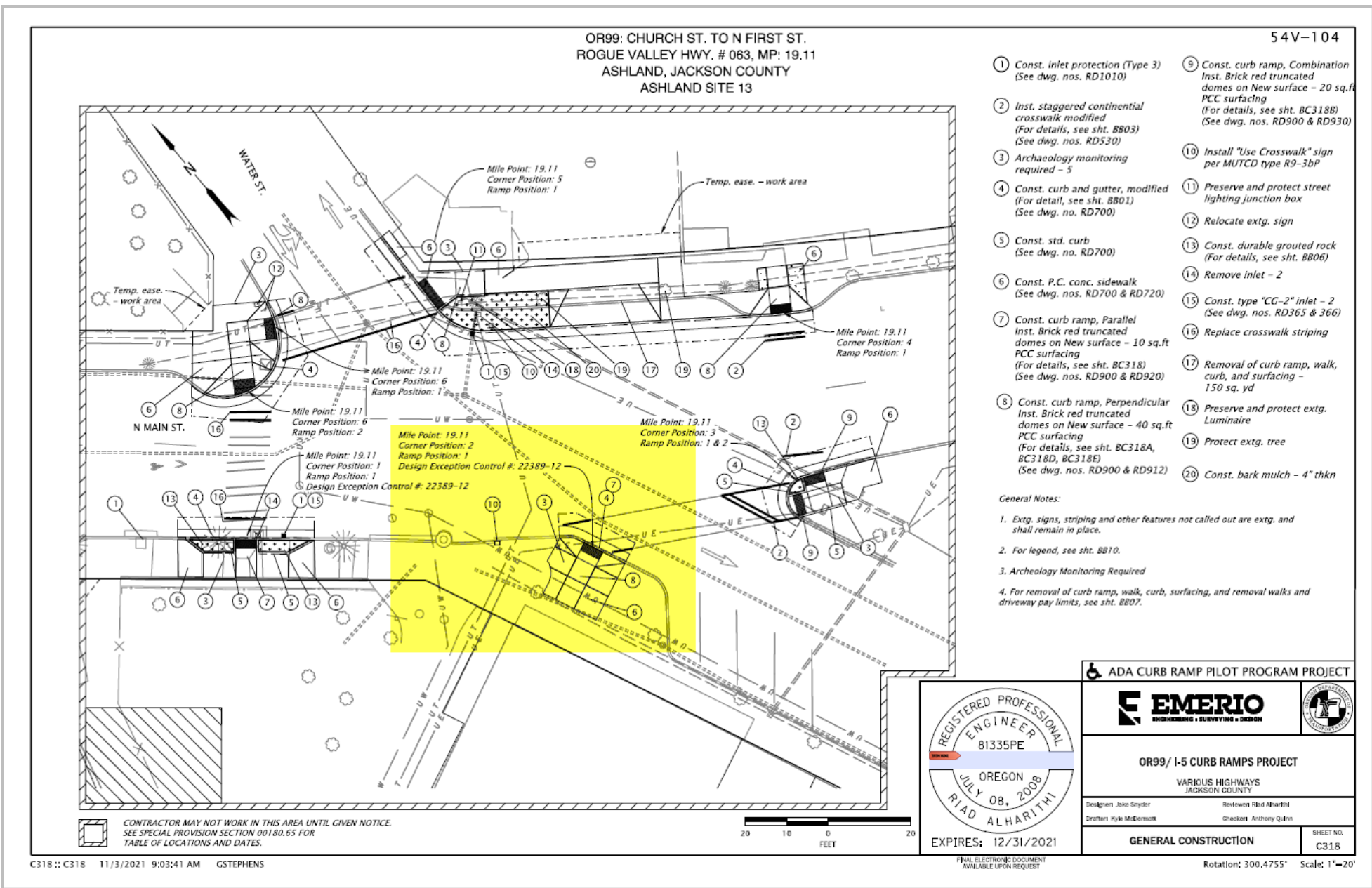
North Main at Van
Ness, NE corner.



North Main at Plaza
entrance, next to Mix
Restaurant



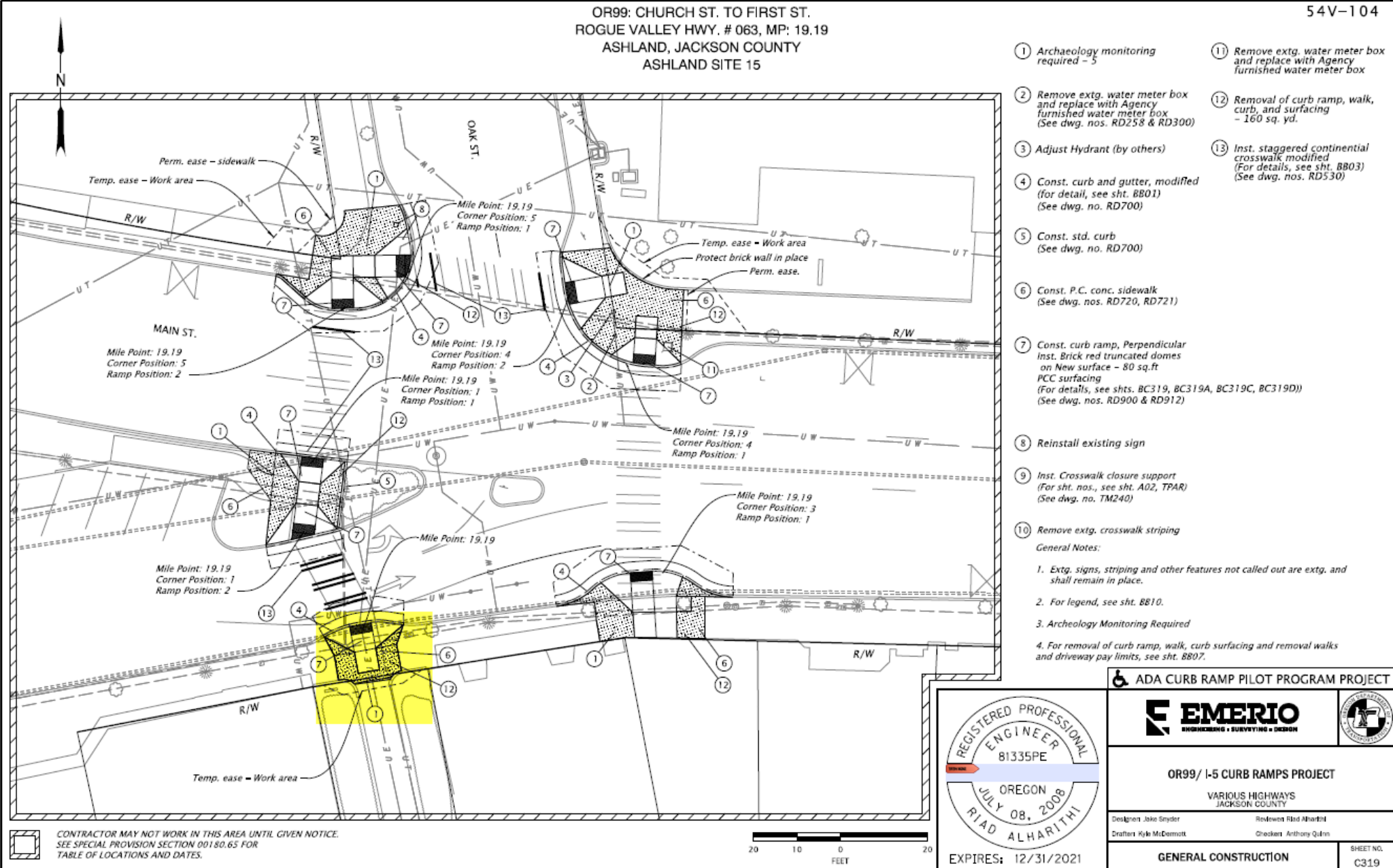
North Main at Plaza
entrance, next to Mix
Bakery



East Main Street and ramp from
the Bowmer Theater



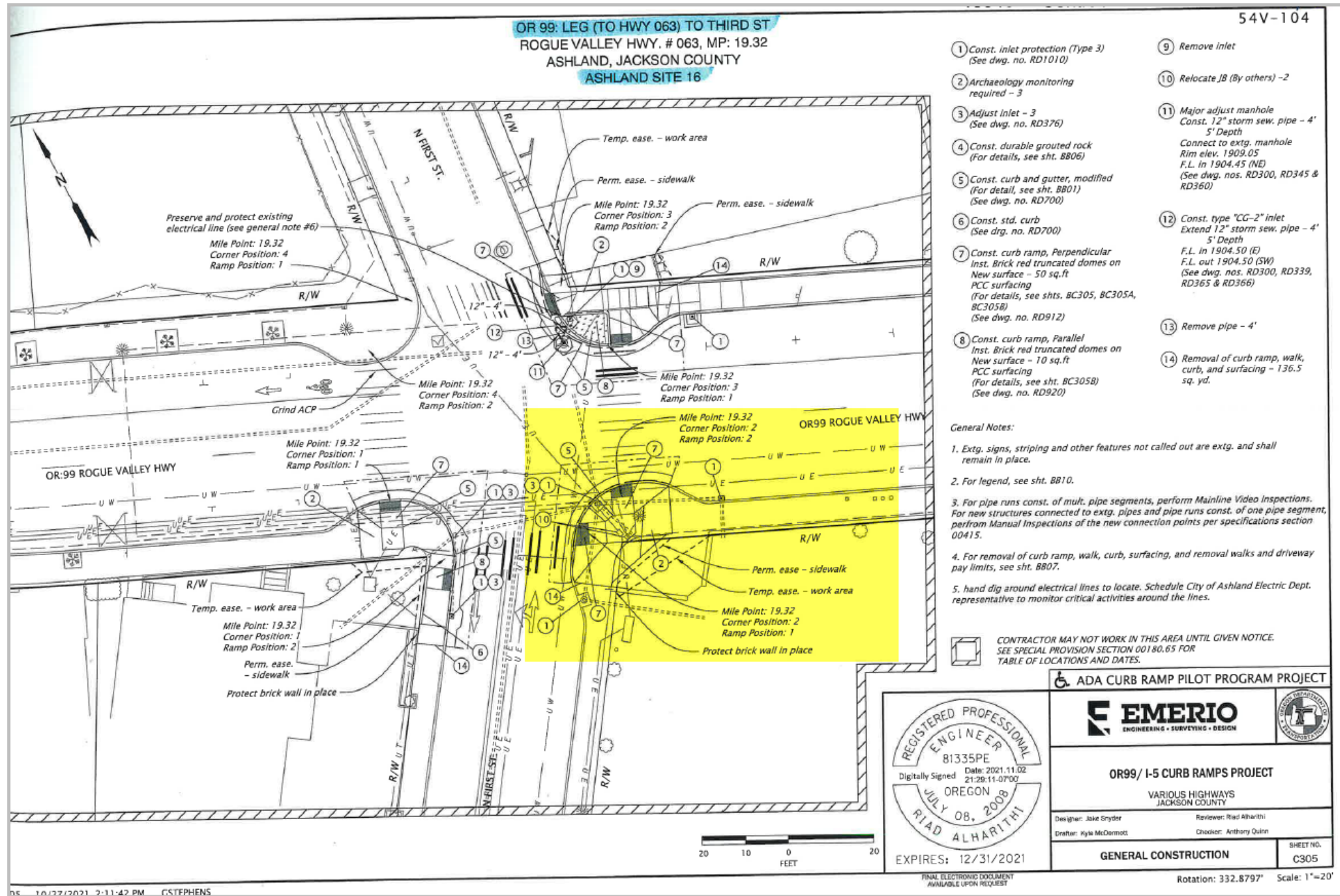
East Main
Street and
ramp from the
Bowmer
Theater



Lithia Way at 1st Street,
SE corner – across from
post office



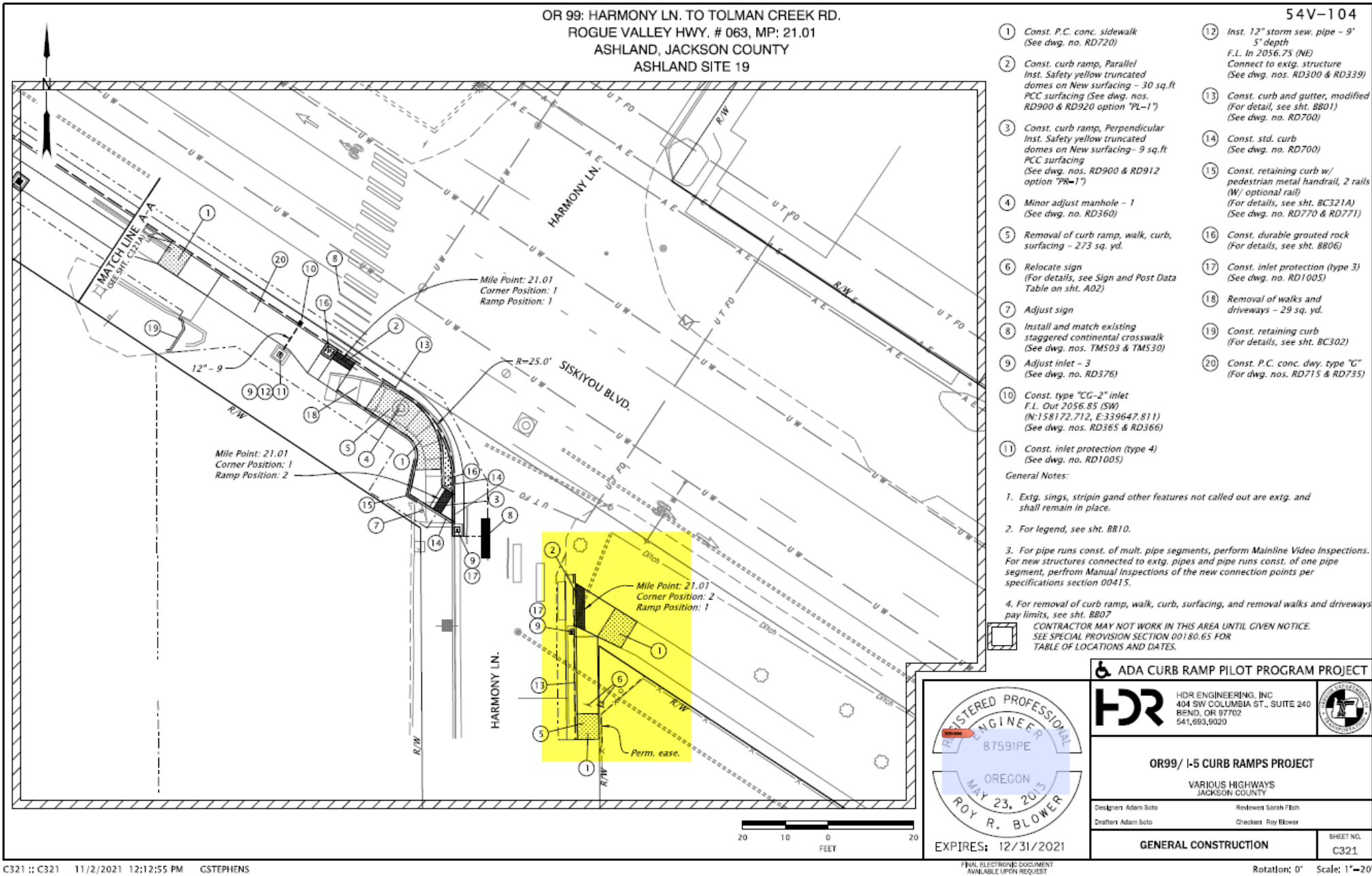
Lithia Way at 1st
Street, SE corner –
across from post
office



Siskiyou Blvd. at
Harmony, SE corner



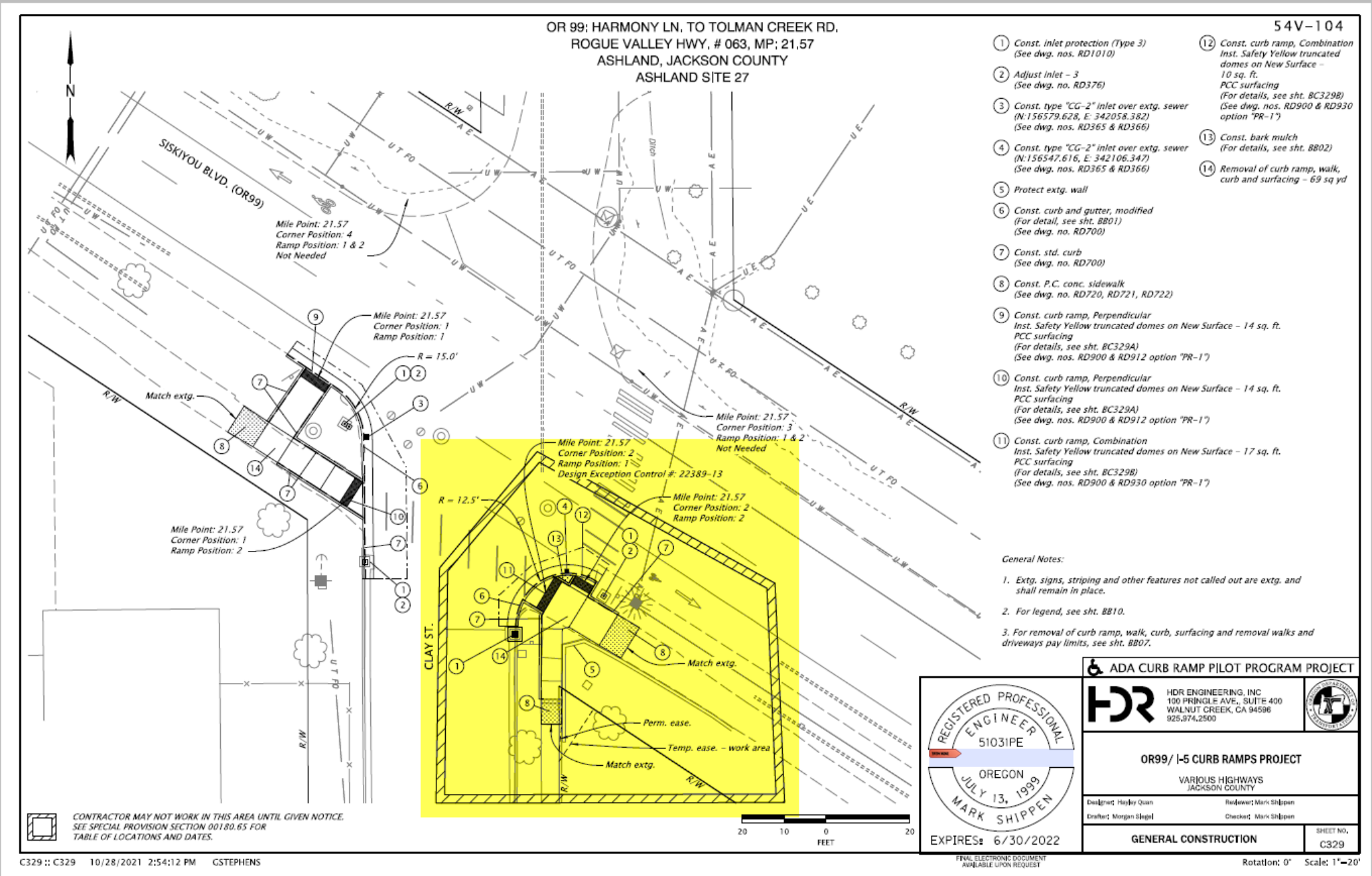
Siskiyou Blvd. at
Harmony, SE corner



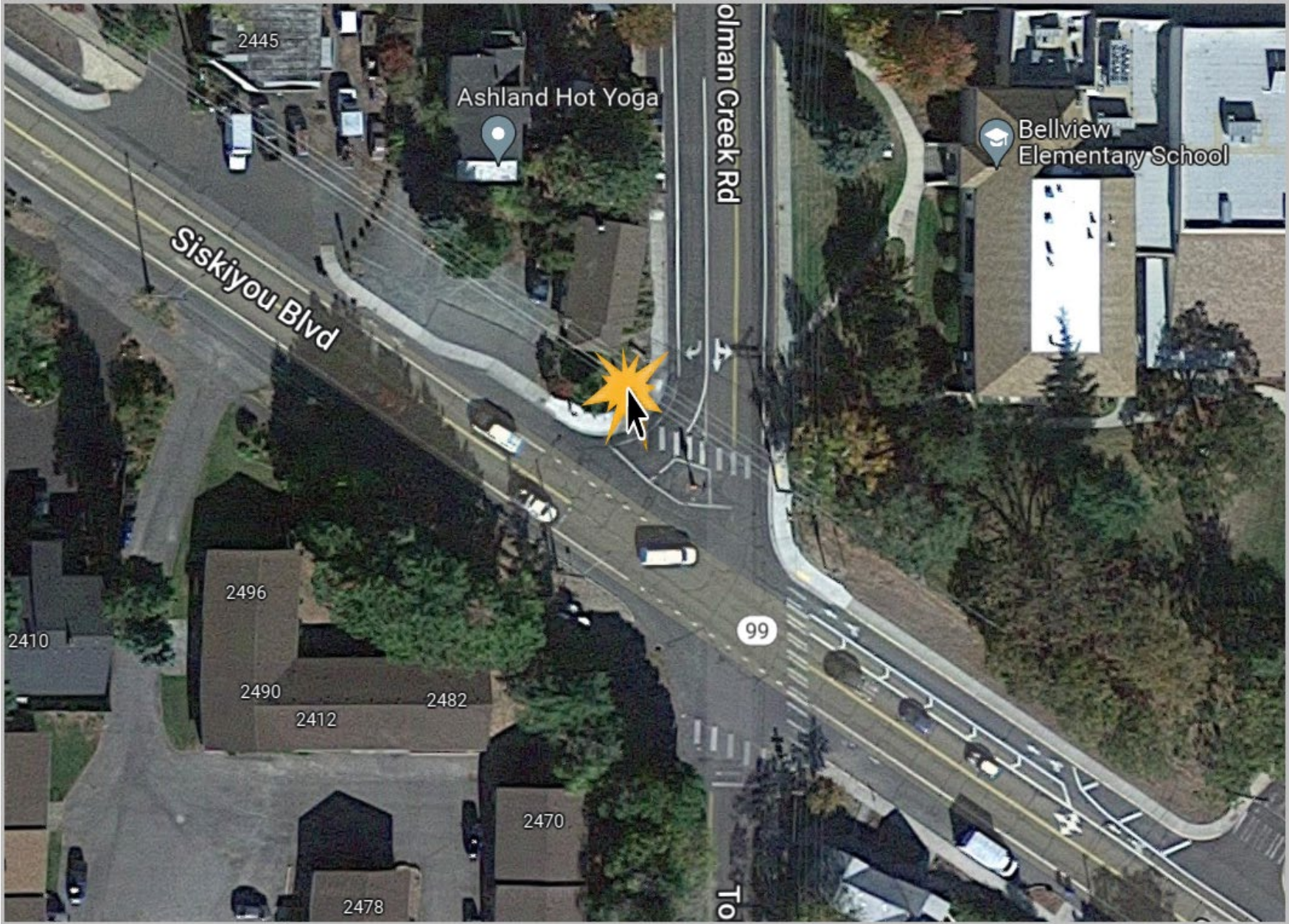
Siskiyou Blvd. at
Clay Street, SW
corner.



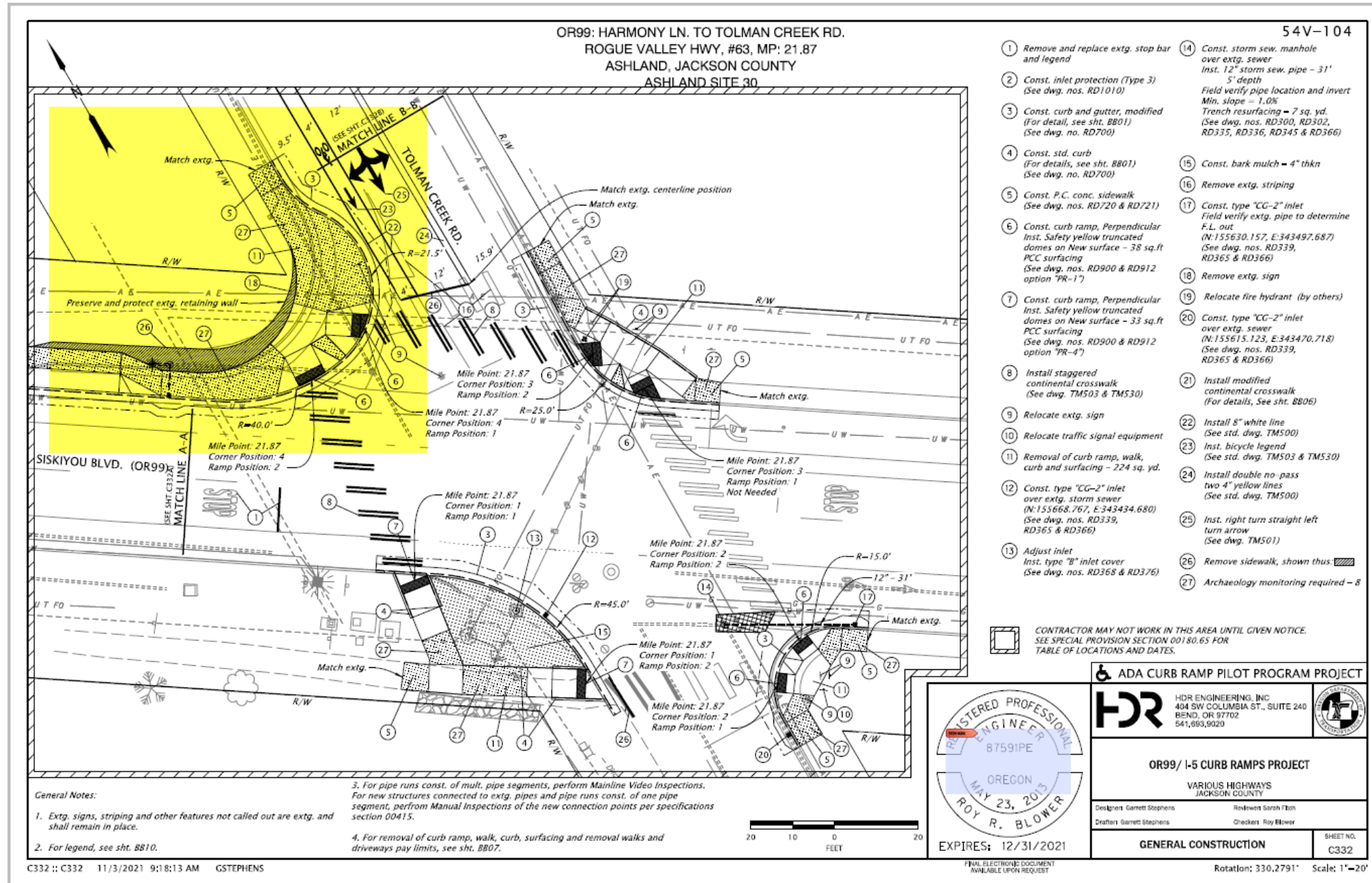
Siskiyou Blvd. at
Clay, SE corner



Siskiyou Blvd at Tolman
Creek, NW corner.



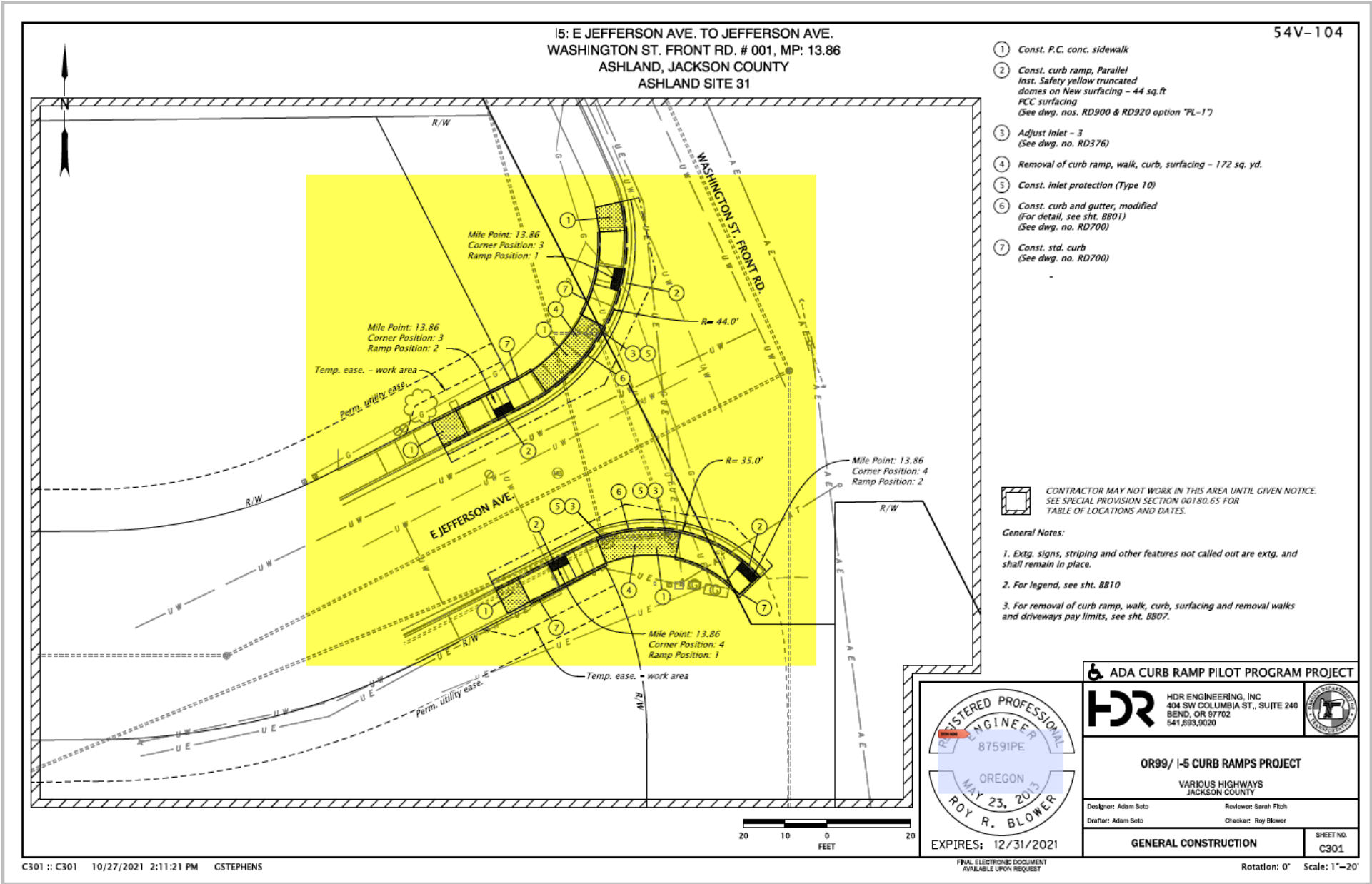
Siskiyou Blvd at Tolman Creek, NW corner.



East Jefferson Ave at
Washington Street, adjacent
to Interstate 5



East Jefferson Ave at
Washington Street,
adjacent to Interstate
5



Washington
Street at Jefferson
Ave.



Washington
Street at
Jefferson Ave.

