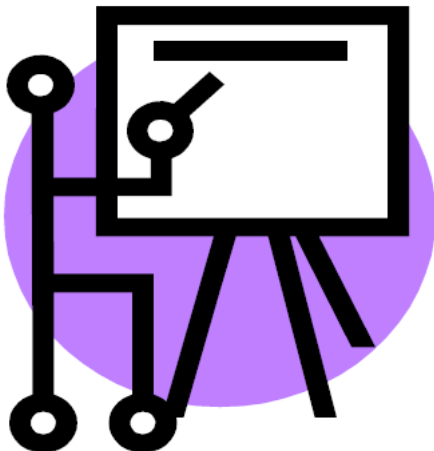


## STIF Low-Income Impact Mitigation Qualified Entities and Public Transportation Service Providers

Each PTSP including QEs receiving STIF funds must complete the STIF Low-Income Impact Mitigation Form and return to the appropriate QE. QEs are responsible for bundling and submitting reports from all PTSPs in their area of responsibility. This table shows the Qualified Entities (QEs) and their applicable Public Transportation Service Providers (PTSPs) specifically for the low-income impact mitigation form requirement. The QE report is due to ODOT no later than 60 days after the end of each Fiscal Year.

Name of QE	STIF Plan Contact	Contact Email	Applicable PTSPs
Benton County	Lisa Scherf	<a href="mailto:lisa.scherf@corvallisoregon.gov">lisa.scherf@corvallisoregon.gov</a>	<ul style="list-style-type: none"> <li>• City of Corvallis</li> <li>• City of Philomath</li> <li>• Oregon Cascades West Council of Government</li> <li>• Oregon State University (Discretionary)</li> </ul>
Confederated Tribes of the Coos, Lower Umpqua and Siuslaw Indians	Jeff Stump	<a href="mailto:jstump@ctclusi.org">jstump@ctclusi.org</a>	<ul style="list-style-type: none"> <li>• Coos County Area Transit</li> </ul>
Confederated Tribes of the Warm Springs Reservation	Michele Stacona	<a href="mailto:michele.stacona@wstribes.org">michele.stacona@wstribes.org</a>	<ul style="list-style-type: none"> <li>• Central Oregon Intergovernmental Council (Formula Only)</li> </ul>
Crook County	Colleen Ferguson	<a href="mailto:colleen.ferguson@co.crook.or.us">colleen.ferguson@co.crook.or.us</a>	<ul style="list-style-type: none"> <li>• Central Oregon Intergovernmental Council (Formula Only)</li> </ul>
Deschutes County	Erik Krop	<a href="mailto:erik.kropp@deschutes.org">erik.kropp@deschutes.org</a>	<ul style="list-style-type: none"> <li>• Central Oregon Intergovernmental Council (Deschutes Formula and All Discretionary Projects)</li> <li>• City of La Pine (Discretionary)</li> </ul>
Jefferson County	Jeff Rasmussen	<a href="mailto:jeff.rasmussen@co.jefferson.or.us">jeff.rasmussen@co.jefferson.or.us</a>	<ul style="list-style-type: none"> <li>• Central Oregon Intergovernmental Council (Formula Only)</li> </ul>
Lane Transit District	Aurora Jackson	<a href="mailto:aurora.jackson@ltd.org">aurora.jackson@ltd.org</a>	<ul style="list-style-type: none"> <li>• Lane Council of Governments (Formula and Discretionary)</li> <li>• City of College Grove</li> </ul>
Linn County	Mark Volmert	<a href="mailto:mvolmert@co.linn.or.us">mvolmert@co.linn.or.us</a>	<ul style="list-style-type: none"> <li>• City of Albany (Formula and Discretionary)</li> <li>• City of Lebanon</li> <li>• Oregon Cascades West Council of Government (Discretionary)</li> </ul>

Name of QE	STIF Plan Contact	Contact Email	Applicable PTSPs
Salem Area Mass Transit	Trisha Bunsen	trisha.bunsen@cherriots.org	<ul style="list-style-type: none"> <li>• City of Silverton</li> <li>• City of Woodburn (Formula and Discretionary)</li> </ul>
TriMet	Tom Mills	millst@trimet.org	<ul style="list-style-type: none"> <li>• Canby Area Transit</li> <li>• City of Portland</li> <li>• Clackamas County (Formula and Discretionary)</li> <li>• Columbia County Rider</li> <li>• Multnomah County</li> <li>• Sandy Transit</li> <li>• South Clackamas Transportation District</li> <li>• South Metro Area Regional Transit (Formula and Discretionary)</li> <li>• Washington County (Formula and Discretionary)</li> </ul>
Umatilla County	Robert Waldher	robert.waldher@umatillacounty.net	<ul style="list-style-type: none"> <li>• City of Hermiston</li> <li>• City of Milton-Freewater</li> <li>• City of Pendleton (Formula and Discretionary)</li> <li>• Kayak Public Transit</li> </ul>
Wasco County	Jessica Metta	Jessica@mcedd.org	<ul style="list-style-type: none"> <li>• Mid-Columbia Economic Development District</li> </ul>



**Please contact the following for any questions regarding this table:**

Lynda Viray, STIF Formula Fund Program Coordinator  
 Lynda.Viray@odot.state.or.us  
 (503) 986-3416

Patrick DePriest, STIF Discretionary Fund Program Coordinator  
 Patrick.DePriest@odot.state.or.us  
 (503) 986-3312