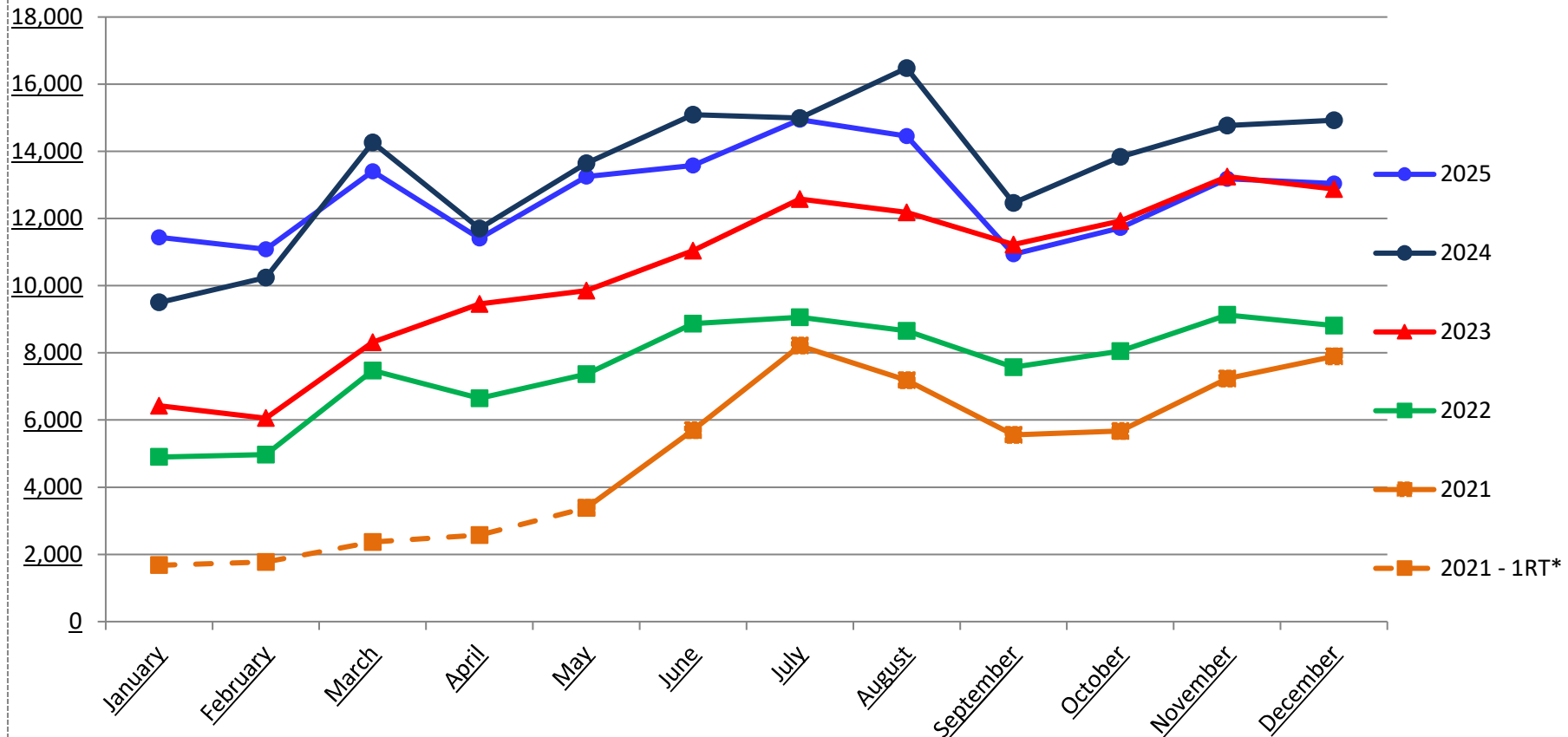


Amtrak Cascades Ridership in the Eugene – Portland Corridor Trains Operated Under Contract for the Oregon Department of Transportation



The COVID-19 pandemic and the resulting decreases in demand led to the decision to reduce service to one round trip per day between Seattle and Eugene. Service was resumed to two daily round trips on May 24, 2021. The dotted lines above depict the timeframe when the service was reduced to one roundtrip daily.

*RT = Roundtrip PDX-EUG

Amtrak Cascades Ridership in the Eugene-Portland Corridor

TRAINS OPERATED UNDER CONTRACT FOR THE OREGON DEPARTMENT OF TRANSPORTATION

TRAIN		JAN	FEB	MAR	APR	MAY	JUN	JUL	AUG	SEP	OCT	NOV	DEC	YEAR
504	2025	2,960	2,945	3,745	2,986	3,728	3,798	3,883	4,017	3,357	3,325	3,714	3,751	42,209
508		2,629	2,808	3,375	2,991	3,268	3,331	3,682	3,373	2,490	2,956	3,320	3,345	37,568
Northbound Trains		5,589	5,753	7,120	5,977	6,996	7,129	7,565	7,390	5,847	6,281	7,034	7,096	79,777
503		2,708	2,505	3,327	2,781	3,079	3,348	3,888	3,743	2,495	2,618	3,090	3,200	36,782
507		3,140	2,825	2,958	2,651	3,169	3,103	3,491	3,322	2,593	2,817	3,060	2,741	35,870
Southbound Trains		5,848	5,330	6,285	5,432	6,248	6,451	7,379	7,065	5,088	5,435	6,150	5,941	72,652
All		11,437	11,083	13,405	11,409	13,244	13,580	14,944	14,455	10,935	11,716	13,184	13,037	152,429
504	2024	2,219	2,850	3,965	3,227	3,795	4,366	4,237	5,140	3,695	4,427	4,155	4,232	46,308
508		2,287	2,415	3,499	2,785	3,331	3,390	3,371	3,440	2,792	2,750	3,663	3,546	37,269
Northbound Trains		4,506	5,265	7,464	6,012	7,126	7,756	7,608	8,580	6,487	7,177	7,818	7,778	83,577
505		2,602	2,175	3,313	2,715	2,982	1,027							14,814
507		2,397	2,803	3,482	2,975	3,536	3,641	3,680	4,158	3,006	3,645	3,453	3,247	40,023
503							2,664	3,702	3,741	2,971	3,009	3,499	3,899	23,485
Southbound Trains		4,999	4,978	6,795	5,690	6,518	7,332	7,382	7,899	5,977	6,654	6,952	7,146	78,322
All	9,505	10,243	14,259	11,702	13,644	15,088	14,990	16,479	12,464	13,831	14,770	14,924	161,899	
500	2023	1,469	1,526	2,253	1,844	2,146	2,323	2,653	2,670	2,554	2,546	2,768	786	25,538
504													2,462	2,462
508		1,288	1,348	1,897	2,346	2,571	2,788	3,152	2,957	2,759	3,209	3,526	3,358	31,199
Northbound Trains		2,757	2,874	4,150	4,190	4,717	5,111	5,805	5,627	5,313	5,755	6,294	6,606	59,199
503		2,018	1,720	2,253	2,527	2,514	3,034	3,346	3,263	2,838	2,924	3,453	822	30,712
505		1,647	1,465	1,915	2,739	2,620	2,900	3,431	3,293	3,069	3,249	3,504	3,406	33,238
507													2,044	2,044
Southbound Trains	3,665	3,185	4,168	5,266	5,134	5,934	6,777	6,556	5,907	6,173	6,957	6,272	65,994	
All	6,422	6,059	8,318	9,456	9,851	11,045	12,582	12,183	11,220	11,928	13,251	12,878	125,193	
TRAIN		JAN	FEB	MAR	APR	MAY	JUN	JUL	AUG	SEP	OCT	NOV	DEC	YEAR
500	2022	999	1,032	1,587	1,430	1,637	1,863	1,804	1,956	1,693	1,762	1,903	2,168	19,834
508		1,246	1,392	2,023	1,712	1,835	2,283	2,399	2,281	1,885	2,098	2,361	2,243	23,758
Northbound Trains		2,245	2,424	3,610	3,142	3,472	4,146	4,203	4,237	3,578	3,860	4,264	4,411	43,592
503		1,354	1,304	1,980	1,803	2,063	2,790	2,744	2,455	2,114	2,036	2,297	2,205	25,145
505		1,303	1,245	1,887	1,699	1,830	1,936	2,115	1,963	1,880	2,160	2,571	2,192	22,781
Southbound Trains		2,657	2,549	3,867	3,502	3,893	4,726	4,859	4,418	3,994	4,196	4,868	4,397	47,926
All		4,902	4,973	7,477	6,644	7,365	8,872	9,062	8,655	7,572	8,056	9,132	8,808	91,518