

2025 NORTHWEST OREGON CONSTRUCTION MAP



Use this
map so you
“Know Before
You Go”



**Oregon
Department
of Transportation**

SHARING THE ROAD WITH BICYCLISTS

SHARING THE ROAD WITH BICYCLISTS

In Oregon, bicycles are legally considered vehicles, and cyclists have the same rights and duties as drivers of motor vehicles.

Important things to know about sharing the road with cyclists:

- **Right to use a full lane:** Bicyclists have the right to use a full traffic lane, especially when there is no designated bike lane or shoulder, or when the road is narrow.
- **Passing distances:** Drivers must not overtake or pass a bicycle at a distance of less than three feet between any part of the motor vehicle and any part of the bicycle or its operator.
- **Safe Passage Law:** Drivers must give bicyclists extra room when passing, especially at speeds greater than 35 mph.
- **Turning:** When turning, drivers must check for cyclists in their blind spot and yield to cyclists in a bicycle lane or on a sidewalk.
- **Stop and Yield Law:** In Oregon, cyclists can treat stop signs and flashing red signals as yield signs. Cyclists are allowed to slow to a safe speed, check for cross traffic and if it is safe, proceed without stopping.



STAY ALERT.

- **Bicyclists can be anywhere at any time**, even in places you do not expect to see them.
- **Bicyclists can be very hard to see**, especially in bad weather or at night. Staying alert will help you notice them. If you can't see clearly, slow down.
- **Leave a safe distance** between your car and a bicyclist when passing.
- **Bicyclists are allowed** to “take the lane” if there is not room for you to safely pass.
- **Check the bike lane before turning.** Look and then look again. In city traffic, bicyclists can move as quickly as cars. If you've just passed a bicyclist, make sure there is plenty of space before turning across their path.
- **Be especially cautious around schools and in residential neighborhoods.** These are places where you are most likely to find children on bicycles.
- **Look before opening your door** so you don't cause a potential collision for other cars, bikes, or pedestrians.

TIPS FOR DRIVING SAFELY THROUGH WORK ZONES

FOLLOW THESE TIPS:

- **Pay complete attention to your driving**, especially in the transition zone before the work zone. An inattentive driver is the most common cause of work zone crashes.
- Orange is your clue! **Pay attention when you see orange signs, barrels, cones and barricades.**
- **Obey all speed signs.** Speed may be reduced in work zones for your safety and the safety of workers.
- **Double your following distance.** Don't tailgate.



- **Get in the correct lane** well in advance.
- Remember, **work zone traffic lanes are often narrow, without shoulders or emergency lanes.**
- When possible, **move over to give workers more room** between them and your vehicle.
- **Be aware of temporary construction accesses** on either side of the road.



- **Watch for construction vehicles and law enforcement** and don't follow them as they move in and out of the work zone.
- **Expect delays — plan for them** — leave early and drive safely through the work zone.
- **Avoid work zones.** When you can, use an alternate route.
- **Know before you go!** Visit www.TripCheck.com or call 5-1-1 to check routes, work zones and road and weather conditions before you head out.

TIPS FOR PEOPLE WALKING, BIKING AND ROLLING THROUGH WORK ZONES

Work zones always provide accommodations or accessible detour routes for people walking, biking or rolling through a construction zone.



THESE SIMPLE GUIDELINES CAN HELP MAKE THE TRIP SAFER AND LESS STRESSFUL:

1. Plan your trip.
2. Visit www.TripCheck.com or dial 5-1-1 to determine if construction is occurring along your route.
3. When possible, use an alternate route to avoid work zones.

WHEN BIKING, WALKING or ROLLING THROUGH A WORK ZONE:

- Be alert. Be visible. Be patient.
- Follow direction given by flaggers. Flaggers often provide specific instructions for bicyclists and pedestrians.
- Look for marked detour routes, signs and devices that may change your normal route.
- Follow signs for motor vehicles if you are a bicyclist sharing the road.
- Stay out of the work area! Don't walk or ride behind cones, barricades or barrier, unless directed by a flagger.
- Ride carefully over rough, uneven terrain. You may need to walk your bike across gravel or unpaved surfaces. Use caution when riding over pavement markers and reflectors.
- Watch for steel plates in the road. They may be slippery, especially if wet.
- Report unsafe conditions to a flagger or construction official. Contact AskODOT with any questions or concerns at 1-888-Ask-ODOT or visit www.oregon.gov/odot/ts.

IMPROVING SAFETY AND VISIBILITY AT INTERSECTIONS

OR 211 SAFETY CORRIDOR: MOLALLA AND COLTON

In 2021, ODOT, community members and law enforcement worked together to designate a section of OR 211 a Safety Corridor between Molalla and Colton as a safety corridor in response to high crash rates. ODOT safety improvements completed in 2024 aimed to reduce crashes with new signage, striping, lighting and rumble strips.



Safety corridor designations typically last for three-to-five years and implement education, engineering and enforcement to decrease fatal and serious injury crashes.

Education – Raising awareness in the community for safe driving habits, using signs, outreach and education.

Engineering – After a Road Safety Audit (RSA) to evaluate conditions, ODOT worked with the community to identify potential safety solutions including: new signs and striping, safety zone speed reduction, new lighting at two intersections and installing "raised strips on the road, alerting drivers through vibration or sound that their vehicles have left the travel lane.

Enforcement – We installed signs in October 2021 designating the limits of the safety corridor and announcing that traffic fines are now double. Law enforcement has prioritized the safety corridor to help reduce crashes.



PROJECT HIGHLIGHT

OR 217 Auxiliary Lanes

WE'RE IN THE FINAL STRETCH OF THIS IMPORTANT SAFETY PROJECT, WITH COMPLETION AT THE END OF THE YEAR.

This four-year, \$174 million project is marching toward an on-time completion at the

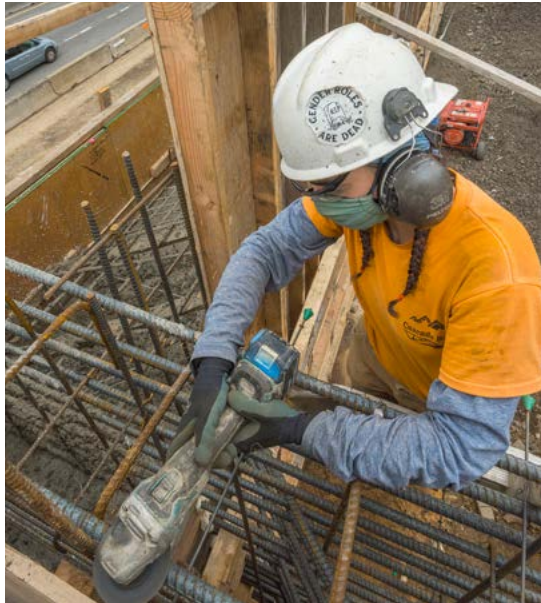
end of 2025. In the past year, crews finished constructing the new auxiliary lanes which still need final paving and striping before opening the auxiliary lanes for drivers. The paving work requires closing one direction of OR 217 at a time for several weekends over the summer.

The Hall Boulevard overpass in Beaverton now has sidewalks and bicycle lanes in both directions, thanks to our partnership with the City of Beaverton and Washington County. These changes provide a much-needed east/west connection for people bicycling, walking and rolling between Scholls Ferry Road and Cascade Avenue and allow all travelers more space to cross the overpass safely.

The Hall Boulevard overpass in Tigard remains closed while crews finish rebuilding the bridge. People walking, riding and rolling can use the temporary pedestrian bridge for continued access across OR 217.

Our team is very excited to finish up the project this year and help everyone on OR 217 get where they need to go more safely and reliably. Once complete, we expect up to 73,000 hours of travel time saved each year with these improvements. We appreciate everyone's patience as we work on this busy corridor.

To keep up with the project schedule as construction progresses, visit the project website: www.hwy217.org.



PROJECT HIGHLIGHT

I-205 Abernethy Bridge

STEADY PROGRESS CONTINUES ON A MASSIVE, SEISMIC PROJECT

Significant strides are being made on the I-205 Abernethy Bridge construction project as we work to deliver the first earthquake-ready interstate bridge over the Willamette River in the Portland Metro region. Our construction focus for 2025 is completing remaining foundation work, fabrication of structural steel girders, rebuilding and installing bridge supports and bearings. In addition, deck demolition and widening is under way to accommodate the upcoming bridge “slide” in 2026 where it will be widened by sliding both bridge decks on to new supporting structures, to complete ODOT's largest construction project in 45 years.

Construction progress moved forward steadily in 2024, marked by several key milestones that reflect the ongoing commitment to meeting project goals. Crews completed the massive support piers in the water that will support the seismic retrofit of the bridge.

Two new retaining walls have been constructed at the new OR 43 roundabout – which opened in 2023 – and another at Clackamette Drive, while a soundwall was installed near the Main Street Bridge. Two more retaining walls will be built along with additional upgrades for bike and pedestrian traffic.

For more information visit the project website: <https://www.i205corridor.org/>



KNOW BEFORE YOU GO

We're
committed to
developing
a modern,
reliable
transportation
system that
serves all
Oregonians.



This map shows major road construction projects planned along Northwest Oregon highways during the summer 2025 construction season and helps you avoid delays.

Use these resources so you
"Know Before You Go."
We will help you get there.

Follow us on X:

[@OregonDOT](#)

and Instagram:

[@OregonDot](#)

Like us on Facebook:

www.fb.com/OregonDOT



**In-state Travel Information
updated 24/7:**

**Call 5-1-1
or 1-800-977-6368**

www.TripCheck.com

**ODOT's Website
www.oregon.gov/ODOT**

INTERSTATE HIGHWAYS

INTERSTATE 5 (Pacific Highway)

1I-5 Rose Quarter Improvements
I-5 in Portland between I-84 and I-405 – Improves safety and congestion where three major interstates converge, reconnects the Albina neighborhood by constructing a highway cover over a portion of I-5. Phase 1 A includes stormwater improvements and bridge work. Expect nighttime lane closures and possible shoulder closures. Estimated completion for Phase 1 A: 2027. <https://www.i5rosequarter.org>

2I-5 Aurora-Donald Interchange Phase 2
I-5 and Ehlen Road interchange area, Exit 278 – Addresses congestion and makes safety improvements by building an improved interchange and widening I-5 at Exit 278. Expect nighttime lane closures and delays, shifted traffic. Speed limit reduced to 55 mph in the work zone – use caution. Estimated completion: 2027. <https://direc.to/jkQW>

3I-5 RealTime Signs
South Portland – Improves the RealTime system by installing Variable Advisory Speed (VAS) signs on I-5 in south Portland to improve safety and traffic flow. Expect nighttime lane closures, weekend lane closures and several overnight full closures of I-5. Estimated completion: summer 2025. [Bit.ly/I-5VariableSigns](https://direc.to/jkQW)

INTERSTATE 84 (Columbia River Highway)

4McCord Creek Bridge Replacement
West of Cascade Locks – Replaces an aging bridge carrying I-84 east over McCord Creek, eliminating a dip in the road and increasing safety, earthquake resilience and the lifespan of the highway. Expect periodic lane closures from spring to fall 2025. Estimated completion: fall 2026 [i84GorgeConstruction.org](https://direc.to/jkQW)

INTERSTATE 205 (War Veterans Memorial Highway)

5I-205 Abernethy Bridge
West A Street in West Linn to Main Street in Oregon City – Widens and seismically upgrades the bridge, makes additional improvements to on- and off-ramps adjacent to the bridge, improves multi-use paths and built a new roundabout (opened August 2023). Expect periodic overnight single lane and/or on- and off-ramp closures with temporary detours within the construction zone through 2026. Estimated completion: 2026. [i205corridor.org](https://tinyurl.com/i205corridor.org)

6I-205: Bus on Shoulder
Clackamas County – Relocates existing rumble strips, updates signs and striping between I-5 and Clackamas to allow buses to use highway shoulder when traffic slows below 35 mph during peak hours. Expect periodic lane closures and shoulder closures. Estimated completion: 2025. <https://tinyurl.com/56se8b2n>

U.S. HIGHWAYS

U.S. 26 (Mt. Hood Highway)

7U.S. 26 at 92nd Avenue ADA Ramps
SE Powell Boulevard – Upgrades existing sidewalk curb ramps and pedestrian push button signals at the intersection to meet current Americans with Disabilities Act (ADA) accessibility standards. Expect daytime single-lane closures, nighttime multi-lane closures, temporary sidewalk and crosswalk closures. Estimated completion: 2025. tinyurl.com/SEPowellandSE92ndAve

8U.S. 26 at 36th Avenue Pedestrian Safety Improvements
SE Powell Boulevard – Improves safety for people walking, biking or rolling by upgrading the currently unsignalized crosswalk on U.S. 26 (SE Powell Boulevard) and SE 36th Avenue with a new RRFB. Expect daytime, nighttime single lane closures, temporary side street closures, sidewalk and crosswalk closures with flaggers directing traffic as needed. Estimated completion: 2025. tinyurl.com/SEPowellandSE36thAve

9U.S. 26 Outer Powell Transportation Safety Improvements (Phase 2)
Between I-205 and just east of SE 174th Avenue – Constructs improvements to busy outer SE Powell Boulevard that will reduce the frequency and severity of crashes and help vehicles, pedestrians, transit, transit users and bicyclists share the road with fewer conflicts. Expect lane closures, traffic shifts, shoulder closures, detours and up to 20-minute traffic stops with flagger control, weekdays during the day and at night. Estimated completion: 2030. [OuterPowellSafety.org](https://tinyurl.com/OuterPowellSafety.org)

U.S. 30 (Lower Columbia River Highway)

10U.S. 30 Culvert Repair
NW Portland – Strengthens and repairs two culverts under U.S. 30 between NW Portland and Scappoose. Expect nighttime and limited daytime single lane and shoulder closures. Estimated completion: 2025. [Bit.ly/us30culverts](https://bit.ly/us30culverts)

U.S. 30 (Historic Columbia River Highway)

11Multnomah Falls Viaducts Repair
Old Highway at Multnomah Falls – Repairs and restores the historic elevated roads east and west of the falls. A section of the Historic Highway just east of Multnomah Falls is closed Oct. 1, 2025, to Memorial Day 2026. Periodic nighttime single lane closures summer 2025. No impacts to I-84. Estimated completion: 2026. i84GorgeConstruction.org

U.S. 30 (Historic Columbia River Highway)

12Old Highway at East Larch Mountain Road
Old Highway at East Larch Mountain Road – Repairs a section of the historic highway near Larch Mountain Road to make the road safer where ancient landslides exist. Expect U.S. 30 to be closed in both directions between Larch Mountain Road and Vista House for several months starting this summer. Speed temporarily reduced to 25 miles per hour until repairs are completed. Estimated completion: 2025. i84GorgeConstruction.org


Published in May 2025.

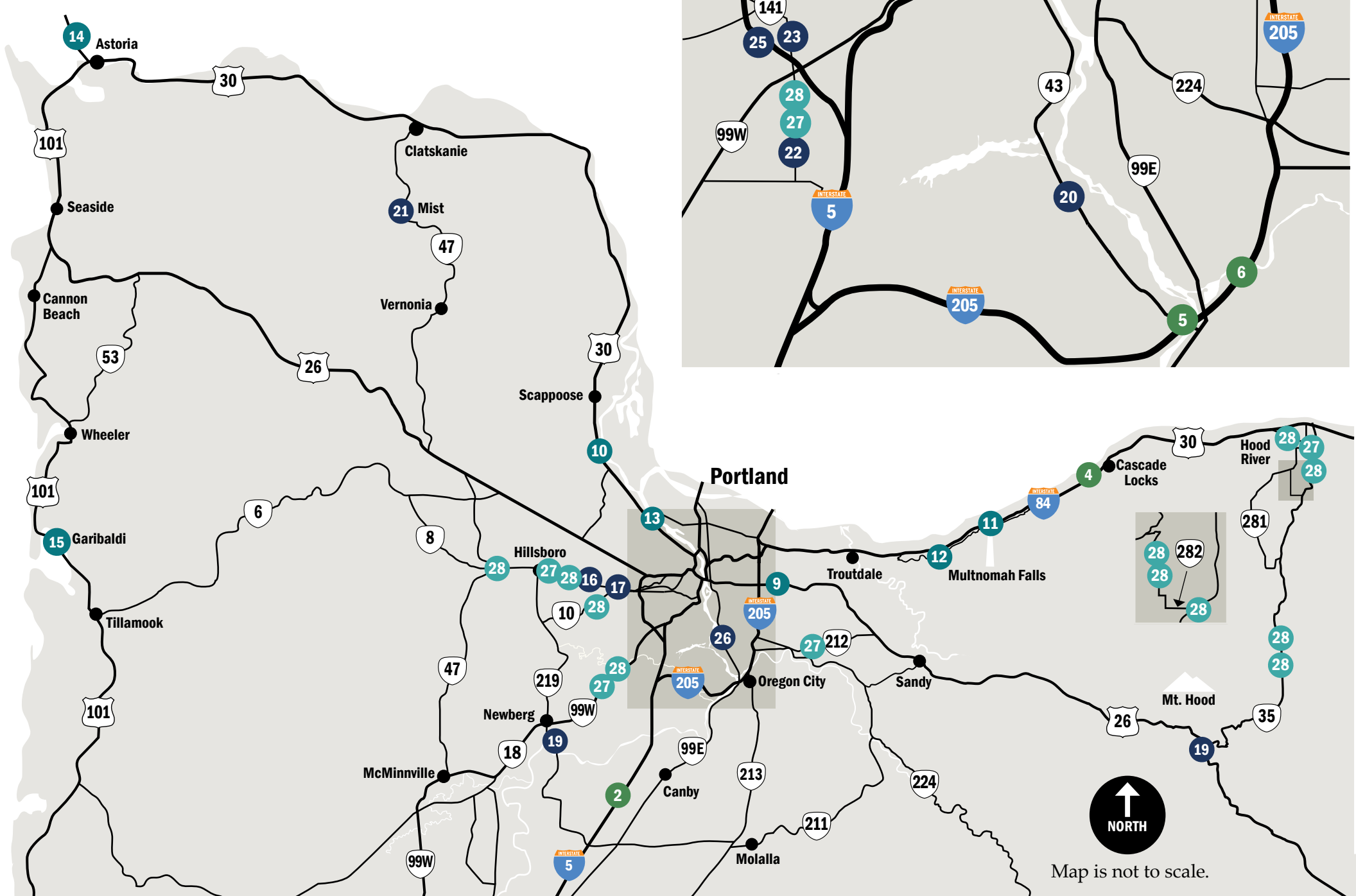
2025

CONSTRUCTION PROJECTS

Northwest Oregon

For project information, visit:
ODOTconstructionPDX.com





U.S. 30 BYPASS (Lombard Street)

13St. Johns Bridge Repairs
North Portland, Cathedral Park – Repairs the concrete pier columns and arches under the St. Johns Bridge to protect the bridge’s internal frame and reinforcements from corrosion. Expect pedestrian impacts and visual impacts at Cathedral Park. Estimated completion: 2027. bit.ly/stjohnsbridgerepair

U.S. 101 (Oregon Coast Highway)

14U.S. 101 Astoria-Megler Bridge Repairs
Bridge between Astoria and Washington – Maintenance repairs to the Astoria-Megler Bridge. Expect a single lane closed on the bridge during the day, Monday-Thursday and until noon on Fridays. Estimated completion: 2025. <https://direc.to/jkQW>

15U.S. 101: Urban Upgrades
Garibaldi – Rebuilds the road, sidewalks and curb ramps on U.S. 101 through Garibaldi to help make the area safer for all. Expect shoulder and lane closures, flaggers helping direct traffic as needed, temporary sidewalk closures. Estimated completion: 2025. <https://direc.to/jkQW>

STATE HIGHWAYS

OR 8 (Tualatin Valley Highway)

16OR 8 Fiber Optic Cable Project
198th Avenue to OR 217 (Beaverton and Aloha) – Installs new overhead and underground fiber optic cable where gaps exist along TV Highway (OR 8) in this section. Expect short-term single lane, shoulder and bike lane closures during the day and night, temporary sidewalk and crosswalk closures. Estimated completion: 2026. OR8construction.org

17TV Highway Pedestrian Safety Project
182nd Avenue to 153rd Ave (Aloha) – Installs a new enhanced crosswalk at 174th Avenue and bicycle striping upgrades on TV Highway (OR 8) in this section. Expect daytime and nighttime lane closures on TV Highway, shoulder closures and short-term sidewalk closures. Estimated completion: 2025. OR8construction.org

18Canyon Road Pedestrian Safety Project
Hall Boulevard to Cedar Hills Boulevard (Beaverton) – Improves pedestrian safety on SW Canyon Road (OR 8) from SW Hall Boulevard to SW Cedar Hills Boulevard in Central Beaverton, including a new enhanced crosswalk at Rose Biggi Ave. Expect short-term lane and shoulder closures on Canyon Road and on side streets and temporary sidewalk closures. Estimated completion: 2026 OR8construction.org

During construction, pedestrians will have access through and around work zones. Pedestrian detours will be accessible to people with disabilities.

For ADA (Americans with Disabilities Act) or Civil Rights Title VI accommodations, translation/interpretation services, or more information call 503-731-4128, TTY 800-735-2900 or Oregon Relay Service 7-1-1.

OR 18 and OR 219 (Newberg-Dundee Bypass Phase 2A)

19Newberg-Dundee Bypass Phase 2A
Newberg – Addressing congestion and making safety improvements by building the new OR 219 and OR 18 interchange. Expect shoulder and lane closures, flaggers helping direct traffic as needed, signed detours, pedestrian detours, and delays. Plan for one weekend full closure of the ramp to OR 18. Estimated completion: 2027. <https://direc.to/jkQW>

OR 43 (Willamette Drive)

20OR 43 at Marylhurst Improvements
West Linn – Improves safety and mobility for all travelers by building a protected intersection on OR 43 (Willamette Drive) at the Marylhurst Drive intersection to separate cars from pedestrians and people biking. Expect lane closures day and night with nighttime closures of Marylhurst. Estimated completion: 2026. bit.ly/ODOT-OR43-Project

OR 47 (Oregon State Route 47)

21OR 47: Messing Creek Culvert Replacement
Mist – Constructs a new culvert for Messing Creek in Mist to improve road drainage and fish passage. Expect a temporary full road closure with a detour using Apiary Road. Estimated completion: 2025. <https://direc.to/jkQW>

OR 141 (SW Hall Boulevard)

22Hall Boulevard Pedestrian Improvements
SW Locust Street to SW Durham Road (Tigard) – Adds new pedestrian and bicycle safety improvements on Hall Boulevard in Tigard including an enhanced crosswalk at SW Ashford Street, lighting, speed feedback signs, green bicycle striping, paving and traffic signal modifications. Expect lane and shoulder closures on Hall Boulevard and side streets. Estimated completion: 2025. tinyurl.com/Hallimprovements

23SW Spruce – SW Hemlock Pedestrian Safety Improvements
SW Spruce to SW Hemlock (Tigard) – Installs two new Rectangular Rapid Flashing Beacons, at SW Spruce Street and SW Hemlock Street. Expect lane and shoulder closures on Hall Boulevard and side streets. Estimated completion: 2025. <https://tinyurl.com/SWHallBlvdRRFBs>

OR 213 (Cascade Highway South)

24OR 213 82nd Avenue Paving and Safety Improvements
SE Foster Road to SE Thompson Road – Repaves SE 82nd Avenue and installs pedestrian safety improvements including four new Rectangular Rapid Flashing Beacons, upgrades existing sidewalk curb ramps and new sidewalks in two locations. Expect daytime and nighttime lane closures, periodic side street closures. Estimated completion: 2025. tinyurl.com/82ndAveFosterToThompson

OR 217 (Beaverton-Tigard Highway)

25OR 217 Auxiliary Lanes Project
Beaverton and Tigard – Adds auxiliary lanes to OR 217 between Beaverton-Hillsdale Highway and OR 99W and enhances the nearby bicycle and pedestrian network to improve safety and reduce bottlenecks. Expect multiple lane closures on OR 217, adjacent local road lane closures and ramp closures. The Hall Boulevard overpass in Tigard is closed through August 2025 with a temporary bike/ pedestrian bridge over 217 in place to keep communities connected during the closure. Estimated completion: 2025. www.hwy217.org

OR 224 (Clackamas Highway)

26OR 224 SE 17th to Rusk Road Improvement
Milwaukie – Paves and makes safety improvements for pedestrians and people biking at Monroe Street Greenway. Expect nighttime directional closures, ramp closures and day/night lane closures. Estimated completion: 2026. tinyurl.com/OR224-17toRusk

VARIOUS REGION 1 HIGHWAYS OR LOCAL ROADS

27ADA Ramps Improvement Project
Throughout the Portland Metro area, Hood River County – Installs upgraded sidewalk curb ramps that meet accessibility standards in over 600 locations throughout the Portland area and downtown Hood River, making travel easier for those who use these sidewalks. Expect short-term lane and sidewalk closures with pedestrian detours. Estimated completion: 2025. r1ADA.org

28All Roads Transportation Safety (ARTS) Program – Portland Metro, Hood River Areas
Multnomah, Washington, and Hood River Counties – Installs new safety features at over 300 intersections of ODOT highways and city or county roads all around the Portland metro and Hood River areas. Improvements include tree trimming, advance warning signs, traffic signal head upgrades, stop sign improvements and intersection lighting. Expect daytime and nighttime single lane closures. Estimated completion: 2027. bit.ly/ARTSProgram

Podemos proveer la información en esta publicación en español. Para recibir la información en español, por favor llámé al 503-731-4128.

Если вы хотите, чтобы информация об этом проекте была переведена на русский язык, пожалуйста, звоните по телефону 503-731-4128.

如果您想瞭解這個項目翻譯成 繁體中文 的相關資訊，請致電 503-731-4128.

이 프로젝트에 관한 한국어로 된 자료 신청방법 전화: 503-731-4128.

Nếu quý vị muốn thông tin về dự án này được dịch sang tiếng Việt, xin gọi 503-731-4128