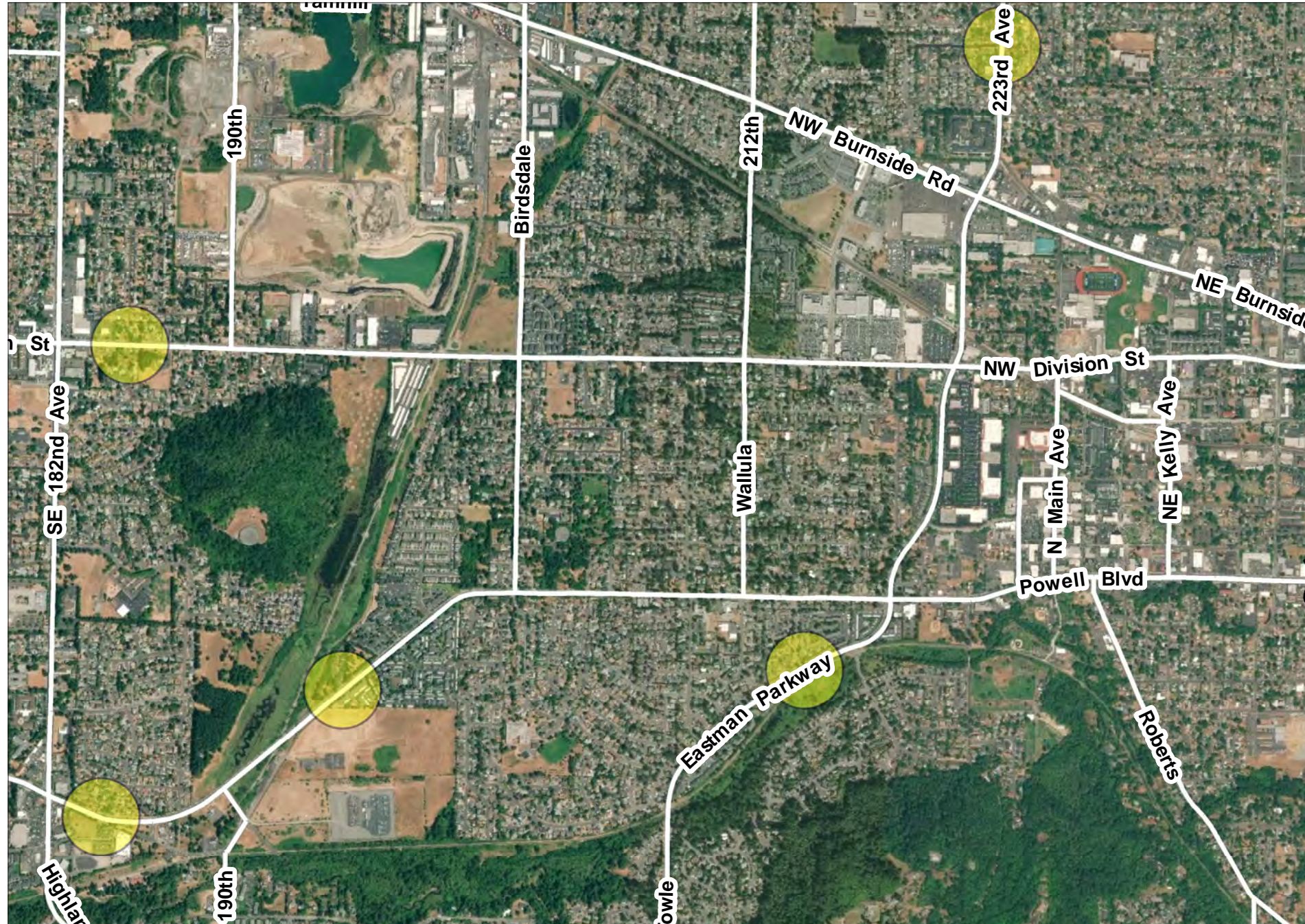


Lighting and Rectangular Rapid Flash Beacons (Gresham)

ODOT - Multnomah County

21628



Lighting and Rectangular Rapid Flash Beacons (Gresham)

ODOT - Multnomah County

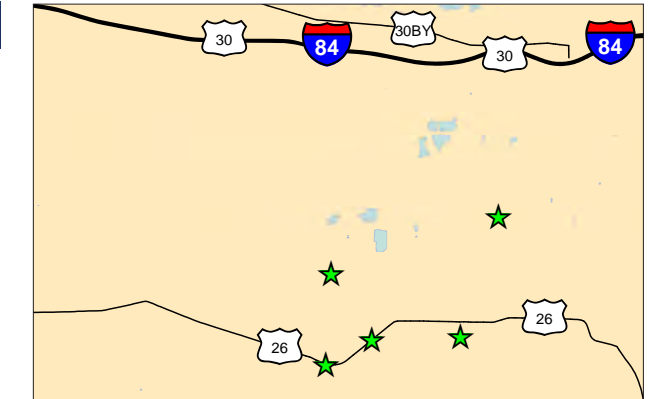
21628

Project Description

Installs lighting and Rectangular Rapid Flash Beacons (RRFBs) with advanced warning signs to increase visibility and improve safety for pedestrians in Gresham.

Anticipated Benefits

- Increased safety and visibility of pedestrians crossing the road by installation of Rectangular Rapid Flash Beacons, crosswalk markings, advanced warning signs and pedestrian islands.



Project locations in Gresham.

Purpose And Need

Five pedestrian crossing locations in this area are identified as difficult for pedestrians by the following criteria:

- Long crossing distances
- Lack of visibility
- Crash history
- Popular destinations

RRFBs will increase safety for pedestrians.

Proposed Solutions

Install Rectangular Rapid Flashing Beacons at the following locations:

- SE 223rd Avenue at NW 25th Street
- W Powell Boulevard at SW Duniway Avenue
- W Powell Boulevard at SW Duniway Avenue
- SW Eastman Parkway at SW Florence Avenue
- SE Division Street at SE 185th Avenue

Cost

All Roads Transportation Safety	\$578,987
City of Gresham	\$48,845
Estimated Total Cost	\$627,832



Existing travel conditions on SE 223rd Avenue at the intersection of NW 25th Street in Gresham.

