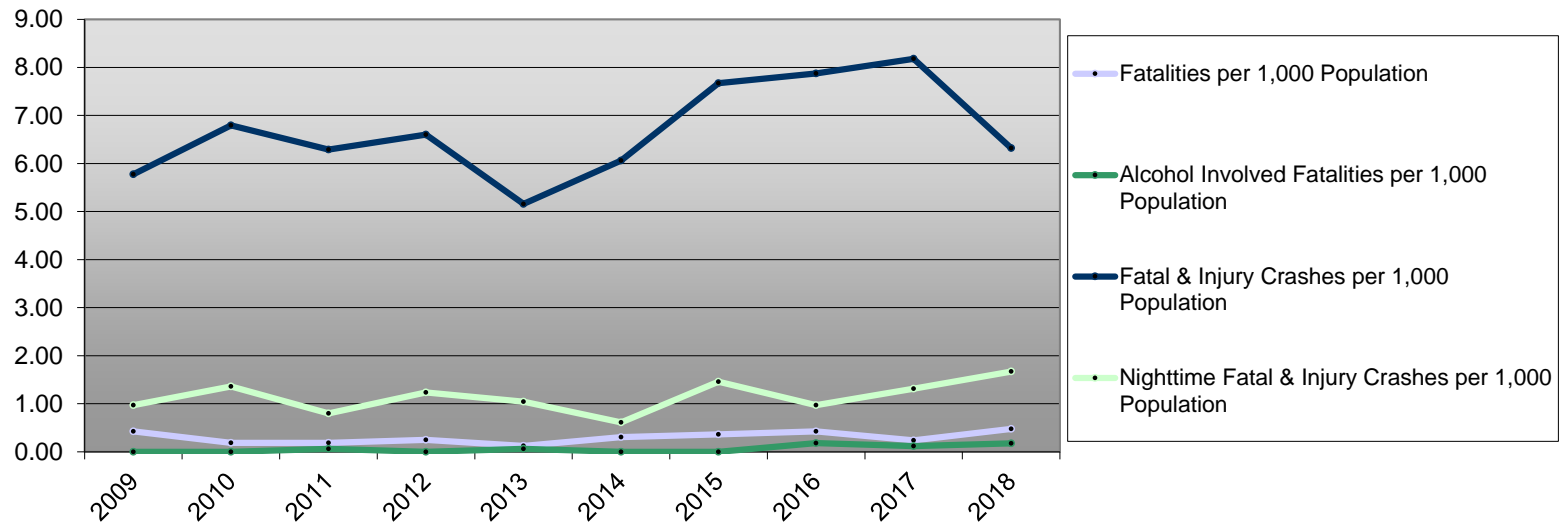


Baker County 10-Year Traffic Crash Data (2009-2018)

Year	Population	Fatalities	Alcohol Involved Fatalities	Fatal & Injury Crashes	Night time Fatal & Injury Crashes	Fatalities per 1,000 Population	Alcohol Involved Fatalities per 1,000 Population	Fatal & Injury Crashes per 1,000 Population	Nighttime Fatal & Injury Crashes per 1,000 Population
2009	16,450	7	0	95	16	0.43	0.00	5.78	0.97
2010	16,185	3	0	110	22	0.19	0.00	6.80	1.36
2011	16,215	3	1	102	13	0.19	0.06	6.29	0.80
2012	16,210	4	0	107	20	0.25	0.00	6.60	1.23
2013	16,280	2	1	84	17	0.12	0.06	5.16	1.04
2014	16,325	5	0	99	10	0.31	0.00	6.06	0.61
2015	16,425	6	0	126	24	0.37	0.00	7.67	1.46
2016	16,510	7	3	130	16	0.42	0.18	7.87	0.97
2017	16,750	4	2	137	22	0.24	0.12	8.18	1.31
2018	16,765	8	3	106	28	0.48	0.18	6.32	1.67

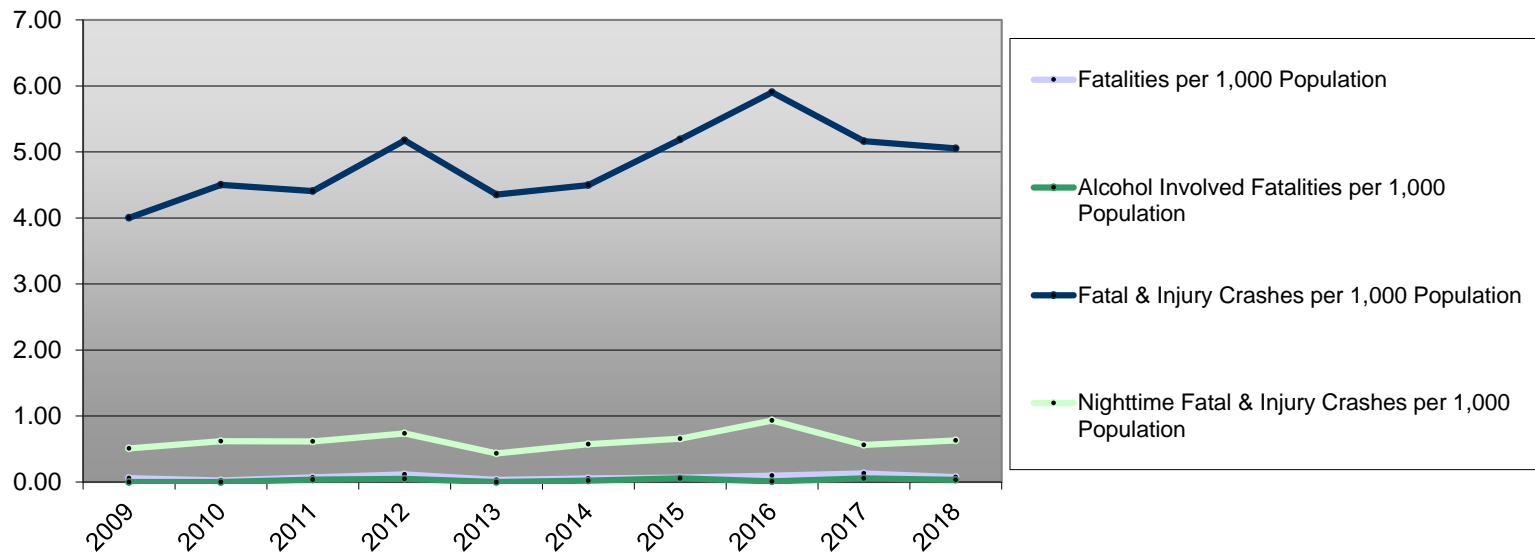
Baker County Fatal & Injury Crashes



Benton County 10-Year Traffic Crash Data (2009-2018)

Year	Population	Fatalities	Alcohol Involved Fatalities	Fatal & Injury Crashes	Night time Fatal & Injury Crashes	Fatalities per 1,000 Population	Alcohol Involved Fatalities per 1,000 Population	Fatal & Injury Crashes per 1,000 Population	Nighttime Fatal & Injury Crashes per 1,000 Population
2009	86,725	5	0	347	44	0.06	0.00	4.00	0.51
2010	85,735	2	0	386	53	0.02	0.00	4.50	0.62
2011	85,995	6	3	379	53	0.07	0.03	4.41	0.62
2012	86,785	10	4	449	64	0.12	0.05	5.17	0.74
2013	87,725	3	0	382	38	0.03	0.00	4.35	0.43
2014	88,740	5	2	399	51	0.06	0.02	4.50	0.57
2015	90,005	6	5	467	59	0.07	0.06	5.19	0.66
2016	91,320	9	1	539	85	0.10	0.01	5.90	0.93
2017	92,575	12	5	478	52	0.13	0.05	5.16	0.56
2018	93,590	7	3	473	59	0.07	0.03	5.05	0.63

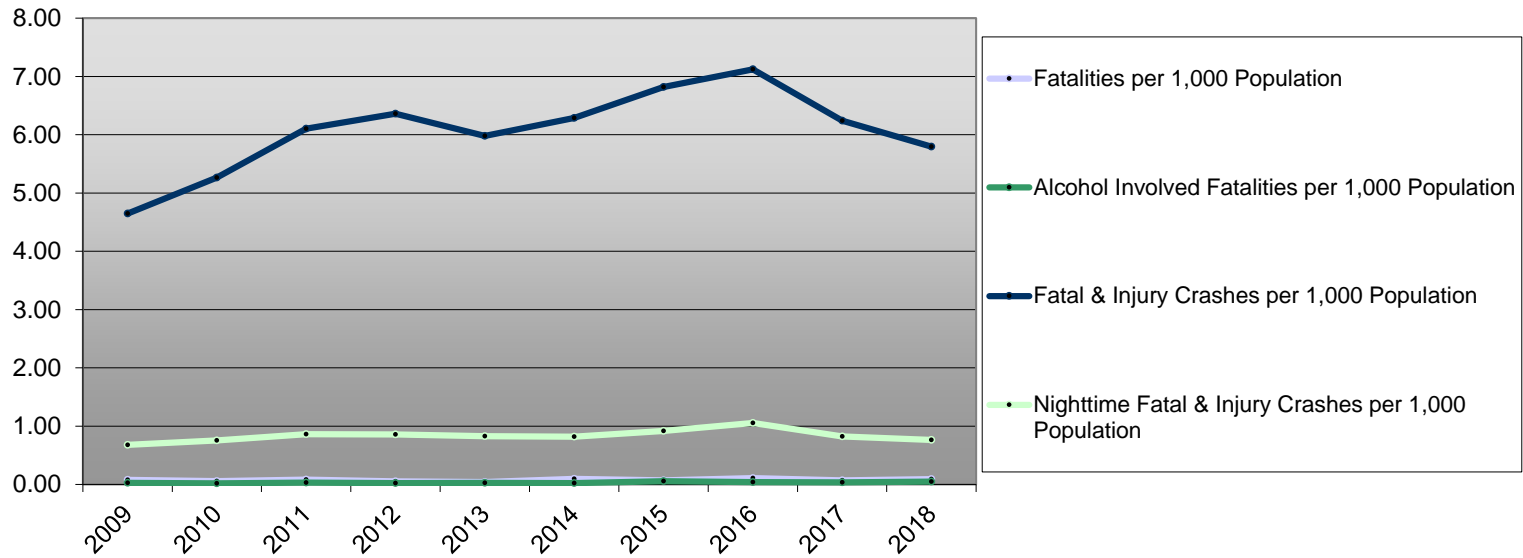
Benton County Fatal & Injury Crashes



Clackamas County 10-Year Traffic Crash Data (2009-2018)

Year	Population	Fatalities	Alcohol Involved Fatalities	Fatal & Injury Crashes	Night time Fatal & Injury Crashes	Fatalities per 1,000 Population	Alcohol Involved Fatalities per 1,000 Population	Fatal & Injury Crashes per 1,000 Population	Nighttime Fatal & Injury Crashes per 1,000 Population
2009	379,845	29	11	1,765	258	0.08	0.03	4.65	0.68
2010	376,780	21	7	1,984	284	0.06	0.02	5.27	0.75
2011	378,480	32	12	2,310	326	0.08	0.03	6.10	0.86
2012	381,680	20	9	2,428	328	0.05	0.02	6.36	0.86
2013	386,080	16	10	2,308	319	0.04	0.03	5.98	0.83
2014	391,525	38	9	2,461	320	0.10	0.02	6.29	0.82
2015	397,385	27	22	2,709	365	0.07	0.06	6.82	0.92
2016	404,980	44	16	2,884	427	0.11	0.04	7.12	1.05
2017	413,000	29	15	2,578	340	0.07	0.04	6.24	0.82
2018	419,425	39	21	2,430	320	0.09	0.05	5.79	0.76

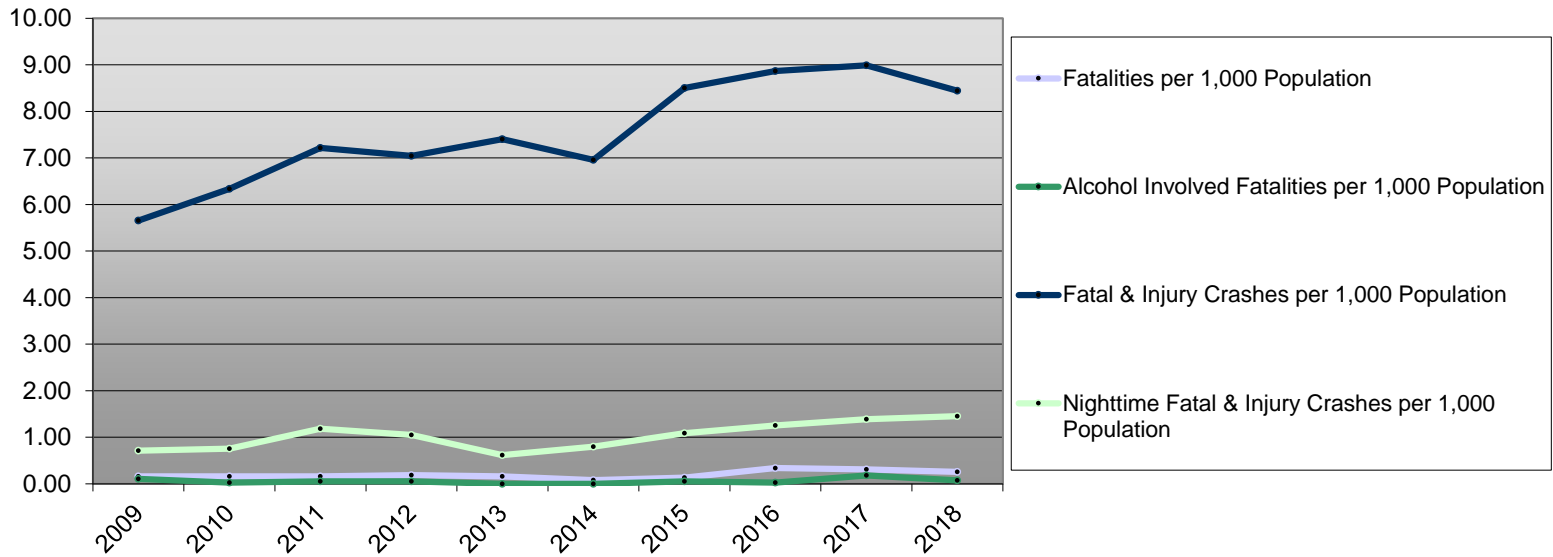
Clackamas County Fatal & Injury Crashes



Clatsop County 10-Year Traffic Crash Data (2009-2018)

Year	Population	Fatalities	Alcohol Involved Fatalities	Fatal & Injury Crashes	Night time Fatal & Injury Crashes	Fatalities per 1,000 Population	Alcohol Involved Fatalities per 1,000 Population	Fatal & Injury Crashes per 1,000 Population	Nighttime Fatal & Injury Crashes per 1,000 Population
2009	37,840	6	4	214	27	0.16	0.11	5.66	0.71
2010	37,070	6	1	235	28	0.16	0.03	6.34	0.76
2011	37,145	6	2	268	44	0.16	0.05	7.21	1.18
2012	37,190	7	2	262	39	0.19	0.05	7.04	1.05
2013	37,270	6	0	276	23	0.16	0.00	7.41	0.62
2014	37,495	3	0	261	30	0.08	0.00	6.96	0.80
2015	37,750	5	2	321	41	0.13	0.05	8.50	1.09
2016	38,225	13	1	339	48	0.34	0.03	8.87	1.26
2017	38,820	12	7	349	54	0.31	0.18	8.99	1.39
2018	39,200	10	3	331	57	0.26	0.08	8.44	1.45

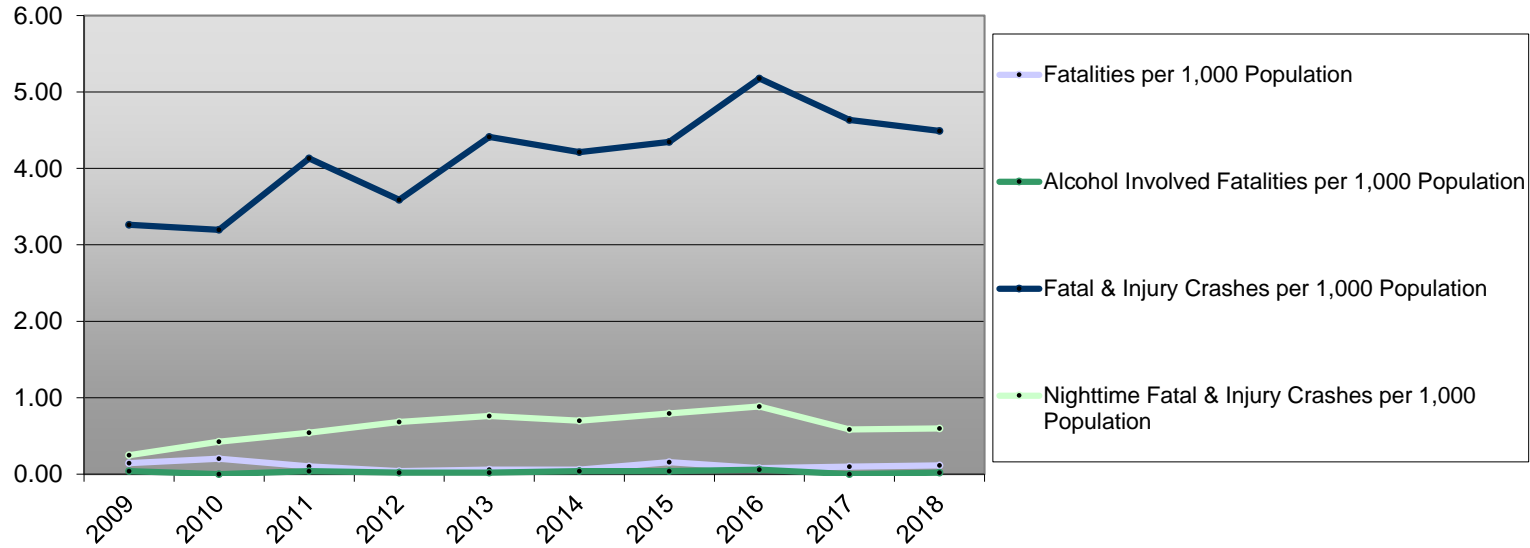
Clatsop County Fatal & Injury Crashes



Columbia County 10-Year Traffic Crash Data (2009-2018)

Year	Population	Fatalities	Alcohol Involved Fatalities	Fatal & Injury Crashes	Night time Fatal & Injury Crashes	Fatalities per 1,000 Population	Alcohol Involved Fatalities per 1,000 Population	Fatal & Injury Crashes per 1,000 Population	Nighttime Fatal & Injury Crashes per 1,000 Population
2009	48,410	7	2	158	12	0.14	0.04	3.26	0.25
2010	49,430	10	0	158	21	0.20	0.00	3.20	0.42
2011	49,625	5	2	205	27	0.10	0.04	4.13	0.54
2012	49,860	2	1	179	34	0.04	0.02	3.59	0.68
2013	49,850	3	1	220	38	0.06	0.02	4.41	0.76
2014	50,075	3	2	211	35	0.06	0.04	4.21	0.70
2015	50,390	8	2	219	40	0.16	0.04	4.35	0.79
2016	50,795	4	3	263	45	0.08	0.06	5.18	0.89
2017	51,345	5	0	238	30	0.10	0.00	4.64	0.58
2018	51,900	6	1	233	31	0.12	0.02	4.49	0.60

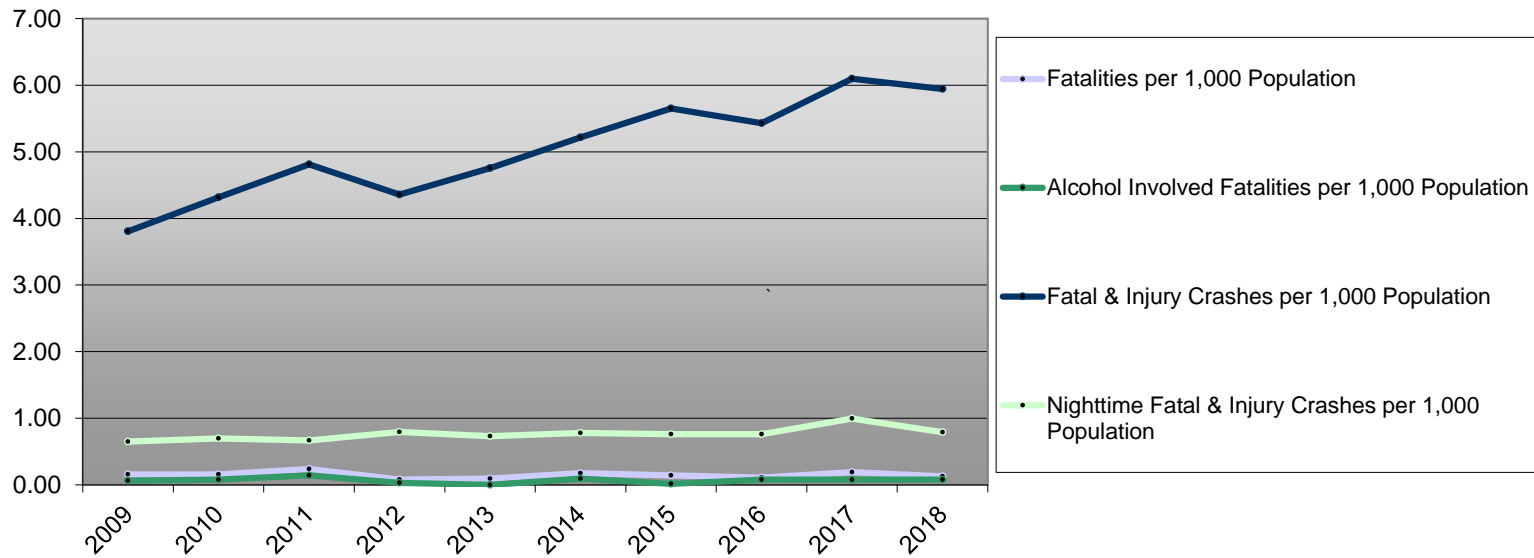
Columbia County Fatal & Injury Crashes



Coos County 10-Year Traffic Crash Data (2009-2018)

Year	Population	Fatalities	Alcohol Involved Fatalities	Fatal & Injury Crashes	Night time Fatal & Injury Crashes	Fatalities per 1,000 Population	Alcohol Involved Fatalities per 1,000 Population	Fatal & Injury Crashes per 1,000 Population	Nighttime Fatal & Injury Crashes per 1,000 Population
2009	63,065	10	4	240	41	0.16	0.06	3.81	0.65
2010	63,035	10	5	272	44	0.16	0.08	4.32	0.70
2011	62,960	15	9	303	42	0.24	0.14	4.81	0.67
2012	62,890	5	2	274	50	0.08	0.03	4.36	0.80
2013	62,860	6	0	299	46	0.10	0.00	4.76	0.73
2014	62,900	11	6	328	49	0.17	0.10	5.21	0.78
2015	62,990	9	1	356	48	0.14	0.02	5.65	0.76
2016	63,190	7	5	343	48	0.11	0.08	5.43	0.76
2017	63,310	12	5	386	63	0.19	0.08	6.10	1.00
2018	63,275	8	5	376	50	0.13	0.08	5.94	0.79

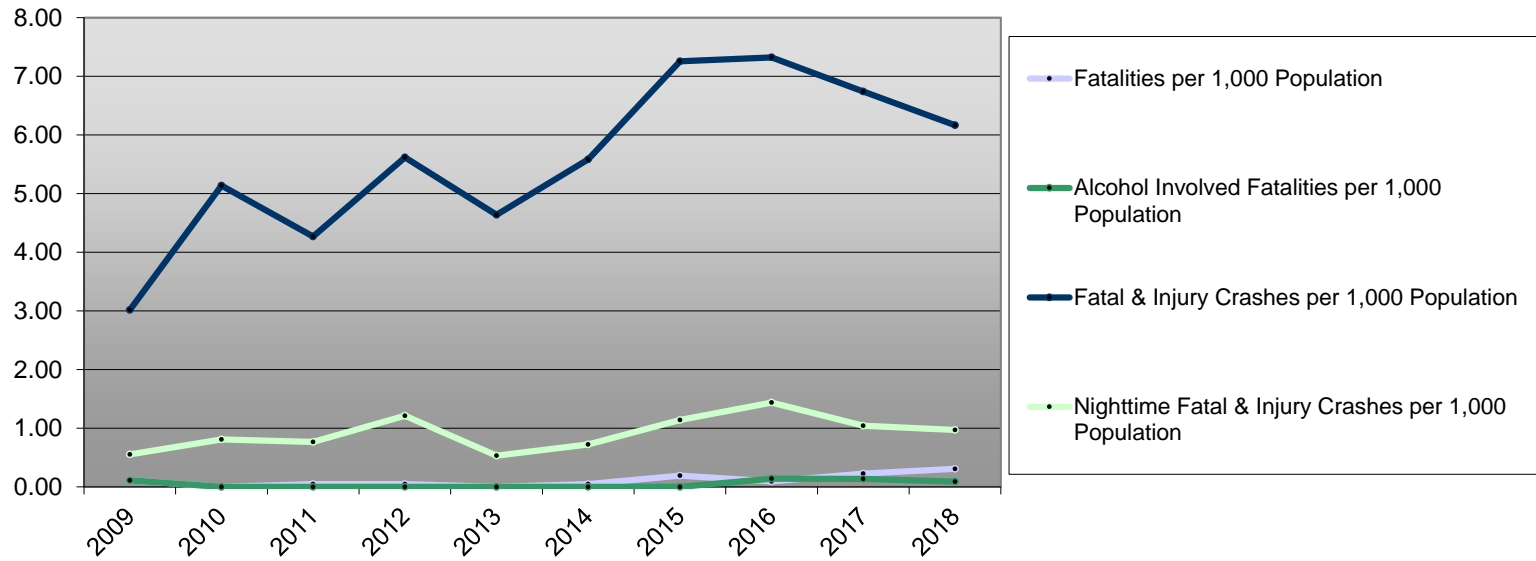
Coos County Fatal & Injury Crashes



Crook County 10-Year Traffic Crash Data (2009-2018)

Year	Population	Fatalities	Alcohol Involved Fatalities	Fatal & Injury Crashes	Night time Fatal & Injury Crashes	Fatalities per 1,000 Population	Alcohol Involved Fatalities per 1,000 Population	Fatal & Injury Crashes per 1,000 Population	Nighttime Fatal & Injury Crashes per 1,000 Population
2009	27,185	3	3	82	15	0.11	0.11	3.02	0.55
2010	21,020	0	0	108	17	0.00	0.00	5.14	0.81
2011	20,855	1	0	89	16	0.05	0.00	4.27	0.77
2012	20,650	1	0	116	25	0.05	0.00	5.62	1.21
2013	20,690	0	0	96	11	0.00	0.00	4.64	0.53
2014	20,780	1	0	116	15	0.05	0.00	5.58	0.72
2015	21,085	4	0	153	24	0.19	0.00	7.26	1.14
2016	21,580	2	3	158	31	0.09	0.14	7.32	1.44
2017	22,105	5	3	149	23	0.23	0.14	6.74	1.04
2018	22,710	7	2	140	22	0.31	0.09	6.16	0.97

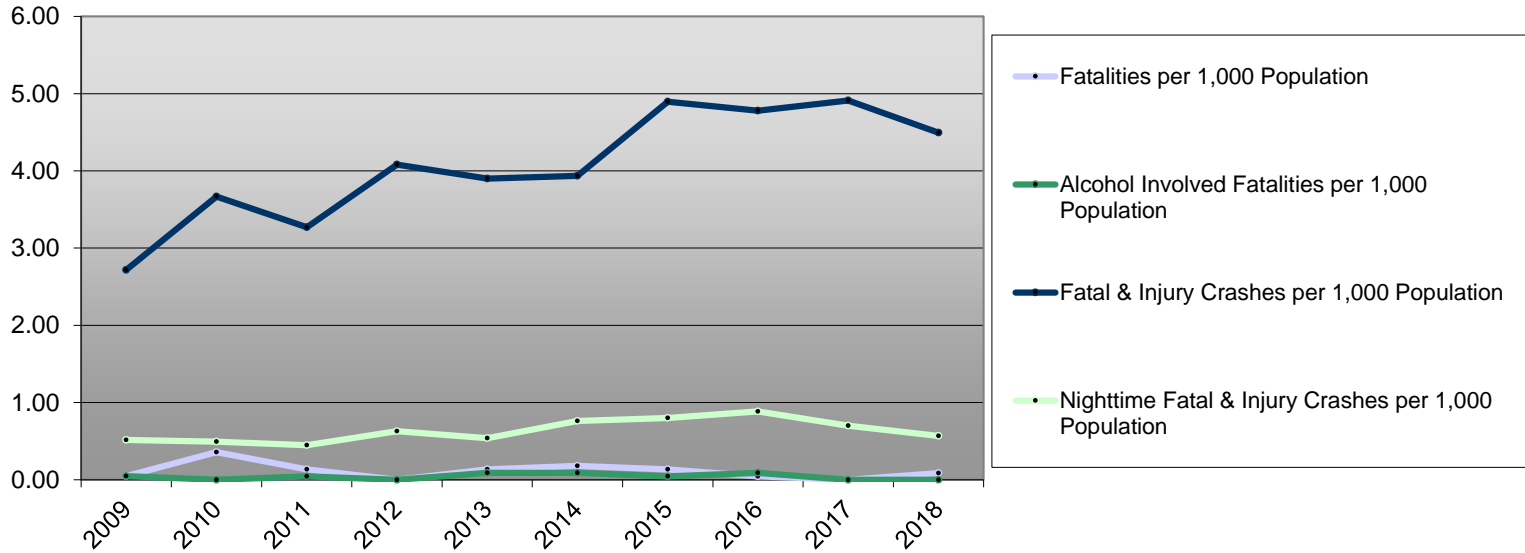
Crook County Fatal & Injury Crashes



Curry County 10-Year Traffic Crash Data (2009-2018)

Year	Population	Fatalities	Alcohol Involved Fatalities	Fatal & Injury Crashes	Night time Fatal & Injury Crashes	Fatalities per 1,000 Population	Alcohol Involved Fatalities per 1,000 Population	Fatal & Injury Crashes per 1,000 Population	Nighttime Fatal & Injury Crashes per 1,000 Population
2009	21,340	1	1	58	11	0.05	0.05	2.72	0.52
2010	22,355	8	0	82	11	0.36	0.00	3.67	0.49
2011	22,335	3	1	73	10	0.13	0.04	3.27	0.45
2012	22,295	0	0	91	14	0.00	0.00	4.08	0.63
2013	22,300	3	2	87	12	0.13	0.09	3.90	0.54
2014	22,355	4	2	88	17	0.18	0.09	3.94	0.76
2015	22,470	3	1	110	18	0.13	0.04	4.90	0.80
2016	22,600	1	2	108	20	0.04	0.09	4.78	0.88
2017	22,805	0	0	112	16	0.00	0.00	4.91	0.70
2018	22,915	2	0	103	13	0.09	0.00	4.49	0.57

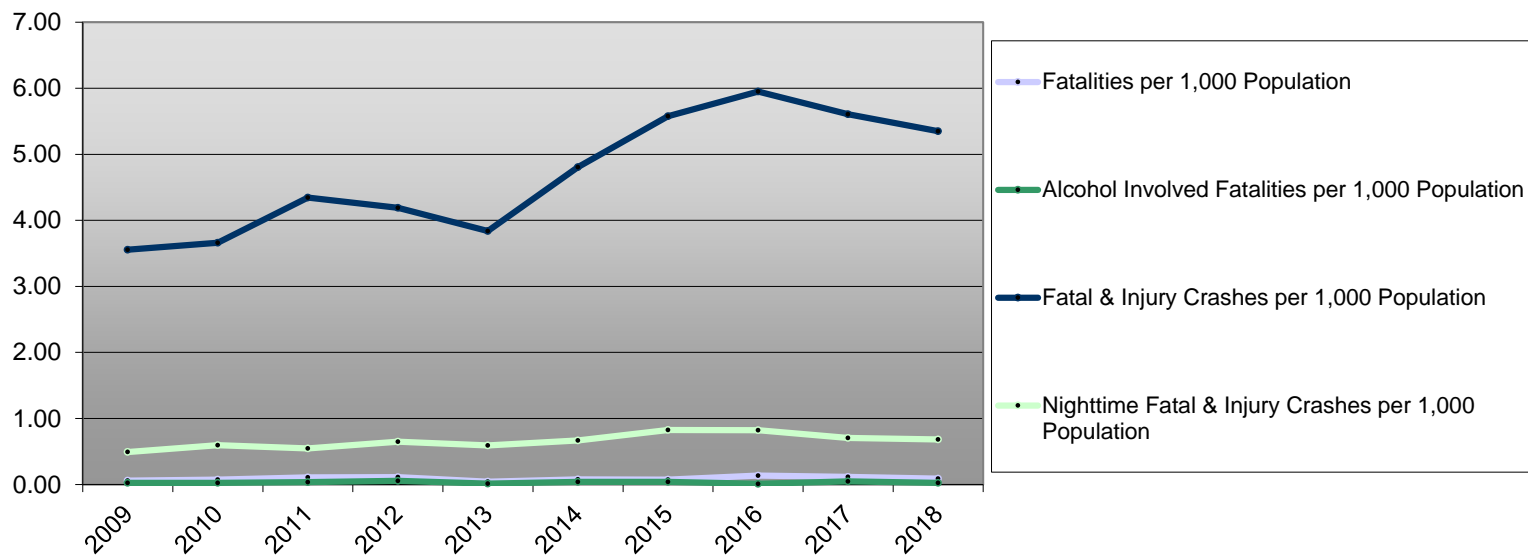
Curry County Fatal & Injury Crashes



Deschutes County 10-Year Traffic Crash Data (2009-2018)

Year	Population	Fatalities	Alcohol Involved Fatalities	Fatal & Injury Crashes	Night time Fatal & Injury Crashes	Fatalities per 1,000 Population	Alcohol Involved Fatalities per 1,000 Population	Fatal & Injury Crashes per 1,000 Population	Nighttime Fatal & Injury Crashes per 1,000 Population
2009	170,705	10	4	607	84	0.06	0.02	3.56	0.49
2010	157,905	12	4	578	94	0.08	0.03	3.66	0.60
2011	158,875	17	6	690	87	0.11	0.04	4.34	0.55
2012	160,140	18	9	671	104	0.11	0.06	4.19	0.65
2013	162,525	7	2	624	96	0.04	0.01	3.84	0.59
2014	166,400	13	7	800	111	0.08	0.04	4.81	0.67
2015	170,740	13	7	952	141	0.08	0.04	5.58	0.83
2016	176,635	24	2	1,051	145	0.14	0.01	5.95	0.82
2017	182,930	21	9	1,026	129	0.11	0.05	5.61	0.71
2018	188,980	17	5	1,011	129	0.09	0.03	5.35	0.68

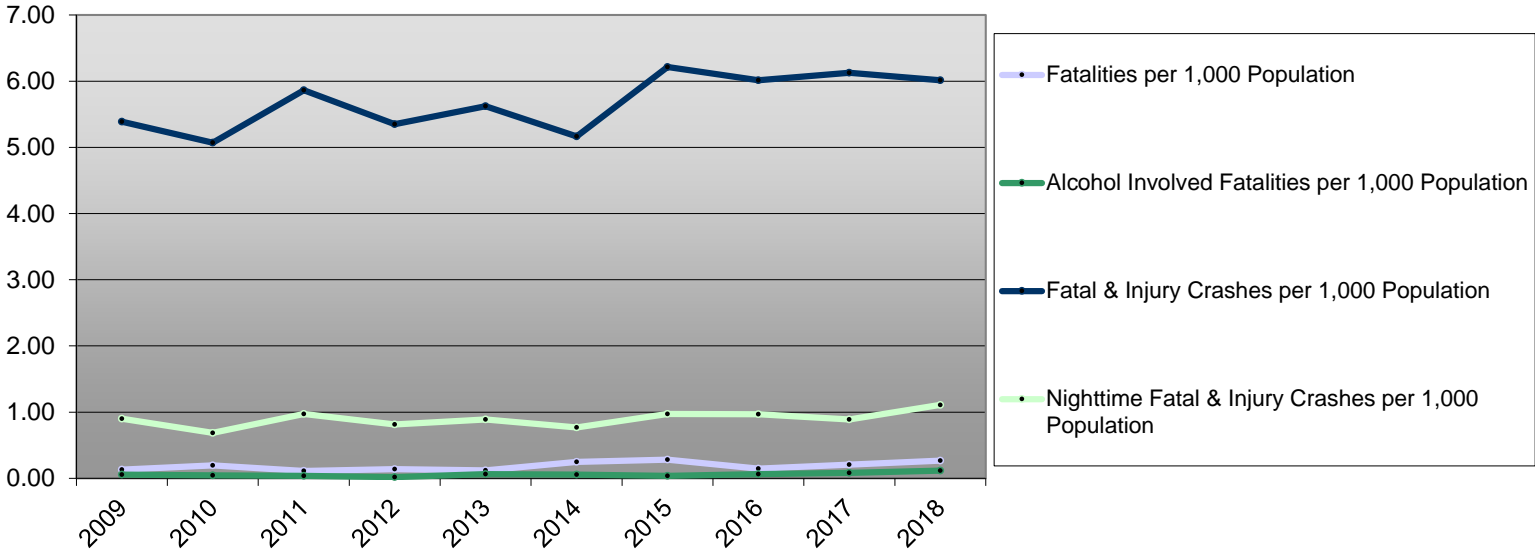
Deschutes County Fatal & Injury Crashes



Douglas County 10-Year Traffic Crash Data (2009-2018)

Year	Population	Fatalities	Alcohol Involved Fatalities	Fatal & Injury Crashes	Night time Fatal & Injury Crashes	Fatalities per 1,000 Population	Alcohol Involved Fatalities per 1,000 Population	Fatal & Injury Crashes per 1,000 Population	Nighttime Fatal & Injury Crashes per 1,000 Population
2009	105,395	14	6	568	95	0.13	0.06	5.39	0.90
2010	107,690	21	5	546	74	0.20	0.05	5.07	0.69
2011	107,795	12	4	632	105	0.11	0.04	5.86	0.97
2012	108,195	15	2	579	88	0.14	0.02	5.35	0.81
2013	108,850	13	7	612	97	0.12	0.06	5.62	0.89
2014	109,385	27	6	565	84	0.25	0.05	5.17	0.77
2015	109,910	31	4	683	107	0.28	0.04	6.21	0.97
2016	110,395	16	7	664	107	0.14	0.06	6.01	0.97
2017	111,180	23	9	681	99	0.21	0.08	6.13	0.89
2018	111,735	30	13	672	124	0.27	0.12	6.01	1.11

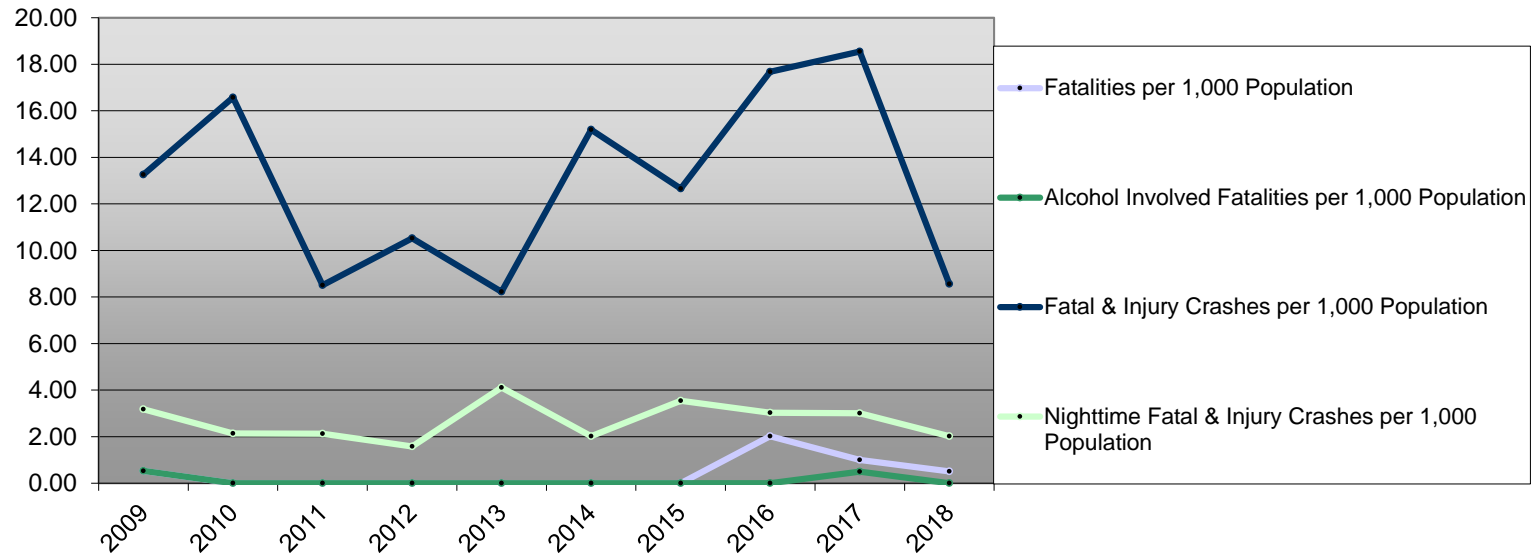
Douglas County Fatal & Injury Crashes



Gilliam County 10-Year Traffic Crash Data (2009-2018)

Year	Population	Fatalities	Alcohol Involved Fatalities	Fatal & Injury Crashes	Night time Fatal & Injury Crashes	Fatalities per 1,000 Population	Alcohol Involved Fatalities per 1,000 Population	Fatal & Injury Crashes per 1,000 Population	Nighttime Fatal & Injury Crashes per 1,000 Population
2009	1,885	1	1	25	6	0.53	0.53	13.26	3.18
2010	1,870	0	0	31	4	0.00	0.00	16.58	2.14
2011	1,880	0	0	16	4	0.00	0.00	8.51	2.13
2012	1,900	0	0	20	3	0.00	0.00	10.53	1.58
2013	1,945	0	0	16	8	0.00	0.00	8.23	4.11
2014	1,975	0	0	30	4	0.00	0.00	15.19	2.03
2015	1,975	0	0	25	7	0.00	0.00	12.66	3.54
2016	1,980	4	0	35	6	2.02	0.00	17.68	3.03
2017	1,995	2	1	37	6	1.00	0.50	18.55	3.01
2018	1,985	1	0	17	4	0.50	0.00	8.56	2.02

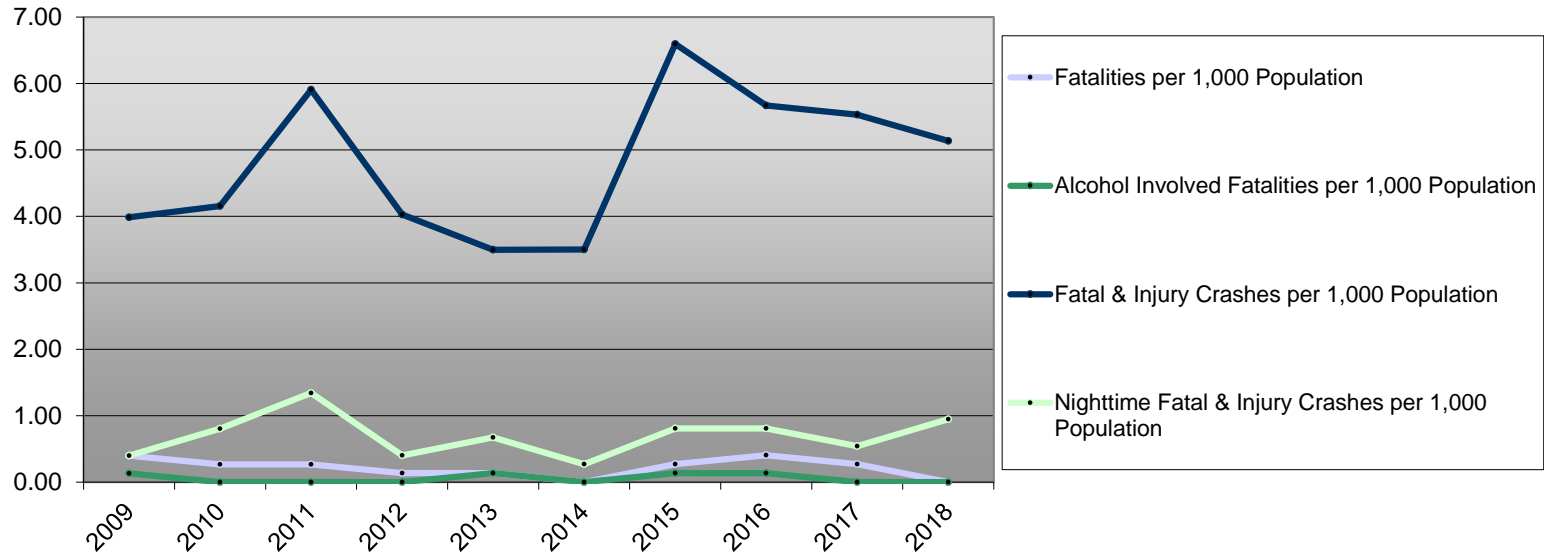
Gilliam County Fatal & Injury Crashes



Grant County 10-Year Traffic Crash Data (2009-2018)

Year	Population	Fatalities	Alcohol Involved Fatalities	Fatal & Injury Crashes	Night time Fatal & Injury Crashes	Fatalities per 1,000 Population	Alcohol Involved Fatalities per 1,000 Population	Fatal & Injury Crashes per 1,000 Population	Nighttime Fatal & Injury Crashes per 1,000 Population
2009	7,525	3	1	30	3	0.40	0.13	3.99	0.40
2010	7,460	2	0	31	6	0.27	0.00	4.16	0.80
2011	7,450	2	0	44	10	0.27	0.00	5.91	1.34
2012	7,450	1	0	30	3	0.13	0.00	4.03	0.40
2013	7,435	1	1	26	5	0.13	0.13	3.50	0.67
2014	7,425	0	0	26	2	0.00	0.00	3.50	0.27
2015	7,430	2	1	49	6	0.27	0.13	6.59	0.81
2016	7,410	3	1	42	6	0.40	0.13	5.67	0.81
2017	7,415	2	0	41	4	0.27	0.00	5.53	0.54
2018	7,400	0	0	38	7	0.00	0.00	5.14	0.95

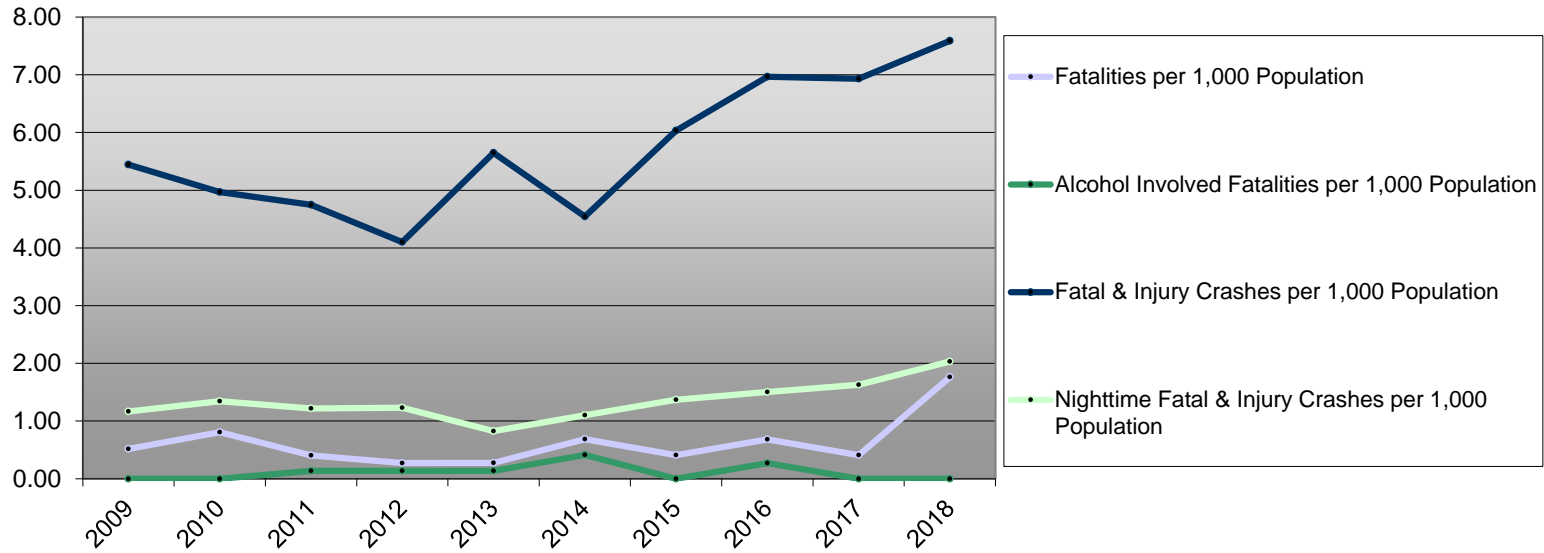
Grant County Fatal & Injury Crashes



Harney County 10-Year Traffic Crash Data (2009-2018)

Year	Population	Fatalities	Alcohol Involved Fatalities	Fatal & Injury Crashes	Night time Fatal & Injury Crashes	Fatalities per 1,000 Population	Alcohol Involved Fatalities per 1,000 Population	Fatal & Injury Crashes per 1,000 Population	Nighttime Fatal & Injury Crashes per 1,000 Population
2009	7,715	4	0	42	9	0.52	0.00	5.44	1.17
2010	7,445	6	0	37	10	0.81	0.00	4.97	1.34
2011	7,375	3	1	35	9	0.41	0.14	4.75	1.22
2012	7,315	2	1	30	9	0.27	0.14	4.10	1.23
2013	7,260	2	1	41	6	0.28	0.14	5.65	0.83
2014	7,265	5	3	33	8	0.69	0.41	4.54	1.10
2015	7,295	3	0	44	10	0.41	0.00	6.03	1.37
2016	7,320	5	2	51	11	0.68	0.27	6.97	1.50
2017	7,360	3	0	51	12	0.41	0.00	6.93	1.63
2018	7,380	13	0	56	15	1.76	0.00	7.59	2.03

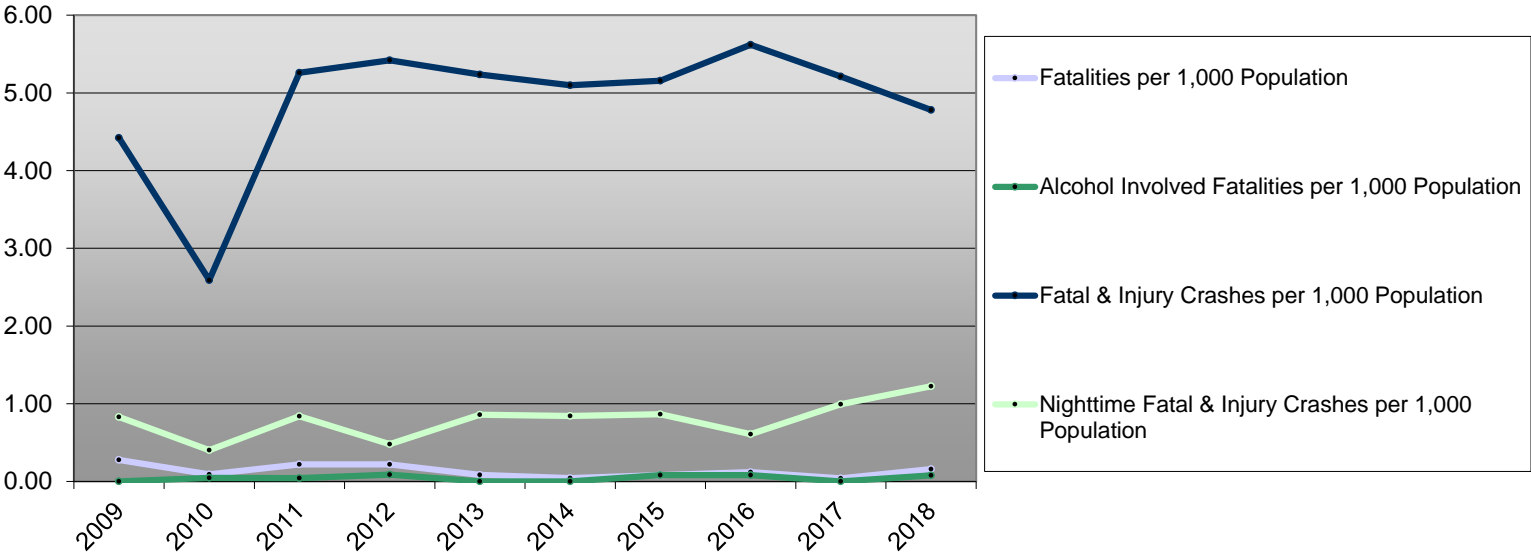
Harney County Fatal & Injury Crashes



Hood River County 10-Year Traffic Crash Data (2009-2018)

Year	Population	Fatalities	Alcohol Involved Fatalities	Fatal & Injury Crashes	Night time Fatal & Injury Crashes	Fatalities per 1,000 Population	Alcohol Involved Fatalities per 1,000 Population	Fatal & Injury Crashes per 1,000 Population	Nighttime Fatal & Injury Crashes per 1,000 Population
2009	21,725	6	0	96	18	0.28	0.00	4.42	0.83
2010	22,385	2	1	58	9	0.09	0.04	2.59	0.40
2011	22,625	5	1	119	19	0.22	0.04	5.26	0.84
2012	22,875	5	2	124	11	0.22	0.09	5.42	0.48
2013	23,295	2	0	122	20	0.09	0.00	5.24	0.86
2014	23,730	1	0	121	20	0.04	0.00	5.10	0.84
2015	24,245	2	2	125	21	0.08	0.08	5.16	0.87
2016	24,735	3	2	139	15	0.12	0.08	5.62	0.61
2017	25,145	1	0	131	25	0.04	0.00	5.21	0.99
2018	25,310	4	2	121	31	0.16	0.08	4.78	1.22

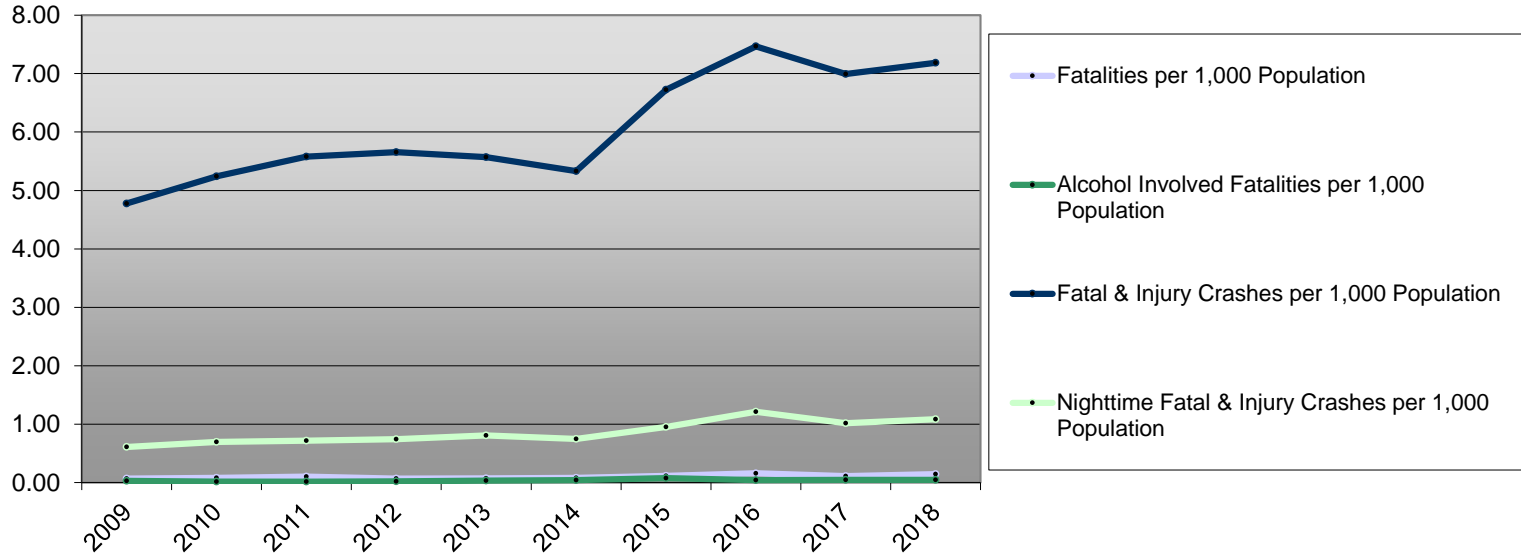
Hood River County Fatal & Injury Crashes



Jackson County 10-Year Traffic Crash Data (2009-2018)

Year	Population	Fatalities	Alcohol Involved Fatalities	Fatal & Injury Crashes	Night time Fatal & Injury Crashes	Fatalities per 1,000 Population	Alcohol Involved Fatalities per 1,000 Population	Fatal & Injury Crashes per 1,000 Population	Nighttime Fatal & Injury Crashes per 1,000 Population
2009	207,010	14	6	989	126	0.07	0.03	4.78	0.61
2010	203,340	16	3	1,066	141	0.08	0.01	5.24	0.69
2011	203,950	21	3	1,138	146	0.10	0.01	5.58	0.72
2012	204,630	14	4	1,157	152	0.07	0.02	5.65	0.74
2013	206,310	15	7	1,149	166	0.07	0.03	5.57	0.80
2014	208,375	17	9	1,111	156	0.08	0.04	5.33	0.75
2015	210,975	24	16	1,419	201	0.11	0.08	6.73	0.95
2016	213,765	34	9	1,596	259	0.16	0.04	7.47	1.21
2017	216,900	24	10	1,517	220	0.11	0.05	6.99	1.01
2018	219,200	32	10	1,575	238	0.15	0.05	7.19	1.09

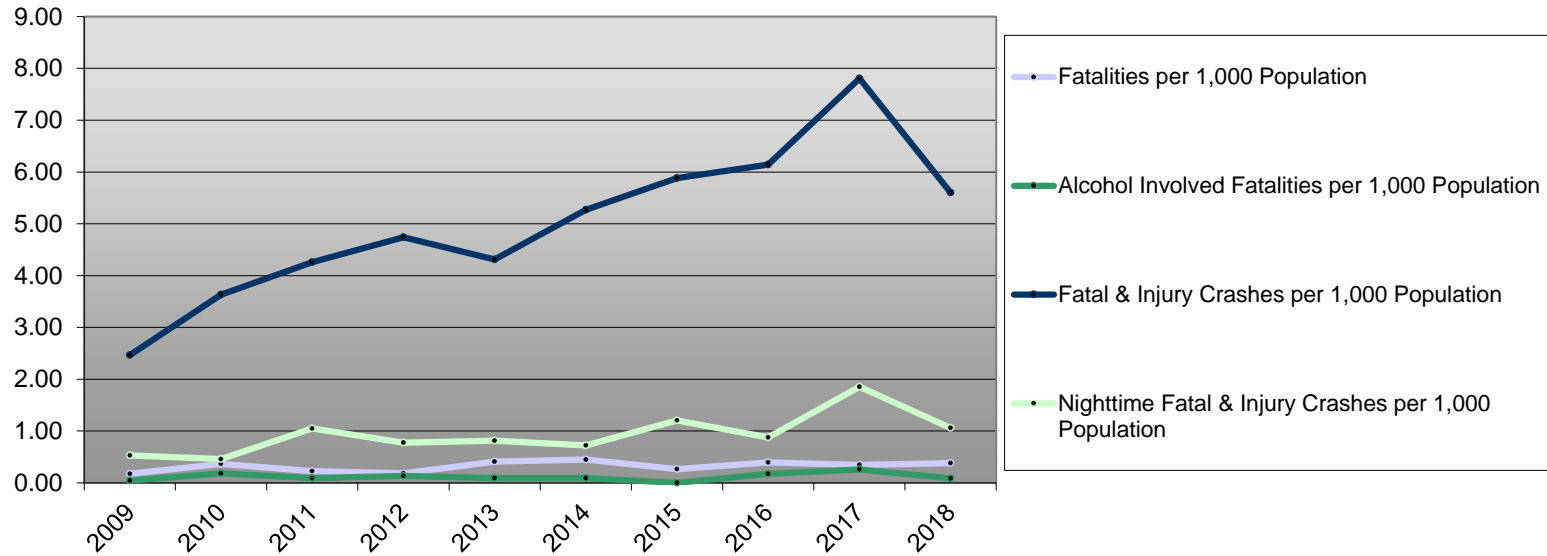
Jackson County Fatal & Injury Crashes



Jefferson County 10-Year Traffic Crash Data (2009-2018)

Year	Population	Fatalities	Alcohol Involved Fatalities	Fatal & Injury Crashes	Night time Fatal & Injury Crashes	Fatalities per 1,000 Population	Alcohol Involved Fatalities per 1,000 Population	Fatal & Injury Crashes per 1,000 Population	Nighttime Fatal & Injury Crashes per 1,000 Population
2009	22,715	4	1	56	12	0.18	0.04	2.47	0.53
2010	21,750	8	4	79	10	0.37	0.18	3.63	0.46
2011	21,845	5	2	93	23	0.23	0.09	4.26	1.05
2012	21,940	4	3	104	17	0.18	0.14	4.74	0.77
2013	22,040	9	2	95	18	0.41	0.09	4.31	0.82
2014	22,205	10	2	117	16	0.45	0.09	5.27	0.72
2015	22,445	6	0	132	27	0.27	0.00	5.88	1.20
2016	22,790	9	4	140	20	0.39	0.18	6.14	0.88
2017	23,190	8	6	181	43	0.34	0.26	7.81	1.85
2018	23,560	9	2	132	25	0.38	0.08	5.60	1.06

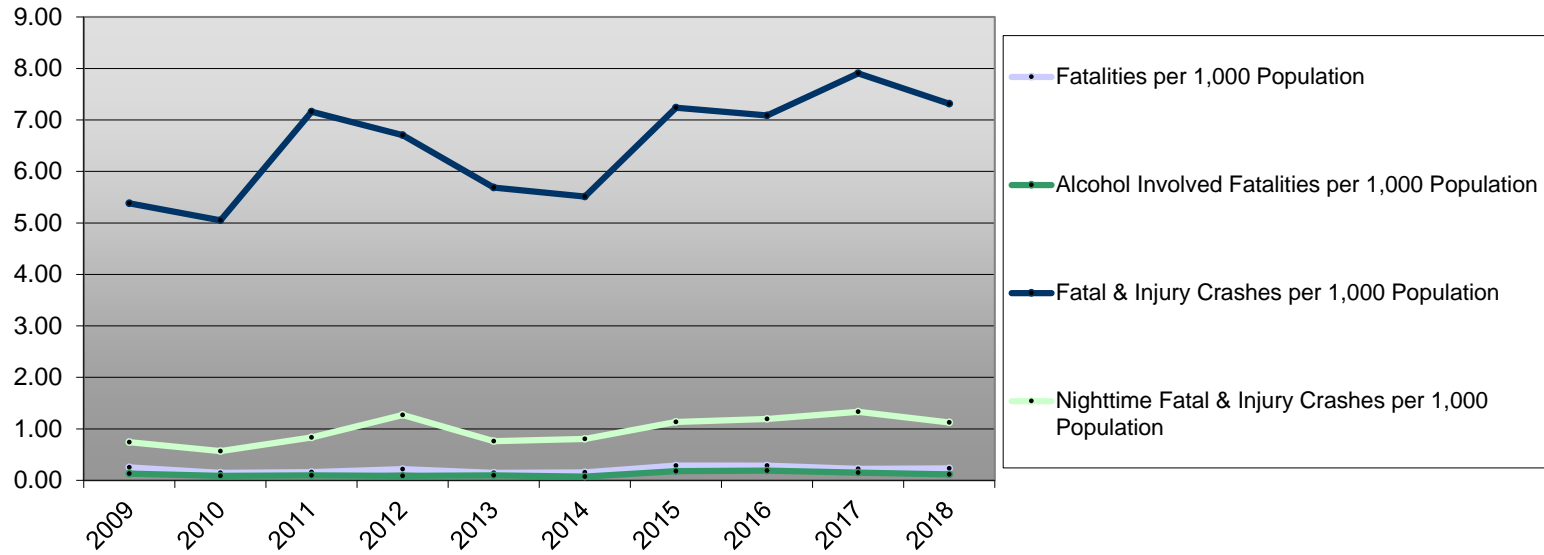
Jefferson County Fatal & Injury Crashes



Josephine County 10-Year Traffic Crash Data (2009-2018)

Year	Population	Fatalities	Alcohol Involved Fatalities	Fatal & Injury Crashes	Night time Fatal & Injury Crashes	Fatalities per 1,000 Population	Alcohol Involved Fatalities per 1,000 Population	Fatal & Injury Crashes per 1,000 Population	Nighttime Fatal & Injury Crashes per 1,000 Population
2009	83,665	21	11	450	62	0.25	0.13	5.38	0.74
2010	82,775	12	7	418	47	0.14	0.08	5.05	0.57
2011	82,820	13	8	593	69	0.16	0.10	7.16	0.83
2012	82,775	18	7	555	105	0.22	0.08	6.70	1.27
2013	82,815	12	8	471	63	0.14	0.10	5.69	0.76
2014	83,105	13	6	458	67	0.16	0.07	5.51	0.81
2015	83,720	24	15	606	95	0.29	0.18	7.24	1.13
2016	84,675	24	16	600	101	0.28	0.19	7.09	1.19
2017	85,650	19	13	677	114	0.22	0.15	7.90	1.33
2018	86,395	20	10	632	97	0.23	0.12	7.32	1.12

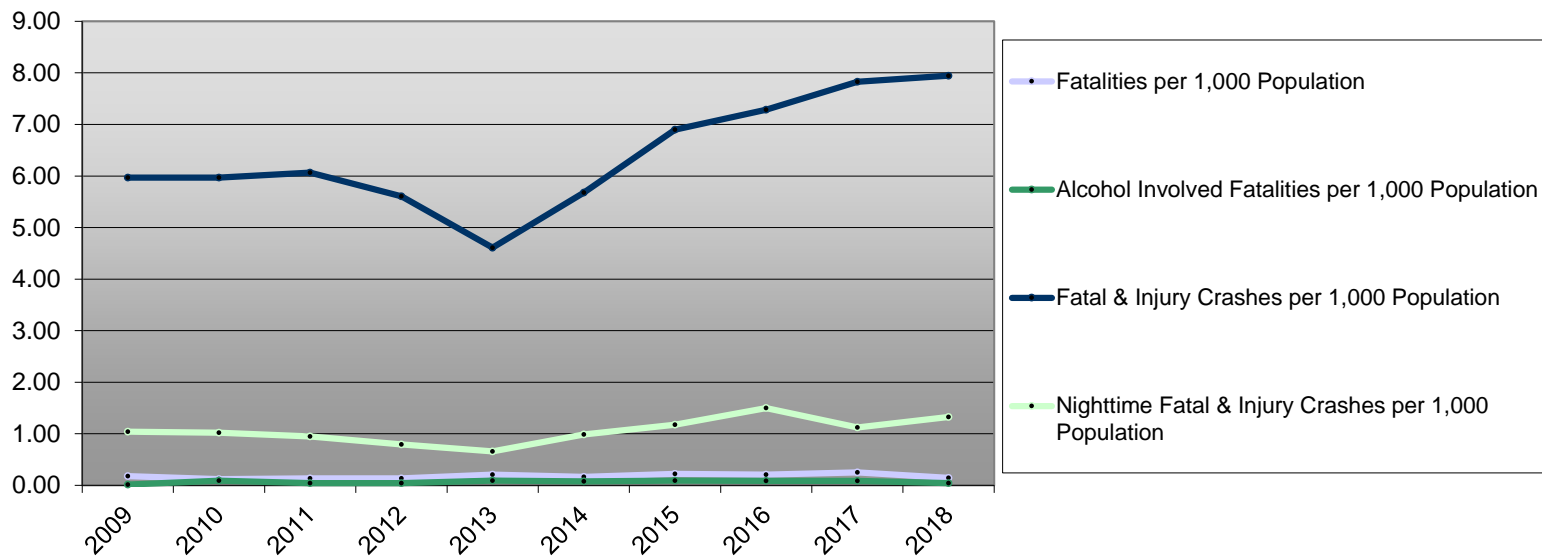
Josephine County Fatal & Injury Crashes



Klamath County 10-Year Traffic Crash Data (2009-2018)

Year	Population	Fatalities	Alcohol Involved Fatalities	Fatal & Injury Crashes	Night time Fatal & Injury Crashes	Fatalities per 1,000 Population	Alcohol Involved Fatalities per 1,000 Population	Fatal & Injury Crashes per 1,000 Population	Nighttime Fatal & Injury Crashes per 1,000 Population
2009	66,350	12	1	396	69	0.18	0.02	5.97	1.04
2010	66,505	8	6	397	68	0.12	0.09	5.97	1.02
2011	66,580	9	3	404	63	0.14	0.05	6.07	0.95
2012	66,740	9	3	374	53	0.13	0.04	5.60	0.79
2013	66,810	14	6	308	44	0.21	0.09	4.61	0.66
2014	66,910	11	5	380	66	0.16	0.07	5.68	0.99
2015	67,110	15	6	463	79	0.22	0.09	6.90	1.18
2016	67,410	14	6	491	101	0.21	0.09	7.28	1.50
2017	67,690	17	6	530	76	0.25	0.09	7.83	1.12
2018	67,960	10	3	540	90	0.15	0.04	7.95	1.32

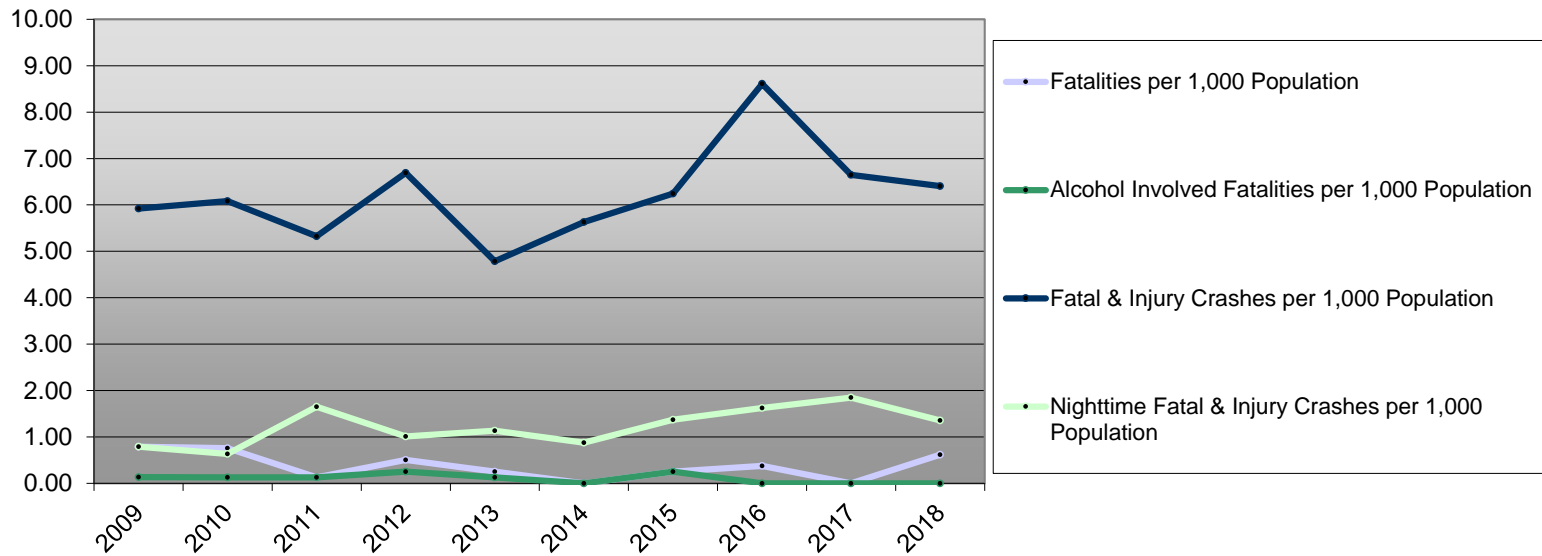
Klamath County Fatal & Injury Crashes



Lake County 10-Year Traffic Crash Data (2009-2018)

Year	Population	Fatalities	Alcohol Involved Fatalities	Fatal & Injury Crashes	Night time Fatal & Injury Crashes	Fatalities per 1,000 Population	Alcohol Involved Fatalities per 1,000 Population	Fatal & Injury Crashes per 1,000 Population	Nighttime Fatal & Injury Crashes per 1,000 Population
2009	7,600	6	1	45	6	0.79	0.13	5.92	0.79
2010	7,890	6	1	48	5	0.76	0.13	6.08	0.63
2011	7,885	1	1	42	13	0.13	0.13	5.33	1.65
2012	7,920	4	2	53	8	0.51	0.25	6.69	1.01
2013	7,940	2	1	38	9	0.25	0.13	4.79	1.13
2014	7,990	0	0	45	7	0.00	0.00	5.63	0.88
2015	8,010	2	2	50	11	0.25	0.25	6.24	1.37
2016	8,015	3	0	69	13	0.37	0.00	8.61	1.62
2017	8,120	0	0	54	15	0.00	0.00	6.65	1.85
2018	8,115	5	0	52	11	0.62	0.00	6.41	1.36

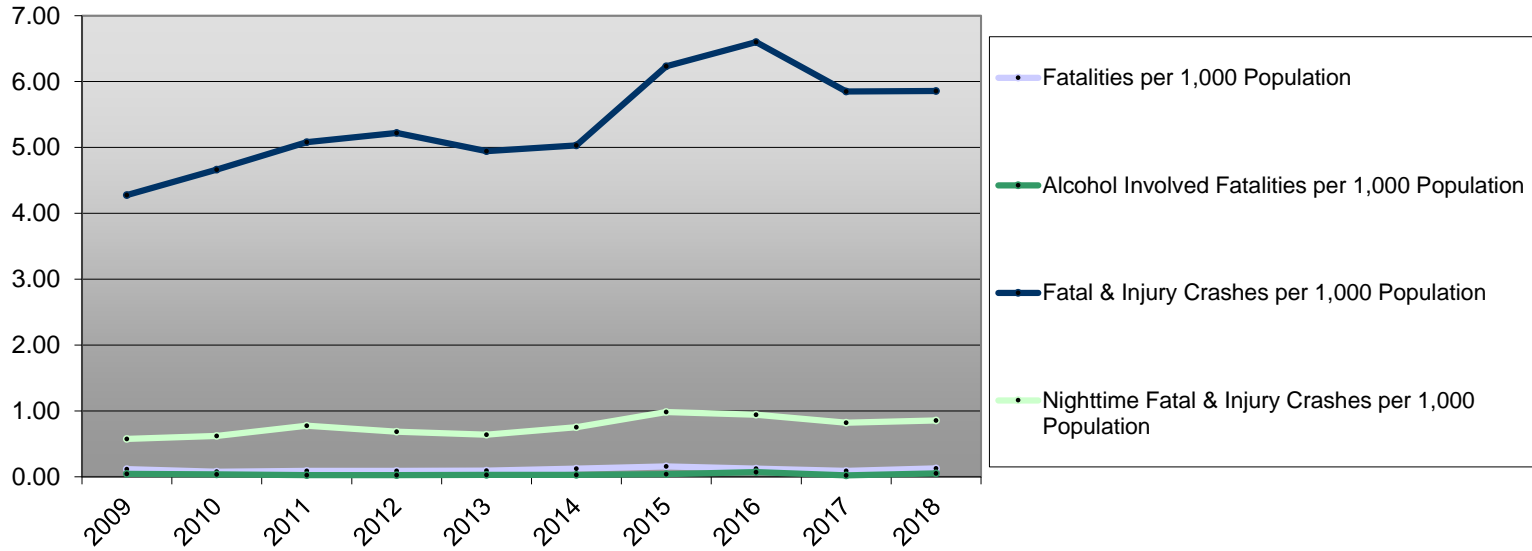
Lake County Fatal & Injury Crashes



Lane County 10-Year Traffic Crash Data (2009-2018)

Year	Population	Fatalities	Alcohol Involved Fatalities	Fatal & Injury Crashes	Night time Fatal & Injury Crashes	Fatalities per 1,000 Population	Alcohol Involved Fatalities per 1,000 Population	Fatal & Injury Crashes per 1,000 Population	Nighttime Fatal & Injury Crashes per 1,000 Population
2009	347,690	40	15	1,487	200	0.12	0.04	4.28	0.58
2010	352,010	27	13	1,641	219	0.08	0.04	4.66	0.62
2011	353,155	32	9	1,794	274	0.09	0.03	5.08	0.78
2012	354,200	32	9	1,849	242	0.09	0.03	5.22	0.68
2013	356,125	33	11	1,760	228	0.09	0.03	4.94	0.64
2014	358,805	45	10	1,805	270	0.13	0.03	5.03	0.75
2015	362,150	57	15	2,257	356	0.16	0.04	6.23	0.98
2016	365,940	45	26	2,415	345	0.12	0.07	6.60	0.94
2017	370,600	33	8	2,168	305	0.09	0.02	5.85	0.82
2018	375,120	48	19	2,197	321	0.13	0.05	5.86	0.86

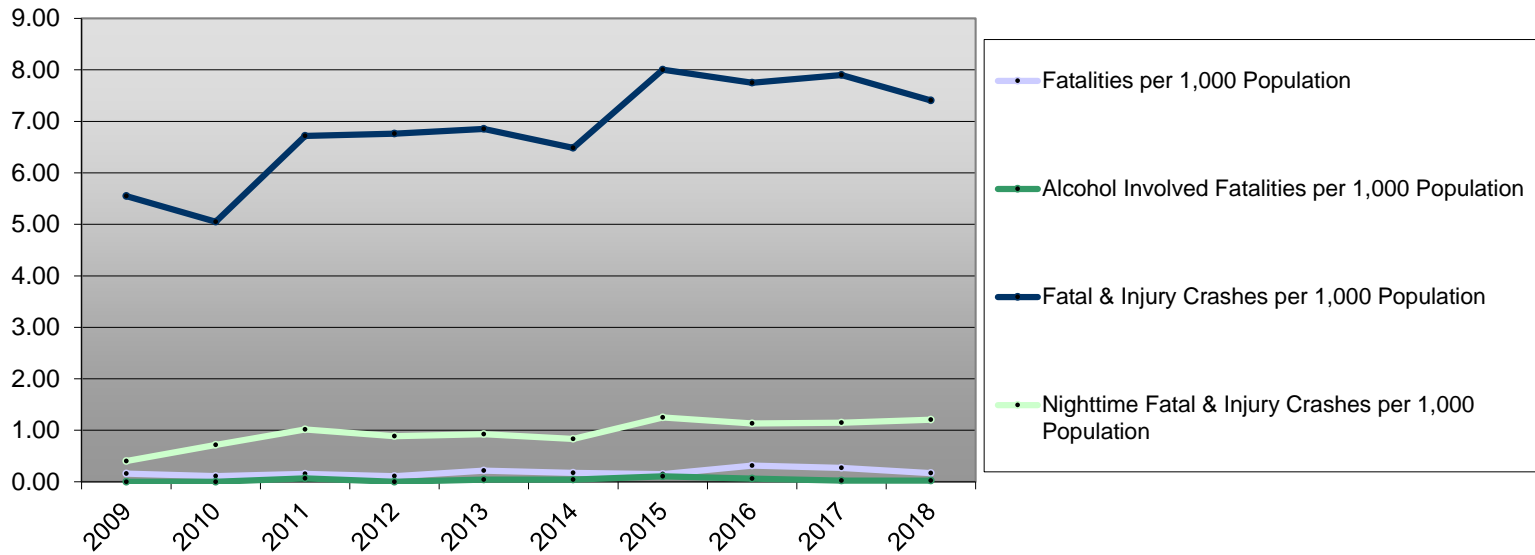
Lane County Fatal & Injury Crashes



Lincoln County 10-Year Traffic Crash Data (2009-2018)

Year	Population	Fatalities	Alcohol Involved Fatalities	Fatal & Injury Crashes	Night time Fatal & Injury Crashes	Fatalities per 1,000 Population	Alcohol Involved Fatalities per 1,000 Population	Fatal & Injury Crashes per 1,000 Population	Nighttime Fatal & Injury Crashes per 1,000 Population
2009	44,700	7	0	248	18	0.16	0.00	5.55	0.40
2010	46,135	5	0	233	33	0.11	0.00	5.05	0.72
2011	46,155	7	3	310	47	0.15	0.06	6.72	1.02
2012	46,295	5	0	313	41	0.11	0.00	6.76	0.89
2013	46,560	10	2	319	43	0.21	0.04	6.85	0.92
2014	46,890	8	2	304	39	0.17	0.04	6.48	0.83
2015	47,225	7	5	378	59	0.15	0.11	8.00	1.25
2016	47,735	15	3	370	54	0.31	0.06	7.75	1.13
2017	47,960	13	1	379	55	0.27	0.02	7.90	1.15
2018	48,210	8	1	357	58	0.17	0.02	7.41	1.20

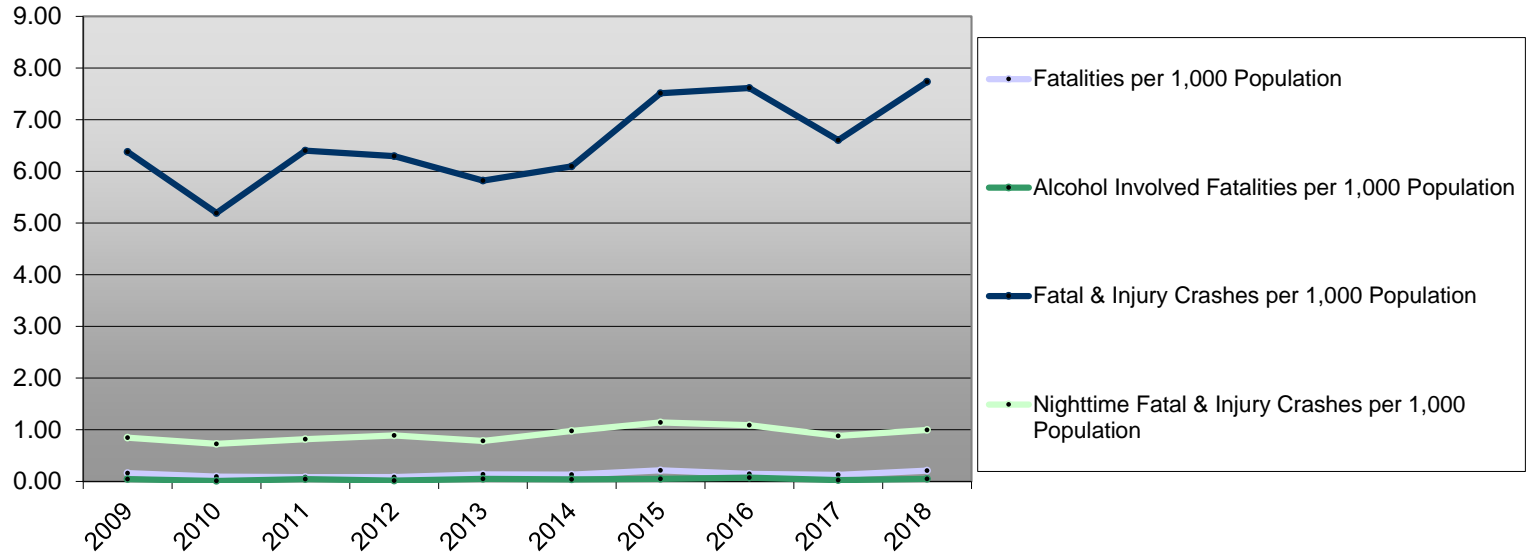
Lincoln County Fatal & Injury Crashes



Linn County 10-Year Traffic Crash Data (2009-2018)

Year	Population	Fatalities	Alcohol Involved Fatalities	Fatal & Injury Crashes	Night time Fatal & Injury Crashes	Fatalities per 1,000 Population	Alcohol Involved Fatalities per 1,000 Population	Fatal & Injury Crashes per 1,000 Population	Nighttime Fatal & Injury Crashes per 1,000 Population
2009	110,865	18	5	707	94	0.16	0.05	6.38	0.85
2010	116,840	11	1	607	85	0.09	0.01	5.20	0.73
2011	117,340	10	5	751	96	0.09	0.04	6.40	0.82
2012	118,035	10	2	743	105	0.08	0.02	6.29	0.89
2013	118,665	16	6	691	93	0.13	0.05	5.82	0.78
2014	119,705	16	5	730	117	0.13	0.04	6.10	0.98
2015	120,860	26	6	908	138	0.22	0.05	7.51	1.14
2016	122,315	18	9	931	133	0.15	0.07	7.61	1.09
2017	124,010	16	3	819	109	0.13	0.02	6.60	0.88
2018	125,575	26	6	971	125	0.21	0.05	7.73	1.00

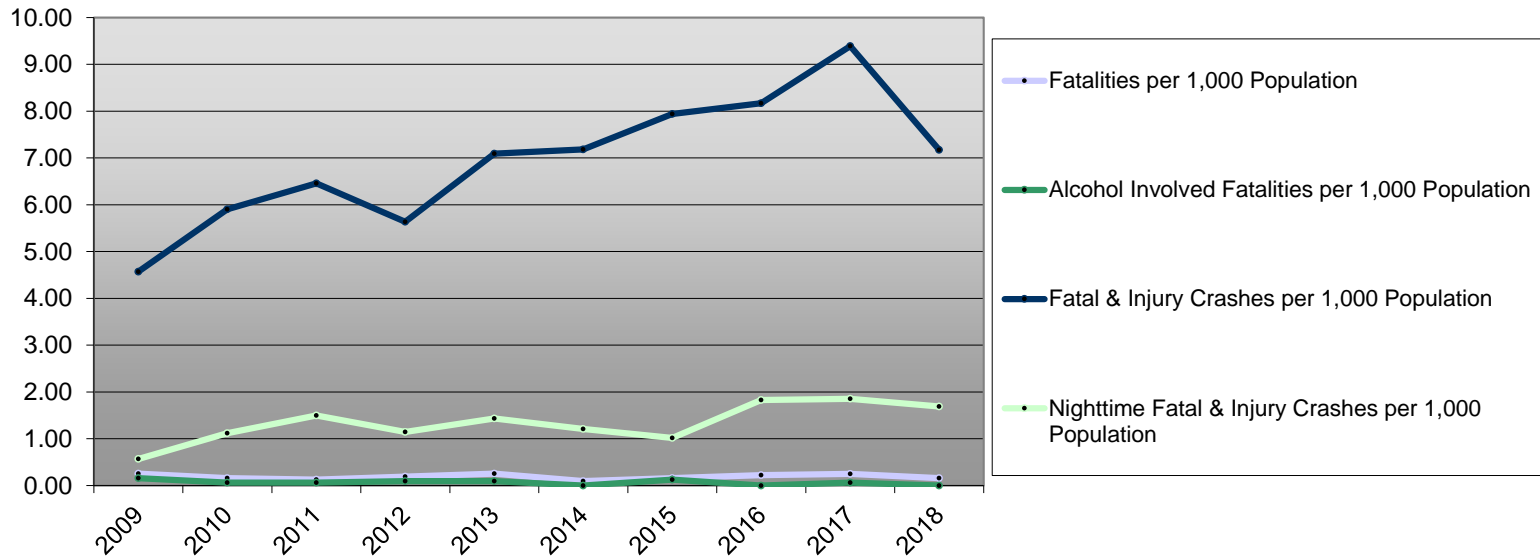
Linn County Fatal & Injury Crashes



Malheur County 10-Year Traffic Crash Data (2009-2018)

Year	Population	Fatalities	Alcohol Involved Fatalities	Fatal & Injury Crashes	Night time Fatal & Injury Crashes	Fatalities per 1,000 Population	Alcohol Involved Fatalities per 1,000 Population	Fatal & Injury Crashes per 1,000 Population	Nighttime Fatal & Injury Crashes per 1,000 Population
2009	31,720	8	5	145	18	0.25	0.16	4.57	0.57
2010	31,345	5	2	185	35	0.16	0.06	5.90	1.12
2011	31,445	4	2	203	47	0.13	0.06	6.46	1.49
2012	31,395	6	3	177	36	0.19	0.10	5.64	1.15
2013	31,440	8	3	223	45	0.25	0.10	7.09	1.43
2014	31,470	3	0	226	38	0.10	0.00	7.18	1.21
2015	31,480	5	4	250	32	0.16	0.13	7.94	1.02
2016	31,705	7	0	259	58	0.22	0.00	8.17	1.83
2017	31,845	8	2	299	59	0.25	0.06	9.39	1.85
2018	31,925	5	0	229	54	0.16	0.00	7.17	1.69

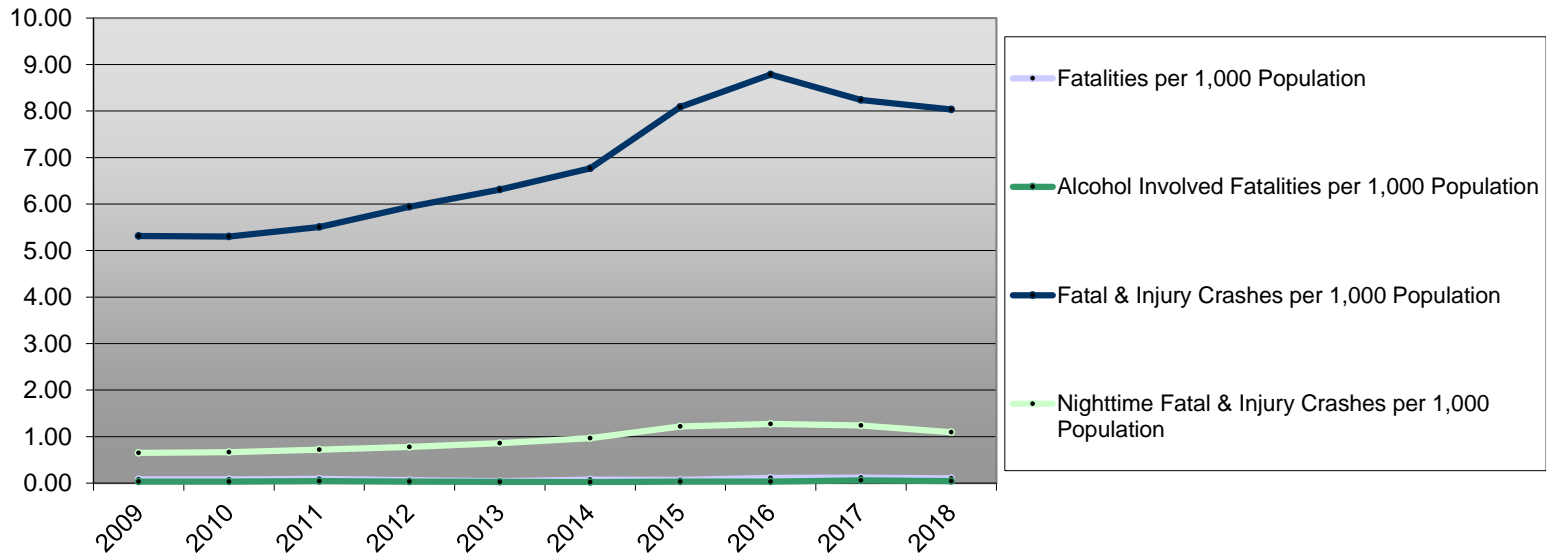
Malheur County Fatal & Injury Crashes



Marion County 10-Year Traffic Crash Data (2009-2018)

Year	Population	Fatalities	Alcohol Involved Fatalities	Fatal & Injury Crashes	Night time Fatal & Injury Crashes	Fatalities per 1,000 Population	Alcohol Involved Fatalities per 1,000 Population	Fatal & Injury Crashes per 1,000 Population	Nighttime Fatal & Injury Crashes per 1,000 Population
2009	318,170	25	10	1,691	207	0.08	0.03	5.31	0.65
2010	315,900	25	11	1,675	211	0.08	0.03	5.30	0.67
2011	318,150	29	13	1,752	229	0.09	0.04	5.51	0.72
2012	320,495	20	11	1,905	249	0.06	0.03	5.94	0.78
2013	322,880	14	9	2,038	277	0.04	0.03	6.31	0.86
2014	326,150	24	7	2,208	315	0.07	0.02	6.77	0.97
2015	329,770	24	10	2,668	402	0.07	0.03	8.09	1.22
2016	333,950	37	11	2,934	425	0.11	0.03	8.79	1.27
2017	339,200	40	20	2,795	421	0.12	0.06	8.24	1.24
2018	344,035	35	14	2,765	376	0.10	0.04	8.04	1.09

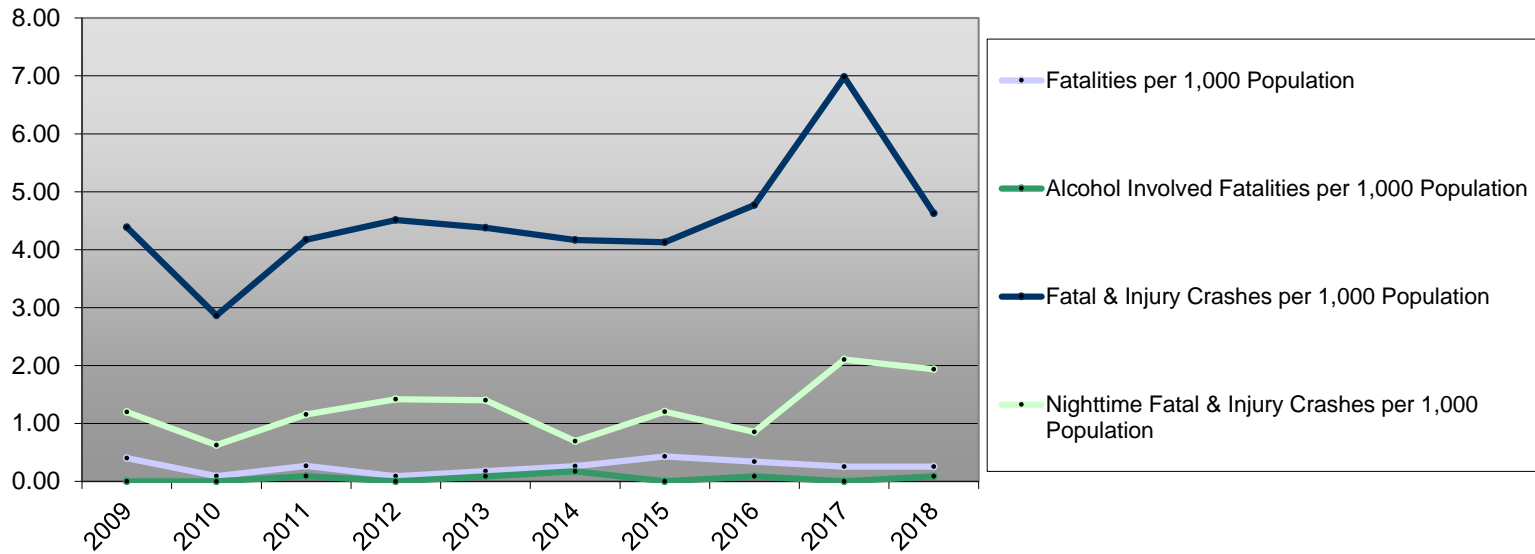
Marion County Fatal & Injury Crashes



Morrow County 10-Year Traffic Crash Data (2009-2018)

Year	Population	Fatalities	Alcohol Involved Fatalities	Fatal & Injury Crashes	Night time Fatal & Injury Crashes	Fatalities per 1,000 Population	Alcohol Involved Fatalities per 1,000 Population	Fatal & Injury Crashes per 1,000 Population	Nighttime Fatal & Injury Crashes per 1,000 Population
2009	12,540	5	0	55	15	0.40	0.00	4.39	1.20
2010	11,175	1	0	32	7	0.09	0.00	2.86	0.63
2011	11,270	3	1	47	13	0.27	0.09	4.17	1.15
2012	11,300	1	0	51	16	0.09	0.00	4.51	1.42
2013	11,425	2	1	50	16	0.18	0.09	4.38	1.40
2014	11,525	3	2	48	8	0.26	0.17	4.16	0.69
2015	11,630	5	0	48	14	0.43	0.00	4.13	1.20
2016	11,745	4	1	56	10	0.34	0.09	4.77	0.85
2017	11,890	3	0	83	25	0.25	0.00	6.98	2.10
2018	11,885	3	1	55	23	0.25	0.08	4.63	1.94

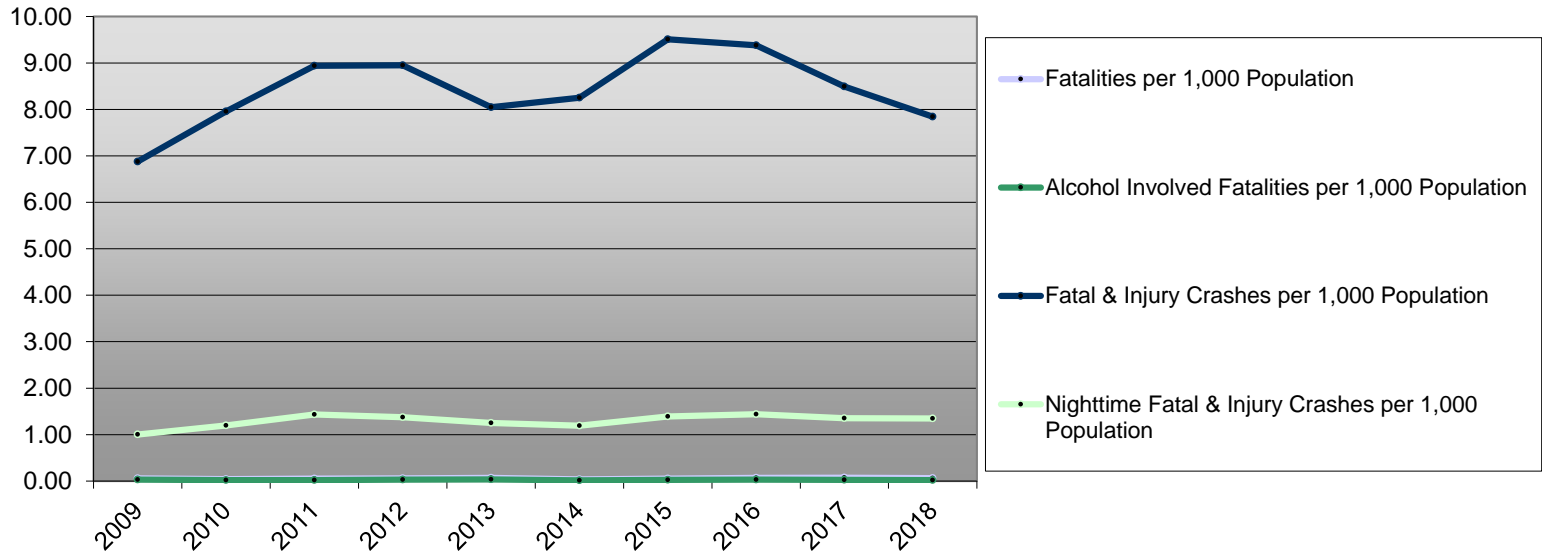
Morrow County Fatal & Injury Crashes



Multnomah County 10-Year Traffic Crash Data (2009-2018)

Year	Population	Fatalities	Alcohol Involved Fatalities	Fatal & Injury Crashes	Night time Fatal & Injury Crashes	Fatalities per 1,000 Population	Alcohol Involved Fatalities per 1,000 Population	Fatal & Injury Crashes per 1,000 Population	Nighttime Fatal & Injury Crashes per 1,000 Population
2009	724,680	42	22	4,984	726	0.06	0.03	6.88	1.00
2010	736,785	31	15	5,862	884	0.04	0.02	7.96	1.20
2011	741,925	38	17	6,634	1,065	0.05	0.02	8.94	1.44
2012	748,445	45	24	6,698	1,028	0.06	0.03	8.95	1.37
2013	756,530	52	27	6,087	948	0.07	0.04	8.05	1.25
2014	765,775	28	12	6,317	912	0.04	0.02	8.25	1.19
2015	777,490	41	19	7,393	1,080	0.05	0.02	9.51	1.39
2016	790,670	55	23	7,418	1,138	0.07	0.03	9.38	1.44
2017	803,000	58	23	6,819	1,088	0.07	0.03	8.49	1.35
2018	813,300	50	17	6,380	1,098	0.06	0.02	7.84	1.35

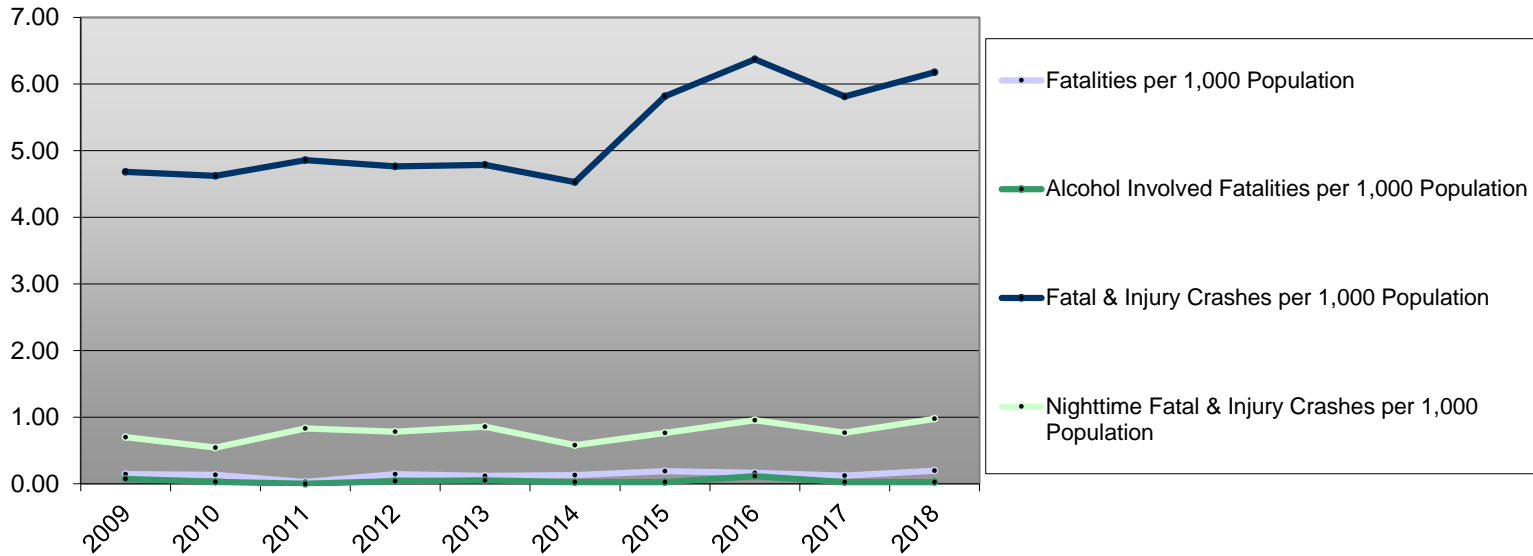
Multnomah County Fatal & Injury Crashes



Polk County 10-Year Traffic Crash Data (2009-2018)

Year	Population	Fatalities	Alcohol Involved Fatalities	Fatal & Injury Crashes	Night time Fatal & Injury Crashes	Fatalities per 1,000 Population	Alcohol Involved Fatalities per 1,000 Population	Fatal & Injury Crashes per 1,000 Population	Nighttime Fatal & Injury Crashes per 1,000 Population
2009	68,785	10	5	322	48	0.15	0.07	4.68	0.70
2010	75,495	10	2	349	41	0.13	0.03	4.62	0.54
2011	75,965	2	0	369	63	0.03	0.00	4.86	0.83
2012	76,625	11	3	365	60	0.14	0.04	4.76	0.78
2013	77,065	9	4	369	66	0.12	0.05	4.79	0.86
2014	77,735	10	2	352	45	0.13	0.03	4.53	0.58
2015	78,570	15	2	457	60	0.19	0.03	5.82	0.76
2016	79,730	13	9	508	76	0.16	0.11	6.37	0.95
2017	81,000	10	2	471	62	0.12	0.02	5.81	0.77
2018	82,100	16	2	507	80	0.19	0.02	6.18	0.97

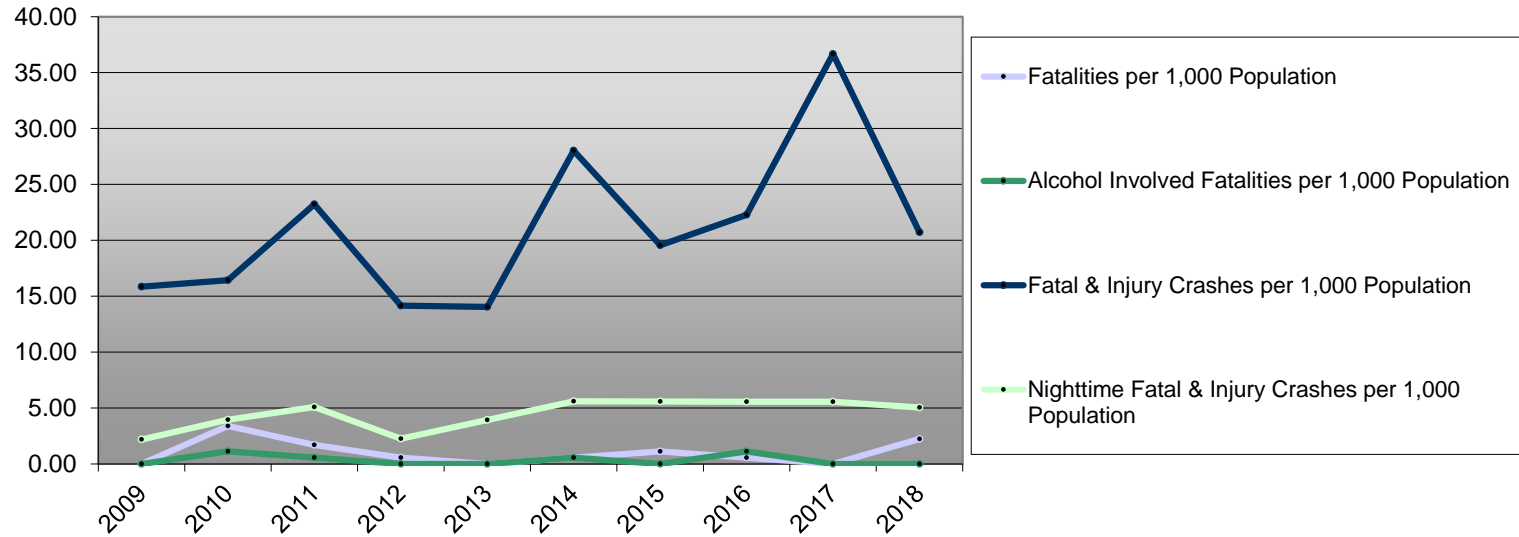
Polk County Fatal & Injury Crashes



Sherman County 10-Year Traffic Crash Data (2009-2018)

Year	Population	Fatalities	Alcohol Involved Fatalities	Fatal & Injury Crashes	Night time Fatal & Injury Crashes	Fatalities per 1,000 Population	Alcohol Involved Fatalities per 1,000 Population	Fatal & Injury Crashes per 1,000 Population	Nighttime Fatal & Injury Crashes per 1,000 Population
2009	1,830	0	0	29	4	0.00	0.00	15.85	2.19
2010	1,765	6	2	29	7	3.40	1.13	16.43	3.97
2011	1,765	3	1	41	9	1.70	0.57	23.23	5.10
2012	1,765	1	0	25	4	0.57	0.00	14.16	2.27
2013	1,780	0	0	25	7	0.00	0.00	14.04	3.93
2014	1,785	1	1	50	10	0.56	0.56	28.01	5.60
2015	1,790	2	0	35	10	1.12	0.00	19.55	5.59
2016	1,795	1	2	40	10	0.56	1.11	22.28	5.57
2017	1,800	0	0	66	10	0.00	0.00	36.67	5.56
2018	1,785	4	0	37	9	2.24	0.00	20.73	5.04

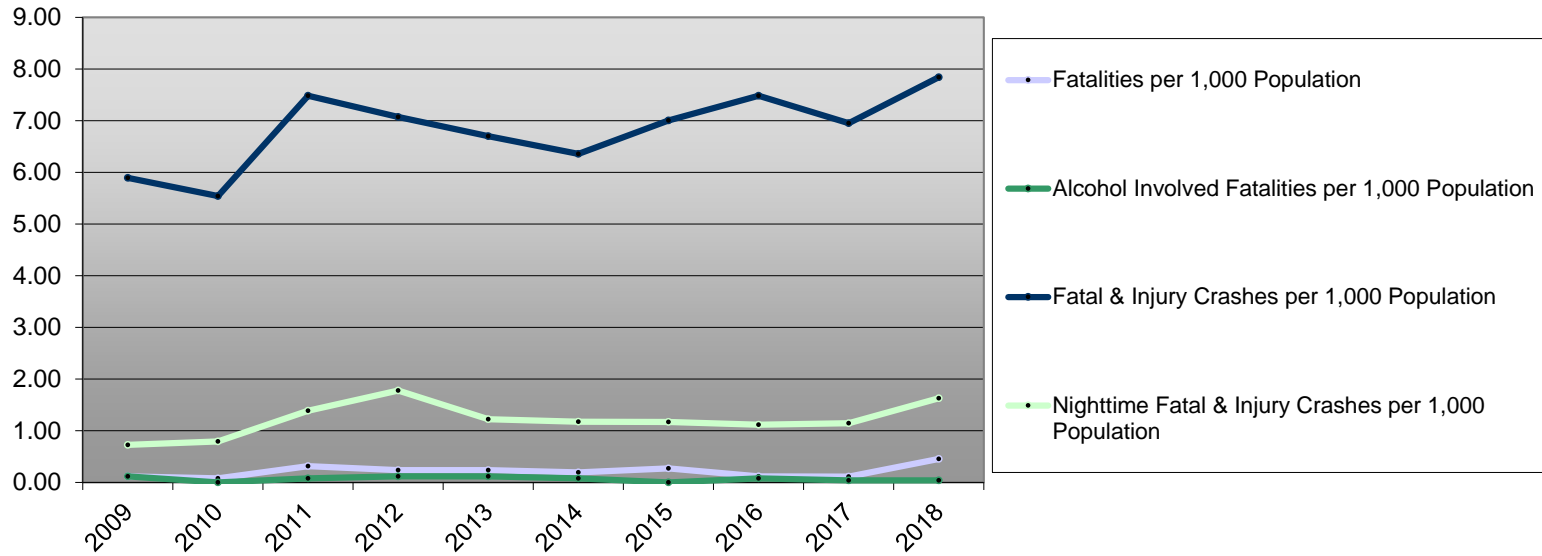
Sherman County Fatal & Injury Crashes



Tillamook County 10-Year Traffic Crash Data (2009-2018)

Year	Population	Fatalities	Alcohol Involved Fatalities	Fatal & Injury Crashes	Night time Fatal & Injury Crashes	Fatalities per 1,000 Population	Alcohol Involved Fatalities per 1,000 Population	Fatal & Injury Crashes per 1,000 Population	Nighttime Fatal & Injury Crashes per 1,000 Population
2009	26,130	3	3	154	19	0.11	0.11	5.89	0.73
2010	25,260	2	0	140	20	0.08	0.00	5.54	0.79
2011	25,255	8	2	189	35	0.32	0.08	7.48	1.39
2012	25,305	6	3	179	45	0.24	0.12	7.07	1.78
2013	25,375	6	3	170	31	0.24	0.12	6.70	1.22
2014	25,480	5	2	162	30	0.20	0.08	6.36	1.18
2015	25,690	7	0	180	30	0.27	0.00	7.01	1.17
2016	25,920	3	2	194	29	0.12	0.08	7.48	1.12
2017	26,175	3	1	182	30	0.11	0.04	6.95	1.15
2018	26,395	12	1	207	43	0.45	0.04	7.84	1.63

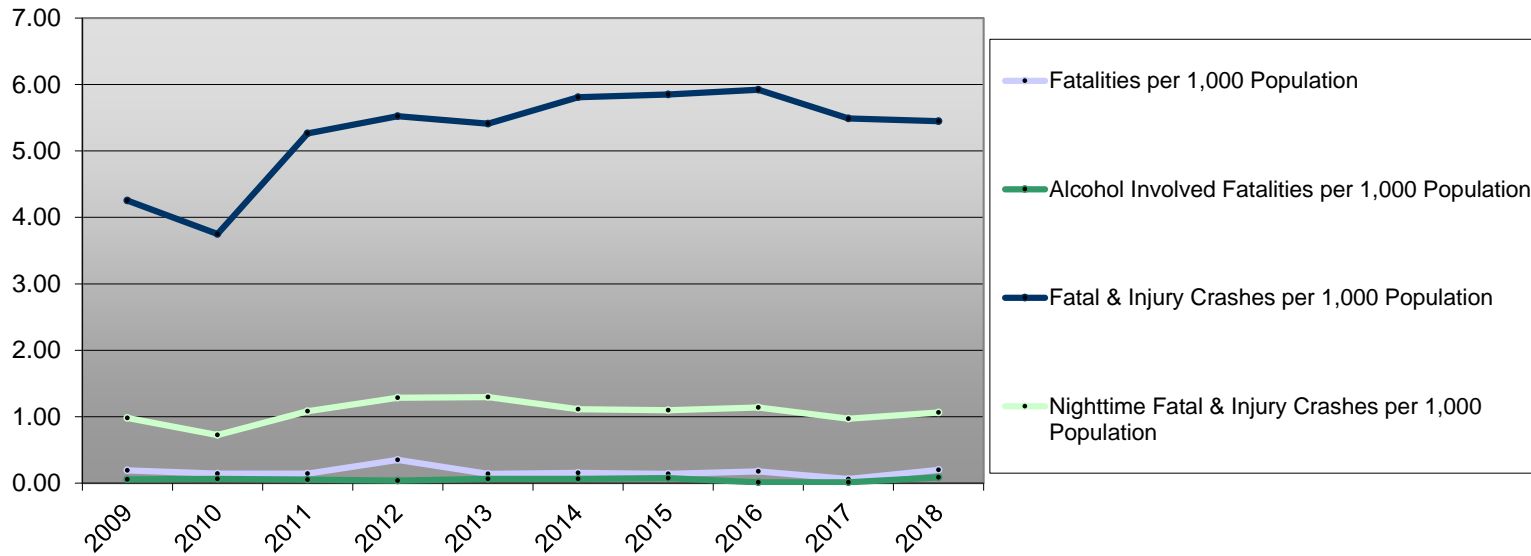
Tillamook County Fatal & Injury Crashes



Umatilla County 10-Year Traffic Crash Data (2009-2018)

Year	Population	Fatalities	Alcohol Involved Fatalities	Fatal & Injury Crashes	Night time Fatal & Injury Crashes	Fatalities per 1,000 Population	Alcohol Involved Fatalities per 1,000 Population	Fatal & Injury Crashes per 1,000 Population	Nighttime Fatal & Injury Crashes per 1,000 Population
2009	72,430	14	4	308	71	0.19	0.06	4.25	0.98
2010	76,000	11	5	285	55	0.14	0.07	3.75	0.72
2011	76,580	11	4	403	83	0.14	0.05	5.26	1.08
2012	77,120	27	3	426	99	0.35	0.04	5.52	1.28
2013	77,985	11	5	422	101	0.14	0.06	5.41	1.30
2014	78,340	12	5	455	87	0.15	0.06	5.81	1.11
2015	79,155	11	6	463	87	0.14	0.08	5.85	1.10
2016	79,880	14	1	473	91	0.18	0.01	5.92	1.14
2017	80,500	5	1	442	78	0.06	0.01	5.49	0.97
2018	80,765	16	7	440	86	0.20	0.09	5.45	1.06

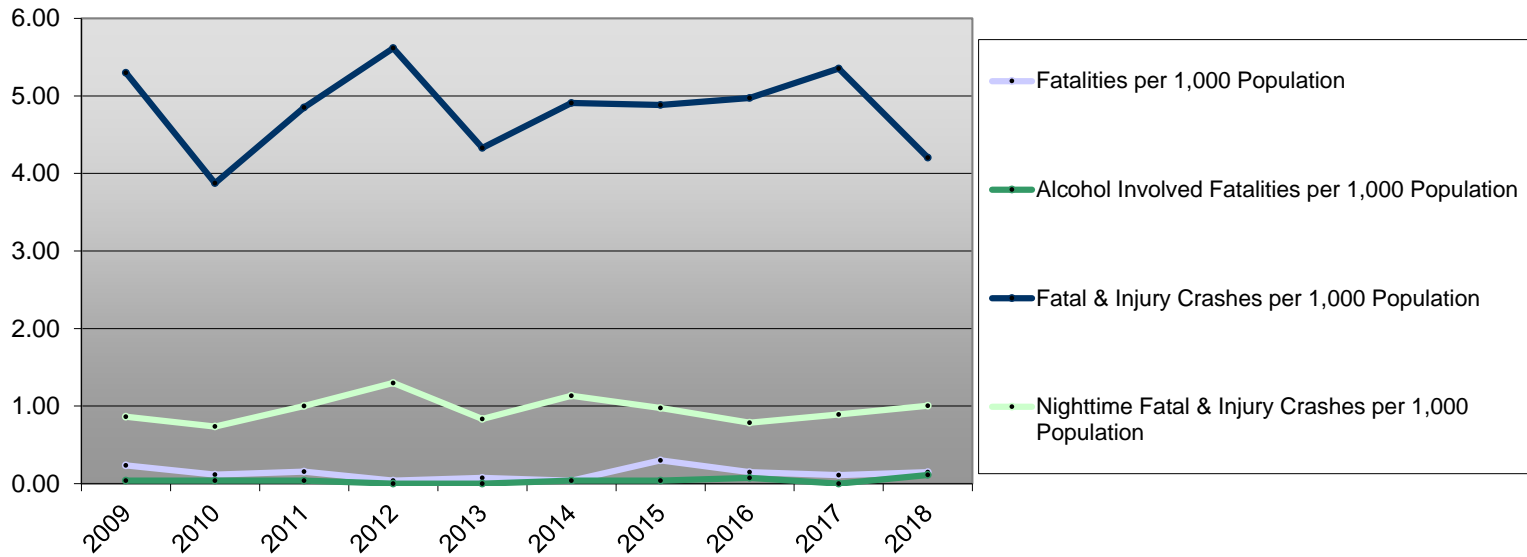
Umatilla County Fatal & Injury Crashes



Union County 10-Year Traffic Crash Data (2009-2018)

Year	Population	Fatalities	Alcohol Involved Fatalities	Fatal & Injury Crashes	Night time Fatal & Injury Crashes	Fatalities per 1,000 Population	Alcohol Involved Fatalities per 1,000 Population	Fatal & Injury Crashes per 1,000 Population	Nighttime Fatal & Injury Crashes per 1,000 Population
2009	25,470	6	1	135	22	0.24	0.04	5.30	0.86
2010	25,810	3	1	100	19	0.12	0.04	3.87	0.74
2011	25,980	4	1	126	26	0.15	0.04	4.85	1.00
2012	26,175	1	0	147	34	0.04	0.00	5.62	1.30
2013	26,325	2	0	114	22	0.08	0.00	4.33	0.84
2014	26,485	1	1	130	30	0.04	0.04	4.91	1.13
2015	26,625	8	1	130	26	0.30	0.04	4.88	0.98
2016	26,745	4	2	133	21	0.15	0.07	4.97	0.79
2017	26,900	3	0	144	24	0.11	0.00	5.35	0.89
2018	26,885	4	3	113	27	0.15	0.11	4.20	1.00

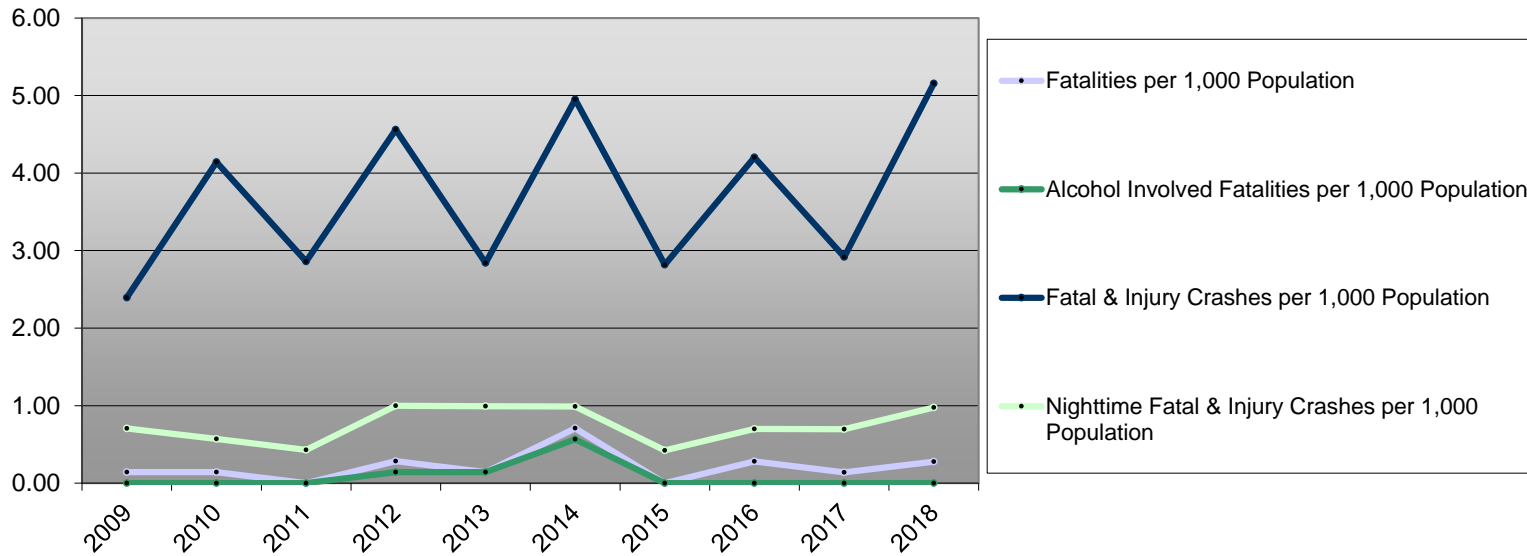
Union County Fatal & Injury Crashes



Wallowa County 10-Year Traffic Crash Data (2009-2018)

Year	Population	Fatalities	Alcohol Involved Fatalities	Fatal & Injury Crashes	Night time Fatal & Injury Crashes	Fatalities per 1,000 Population	Alcohol Involved Fatalities per 1,000 Population	Fatal & Injury Crashes per 1,000 Population	Nighttime Fatal & Injury Crashes per 1,000 Population
2009	7,100	1	0	17	5	0.14	0.00	2.39	0.70
2010	7,005	1	0	29	4	0.14	0.00	4.14	0.57
2011	6,995	0	0	20	3	0.00	0.00	2.86	0.43
2012	7,015	2	1	32	7	0.29	0.14	4.56	1.00
2013	7,045	1	1	20	7	0.14	0.14	2.84	0.99
2014	7,070	5	4	35	7	0.71	0.57	4.95	0.99
2015	7,100	0	0	20	3	0.00	0.00	2.82	0.42
2016	7,140	2	0	30	5	0.28	0.00	4.20	0.70
2017	7,195	1	0	21	5	0.14	0.00	2.92	0.69
2018	7,175	2	0	37	7	0.28	0.00	5.16	0.98

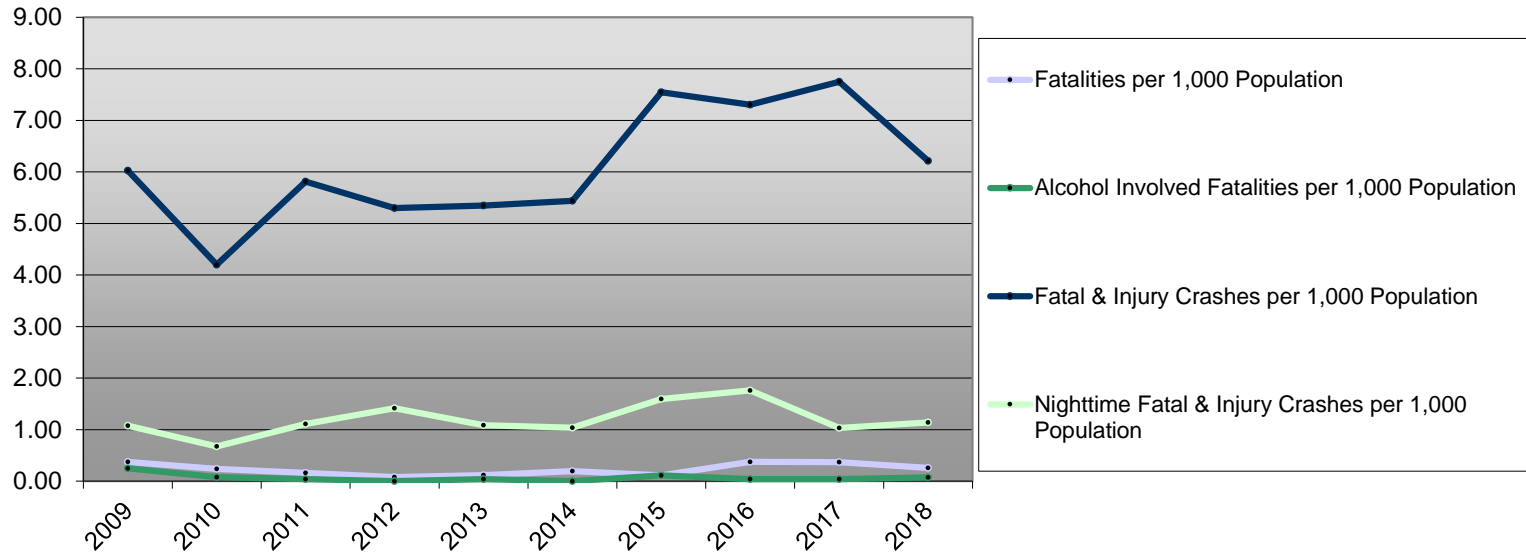
Wallowa County Fatal & Injury Crashes



Wasco County 10-Year Traffic Crash Data (2009-2018)

Year	Population	Fatalities	Alcohol Involved Fatalities	Fatal & Injury Crashes	Night time Fatal & Injury Crashes	Fatalities per 1,000 Population	Alcohol Involved Fatalities per 1,000 Population	Fatal & Injury Crashes per 1,000 Population	Nighttime Fatal & Injury Crashes per 1,000 Population
2009	24,230	9	6	146	26	0.37	0.25	6.03	1.07
2010	25,235	6	2	106	17	0.24	0.08	4.20	0.67
2011	25,300	4	1	147	28	0.16	0.04	5.81	1.11
2012	25,485	2	0	135	36	0.08	0.00	5.30	1.41
2013	25,810	3	1	138	28	0.12	0.04	5.35	1.08
2014	26,105	5	0	142	27	0.19	0.00	5.44	1.03
2015	26,370	3	3	199	42	0.11	0.11	7.55	1.59
2016	26,700	10	1	195	47	0.37	0.04	7.30	1.76
2017	27,100	10	1	210	28	0.37	0.04	7.75	1.03
2018	27,200	7	2	169	31	0.26	0.07	6.21	1.14

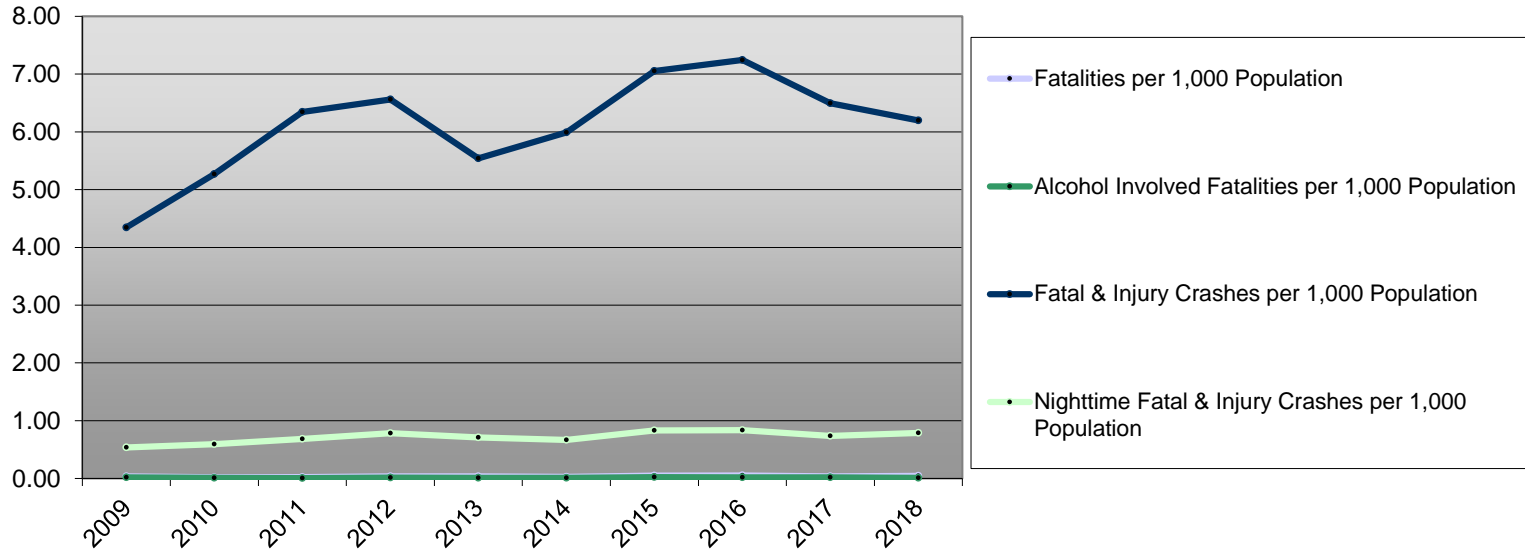
Wasco County Fatal & Injury Crashes



Washington County 10-Year Traffic Crash Data (2009-2018)

Year	Population	Fatalities	Alcohol Involved Fatalities	Fatal & Injury Crashes	Night time Fatal & Injury Crashes	Fatalities per 1,000 Population	Alcohol Involved Fatalities per 1,000 Population	Fatal & Injury Crashes per 1,000 Population	Nighttime Fatal & Injury Crashes per 1,000 Population
2009	527,140	20	11	2,291	283	0.04	0.02	4.35	0.54
2010	531,070	11	6	2,798	316	0.02	0.01	5.27	0.60
2011	536,370	13	3	3,403	368	0.02	0.01	6.34	0.69
2012	542,845	19	8	3,561	426	0.04	0.01	6.56	0.78
2013	550,990	21	6	3,052	391	0.04	0.01	5.54	0.71
2014	560,465	16	6	3,358	374	0.03	0.01	5.99	0.67
2015	570,510	28	13	4,023	475	0.05	0.02	7.05	0.83
2016	583,595	30	11	4,228	488	0.05	0.02	7.24	0.84
2017	595,860	21	11	3,871	439	0.04	0.02	6.50	0.74
2018	606,280	27	5	3,758	479	0.04	0.01	6.20	0.79

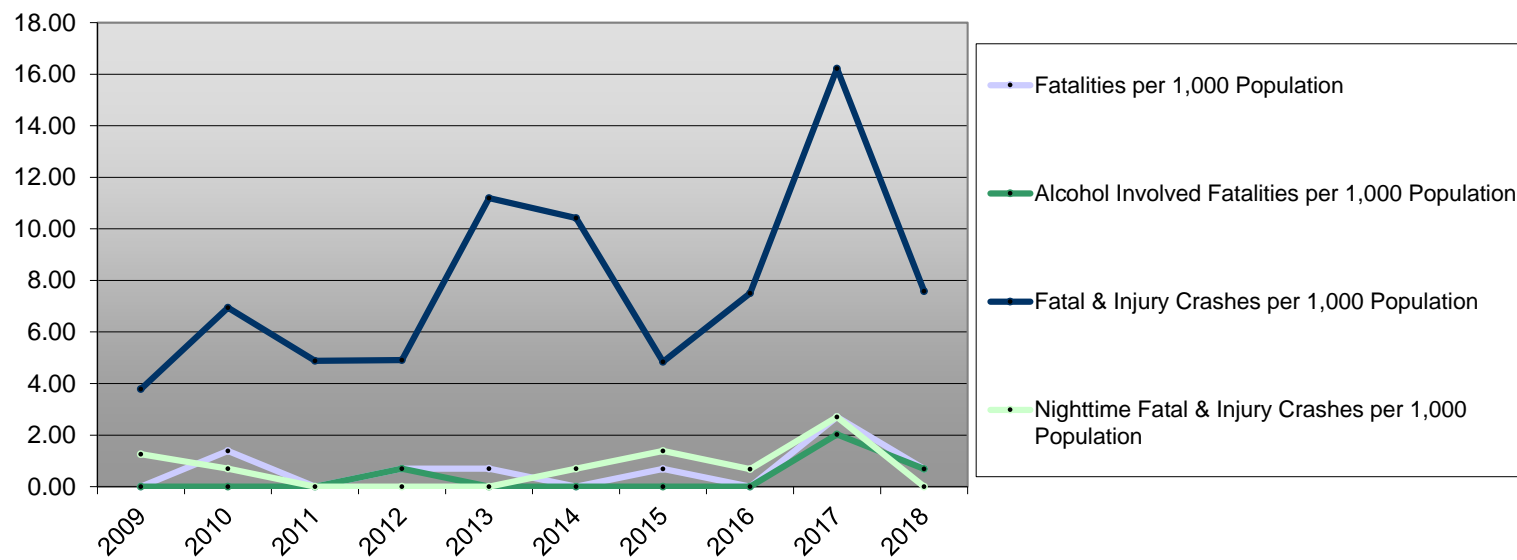
Washington County Fatal & Injury Crashes



Wheeler County 10-Year Traffic Crash Data (2009-2018)

Year	Population	Fatalities	Alcohol Involved Fatalities	Fatal & Injury Crashes	Night time Fatal & Injury Crashes	Fatalities per 1,000 Population	Alcohol Involved Fatalities per 1,000 Population	Fatal & Injury Crashes per 1,000 Population	Nighttime Fatal & Injury Crashes per 1,000 Population
2009	1,585	0	0	6	2	0.00	0.00	3.79	1.26
2010	1,440	2	0	10	1	1.39	0.00	6.94	0.69
2011	1,435	0	0	7	0	0.00	0.00	4.88	0.00
2012	1,425	1	1	7	0	0.70	0.70	4.91	0.00
2013	1,430	1	0	16	0	0.70	0.00	11.19	0.00
2014	1,440	0	0	15	1	0.00	0.00	10.42	0.69
2015	1,445	1	0	7	2	0.69	0.00	4.84	1.38
2016	1,465	0	0	11	1	0.00	0.00	7.51	0.68
2017	1,480	4	3	24	4	2.70	2.03	16.22	2.70
2018	1,450	1	1	11	0	0.69	0.69	7.59	0.00

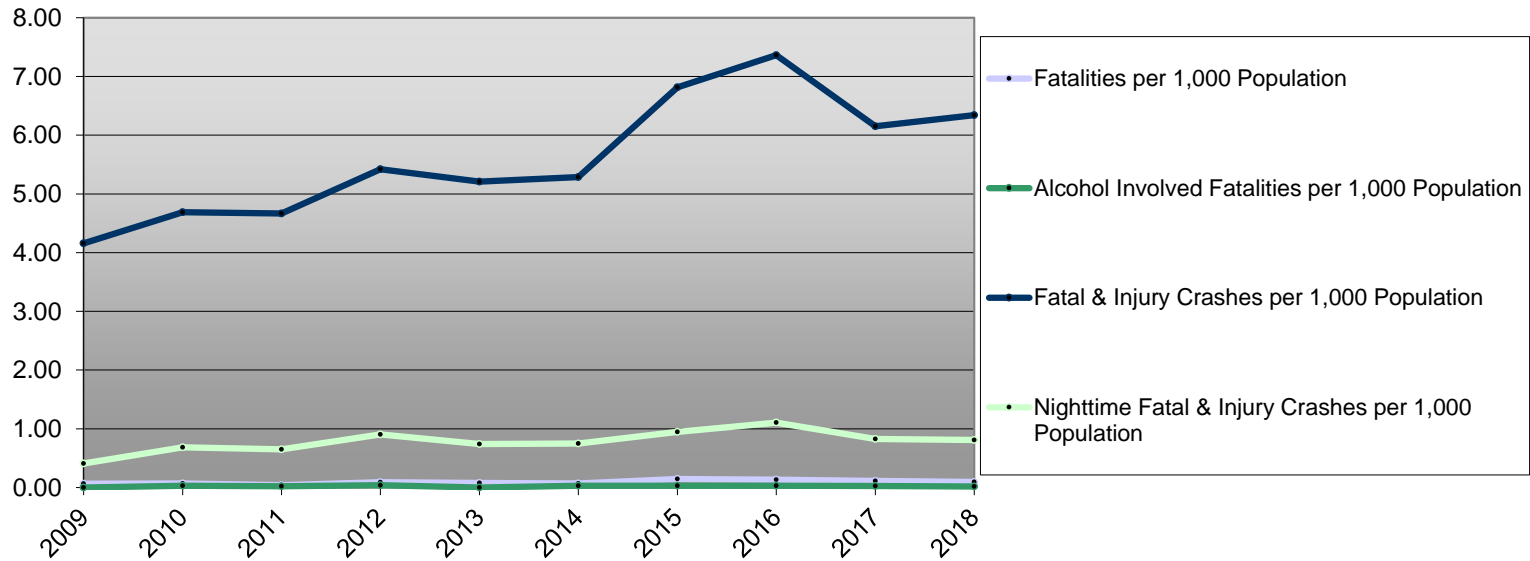
Wheeler County Fatal & Injury Crashes



Yamhill County 10-Year Traffic Crash Data (2009-2018)

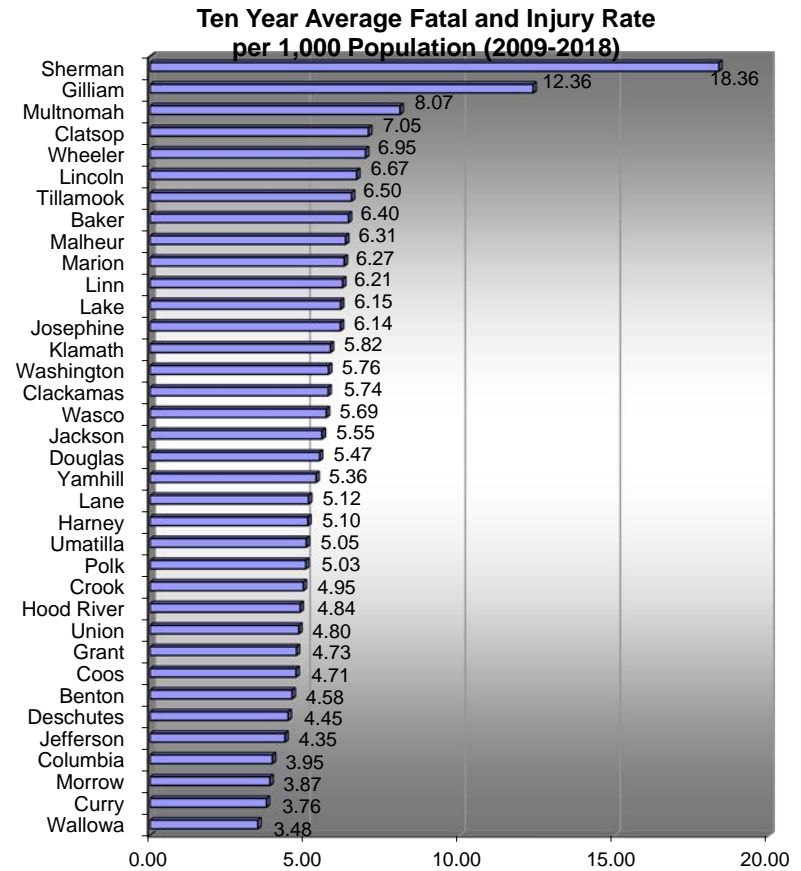
Year	Population	Fatalities	Alcohol Involved Fatalities	Fatal & Injury Crashes	Night time Fatal & Injury Crashes	Fatalities per 1,000 Population	Alcohol Involved Fatalities per 1,000 Population	Fatal & Injury Crashes per 1,000 Population	Nighttime Fatal & Injury Crashes per 1,000 Population
2009	95,250	6	0	396	39	0.06	0.00	4.16	0.41
2010	99,405	7	3	466	68	0.07	0.03	4.69	0.68
2011	99,850	4	2	466	65	0.04	0.02	4.67	0.65
2012	100,550	9	4	545	91	0.09	0.04	5.42	0.91
2013	101,400	8	0	528	75	0.08	0.00	5.21	0.74
2014	102,525	7	3	542	77	0.07	0.03	5.29	0.75
2015	103,630	15	3	706	98	0.14	0.03	6.81	0.95
2016	104,990	14	3	773	116	0.13	0.03	7.36	1.10
2017	106,300	12	3	654	88	0.11	0.03	6.15	0.83
2018	107,415	10	2	681	87	0.09	0.02	6.34	0.81

Yamhill County Fatal & Injury Crashes



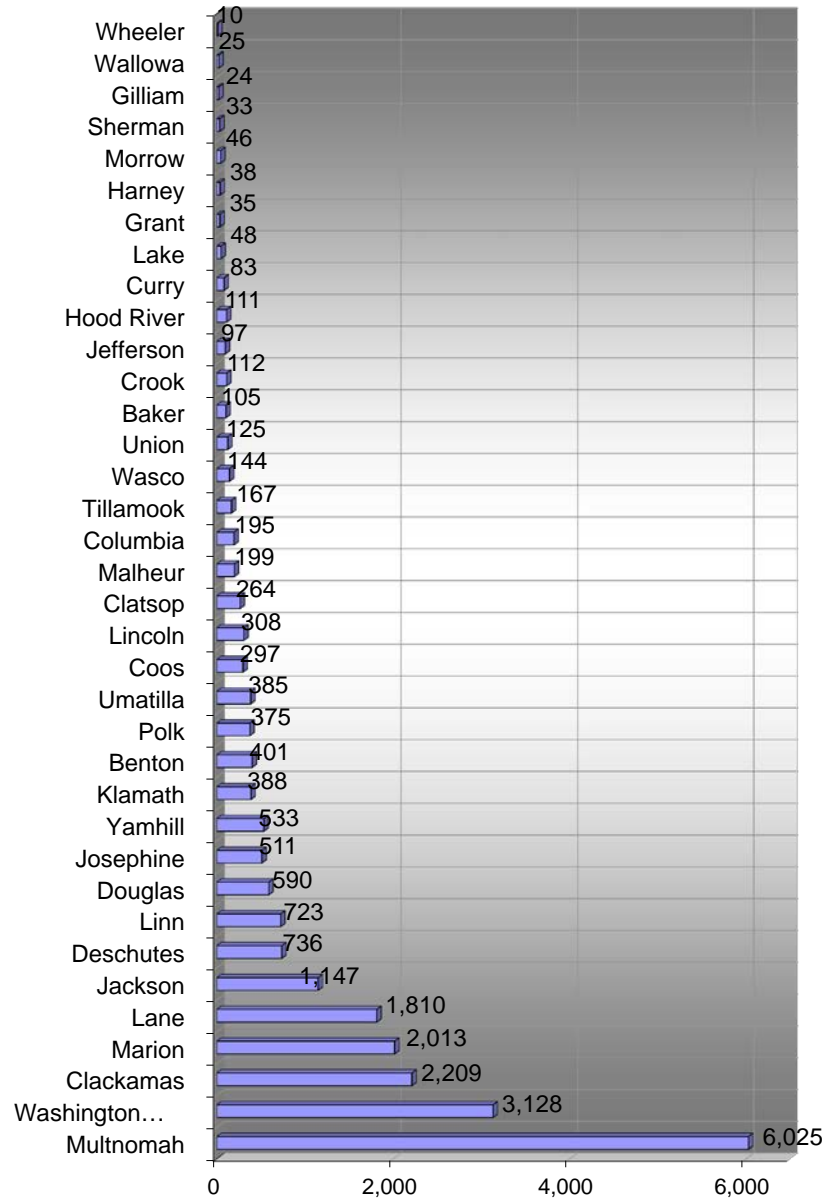
10-Year Averages by County (2009-2018)

County	10 Year Average Fatal & Injury Crashes	10 Year Population Average	Ten Year Average F&I Rate
Wallowa	25	7,072	3.48
Curry	83	22,104	3.76
Morrow	46	11,743	3.87
Columbia	195	49,410	3.95
Jefferson	97	22,221	4.35
Deschutes	736	165,175	4.45
Benton	401	87,445	4.58
Coos	297	63,015	4.71
Grant	35	7,470	4.73
Union	125	26,023	4.80
Hood River	111	22,871	4.84
Crook	112	22,658	4.95
Polk	375	74,571	5.03
Umatilla	385	76,212	5.05
Harney	38	7,438	5.10
Lane	1,810	353,910	5.12
Yamhill	533	99,501	5.36
Douglas	590	107,753	5.47
Jackson	1,147	206,597	5.55
Wasco	144	25,353	5.69
Clackamas	2,209	384,569	5.74
Washington	3,128	543,399	5.76
Klamath	388	66,641	5.82
Josephine	511	83,203	6.14
Lake	48	7,840	6.15
Linn	723	116,413	6.21
Marion	2,013	321,140	6.27
Malheur	199	31,530	6.31
Baker	105	16,349	6.40
Tillamook	167	25,632	6.50
Lincoln	308	46,104	6.67
Wheeler	10	1,481	6.95
Clatsop	264	37,512	7.05
Multnomah	6,025	747,021	8.07
Gilliam	24	1,918	12.36
Sherman	33	1,798	18.36



10-Year Average Fatal & Injury Crashes by County (2009-2018)

County	10 Year Average F&I Crashes
Multnomah	6,025
Washington	3,128
Clackamas	2,209
Marion	2,013
Lane	1,810
Jackson	1,147
Deschutes	736
Linn	723
Douglas	590
Josephine	511
Yamhill	533
Klamath	388
Benton	401
Polk	375
Umatilla	385
Coos	297
Lincoln	308
Clatsop	264
Malheur	199
Columbia	195
Tillamook	167
Wasco	144
Union	125
Baker	105
Crook	112
Jefferson	97
Hood River	111
Curry	83
Lake	48
Grant	35
Harney	38
Morrow	46
Sherman	33
Gilliam	24
Wallowa	25
Wheeler	10



10-Year Total Fatal & Injury Crashes by County (2009-2018)

County	10 Year Total F&I Crashes
Multnomah	60,251
Washington	31,281
Clackamas	22,087
Marion	20,128
Lane	18,104
Jackson	11,470
Deschutes	7,358
Linn	7,232
Douglas	5,899
Josephine	5,112
Yamhill	5,333
Klamath	3,878
Benton	4,006
Polk	3,748
Umatilla	3,845
Coos	2,968
Lincoln	3,075
Clatsop	2,644
Malheur	1,990
Columbia	1,953
Tillamook	1,666
Wasco	1,442
Union	1,250
Baker	1,047
Crook	1,121
Jefferson	967
Hood River	1,108
Curry	831
Lake	482
Grant	353
Harney	379
Morrow	455
Sherman	330
Gilliam	237
Wallowa	246
Wheeler	103

County	10 Year Total F&I Crashes
All Others	12,017
Multnomah	60,251
Washington	31,281
Clackamas	22,087
Marion	20,128
Lane	18,104
Jackson	11,470
Deschutes	7,358
Linn	7,232
Douglas	5,899
Josephine	5,112
Yamhill	5,333
Klamath	3,878
Benton	4,006
Polk	3,748
Umatilla	3,845
Coos	2,968
Lincoln	3,075
Clatsop	2,644
Malheur	1,990
Columbia	1,953

