

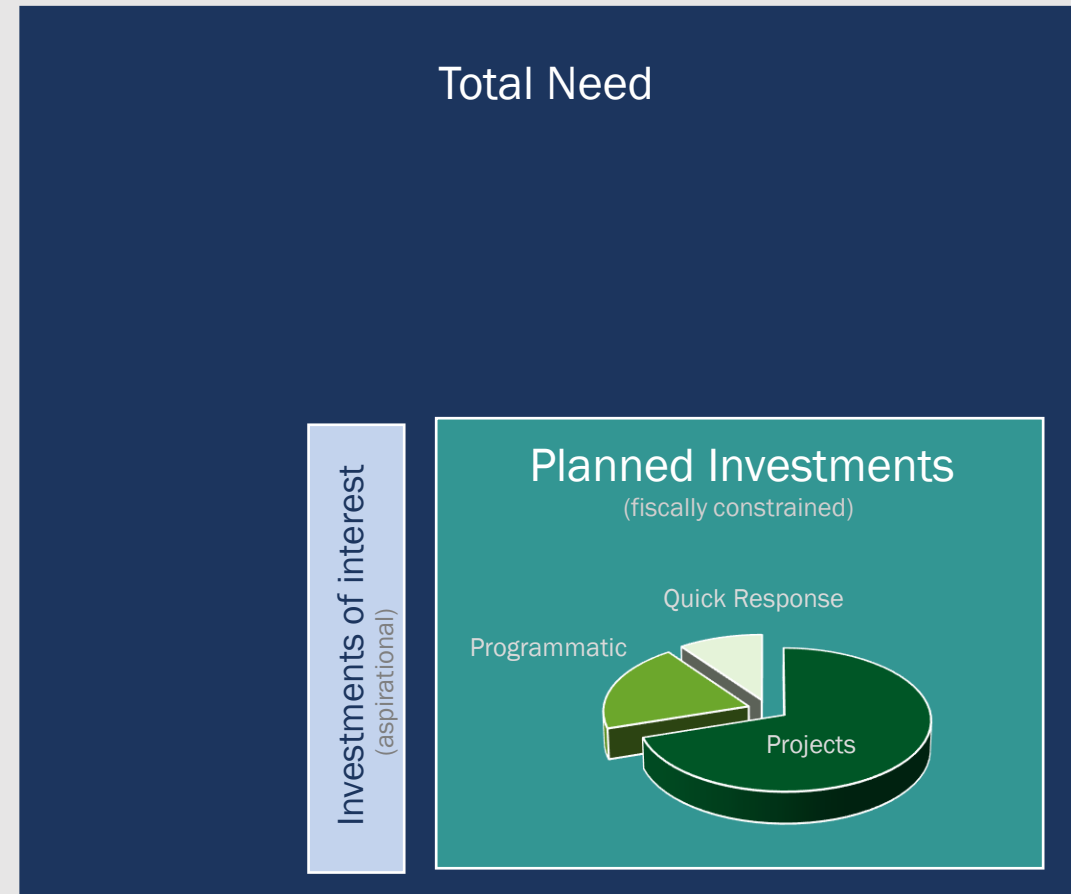


# **Capital Investment Plan**

**Amanda Pietz, Policy Data and Analysis Division Administrator**

**April 2025**

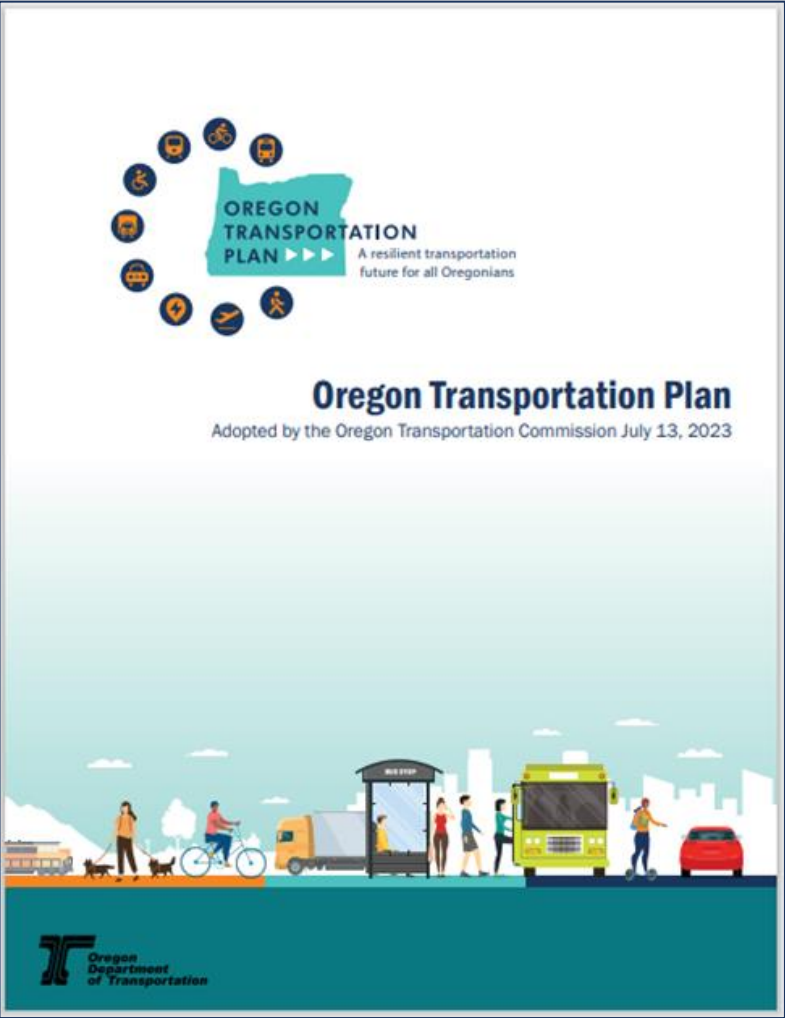
# What is the Capital Investment Plan?



- **Projects:** Preservation, enhance, bike-ped, etc.
- **Programmatic / Lump Sum:** O&M, transit, safety, etc.
- **Quick Response:** Safety, emergency management, etc.



# Benefit: Creates accountability between long range plans and short-term investments

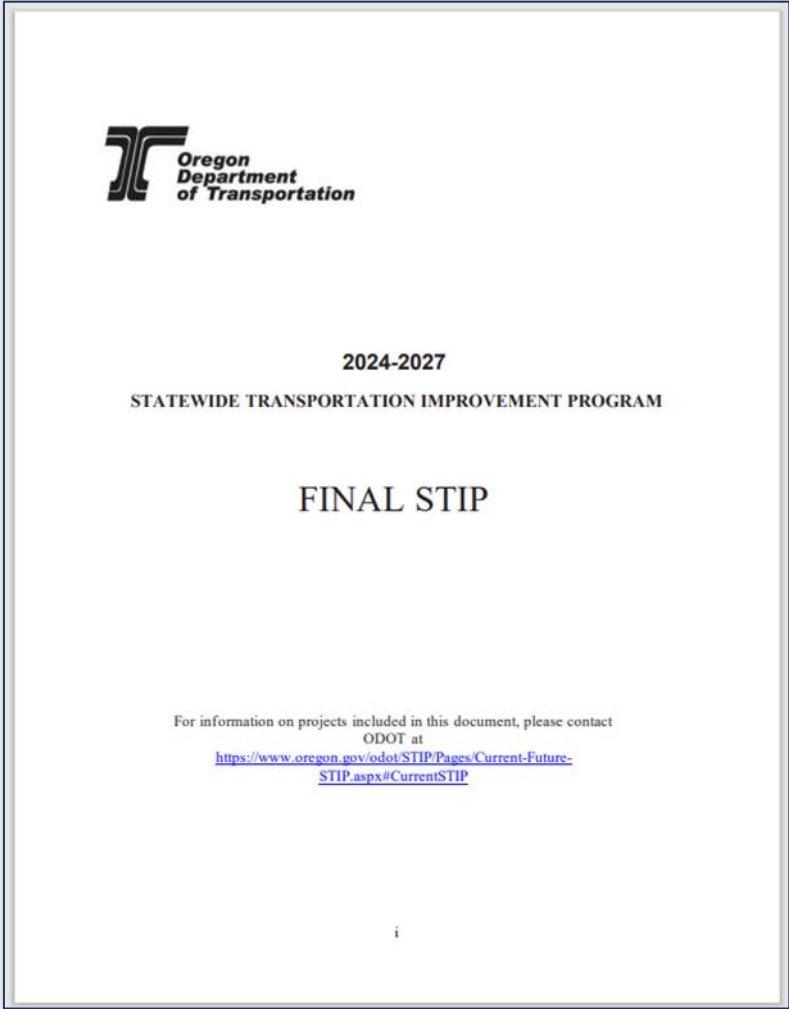


2023-2050

Capital Investment  
Plan

➔

Ensure investment decisions help advance long term vision and goals. Creates a mid-range investment plan.

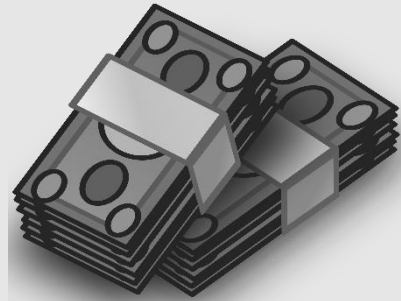


2024-2027

# Benefit: Helps us understand the long-term impacts of short-term decisions

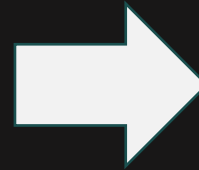


Borrow to build today

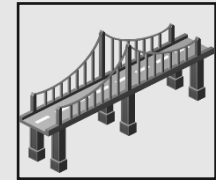
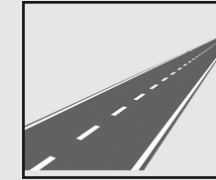
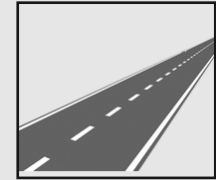


Payback over time

Capital Investment  
Plan

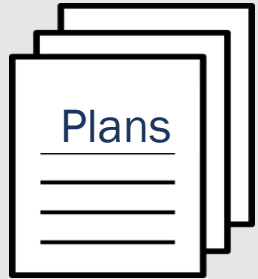


Understand  
the impacts to  
real  
investments  
over time and  
make more  
informed  
choices



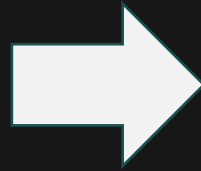
# Benefit: Transitions to a more disciplined project selection process

Investment concepts  
originate from:



ACTs

## Goals and Metrics



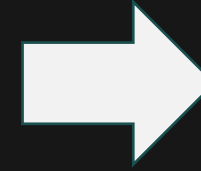
Use a data-driven process to screen investment ideas through goals and metrics.

## Capital Investment Plan

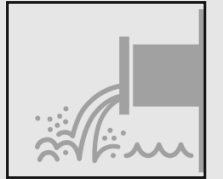
### Harmonization

- Balance investments
  - Type
  - Urban and Rural
- Consider cost responsibility
- Meet obligation targets
- Combine projects
- Evaluate risk and ROI

## Projects



Iterate to a final project list and investment portfolio.



# Benefit: Improved Project Estimates

## Capital Investment Plan

Confidence in programming based on understood risks, project readiness, and confirmation of available funding.

Move from a three-year STIP update to an annual update, incorporating more current information.

Do more project phasing, with PE then construction.

Identified projects are bucketed to timeframes based on urgency, readiness, level of understanding of risk, and available funding



Reassessed annually and more investments added to the CIP and projects to the STIP



Investment identified for meeting longer term need. Commitment for project to be further developed.

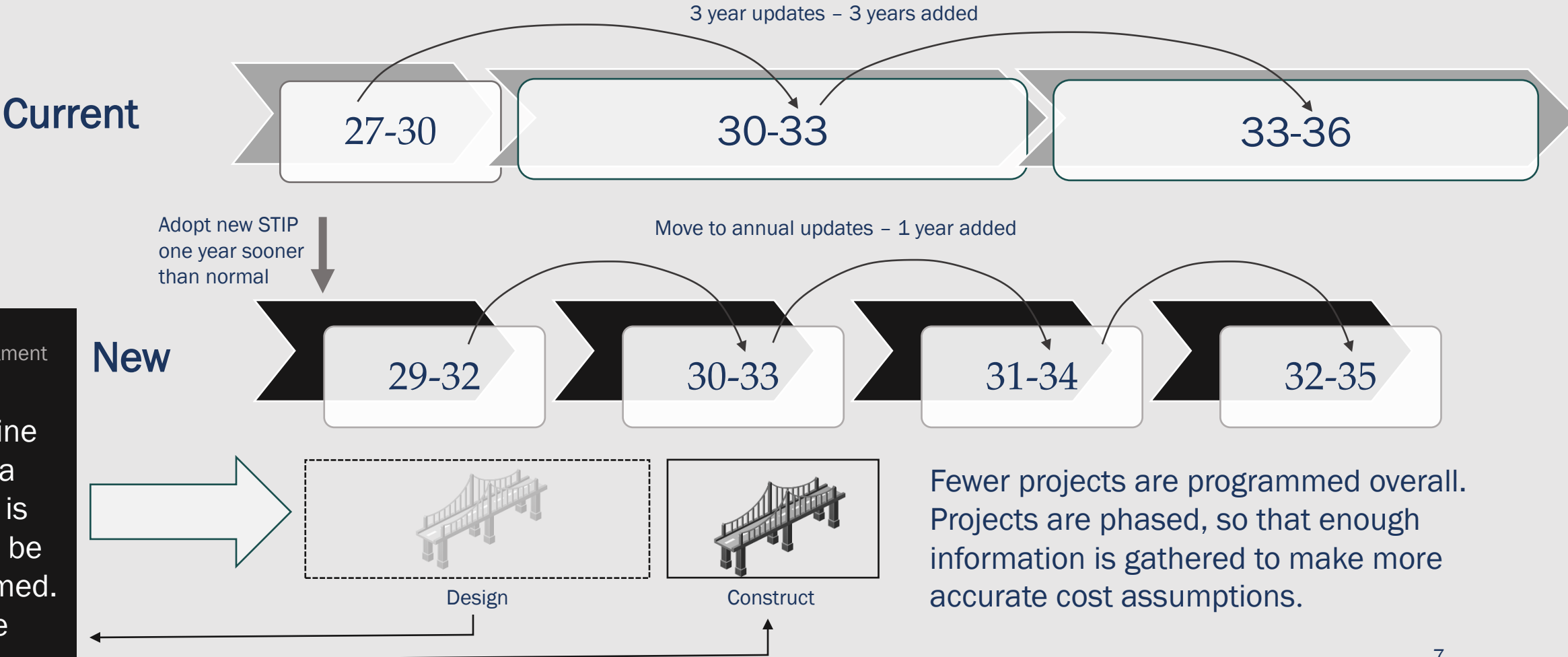


More eminent need, with clear project concept and high-level scoping work complete. Further development for programming.

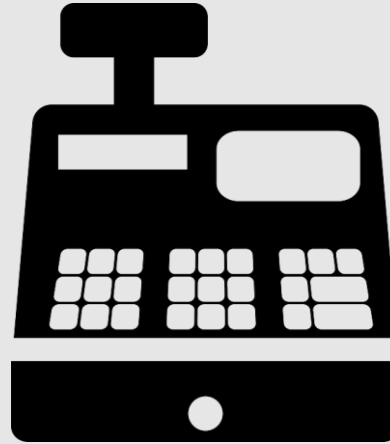


Immediate need, project is ready and anticipated risks are known, funding is available. Project programmed in the STIP.

# Transitioning to an Annual STIP and Different Programming Approach



## Benefit: Increased Transparency and Accountability



### Capital Investment Plan

- ACT and Stakeholder informed
- OTC approved
- Public list
- Public accounting
- Longer-term assurances
- Metrics and measures
- Transparent process



# Inform Goal Prioritization



## Economic and Community Vitality

Improve prosperity, opportunity, and livability for all people who live, work, and recreate in Oregon.



## Social Equity

Improve access to safe and affordable transportation for all, recognizing people who have been systemically excluded and underserved. Create an equitable and transparent engagement decision-making structure that builds public trust.



## Mobility

Create a resilient multimodal transportation system that enables diverse community members and businesses to get where they need to go safely, reliably, affordably, and with minimal environmental impact.



## Stewardship of Public Resources

Secure sufficient and reliable revenue for transportation funding and invest public resources to achieve a resilient and sustainable multimodal transportation system in a state of good repair.



## Safety

Enable safe travel for all people, regardless of age, ability, race, income, or mode of transportation.



## Sustainability and Climate Action

Minimize transportation's negative role in climate change by reducing GHG emissions, reducing air toxics, noise and light pollution, water toxics, and habitat loss.

Oregon Transportation Plan goals

What are your priorities and what should we consider when evaluating projects for inclusion in the Capital Investment Plan?

# Next Steps

- Prioritize Goals (every 3-5 years)
  - Seek input from ACTs and public
  - OTC set priorities among the OTP goals
- Establish Metrics and Scoring
  - Look to work of other states
  - Consider: available funding, performance targets, asset data and more
- Link to 2027-2030 STIP
- Develop first Capital Investment Plan
  - Use goals and priorities to identify investment ideas
  - Screen investment ideas through metrics and score
  - Harmonize
    - Seek input from ACTs to understand potential issues and opportunities
  - Finalize investment list and identify general timing over 10-year period
    - OTC approves Capital Investment Plan

## Example: OneNevada Goals and Criteria

Goal Area	Criteria
 <b>Enhance Safety</b>	Crash Reduction Potential
 <b>Preserve Infrastructure</b>	Pavement Condition Improvement Bridge Risk Reduction Score Other Asset Improvement
 <b>Optimize Mobility</b>	Population Accessibility Travel Time Reliability
 <b>Transform Economies</b>	Business Accessibility Economic Development Potential
 <b>Foster Sustainability</b>	Reduce Environmental Risk GHG Emission Reductions Environmental Enhancements Resilience Reduce Future Maintenance
 <b>Connect Communities</b>	Project Connectivity Multimodal Access Access to Community Destinations Equity



Questions?

