

Photo: OR 140 @ Foothill/Atlantic, ODOT



Update on Roundabouts on the State Highway System in Oregon

Kevin Haas, P.E.
State Traffic Standards Engineer
Oregon Department of
Transportation (ODOT)

Oregon Transportation Safety Committee
November 12, 2025



Today's roadmap...

- Update on recent state highway roundabout projects
- Safety performance of roundabouts vs. traffic signals
- Public outreach and engagement



Photo: US 101 @ OR 202 in Astoria, ODOT

1999—Oregon's first modern roundabout is built

Century Drive @ Colorado Avenue in Bend



Photo: Colorado Ave @ Century Dr in Bend, Google



2002—Oregon's first multilane roundabout is built

US 101 @ OR 202 in Astoria



Photos: ODOT



Progress on state highway roundabouts stalled until a tragic fatal crash occurred in 2014



Fatal crash—OR 47 at Verboort Rd intersection

Source: KPTV News—April 7, 2014



Portland teens killed in Oregon 47 crash near Forest Grove were Pacific University students



Source:
The Oregonian/OregonLive
April 7, 2014

ODOT will push for roundabout at Oregon 47 and Verboort Road near Forest Grove, spokesperson says



Source:

The Oregonian/OregonLive

April 8, 2014

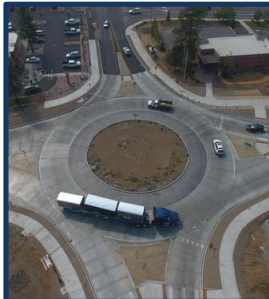
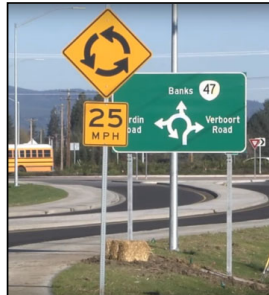


2016—First state highway roundabout since Astoria

OR 47 @ Verboort / Purdin Rd north of Forest Grove



Progress on state highway roundabouts in the last decade



2016

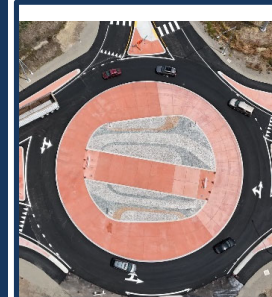
2017

2018

2020

2023

2025



2020—First state highway roundabout in SW Oregon

OR 140 @ Foothill/Atlantic north of Medford



2023—First state highway compact roundabout

OR 238 @ Cheshire Way/Rogue X in Medford



Photo: OR 238 @ Cheshire in Medford, Google



2023—First state highway roundabout corridor

4 multilane roundabouts constructed on US 20 along 3 mile corridor from Tumalo to Bend (Cook Ave, Old Bend-Redmond Highway, Cooley Rd, Robal Rd)



Photo: US 20 in Bend, ODOT



2023—First roundabout at freeway interchange

I-205 Northbound ramp at OR 43 in West Linn



Video: I-205 at OR 43 in West Linn, ODOT



2025—First state highway roundabout in Polk County

OR 99W @ Clow Corner completed and open to traffic

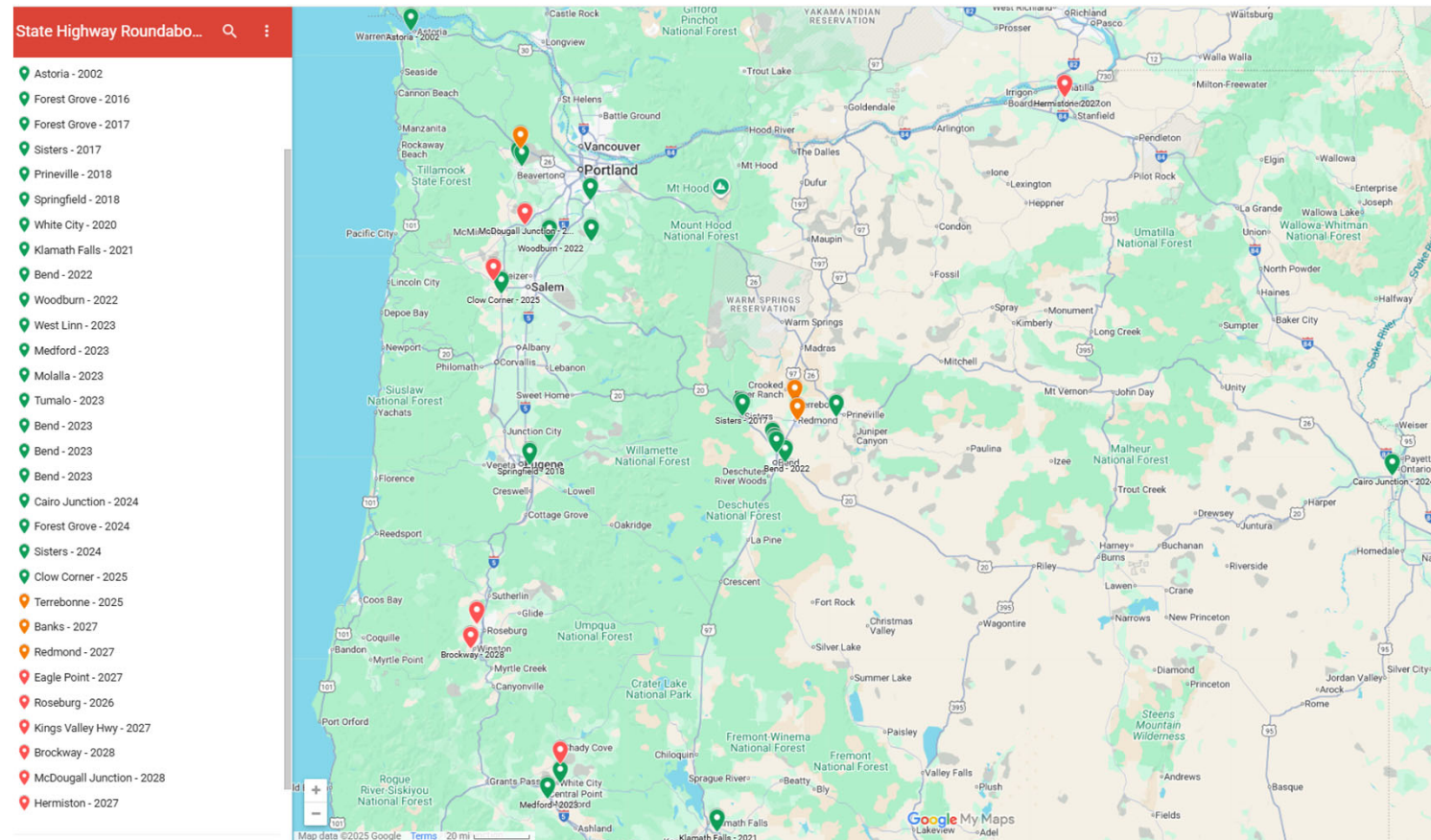


Photo: OR 99W @ Clow Corner, ODOT



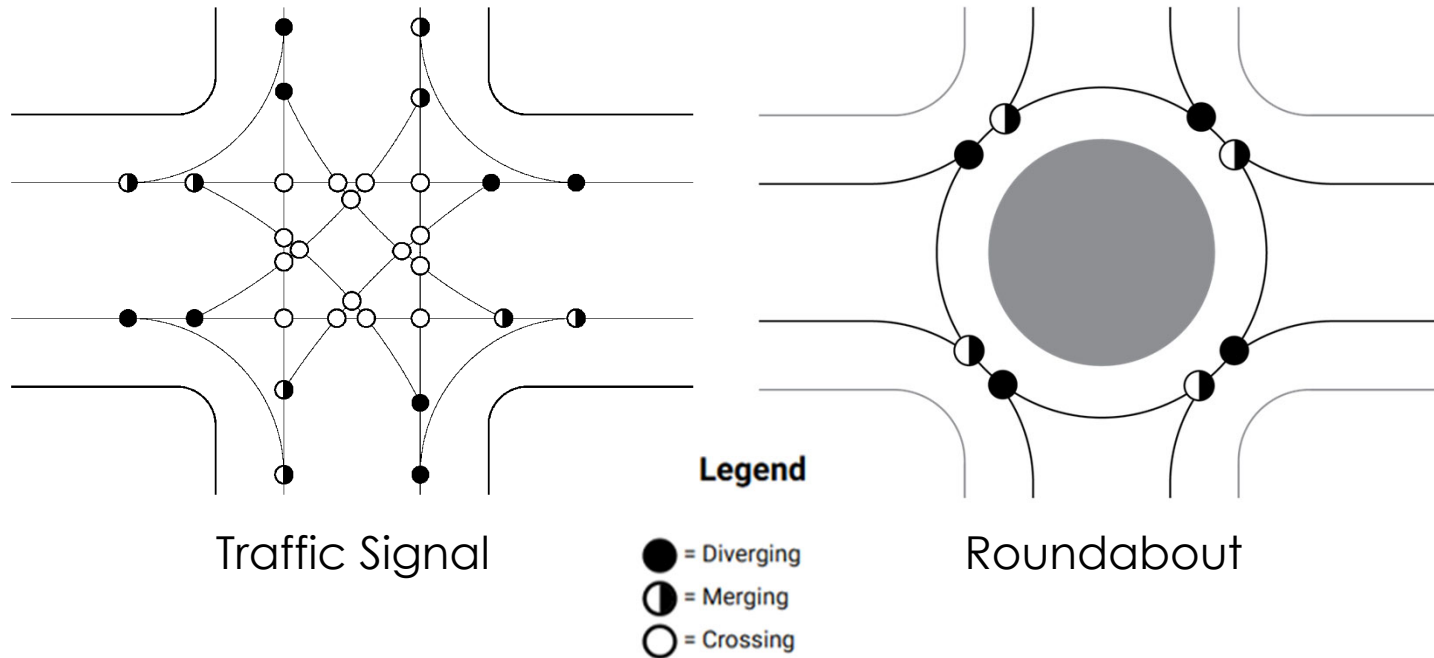
State Highway Roundabouts in Oregon

21 locations open to traffic with 9 more locations currently in construction or design

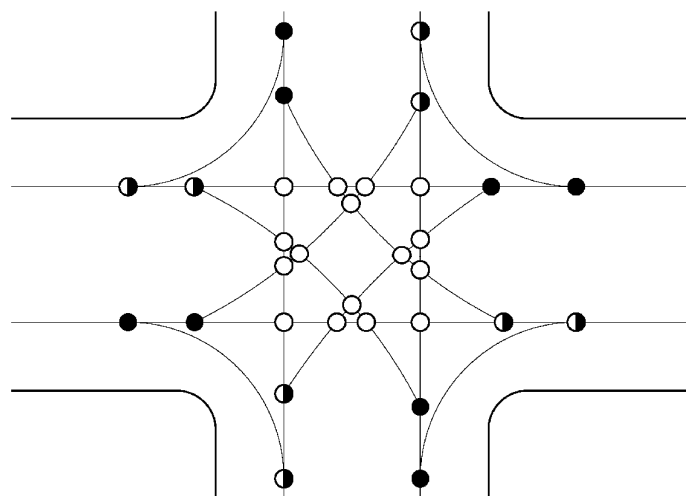




How do you improve safety at an intersection? It's all about conflict points



Traffic Signal—32 conflict points



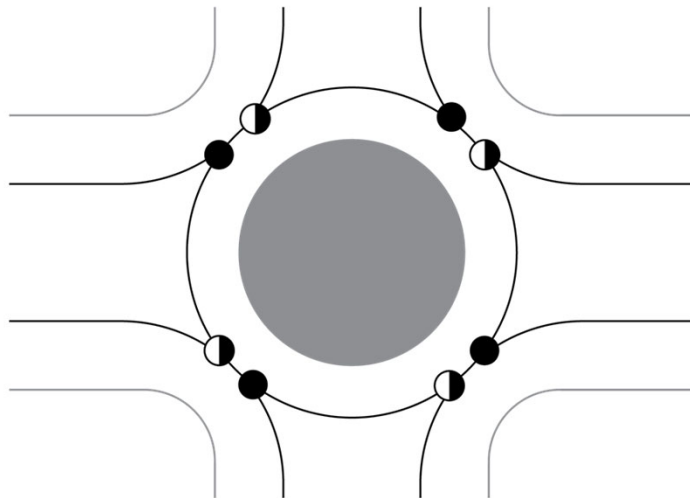
Legend

- = Diverging
- ◐ = Merging
- = Crossing

Conflict Type	Count
Crossing	16
Merging	8
Diverging	8
Total:	
32 Conflicts	



Roundabout—8 conflict points



Legend

- = Diverging
- ◐ = Merging
- = Crossing

Conflict Type	Count
Crossing	0
Merging	4
Diverging	4
Total:	
8 Conflicts	



Addressing myths vs. reality

Data Driven Safety Analysis (DDSA)

- On average 50% of all crashes at traffic signals in Oregon are injury or fatal crashes



Photo: ODOT



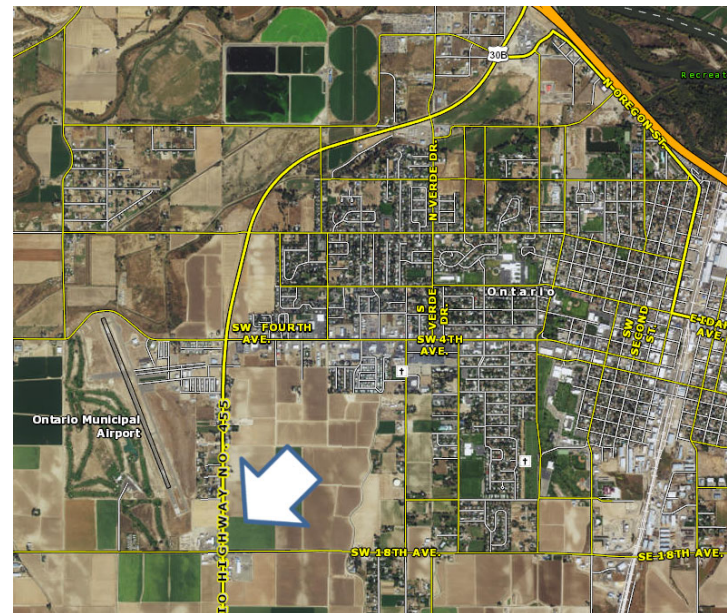
22



23

OR 201 @ SW 18th Ave west of Ontario prior to traffic signal installation

- 1993-2002
 - 10 crashes
 - 7 injury crashes
 - 3 property damage crashes
- 2003
 - Signal installed by ODOT

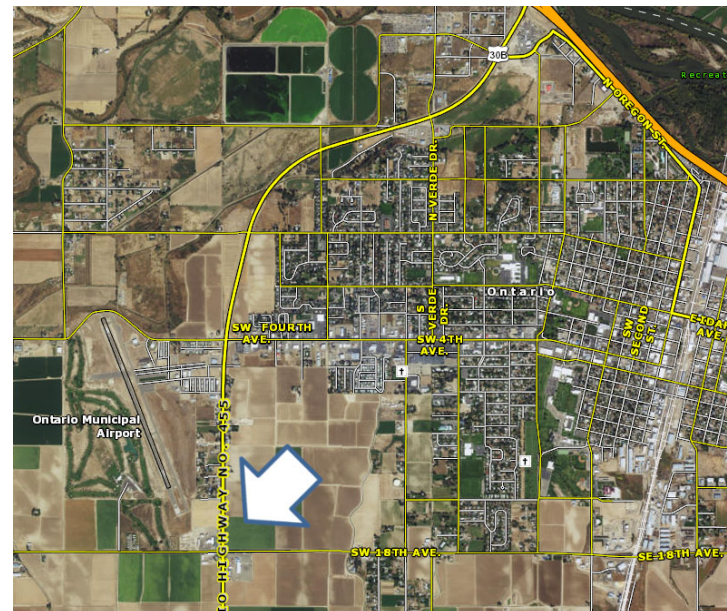




25

OR 201 @ SW 18th Ave west of Ontario most recent 10 year crash history

- 2011-2020
 - 20 crashes
 - 1 fatal crash in 2013
 - 10 injury crashes
 - 9 property damage crashes



Improving safety at Cairo Junction west of Ontario

ODOT photo of US-20 / US-26 / OR-201 intersection in January 2022



What are the ongoing challenges?

Moving modern roundabouts forward on both state highways & local roads in Oregon



Freight industry &
agricultural
concerns about
accommodating
oversize loads

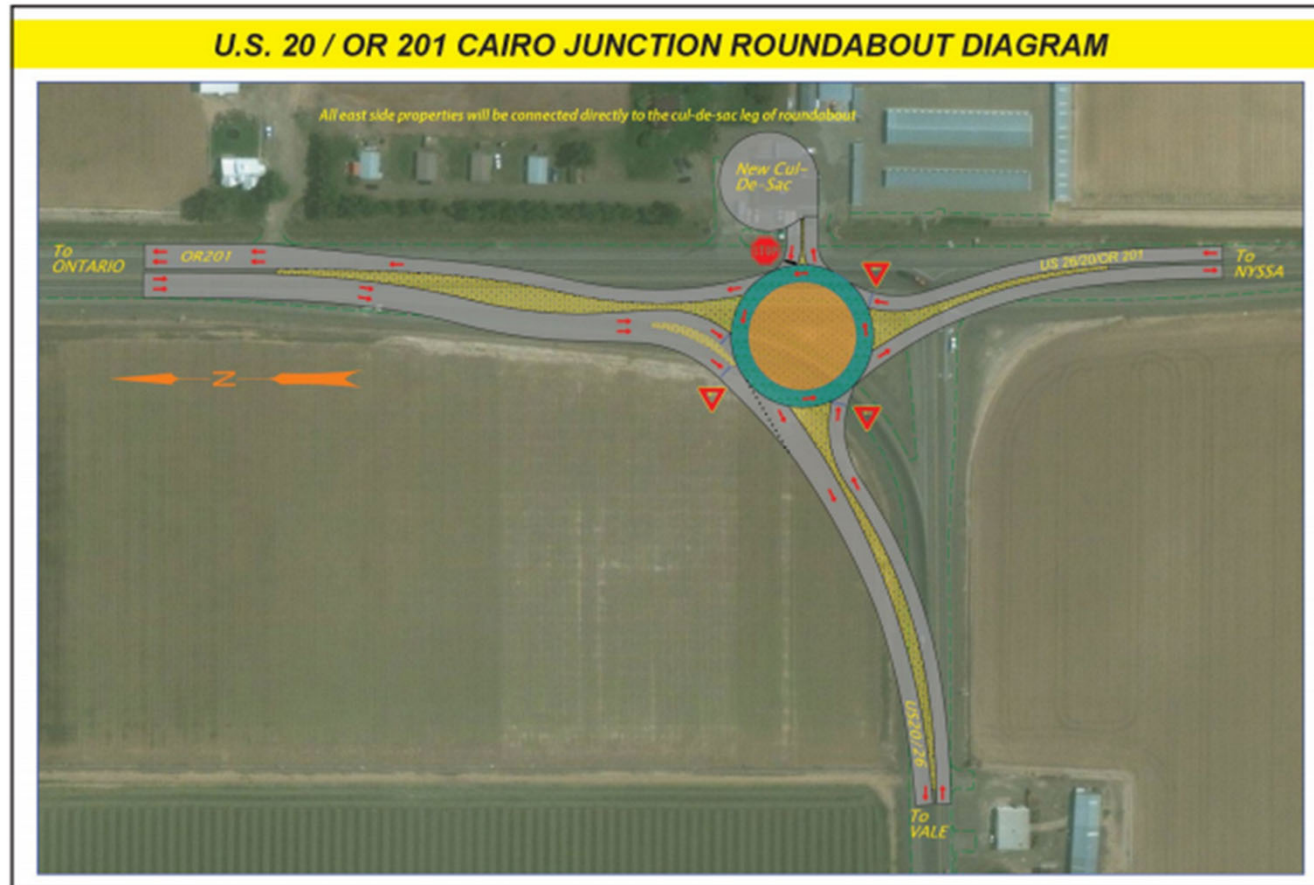


Communicating the
benefits of
roundabouts to a
skeptical public &
elected officials



Engaging the local community

Partnering between ODOT, local community, agricultural/freight stakeholders



Engaging the freight & agricultural communities

ODOT video of Cairo Junction roundabout in operation—July 2024



Engaging the local community

What does it look like today in 2025? Go look for yourself on Google Maps!

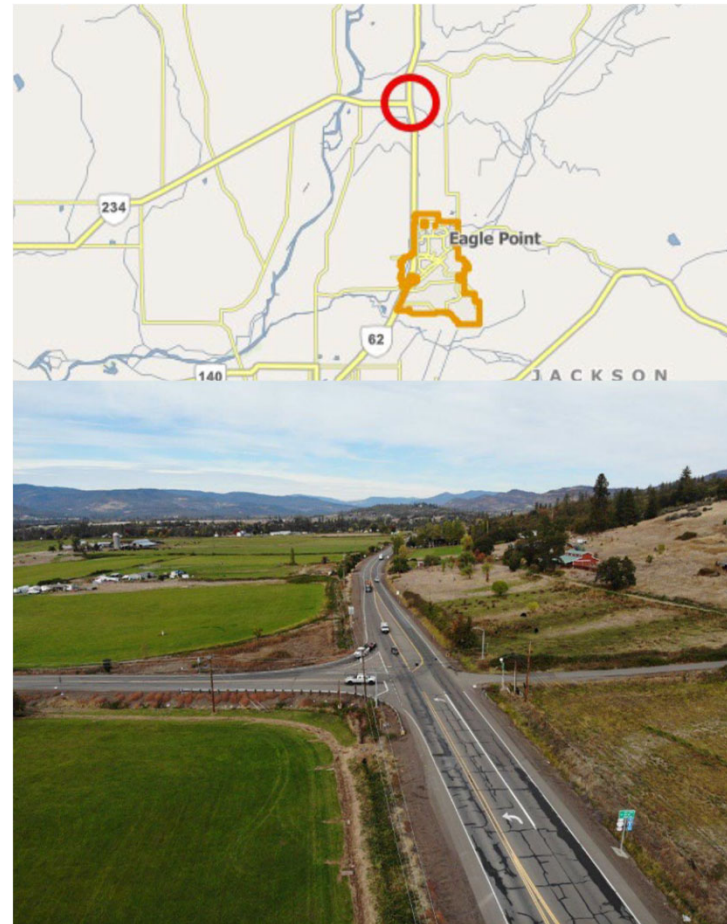




32

OR 62 @ OR 234 Roundabout Project

- Intersection is in the top 10% of all state highway crash locations in SW Oregon
- Safety projects must reduce crashes and severity to qualify for use of federal funds
- Estimated construction start in Fall 2027
- Estimated cost approximately \$8.2 million





OR 62 at OR 234 Roundabout Open House - July 30, 2025

by OregonDOT

10 photos • 31 views



35



36



Photo: OR 140 @ Foothill, Jackson County

Questions?

Kevin Haas, P.E.

State Traffic Standards Engineer

Oregon Department of
Transportation (ODOT)

Email: kevin.j.haas@odot.oregon.gov

Phone: (503) 986-3583

Oregon Transportation Safety Committee

November 12, 2025

