



# PEDALCYCLIST FATALITIES ANALYSIS

---

Sept 2025

Data Source: ODOT's Crash Data System

Data Methods: ODOT follows ANSI D16 for the classification of motor vehicle crashes

**Note:** Low sample sizes in statistics increases variability and may provide a misleading trend. A longer timeframe - for example 10 years instead of five - increases the number of data points, helping to smooth out anomalies, revealing a more accurate and stable view of long-term trends, which supports better decision-making and planning.

---

# OTSC: Why such a large increase in preliminary Pedalcyclist Fatalities in 2025?

ODOT CAR Unit - Initial Reported Motor Vehicle Traffic Fatalities - Year-to-Date: 2024						
Updated September 22, 2025 – Initial information, subject to change						
Month	Pedalcyclists	Pedestrians	Motorcyclists	Motor Vehicles	Total Fatalities (total of previous columns)	CMV Related (out of total fatalities)
January	1	8	1	29	39	14
February	2	9	3	27	41	4
March	1	4	4	25	34	7
April		8	6	20	34	3
May		5	12	18	35	1
June		7	15	28	50	4
July		7	12	49	68	6
August		10	8	32	50	6
September	2	5	6	21	34	4
October	5	9	11	28	53	7
November	1	9	5	37	52	6
December		15	3	27	45	13
Totals	12	96	86	341	535	75

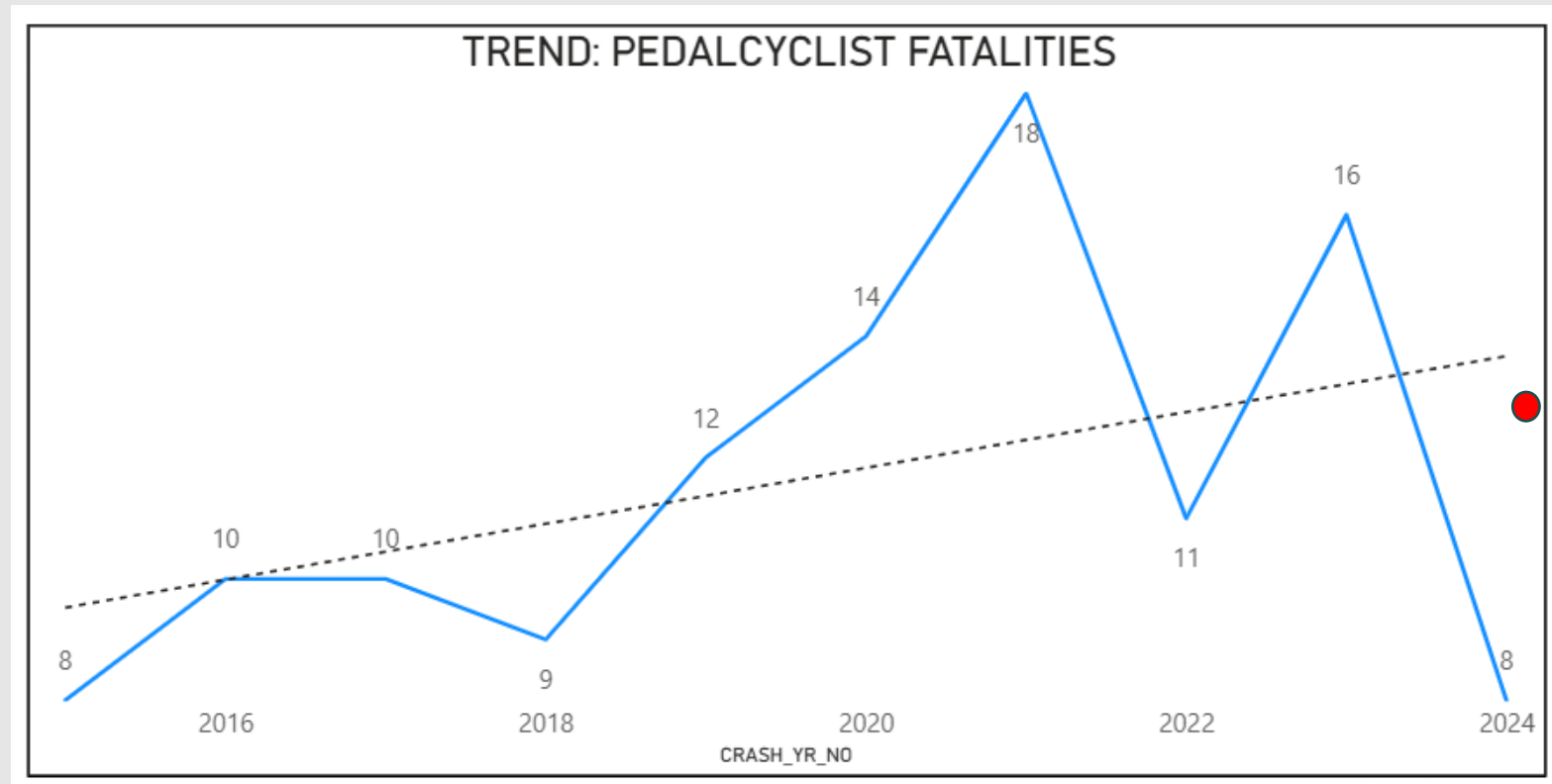
YTD (Jan-Aug) for 2024 was 4

ODOT CAR Unit - Initial Reported Motor Vehicle Traffic Fatalities - Year-to-Date: 2025						
Updated September 18, 2025 – Initial information, subject to change						
Month	Pedalcyclists	Pedestrians	Motorcyclists	Motor Vehicles	Total Fatalities (total of previous columns)	CMV Related (out of total fatalities)
January	1	9		19	29	5
February		12	3	20	35	5
March	2	7	2	24	35	4
April	1	5	4	28	38	6
May	1	4	10	23	38	4
June	2	3	10	35	50	8
July	3	8	2	24	37	7
August	2	13	11	26	52	4
September		5	5	9	19	3
October						
November						
December						
Totals	12	66	47	208	333	46

YTD (Jan-Aug) for 2025 was 12

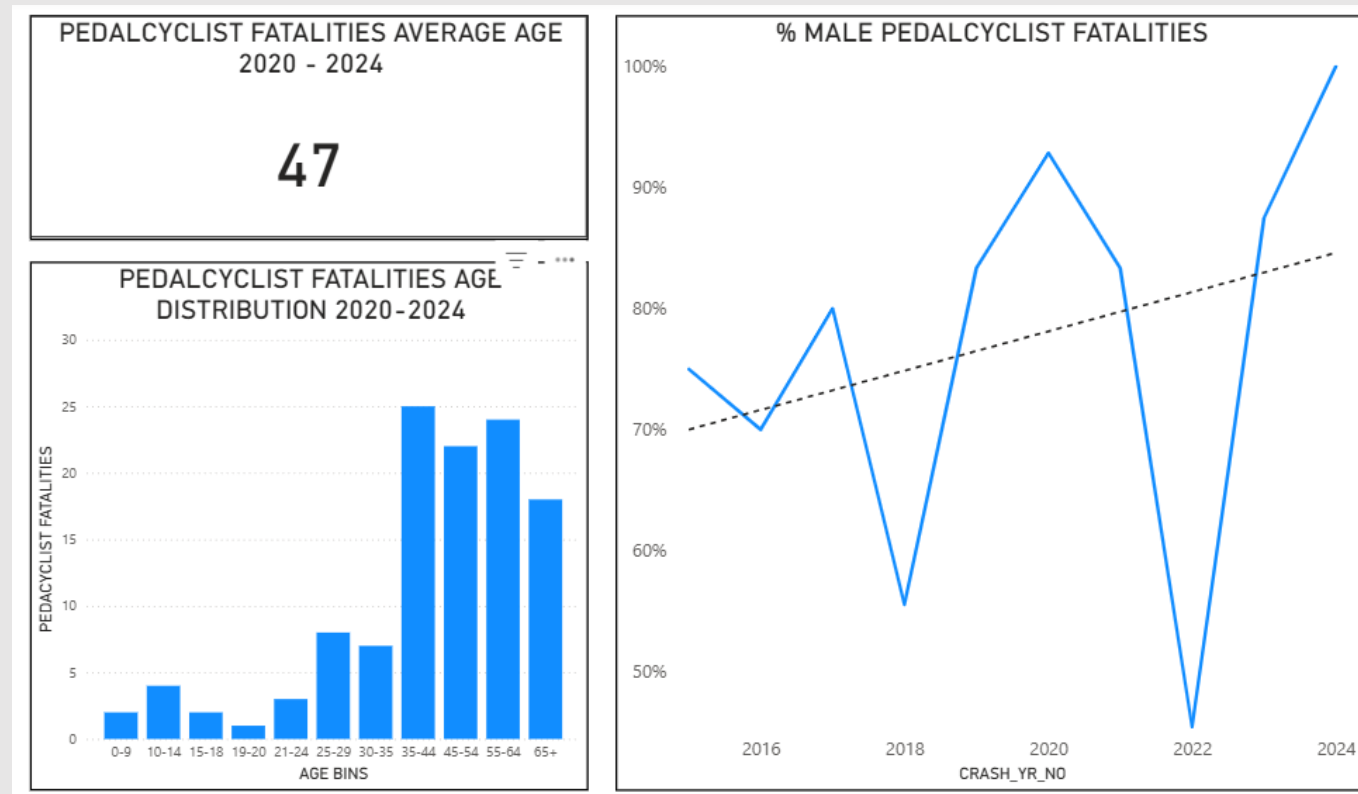


# History shows: 2024 was unusually low



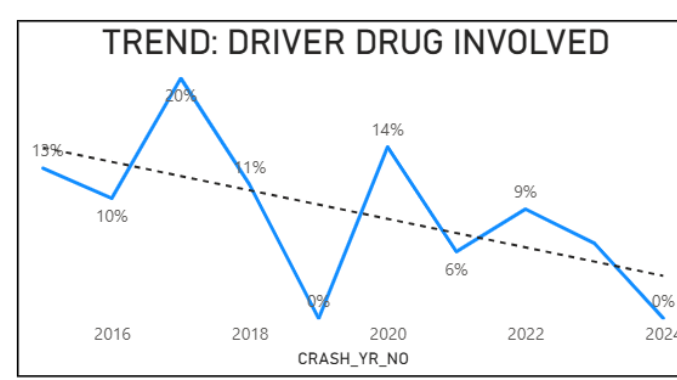
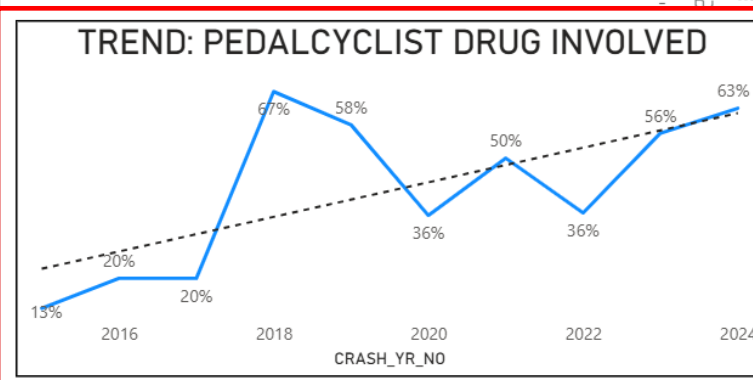
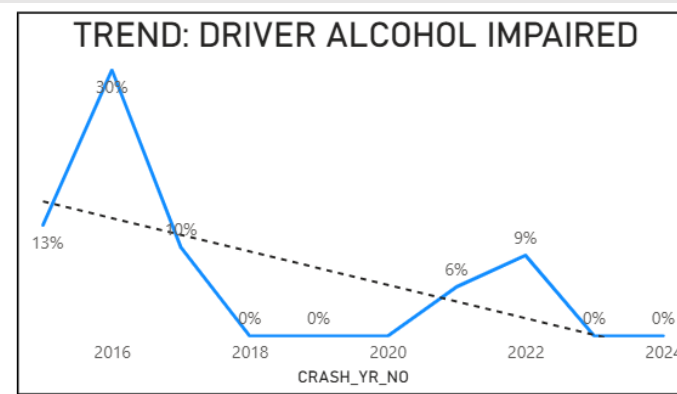
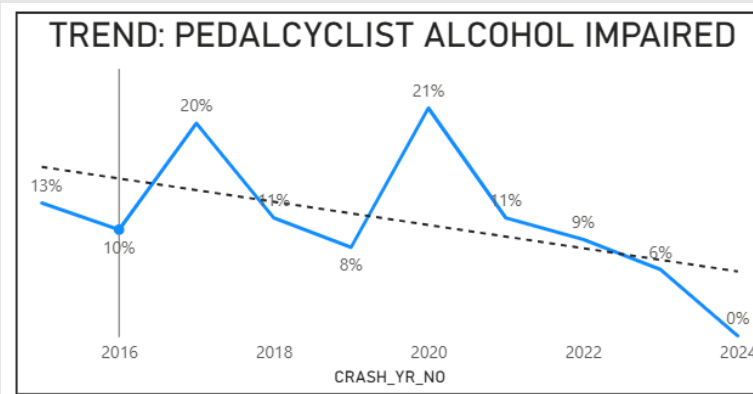
# Age & Sex Demographics

- Increasing trend in the % of Pedalcyclist Fatalities that are male
- The age distribution has been consistent through the years, with an average age of 47



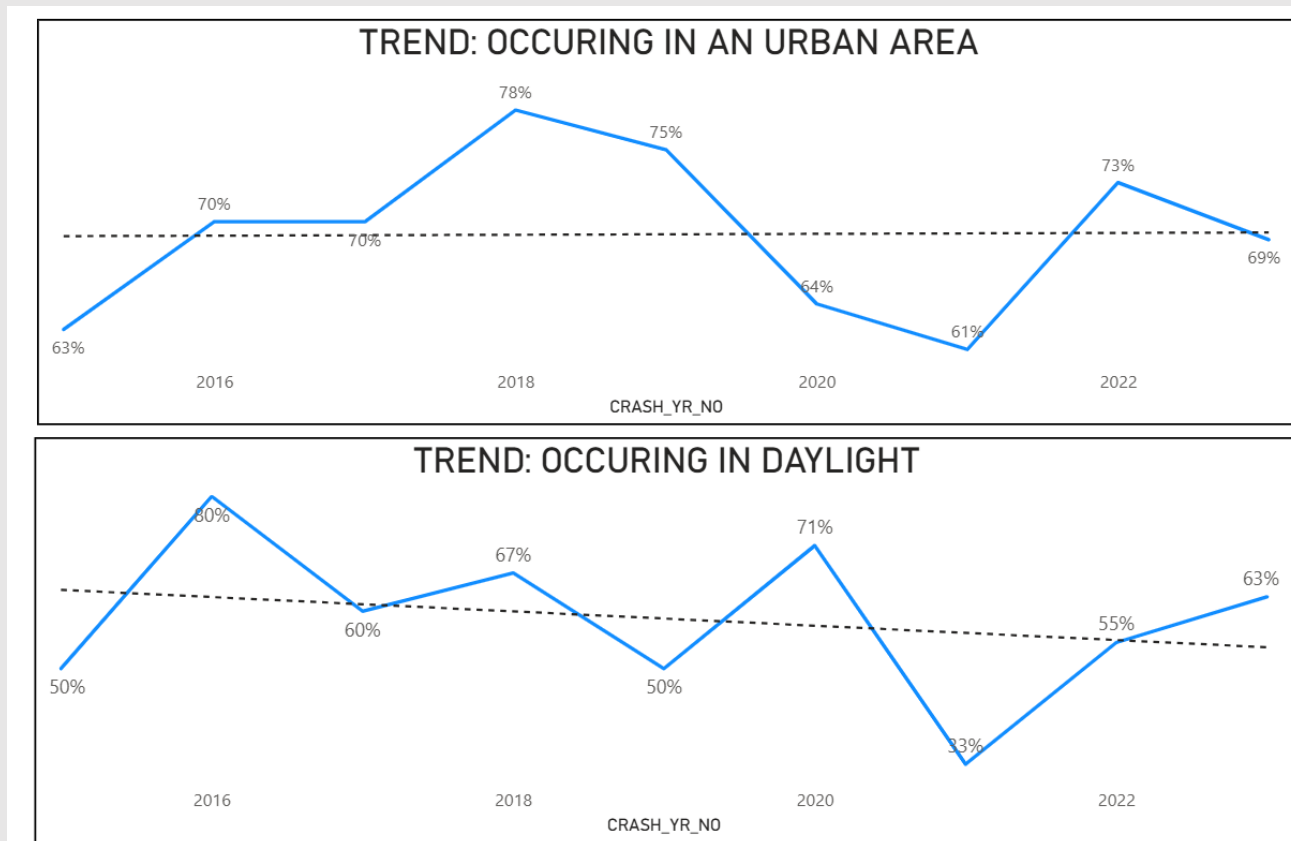
# Alcohol or Drug Involvement

- Rates of both Alcohol-Impairment and Drug-Involvement amongst Drivers (in Pedalcyclist fatal crashes) is trending down
- Increasing rate of Drug-Involvement amongst Pedalcyclists



# Conditions

- No observable trend in the % of Pedalcyclist Fatalities occurring in Urban Areas
- Slight downward trend in % of Pedalcyclist Fatalities occurring during Daylight



# Map

- Map reinforces that a majority of Pedalcyclist Fatalities occur in Urban areas, but Rural areas are not immune

