

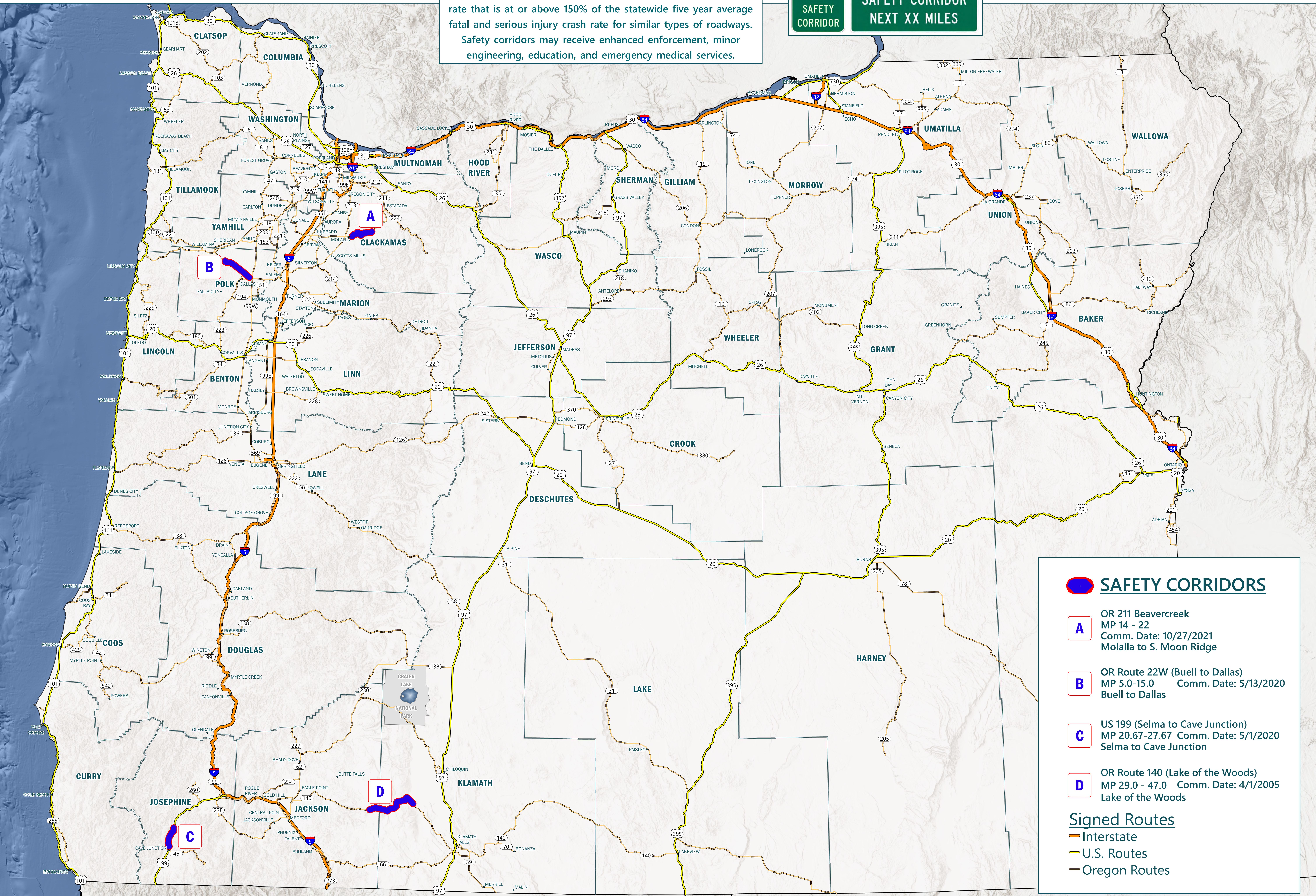
OREGON DEPARTMENT OF TRANSPORTATION SAFETY CORRIDORS

Safety corridors are segments of the state highway system that have a local five year average fatal and serious injury crash rate that is at or above 150% of the statewide five year average fatal and serious injury crash rate for similar types of roadways. Safety corridors may receive enhanced enforcement, minor engineering, education, and emergency medical services.

HIGHWAY SIGNAGE: TRAFFIC FINES DOUBLE

END SAFETY CORRIDOR

SAFETY CORRIDOR NEXT XX MILES



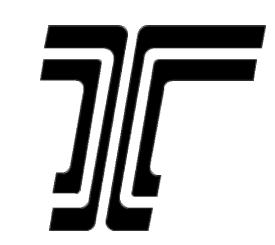
SAFETY CORRIDORS

- A** OR 211 Beavercreek
MP 14 - 22
Comm. Date: 10/27/2021
Molalla to S. Moon Ridge
- B** OR Route 22W (Buell to Dallas)
MP 5.0-15.0 Comm. Date: 5/13/2020
Buell to Dallas
- C** US 199 (Selma to Cave Junction)
MP 20.67-27.67 Comm. Date: 5/1/2020
Selma to Cave Junction
- D** OR Route 140 (Lake of the Woods)
MP 29.0 - 47.0 Comm. Date: 4/1/2005
Lake of the Woods

Signed Routes

- Interstate
- U.S. Routes
- Oregon Routes

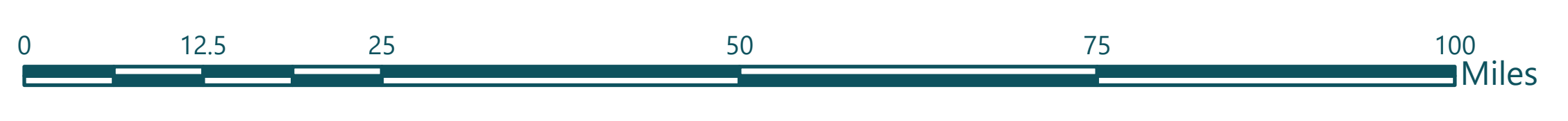
DISCLAIMER: THIS PRODUCT IS FOR INFORMATIONAL PURPOSES ONLY AND MAY NOT HAVE BEEN PREPARED FOR OR BE SUITABLE FOR LEGAL, ENGINEERING OR SURVEYING PURPOSES. USERS OF THIS INFORMATION SHOULD REVIEW OR CONSULT THE PRIMARY DATA AND INFORMATION SOURCES TO ASCERTAIN THE USABILITY OF THE INFORMATION.



Produced by ODOT - GIS Unit
odotmaps@odot.oregon.gov - April 2023
Project number: 23_56

FOR ADDITIONAL INFORMATION, CALL:
ODOT TRANSPORTATION SAFETY DIVISION (503)-986-4195 OR SEE
[HTTP://WWW.OREGON.GOV/ODOT/TS/PAGES/ROADWAYSAFETY.ASPX](http://www.oregon.gov/odot/ts/pages/roadwaysafety.aspx)

2023



\\GIS_RESOURCES\GIS\WORK\GIS23_56_SAFETY_SECTION_MAPPING\SAFETY_CORRIDORS\UPDATE_2023.APRX