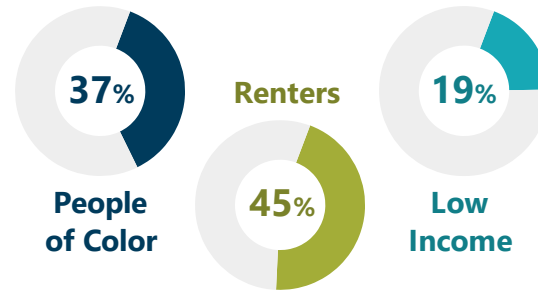
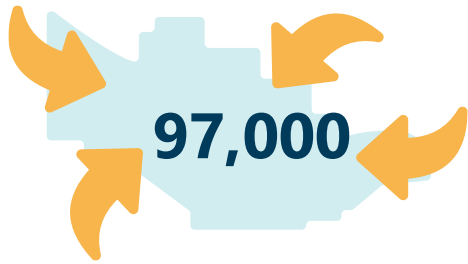


Who experiences transportation challenges in the Westside Corridor?

The Westside Study Area, centered on the US 26 Sunset Highway from Hillsboro through the Vista Ridge Tunnel, is home to approximately **90,000 residents and 124,000 jobs**. It is a regional employment destination, with many people traveling into the area for work, and an economic engine for Oregon, producing many high value exports.



Employment & Commute Trips

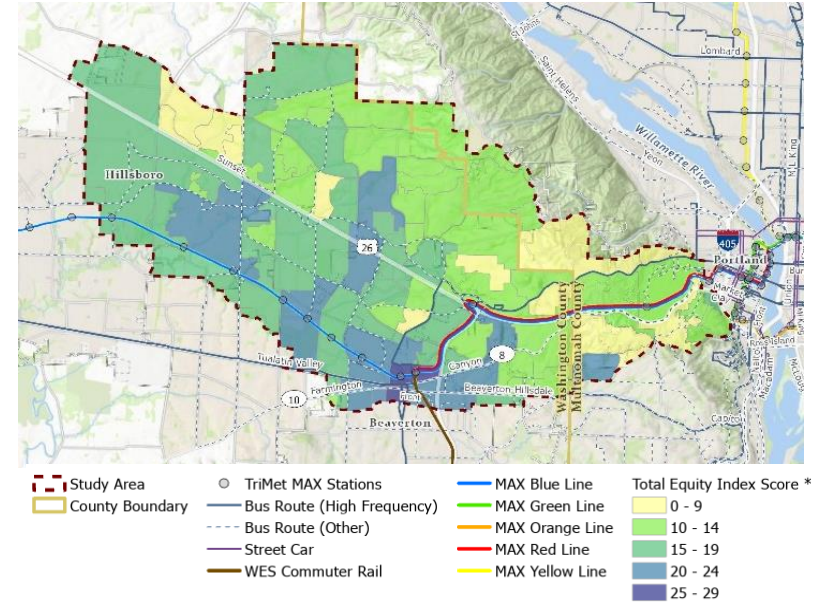
Washington County is a major employment center. Within the study area, roughly **97,000** non-resident workers commute into the study area daily, while 64,000 residents commute outside the study area for work. Notably, 27,000 people both live and work here. (2018 data)

Transit use in the Westside Corridor is higher than across the region, making up 9% of commute trips, as of 2018. We recognize COVID-19 has changed the way some travel, and this study reflects these changes. The busiest TriMet stops are now at major transfer points.

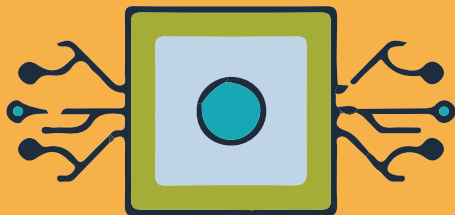
Residents & Housing

Westside residents are more racially diverse than the region and state, with over 37% residents of color. Forty-five percent of households are renters, which is higher than the region.

The percentage of car-free households (6.5%) and low-income households (19%) are both lower than the regional averages.



This map of the study area shows TriMet's Transit Equity Index. Many parts of the area score high in opportunity for improved transit service and access to jobs for equity priority communities.

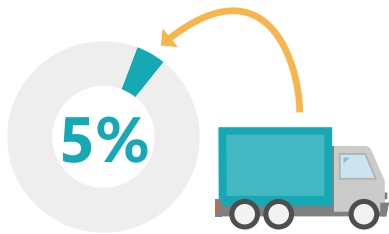


Silicon Forest: High Tech Exports

- Oregon's thriving high-tech industry includes more than 6,000 businesses statewide that provide over **81,000 jobs**.
- Oregon exported **\$15 billion** in electronics in 2021. This made up 60% of Oregon's exports, and much of that value comes from Washington County businesses.

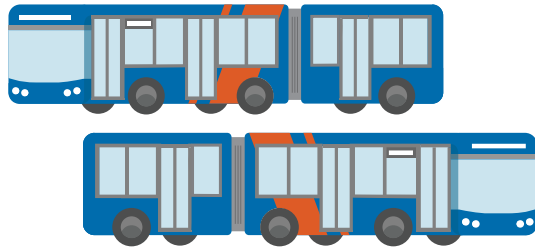
What Do We Know?

Existing and expected future conditions highlight transportation issues and needs on the Westside.



Cars and Freight

Although, US26 has the highest freight volume of all non-interstate highways in the region, just **five percent** of trips are freight vehicles, indicating that freight is not the primary cause of traffic congestion.



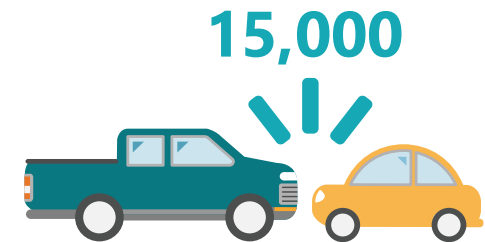
Westside Transit

The Westside corridor has **frequent service** bus routes and MAX light rail service. However, there are few north/south transit routes, and many employers are located on large campuses or office parks with poor traffic circulation for transit service.



Traffic Congestion

Travel times can vary **20+ minutes** for a typical trip from Hillsboro's employment areas to PDX Airport, due largely to congestion on US26.



Safety

The study area has seen **15,000 crashes** in the past 5 years. Many westside arterials have high rates of injuries and fatalities relative to the region, including Tualatin Valley Highway, Baseline Rd, Cornell Rd, Cornelius Pass Rd, and Farmington Rd.

What's Next?

- **Evaluating Potential Solutions.** In early 2023, the project team for the Westside Multimodal Improvements Study will evaluate a variety of different investments, including programs, policies, and infrastructure projects to understand how well different investment options address the study's priority areas: mobility and reliability, safety, social equity, climate action, and economic vitality.
- **Community Survey.** We want to hear from you! A project survey will be available for public input in early 2023.
- **Focus Groups.** The project team is working with community-based organizations to host in-depth focus groups in early 2023 to understand travel needs and get feedback on potential investments.

Visit the **project website** and sign up for the **mailing list** to stay informed and engaged with the study.

<https://www.oregon.gov/odot/UMO/Pages/wmis.aspx>



