

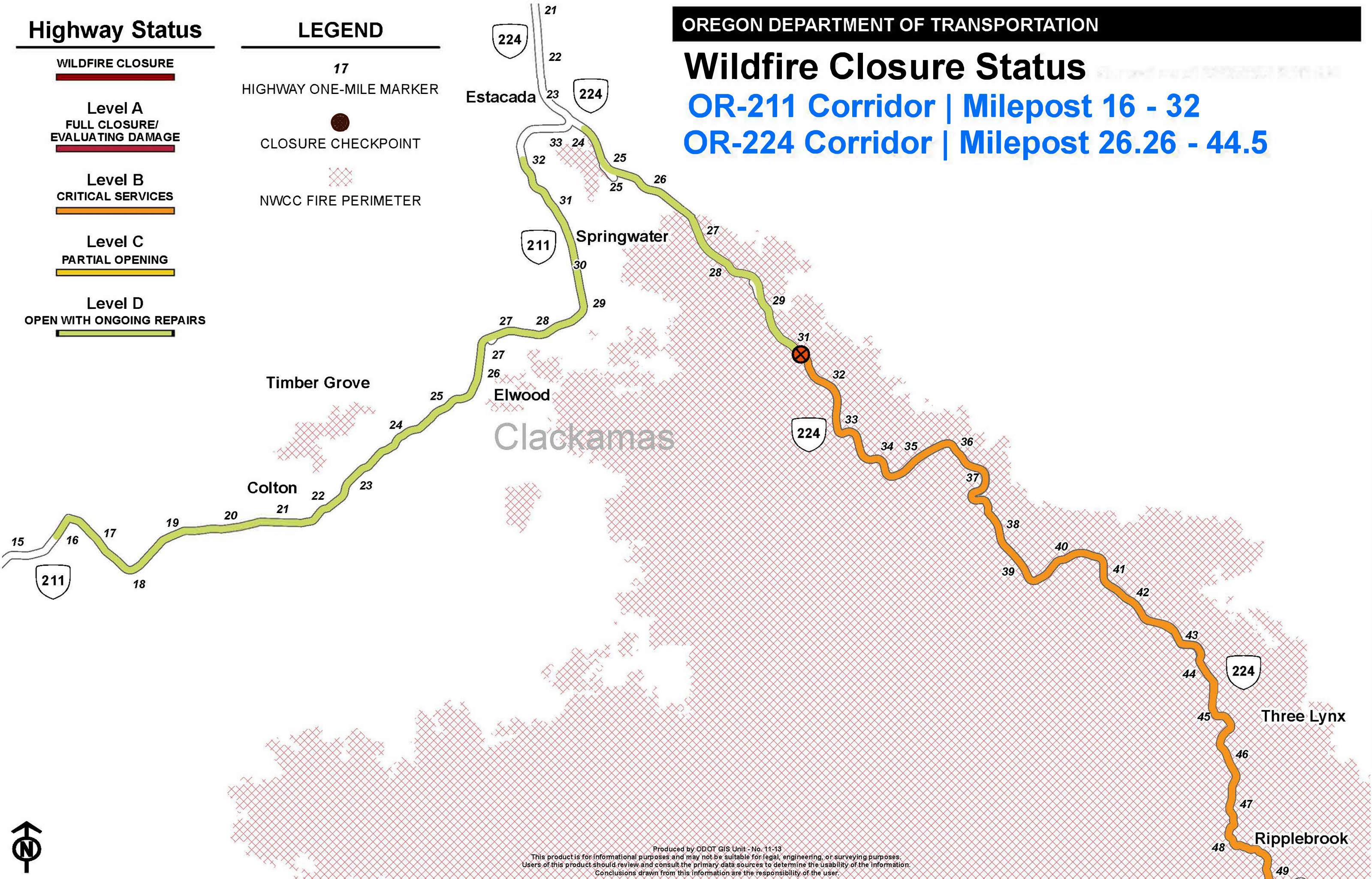
Highway Status

- WILDFIRE CLOSURE
- Level A
FULL CLOSURE/
EVALUATING DAMAGE
- Level B
CRITICAL SERVICES
- Level C
PARTIAL OPENING
- Level D
OPEN WITH ONGOING REPAIRS

LEGEND

- 17
HIGHWAY ONE-MILE MARKER
- CLOSURE CHECKPOINT
- NWCC FIRE PERIMETER

Wildfire Closure Status
OR-211 Corridor | Milepost 16 - 32
OR-224 Corridor | Milepost 26.26 - 44.5



Produced by ODOT GIS Unit - No. 11-13
This product is for informational purposes and may not be suitable for legal, engineering, or surveying purposes.
Users of this product should review and consult the primary data sources to determine the usability of the information.
Conclusions drawn from this information are the responsibility of the user.