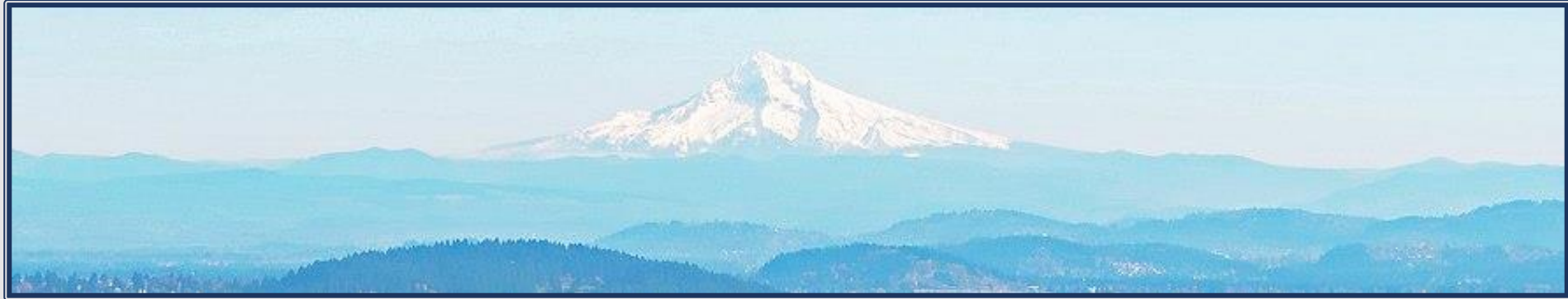


ODOT's Climate Office has three program areas:



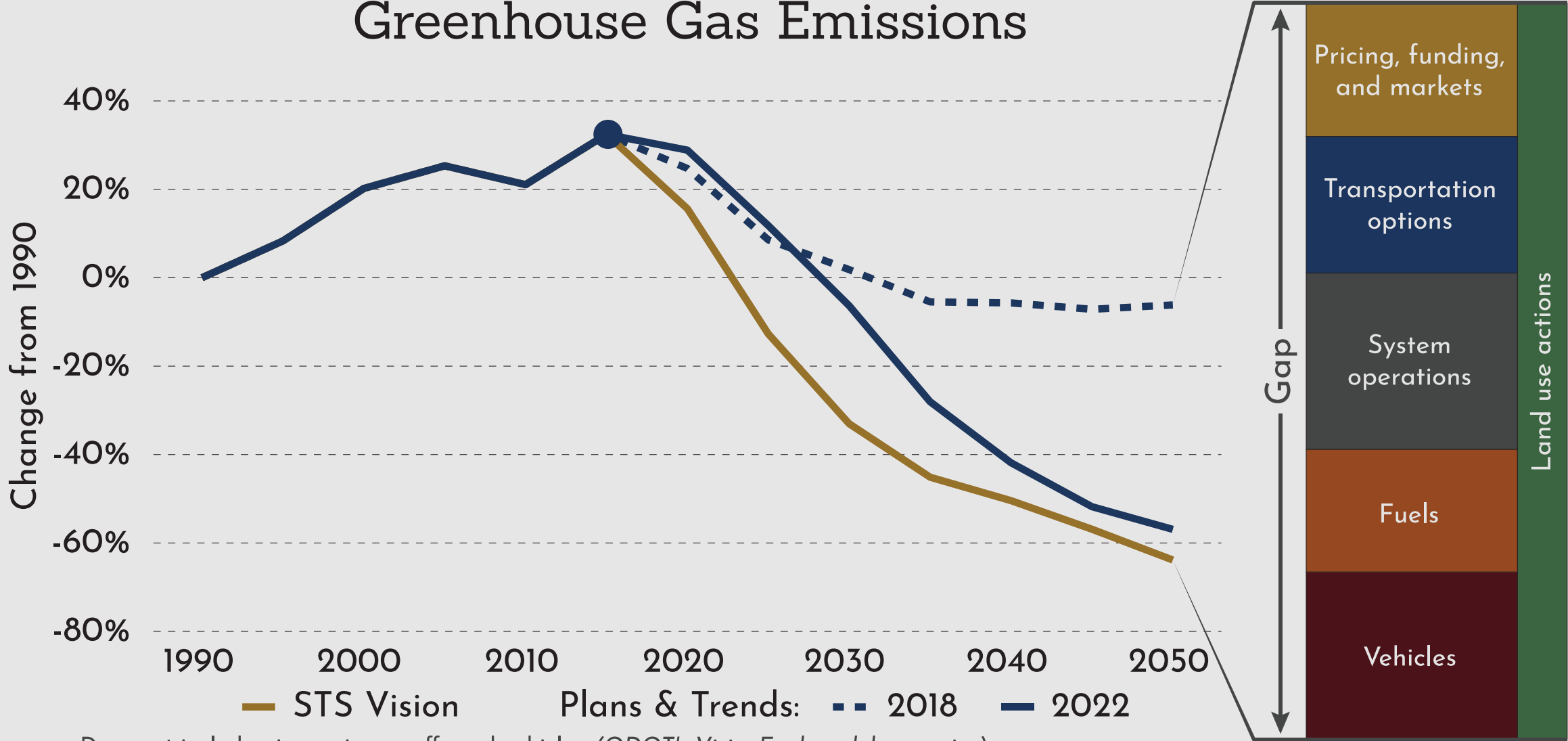
Why do we have a Climate Office?



- Transportation accounts for about 35% of greenhouse gas emissions in Oregon.
- GHG emissions will exacerbate climate change with increasing impacts on weather, people, plants, and animals.
- ODOT is committed to reducing GHG. We follow the Statewide Transportation Strategy (STS) for GHG reduction.
- Flooding, landslides and wildfires are more frequent. They damage infrastructure, costs taxpayers hundred of millions of dollars per year, and negatively affect our communities where we live, work and play.

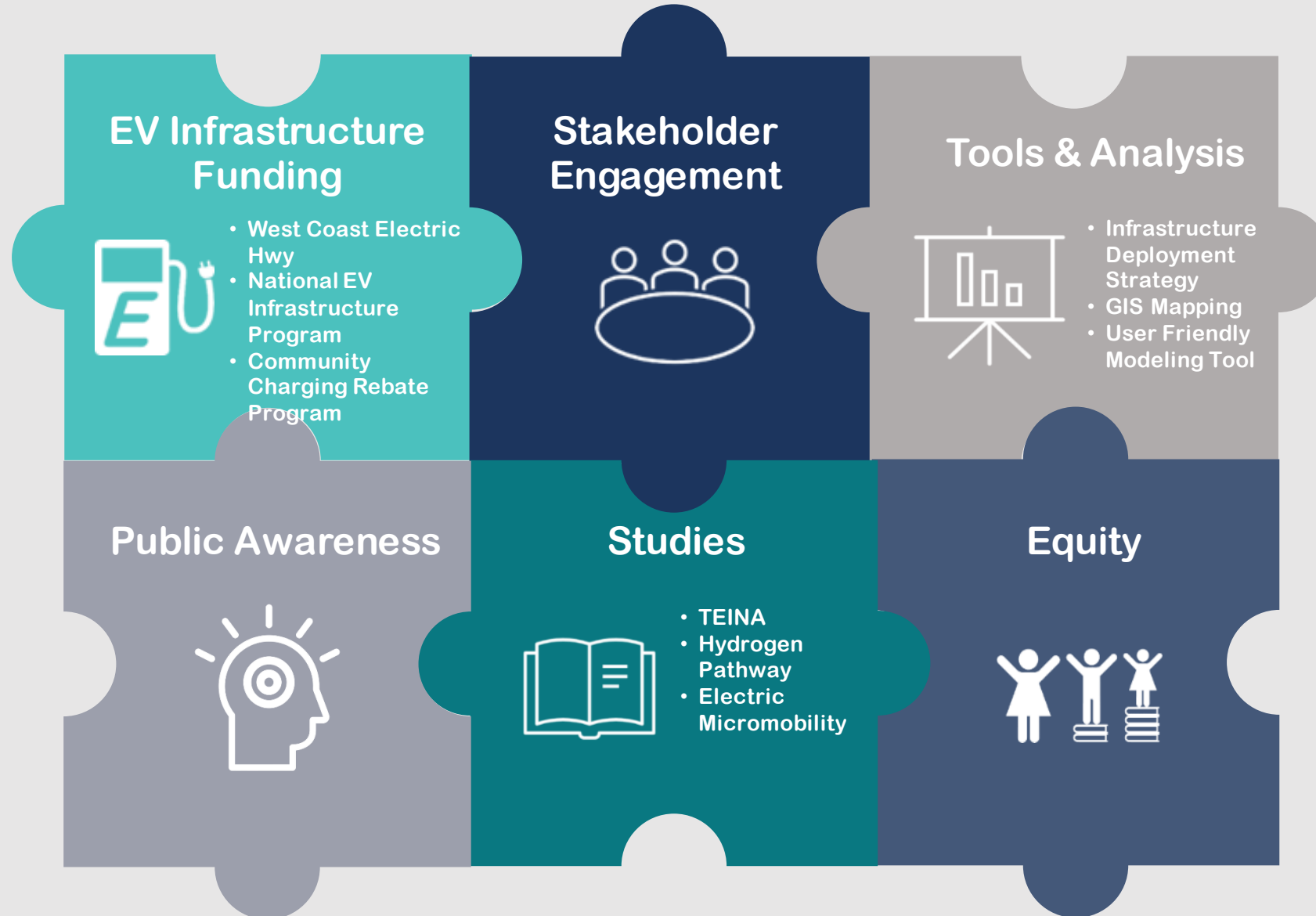
Transportation accounts for about 35% of GHG emissions in Oregon. The **Mitigation Program** helps carry out the Statewide Transportation Strategy for emissions reductions. Closing the gap requires collaboration. [Track our progress.](#)

Greenhouse Gas Emissions



Does not include air, marine or off-road vehicles. (ODOT's VisionEval model scenarios)

The **Transportation Electrification** team supports widespread adoption of electric vehicles (EV) and convenient and equitable access to EV charging.



The Sustainability Program looks at ODOT's environmental footprint, including agency-specific GHG emission reduction opportunities.



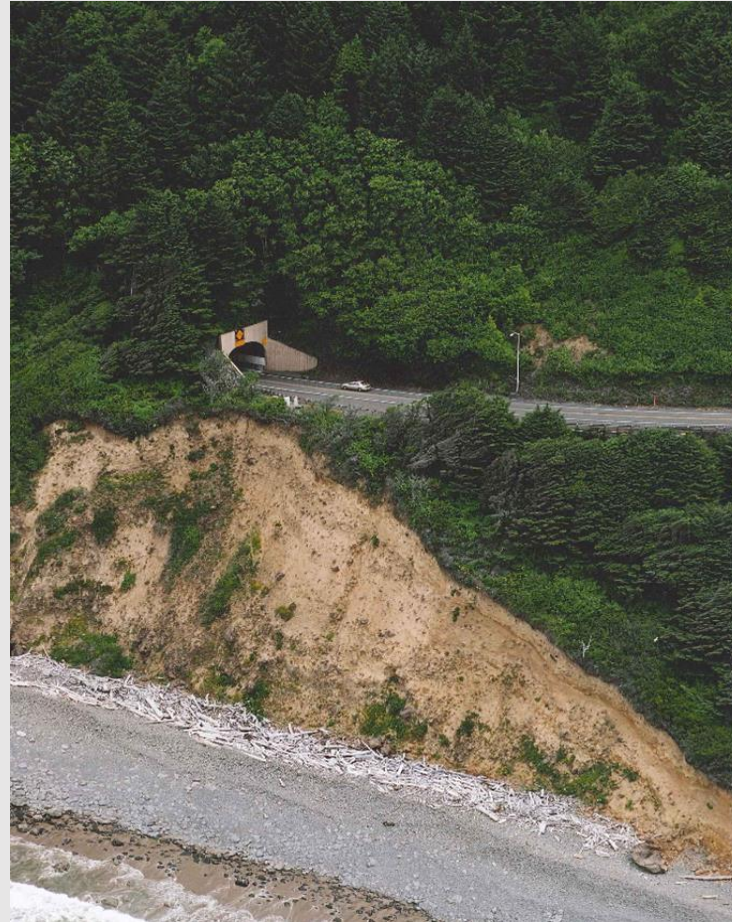
The Sustainability Program leads progress on:

- **Energy efficiency and high performance buildings**
- **Alternative vehicles and fleet fuels**
- **Water conservation**
- **Materials management/ recycling**
- **Oregon Solar Highway Program**

The Adaptation Program focuses on enhancing the resilience of transportation operations and infrastructure to climate change impacts and extreme weather.



Extreme Rain, Snow and Flooding



Erosion & Landslides



Wildfires

Climate Office programs are integrated and supported by a *Data and Analysis* team.

