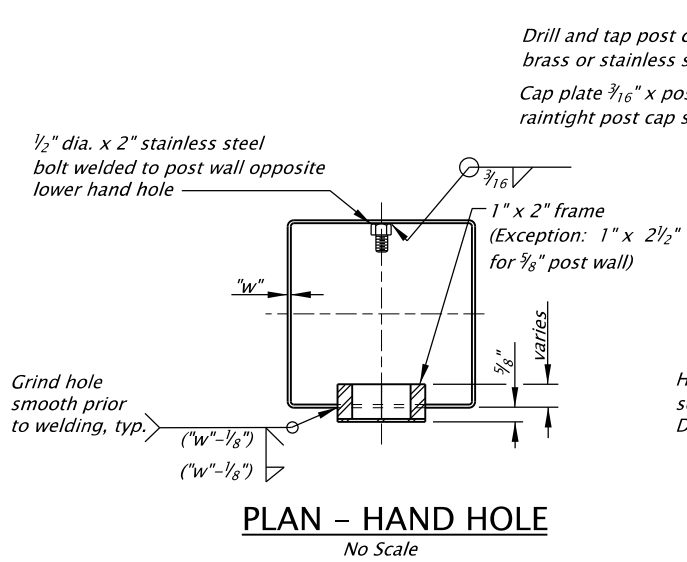
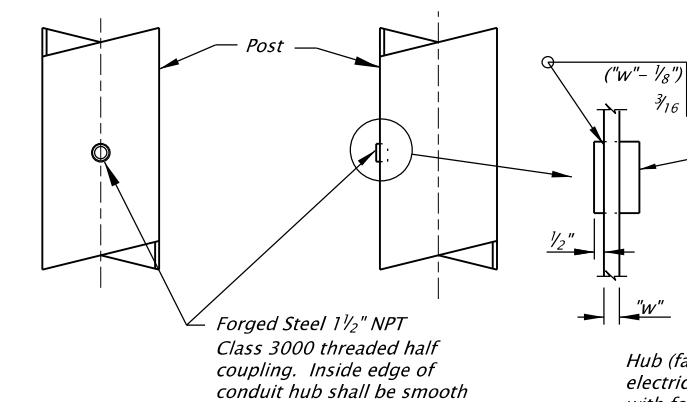


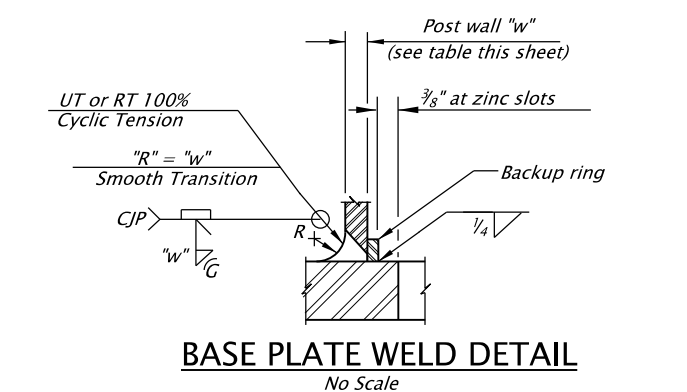
tm617.dgn 10-JUL-2020



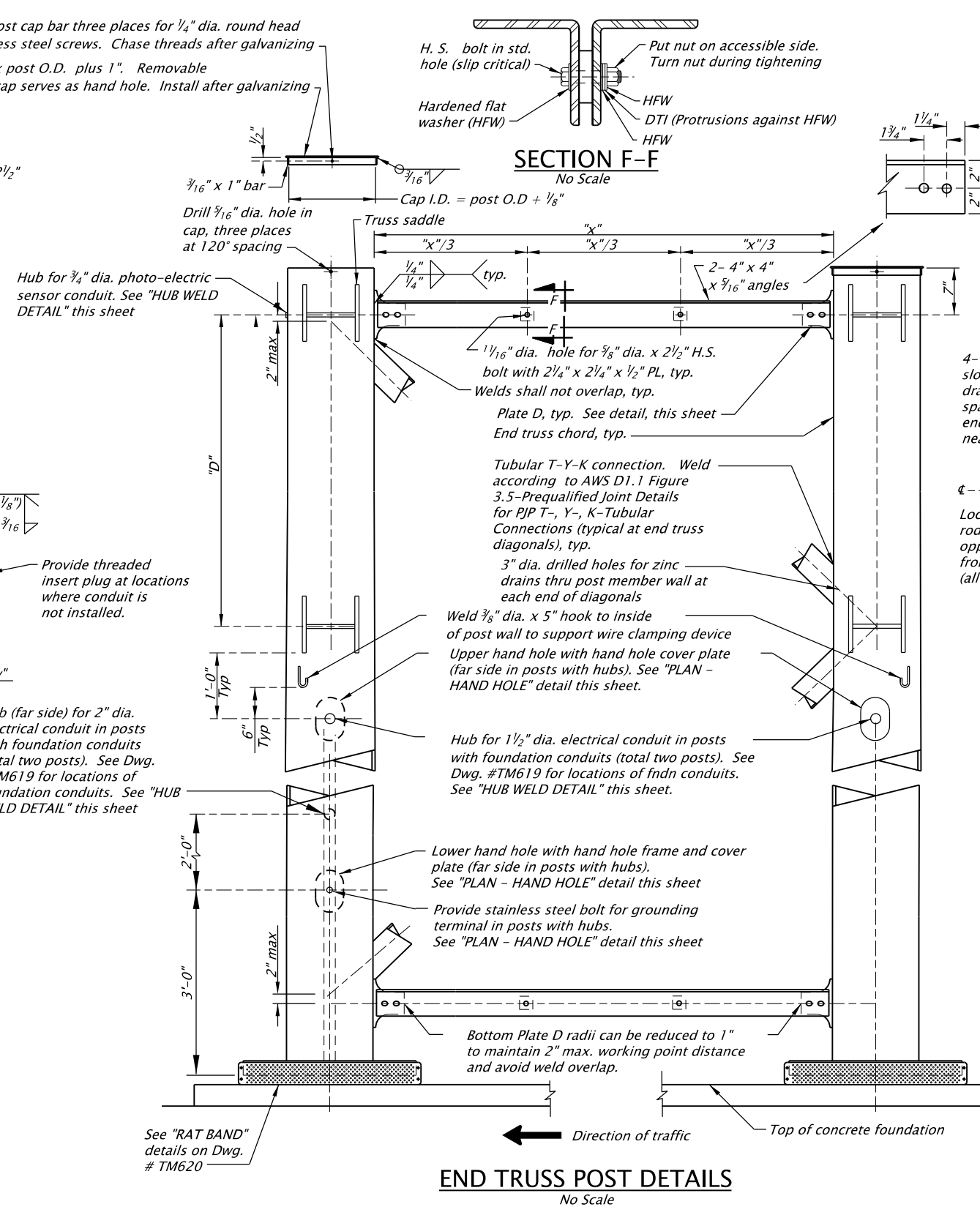
**PLAN - HAND HOLE**  
No Scale



**HUB WELD DETAIL**  
No Scale

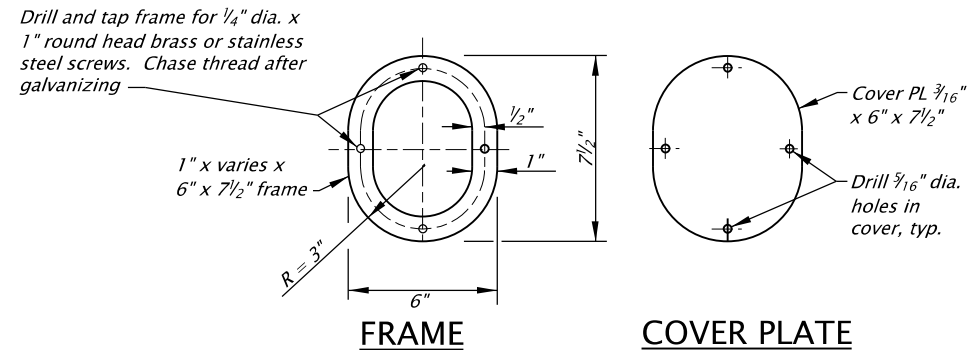


**BASE PLATE WELD DETAIL**  
No Scale

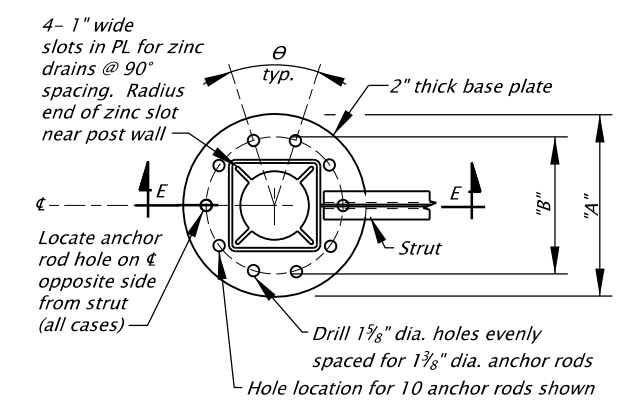


**END TRUSS POST DETAILS**  
No Scale

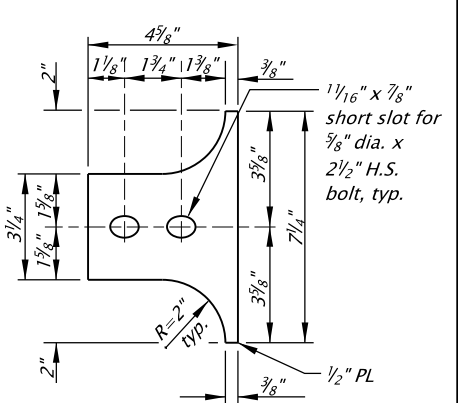
Note: See notes on Dwg. TM615



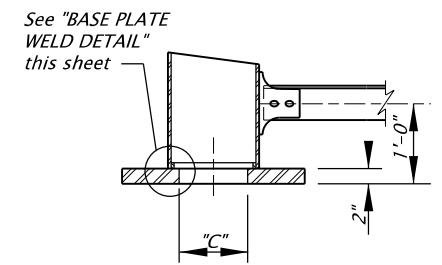
**HAND HOLE DETAILS**  
No Scale



**PLAN - BASE PLATE**  
No Scale



**PLATE D**  
No Scale



**SECTION E-E**  
No scale

END TRUSS POST SIZE (HSS) (in.)	"A"	"B"	"C"	NUMBER OF ANCHOR RODS	θ (degree)	"w"
Sq. HSS 12 x 12 x 1/2	27"	21"	9"	10	36	1/2"
Sq. HSS 14 x 14 x 1/2	30"	24"	11"	12	30	1/2"
Sq. HSS 16 x 16 x 1/2	32 1/2"	26 1/2"	12 1/2"	14	25.714	1/2"
Sq. HSS 16 x 16 x 3/8	32 1/2"	26 1/2"	12 1/2"	18	20	3/8"
Sq. HSS 18 x 18 x 3/8	35 1/2"	29 1/2"	15"	20	18	3/8"

Accompanied by dwgs. TM614, TM615, TM616, TM618, TM619, TM620

CALC. BOOK NO. 5037/6134

SDR DATE 07-JAN-2011

NOTE: All material and workmanship shall be in accordance with the current Oregon Standard Specifications

**OREGON STANDARD DRAWINGS**  
**STANDARD TRUSS TYPE SIGN BRIDGE 50' TO 167' SPAN RANGE END TRUSS DETAILS**

DATE	REVISION DESCRIPTION

The selection and use of this Standard Drawing, while designed in accordance with generally accepted engineering principles and practices, is the sole responsibility of the user and should not be used without consulting a Registered Professional Engineer.