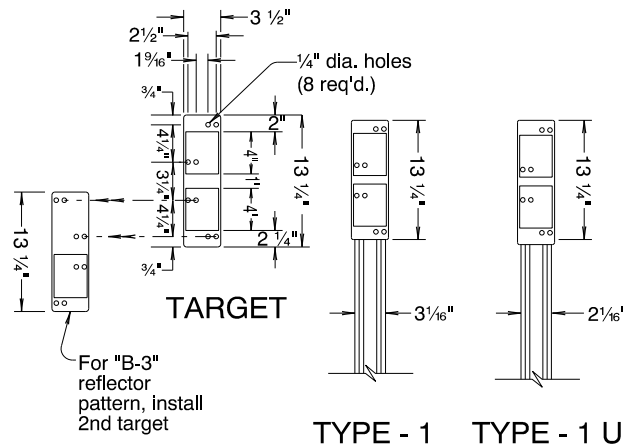
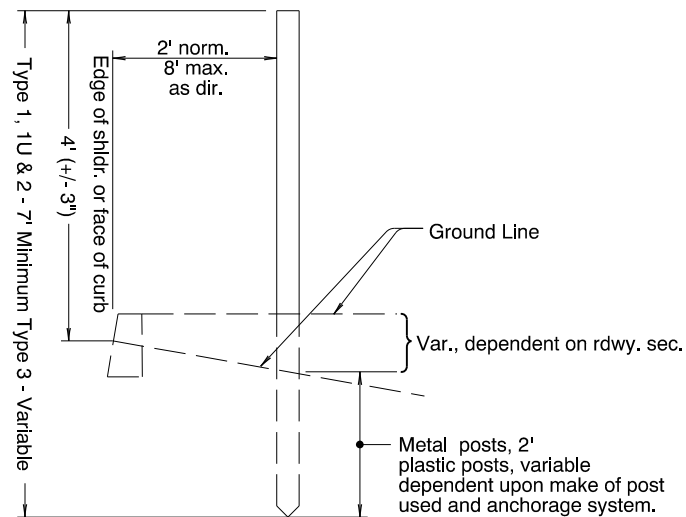
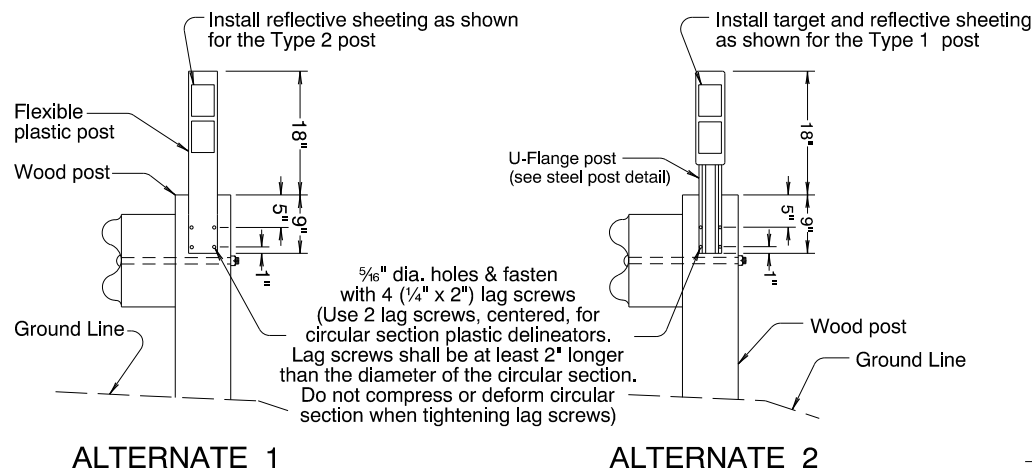


TYPE - 2

TYPE - 3

FLEXIBLE PLASTIC POSTS**STEEL POSTS****INSTALLATION DETAIL**

ALTERNATE 1

ALTERNATE 2

GUARDRAIL AREAS (WITH WOOD POSTS)**NOTES:****POST:**

Galv. steel, nominal weight Type 1, 2 lb/ft,
Type 1 U, 1.12 lb/ft.

See Standard Drawing TM571 for steel post dimensions
and details.

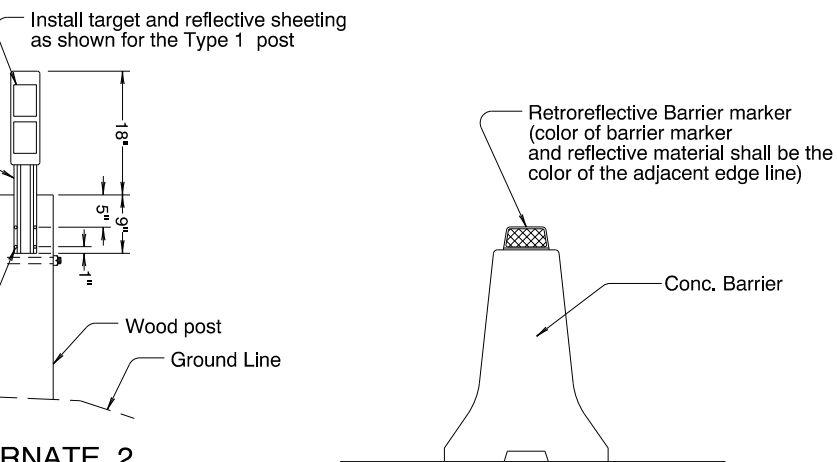
TARGET:

Aluminum sheet, nominal thickness .050". Fasten to post
with 3/16" dia. aluminum blind rivets and washers.

For "B-3" reflector pattern, top target shall overlap bottom
target.

REFLECTORS:

3" x 4" reflective sheeting unless otherwise shown.
(3 1/2" x 4" reflective sheeting is an acceptable alternate
unless otherwise shown.)
Acrylic prismatic reflectors acceptable on Type 1, 1 U, 2
and 4 posts and Type 5 barrier mounts.
Place required number in sequence from top of target.



TYPE - 5

CONCRETE BARRIER AREAS

(Install barrier markers at 50' spacing unless otherwise noted in plans)

GENERAL NOTES:

- Spacing shall be measured along the shoulder.
- On roads with less than 500 vehicle ADT, delineators are not to be used except where situations such as sharp horizontal curves, etc. exist.
- To clear driveways, crossroads etc., or for required adjustments at ramps and at intersections, either:
(a) vary placement of that post up to 25% of spacing shown, or;
(b) eliminate said post if limit of variation must be exceeded.
- Judgement should be exercised in the installation of delineators in cut section, particularly on roads constructed to older standards where ditches are narrow and where delineators tend to hamper maintenance operations.
- On horizontal curves place delineators nearly opposite each other.
- At guard rail locations the delineators are to be installed behind the rail and shall be located adjacent to guard rail posts as shown for Type 4 Delineators.
- Install all delineators with reflectors facing adjacent oncoming traffic.
- Offset delineators an additional 4' in areas of heavy snow removal operations.
- Backside Delineators may be used in frequently snow plowed areas where use of snow poles is not justified. When Backside Delineators are specified, substitute "W-1" and "W-2" with "W-1B" and "W-2B" respectively, on Type 1 steel posts. Do not install Backside Delineators on one-way sections of roadway, freeways and ramps, or on radius sections.
- Refer to TM 222 for bracket assembly details for Backside Reflector Pattern.

To be accompanied by Drg. No. TM571, TM575, TM576, and/or TM577 as specified.

CALC. BOOK NO. <u> N/A </u>	SDR DATE <u> 01/06/2012 </u>
NOTE: All material and workmanship shall be in accordance with the current Oregon Standard Specifications	
OREGON STANDARD DRAWINGS	
TRAFFIC DELINEATORS	
2021	
DATE	REVISION DESCRIPTION

The selection and use of this Standard Drawing, while designed in accordance with generally accepted engineering principles and practices, is the sole responsibility of the user and should not be used without consulting a Registered Professional Engineer.

REFLECTOR PATTERN TABLE					
	Color Type	Color Of Reflector And Target Or Post	Number Of Reflectors	Color Of Reflector And Target Or Post On Backside	Number Of Reflectors On Backside
Standard Pattern	"W-1"	White	1	Not Applicable	Not Applicable
	"W-2"	White	2		
	"Y-1"	Yellow	1		
	"Y-2"	Yellow	2		
	"B-1"	Blue	1		
	"B-2"	Blue	2		
	"B-3"	Blue	3		
	"R-1"	Red	1		
Backside Pattern	"W-1B"	White	1	White	2
	"W-2B"	White	2	White	2

TANGENT	HORIZONTAL CURVES				
▲ MAX. SPACING EACH SIDE OF ROADWAY IN FEET	▲ MAX. SPACING EACH SIDE OF ROADWAY IN FEET				
	DEGREE OF CURVE	ON CURVE	IN ADVANCE OF & BEYOND CURVE		
400			FIRST SPACE	SECOND SPACE	THIRD SPACE
	Lower Than 1	300	300	300	300
	1	230	300	300	300
	2	160	300	300	300
	3	130	260	300	300
	4	110	220	300	300
	5	100	200	300	300
	6	90	180	270	300
	7 - 8	80	160	240	300
	9 - 11	70	140	210	300
	12 - 16	60	120	180	300
	17 - 22	50	100	150	300
	23 - 34	40	80	120	240
	35 - 53	30	60	90	180
	54 & Higher	20	40	60	120

(Min. spacing 20 feet)

(▲ Install "W-1" reflective pattern unless otherwise noted. See Standard Drawings TM575 thru TM577 for spacing, layout, and reflective pattern of delineators at interchange ramps, channelized intersections, lane reductions, emergency escape ramps and freeway crossovers.)

DELINEATOR SPACING TABLE FOR TYPES 1, 1U, 2, and 4