

APPENDIX H - OREGON 24-HOUR PRECIPITATION MAPS

The 24-hour precipitation for the 2-year through 1000-year recurrence intervals in Oregon are provided in this appendix. This precipitation data can be viewed on maps in this appendix or using ESRI ArcReader.


A GIS project has been created for use to view Oregon's precipitation data in conjunction with other useful base map information. This is an ESRI ArcReader project and requires ArcReader 9.3.1 software. The following steps are provided to assist with viewing the precipitation data using ArcReader:

Step 1 - The required software is ArcReader 10. There is no cost for ArcReader. ODOT staff can contact the Help Desk to request the installation of this program. Others can download this software from the ESRI website:

<http://www.esri.com/software/arcgis/arcreader/download.html>

Step 2 - Open the precipitation project. ODOT staff can use the following link to open the precipitation project, download the raw GIS data from ODOT's ftp site:

<ftp://ftp.odot.state.or.us/techserv/Geo-Environmental/Hydraulics/Precip/>

Step 3 - Select the "Identify"  and the following popup window appears (Figure 1). Select the drop down arrow and select "Precip Data" (Figure 2)

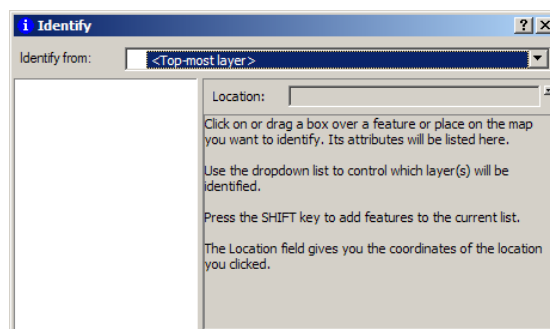


Figure 1

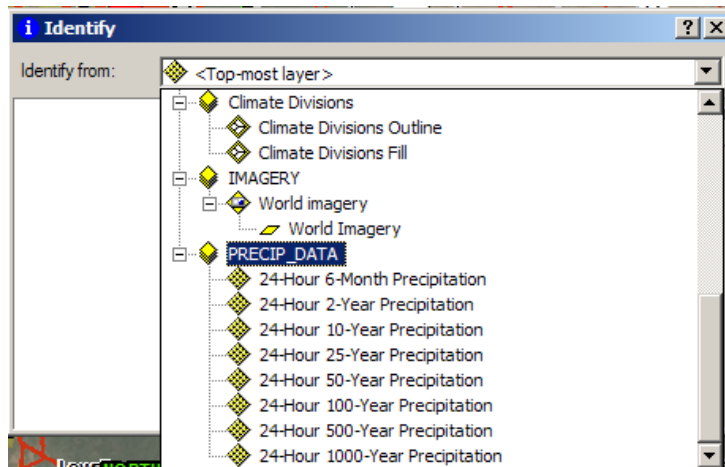


Figure 2

Step 4 - Locate and select the project site using the “Identify” button. Precipitation data for the selected point will be presented as shown in Figure 3.

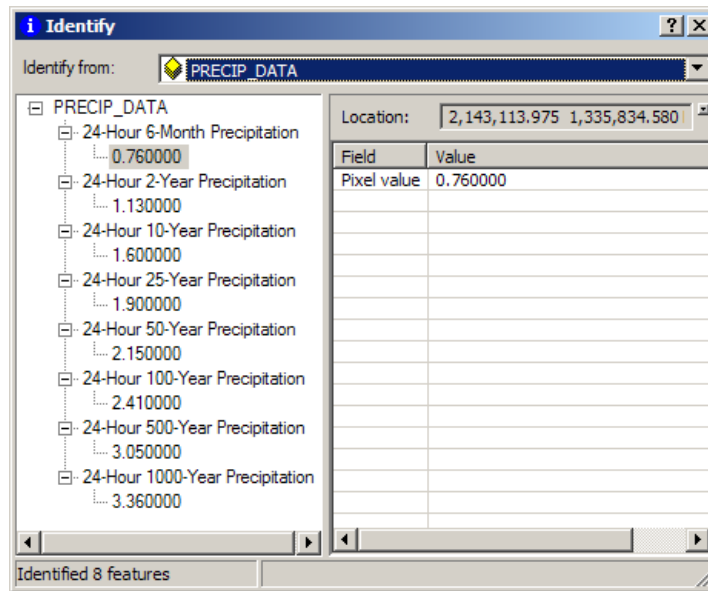


Figure 3