



State Integrated Preparedness Plan

July 1, 2023, to June 30, 2026

Version 1.3 | 2025 Update

Table of Contents

PURPOSE.....	3
2025 Update Process – V1.3	3
2026 Update Process – V2.0	7
Updated Preparedness Priorities	7
2026 Process Overview	7
PREPAREDNESS ACTIVITY CONSIDERATIONS	9
Threats, Hazards and Risks.....	9
Capability Assessments	9
PREPAREDNESS PRIORITY PROGRESSION	10
Preparedness Priorities POETE Outlook.....	11
Planning	11
Organization	11
Equipment	11
Training	12
Exercise	14
Continuity of Operations.....	16
Fire Management and Suppression	17
Mass Care Services.....	18
Operational Communications	19
Operational Coordination	20
Planning.....	21
Public Health, Healthcare, and EMS.....	22
Public Information and Warning	23
DOCUMENT MAINTENANCE	24
NEXT STEPS AND IMPLEMENTATION	24
MULTI-YEAR SCHEDULE OF PREPAREDNESS ACTIVITIES.....	25

PURPOSE

The Integrated Preparedness Plan (IPP) documents the planning, organizational, equipment, training and exercise (POETE) priorities for a multi-year period – this version outlines priorities over a three-year period from July 2023 through June 2026. This product is a living document, updated and refined annually via regional, state government, and internal Oregon Department of Emergency Management (OEM) Integrated Preparedness Planning Workshops (IPPWs).

The priorities identified in this document are separated by core capabilities and derived from analysis of existing strategic guidance, threat assessments, and previous exercise and incident corrective action findings. A progressive, multi-year program enables organizations and jurisdictions to develop planning documentation related to the priority areas, train personnel on its content, and exercise those documents to validate and/or implement the product in a no-fault environment. There is no one set of preparedness priorities that will support the needs of every community in Oregon, the statewide priorities are broad enough to allow all jurisdictions and state agencies to plan activities that align with their individual priorities and requirements as well as support the priorities of the state.

The IPP combines POETE activities that develop or maintain capabilities in support of the established priorities. These activities were identified and confirmed in regional, state government, and internal Oregon Department of Emergency Management IPPWs. Local and tribal emergency management agencies, as well as all state agencies identified in the state's Comprehensive Emergency Management Plan (CEMP), were invited to participate in and provide their perspective and inputs during the IPPWs.

Included in this IPP is a schedule, which provides a graphic illustration of the proposed activities for the identified priorities, scheduled for July 1, 2024, through June 30, 2026.

2025 Update Process – V1.3

The Integrated Preparedness Cycle is a continuous process of planning, organizing/equipping, training, exercising, and evaluating/improving that ensures the regular examination of ever-changing threats, hazards, and risks. Preparedness priorities are developed to ensure that the needed preparedness elements are incorporated through this continual and reliable approach to achieve whole community preparedness.

This Oregon Statewide Integrated Preparedness Plan (IPP) cycle is a three-year forecast schedule with an annual review. The 2025 Annual Update is the third of three years, meaning the existing priority areas will remain the same through June 2026. The Oregon Department of Emergency Management asked County, Tribal, and State Department partners to participate in the 2025 Annual Update Process:

- A. **Organizational-Jurisdictional IPP Revision:** The 2025 process supported partners to revise existing IPP products developed during the 2024 update; inform future decision-making and actively participate in the State IPP process. The more organizations and jurisdictions that have active IPP products, the easier it is to develop a collaborative IPP product during both the annual update and multi-year development processes. This process requires local, tribal, and state partners to have strong IPP products to be successful. Municipal partners are not directly involved in this process, as their input should happen at a local and/or tribal IPP process-level.
- B. **Maintain Statewide Forecast Awareness:** The 2025 process increased statewide awareness to the ongoing planning, training, and exercise development and events for the next 12 months through the review/revision of data and/or information shared during the 2024 annual update.

The 2025 process built upon the successes and lessons learned during the 2024 process. Through item “A” above, and a general revision of the 2024 IPP product, statewide partners improved awareness to their preparedness activities, and those of regional and statewide partners.

- C. **Integrate Equipment Needs into the Process:** The 2025 process added the collection of equipment needs. The collection of equipment needs supported assessment of resources necessary to equip recently completed planning activities and identify current grant opportunities that may fulfill needs.

The 2025 process focused on State Government Agencies, County Governments, and Tribal Governments developing and implementing their own IPP products. Collectively, Oregon will enter a more informed and collaborative process in 2026 to create Version 2 of the State of Oregon IPP (July 1, 2026-June 30, 2029).

Development Phases

Phase	Scope	Schedule
Phase 1	Data Request & Development	December 2024-February 2025
Phase 2	Regional & State Government IPPWs	February-March 2025
Phase 3	Data Collation & IPP Draft	March-April 2025
Phase 4	Statewide IPPW & IPP Finalization	April-May 2025
Phase 5	IPP Rollout & 2026 Vision	June 2025

Phase 1 | Data Request & Development (December 2024 – February 2025)

OEM will distribute materials to support partners’ update or develop their forecast(s) and provide awareness to the 2025 IPP process. The development of a local, tribal, or organizational IPP should include engagement from critical internal and external partners that influence the 1–3-year forecast. This phase will include the following elements:

1. **IPP Process Awareness Notice | December:** OEM distributed a notice to all IPP participants in early December 2024 to share schedule, requests, and expectations.
2. **IPP Data Request | December:** OEM distributed a request for preparedness activity data submission in early December that was reviewed and discussed during the regional and state government IPPWs. The following data points were requested for the next 36 months:
 - a. Planning Activities: Participants should revise their forecast for the development of upcoming plans, processes, procedures, and policies in the next 36 months. Participants should identify the current and expected grant projects that include planning, training, or exercise events during this step.
 - b. Special Events: Identify special events coming to Oregon community that may require build-up planning, training, or exercise activities. Create a schedule of build-up events.
 - c. Training Events: Based on the planning activities and special events identified revise jurisdictional training schedule to support those efforts. Identify training that can be hosted locally and determine potential training needs. Consider training events partners (local and regional) are planning to host. And,

- d. **Exercise Events:** Based on the planning activities and special events identified, revise jurisdictional exercise schedule to support those efforts. Consider exercise events partners (local and regional) are planning to host.
3. **IPP Educational Session – Virtual | January 2024:** OEM hosted a 90-minute education seminar to provide participants guidance and resources to support jurisdictional internal updates or development. The educational seminar was hosted virtually and recorded. Linked is the recording from our [January 2024 Education Session](#) and [January 2025 Education Session](#).

Phase 2 | Regional & State Government Integrated Preparedness Planning Workshops (IPPWs) (February-March 2025)

The regional and state government IPPWs built off Phase 1 to present the findings to workshop participants. All IPPWs were in-person only participation and only included a virtual option due to weather impacting travel. The intended collaborative discussion and development of the plan is best achieved through in person attendance.

- **Regional IPPW Intended Audience:** Primary audience was County and Tribal emergency management agencies, as internal IPPWs should be focused on data collection and gap analysis internal to a jurisdiction. State Government partners with local/tribal input were able to attend IPPWs for awareness, however input for the 1–3-year forecast came through the State OERS IPPW.
- **OERS IPPW Intended Audience:** Primary audience was the OERS Council members and partners. The OERS IPPW did not have a limitation on the intended audience within specific OERS Council agencies. OEM encouraged OERS Council members to have individuals attend that can speak to the organizational planning, equipment, training, and exercise forecasts/needs during the IPPW.

IPPW 2025 Schedule

Region	Date	Location	Type
OEM	February 3	OEM Offices	In-Person
Willamette	February 5	Tangent	In-Person
Eastern	February 18	John Day	In-Person
Cascades	February 20	Prineville	In-Person
Portland Metro	February 27	Portland	In-Person
Southwest	March 10	Roseburg	In-Person
Northwest	March 12	Tillamook	In-Person
OERS	March 27	OEM Offices	In-Person

Phase 3 | Data Collation & IPP Draft (March-April 2025)

OEM aggregated each of the regional forecasts confirmed during Phase 2 and developed a draft 2025 State of Oregon IPP Version 1.3 (V1.3). This document was shared with all IPP participants prior to a Virtual Statewide IPPW hosted in June 2025.

Phase 4 | Draft Statewide IPPW & IPP Finalization (April-May 2025)

OEM hosted a 2-hour Statewide IPPW virtually to formally present the draft IPP V1.3 to all IPP participants, requesting additional feedback on anticipated:

- Planning activities and special event expectations,
- Equipment needs and projects,
- Training vision and requests, and
- Exercise event vision.

OEM then incorporated feedback to the final State IPP V1.3 for approval.

Phase 5 | IPP Rollout & 2026 Vision (June 2025)

OEM distributed IPP V1.3 in June 2025 to all local, tribal, and state, and federal partners. This distribution came with the 2025 process lessons learned, 2026 process expectations, and schedule support IPP participants prepare for their participation in the coming effort.

2026 Update Process – V2.0

Updated Preparedness Priorities

The Emergency Preparedness Advisory Council (EPAC) has established a Subcommittee to identify Oregon's Preparedness Priorities for the 2026–2028 cycle. This subcommittee will set the priorities to guide strategic planning efforts that enhance statewide resilience and readiness across all mission areas:

- Protection
- Prevention
- Mitigation
- Response
- Recovery

The priorities will be informed by community-wide data collection and analysis, including:

- The Oregon Capability Assessment
- The State of the State Report
- Input from the Continuous Improvement Workgroup

The subcommittee's work will address capabilities through the full spectrum of preparedness components:

- Planning
- Organization
- Equipment
- Training
- Exercise

By incorporating diverse input from the whole community—including local, tribal, state, federal, non-profit, and private sector stakeholders—the subcommittee aims to develop actionable and inclusive preparedness priorities that reflect Oregon's unique risks, needs, and opportunities.

2026 Process Overview

2026 IPP Update Process will develop V2.0 and will follow a similar phased approach to 2025. The process priority areas for 2026 are outlined below and intended to progress the IPP effort following lessons learned from recent IPP efforts.

- A. Utilizing Updated Preparedness Priorities to Develop 3-Year Vision: The 2026 IPP Process provides all jurisdictions with the opportunity to re-evaluate upcoming preparedness activities based on the new Preparedness Priorities. Some preparedness activities are critical to a jurisdiction's own strategic vision, while other activities may be influenced by the new Preparedness Priorities. Therefore the 2026 effort will provide space to consider which preparedness activities for the next 3-year period to support collective growth within the Preparedness Priorities.
- B. Organizational-Jurisdictional IPPW Support: The 2025 process offered limited support to local and tribal partners in hosting jurisdictional IPPWs through template resources and technical assistance upon request. This 2026 process will work to offer more direct technical assistance, capability strength and gap analysis, and identifying community-specific needs. The more organizations and jurisdictions that host an internal IPPW, the more effective the regional

IPPWs. This effort will provide additional guidance and direct support to County and Tribal Emergency Management agencies.

- C. Updated Tools: Utilizing this three-year cycle, the OEM Integrated Preparedness Planning Team (IPPT) will update tools to support participant data submission and data interaction.

Development Phases

2026 IPP Update Process has been slightly adjusted from the past two years. This new timeline includes an earlier project start time (October) and pushes back the Regional IPPWs until April-May, hosting these at the Oregon Prepared Conference. This will provide space from October-March for agencies and jurisdictions to host their own IPPWs and refining their preparedness activity data so the Regional IPPWs can focus more on deconfliction and scheduling rather than data collection.

Phase	Scope	Schedule
Phase 1	IPPW Education & Guidance	October - December '25
Phase 2	Internal IPPWs	November '25 - April '26
Phase 3	Data Collation & IPP Draft	February - May '26
Phase 4	Regional Government IPPWs	March - April '26
Phase 5	Statewide IPPW & IPP Finalization	June '26
Phase 6	IPP Rollout & 2027 Expectations	June '26

PREPAREDNESS ACTIVITY CONSIDERATIONS

Threats, Hazards and Risks

Oregon faces several threats, hazards and risks, as listed in the Hazard Categories section in the State of Oregon Emergency Operations Plan (EOP). The primary threats, hazards and risks that informed the current preparedness priorities were the capabilities with significant gaps for either a Cascadia Subduction Zone earthquake and tsunami, cyber-attack or explosive devices incident.

Capability Assessments

The *State of the State Capability Assessment* is an annual assessment of Oregon counties, select cities, Tribal Nations and state agencies. Information collected in this assessment is used to complete the annual Federal Emergency Management Agency (FEMA) *Threat and Hazard Identification and Risk Assessment* (THIRA) and *Stakeholder Preparedness Review* (SPR). The results of this assessment help identify the progress of emergency management initiatives and support the prioritization of future Planning, Organization, Equipment, Training, and Exercise (POETE) efforts. This includes informing the Integrated Preparedness Plan and workshops, setting grant priorities and investment justifications, and shaping statewide preparedness priorities.

The capabilities are assessed through five categories: Planning, Organization, Equipment, Training and Exercise (POETE) for capability lost, sustained or built, and to determine if an overall gap remained in the core capability. Overall gaps indicate that despite efforts and resources, there's still a challenge in fully performing the core capability as needed based on Oregon's potential threats and hazards. Following the identification of gaps, strategies to address those gaps were identified.

Core capabilities are further broken down into their component functional areas and ranked within the POETE to highlight which areas had the highest and lowest capacity. Functional area rankings were based on a 0-5 scale rubric, with 0 indicating no capacity and 5 indicating the highest capacity. Core capabilities rated as high by a majority of respondents were selected as the highest priorities overall for Oregon.

The compiled and analyzed data from the Capability Assessment is used to create the annual State of the State Report. Based on the State of the State Report, THIRA/SPR and the National Exercise Program Priorities, the top eight priorities with gaps were chosen to focus on during this IPP cycle.

During the Integrated Preparedness Plan workshops held regionally across the state, local jurisdictions and Tribal Nations used their capability assessment data to identify gaps and needs. This information was used to prioritize plans, training, and exercises for the next 12–24 months aimed at closing those gaps and addressing identified needs.

PREPAREDNESS PRIORITY PROGRESSION

Based on the above-mentioned considerations, Oregon determined the following priorities will be the focus for this multi-year preparedness cycle:



Continuity of Operations



Fire Management & Suppression



Mass Care Services



Operational Communications



Operational Coordination*



Planning*



Public Health, Healthcare and EMS*



Public Information and Warning *

The table below outlines the progression of the statewide average capability scores within this current IPP cycle for each Preparedness Priority:

	2022	2023	2024	Progress
Continuity of Operations	2.7	2.9	2.8	+0.1
Fire Management & Suppression	2.8	2.9	3.5	+0.7
Mass Care Services	2.3	2.5	2.5	+0.2
Operational Communications	2.5	2.8	2.8	+0.3
Operational Coordination	3.1	3.3	3.2	+0.1
Planning	2.5	2.9	2.8	+0.3
Public Health, Healthcare and EMS	2.6	2.6	2.7	+0.1
Public Information and Warning	3.1	3.2	3.2	+0.1

The following pages provide additional data and context to the progression within each Preparedness Priority and outline the anticipated preparedness activities that will support them. The graphics below are color coded based on the percentage of preparedness activities in that priority area: 0-5% is red, 5-10% is yellow, 10% and up is red, and anything denoted in grey is a unique circumstance explained in the relevant section.

Preparedness Priorities POETE Outlook

Planning

The plans listed and referenced in this IPP capture are slated to be created or updated over the next 12-36 months across the state. As the IPP process becomes more routine, and additional partners participate, a more accurate representation of plans created or updated will be made available.

- A. Breakdown of Plans by Preparedness Priority: The data below demonstrates where jurisdictions and organizations across the state are working on plans within each Preparedness Priority. This data shows additional plans should be considered in the following priority areas in the red.

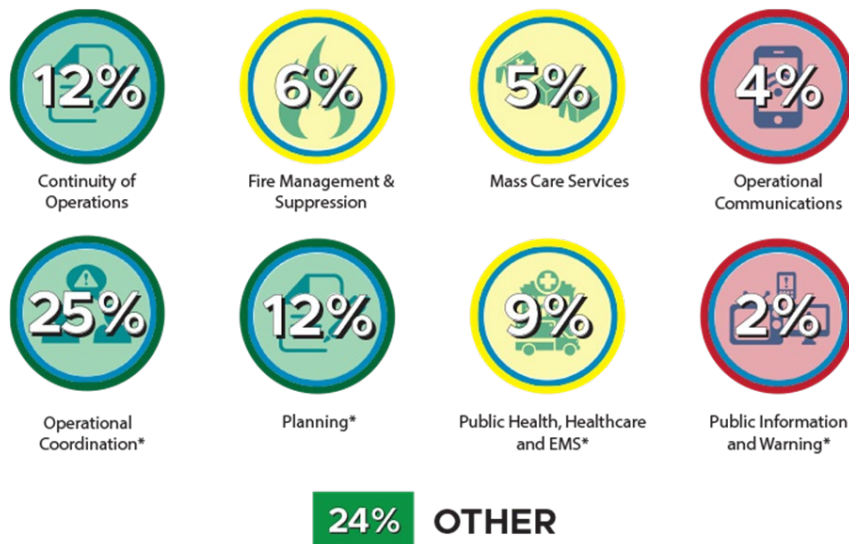


Image 1 Statewide Plans Breakdown by Preparedness Priority

Organization

Organization is not currently a component of the State of Oregon IPP Process.

Equipment

Equipment was new to the IPP effort in 2025 and will have more detailed data and trends in the IPP V2.0.

Training

The training deliveries listed and referenced in this IPP product captures training deliveries that are scheduled or planned over the next 12-36 months across the state. As the IPP process becomes more routine, and additional partners participate, a more accurate representation of trainings will be made available.

A. Breakdown of Training Deliveries by Preparedness Priority: The data below demonstrates where trainings held across the state fall by each Preparedness Priority. This data shows additional training deliveries should be considered in the following Priority areas:

- **Mass Care Services** – This area has the lowest capability score of identified priorities, making this perhaps the most critical training gap at only 2% of the all trainings having a primary focus in mass care.
- **Continuity of Operations** – Only 1% of planned trainings focus on COOP, a large deviation from the 12% of plans that focus on it.
- **Public Health, Healthcare, and EMS** – Only 1% of planned trainings focus on Public Health and Healthcare, compared to the 9% of plans focused on this priority area.
- **Fire Management & Suppression** – This area does not reflect the reality of the training being hosted because much of the fire management training is not handled by emergency managers and did not make it into the data.

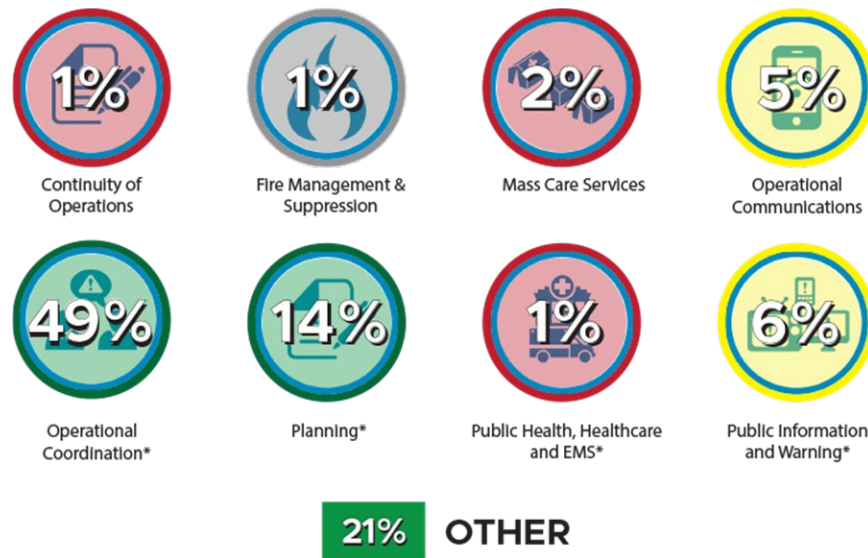


Image 2 Statewide Training Breakdown by Preparedness Priority

B. Breakdown of Training Deliveries by Course Type: The training deliveries planned over the next 12-36 months are broken down into four major categories: “G” courses hosted by OEM, “L” courses hosted by FEMA’s National Disaster Emergency Management University (NDEMU), “AWR”, “MGT”, and “PER” courses hosted by FEMA National Training & Exercise Division (NTED) Training Partner Program (TPP), and “Miscellaneous” training that acts as a catchall for any training that doesn’t fall neatly into the previous categories. The OEM Training Program plays an active role in the coordination and approval of all G, L, AWR, MGT, and PER course deliveries in Oregon. These categories are further broken down into sub-categories that are grouped based on the content of the courses.

This data demonstrates a good balance of courses with roughly 40% being managed internally by agencies, 34% managed by OEM, and 26% relying on FEMA's NDEMU or federal training consortium partners.

Total Count	Sub-Category Count	Course Type
93		OEM Managed (G) Courses
	51	Incident Command System Courses (G0191, G0300, G0400, G0402)
	32	Emergency Operations Center Courses (G2300, G2302, G2304, G2308)
	10	Other Courses (G0108, G0142, G0205, G0288, G0318, G0428)
52		NDEMU Managed (L) Courses
	24	NIMS ICS All-Hazards Position Specific Courses (L0950-L0973)
	16	Basic Academy Courses (L0101, L0102, L0103, L0105, L0146)
	12	Other Courses (L0050, L0131, L0139, L0141, L0388, L0449, L0705, L0708, L1301, L1302)
17		NTED TPP Managed Courses
	5	Awareness Level (AWR-213, AWR-356, AWR-371, AWR-372, AWR-387)
	6	Management Level (MGT-312, MGT-346, MGT-347, MGT-418, MGT-439)
	6	Performance Level (PER-334, PER-353, PER-375, PER-389, PER-403)
118		Miscellaneous Courses
	10	Incident Management Team (IMT) Training (O0305, Internal trainings)
	21	Community & Volunteer Training (AuxComm, B2WR, CERT, SAR, etc.)
	27	Comms & Software Training (COMT, Everbridge, Genasys, OpsCenter, etc.)
	60	Other Training (Active Threat, Misc. EOC, Finance, HazMat, Mass Care, etc.)
278	278	Total* Trainings

*This is the total number of unique courses listed per jurisdiction in the Multi-Year Schedule of Preparedness Activities, in some cases an agency is planning to host multiple deliveries of a specific course, but for the sake of this document it is only counted once.

Exercise

The exercises listed and referenced in this IPP capture only a fraction of the likely events upcoming in Oregon. As the IPP process becomes more routine, and additional partners participate, a more accurate representation of exercises will be made available.

A. Breakdown of Exercise Events by Preparedness Priority: The data below demonstrates where statewide organizations anticipate hosting exercises within each Preparedness Priority. This data shows additional exercise events should be considered in the following Priority areas:

- **Public Information & Warning** – Only 2% of exercises noted this focus, agencies and jurisdictions should consider adding public information-related objectives to exercise events.
- **Continuity of Operations** – 12% of the submitted Planning Activities are COOP-focused, however we see only 6% of exercises focus on the topic. With so many agencies/jurisdictions writing COOP Plans, exercise opportunities should be sought out following the completion or update.
- **Planning** – Due to the nature of the planning core capability, there are no exercises based around it.

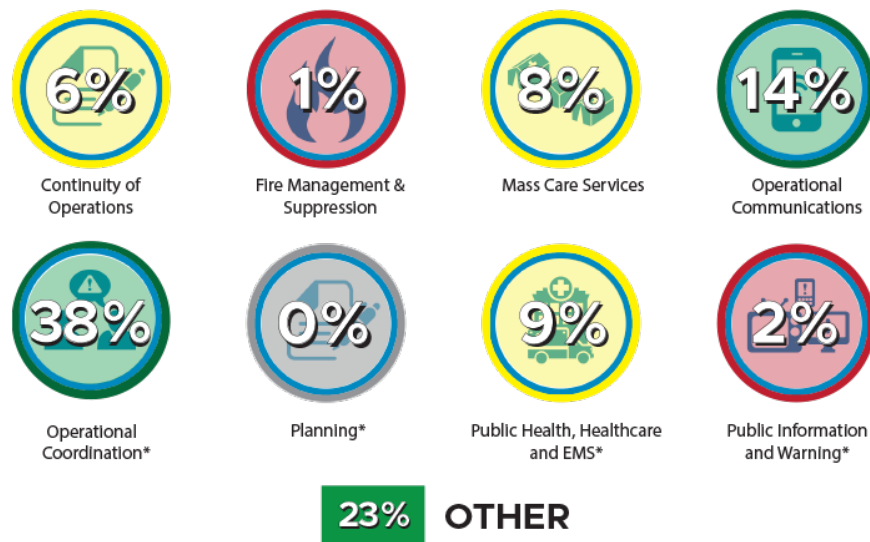


Image 3 Statewide Exercise Breakdown by Preparedness Priority

B. Breakdown of Exercise Events by Exercise Type: This data demonstrates mostly an even split between the number of discussion- and operations-based exercises. To support a progressive exercise approach, OEM encourages a heavier emphasis on discussion-based exercises to ensure individuals and organizations are effectively preparing for larger and more complex exercise events. This data demonstrates space for growth within:

- **Seminars:** Offering seminar events immediately following the completion of a plan, process, or procedure will ensure all included partners are aware of, and knowledgeable about, the product and its expectations.

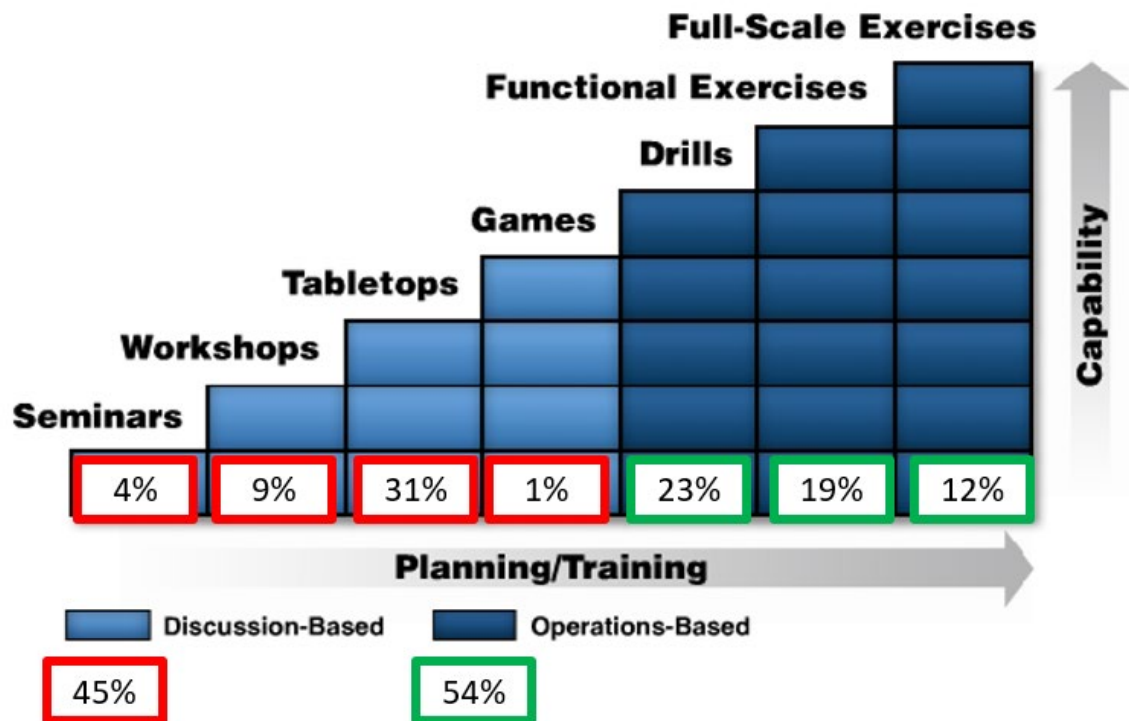


Image 4 Statewide Exercise Data by Type



Continuity of Operations

Continuity of Operations is the ability to provide uninterrupted critical services, essential functions and support – while maintaining organizational viability – before, during and after an event that disrupts normal operations.

Priority Progression | Capability Assessment Data

	2022	2023	2024	Progress
Planning	2.9	3.0	2.6	- 0.3
Equipment	2.7	2.8	2.9	+ 0.2
Training	2.6	2.5	2.4	- 0.2
Exercise	2.6	2.7	2.8	+ 0.2
OVERALL	2.7	2.9	2.8	- 0.1

State of Oregon Jurisdictional Heat Map

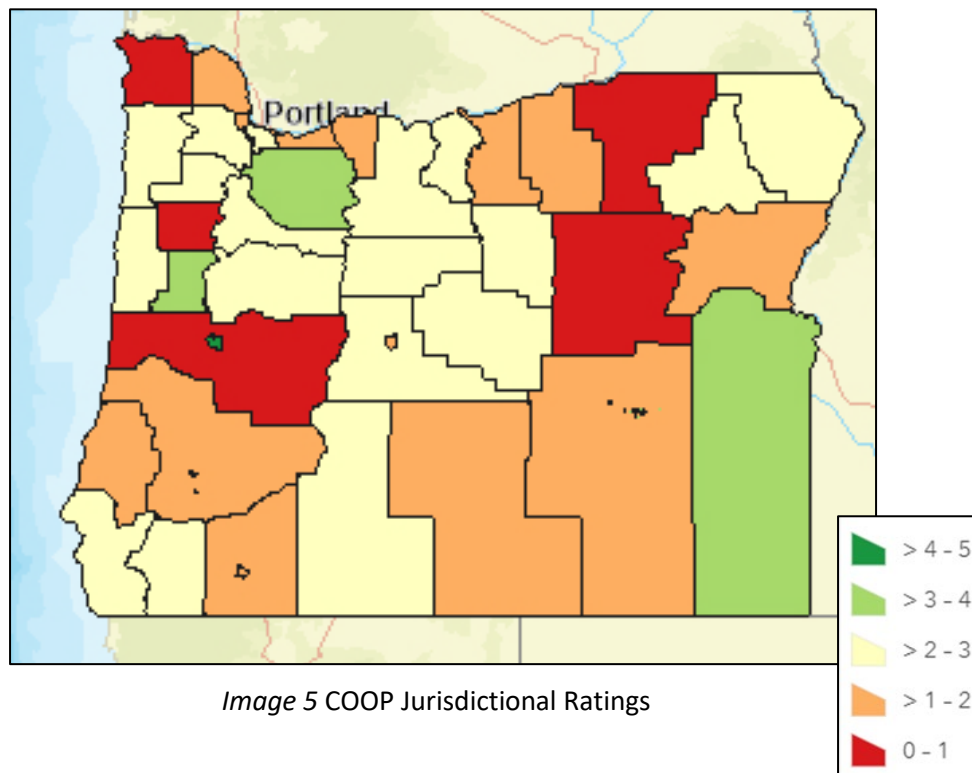


Image 5 COOP Jurisdictional Ratings



Fire Management and Suppression

Fire Management and Suppression provides structural, wildland, and specialized firefighting capabilities to manage and suppress fires of all types, kinds, and complexities while protecting the lives, property, and the environment in the affected area. Due to fire management and suppression being carried out by local fire agencies independently of local emergency managers, much of the ongoing efforts across the state are not effectively captured by this document.

Priority Progression | Capability Assessment Data

	2022	2023	2024	Progress
Planning	2.9	3.0	3.6	+ 0.7
Equipment	2.7	3.0	3.5	+ 0.8
Training	2.9	2.9	3.5	+ 0.6
Exercise	2.8	2.8	3.5	+ 0.7
OVERALL	2.8	2.9	3.5	+ 0.7

State of Oregon Jurisdictional Heat Map

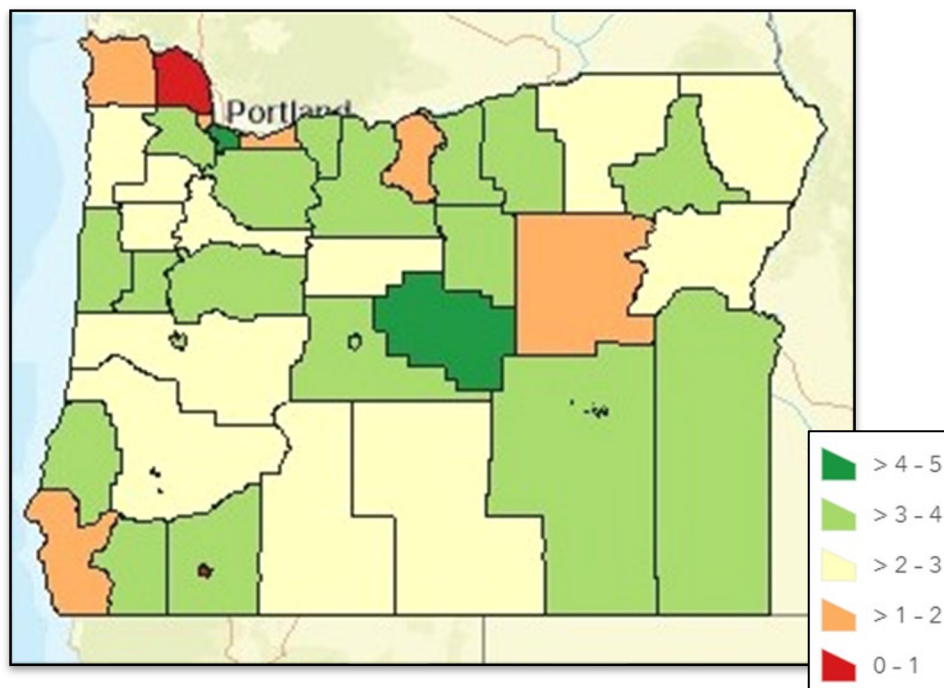


Image 6 Fire Management & Suppression Jurisdictional Ratings



Mass Care Services

Provide life-sustaining and human services to the affected population, including hydration, feeding, sheltering, temporary housing, evacuee support, reunification and distribution of emergency supplies.

Priority Progression | Capability Assessment Data

	2022	2023	2024	Progress
Planning	2.4	2.6	2.4	+/-0.0
Equipment	2.3	2.5	2.5	+0.2
Training	2.2	2.4	2.4	+0.2
Exercise	2.2	2.4	2.5	+0.3
OVERALL	2.3	2.5	2.5	+0.2

State of Oregon Jurisdictional Heat Map

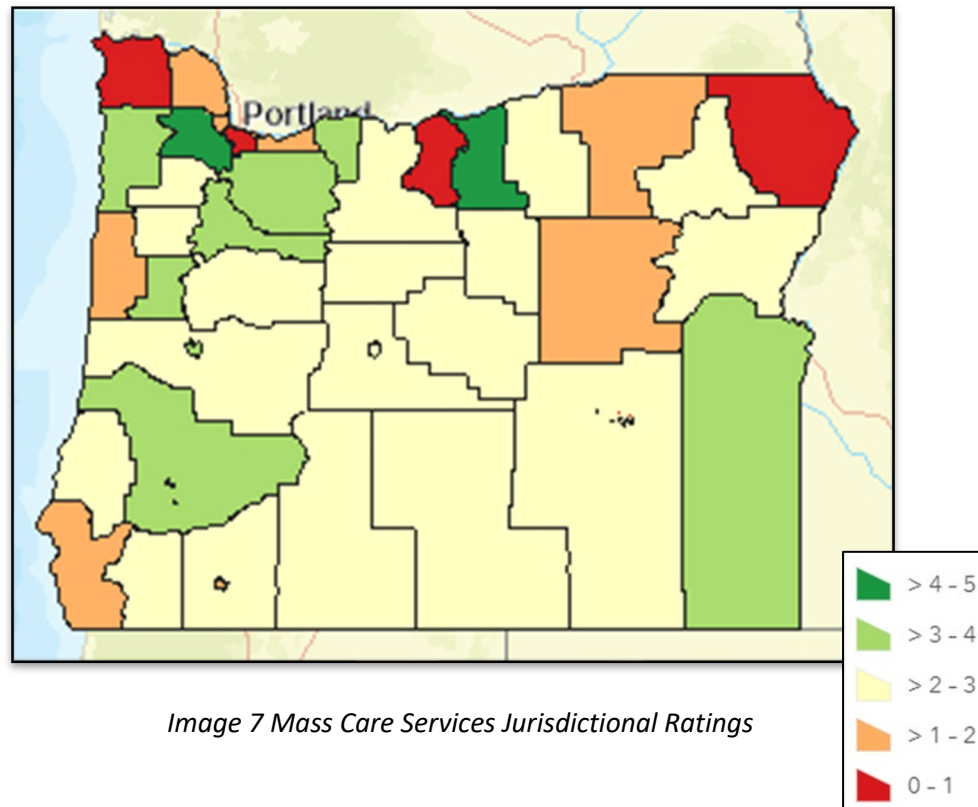


Image 7 Mass Care Services Jurisdictional Ratings



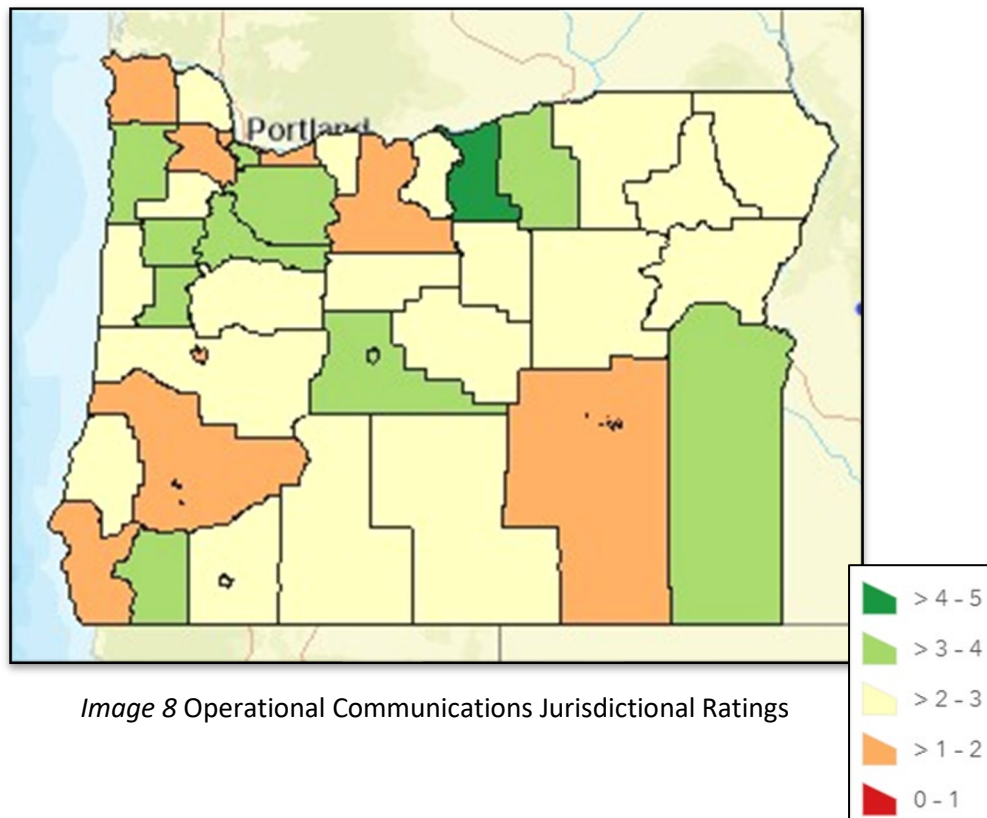
Operational Communications

Ensure the capacity for timely communications in support of security, situational awareness, and operations by all means available, among and between affected communities in the impact area and all response forces.

Priority Progression | Capability Assessment Tool Data

	2022	2023	2024	Progress
Planning	2.6	2.9	2.8	+0.2
Equipment	2.4	2.9	2.8	+0.4
Training	2.4	2.8	2.8	+0.4
Exercise	2.3	2.7	2.8	+0.5
OVERALL	2.5	2.8	2.8	+0.3

State of Oregon Jurisdictional Heat Map





Operational Coordination

Establish and maintain a unified and coordinated operational structure and process that appropriately integrates all critical stakeholders and supports the execution of core capabilities.

Priority Progression | Capability Assessment Tool Data

	2022	2023	2024	Progress
Planning	3.1	3.4	3.3	+0.2
Equipment	3.0	3.2	3.1	+0.1
Training	3.0	3.2	3.1	+0.1
Exercise	3.1	3.2	3.1	+/-0.0
OVERALL	3.1	3.3	3.2	+0.1

State of Oregon Jurisdictional Heat Map

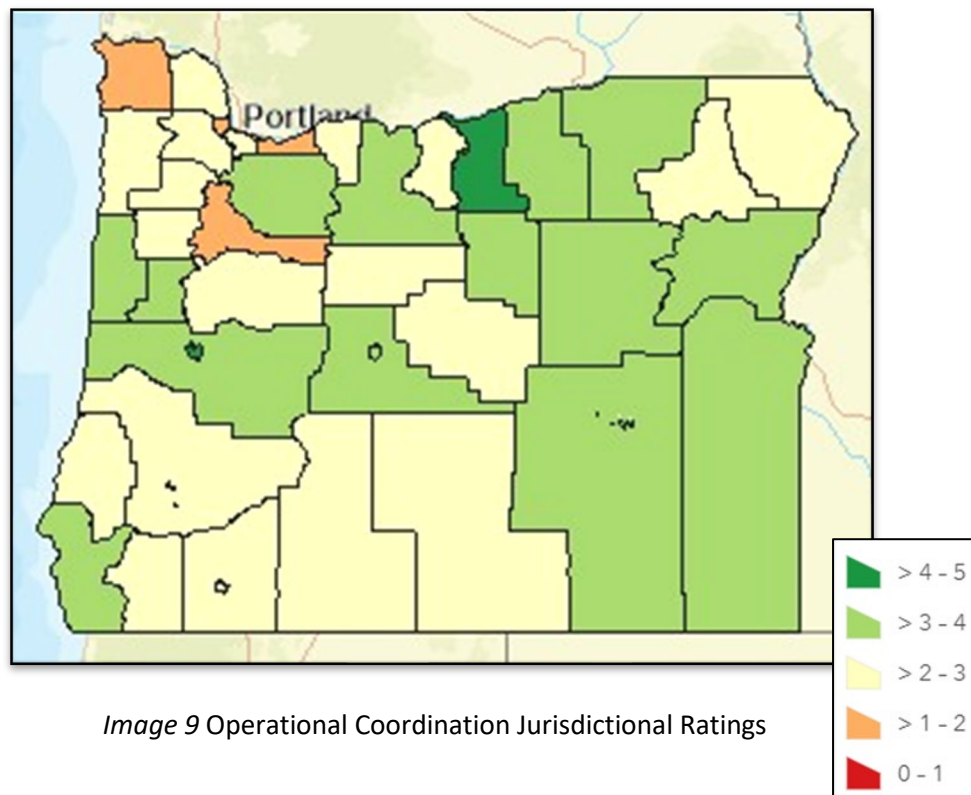


Image 9 Operational Coordination Jurisdictional Ratings



Planning

Conduct a systematic process engaging the whole community as appropriate in the development of executable strategic, operational and tactical-level approaches to meet defined objectives.

Priority Progression | Capability Assessment Tool Data

	2022	2023	2024	Progress
Planning	2.9	3.0	2.7	-0.2
Equipment	2.8	3.0	3.0	+0.2
Training	2.7	2.7	2.6	-0.1
Exercise	2.6	2.7	2.9	+ 0.3
OVERALL	2.5	2.9	2.8	+0.3

State of Oregon Jurisdictional Heat Map

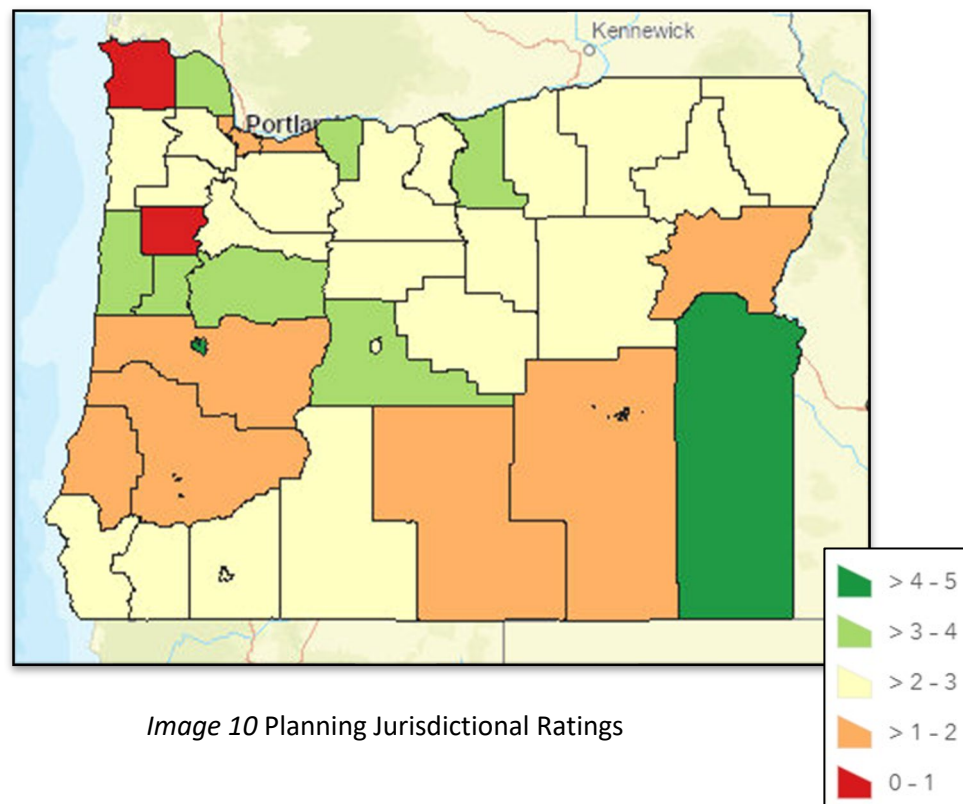


Image 10 Planning Jurisdictional Ratings



Public Health, Healthcare, and EMS

Public Health, Healthcare and EMS provide lifesaving medical treatment via Emergency Medical Services and related operations and avoid additional disease and injury by providing targeted public health, medical and behavioral health support and products to all affected populations.

Priority Progression | Capability Assessment Tool Data

	2022	2023	2024	Progress
Planning	2.6	2.7	2.7	+0.1
Equipment	2.5	2.6	2.7	+0.2
Training	2.6	2.7	2.6	+/-0.0
Exercise	2.5	2.5	2.6	+ 0.1
OVERALL	2.6	2.6	2.7	+ 0.1

State of Oregon Jurisdictional Heat Map

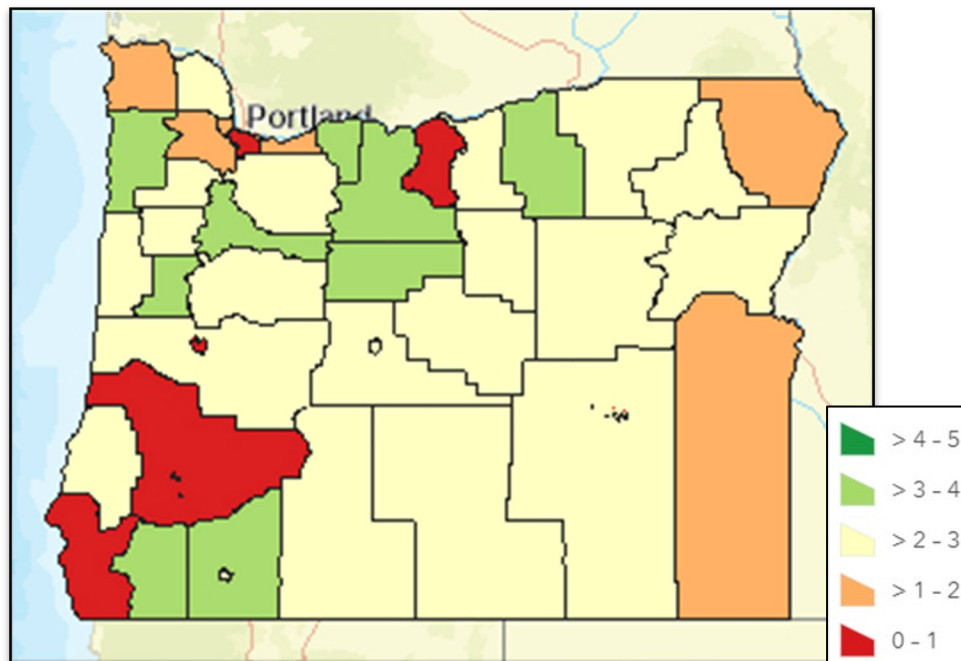


Image 11 Public Health, Healthcare, and EMS Jurisdictional Ratings



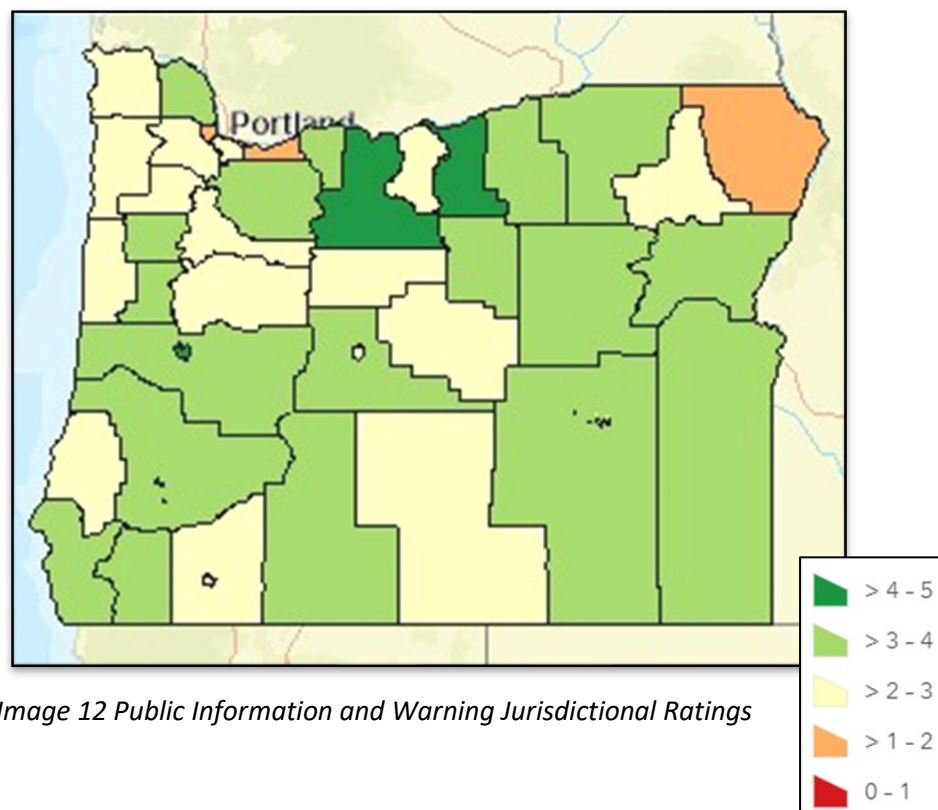
Public Information and Warning

Public Information and Warning delivers prompt, reliable and actionable information to the whole community using clear, consistent, accessible, and culturally and linguistically appropriate methods to effectively relay information regarding any threat or hazard, as well as the actions being taken and the assistance being made available, as appropriate.

Priority Progression | Capability Assessment Tool Data

	2022	2023	2024	Progress
Planning	3.1	3.1	3.1	+/-0.0
Equipment	3.1	3.3	3.3	+0.2
Training	3.1	3.2	3.2	+0.1
Exercise	3.0	3.2	3.2	+0.2
OVERALL	3.1	3.2	3.2	+0.1

State of Oregon Jurisdictional Heat Map



DOCUMENT MAINTENANCE

This product is updated on an annual basis by the OEM IPP team via regional, state government, and internal Oregon Department of Emergency Management IPPWs. Progressing into a new three-year cycle will see a new Version – 2.0 – of this product replace the original 1.0 that addressed the 2023-2026 Preparedness Priorities.

NEXT STEPS AND IMPLEMENTATION

Local-Tribal Governments

The following recommendations can help local and tribal governments interact with the POETE data on a routine basis to act as a reminder of planned activities, an opportunity to coordinate and collaborate on upcoming activities, and a space to keep the information/data relevant:

- A. **OEM Regional Meeting Agenda Item | Quarterly:** As the OEM Regional Coordinators host their region meetings, a revision of the past and upcoming data points can be integrated into this space.
 - A reminder of what has happened can support the removal or items, or addition of future items to build off the previous.
 - A review of upcoming data points can be that space to ensure any/all assistance is requested, a space to confirm or adjust upcoming activities, and/or an opportunity to request additional information from each other.
- B. **Schedule Local or Tribal Integrated Preparedness Planning Workshop (IPPW) | Winter Months:** Hosting internal IPPWs will help refine upcoming emergency management program preparedness activities with your peers. The OEM IPPWs are hosted between January and March each year, and utilizing an internal IPPW for your jurisdiction in preparation for that will ensure your data is accurate and updated for the regional discussions.

Oregon Emergency Response System (OERS) Council

- A. **OERS Council Meeting Agenda Item | Quarterly:** On a quarterly basis, the IPP Team will present at the OERS Council to share which preparedness activities have taken place and which are upcoming to support awareness and possible collaboration of events.

Oregon Department of Emergency Management (OEM)

The following recommendations can help OEM interact with the POETE data on a routine basis to act as a reminder of planned activities, an opportunity to assist coordination of upcoming activities, and keep the information updated:

- A. **Internal Review of OEM Activities | Quarterly:** On a quarterly basis, the IPP Team can review the existing data with the OEM Management Team to keep timelines on track, allow for updates to be made, and to inform work to be done.
- B. **OEM Training Review of Data | Quarterly:** On a quarterly basis, the OEM Training team may review the data submitted by all agencies and will work to fulfill the gaps based on the greatest needs and ability to deliver a course. Additionally, the OEM Training Program may compare the number of deliveries of various courses to those identified in the IPP on a quarterly basis to help identify and close additional gaps.

MULTI-YEAR SCHEDULE OF PREPAREDNESS ACTIVITIES

The multi-year schedule of preparedness activities is listed by planning, training and exercise activity. It is then subdivided by Tribes, Counties, and State of Oregon Departments, any entities existing within a county geographically are represented under that county. The schedule indicates the core capability for each activity and type for exercises. The first 12 months of the schedule are broken down by month, then by quarter as further out activities are still in the planning stages.

Activities listed in the schedule are for the identified priorities and are projected during the multi-year cycle. There are many more activities that agencies and jurisdictions conduct to increase their capabilities during the multi-year cycle that may not be captured below.

Training activities are regularly updated. Most current training courses will be available by [signing up](#) to receive training email updates through GovDelivery or by visiting the [State Preparedness Calendar](#) on the OEM website.

Planning

[illegible]

[illegible]

Portland Metro Region	Organization	Core Capability	Jul'25	Aug'25	Sep'25	Oct'25	Nov'25	Dec'25	Jan'26	Feb'26	Mar'26	Apr'26	May'26	Jun'26	Jul-Sept'26	Oct-Dec'26	Jan-Mar'27	Apr-Jun'27	Jul-Dec'27
Clackamas County																			
Climate Adaptation Plan	Clackamas County	Environmental Response/Health and Safety																	
Continuity of Operations (COOP) Plan	Clackamas County	Continuity of Operations																	
Develop PH Emergency Preparedness Plan	Clackamas County	Public Health, Healthcare, and EMS																	
Develop Environmental Health Plan	Clackamas County	Environmental Response/Health and Safety																	
Emergency Operations Plan (EOP)	Clackamas County	Operational Coordination																	
Evacuation Planning Framework	Clackamas County	Operational Coordination																	
Integrated Preparedness Plan (IPP)	Clackamas County	Planning																	
Local Recovery Framework	Clackamas County	Operational Coordination																	
Mass Care & Sheltering Plan	Clackamas County	Mass Care Services																	
Public Health Support Annex 4	Clackamas County	Public Health, Healthcare, and EMS																	
Columbia County																			
Communications Annex	Columbia County	Operational Communications																	
Communiy Wildfire Protection Plan (CWPP)	Columbia County	Fire Management and Suppression																	
Continuity of Operations (COOP) Plan	Columbia County	Continuity of Operations																	
ESF 8 Annex	Columbia County	Public Health, Healthcare, and EMS																	
Integrated Preparedness Plan (IPP)	Columbia County	Operational Coordination																	
Mass Care & Sheltering Plan	Columbia County	Mass Care Services																	
Medical Countermeasures and Dispensing	Columbia County	Public Health, Healthcare, and EMS																	
Natural Hazard Mitigation Plan (NHMP)	Columbia County	Risk and Disaster Resilience Assessment																	
Public Health All Hazard Plan	Columbia County	Public Health, Healthcare, and EMS																	
Public Health Communications Annex	Columbia County	Public Health, Healthcare, and EMS																	
Public Health Coop	Columbia County	Planning																	
Multnomah County																			
Communications Annex	City of Portland	Operational Communications																	
Debris Management Plan	City of Portland	Operational Coordination																	
Emergency Public Information	City of Portland	Public Information and Warning																	
Integrated Preparedness Plan (IPP)	City of Portland	Planning																	
Continuity of Operations (COOP) Plan	Metro	Continuity of Operations																	
Debris Management Plan	Metro	Operational Coordination																	
Emergency Operations Plan (EOP)	Metro	Operational Coordination																	
Emergency Response Plans	Metro	Operational Coordination																	
Regional Solid Waste Emergency Management Response and Recovery Framework	Metro	Operational Coordination																	
All Hazards Catastrophic Incident Framework	Multnomah County	Operational Coordination																	
All Hazards Evacuation Functional Annex	Multnomah County	Operational Coordination																	
Catastrophic Earthquake Annex	Multnomah County	Operational Coordination																	
Children and Youth in Disasters Functional Annex	Multnomah County	Operational Coordination																	
Community Points of Distribution (CPOD) Functional Annex	Multnomah County	Mass Care Services																	
Continuity of Government Annex (to COOP plan)	Multnomah County	Continuity of Operations																	
Continuity of Operations (COOP) Plan	Multnomah County	Continuity of Operations																	
Damage Assessment Plan	Multnomah County	Operational Coordination																	
Debris Management Plan	Multnomah County	Operational Coordination																	

[illegible]

[illegible]

[illegible]

[illegible]

[illegible]

[illegible]

[illegible]

[illegible]

[illegible]

[illegible]

[illegible]

Equipment									
-----------	--	--	--	--	--	--	--	--	--

[illegible]

[illegible]

[illegible]

[illegible]

[illegible]

[illegible]

Training

[illegible]

Cow Creek Band of Umpqua Tribe of Indians

Northwest Region	Organization	Core Capability	Jul'25	Aug'25	Sep'25	Oct'25	Nov'25	Dec'25	Jan'26	Feb'26	Mar'26	Apr'26	May'26	Jun'26	Jul-Sept'26	Oct-Dec'26	Jan-Mar'27	Apr-Jun'27	Jul-Dec'27
------------------	--------------	-----------------	--------	--------	--------	--------	--------	--------	--------	--------	--------	--------	--------	--------	-------------	------------	------------	------------	------------

Clatsop County

[illegible][illegible][illegible]

Yamhill County

[illegible]

[illegible]

[illegible]

[illegible]

[illegible]

[illegible]

[illegible]

[illegible]

[illegible]

[illegible]

[illegible]

Exercise

Federally Recognized Tribes of Oregon	Exercise Type	Core Capability	Jul'25	Aug'25	Sep'25	Oct'25	Nov'25	Dec'25	Jan'26	Feb'26	Mar'26	Apr'26	May'26	Jun'26	Jul-Sept'26	Oct-Dec'26	Jan-Mar'27	Apr-Jun'27	Jul-Dec'27
---------------------------------------	---------------	-----------------	--------	--------	--------	--------	--------	--------	--------	--------	--------	--------	--------	--------	-------------	------------	------------	------------	------------

Confederated Tribes of the Coos, Lower Umpqua, and Siuslaw Indians

[illegible]

Confederated Tribes of the Umatilla Indian Reservation

[illegible]

Cow Creek Band of Umpqua Tribe of Indians									
---	--	--	--	--	--	--	--	--	--

[illegible]

Northwest Region	Exercise Type	Core Capability	Jul'25	Aug'25	Sep'25	Oct'25	Nov'25	Dec'25	Jan'26	Feb'26	Mar'26	Apr'26	May'26	Jun'26	Jul-Sept'26	Oct-Dec'26	Jan-Mar'27	Apr-Jun'27	Jul-Dec'27
------------------	---------------	-----------------	--------	--------	--------	--------	--------	--------	--------	--------	--------	--------	--------	--------	-------------	------------	------------	------------	------------

Clatsop County

[illegible]

Lincoln County

[illegible]

Tillamook County	
1	2
3	4
5	6
7	8
9	10
11	12
13	14
15	16
17	18
19	20
21	22
23	24
25	26
27	28
29	30
31	32
33	34
35	36
37	38
39	40
41	42
43	44
45	46
47	48
49	50
51	52
53	54
55	56
57	58
59	60
61	62
63	64
65	66
67	68
69	70
71	72
73	74
75	76
77	78
79	80
81	82
83	84
85	86
87	88
89	90
91	92
93	94
95	96
97	98
99	100

[illegible]

Yamhill County

[illegible]

[illegible]

[illegible]

[illegible]

[illegible]

[illegible]

[illegible]

[illegible]

[illegible]

[illegible]

[illegible]

[illegible]

[illegible]