



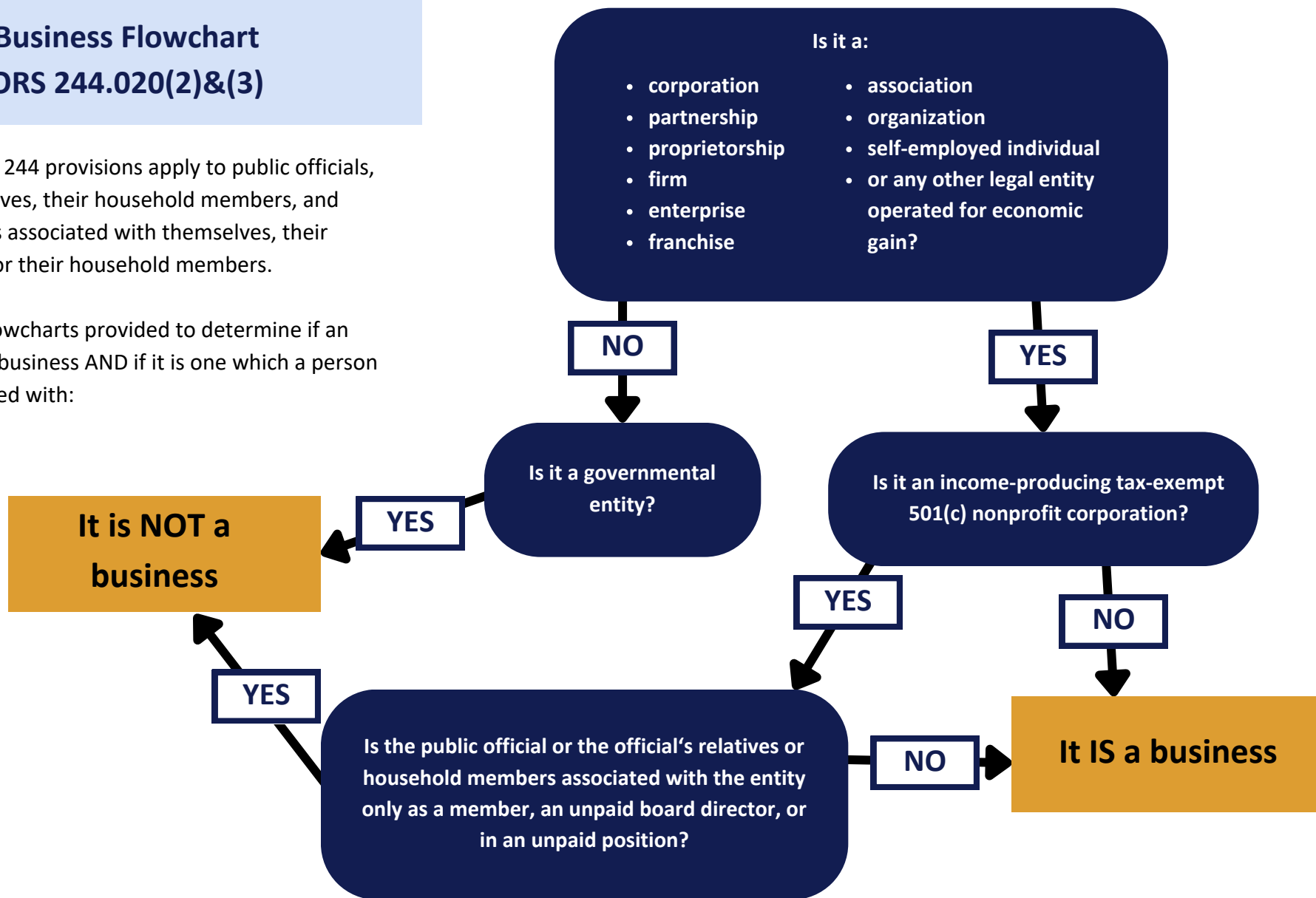
# Oregon Government Ethics Commission

## Business Flowchart ORS 244.020(2)&(3)

# #1 - IS IT A BUSINESS?

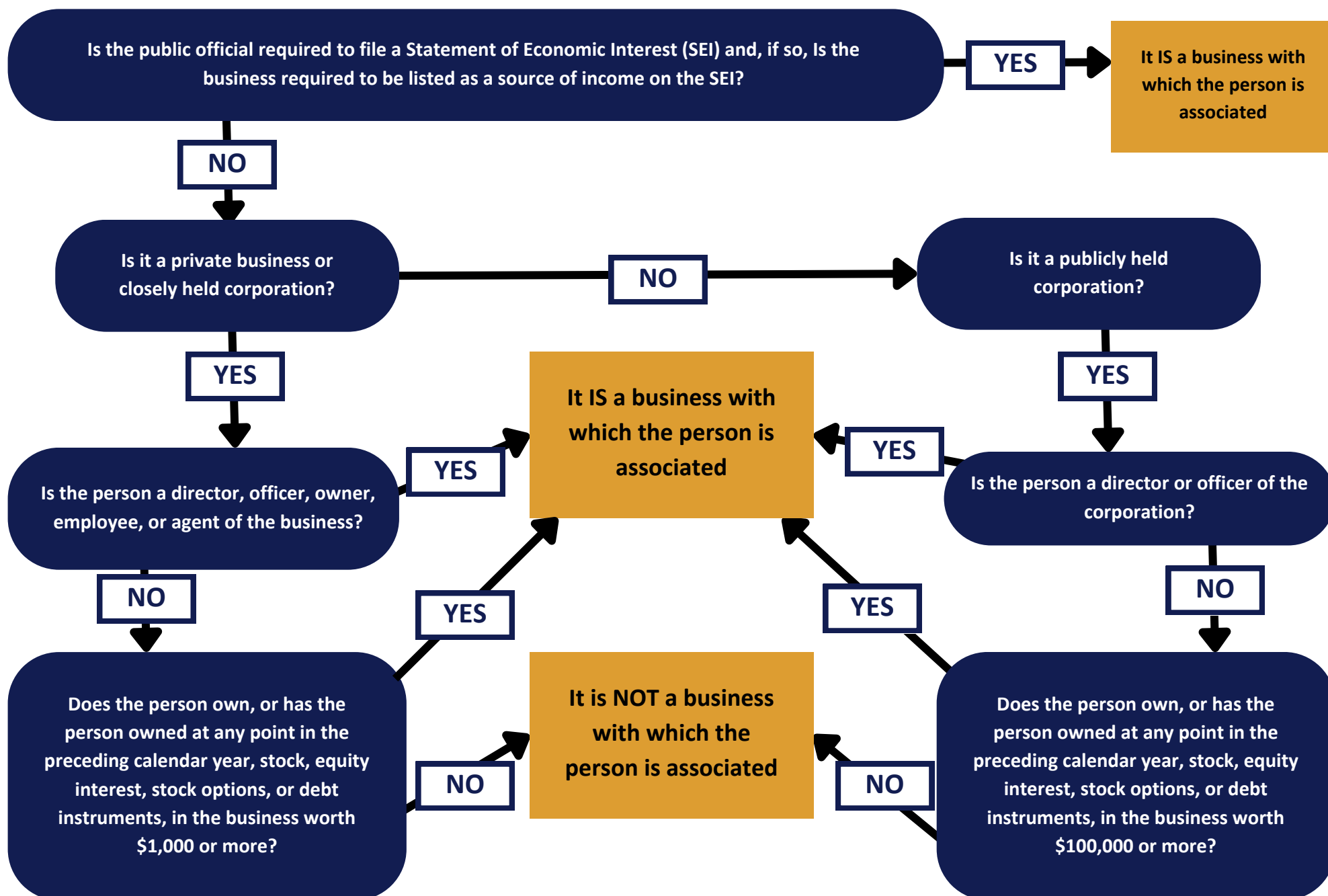
Many ORS 244 provisions apply to public officials, their relatives, their household members, and businesses associated with themselves, their relatives, or their household members.

Use the flowcharts provided to determine if an entity is a business AND if it is one which a person is associated with:



\*This handout should be used as a supplement, not a replacement, for ORS 244\*

# #2 - IS THE BUSINESS ONE WITH WHICH A PERSON IS ASSOCIATED?



\*This handout should be used as a supplement, not a replacement, for ORS 244\*