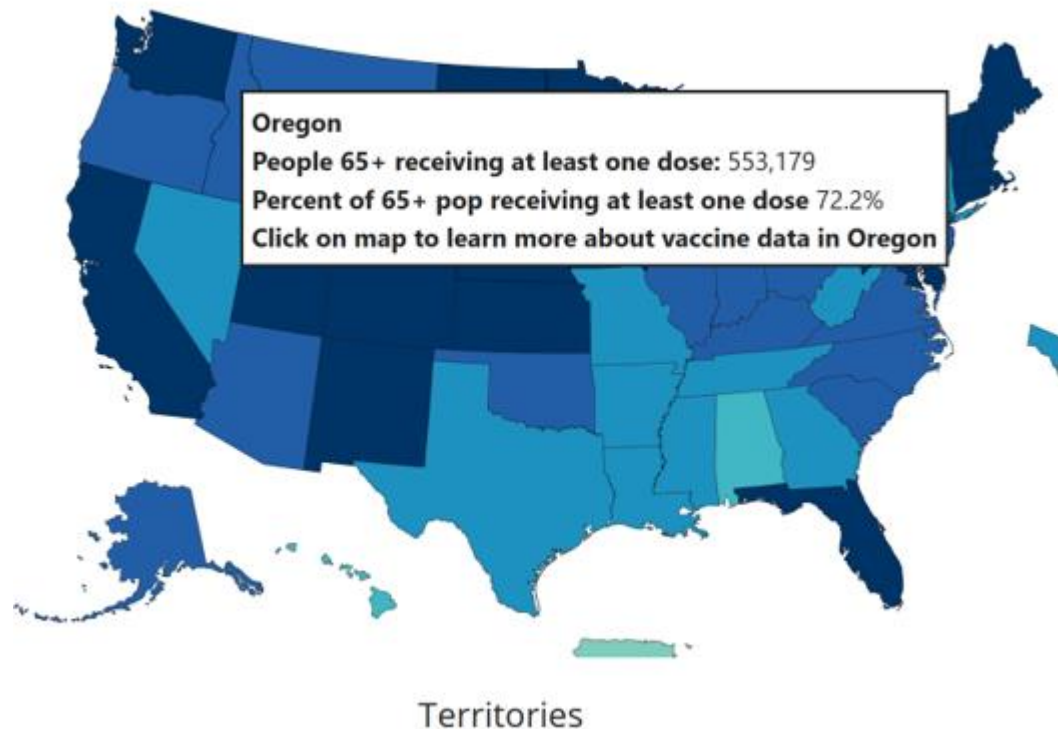


# Oregon vaccinations: Current numbers

Percent of People Receiving at least One Dose Reported to the CDC by State/Territory and for Select Federal Entities for the Population 65 Years of Age and Older



**Number of people vaccinated (at least one dose):**

1,216,455 (28% of total population)

National average: 29%\*

**Total population fully vaccinated (two shots/J&J):**

679,035 (17%)

National average: 16%\*

**Oregon daily average doses administered: 30,302**

**Percentage of all seniors vaccinated: 70%\*\***  
(522,518 total as of April 1)

\*Based on CDC data (March 31, 2021)

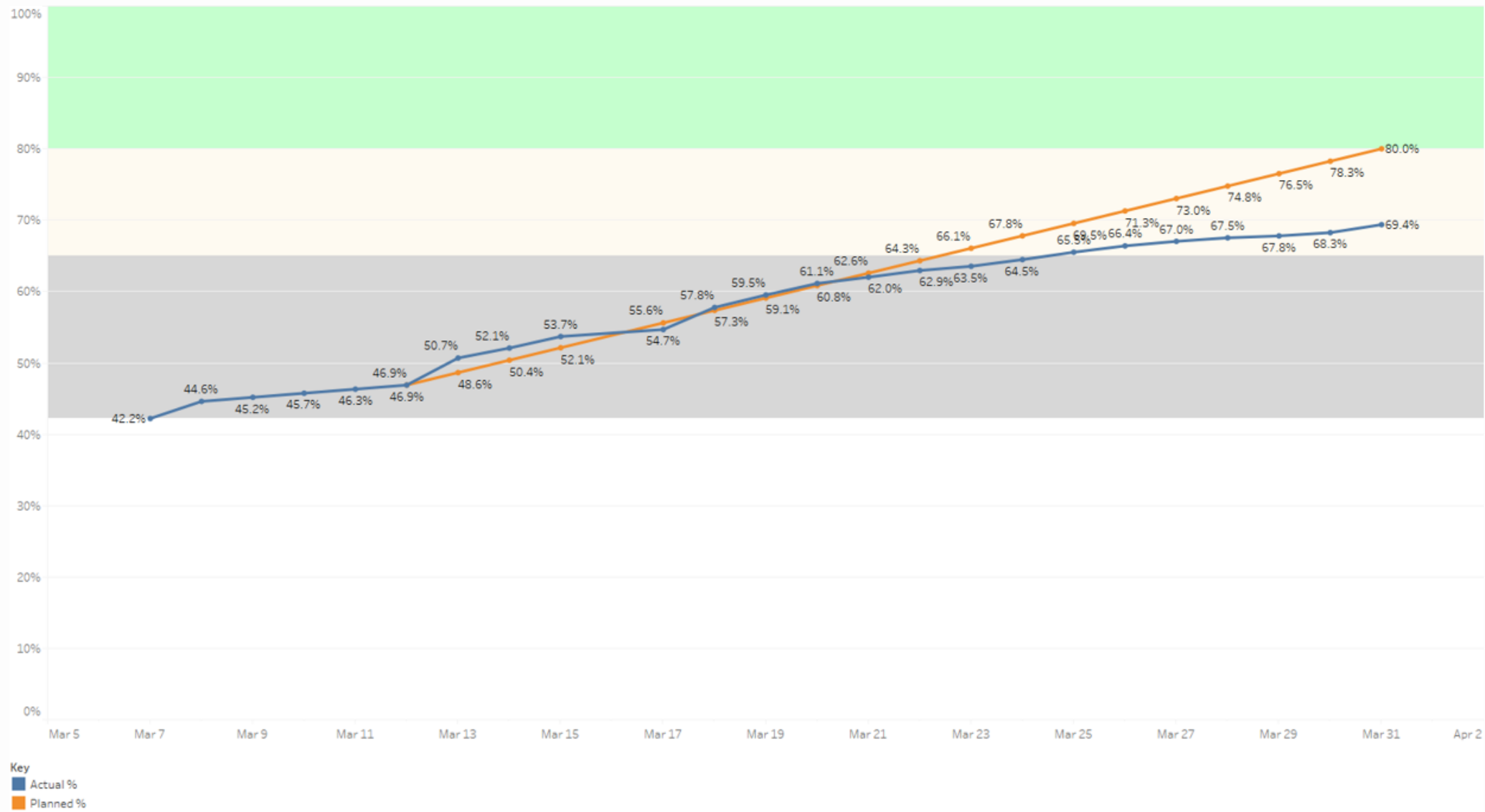
\*\*Based on Oregon data in Alert IIS. CDC data includes vaccinations administered by VA and other federal entities not reported to Alert IIS.

# Vaccines Administered by Age (Data through April 2, 2021)

Age Group	Number Vaccinated	Population Estimate	% of Population Vaccinated
20 to 29	98,138	555,278	18%
30 to 39	141,829	578,856	25%
40 to 49	148,123	543,370	27%
50 to 59	158,513	535,049	30%
60 to 64	96,609	281,592	34%
65 to 69	163,446	257,808	63%
70 to 74	148,469	206,442	72%
75 to 79	98,202	133,653	73%
80+	120,926	167,639	72%

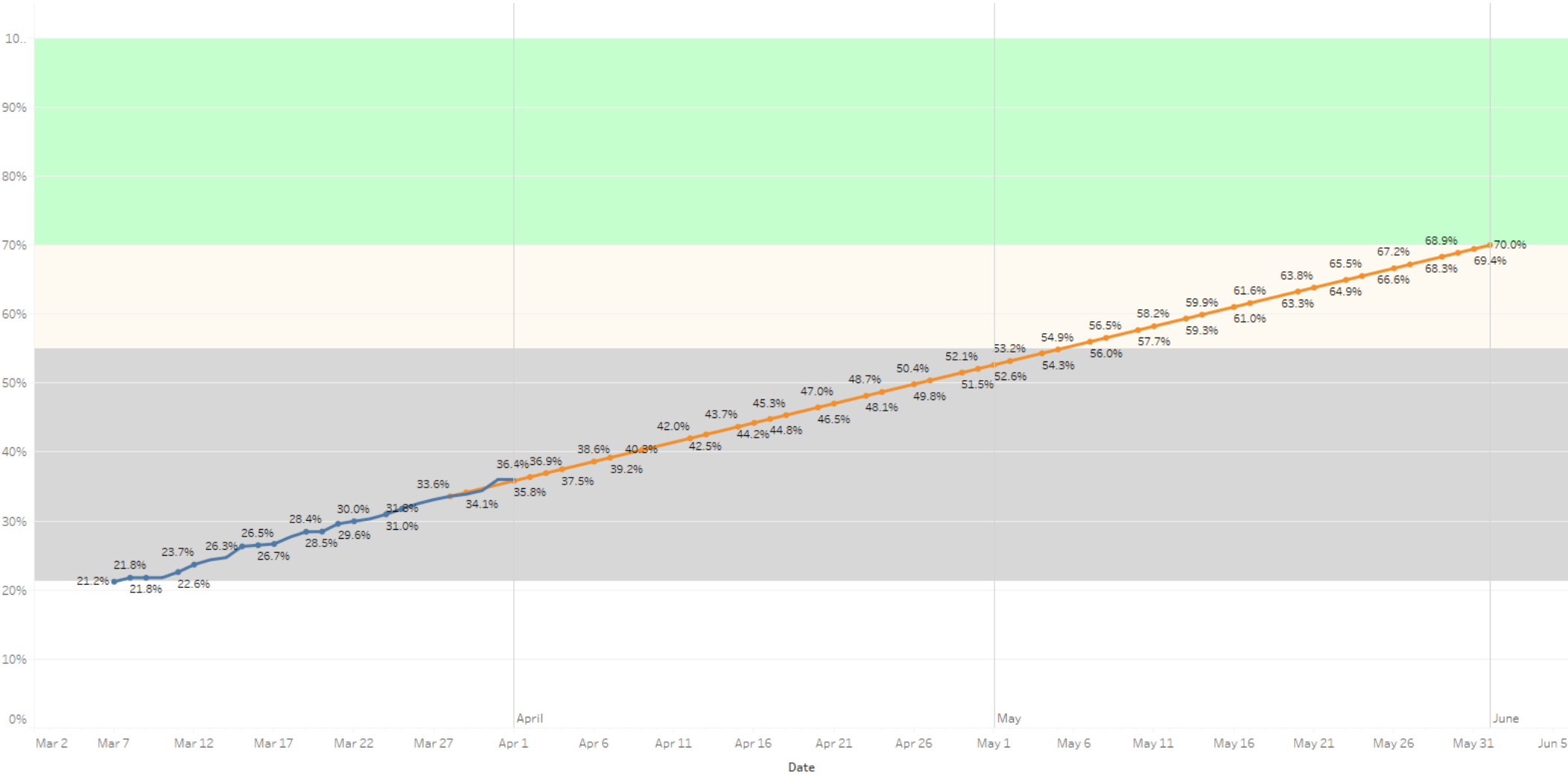
65+ vaccination rate: 70%

# 65+ Vaccination Percentage Trend

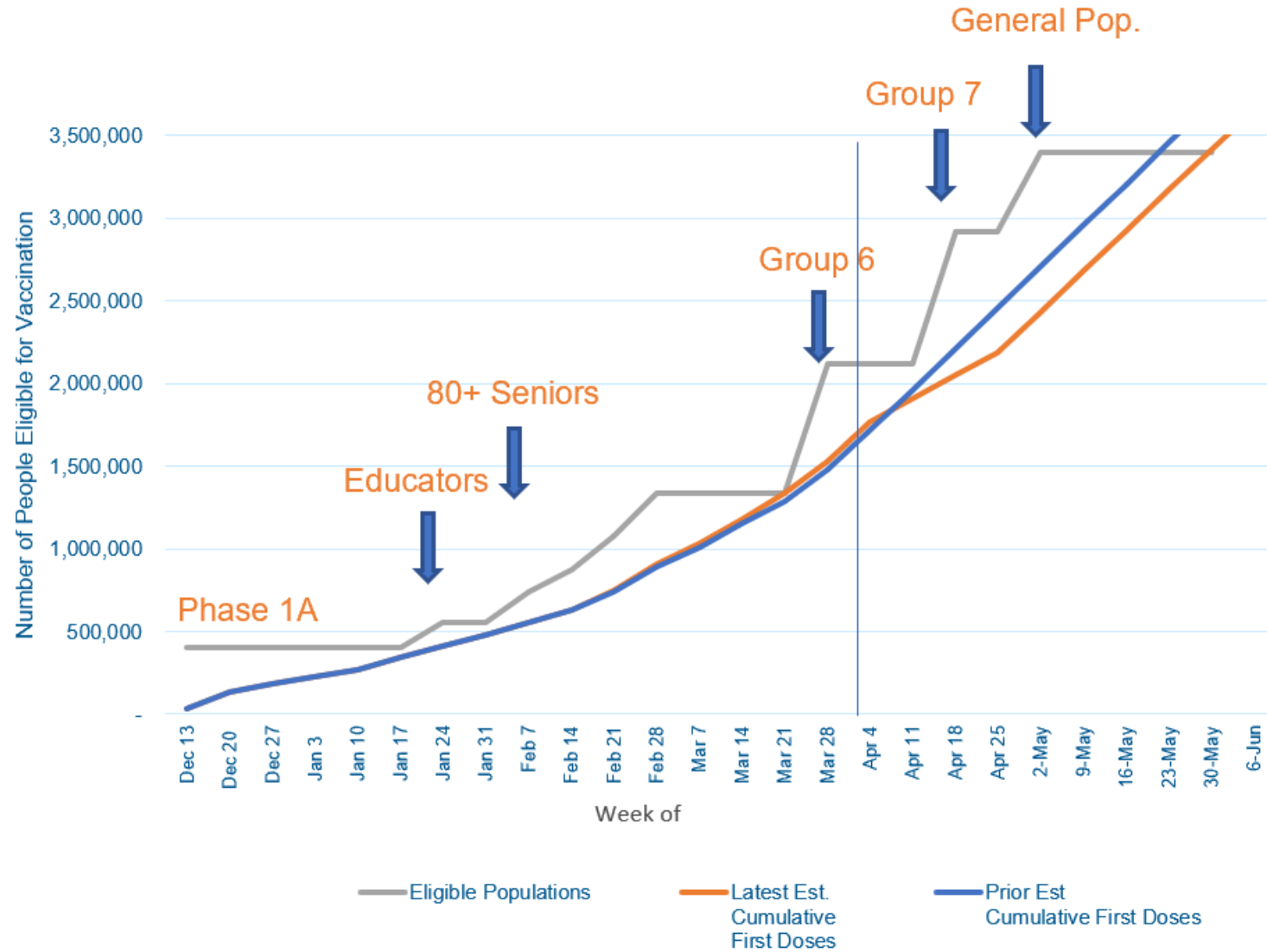


Key  
Actual %  
Planned %

# 20+ Vaccination Percentage Trend



# High Level Forecast (First Dose Supply vs. Eligible Population)



# Updated eligibility: Underlying conditions

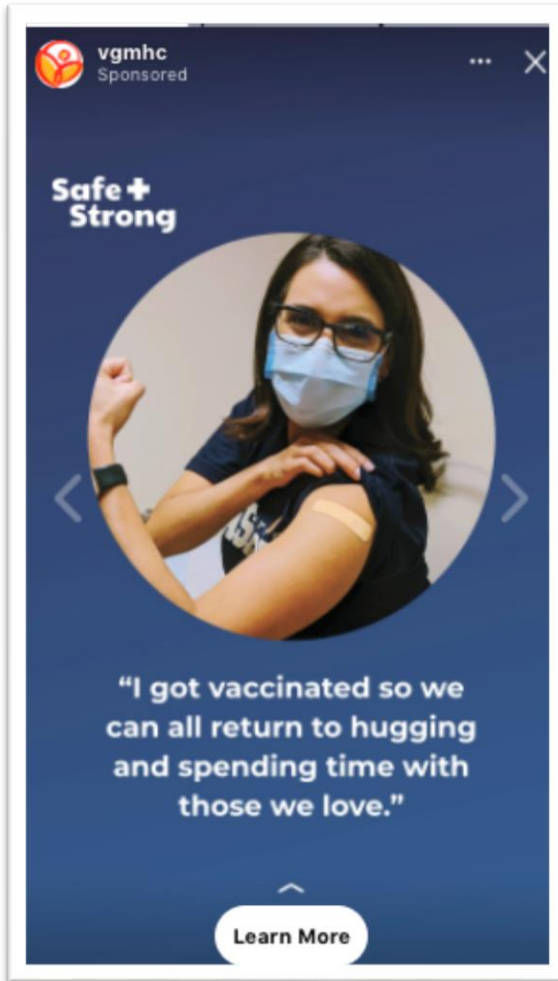
## \* Underlying health conditions with increased risk as defined by the Centers for Disease Control and Prevention (CDC)

- Cancer
- Chronic kidney disease
- Chronic lung diseases, including chronic obstructive pulmonary disease (COPD), asthma (moderate-to-severe), interstitial lung disease, cystic fibrosis, and pulmonary hypertension
- Dementia or other neurological conditions
- Diabetes (type 1 or type 2)
- Down syndrome
- Heart conditions (such as heart failure, coronary artery disease, cardiomyopathies, or hypertension)
- HIV infection
- Immunocompromised state (weakened immune system)
- Liver disease
- Overweight and obesity (defined as body mass index, or BMI, greater than 25 kg/m<sup>2</sup>)
- Pregnancy
- Sickle cell disease or thalassemia
- Smoking, current or former
- Solid organ or blood stem cell transplant
- Stroke or cerebrovascular disease
- Substance use disorder

† This is not an exhaustive list; see <https://www.cdc.gov/vaccines/covid-19/categories-essential-workers.html> for a full list.



# Reaching Oregonians in different ways

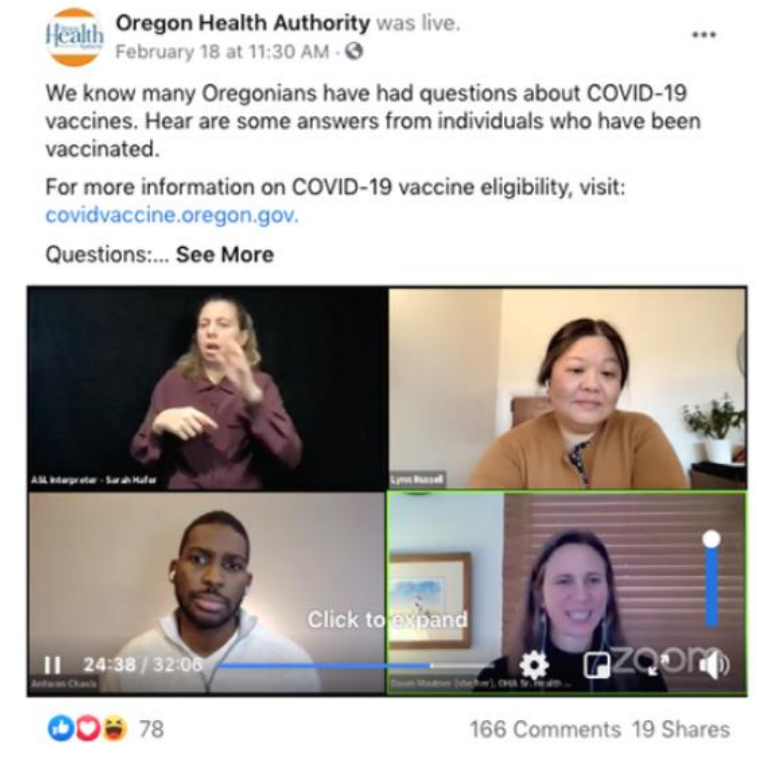


vgmhc Sponsored

Safe + Strong

"I got vaccinated so we can all return to hugging and spending time with those we love."

Learn More



Oregon Health Authority was live. February 18 at 11:30 AM

We know many Oregonians have had questions about COVID-19 vaccines. Hear are some answers from individuals who have been vaccinated.

For more information on COVID-19 vaccine eligibility, visit: [covidvaccine.oregon.gov](https://covidvaccine.oregon.gov).

Questions:... See More

78 166 Comments 19 Shares