

PERMANENTE MEDICINE<sup>®</sup>  
The Permanente Medical Group

# TPMG Executive Offices

Organizational Chart and Portfolio Management

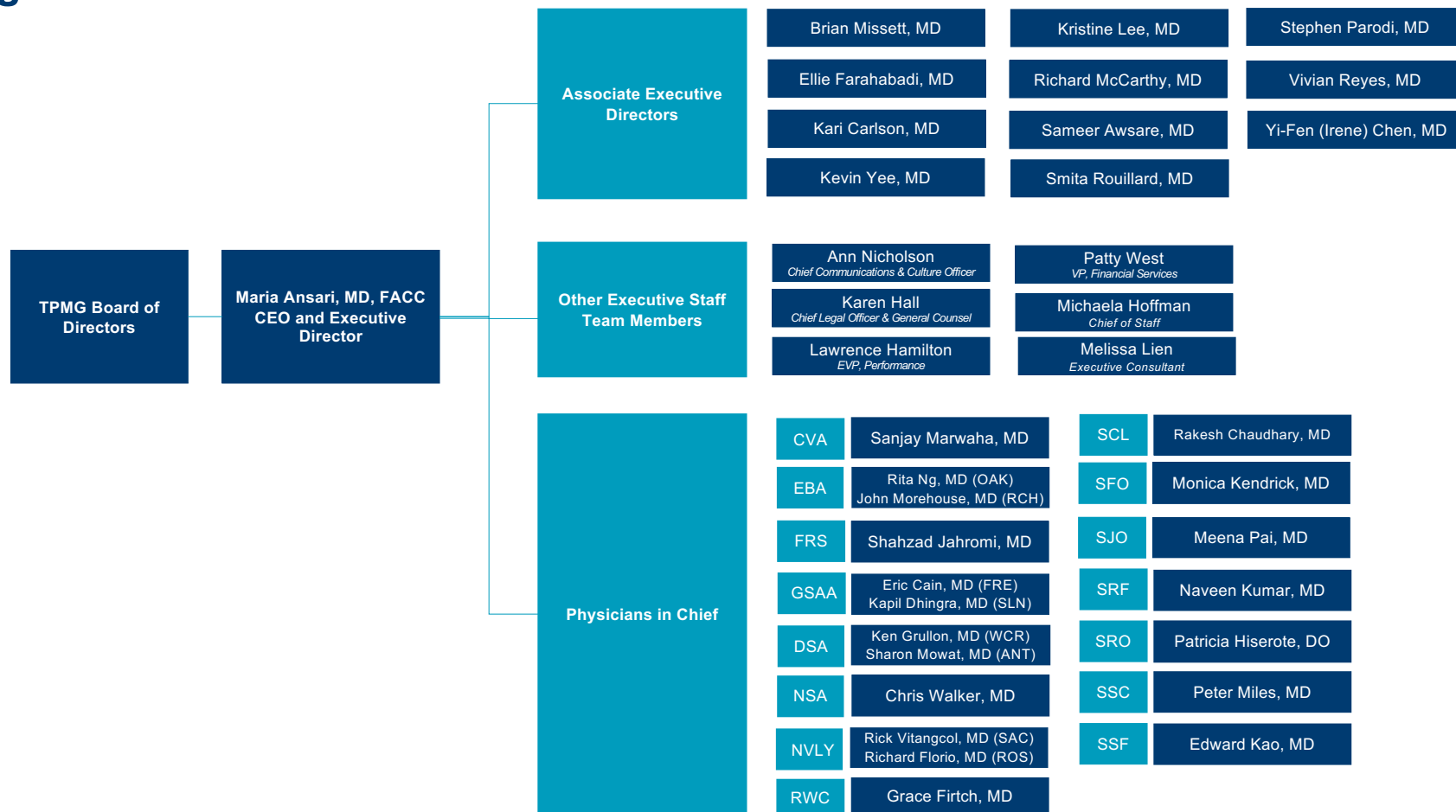


February 3, 2025

© 2023 The Permanente Medical Group



# TPMG Executive Offices Organizational Structure



# Portfolios (High Level)



Brian Missett, MD

Medical Subspecialties  
Senior Care/Medicare  
Lab  
Care Experience  
Member Grievances



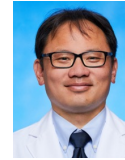
Ellie Farahabadi, MD

Physician HR  
Recruitment, Retention,  
Development  
Continuing Education



Kari Carlson, MD

OB/GYN  
Pediatrics  
EID



Kevin Yee, MD

AFM  
OP COVID-19 Care  
ROMI  
New Member Onboarding



Kris Lee, MD

Innovation  
Virtual Medicine  
Technology  
AACC  
DOR



Vivian Reyes, MD

Hospital  
Emergency Department  
Continuing Care  
EPRP/OURS  
Advanced Care At Home  
Emergency Management



Sameer Awsare, MD

Mental Health  
Pharmacy  
Accurate Doc & Coding  
Outside Medical Services  
FOOI  
MediCal  
Supportive Care Services



Smita Rouillard, MD

Surgical Services  
Periop  
Imaging  
Occ Health / EHS  
Capital  
Finance



Steve Parodi, MD

Government Relations  
Government Programs  
Brand & Communications  
External Affairs  
Risk Management



Irene Chen, MD

OP Quality  
Compliance  
Health Education  
Regulatory

# Portfolios (High Level)



Rich  
McCarthy, MD

MAPMG



Lawrence  
Hamilton

Performance  
Administrative Leaders  
TPMG Consulting  
TPMG HR & Labor Relations  
Nursing & Clinical Practice  
KP Allied School of Health



Patty  
West

Finance and Accounting  
Capital  
Data & Analytics  
Medical Office Controllers  
Business Ventures  
Optical



Karen  
Hall

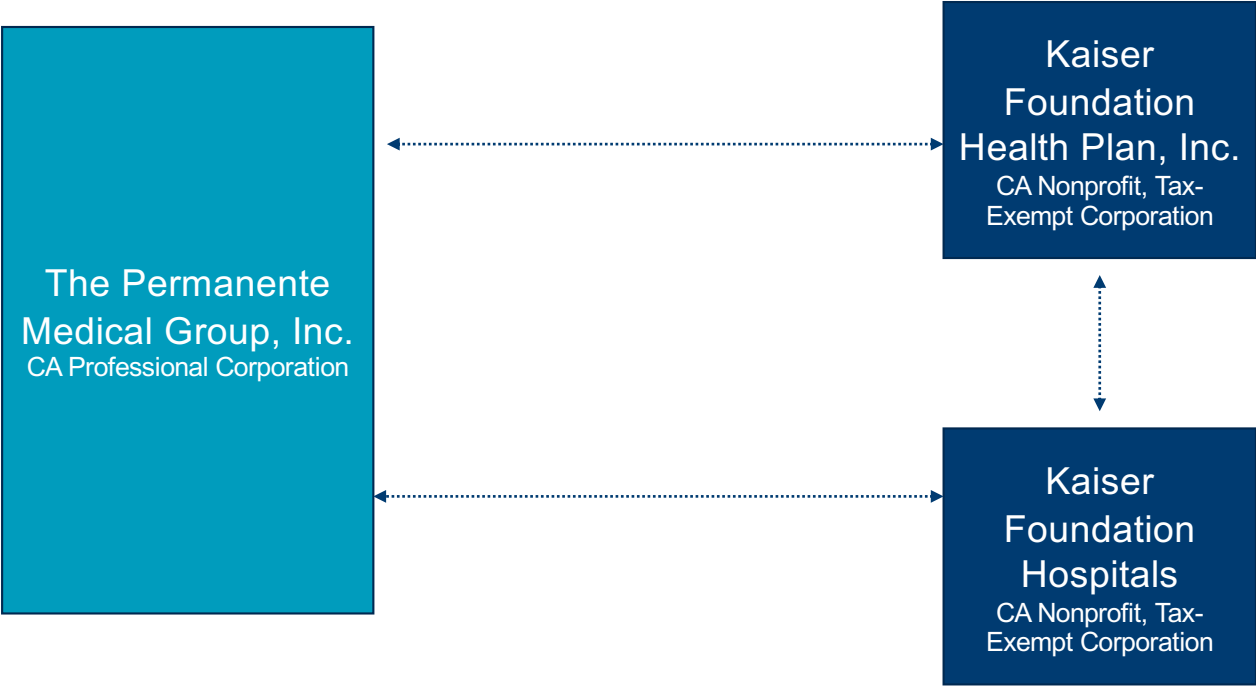
Legal  
Professional Liability



Ann  
Nicholson

Culture & Organization  
Development  
TPMG Communications  
Executive Support

# TPMG / Kaiser Contractual Relationships



# The Permanente Medical Group Corporate Entity Org Chart

