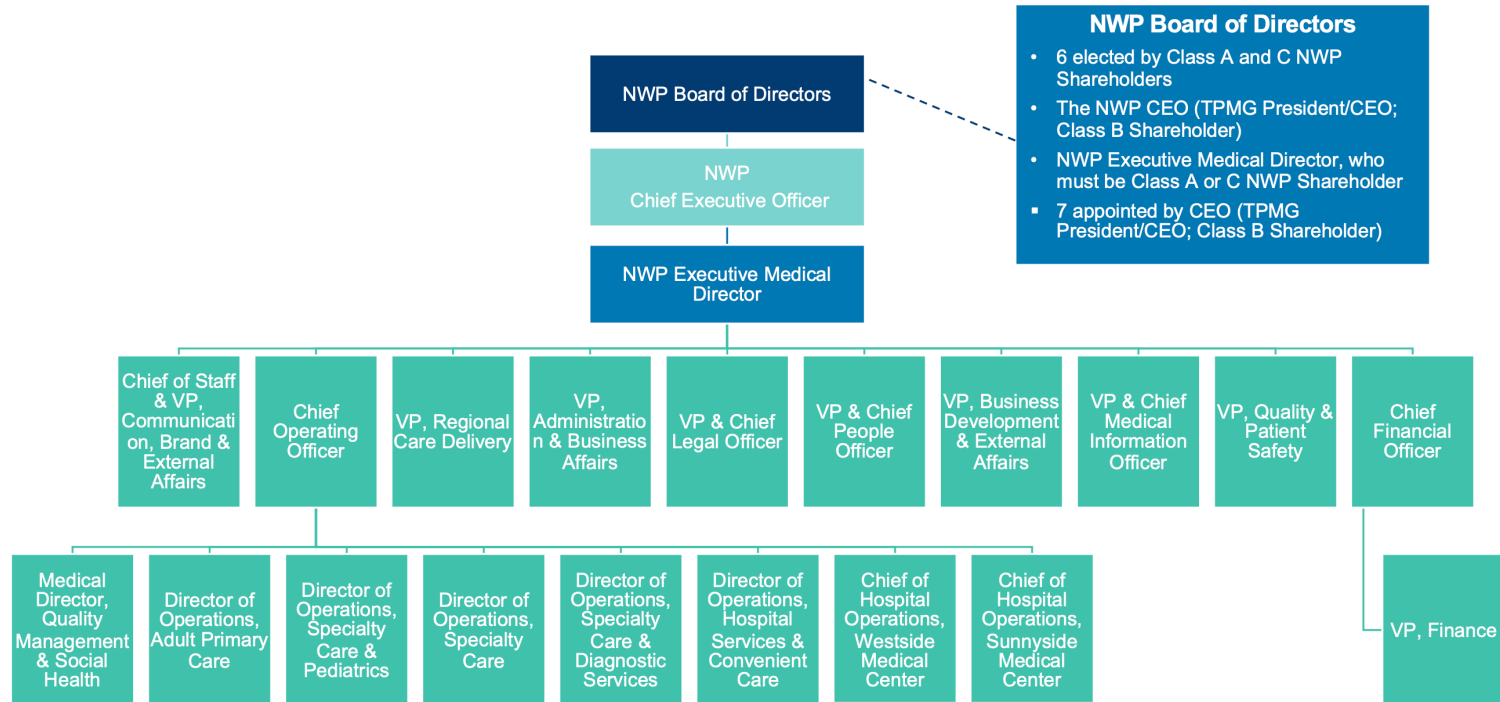


EXHIBIT J

Northwest Permanente Post-Affiliation



NWP Board of Directors

- 6 elected by Class A and C NWP Shareholders
- The NWP CEO (TPMG President/CEO; Class B Shareholder)
- NWP Executive Medical Director, who must be Class A or C NWP Shareholder
- 7 appointed by CEO (TPMG President/CEO; Class B Shareholder)

HCMO - 0000368