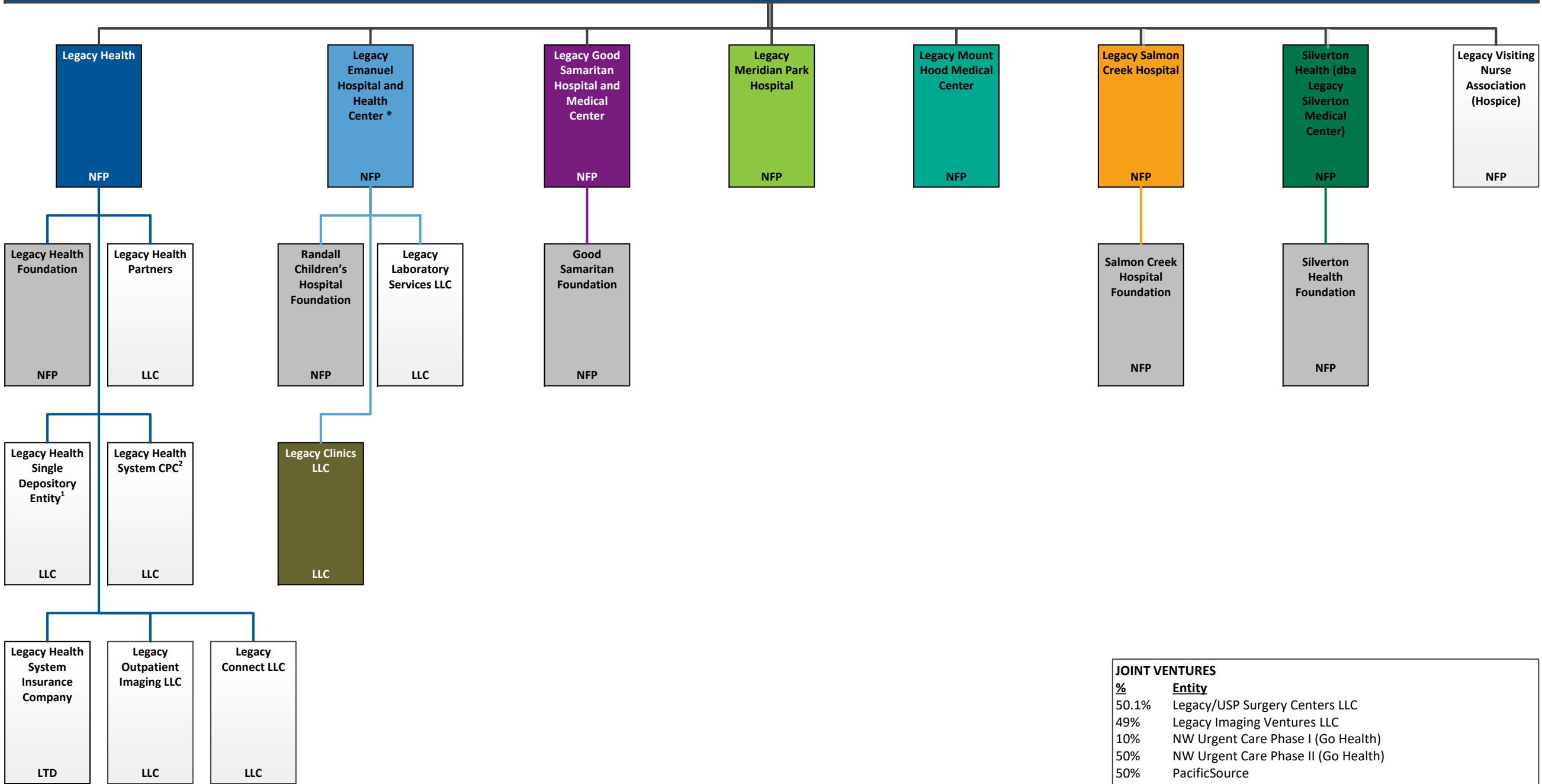


LEGACY HEALTH (Legal Entities)

08-09-2024



| JOINT VENTURES | |
|----------------|--|
| % | Entity |
| 50.1% | Legacy/USP Surgery Centers LLC |
| 49% | Legacy Imaging Ventures LLC |
| 10% | NW Urgent Care Phase I (Go Health) |
| 50% | NW Urgent Care Phase II (Go Health) |
| 50% | PacificSource |
| 39.5% | Portland Hospital Services Corporation |
| 44.3% | Wishing Well Associates Inc. |
| 50% | Option Care at Legacy, LLC |
| 25% | Life Flight Network LLC |
| 50% | NW Hospital Partnership, Inc. |

PUBLIC

Exhibit 2