

Overview of Proposed FY25 Capital Budget

- The annual capital budget for FY25 is proposed at \$125m, holding back \$25m from the current year's allocation to balance the \$(25)m deficit.
- The holdback is largely taken from new capacity projects to maintain infrastructure spending to the extent possible.
- We also plan to spend \$269m on OHEP Inpatient Addition construction, funded by the remaining \$134m of bond funds borrowed in December 2021 and \$135m of the \$140m in FEMA funds that covered extra pandemic costs, in place of regular earnings.
- Perinatal Addition design will be completed with budget authority approved in FY24.

Capital Budget Components (millions)	FY24 Budget	FY25 Proposed
Healthcare infrastructure	\$33	\$34
Healthcare new capacity	38	27
Other University infrastructure	40	39
Other University new capacity	39	24
Total annual capital	150	125
OHEP Inpatient Addition	230	269
OHEP Perinatal Addition design	25	
Real estate opportunities	20	
Total capital budget	\$426	\$394



Proposed FY25 Capital Budget Projects

Proposed FY25 Capital Budget (000)	OHSU Healthcare	Other University	Total OHSU		OHSU Healthcare	Other University	Total OHSU
Infrastructure							
Infrastructure / replacement	\$33,593	\$18,583	\$52,176				
Library materials / Academic areas	815	5,850	6,665				
Space committee (relocation & repurposing)	-	1,475	1,475				
Research equipment replacement	-	1,075	1,075				
Flexible workspace	-	925	925				
School of Medicine equipment replacement	-	845	845				
Public Safety and Administration	-	750	750				
Institutional contingency / infrastructure	-	9,322	9,322				
<i>Subtotal infrastructure / replacement</i>	<u>34,408</u>	<u>38,825</u>	<u>73,233</u>				
Strategic pre-committed							
Robertson Life Sciences Building - Cryo-EM remodel	-	3,420	3,420				
PGE feeder utility connection	-	500	500				
Security cameras for parking structures	-	1,000	1,000				
OHSU 2025 initiatives	-	527	527				
Research equipment from grants	-	5,000	5,000				
RLSB - Knight Cancer / Dentistry lab build-out	-	7,169	7,169				
Marquam Hill nonconforming site improvements	-	1,200	1,200				
Partnership project (lease consolidation)	-	1,000	1,000				
West Campus drain piping replacement	-	500	500				
Knight Cancer / Legacy Collaborative (Comm Hem-Onc)	(1,554)	-	(1,554)				
Mt. Hood cancer infusion clinic expansion	3,871	-	3,871				
GI Lab relocation (Hatfield Research Center 11)	8,527	-	8,527				
Emergency department expansion - programming	2,500	-	2,500				
<i>Subtotal strategic pre-committed</i>	<u>13,343</u>	<u>20,316</u>	<u>33,659</u>				
				New strategic priorities			
				Visage Imaging PACS replacement	\$319	-	\$319
				Epic Cupid software implementation	490	-	490
				Epic Home Infusion software implementation	979	-	979
				Alaris pump replacement	5,098	-	5,098
				OR lights, booms & integration replacement	7,043	-	7,043
				Parking garage C (ED) infrastructure updates	-	2,200	2,200
				Kronos UKG Dimensions software upgrade	-	1,978	1,978
				<i>Subtotal new strategic priorities</i>	<u>13,930</u>	<u>4,178</u>	<u>18,108</u>
				Total FY25 annual capital allocation			125,000
				OHEP: Inpatient Addition (IPA)*			269,038
				Total FY25 capital budget			\$394,038

*Prior-year capital allocations are sufficient to complete design of the Perinatal Addition.



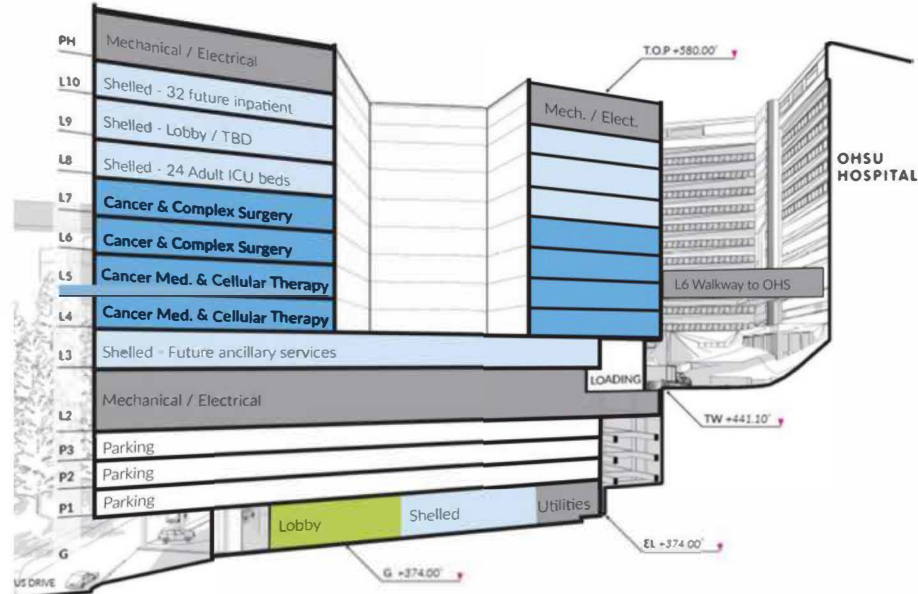
Multi-Year Projects in FY25 Capital Budget

Multi-Year Strategic Capital Projects (000)	Total Project*	FY25 Capital Budget	FY26 & Beyond
<i>Healthcare initiatives</i>			
Mt. Hood infusion clinic expansion (Community Hem-Onc)	\$9,052	\$3,871	\$247
GI Lab relocation (Hatfield Research Ctr 11)	16,930	8,527	6,000
OR lights, booms & integration replacement	14,085	7,043	7,043
<i>Other University initiatives</i>			
PGE feeder utility connection	\$4,800	\$500	\$3,000
Marquam Hill nonconforming site improvements	16,700	1,200	12,600
Kronos UKG Dimensions upgrade (timekeeping system)	6,749	1,978	4,771

**Total project includes prior-year components.*

IPA in May 2026: 128 New Beds + 4 Shelled Floors

- The \$650m Inpatient Addition (IPA) will add 128 new beds, bringing OHSU's total from 549 to 677 beds, with 4 shelled floors.
- We completing design for a ~\$350m perinatal addition using budget authority approved in FY24.



Level	Unit	Beds
7	Cancer & Complex Surgery	32
6	Cancer & Complex Surgery	32
5	Cancer Medicine & Cellular Therapy	32
4	Cancer Medicine & Cellular Therapy	32
		128

Inpatient Addition Funding (millions)	
Bonds issued in December 2021	\$350
FEMA funds in place of earnings	140
IPA fundraising target	160
Total IPA funding	\$650