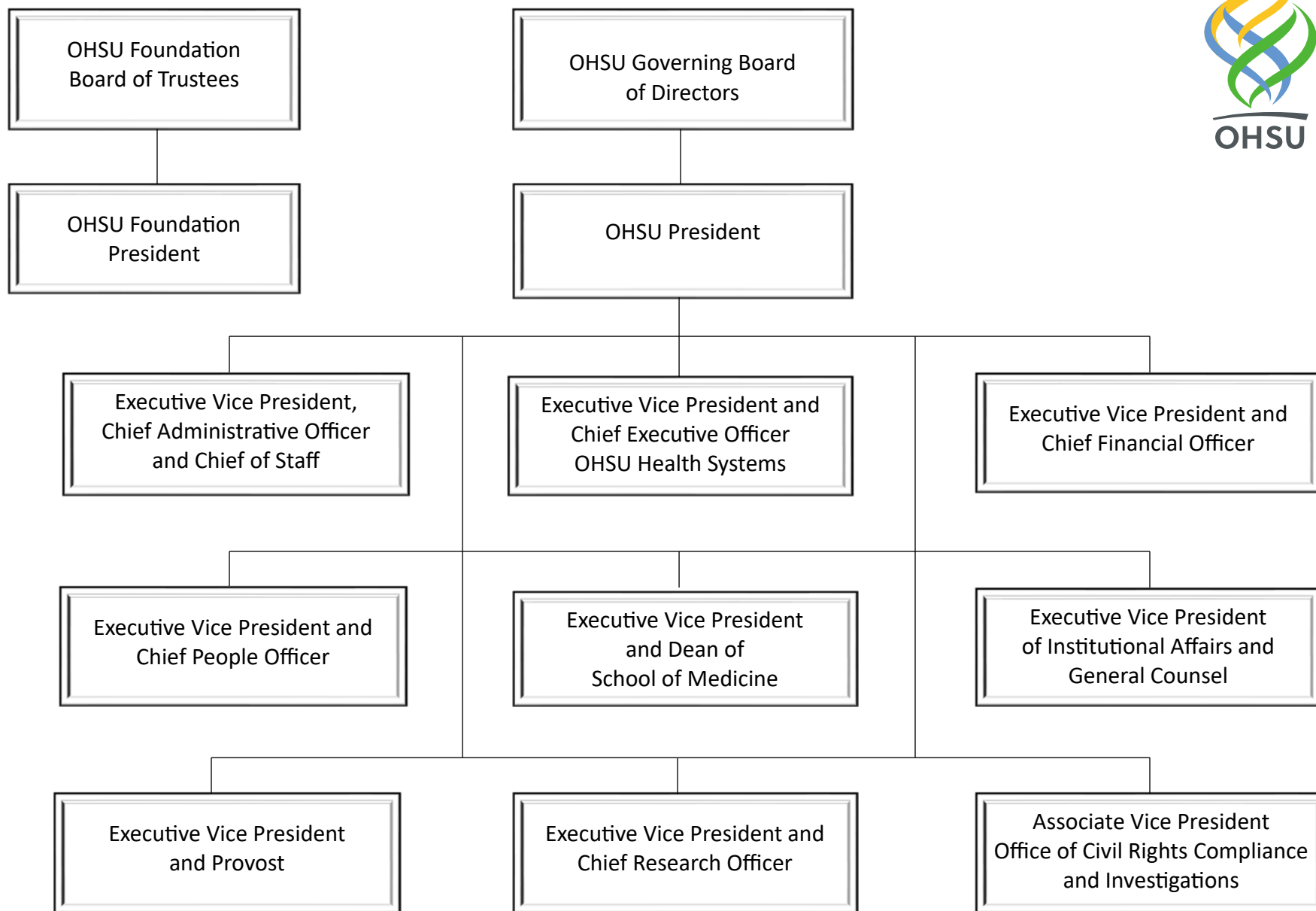
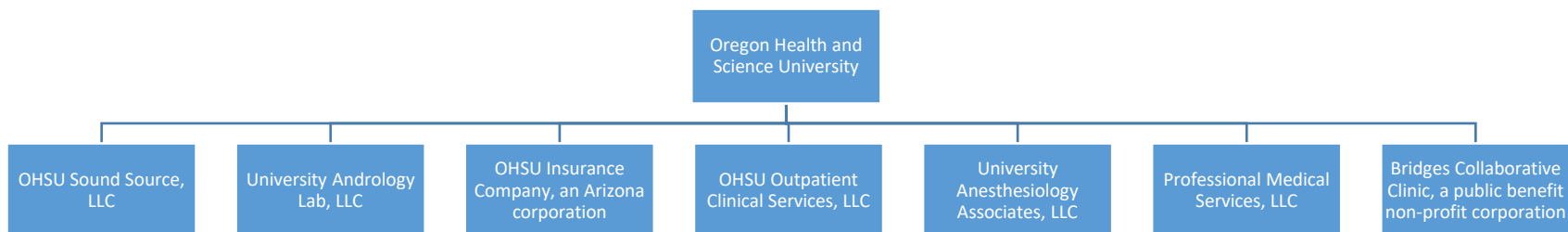


Supplemental Materials D: OHSU Pre-Transaction Organizational Structure Diagram



OHSU Wholly-Owned Subsidiaries



OHSU Membership Interests

1. Tuality Health Plan Services, an Oregon public benefit non-profit corporation (OHSU is the sole corporate member. Remaining members are Oregon licensed physicians or healthcare providers)
2. OHSU Health IDS, LLC (OHSU holds 60% interest)
3. OHSU-AH, LLC (OHSU owns a 50% interest)
4. OHSU Project Co., LLC (OHSU owns a 33% interest)
5. Life Flight Network, LLC (OHSU owns a 25% interest)
6. Pacific Northwest Renal Services, LLC (OHSU owns a 5% interest)
7. Oregon Fiber Partnership, an Oregon public benefit non-profit corporation (OHSU is a member)

OHSU Foundation Affiliations

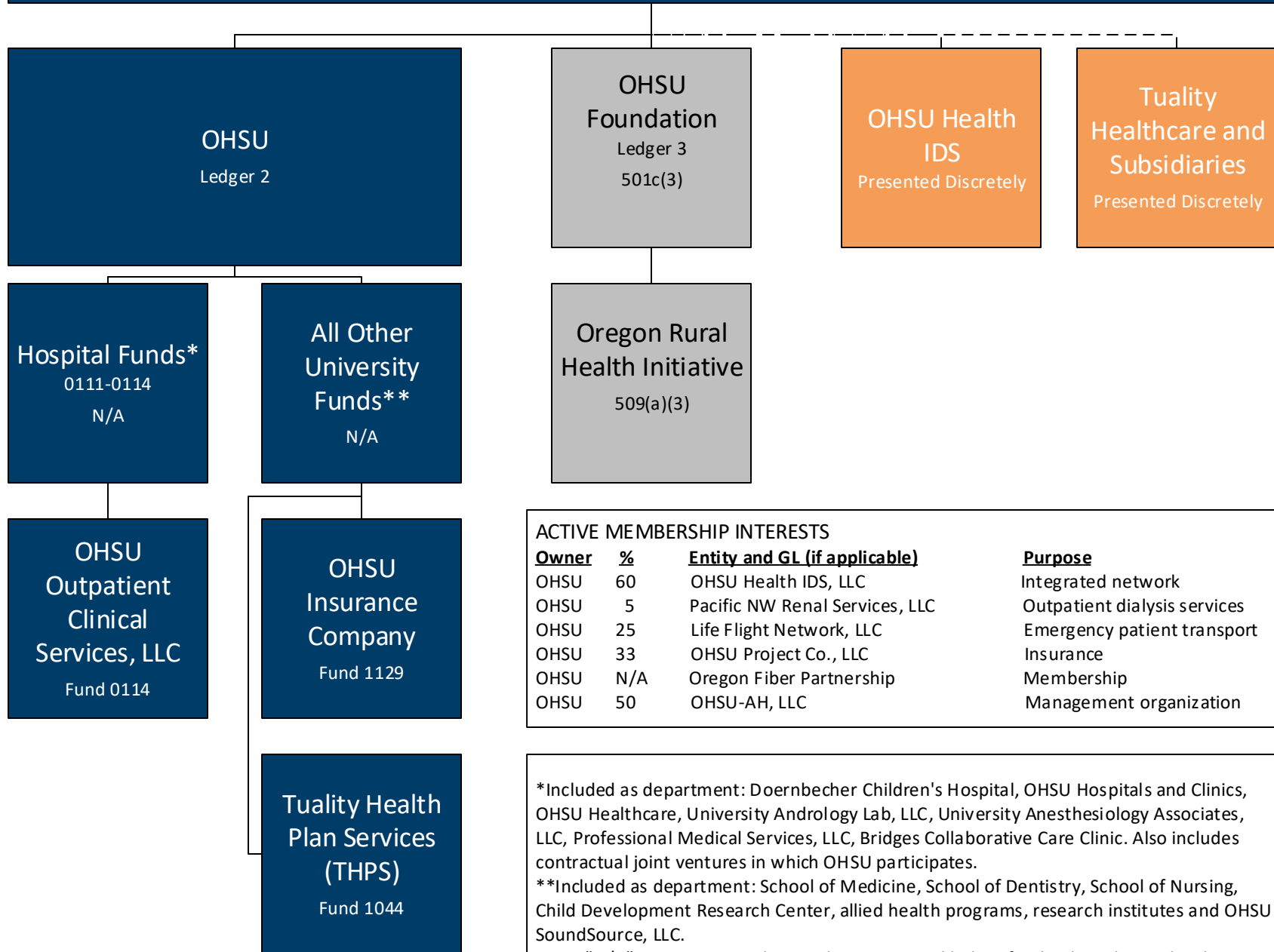
1. OHSU Foundation and OHSU Foundation, dba Doernbecher Children’s Hospital Foundation, a 501(c)(3)
2. Oregon Rural Health Initiative, a 509(a)(3) entity.

OHSU Assumed Business Names

1. Bridges Clinic
2. Cascade Life Alliance

3. Columbia River Eye Clinic
4. Foresight Optical
5. Ophthalmology and Neurology Associates
6. OHSU
7. OHSU Health
8. OHSU Healthcare
9. OHSU Hospitals and Clinics
10. OHSU Medical Group
11. Oregon Health and Science University Medical Group
12. OHSU Pharmacy at Tuality
13. Northwest Marrow Transplant Program
14. University Professional Services
15. Department of Ophthalmology

Oregon Health and Science University (OHSU) General Ledger/Financial



ACTIVE MEMBERSHIP INTERESTS

<u>Owner</u>	<u>%</u>	<u>Entity and GL (if applicable)</u>	<u>Purpose</u>
OHSU	60	OHSU Health IDS, LLC	Integrated network
OHSU	5	Pacific NW Renal Services, LLC	Outpatient dialysis services
OHSU	25	Life Flight Network, LLC	Emergency patient transport
OHSU	33	OHSU Project Co., LLC	Insurance
OHSU	N/A	Oregon Fiber Partnership	Membership
OHSU	50	OHSU-AH, LLC	Management organization

*Included as department: Doernbecher Children's Hospital, OHSU Hospitals and Clinics, OHSU Healthcare, University Andrology Lab, LLC, University Anesthesiology Associates, LLC, Professional Medical Services, LLC, Bridges Collaborative Care Clinic. Also includes contractual joint ventures in which OHSU participates.

**Included as department: School of Medicine, School of Dentistry, School of Nursing, Child Development Research Center, allied health programs, research institutes and OHSU SoundSource, LLC.

Note: "N/A" on an entity indicates this is a general ledger fund only and not a legal entity.

