

Cardinal Health Legal Entity Chart

Confidential
Not for General Distribution

09/30/2024 SJM

TABLE OF CONTENTS

Legend	Description of Shapes and Colors Used In the Charts
Chart 1	Pharmaceutical & Pharmacy Solutions Structures
Chart 2	Nuclear & Precision Health Solutions Structures
Chart 3	Specialty Pharmaceutical Structures
Chart 4	Medicine Shoppe Structures
Chart 5	Corporate Structures
Chart 6	Nevada Structures
Chart 7	Domestic Medical Structures
Chart 8	International Medical & Finance Structures



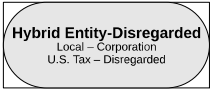



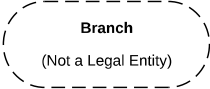
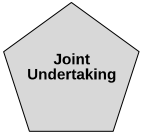


Cardinal Health Legal Entity Chart

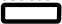
Confidential
Not for General Distribution

09/30/2024 SJM

LEGEND

Entity Shape Legend

 Corporate Entity	This is an entity that is treated as a Corporation for all purposes.
 Disregarded Entity	This is an U.S. entity that is Disregarded for U.S. Tax purposes, but a separate entity for U.S Legal purposes. <i>(Treated as part of its parent. [i.e Branch])</i>
 Hybrid Entity-Disregarded Local - Corporation U.S. Tax - Disregarded	This is an entity that is treated differently for Local taxes vs. U.S. taxes. It is a Corporation for Local taxes and a Disregarded entity for U.S. tax purposes.
 Dual Resident Company	This is an entity that is a resident of (Taxable in) 2 countries.
 Reverse Hybrid Entity Local - Flow Through U.S. Tax - Corporation	This is an entity that is treated differently for Local taxes vs. U.S. taxes. It is a flow-through entity (Partnership) for Local taxes and a Corporation for U.S. tax purposes.
 Partnership	This is an entity that is treated as a Partnership (or Joint Venture).
 Branch (Not a Legal Entity)	This is a Branch of an entity that is operating in a country different than the country in which the entity is incorporated. <i>(It is not treated as a separate legal entity.)</i>
 Joint Undertaking	This is an entity that is treated as a Joint Undertaking rather than as a partnership or joint venture.
 Hybrid Entity - Disregarded	This is an entity treated differently for Local taxes vs. U.S. taxes. It is a Partnership for Local taxes and a Disregarded entity for U.S. tax purposes.
 Hybrid Entity	This is an entity treated differently for Local taxes vs. U.S. taxes. It is a Corporation for Local taxes and a Partnership entity for U.S. tax purposes.

Note: Shaded Shape represents U.S. entity status.
 **Bold** outline indicates entity appears on other pages.

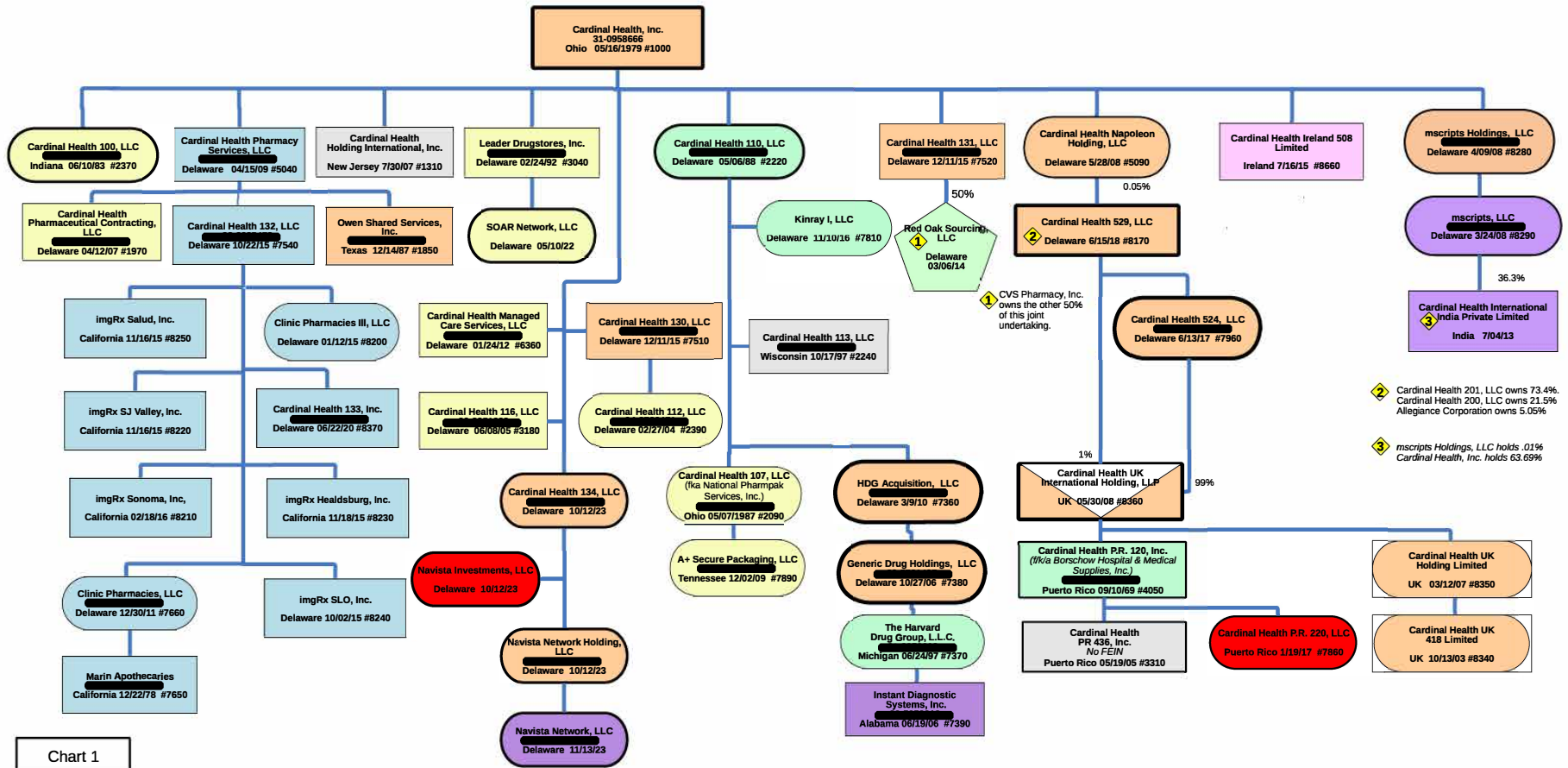
Entity Color Legend

 Sales and/or Distribution	 Service Company
 Manufacturing	 IP Company/Licensing/R&D
 Pharmacy	 Financing Company
 Principal	 Other
 Holding Company	 Inactive / Dormant

Cardinal Health Legal Entity Organization Chart (Pharmaceutical & Pharmacy Solutions)

Confidential
Not for General Distribution

09/30/2024 SJM



2 Cardinal Health 201, LLC owns 73.4%,
Cardinal Health 200, LLC owns 21.5%,
Allegiance Corporation owns 5.05%

3 mscripts Holdings, LLC holds .01%,
Cardinal Health, Inc. holds 63.69%

Chart 1

CONFIDENTIAL

RGH_000746_a

Confidential
Not for General Distribution

09/30/2024 SJM

Cardinal Health
Legal Entity Organization Chart
(Nuclear & Precision Health
Solutions)

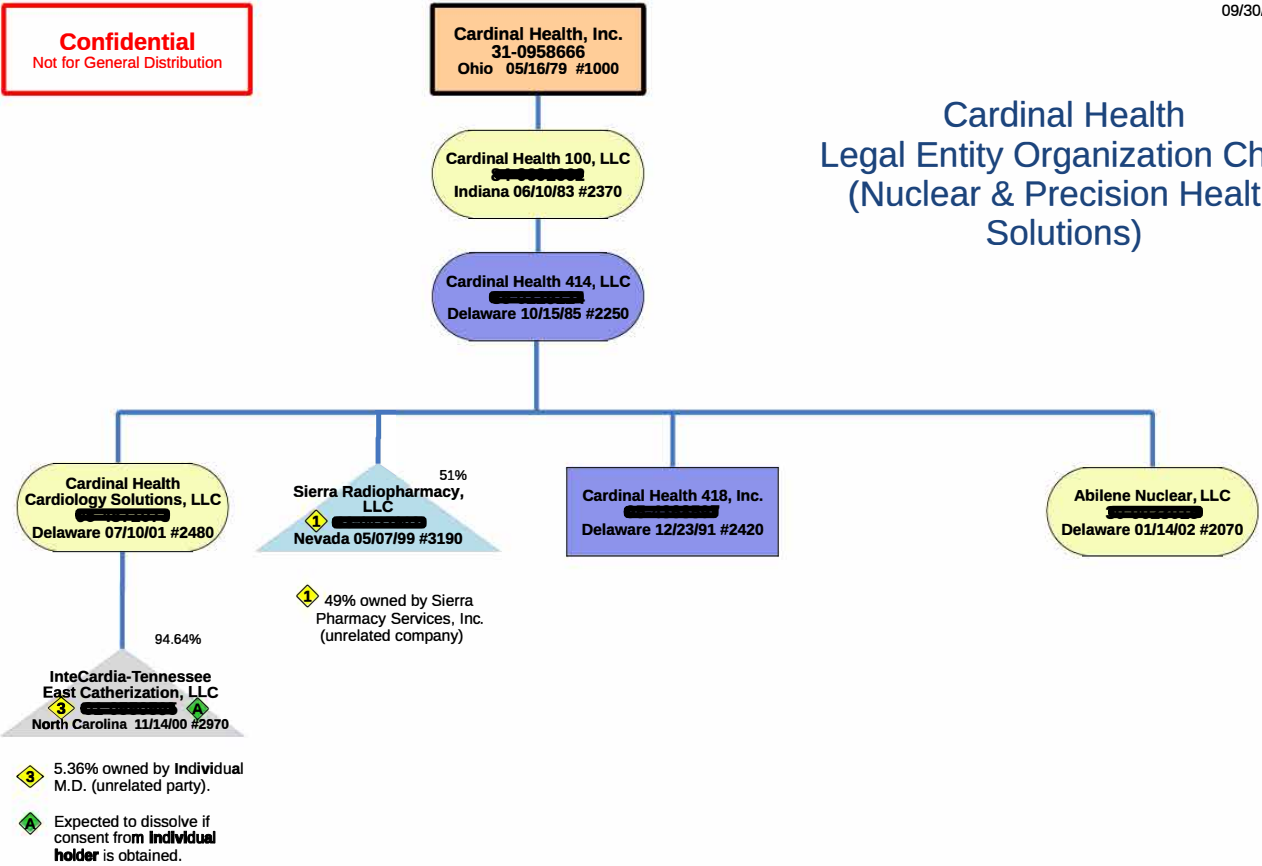


Chart 2

Confidential
Not for General Distribution

Cardinal Health Legal Entity Organization Chart (Specialty Pharmaceutical)

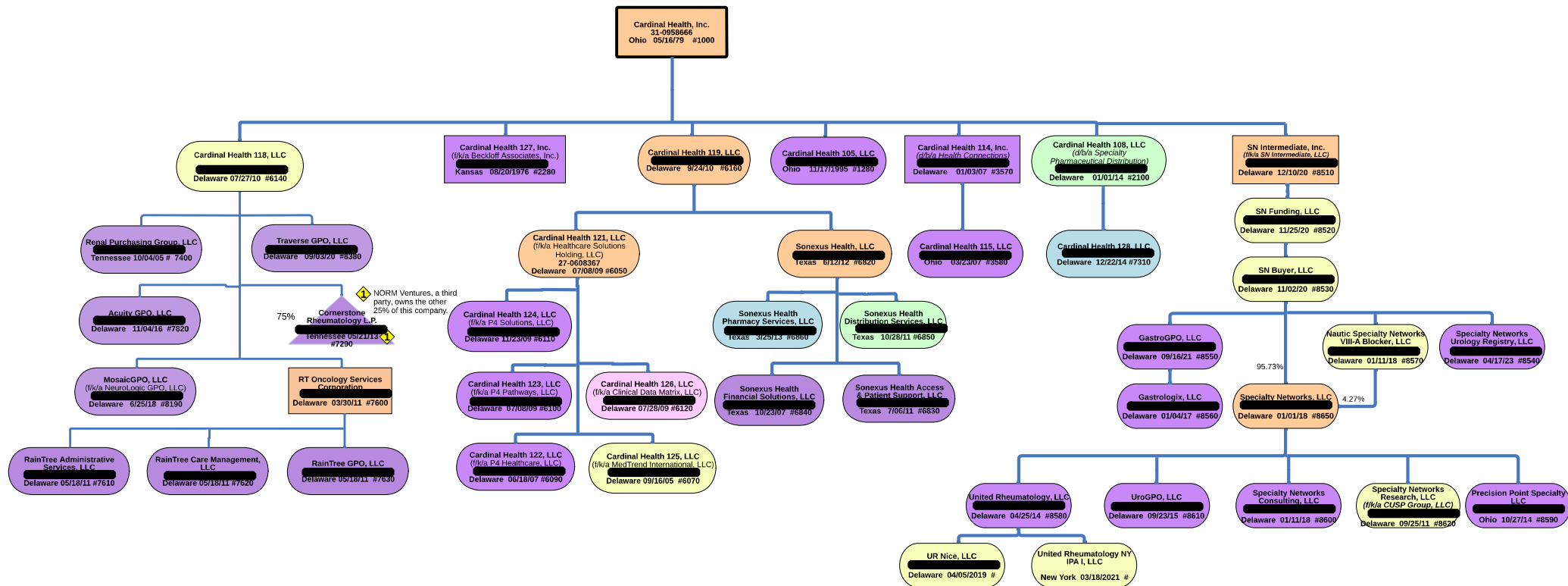


Chart 3

CONFIDENTIAL

RGH_000748_a

09/30/2024 SJM

Cardinal Health Legal Entity Organization Chart (Medicine Shoppe)

Confidential
Not for General Distribution

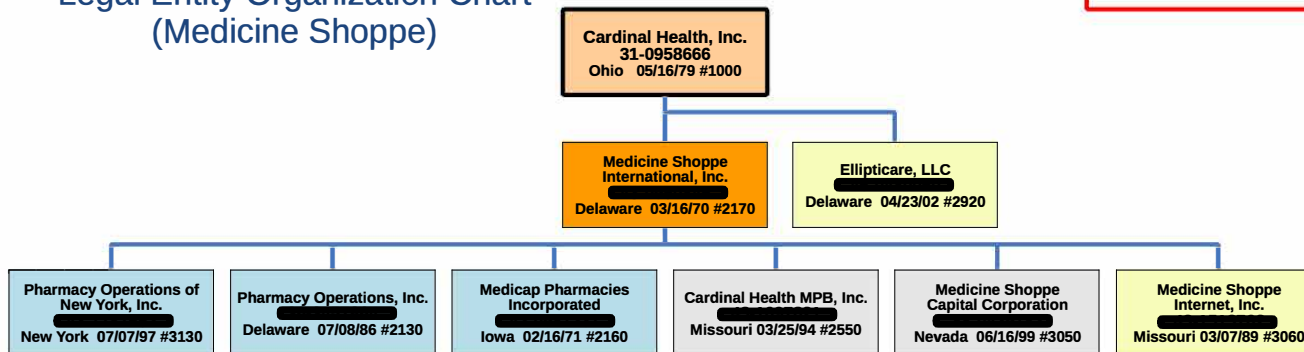


Chart 4

Cardinal Health Legal Entity Organization Chart (Corporate)

Confidential
Not for General Distribution

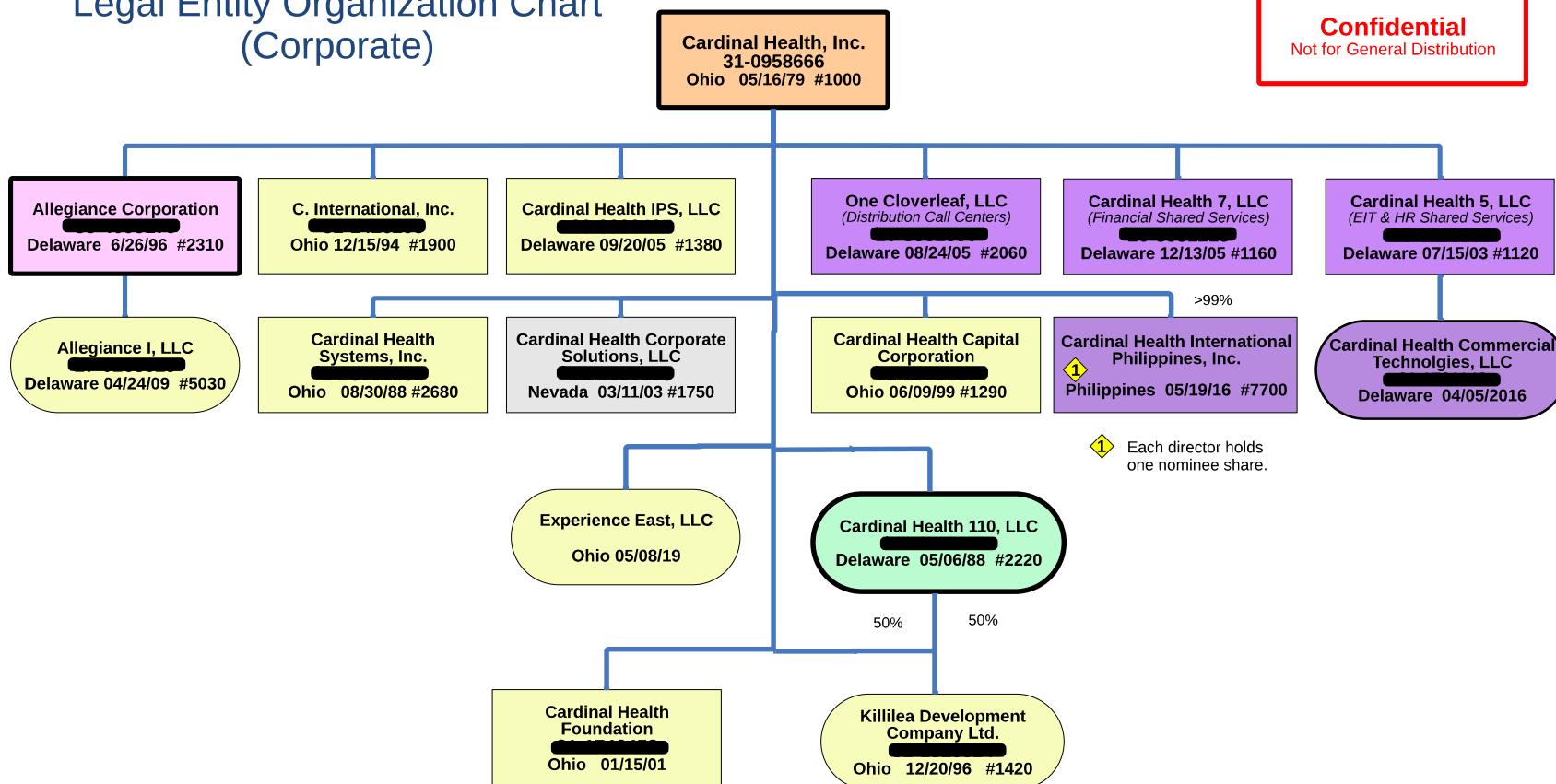


Chart 5

Cardinal Health Legal Entity Organization Chart (Nevada)

Confidential
Not for General Distribution

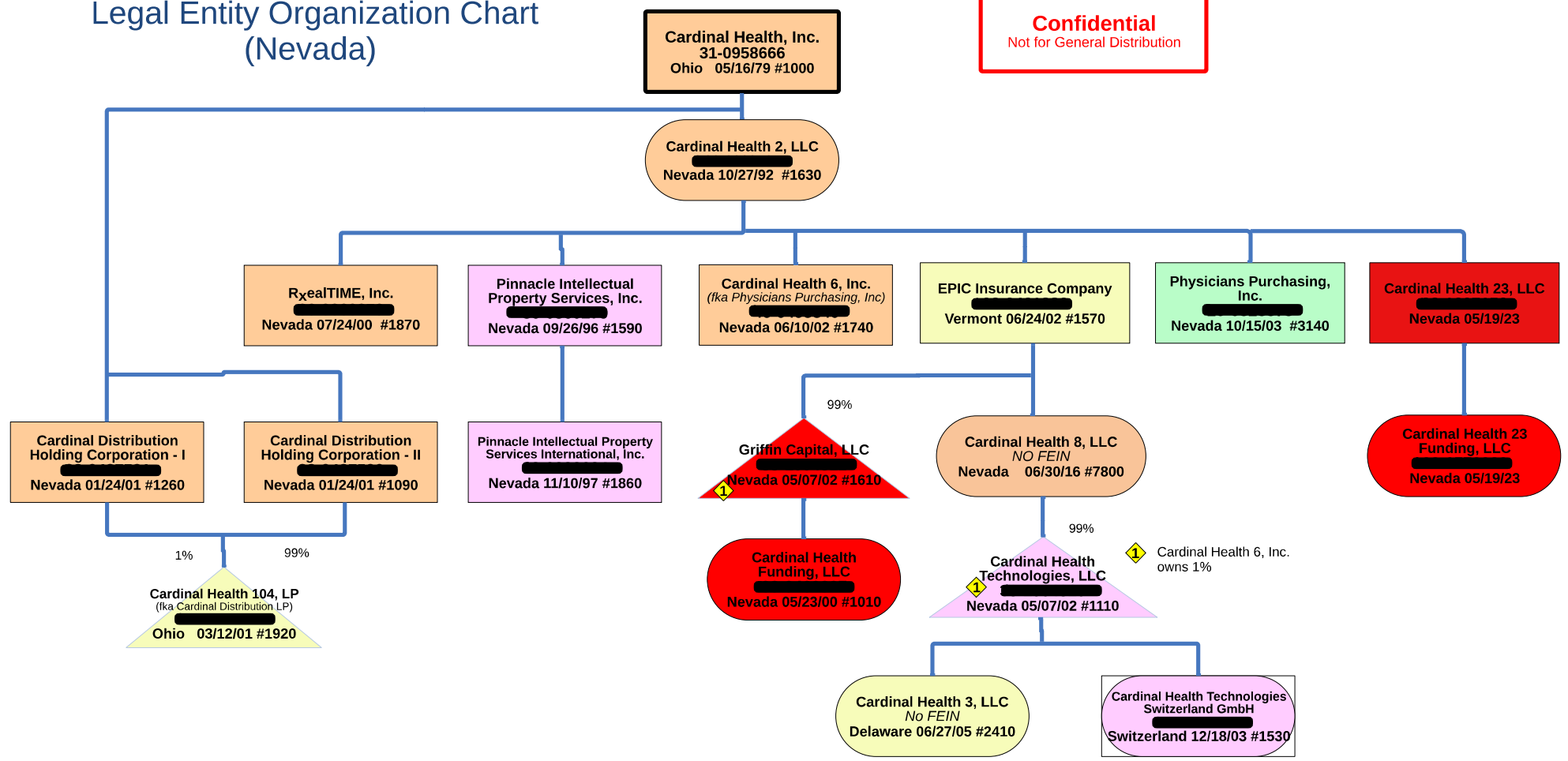


Chart 6

Cardinal Health
Legal Entity
Organization Chart
(Domestic Medical)

Confidential
Not for General Distribution

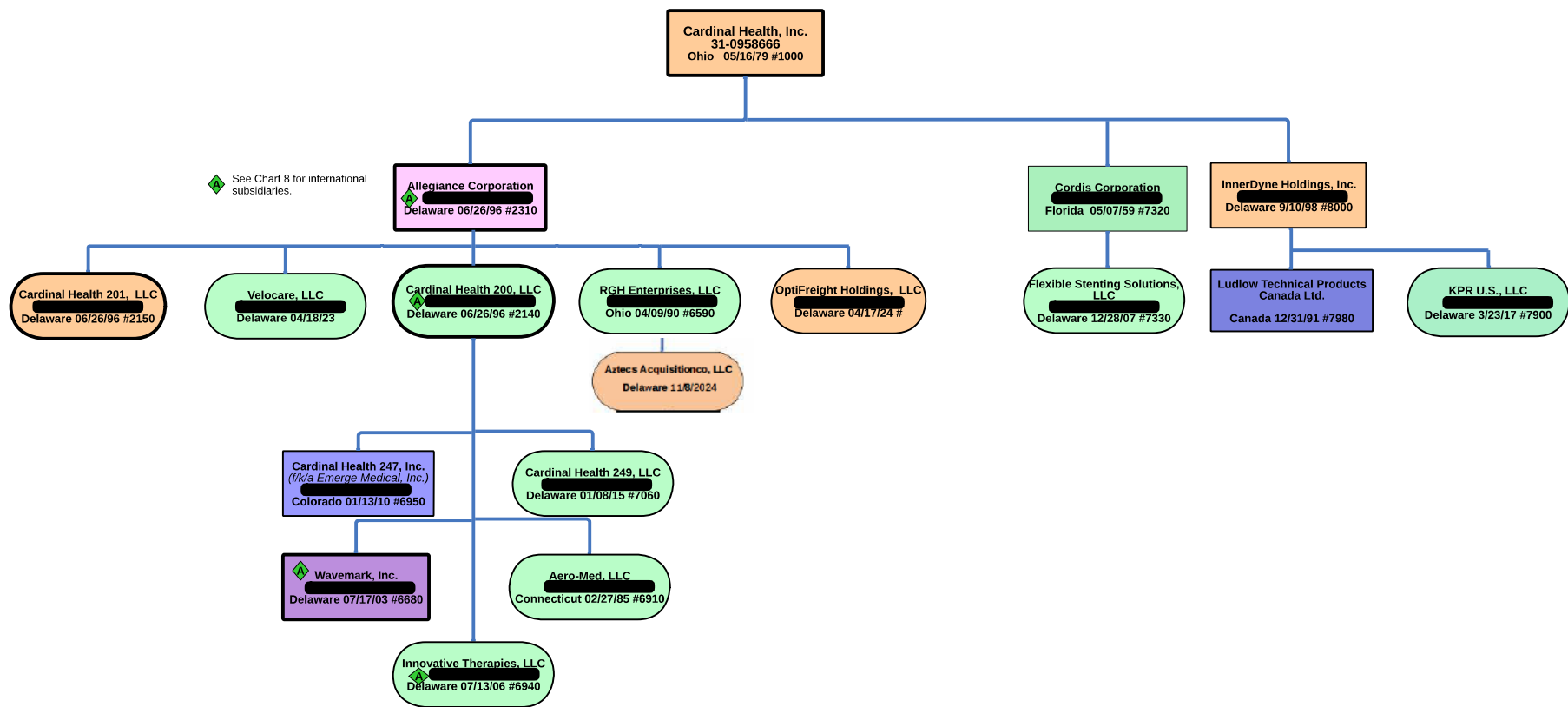
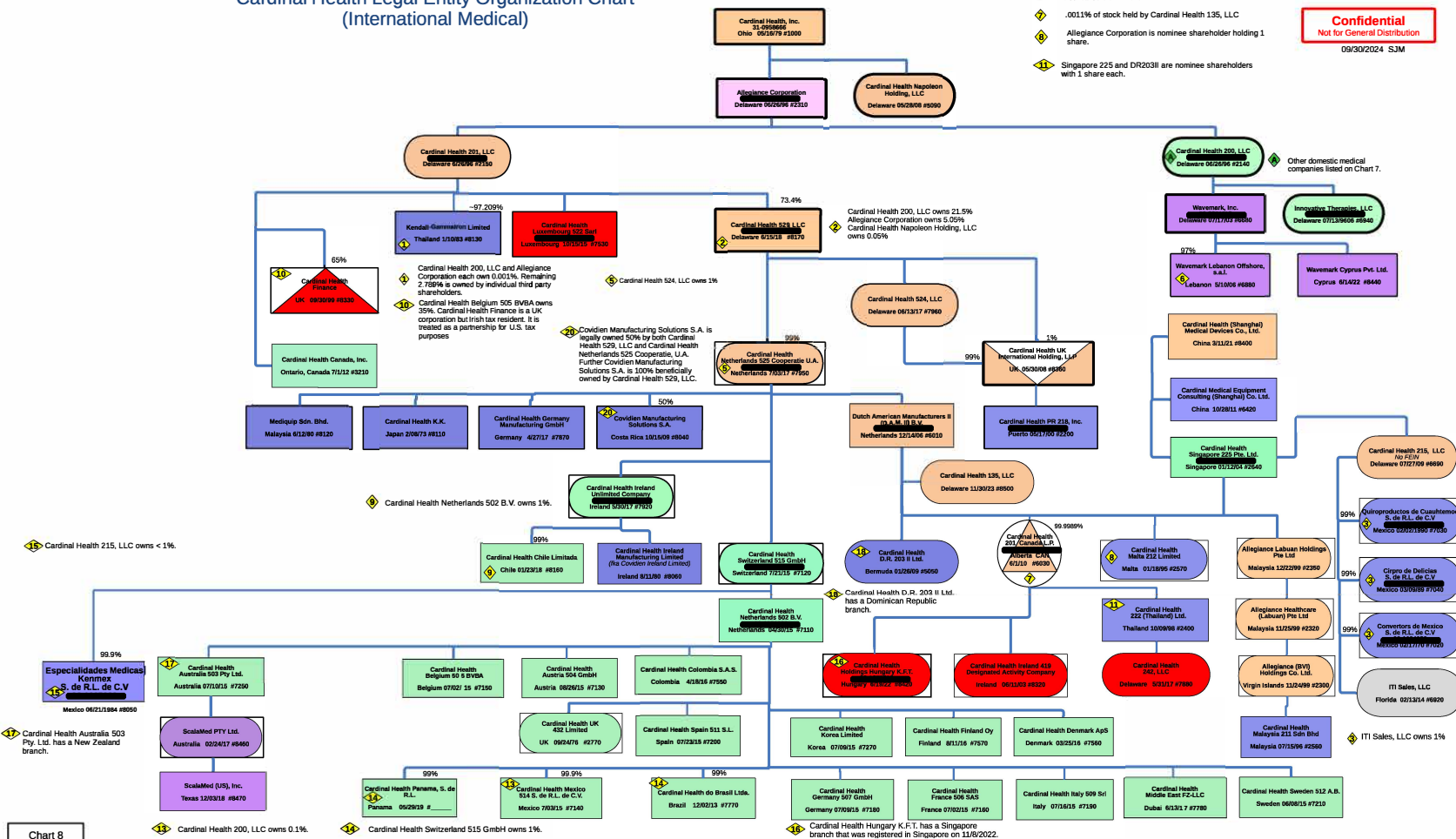


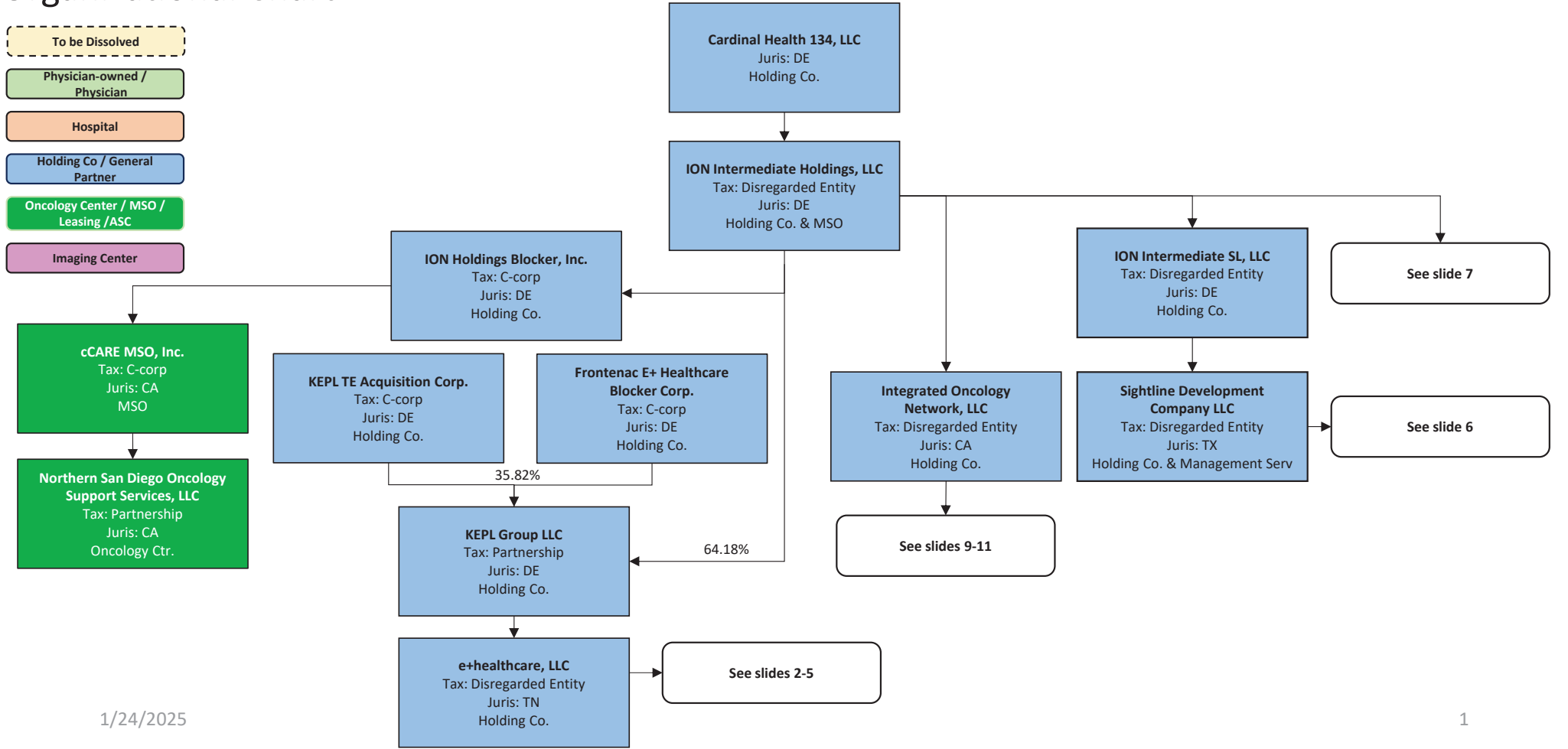
Chart 7

Cardinal Health Legal Entity Organization Chart (International Medical)



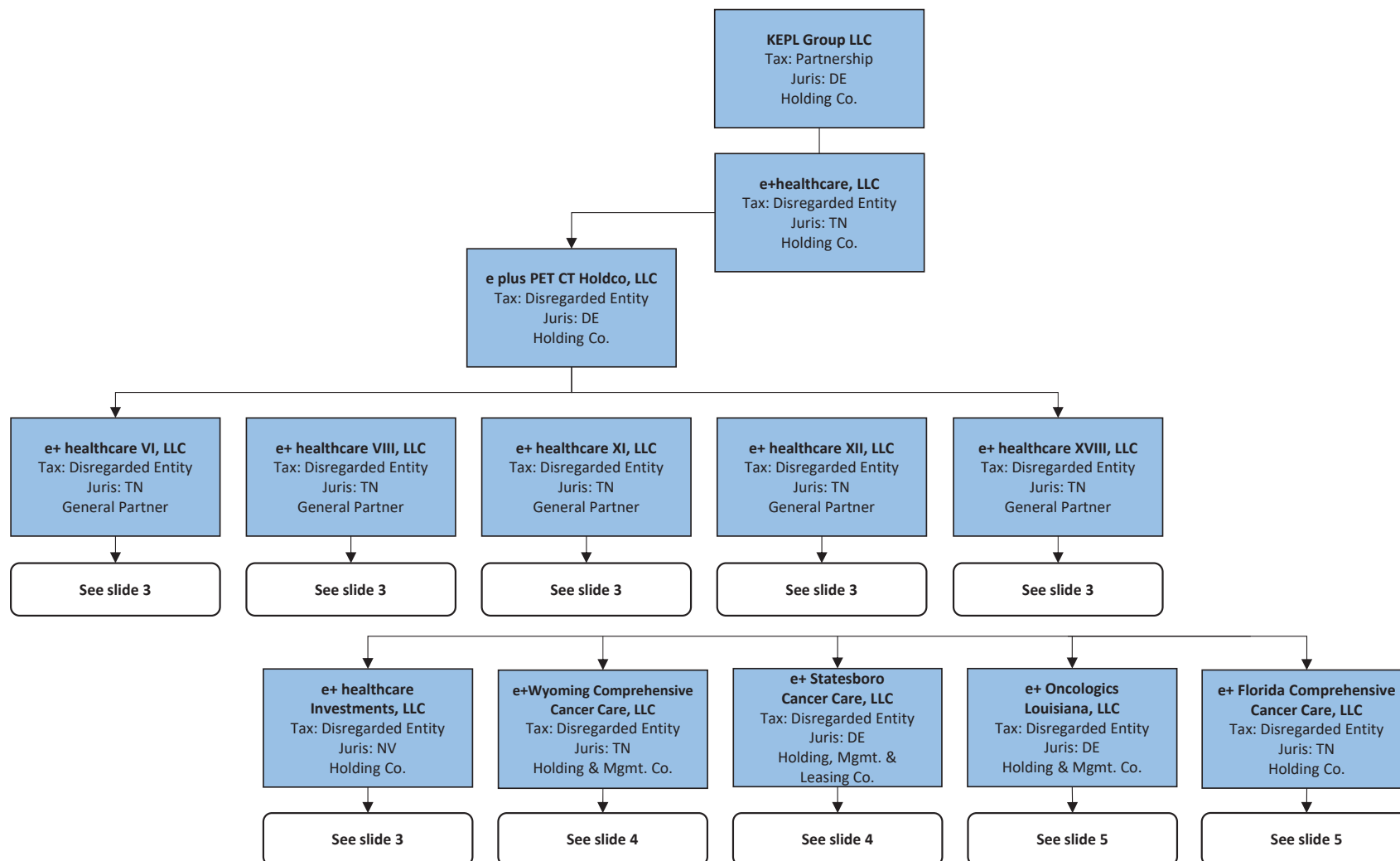
Integrated Oncology Network Organizational Chart

Note: The entity names are listed according to their legal registrations, separated by commas and appropriate spacing.



1/24/2025

e+ healthcare, LLC



1/24/2025

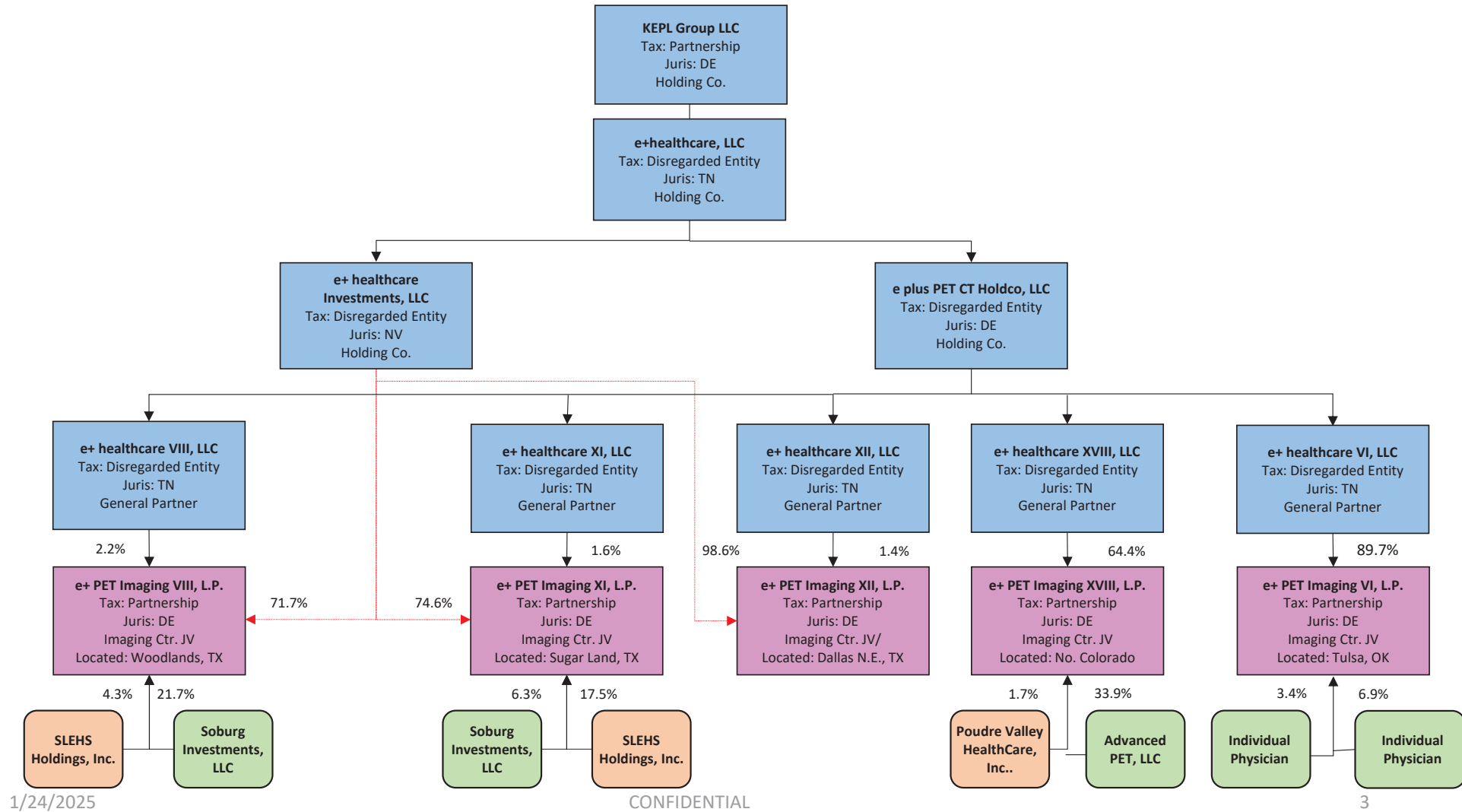
CONFIDENTIAL

2

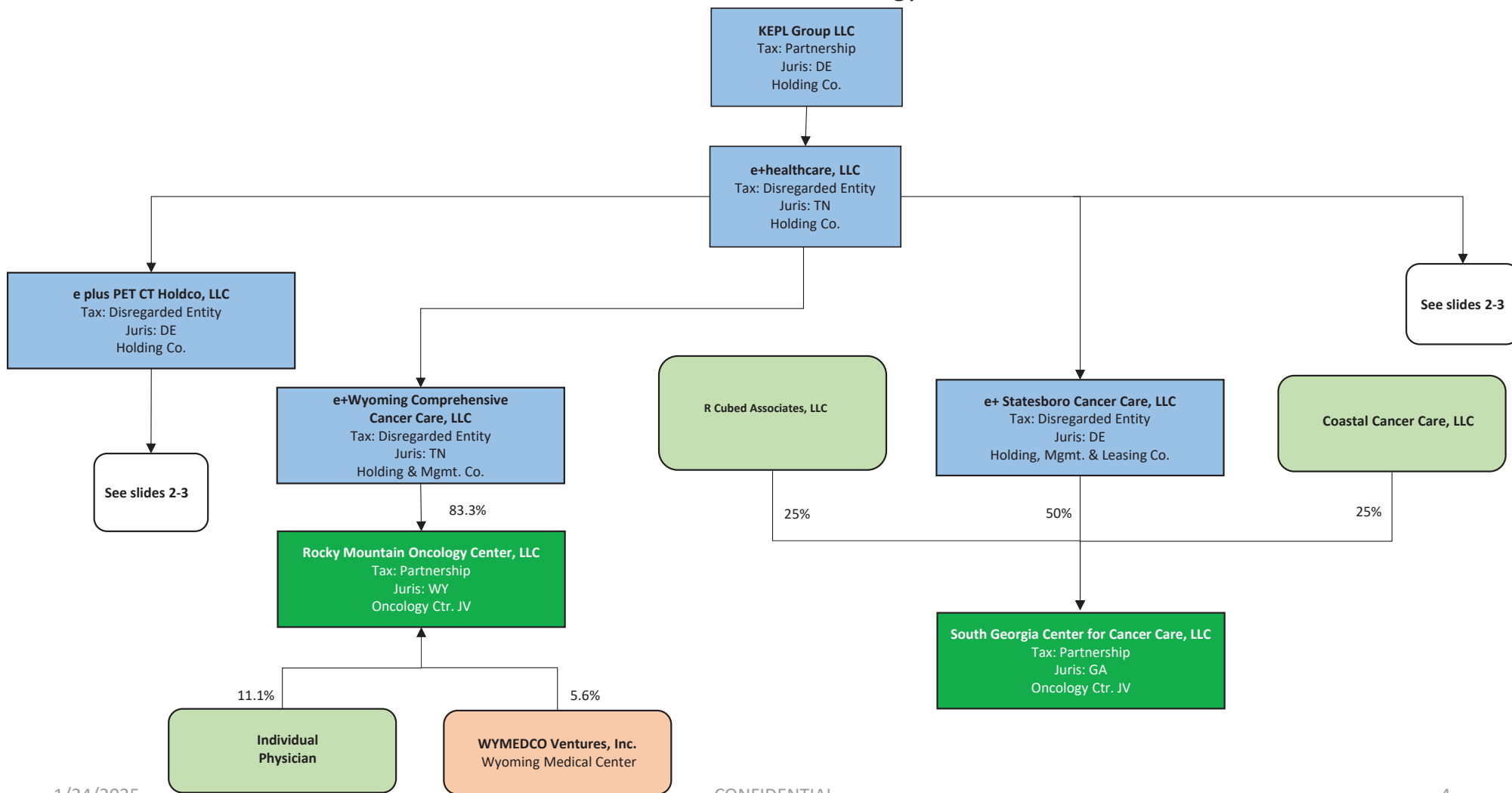
CONFIDENTIAL

RGH_000755_a

e+ healthcare, LLC PET/CT Imaging



e+ healthcare, LLC Oncology Centers



1/24/2025

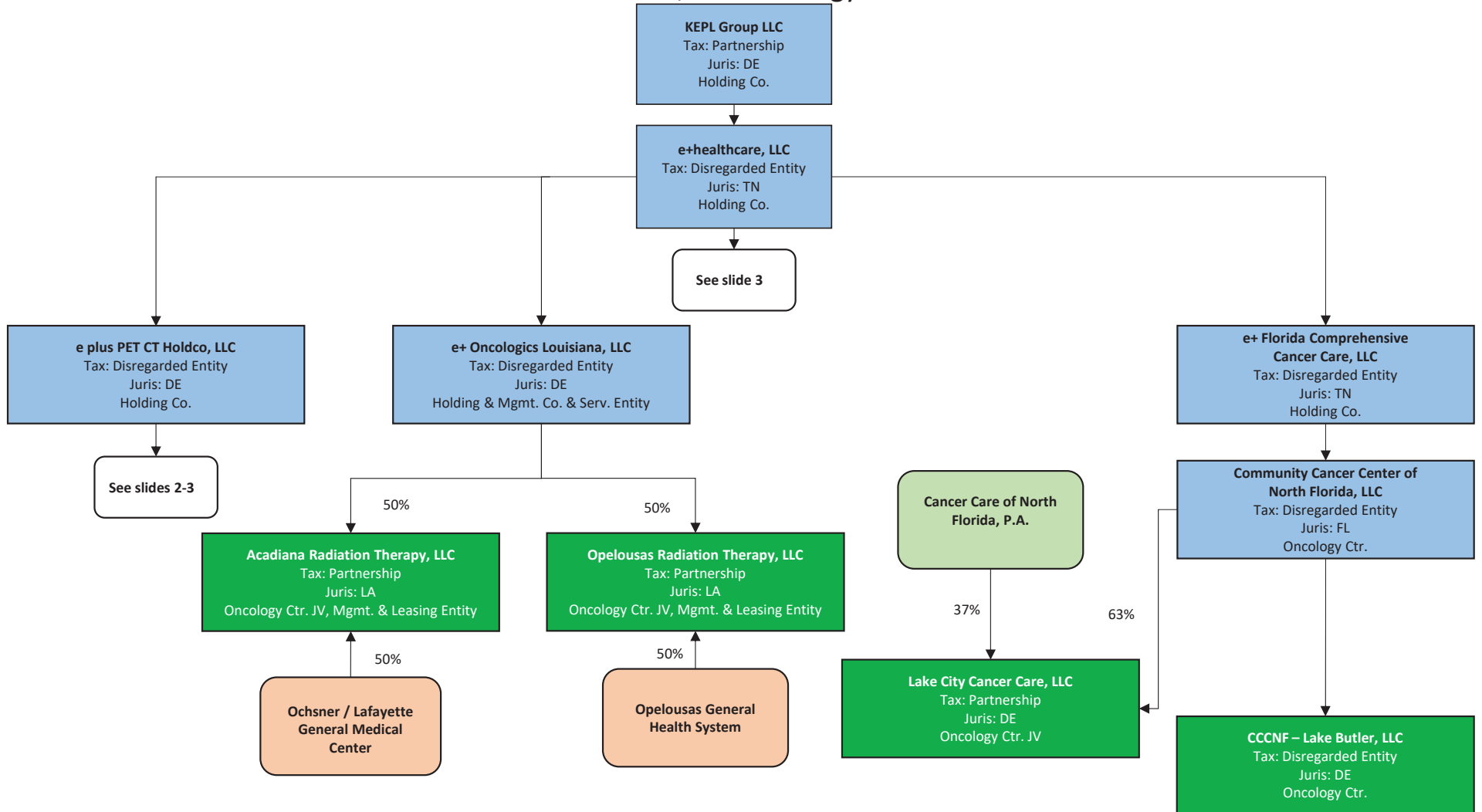
CONFIDENTIAL

4

CONFIDENTIAL

RGH_000757_a

e+ healthcare, LLC Oncology Centers



1/24/2025

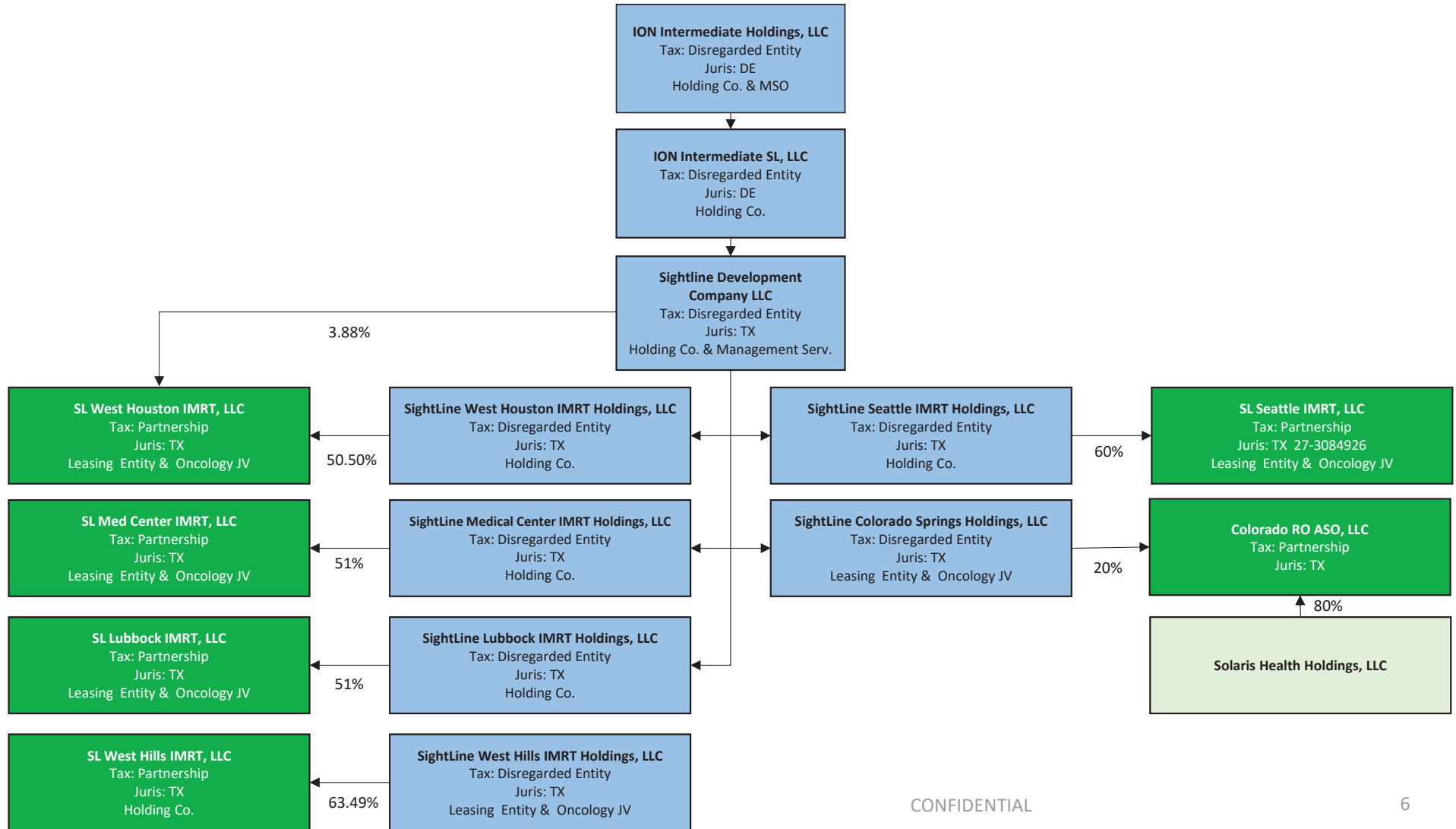
CONFIDENTIAL

5

CONFIDENTIAL

RGH_000758_a

ION Sightline Entities



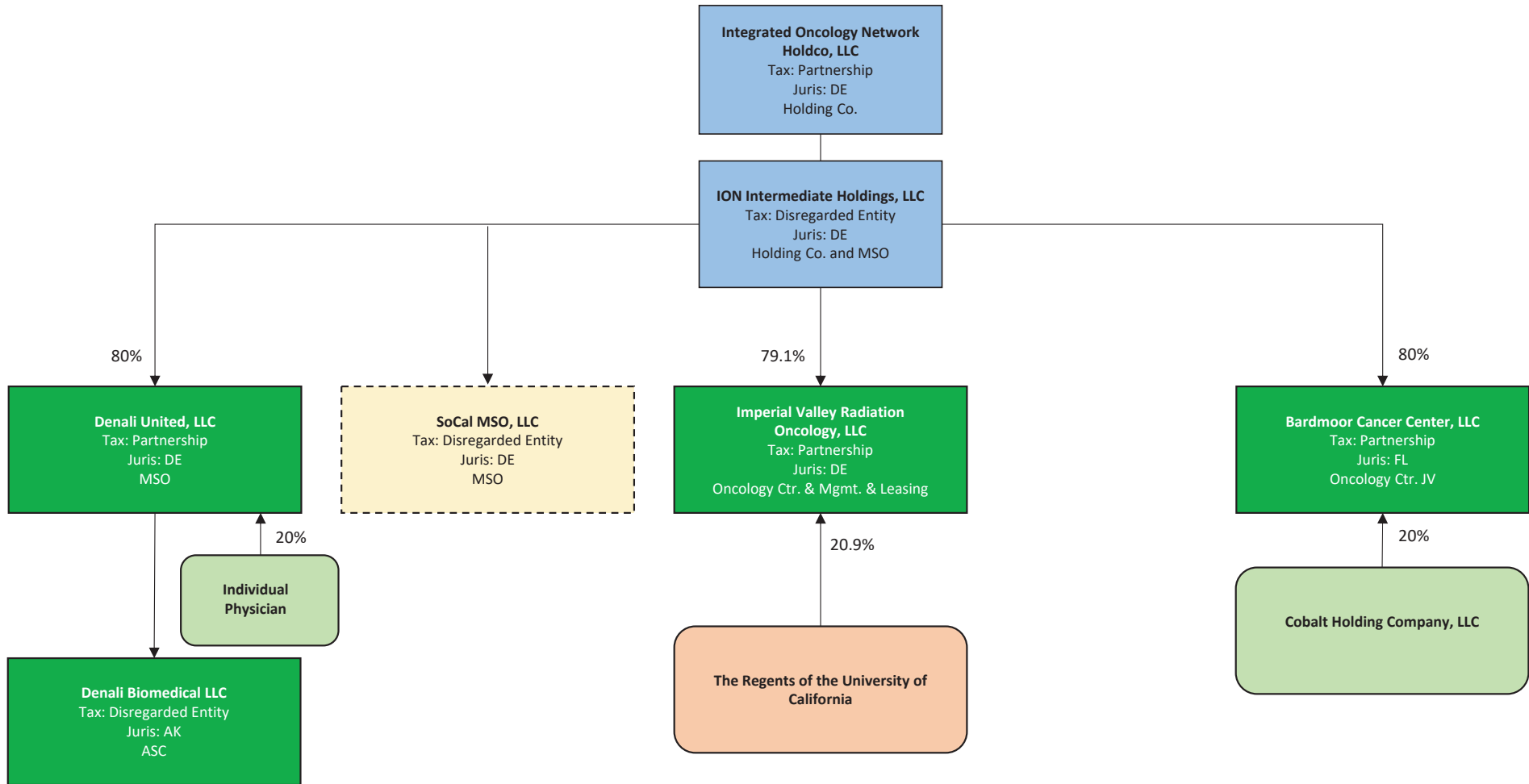
CONFIDENTIAL

6

CONFIDENTIAL

RGH_000759_a

ION Intermediate Holdings, LLC



1/24/2025

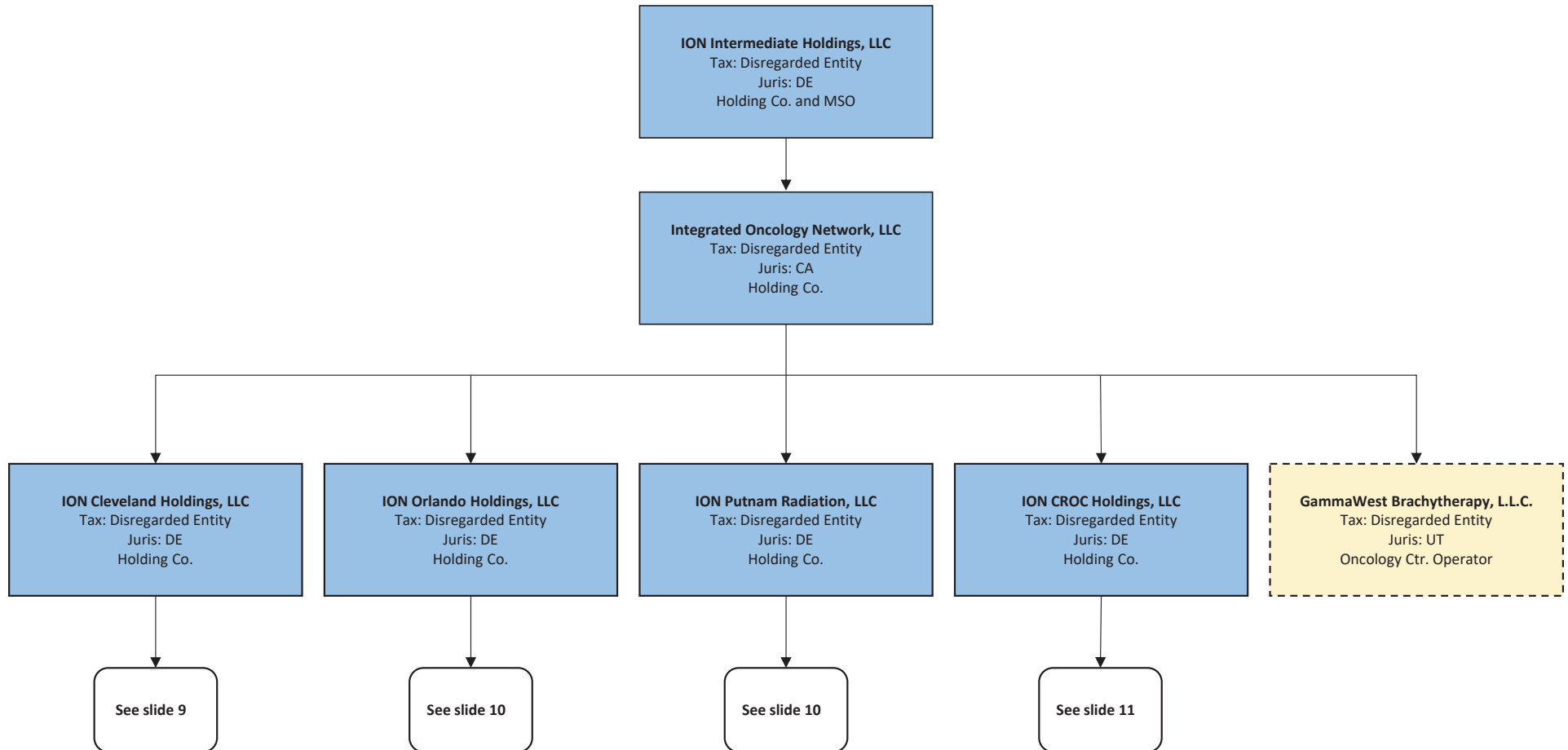
CONFIDENTIAL

7

CONFIDENTIAL

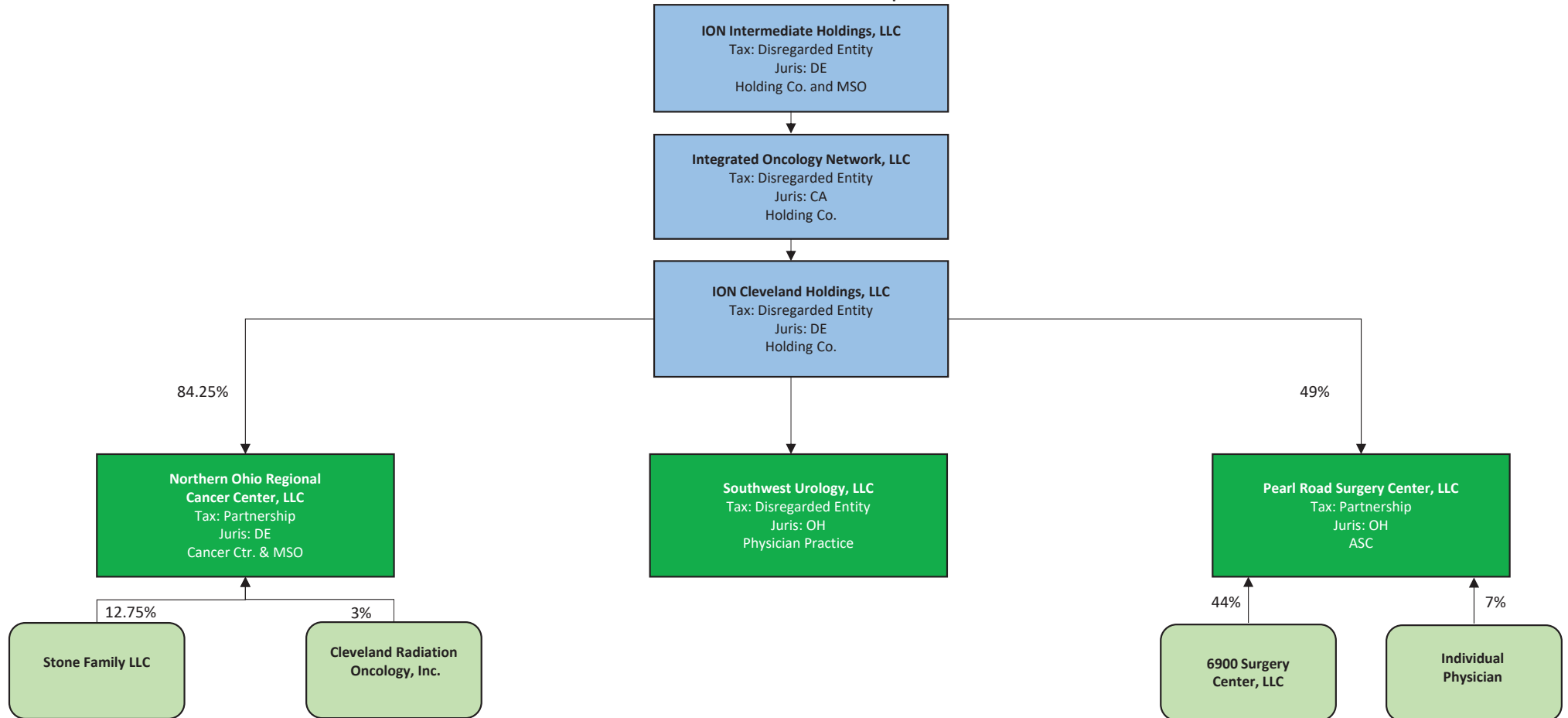
RGH_000760_a

Integrated Oncology Network, LLC



Integrated Oncology Network, LLC

– ION Cleveland Group –



1/24/2025

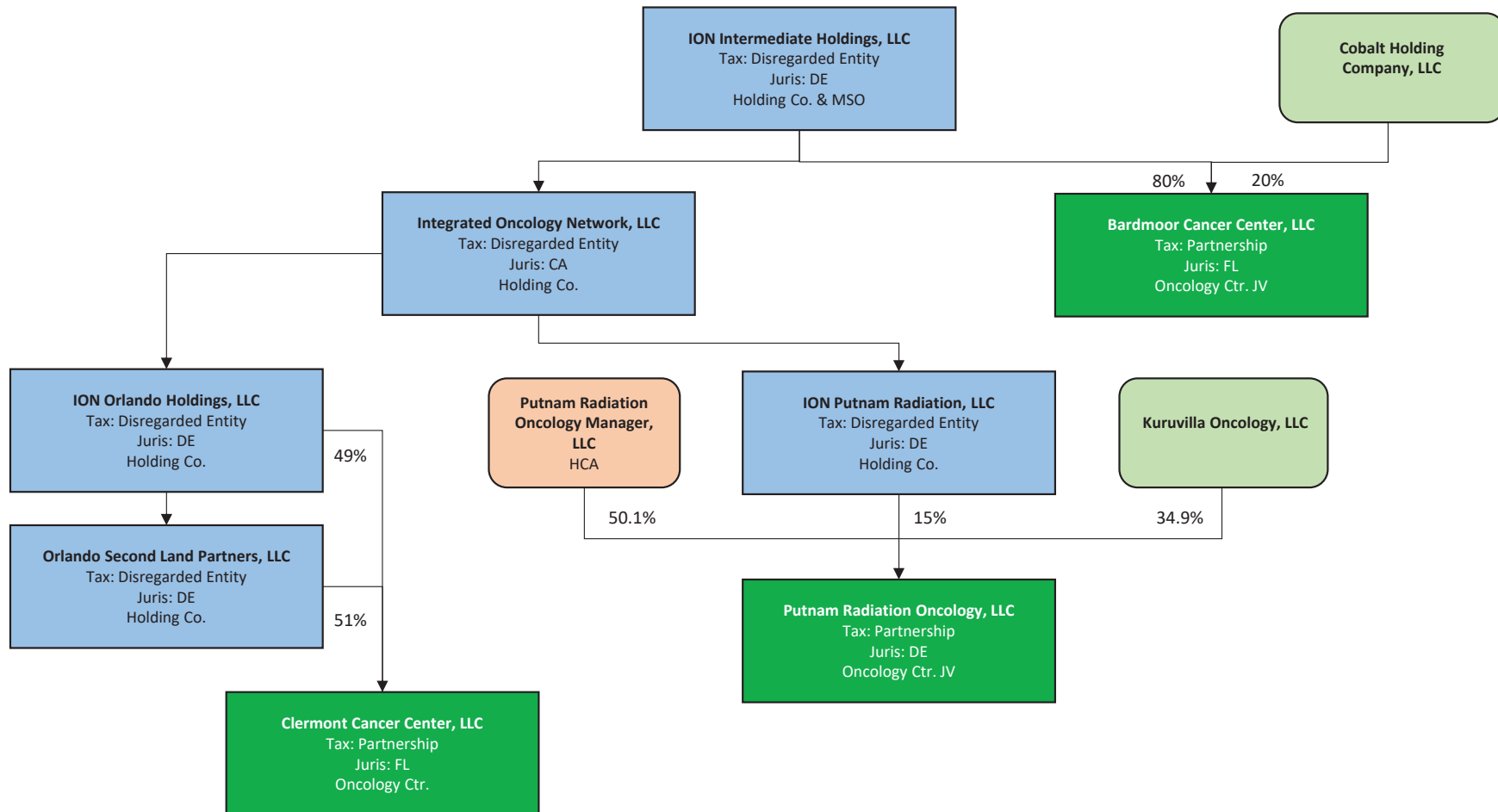
CONFIDENTIAL

9

CONFIDENTIAL

RGH_000762_a

Integrated Oncology Network, LLC
- Florida Entities -



1/24/2025

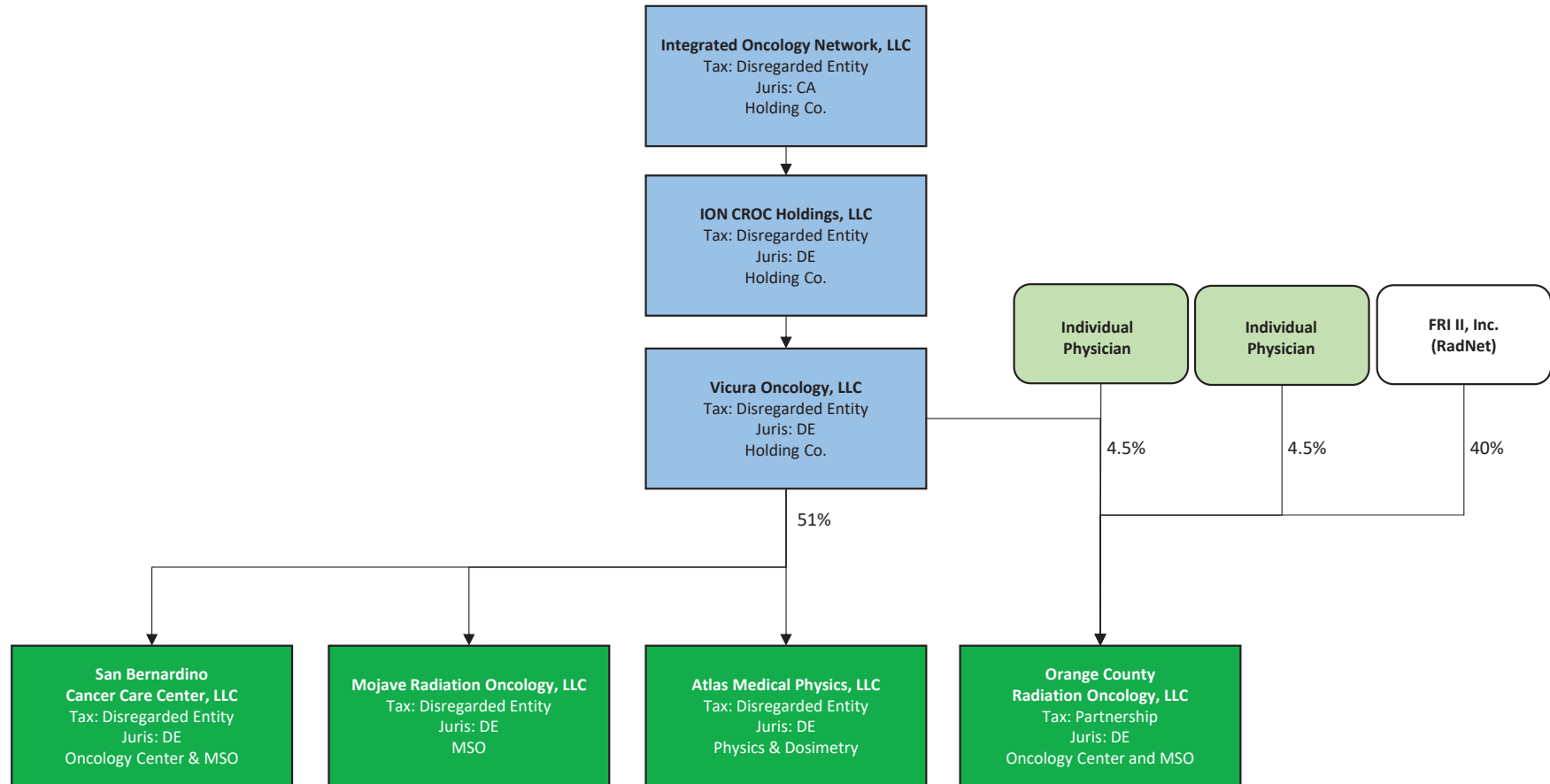
CONFIDENTIAL

10

CONFIDENTIAL

RGH_000763_a

Integrated Oncology Network, LLC
- ION CROC Holdings, LLC -



1/24/2025

CONFIDENTIAL

11

CONFIDENTIAL

RGH_000764_a

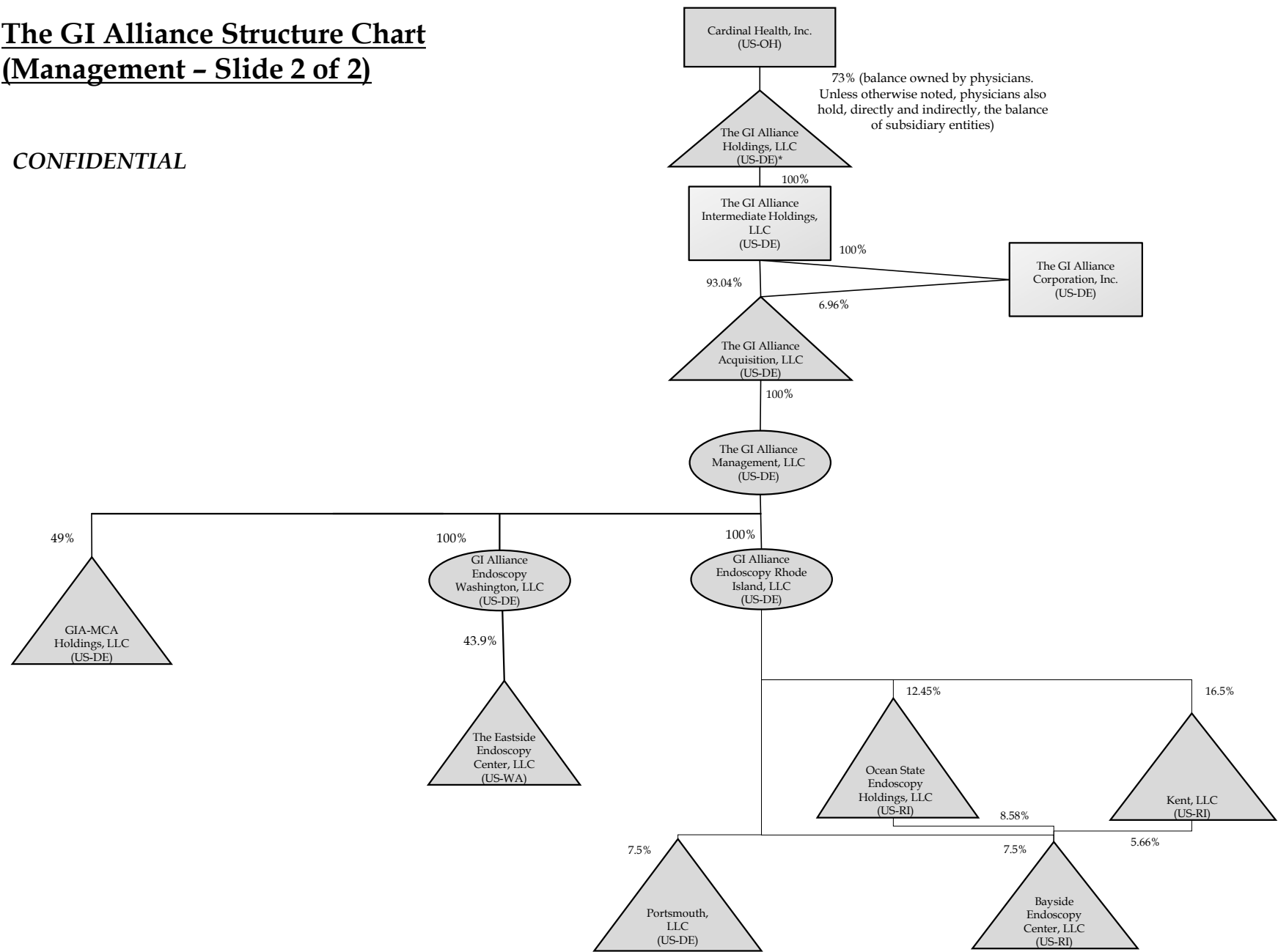
CONFIDENTIAL

CONFIDENTIAL




The GI Alliance Structure Chart
(Management – Slide 2 of 2)

CONFIDENTIAL





Entity Classification Legend

 S Corporation

 C Corporation

 Partnership

 Disregarded Entity or Natural Person

 501(c)(3) Tax Exempt

BUSINESS CONFIDENTIAL