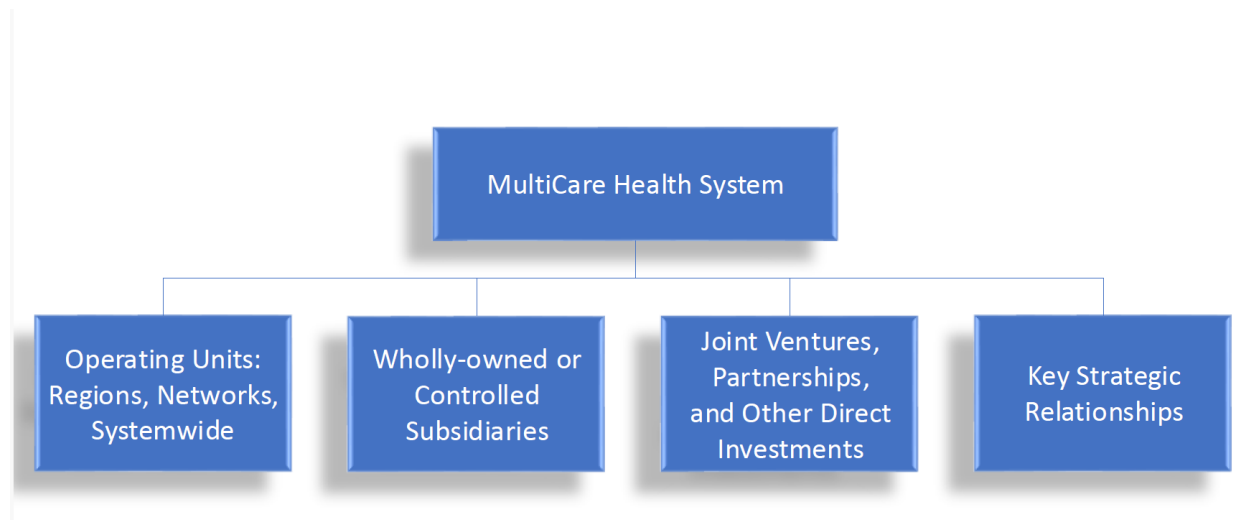


Pre-Closing Organizational Chart  
PUBLIC



Operating Units   Regions			
<b>Capital Pacific Region</b> <ul style="list-style-type: none"> <li>• Capital Medical Center / OCED</li> <li>• Capital Physicians</li> </ul>	<b>Inland Northwest Region</b> <ul style="list-style-type: none"> <li>• Deaconess Hospital / OCED</li> <li>• Valley Hospital</li> <li>• Rockwood Clinic</li> </ul>	<b>Mary Bridge</b> <ul style="list-style-type: none"> <li>• Mary Bridge Children's Hospital and Health Network</li> <li>• Mary Bridge Children's Pediatrics</li> <li>• Woodcreek Pediatrics by Mary Bridge</li> <li>• Treehouse</li> <li>• Pediatrics NW</li> </ul>	
<b>South Puget Sound</b> <ul style="list-style-type: none"> <li>• Auburn Medical Center</li> <li>• Covington Medical Center</li> <li>• Good Samaritan Hospital / OCEDs<sup>2</sup></li> <li>• Tacoma General &amp; Allenmore Hospitals / OCEDs</li> <li>• Gig Harbor Multi-Specialty Medical Center</li> <li>• MultiCare Medical Associates</li> <li>• Puyallup Ambulatory Surgery Center</li> <li>• VP Surgery Center of Auburn</li> <li>• Surgery Center of Silverdale<sup>1</sup></li> <li>• Neospine<sup>1</sup></li> </ul>	<b>North Sound Region</b> <ul style="list-style-type: none"> <li>• Overlake Medical Center / OCED</li> <li>• Overlake Clinics</li> <li>• Overlake Surgery Center<sup>1</sup></li> </ul>		
	<b>Yakima Valley</b> <ul style="list-style-type: none"> <li>• Yakima Memorial Hospital / OCED</li> <li>• Primary &amp; Specialty Care Clinics</li> <li>• MultiCare Orthopedics NW</li> <li>• MultiCare Endoscopy Center Yakima</li> <li>• MultiCare Surgery Center at Ridgeview</li> </ul>	<b>Behavioral Health</b> <ul style="list-style-type: none"> <li>• Good Samaritan Behavioral Health</li> <li>• Navos<sup>1</sup></li> <li>• Greater Lakes Mental Healthcare<sup>1</sup></li> <li>• Wellfound<sup>1</sup></li> </ul>	

Pre-Closing Organizational Chart  
PUBLIC

