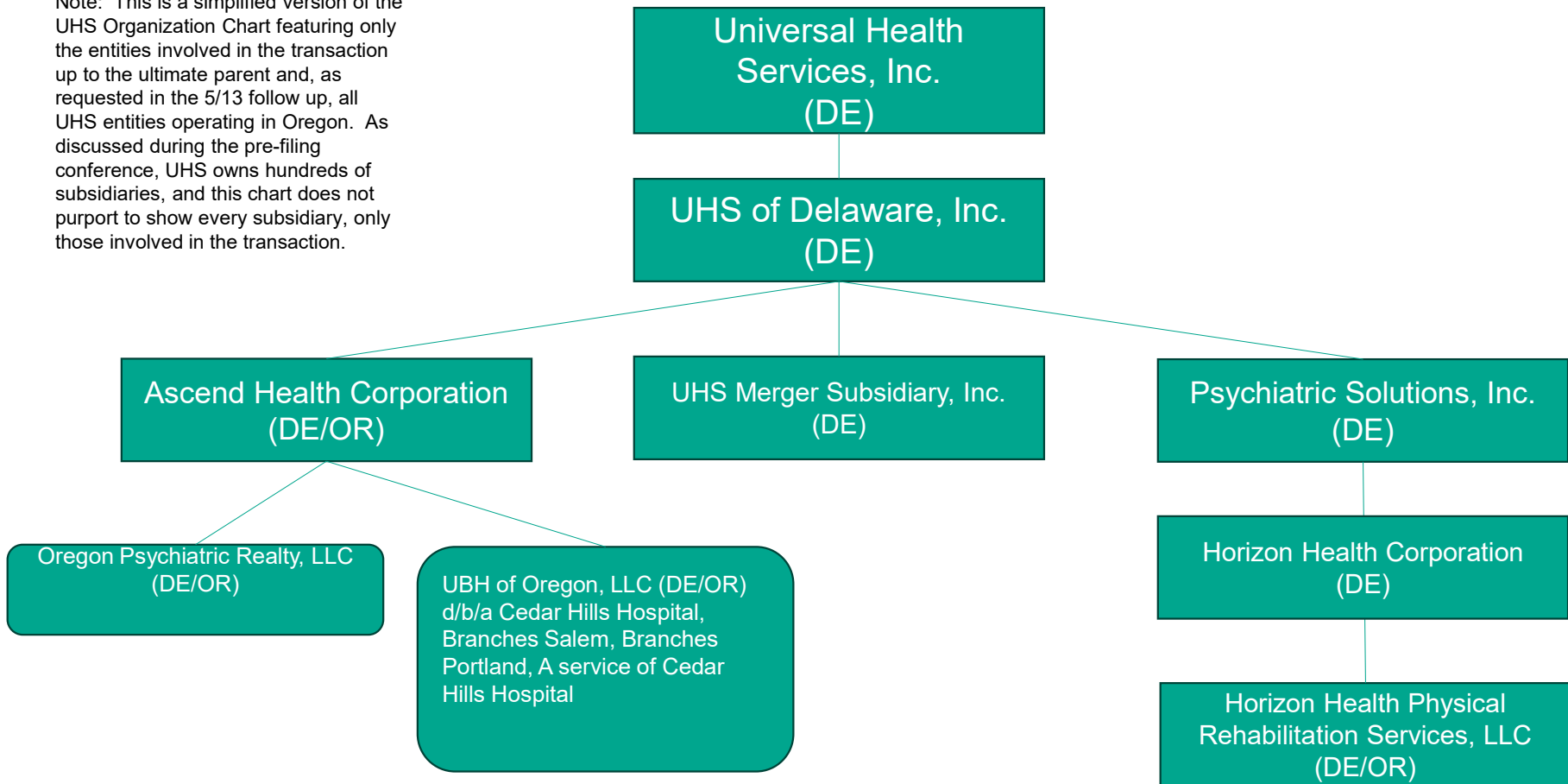


# UHS Pre-Closing Organizational Chart

Note: This is a simplified version of the UHS Organization Chart featuring only the entities involved in the transaction up to the ultimate parent and, as requested in the 5/13 follow up, all UHS entities operating in Oregon. As discussed during the pre-filing conference, UHS owns hundreds of subsidiaries, and this chart does not purport to show every subsidiary, only those involved in the transaction.



mwe.com