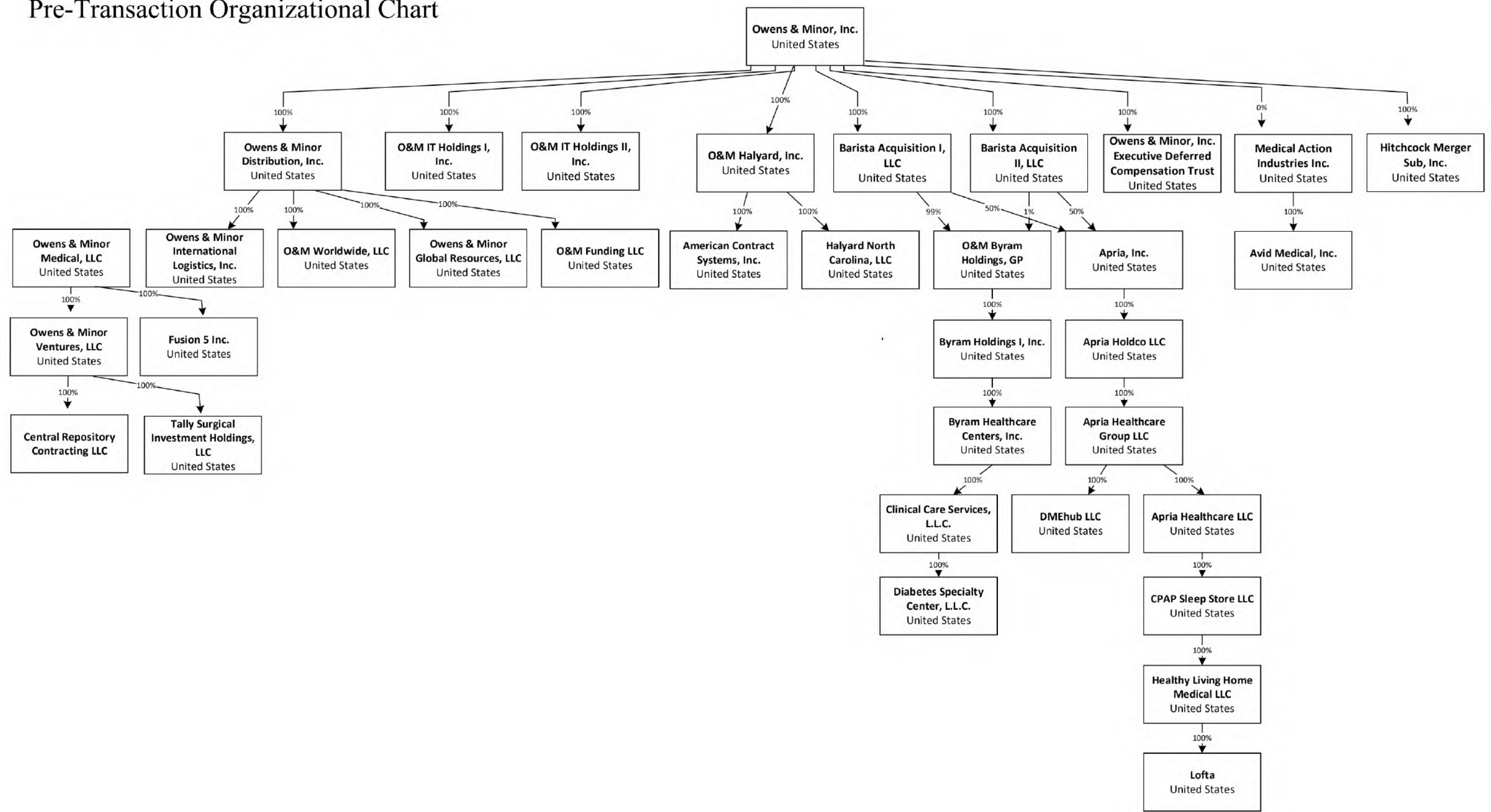


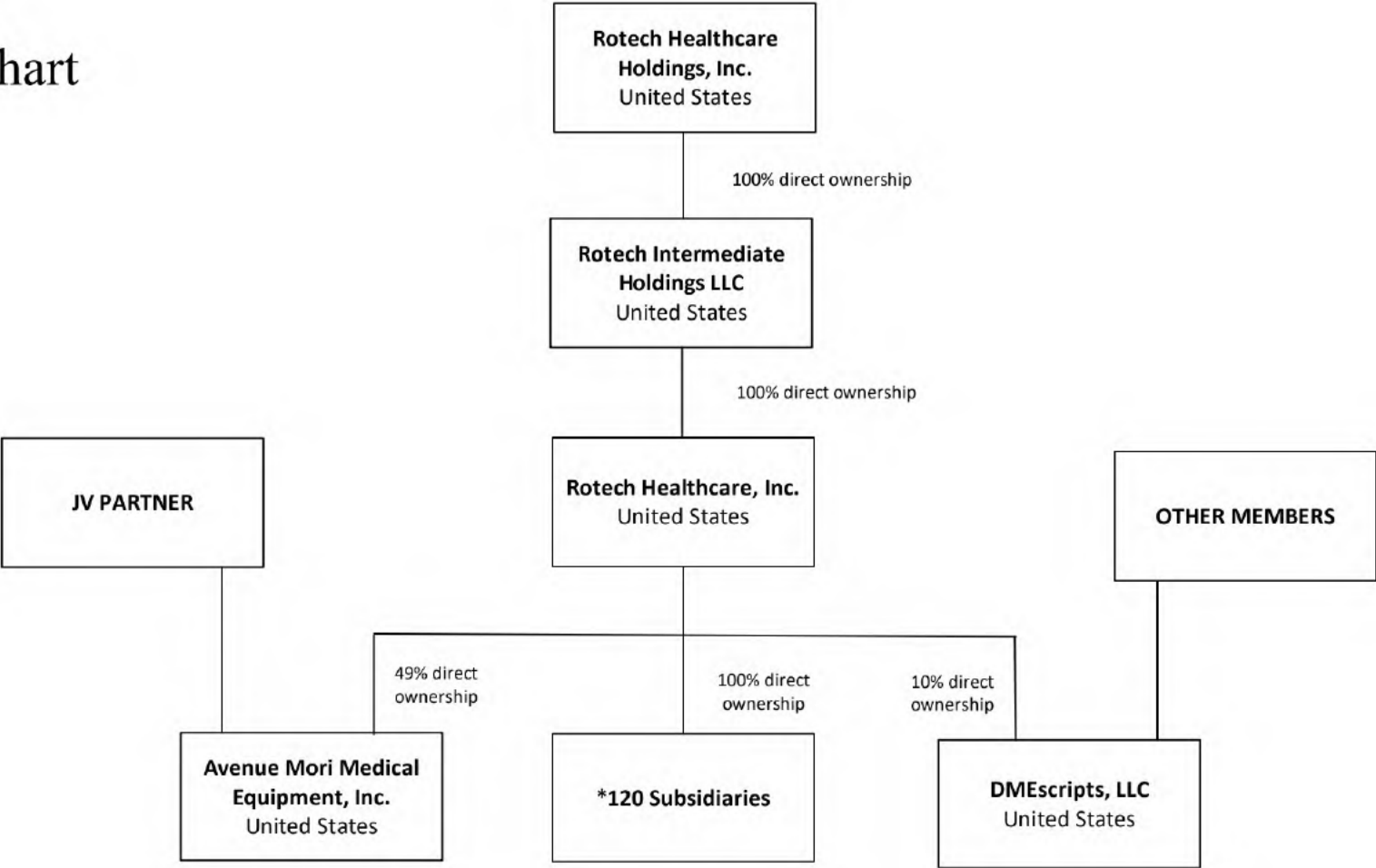
**PUBLIC**

**Pre- and Post-Transaction  
Organizational Structure Charts**

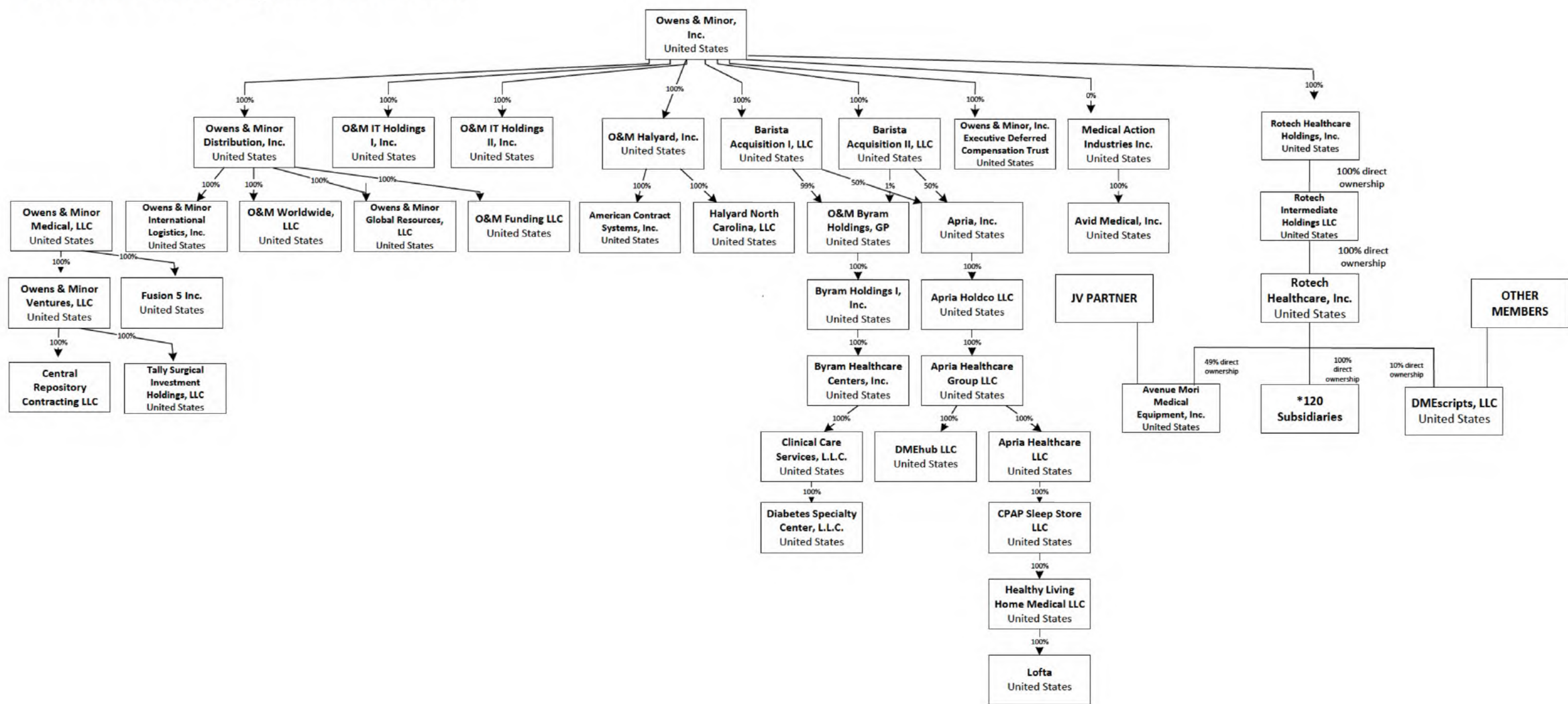
**EXHIBIT 10(c)**  
Owens & Minor, Inc.  
Pre-Transaction Organizational Chart



**EXHIBIT 10(c)**  
Rotech Healthcare Holdings, Inc.  
Pre-Transaction Organizational Chart



**EXHIBIT 10(c)**  
**Owens & Minor, Inc.**  
**Post-Transaction Organizational Chart**





### Exhibit 1 to Rotech Organizational Chart

<i>Name of Company Subsidiary</i>	<i>State of Formation / Incorporation</i>	<i>Company Group Owner</i>	<i>Percentage Ownership</i>
1. A-1 Medical Equipment, Inc.	Florida	Rotech Healthcare Inc.	100.00%
2. Acadia Home Care	Maine	Rotech Healthcare Inc.	100.00%
3. Allied Medical Supply, Inc.	Arizona	Rotech Healthcare Inc.	100.00%
4. Always Medical Equipment, Inc.	Florida	Rotech Healthcare Inc.	100.00%
5. American Home Medical Equipment and Services, Inc.	Pennsylvania	Rotech Healthcare Inc.	100.00%
6. Andy Boyd's InHome Medical, Inc., West	West Virginia	Rotech Healthcare Inc.	100.00%
7. Andy Boyd's InHome Medical/InHome Medical Inc.	West Virginia	Rotech Healthcare Inc.	100.00%
8. Anniston Health & Sickroom Supplies, Inc.	Alabama	Rotech Healthcare Inc.	100.00%
9. Berkeley Medical Equipment, Inc.	Florida	Rotech Healthcare Inc.	100.00%
10. Best Home Medical, Inc.	West Virginia	Rotech Healthcare Inc.	100.00%
11. Beta Medical Equipment, Inc.	Florida	Rotech Healthcare Inc.	100.00%
12. Better Living Now, Inc.	New York	Rotech Healthcare Inc.	100.00%
13. Bioresolutions, LLC	Nevada	Rotech Healthcare Inc.	100.00%
14. Cambria Medical Supply, Inc.	Florida	Rotech Healthcare Inc.	100.00%
15. Camden Medical Supply, Inc.	Florida	Rotech Healthcare Inc.	100.00%
16. Care Medical Supplies, Inc.	Illinois	Rotech Healthcare Inc.	100.00%
17. Centennial Medical Equipment, Inc.	Florida	Rotech Healthcare Inc.	100.00%
18. Community Home Oxygen, Inc.	Montana	Rotech Healthcare Inc.	100.00%
19. Contour Medical Supply, Inc.	Florida	Rotech Healthcare Inc.	100.00%
20. Corley Home Health Care, Inc.	Georgia	Rotech Healthcare Inc.	100.00%
21. CPO 2, Inc.	Pennsylvania	Rotech Healthcare Inc.	100.00%
22. Daniel Medical Systems, Inc.	Oklahoma	Rotech Healthcare Inc.	100.00%
23. Diabetic Solutions, Inc.	Florida	Rotech Healthcare Inc.	100.00%

<i>Name of Company Subsidiary</i>	<i>State of Formation / Incorporation</i>	<i>Company Group Owner</i>	<i>Percentage Ownership</i>
24. Distinct Home Health Care, Inc.	Florida	Rotech Healthcare Inc.	100.00%
25. Don Paul Respiratory Services, Inc.	Colorado	Rotech Healthcare Inc.	100.00%
26. DuMED, Inc.	Iowa	Rotech Healthcare Inc.	100.00%
27. East Tennessee Infusion & Respiratory, Inc.	Florida	Rotech Healthcare Inc.	100.00%
28. Ellis County Home Medical Equipment, LLC	Texas	Rotech Healthcare Inc.	100.00%
29. Encore Home Health Care, Inc.	Florida	Rotech Healthcare Inc.	100.00%
30. Excel Medical of Fort Dodge, Inc.	Iowa	Rotech Healthcare Inc.	100.00%
31. Excel Medical of Marshalltown, Inc.	Iowa	Rotech Healthcare Inc.	100.00%
32. Firstcare, Inc.	Kansas	Rotech Healthcare Inc.	100.00%
33. Fischer Medical Equipment, Inc.	Idaho	Rotech Healthcare Inc.	100.00%
34. Four Rivers Home Health Care, Inc.	Missouri	Rotech Healthcare Inc.	100.00%
35. G&G Medical, Inc.	Colorado	Rotech Healthcare Inc.	100.00%
36. Gate City Medical Equipment, Inc.	Florida	Rotech Healthcare Inc.	100.00%
37. Georgia Medical Resources, Inc.	Georgia	Rotech Healthcare Inc.	100.00%
38. Gladwin Area Home Care, Inc.	Michigan	Rotech Healthcare Inc.	100.00%
39. Griffin Home Health Care, Inc.	North Carolina	Rotech Healthcare Inc.	100.00%
40. Hamilton Medical Equipment Service, Inc.	Iowa	Rotech Healthcare Inc.	100.00%
41. Health Care Services, of Mississippi, Incorporated	Florida	Rotech Healthcare Inc.	100.00%
42. Holland Medical Services, Inc.	Florida	Rotech Healthcare Inc.	100.00%
43. Home Care Oxygen Service, Inc.	Minnesota	Rotech Healthcare Inc.	100.00%
44. Home Medical Systems, Inc.	South Carolina	Rotech Healthcare Inc.	100.00%
45. IHS Acquisition XXVII, Inc.	Delaware	Rotech Healthcare Inc.	100.00%
46. Integrated Health Services at Jefferson Hospital, Inc.	Delaware	Rotech Healthcare Inc.	100.00%
47. Intensive Home Care Services, Inc.	Texas	Rotech Healthcare Inc.	100.00%



<i>Name of Company Subsidiary</i>	<i>State of Formation / Incorporation</i>	<i>Company Group Owner</i>	<i>Percentage Ownership</i>
48. IOTA Medical Equipment, Inc.	Florida	Rotech Healthcare Inc.	100.00%
49. Lovejoy Medical, Inc.	Kentucky	Rotech Healthcare Inc.	100.00%
50. Major Medical Supply, Inc.	Texas	Rotech Healthcare Inc.	100.00%
51. MED, INC.	Pennsylvania	Rotech Healthcare Inc.	100.00%
52. Medco Professional Services, Corp.	Colorado	Rotech Healthcare Inc.	100.00%
53. MedCorp International, Inc.	Arizona	Rotech Healthcare Inc.	100.00%
54. Medic-Aire Medical Equipment, Inc.	Florida	Rotech Healthcare Inc.	100.00%
55. Medical Electro-Therapeutics, Inc.	Florida	Rotech Healthcare Inc.	100.00%
56. Medical Technology of Louisiana, LLC	Louisiana	Rotech Healthcare Inc.	100.00%
57. Medicare Rental Supply, Inc.	West Virginia	Rotech Healthcare Inc.	100.00%
58. Medoville, Inc.	Maryland	Rotech Healthcare Inc.	100.00%
59. Michigan Medical Supply, Inc.	Michigan	Rotech Healthcare Inc.	100.00%
60. NeighborCare Home Medical Equipment, LLC	Pennsylvania	Rotech Healthcare Inc.	100.00%
61. MMS Norfolk, Inc. 62. dba Medical Equipment Distributors of Virginia	Virginia	Rotech Healthcare Inc.	100.00%
63. My DME DOC LLC	Florida	Rotech Healthcare Inc.	100.00%
64. NeighborCare Home Medical Equipment of Maryland, LLC	Maryland	Rotech Healthcare Inc.	100.00%
65. NeighborCare Home Medical Equipment, LLC	Pennsylvania	Rotech Healthcare Inc.	100.00%
66. Nettie D., LLC dba BP Gamma Medical	Delaware	Rotech Healthcare Inc.	100.00%
67. Neumann's Home Medical Equipment, Inc.	Illinois	Rotech Healthcare Inc.	100.00%
68. Nightingale Home Health Care, Inc.	Florida	Rotech Healthcare Inc.	100.00%
69. North Central Washington Respiratory Care Services, Inc.	Washington	Rotech Healthcare Inc.	100.00%
70. Northeast Medical Equipment, Inc.	Florida	Rotech Healthcare Inc.	100.00%
71. Northwest Home Medical, Inc.	Idaho	Rotech Healthcare Inc.	100.00%

<i>Name of Company Subsidiary</i>	<i>State of Formation / Incorporation</i>	<i>Company Group Owner</i>	<i>Percentage Ownership</i>
72. Oxygen of Oklahoma, Inc.	Oklahoma	Rotech Healthcare Inc.	100.00%
73. Oxygen Plus Medical Equipment, Inc.	Florida	Rotech Healthcare Inc.	100.00%
74. Oxygen Plus, Inc.	Colorado	Rotech Healthcare Inc.	100.00%
75. Oxygen Therapy Associates, Inc.	Texas	Rotech Healthcare Inc.	100.00%
76. Oxytech of North Carolina, LLC 77. dba Coastal Carolina Respircare	North Carolina	Rotech Healthcare Inc.	100.00%
78. Peterson's Home Care, Inc.	California	Rotech Healthcare Inc.	100.00%
79. PHI Medical Equipment, Inc.	Florida	Rotech Healthcare Inc.	100.00%
80. Physicians Choice Respiratory Services, Inc.	Florida	Rotech Healthcare Inc.	100.00%
81. Pioneer Medical Services, Inc.	West Virginia	Rotech Healthcare Inc.	100.00%
82. Preferential Home Health Care, Inc.	Florida	Rotech Healthcare Inc.	100.00%
83. Principal Medical Equipment, Inc.	Florida	Rotech Healthcare Inc.	100.00%
84. Professional Breathing Associates, Inc.	Michigan	Rotech Healthcare Inc.	100.00%
85. Professional Respiratory Home Healthcare, Inc.	Florida	Rotech Healthcare Inc.	100.00%
86. PSI Health Care, Inc.	South Dakota	Rotech Healthcare Inc.	100.00%
87. Quality Home Health Care, Inc.	Florida	Rotech Healthcare Inc.	100.00%
88. R.C.P.S., Inc.	California	Rotech Healthcare Inc.	100.00%
89. Regency Medical Equipment, Inc.	Florida	Rotech Healthcare Inc.	100.00%
90. Resp-A-Care, Inc.	Kentucky	Rotech Healthcare Inc.	100.00%
91. Respiracare Medical Equipment, Inc.	Florida	Rotech Healthcare Inc.	100.00%
92. Respiratory Medical Equipment of GA., Inc.	Florida	Rotech Healthcare Inc.	100.00%
93. Respitech Home Health Care, Inc.	Wyoming	Rotech Healthcare Inc.	100.00%
94. Responsive Home Health Care, Inc.	Florida	Rotech Healthcare Inc.	100.00%
95. RHEMA, Inc.	Texas	Rotech Healthcare Inc.	100.00%
96. Ritt Medical Group, Inc.	Arizona	Rotech Healthcare Inc.	100.00%



<i>Name of Company Subsidiary</i>	<i>State of Formation / Incorporation</i>	<i>Company Group Owner</i>	<i>Percentage Ownership</i>
97. RN Home Care Medical Equipment Company, Inc.	Florida	Rotech Healthcare Inc.	100.00%
98. Roswell Home Medical, Inc.	Florida	Rotech Healthcare Inc.	100.00%
99. Rotech Employee Benefits Corporation	Florida	Rotech Healthcare Inc.	100.00%
100. Rotech Home Medical Care, Inc.	Florida	Rotech Healthcare Inc.	100.00%
101. RoTech Oxygen and Medical Equipment, Inc.	Florida	Rotech Healthcare Inc.	100.00%
102. Roth Medical, Inc.	Colorado	Rotech Healthcare Inc.	100.00%
103. Rother's Hospital Equipment, Inc.	Kentucky	Rotech Healthcare Inc.	100.00%
104. Sampson Convalescent Medical Supply, Inc.	North Carolina	Rotech Healthcare Inc.	100.00%
105. Select Home Health Care, Inc.	Florida	Rotech Healthcare Inc.	100.00%
106. SHOPRotech, Inc.	Florida	Rotech Healthcare Inc.	100.00%
107. Sigma Medical Equipment, Inc.	Florida	Rotech Healthcare Inc.	100.00%
108. Southeastern Home Health, Inc.	Florida	Rotech Healthcare Inc.	100.00%
109. Sun Medical Supply, Inc.	North Carolina	Rotech Healthcare Inc.	100.00%
110. Sunshine Home Health Care, Inc.	Florida	Rotech Healthcare Inc.	100.00%
111. The Kilroy Company	North Carolina	Rotech Healthcare Inc.	100.00%
112. Theta Home Health Care, Inc.	Florida	Rotech Healthcare Inc.	100.00%
113. Tupelo Home Health, Inc.	Florida	Rotech Healthcare Inc.	100.00%
114. Valentine's Home Care, Inc.	Georgia	Rotech Healthcare Inc.	100.00%
115. Valley Medical Equipment, Inc.	Utah	Rotech Healthcare Inc.	100.00%
116. Valley Medical Equipment, Inc.	West Virginia	Rotech Healthcare Inc.	100.00%
117. Value Care, Inc.	Florida	Rotech Healthcare Inc.	100.00%
118. VitalCare Health Services, Inc.	Florida	Rotech Healthcare Inc.	100.00%
119. White's Medical Rentals, Inc.	South Carolina	Rotech Healthcare Inc.	100.00%
120. Zeta Home Health Care, Inc.	Florida	Rotech Healthcare Inc.	100.00%